



Weekly Performance Measures Report Palm Beach County



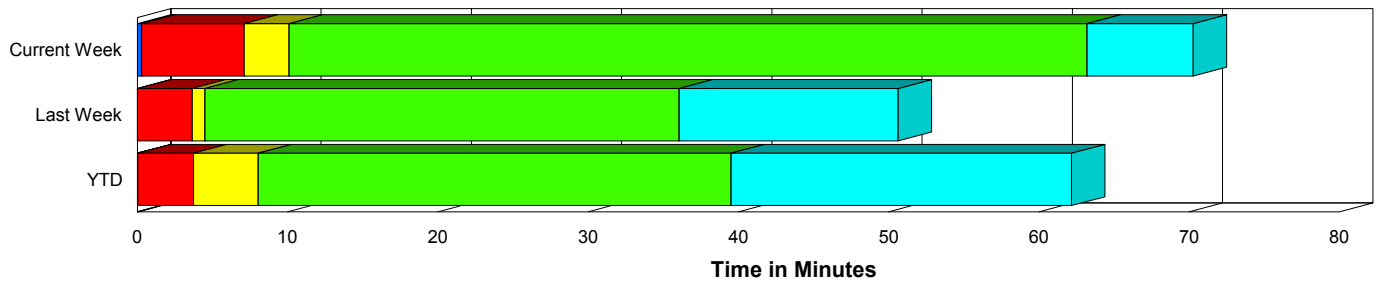
Period From Oct 25, 2009 to Oct 31, 2009

Created on:
November 02, 2009
10:54 am

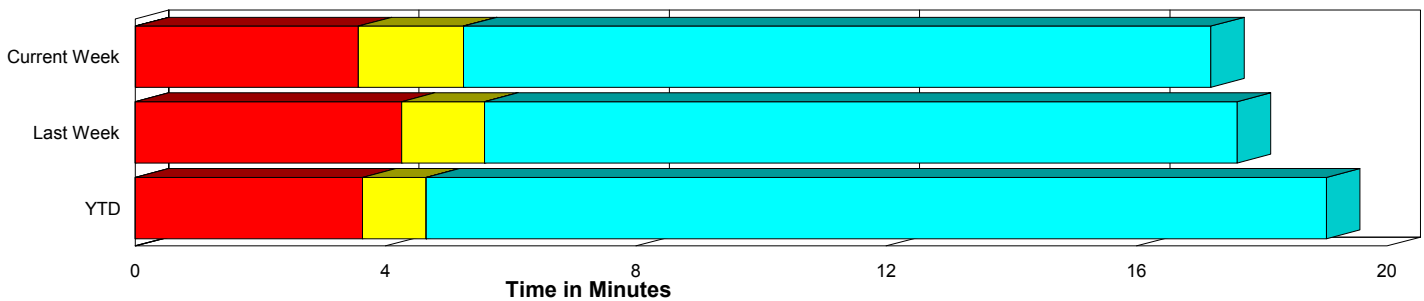
Performance Measures Summary

	Traffic Events (No Lanes Blocked)			Incidents (Lanes Blocked)		
	<u>This Week</u>	<u>Last Week</u>	<u>YTD</u>	<u>This Week</u>	<u>Last Week</u>	<u>YTD</u>
Number of Events	496	457	13,992	30	27	926
TMC Detection (min.)	0.01	0.00	0.00	0.29	0.00	0.04
TMC Verification (min.)	3.56	4.26	3.63	6.82	3.65	3.71
TMC Response (min.)	5.44	5.75	5.21	11.45	4.79	8.73
RR Dispatch Time (min.)	1.28	1.50	1.66	2.99	0.69	3.72
RR Response Time (min.)	4.18	4.30	3.64	8.43	4.10	4.98
Roadway Clearance (min.)				58.80	34.06	48.16
Event Clearance (min.)	17.39	17.77	19.60	54.53	47.53	70.10
# of Events w/ RR/SIRV	488	449	12,277	28	25	741
RR/SIRV Responses	488	449	12,277	28	25	741
RR/SIRV Activities	515	487	13,344	33	41	1,068

Incident Clearance Time-Line



Traffic Event (Non-Lane Blockage) Time-Line



■ Avg. TMC Detection Time	■ Avg. Time from TMC Response to Roadway Clearance*
■ Avg. Time from TMC Detection to TMC Verification	■ Avg. Time from Roadway Clearance to Incident/Event Clearance**
■ Avg. Time from TMC Verification to TMC Response	

* Roadway clearance equals all travel lanes open

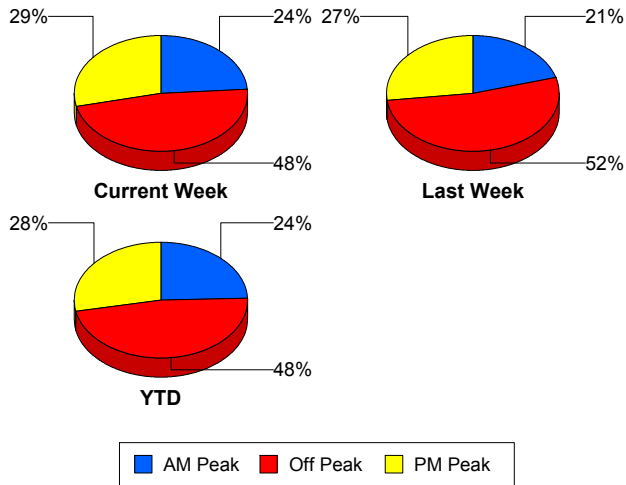
** Incident clearance equals time when last responder has left the scene

Performance Measures by Peak Period

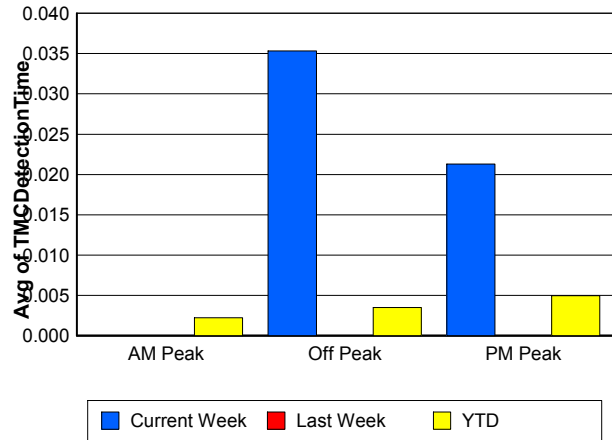
Note: AM peak period is defined as 6am to 10am and PM peak period is defined as 3pm to 7pm.

	AM Peak			Off Peak			PM Peak		
	Current Week	Last Week	YTD	Current Week	Last Week	YTD	Current Week	Last Week	YTD
Number of Events	125	100	3,631	250	253	7,098	151	131	4,189
Number of Incidents	5	6	266	20	17	431	5	4	229
TMC Detection (min.)	0.00	0.00	0.00	0.04	0.00	0.00	0.02	0.00	0.00
TMC Verification (min.)	2.26	2.29	3.13	4.31	4.37	3.38	4.05	5.43	4.52
TMC Response (min.)	5.30	4.65	4.56	6.55	5.66	6.03	4.76	6.55	5.29
RR Dispatch Time (min.)	1.05	1.39	1.25	1.94	1.17	2.37	0.70	2.08	1.42
RR Response Time (min.)	4.30	3.30	3.36	4.63	4.58	3.82	4.07	4.46	3.88
Event Clearance (min.)	21.13	16.62	22.16	20.75	19.11	24.09	16.09	22.21	20.93
Roadway Clearance (min.)	33.32	40.55	39.46	68.36	33.64	49.83	46.02	26.09	55.13
Incident Clearance (min.)	41.55	54.97	67.01	58.25	46.97	69.61	52.60	38.79	74.64
# of Events w/ RR/SIRV	121	98	3,478	247	250	5,578	148	126	3,962
RR/SIRV Responses	121	98	3,478	247	250	5,578	148	126	3,962
RR/SIRV Activities	133	104	3,923	259	278	6,162	156	146	4,327

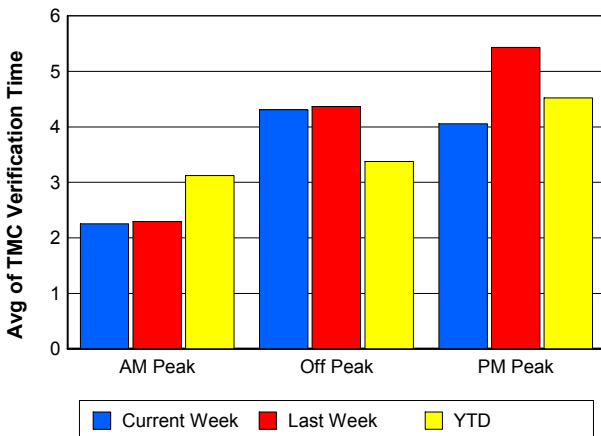
Number of Events / Peak Period



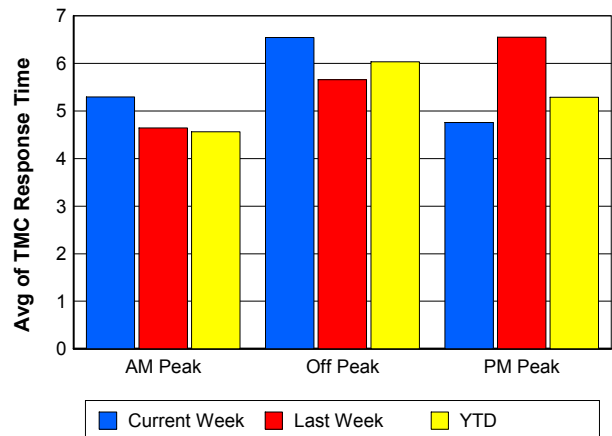
TMC Detection Time



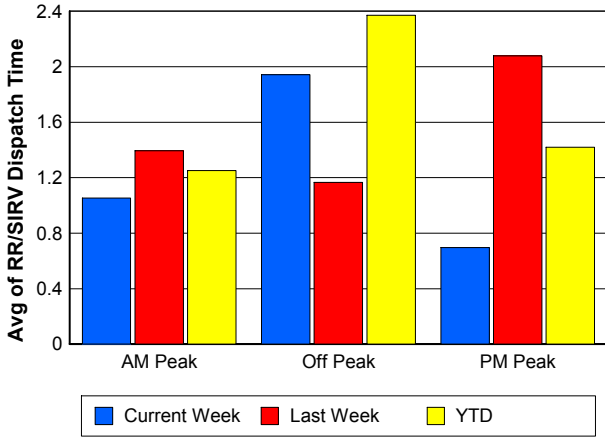
TMC Verification Time



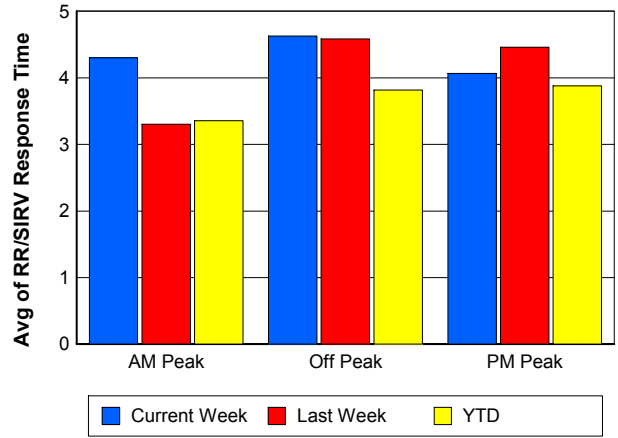
TMC Response Time



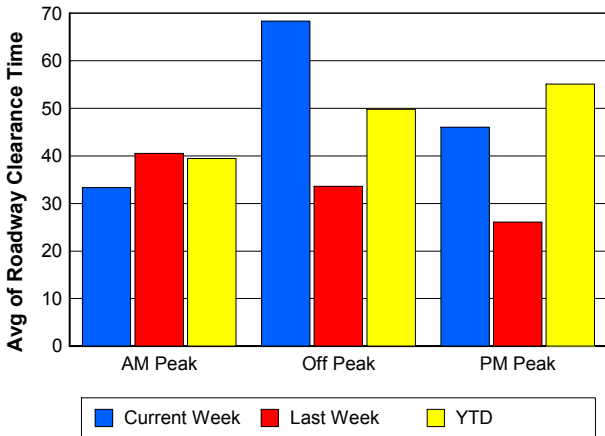
Road Ranger / SIRV Dispatch Time



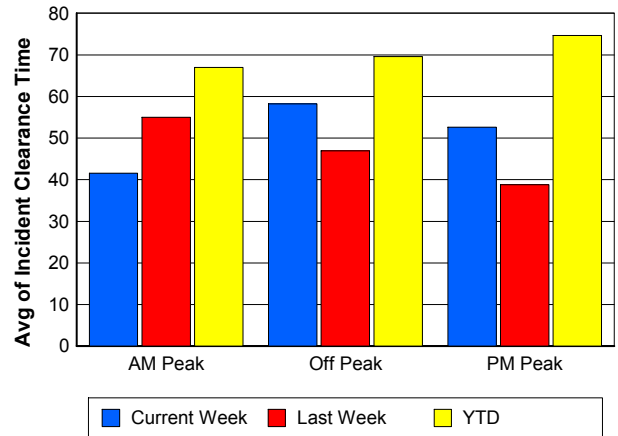
Road Ranger / SIRV Response Time



Roadway Clearance Time (2A)



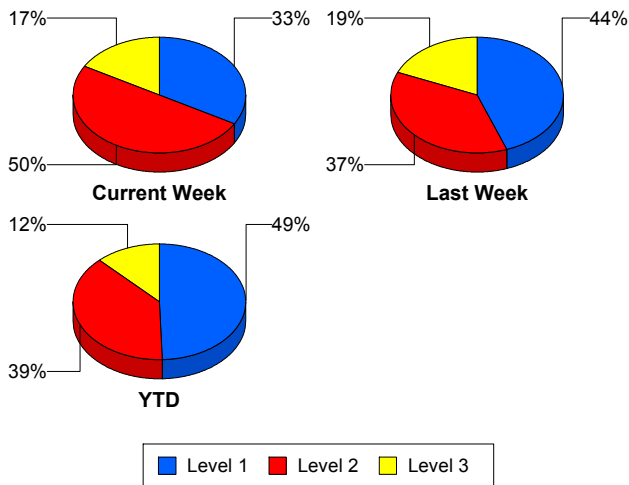
Incident Clearance Time (3B)



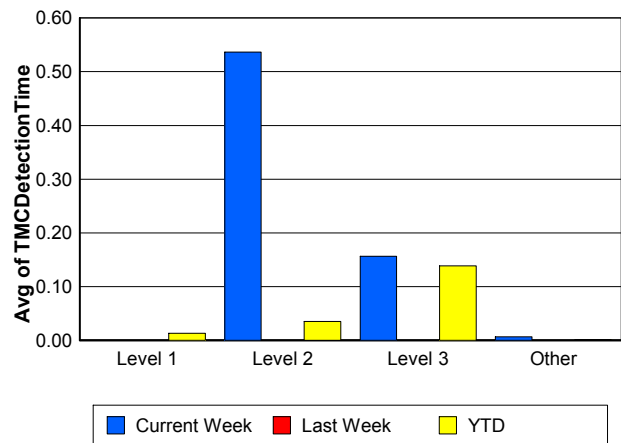
Performance Measures by Severity

	Level 1			Level 2			Level 3			Other		
	<u>This Week</u>	<u>Last Week</u>	<u>YTD</u>	<u>This Week</u>	<u>Last Week</u>	<u>YTD</u>	<u>This Week</u>	<u>Last Week</u>	<u>YTD</u>	<u>This Week</u>	<u>Last Week</u>	<u>YTD</u>
Number of Events	10	12	457	15	10	357	5	5	112	496	457	13,992
Number of Incidents	10	12	457	15	10	357	5	5	112	0	0	0
TMC Detection (min.)	0.00	0.00	0.01	0.54	0.00	0.04	0.16	0.00	0.14	0.01	0.00	0.00
TMC Verification (min.)	4.58	1.83	2.23	9.61	6.66	5.37	2.94	1.99	4.47	3.56	4.26	3.63
TMC Response (min.)	6.14	2.41	4.27	13.82	6.65	9.66	14.76	6.66	28.05	5.44	5.75	5.21
RR Dispatch Time (min.)	0.95	0.67	1.14	1.77	0.63	2.74	10.08	0.90	20.72	1.28	1.50	1.66
RR Resp. Time (min.)	5.31	1.74	3.15	12.40	6.02	6.91	4.68	5.76	7.33	4.18	4.30	3.64
Event Clearance (min.)	28.03	35.83	41.58	60.79	61.35	71.08	88.71	47.99	183.39	17.39	17.77	19.60
Roadway Clear. (min.)	17.13	18.03	14.69	54.87	47.24	53.29	153.92	46.15	168.41			
Incident Clearance (min.)	28.03	35.83	41.58	60.79	61.35	71.08	88.71	47.99	183.39			
# of Events w/ RR/SIRV	9	11	389	14	10	277	5	4	75	488	449	12,277
RR/SIRV Responses	9	11	389	14	10	277	5	4	75	488	449	12,277
RR/SIRV Activities	12	18	499	16	17	445	5	6	124	515	487	13,344

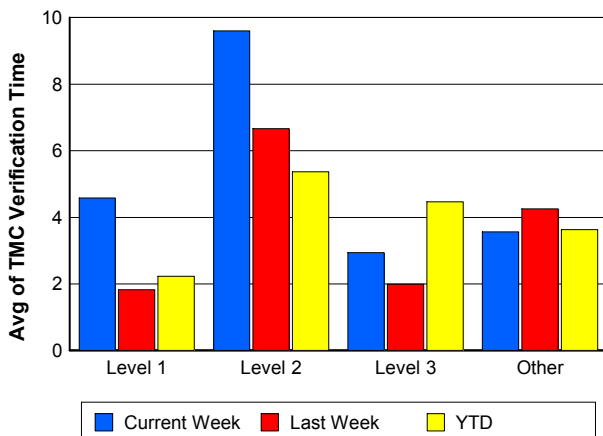
Number of Events / Severity



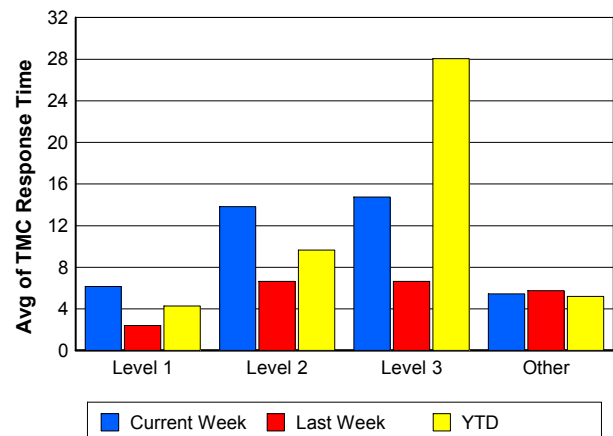
TMC Detection Time



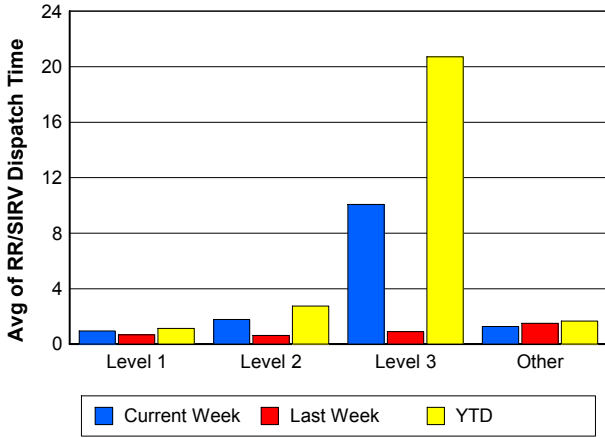
TMC Verification Time



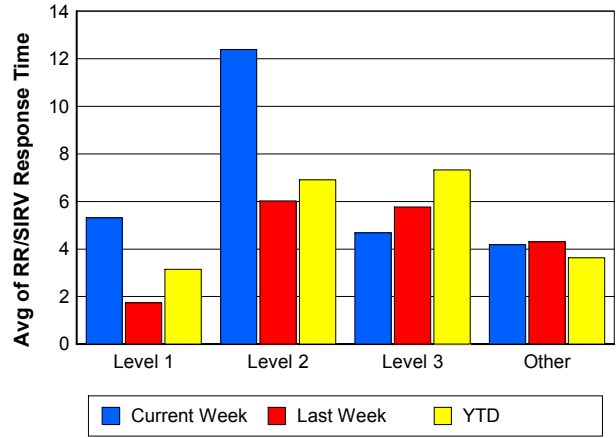
TMC Response Time



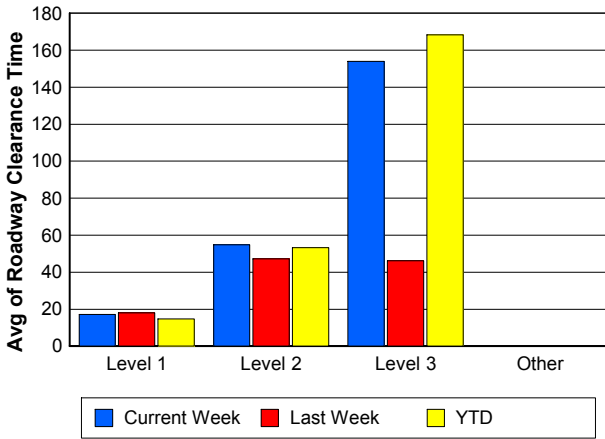
Road Ranger / SIRV Dispatch Time



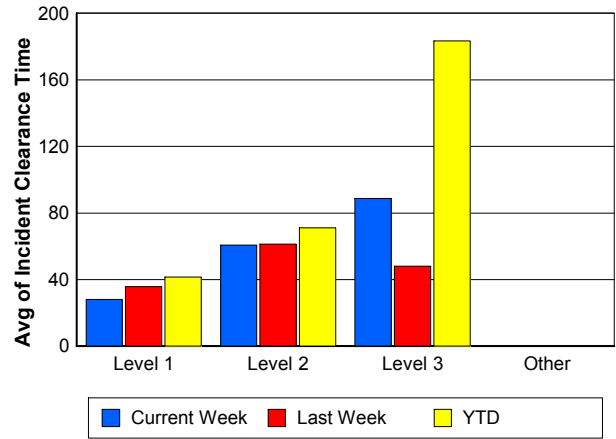
Road Ranger / SIRV Response Time



Roadway Clearance Time (2A)



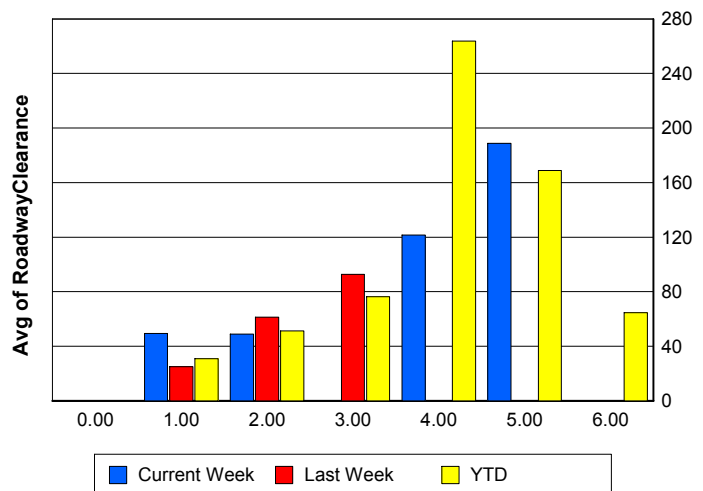
Incident Clearance Time (3B)



Roadway Clearance by Maximum Number of Lanes Blocked

	Current Week	Last Week	YTD
0			
1	49.45	24.99	30.86
2	48.83	61.42	51.26
3	0.00	92.80	76.40
4	121.52	0.00	263.87
5	188.78	0.00	168.97
6	0.00	0.00	64.70

Roadway Clearance Time (2A)



Performance Measures by Roadway

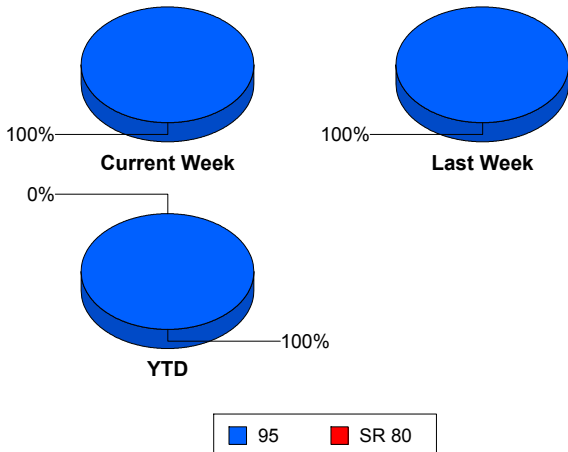
95

	<u>Current Week</u>	<u>Last Week</u>	<u>YTD</u>
Number of Events	526	484	14,914
Number of Incidents	30	27	923
TMC Detection (min.)	0.02	0.00	0.00
TMC Verification (min.)	3.75	4.22	3.64
TMC Response (min.)	5.73	5.70	5.41
RR Dispatch Time (min.)	1.38	1.46	1.78
RR Resp. Time (min.)	4.39	4.29	3.71
Event Clearance (min.)	19.50	19.43	22.36
Roadway Clear. (min.)	58.80	34.06	42.50
Incident Clearance (min.)	54.53	47.53	64.33
# of Events w/ RR/SIRV	516	474	13,018
RR/SIRV Responses	516	474	13,018
RR/SIRV Activities	548	528	14,412

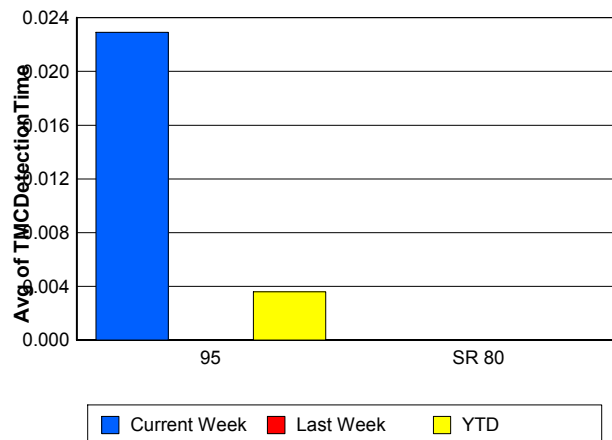
SR 80

	<u>YTD</u>
Number of Events	4
Number of Incidents	3
TMC Detection (min.)	0.00
TMC Verification (min.)	0.00
TMC Response (min.)	
RR Dispatch Time (min.)	
RR Resp. Time (min.)	
Event Clearance (min.)	1,409.98
Roadway Clear. (min.)	1,789.50
Incident Clearance (min.)	1,847.09
# of Events w/ RR/SIRV	0
RR/SIRV Responses	0
RR/SIRV Activities	0

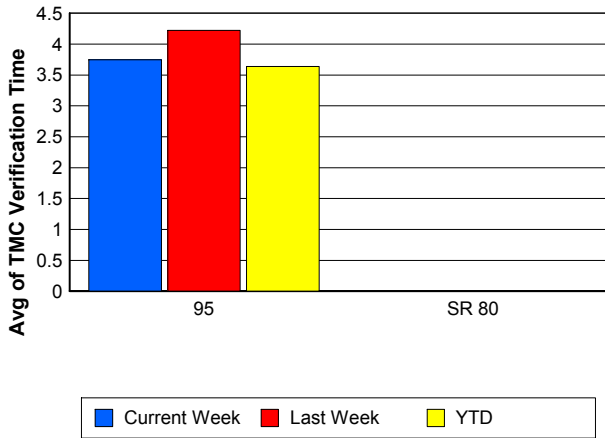
Number of Events / Roadway



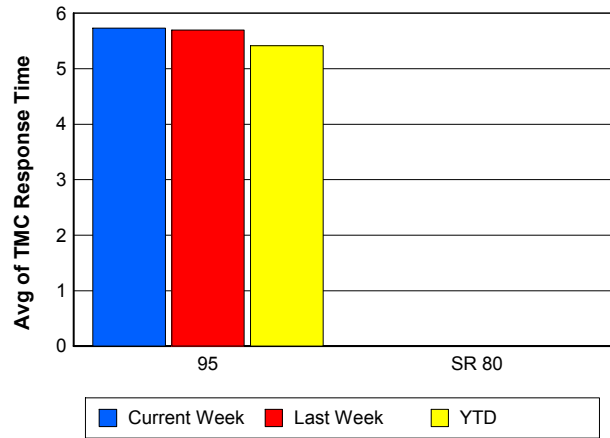
TMC Detection Time



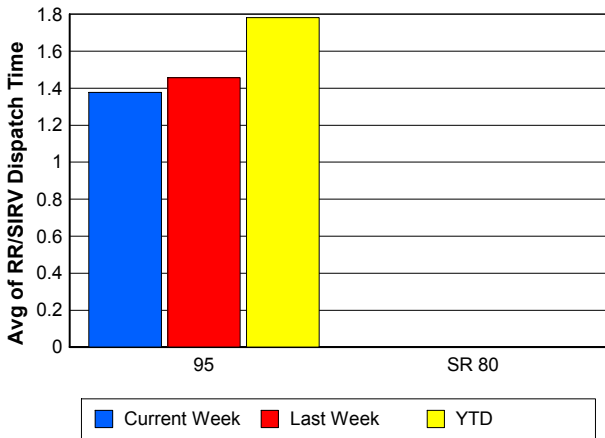
TMC Verification Time



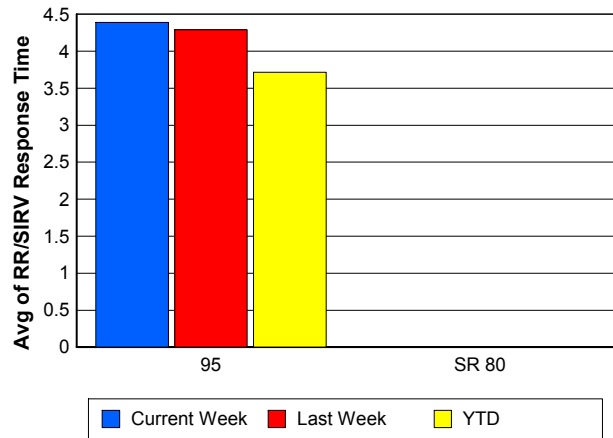
TMC Response Time



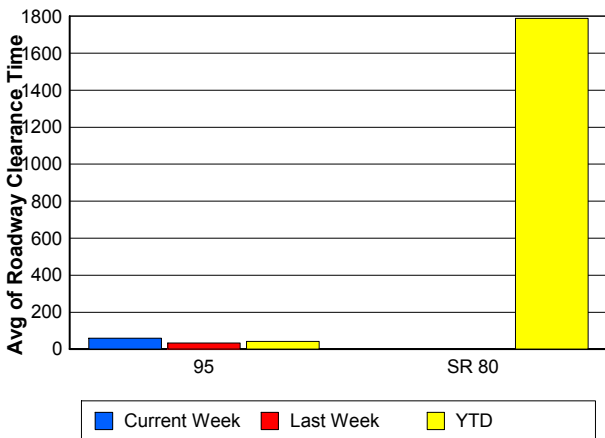
Road Ranger / SIRV Dispatch Time



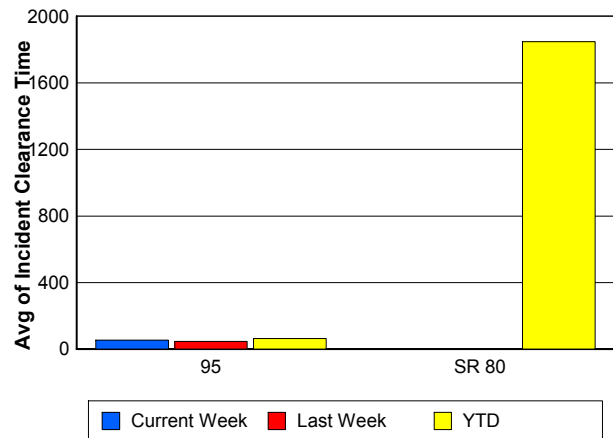
Road Ranger / SIRV Response Time



Roadway Clearance Time (2A)



Incident Clearance Time (3B)



Performance Measures by Event Type

Accident

	<u>Current Week</u>	<u>Last Week</u>	<u>YTD</u>
Number of Events	36	37	1,260
Number of Incidents	12	18	598
TMC Detection (min.)	0.09	0.00	0.02
TMC Verification (min.)	7.00	4.78	4.61
TMC Response (min.)	8.59	6.12	8.19
RR Dispatch Time (min.)	1.98	1.06	2.64
RR Response Time (min.)	6.61	5.06	5.54
Event Clearance (min.)	56.77	55.67	58.71
Roadway Clearance (min.)	64.46	35.29	45.46
Incident Clearance (min.)	73.14	55.71	73.11
# of Events w/ RR/SIRV	36	37	1,033
RR/SIRV Assists	36	37	1,033
RR/SIRV Activities	41	55	1,317

Debris on Roadway

	<u>Current Week</u>	<u>Last Week</u>	<u>YTD</u>
Number of Events	32	32	1,071
Number of Incidents	2	0	36
TMC Detection (min.)	0.00	0.00	0.00
TMC Verification (min.)	10.08	7.16	7.68
TMC Response (min.)	10.07	6.98	7.92
RR Dispatch Time (min.)	2.29	0.74	1.86
RR Response Time (min.)	7.78	6.24	6.07
Event Clearance (min.)	13.42	11.43	12.08
Roadway Clearance (min.)	26.62		20.62
Incident Clearance (min.)	28.32		23.77
# of Events w/ RR/SIRV	32	31	1,054
RR/SIRV Assists	32	31	1,054
RR/SIRV Activities	35	31	1,128

Disabled Vehicle

	<u>Current Week</u>	<u>Last Week</u>	<u>YTD</u>
Number of Events	426	400	11,243
Number of Incidents	5	5	194
TMC Detection (min.)	0.00	0.00	0.00
TMC Verification (min.)	3.19	4.00	3.44
TMC Response (min.)	4.79	5.51	4.61
RR Dispatch Time (min.)	1.18	1.55	1.49
RR Response Time (min.)	3.66	4.01	3.22
Event Clearance (min.)	16.38	16.71	17.90
Roadway Clearance (min.)	31.26	18.22	26.37
Incident Clearance (min.)	43.97	19.28	36.38
# of Events w/ RR/SIRV	421	396	10,495
RR/SIRV Assists	421	396	10,495
RR/SIRV Activities	452	433	11,555

Emergency Vehicles

	<u>Last Week</u>	<u>YTD</u>
Number of Events	1	15
Number of Incidents	1	9
TMC Detection (min.)	0.00	0.00
TMC Verification (min.)	0.00	2.12
TMC Response (min.)		9.04
RR Dispatch Time (min.)		3.11
RR Response Time (min.)		5.54
Event Clearance (min.)	10.95	47.51
Roadway Clearance (min.)	5.03	41.91
Incident Clearance (min.)	10.95	47.66
# of Events w/ RR/SIRV	0	7
RR/SIRV Assists	0	7
RR/SIRV Activities	0	9

Other

	<u>Current Week</u>	<u>Last Week</u>	<u>YTD</u>
Number of Events	17	9	859
Number of Incidents	0	0	7
TMC Detection (min.)	0.00	0.00	0.00
TMC Verification (min.)	0.00	2.01	1.24
TMC Response (min.)	19.26	8.27	15.37
RR Dispatch Time (min.)	0.89	1.61	7.69
RR Response Time (min.)	18.55	7.41	6.78
Event Clearance (min.)	15.89	10.09	35.71
Roadway Clearance (min.)			40.35
Incident Clearance (min.)			52.93
# of Events w/ RR/SIRV	14	6	288
RR/SIRV Assists	14	6	288
RR/SIRV Activities	8	4	246

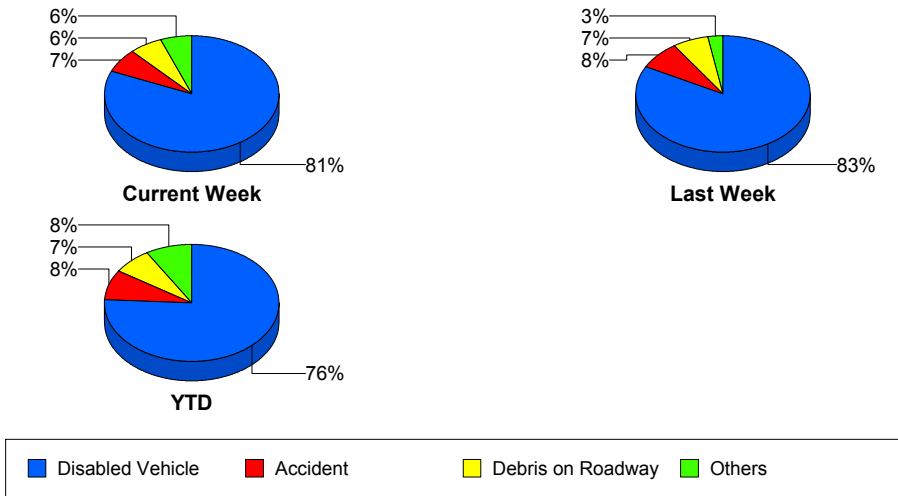
Police Activity

	<u>Current Week</u>	<u>Last Week</u>	<u>YTD</u>
Number of Events	13	3	350
Number of Incidents	11	2	53
TMC Detection (min.)	0.68	0.00	0.08
TMC Verification (min.)	2.94	5.63	0.53
TMC Response (min.)	11.50	14.37	12.60
RR Dispatch Time (min.)	5.32	1.31	5.83
RR Response Time (min.)	5.34	13.07	6.59
Event Clearance (min.)	39.25	18.37	28.54
Roadway Clearance (min.)	70.99	26.62	70.24
Incident Clearance (min.)	43.78	20.06	86.34
# of Events w/ RR/SIRV	11	2	49
RR/SIRV Assists	11	2	49
RR/SIRV Activities	10	2	54

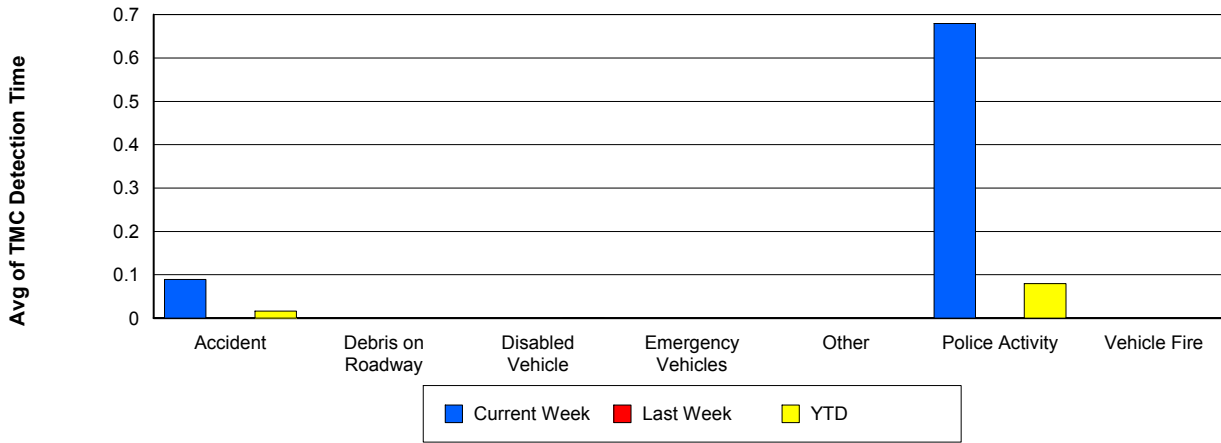
Vehicle Fire

	<u>Last Week</u>	<u>YTD</u>
Number of Events	1	36
Number of Incidents	1	28
TMC Detection (min.)	0.00	0.00
TMC Verification (min.)	2.72	3.20
TMC Response (min.)	2.70	18.83
RR Dispatch Time (min.)	1.22	13.13
RR Response Time (min.)	1.48	5.71
Event Clearance (min.)	133.02	85.56
Roadway Clearance (min.)	135.00	67.08
Incident Clearance (min.)	133.02	93.23
# of Events w/ RR/SIRV	1	23
RR/SIRV Assists	1	23
RR/SIRV Activities	2	33

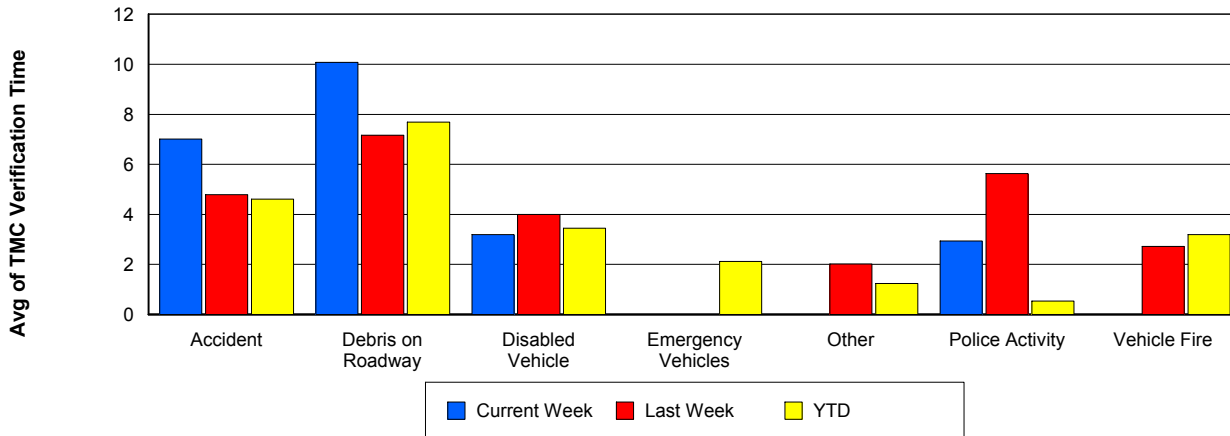
Number of Events / Event Type



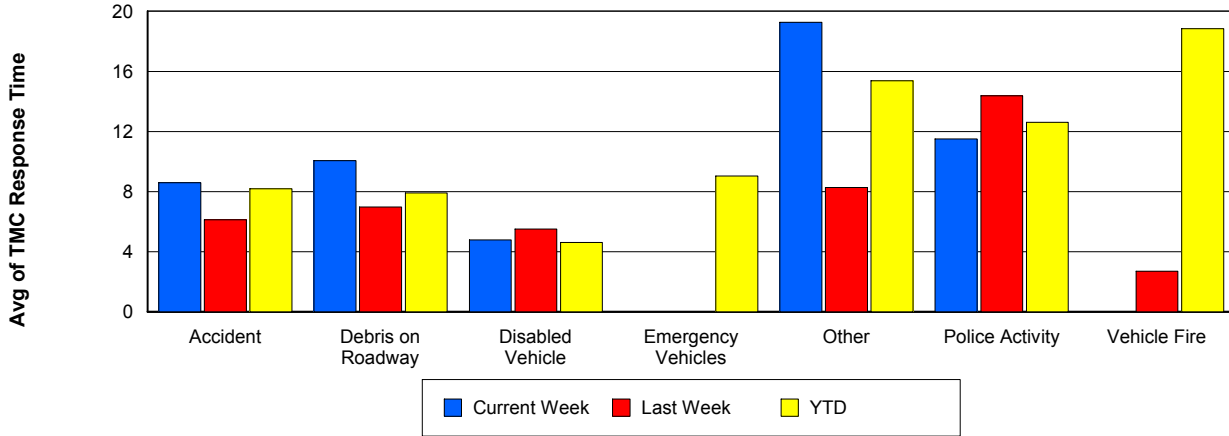
TMC Detection Time



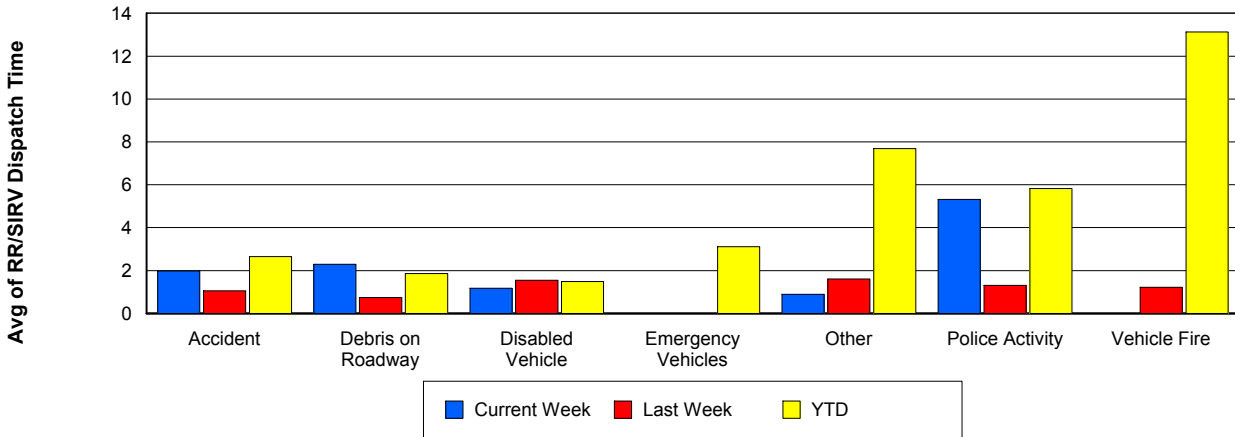
TMC Verification Time



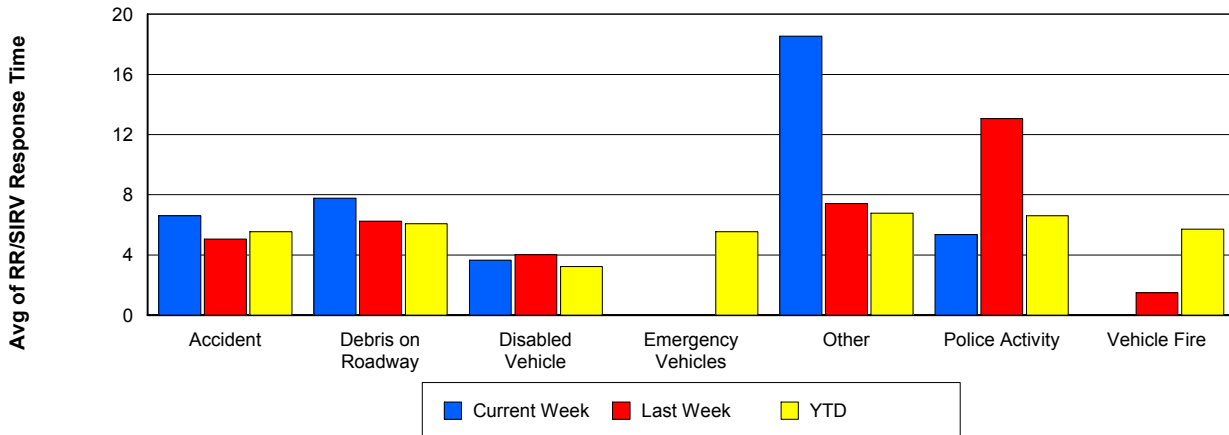
TMC Response Time



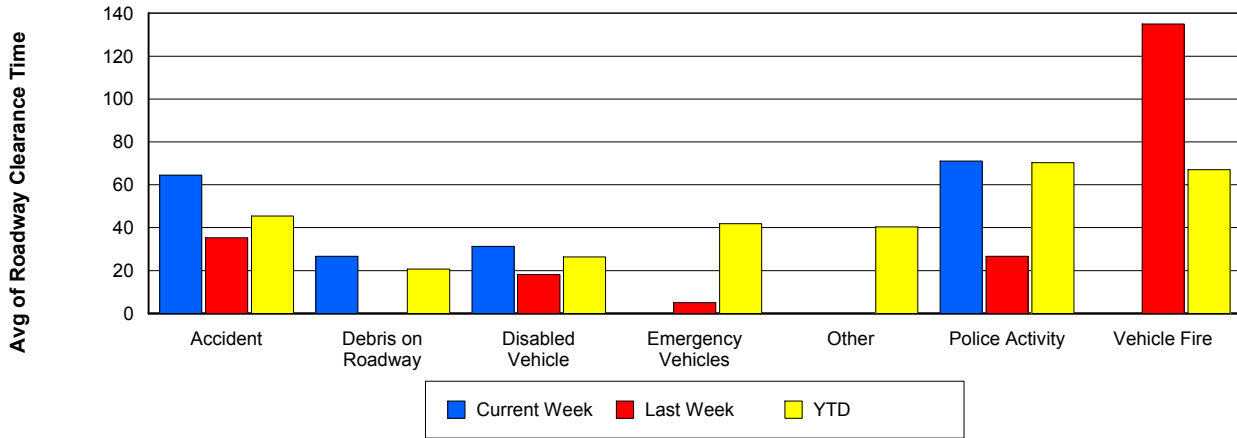
Road Ranger / SIRV Dispatch Time



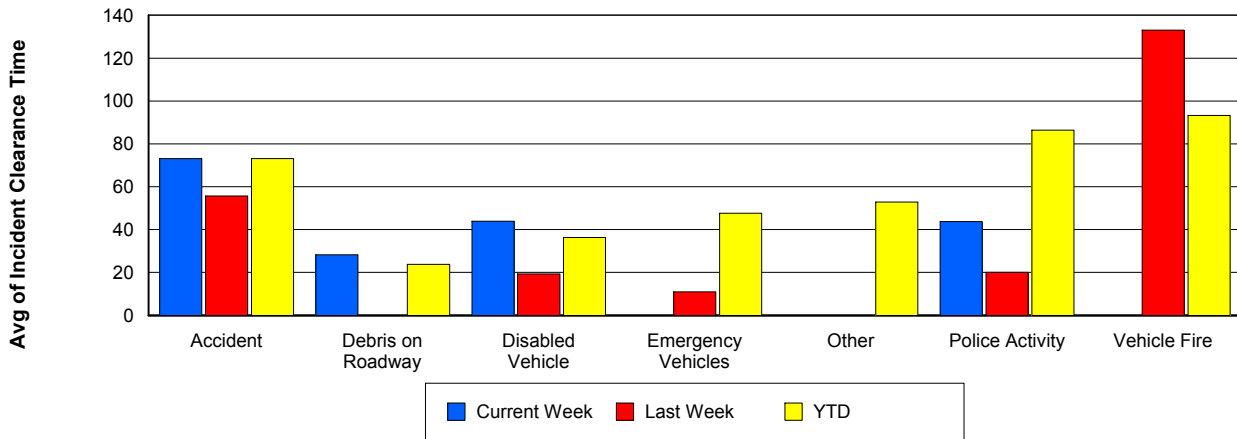
Road Ranger / SIRV Response Time



Roadway Clearance Time (2A)



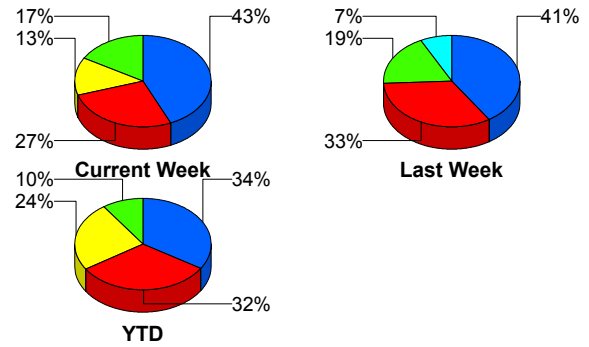
Incident Clearance Time (3B)



Incident Detection Methods

	Current Week	Last Week	YTD
Broward CCTV	0	1	8
Broward Road Ranger	0	1	8
Broward TMC	1	2	5
Broward VideoWall	0	0	1
Construction CEI	1	0	2
District 4	0	1	23
Emergency Operations	0	0	1
FDOT Maintenance	1	0	1
FHP	13	11	314
I-95 Construction PIO	0	0	3
ITMS	1	0	13
ITMS CCTV	4	2	226
Local Police	0	0	1
Media	0	0	2
Motorist	1	0	17
Palm Beach Road Ran	8	9	296
Road Watcher	0	0	1
SmarTraveler (511)	0	0	4
Total	30	27	926

Total Incidents by Detection Method

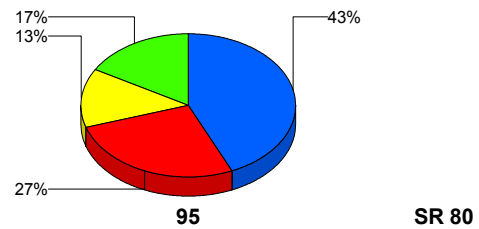


Incident Detection Methods by Roadway

		Current Week	Last Week	YTD
95	Broward CCTV	0	1	8
	Broward Road Ranger	0	1	8
	Broward TMC	1	2	5
	Broward VideoWall	0	0	1
	Construction CEI	1	0	2
	District 4	0	1	23
	FDOT Maintenance	1	0	1
	FHP	13	11	313
	I-95 Construction PIO	0	0	3
	ITMS	1	0	12
	ITMS CCTV	4	2	226
	Local Police	0	0	1
	Media	0	0	2
	Motorist	1	0	17
	Palm Beach Road Ran	8	9	296
	Road Watcher	0	0	1
	SmarTraveler (511)	0	0	4
Total	30	27	923	
SR 80	Emergency Operations	0	0	1
	FHP	0	0	1
	ITMS	0	0	1
	Total	0	0	3
Total	30	27	926	

Total Events by Roadway and Detection Method

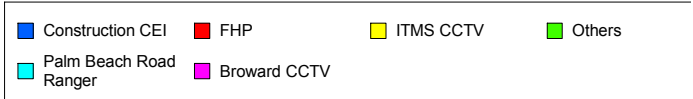
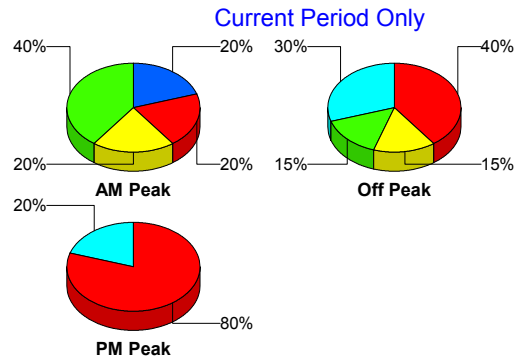
Current Period Only



Incident Detection Methods by Peak Period

		Current Week	Last Week	YTD
AM Peak	Broward CCTV	0	0	2
	Broward Road Ranger	0	0	3
	Broward TMC	0	0	2
	Construction CEI	1	0	1
	District 4	0	0	11
	FHP	1	3	93
	I-95 Construction PIO	0	0	1
	ITMS	0	0	5
	ITMS CCTV	1	0	40
	Motorist	1	0	8
	Palm Beach Road Ran	1	3	96
	Road Watcher	0	0	1
	SmarTraveler (511)	0	0	3
	Total	5	6	266
	Off Peak	Broward CCTV	0	0
Broward Road Ranger		0	1	2
Broward TMC		1	2	3
Broward VideoWall		0	0	1
Construction CEI		0	0	1
District 4		0	1	9
FDOT Maintenance		1	0	1
FHP		8	6	157
I-95 Construction PIO		0	0	2
ITMS		1	0	7
ITMS CCTV		3	2	121
Motorist		0	0	5
Palm Beach Road Ran		6	5	117
SmarTraveler (511)		0	0	1
Total		20	17	431
PM Peak	Broward CCTV	0	1	2
	Broward Road Ranger	0	0	3

Total Events by Peak Period and Detection Method

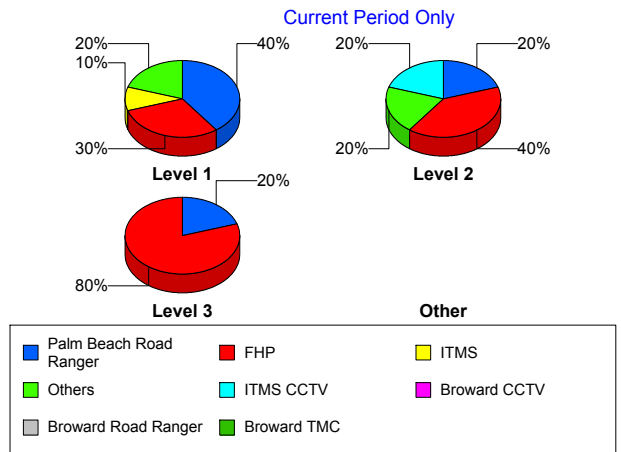


		Current Week	Last Week	YTD
PM Peak	District 4	0	0	3
	Emergency Operations	0	0	1
	FHP	4	2	64
	ITMS	0	0	1
	ITMS CCTV	0	0	65
	Local Police	0	0	1
	Media	0	0	2
	Motorist	0	0	4
	Palm Beach Road Ran	1	1	83
	Total	5	4	229
Total		30	27	926

Incident Detection Methods by Severity

		Current Week	Last Week	YTD
Level 1	Broward CCTV	0	1	6
	Broward Road Ranger	0	0	4
	Broward TMC	0	1	1
	District 4	0	1	16
	FHP	3	3	106
	I-95 Construction PIO	0	0	2
	ITMS	1	0	5
	ITMS CCTV	1	0	98
	Local Police	0	0	1
	Motorist	1	0	11
	Palm Beach Road Ran	4	6	205
	Road Watcher	0	0	1
	SmarTraveler (511)	0	0	1
	Total	10	12	457
	Level 2	Broward Road Ranger	0	0
Broward TMC		1	1	2
Broward VideoWall		0	0	1
Construction CEI		1	0	1

Total Events by Severity and Detection Method



		Current Week	Last Week	YTD
Level 2	District 4	0	0	6
	FDOT Maintenance	1	0	1
	FHP	6	6	157
	I-95 Construction PIO	0	0	1
	ITMS	0	0	6
	ITMS CCTV	3	0	95
	Media	0	0	1
	Motorist	0	0	5
	Palm Beach Road Ran	3	3	75
	SmarTraveler (511)	0	0	3
	Total	15	10	357
Level 3	Broward CCTV	0	0	2
	Broward Road Ranger	0	1	1
	Broward TMC	0	0	2
	Construction CEI	0	0	1
	District 4	0	0	1
	Emergency Operations	0	0	1
	FHP	4	2	51
	ITMS	0	0	2
	ITMS CCTV	0	2	33
	Media	0	0	1
	Motorist	0	0	1
	Palm Beach Road Ran	1	0	16
	Total	5	5	112
Total		30	27	926

Road Ranger / SIRV Performance Measures

Road Ranger / SIRV Performance By County

Values presented are:
 - Total Events with a RR/SIRV Response
 - Total RR/SIRV Responses,
 - Total Activities Performed

	Current We	Last Week	YTD
Palm Beach	647	608	17,026
	662	640	17,322
	706	684	18,850

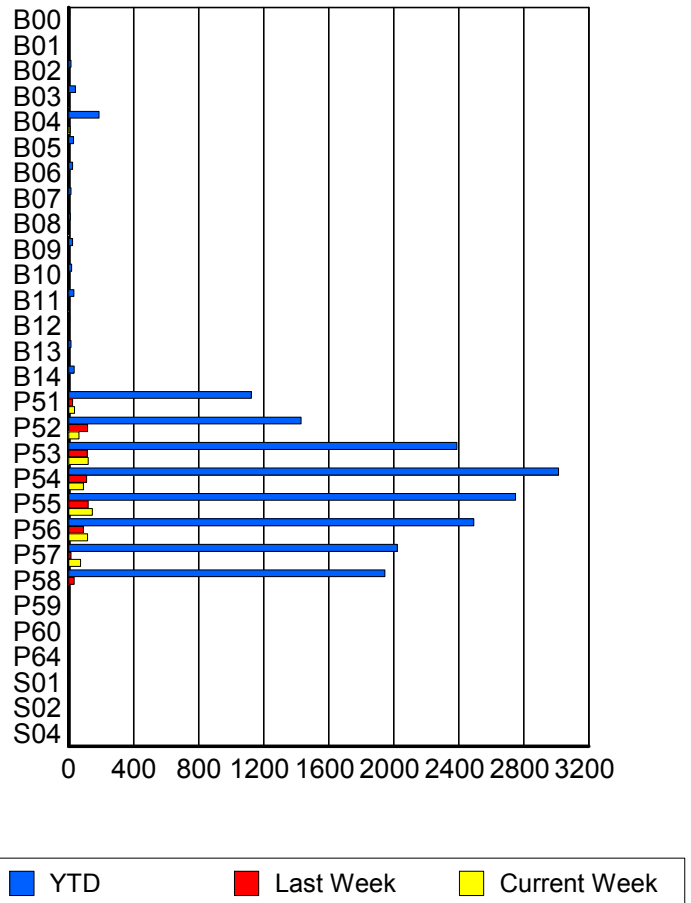
RR/SIRV Responses per County



Road Ranger / SIRV Performance By Truck

	Current We	Last Week	YTD
B00	0	0	6
	0	0	6
	0	0	6
B01	0	0	1
	0	0	1
	0	0	1
B02	0	1	14
	0	1	14
	0	1	15
B03	2	0	43
	2	0	43
	2	0	44
B04	9	5	187
	9	5	188
	9	5	212
B05	0	0	29
	0	0	30
	0	0	31
B06	0	0	24
	0	0	25
	0	0	27
B07	0	0	14
	0	0	14
	0	0	14
B08	2	1	11
	2	1	11
	3	2	14

RR/SIRV Responses per Truck



	Current We	Last Week	YTD
B09	0	1	24
	0	1	25
	0	2	26
B10	0	1	18
	0	1	19
	0	1	19
B11	3	2	33
	3	2	33
	3	2	34
B12	0	0	6
	0	0	6
	0	0	7
B13	0	0	14
	0	0	14
	0	0	15
B14	0	1	34
	0	1	35
	0	1	37
P51	35	24	1,113
	36	24	1,124
	40	24	1,176
P52	63	115	1,424
	63	116	1,430
	66	126	1,536
P53	119	113	2,358
	121	115	2,390
	134	123	2,532
P54	90	109	2,985
	91	110	3,014
	97	117	3,236
P55	145	120	2,730
	146	121	2,750
	153	129	2,945
P56	114	88	2,464
	116	91	2,492
	124	97	2,681
P57	73	15	2,003
	73	15	2,023
	75	15	2,157
P58	0	34	1,917
	0	35	1,946
	0	37	2,073
P59	0	1	1
	0	1	1
	0	2	2

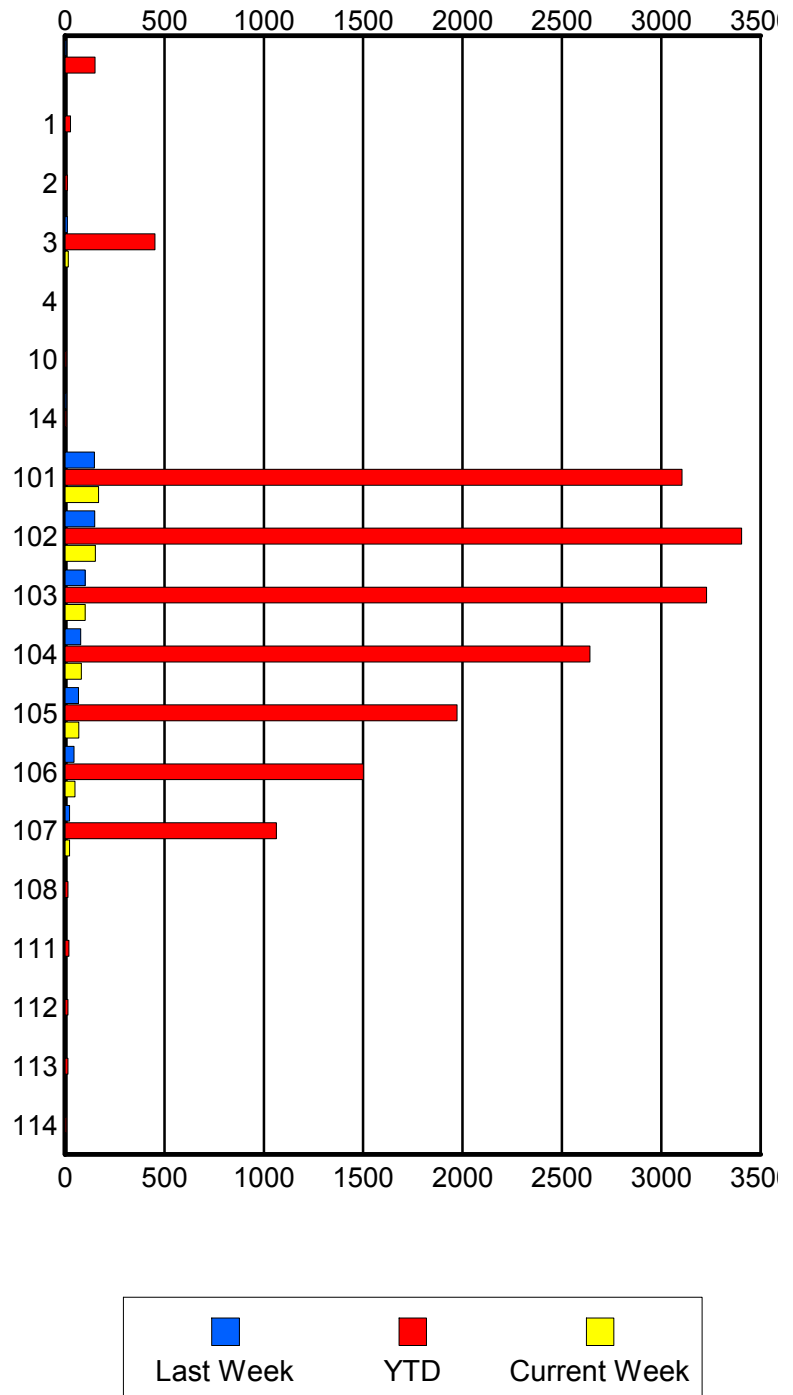
	Current We	Last Week	YTD
P60	0	0	1
	0	0	1
	0	0	1
P64	0	0	1
	0	0	1
	0	0	1
S01	0	0	3
	0	0	3
	0	0	3
S02	0	0	3
	0	0	3
	0	0	3
S04	0	0	2
	0	0	2
	0	0	2

Road Ranger / SIRV Performance By Beat

	Current We	Last Week	YTD
	0	7	150
	0	7	151
	0	8	156
1	0	0	26
	0	0	27
	0	0	28
2	0	0	11
	0	0	11
	0	0	13
3	16	11	440
	16	12	453
	17	14	490
4	0	0	2
	0	0	2
	0	0	2
10	0	0	6
	0	0	6
	0	0	9
14	0	7	7
	0	7	7
	0	7	7
101	167	143	3,073
	168	148	3,105
	182	157	3,336
102	152	148	3,371
	153	150	3,404
	159	159	3,618
103	99	100	3,191
	102	102	3,228
	110	113	3,476
104	81	75	2,611
	82	78	2,641
	89	84	2,829
105	68	68	1,956
	69	68	1,972
	70	73	2,096
106	50	45	1,483
	50	45	1,501
	54	46	1,604
107	22	23	1,050
	22	23	1,063
	25	23	1,116
108	0	0	13
	0	0	14
	0	0	14

Values presented are:
 - Total Events with a RR/SIRV Response
 - Total RR/SIRV Responses,
 - Total Activities Performed

RR/SIRV Responses per Beat



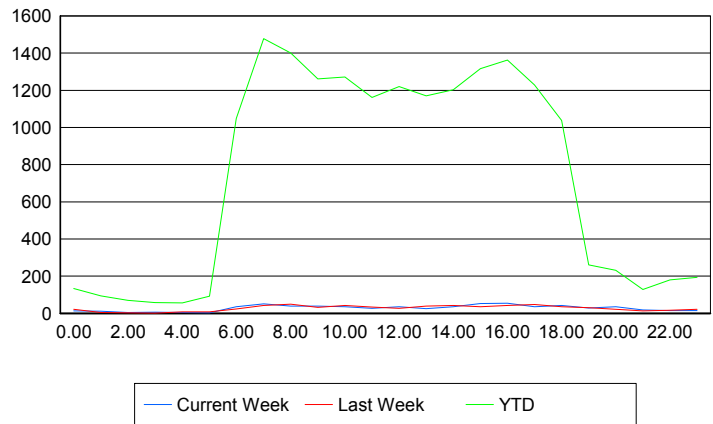
	Current We	Last Week	YTD
111	0	0	18
	0	0	19
	0	0	20
112	0	0	14
	0	0	15
	0	0	16
113	0	0	13
	0	0	14
	0	0	14
114	0	0	6
	0	0	6
	0	0	6

Road Ranger / SIRV Performance By Time of Day

Values presented are:
- Total Events with a RR/SIRV Response
- Total RR/SIRV Responses,
- Total Activities Performed

	Current We	Last Week	YTD
12AM-1AM	13	20	129
	13	21	134
	14	25	145
1AM-2AM	12	4	90
	12	4	94
	14	4	101
2AM-3AM	5	2	68
	5	2	70
	5	2	74
3AM-4AM	7	1	54
	7	1	57
	7	1	58
4AM-5AM	5	8	51
	5	8	56
	5	9	62
5AM-6AM	2	6	85
	2	8	92
	2	8	96
6AM-7AM	32	22	1,002
	35	23	1,048
	38	24	1,103
7AM-8AM	48	40	1,406
	51	43	1,478
	55	44	1,586
8AM-9AM	38	47	1,341
	39	49	1,401
	40	50	1,495

Number of Responses / Hour of the Day



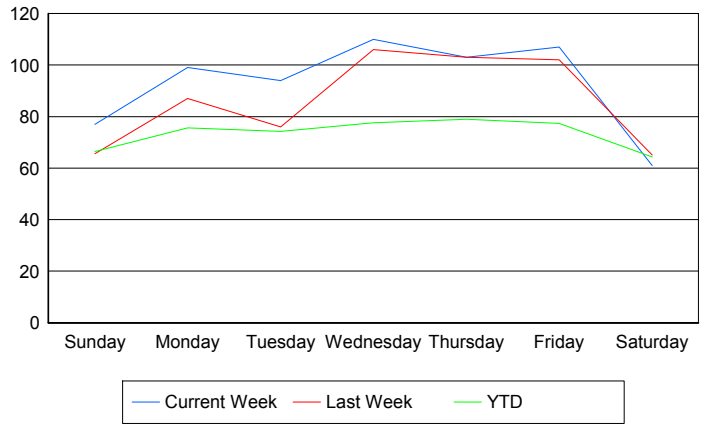
	Current We	Last Week	YTD
9AM-10AM	38	31	1,221
	38	32	1,262
	40	34	1,370
10AM-11AM	35	40	1,226
	36	42	1,271
	38	45	1,344
11AM-12PM	27	31	1,129
	27	33	1,162
	27	34	1,260
12PM-1PM	36	26	1,172
	36	27	1,220
	38	28	1,306
1PM-2PM	24	36	1,133
	25	38	1,171
	28	40	1,259
2PM-3PM	33	40	1,154
	35	43	1,203
	38	48	1,278
3PM-4PM	52	34	1,272
	52	35	1,317
	59	36	1,405
4PM-5PM	53	40	1,325
	54	43	1,363
	55	49	1,449
5PM-6PM	36	45	1,192
	36	48	1,228
	40	50	1,303
6PM-7PM	42	35	1,024
	43	36	1,038
	43	40	1,095
7PM-8PM	28	30	253
	28	31	260
	32	33	277
8PM-9PM	33	21	222
	35	22	232
	38	22	243
9PM-10PM	19	12	120
	19	13	129
	21	13	138
10PM-11PM	15	16	168
	15	16	179
	15	21	194
11PM-12AM	14	21	189
	14	22	193
	14	24	209

Road Ranger / SIRV Performance By Day of Week

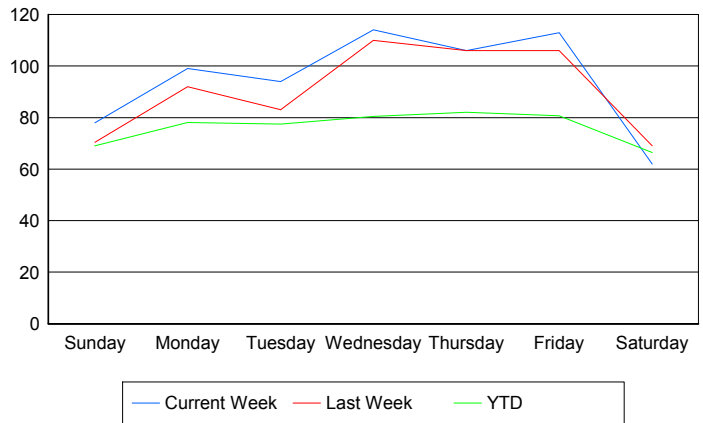
Values presented are:
 - Total Events with a RR/SIRV Response
 - Total RR/SIRV Responses,
 - Total Activities Performed

	Current We	Last Week	YTD
Sunday	73	69	529
	74	74	550
	80	81	592
Monday	99	87	3,114
	99	92	3,188
	105	100	3,403
Tuesday	94	76	3,066
	94	83	3,174
	101	90	3,399
Wednesday	110	106	3,217
	114	110	3,332
	121	115	3,565
Thursday	103	103	3,282
	106	106	3,372
	115	110	3,655
Friday	107	102	3,256
	113	106	3,384
	119	115	3,607
Saturday	61	65	578
	62	69	596
	65	73	629

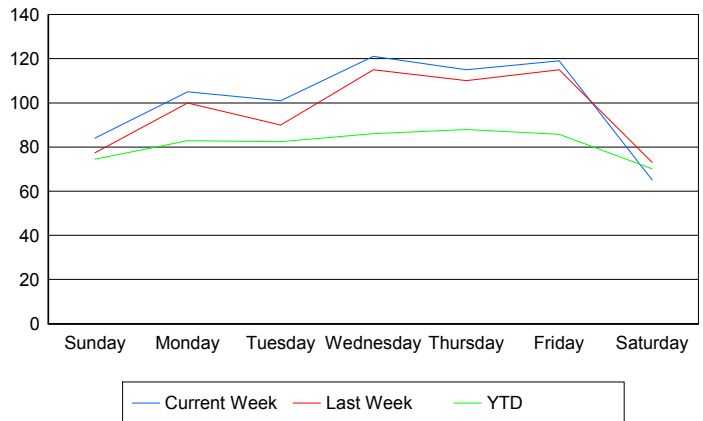
Avg # of events with a RR/SIRV Response per Day of the Week



Avg # of RR/SIRV Responses per Day of the Week



Avg # of RR/SIRV Activities Performed per Day of the Week



Road Ranger / SIRV Responses per Time of Day and Day of Week

