



Weekly Performance Measures Report Palm Beach County



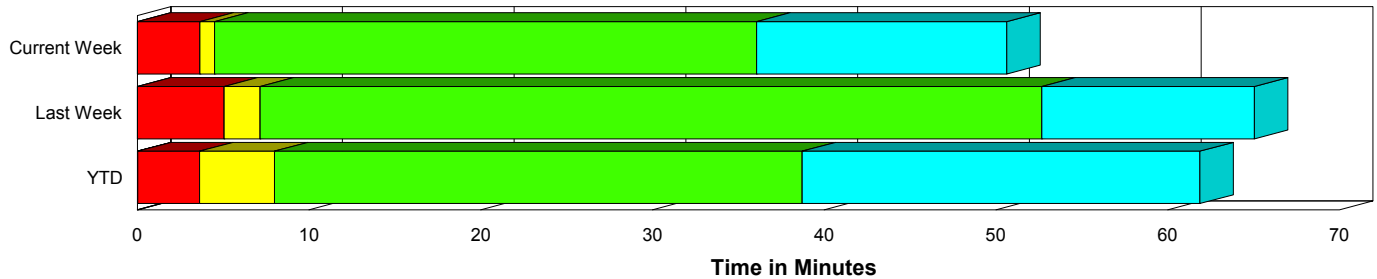
Created on:
October 26, 2009
8:59 am

Period From Oct 18, 2009 to Oct 24, 2009

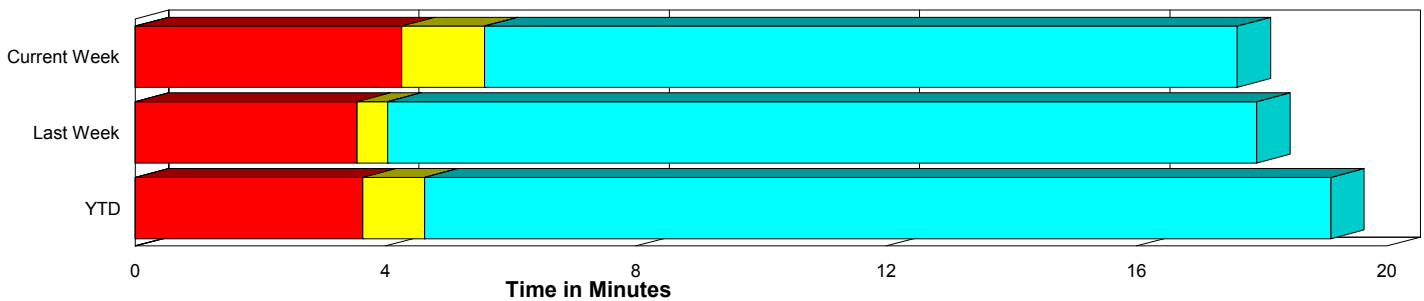
Performance Measures Summary

	Traffic Events (No Lanes Blocked)			Incidents (Lanes Blocked)		
	<u>This Week</u>	<u>Last Week</u>	<u>YTD</u>	<u>This Week</u>	<u>Last Week</u>	<u>YTD</u>
Number of Events	457	431	13,496	27	18	896
TMC Detection (min.)	0.00	0.00	0.00	0.00	0.00	0.03
TMC Verification (min.)	4.26	3.54	3.63	3.65	5.06	3.60
TMC Response (min.)	5.75	4.11	5.20	4.79	7.15	8.64
RR Dispatch Time (min.)	1.50	1.36	1.68	0.69	1.70	3.75
RR Response Time (min.)	4.30	3.07	3.62	4.10	5.46	4.87
Roadway Clearance (min.)				34.06	52.67	47.81
Event Clearance (min.)	17.77	17.99	19.68	47.53	65.02	70.63
# of Events w/ RR/SIRV	449	427	11,789	25	18	713
RR/SIRV Responses	449	427	11,789	25	18	713
RR/SIRV Activities	487	463	12,829	41	25	1,035

Incident Clearance Time-Line



Traffic Event (Non-Lane Blockage) Time-Line



■ Avg. TMC Detection Time	■ Avg. Time from TMC Response to Roadway Clearance*
■ Avg. Time from TMC Detection to TMC Verification	■ Avg. Time from Roadway Clearance to Incident/Event Clearance**
■ Avg. Time from TMC Verification to TMC Response	

* Roadway clearance equals all travel lanes open

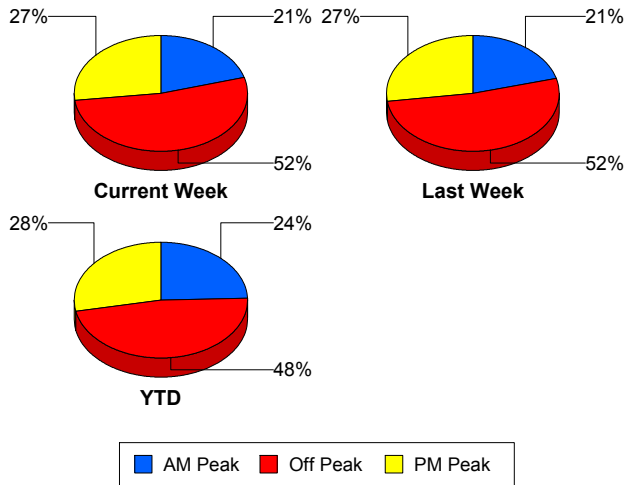
** Incident clearance equals time when last responder has left the scene

Performance Measures by Peak Period

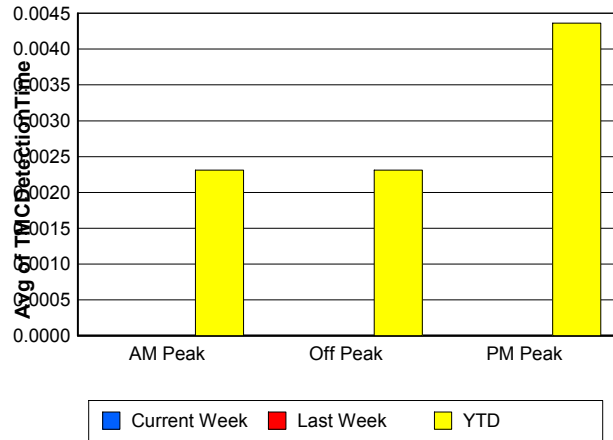
Note: AM peak period is defined as 6am to 10am and PM peak period is defined as 3pm to 7pm.

	AM Peak			Off Peak			PM Peak		
	<u>Current Week</u>	<u>Last Week</u>	<u>YTD</u>	<u>Current Week</u>	<u>Last Week</u>	<u>YTD</u>	<u>Current Week</u>	<u>Last Week</u>	<u>YTD</u>
Number of Events	100	93	3,506	253	234	6,848	131	122	4,038
Number of Incidents	6	5	261	17	11	411	4	2	224
TMC Detection (min.)	0.00	0.00	0.00	0.00	0.00	0.00	0.00	0.00	0.00
TMC Verification (min.)	2.29	2.60	3.16	4.37	3.06	3.34	5.43	5.40	4.54
TMC Response (min.)	4.65	3.30	4.54	5.66	3.92	6.01	6.55	5.54	5.31
RR Dispatch Time (min.)	1.39	1.30	1.26	1.17	1.42	2.39	2.08	1.33	1.45
RR Response Time (min.)	3.30	2.10	3.32	4.58	3.04	3.78	4.46	4.21	3.87
Event Clearance (min.)	16.62	22.78	22.19	19.11	19.41	24.21	22.21	18.56	21.11
Roadway Clearance (min.)	40.55	42.59	39.58	33.64	58.70	48.93	26.09	44.74	55.33
Incident Clearance (min.)	54.97	58.28	67.50	46.97	70.33	70.16	38.79	52.69	75.13
# of Events w/ RR/SIRV	98	92	3,357	250	233	5,331	126	120	3,814
RR/SIRV Responses	98	92	3,357	250	233	5,331	126	120	3,814
RR/SIRV Activities	104	99	3,790	278	262	5,903	146	127	4,171

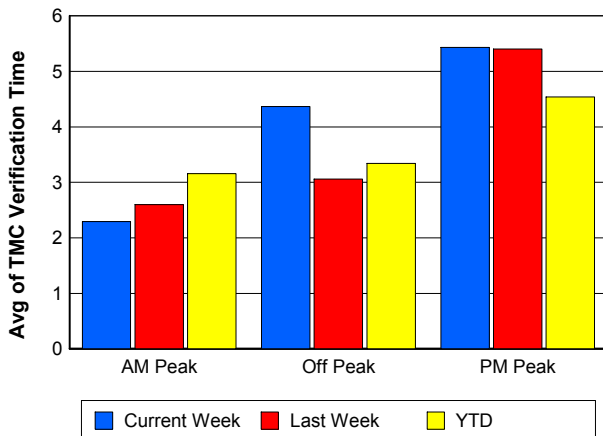
Number of Events / Peak Period



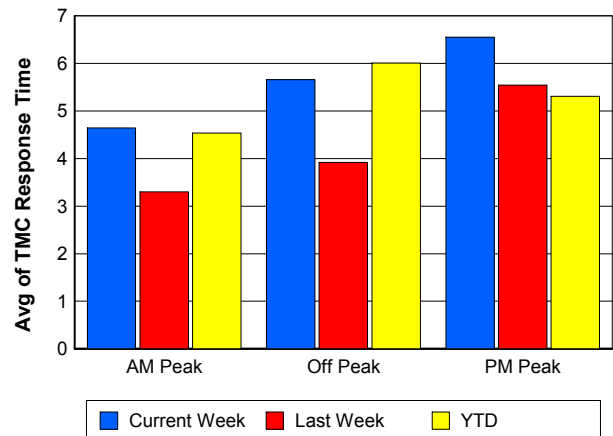
TMC Detection Time



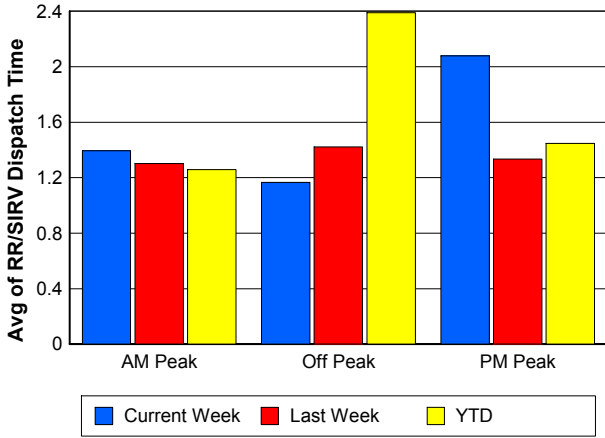
TMC Verification Time



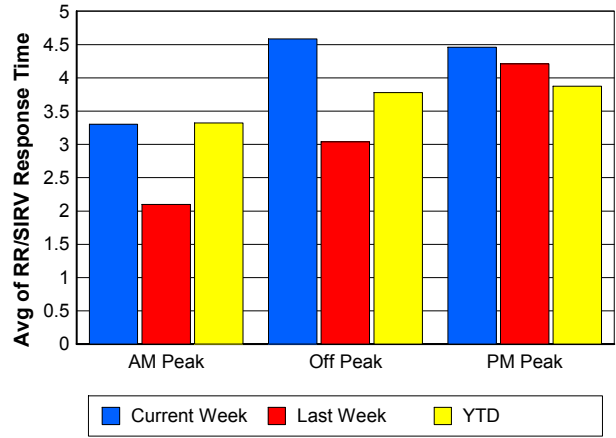
TMC Response Time



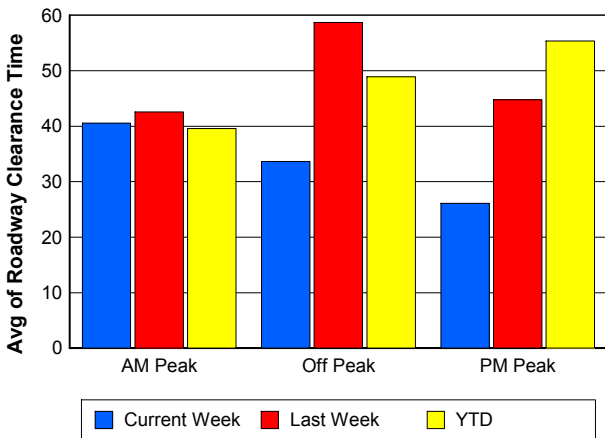
Road Ranger / SIRV Dispatch Time



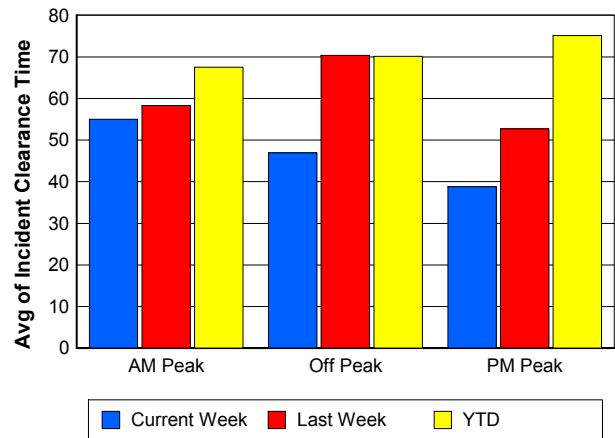
Road Ranger / SIRV Response Time



Roadway Clearance Time (2A)



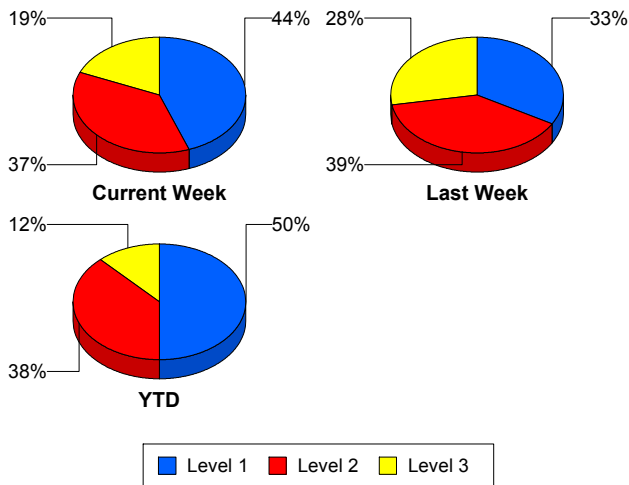
Incident Clearance Time (3B)



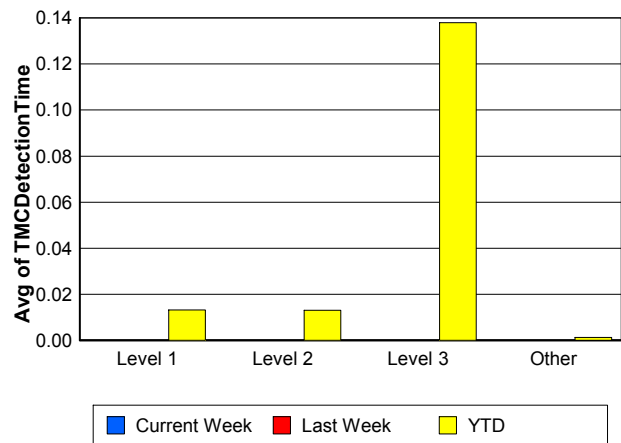
Performance Measures by Severity

	Level 1			Level 2			Level 3			Other		
	<u>This Week</u>	<u>Last Week</u>	<u>YTD</u>	<u>This Week</u>	<u>Last Week</u>	<u>YTD</u>	<u>This Week</u>	<u>Last Week</u>	<u>YTD</u>	<u>This Week</u>	<u>Last Week</u>	<u>YTD</u>
Number of Events	12	6	447	10	7	342	5	5	107	457	431	13,496
Number of Incidents	12	6	447	10	7	342	5	5	107	0	0	0
TMC Detection (min.)	0.00	0.00	0.01	0.00	0.00	0.01	0.00	0.00	0.14	0.00	0.00	0.00
TMC Verification (min.)	1.83	0.70	2.17	6.66	10.45	5.18	1.99	2.74	4.54	4.26	3.54	3.63
TMC Response (min.)	2.41	3.27	4.23	6.65	13.65	9.48	6.66	2.73	29.00	5.75	4.11	5.20
RR Dispatch Time (min.)	0.67	0.24	1.15	0.63	3.71	2.79	0.90	0.62	21.48	1.50	1.36	1.68
RR Resp. Time (min.)	1.74	3.03	3.10	6.02	9.94	6.68	5.76	2.10	7.52	4.30	3.07	3.62
Event Clearance (min.)	35.83	24.79	41.88	61.35	62.40	71.53	47.99	116.99	187.81	17.77	17.99	19.68
Roadway Clear. (min.)	18.03	7.39	14.63	47.24	49.38	53.22	46.15	111.63	169.08			
Incident Clearance (min.)	35.83	24.79	41.88	61.35	62.40	71.53	47.99	116.99	187.81			
# of Events w/ RR/SIRV	11	6	380	10	7	263	4	5	70	449	427	11,789
RR/SIRV Responses	11	6	380	10	7	263	4	5	70	449	427	11,789
RR/SIRV Activities	18	6	487	17	9	429	6	10	119	487	463	12,829

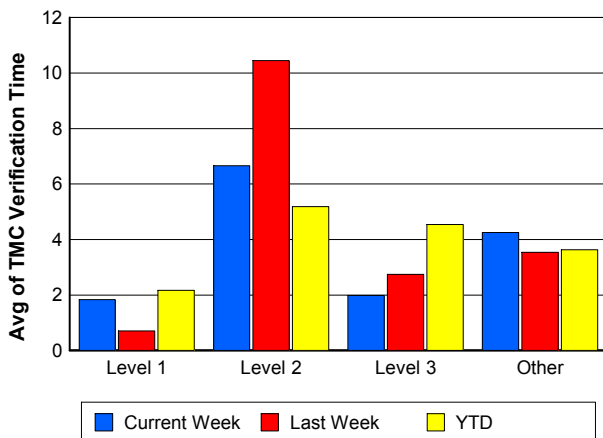
Number of Events / Severity



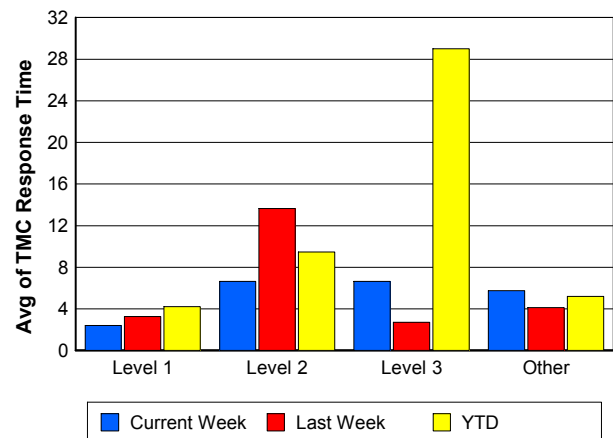
TMC Detection Time



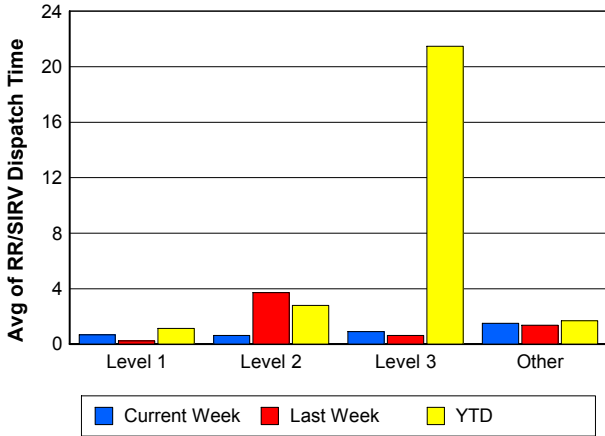
TMC Verification Time



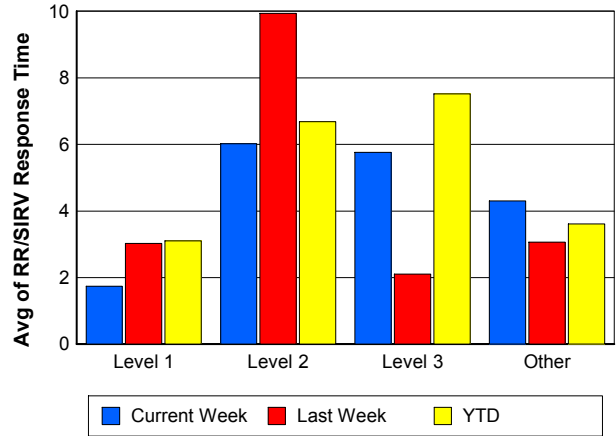
TMC Response Time



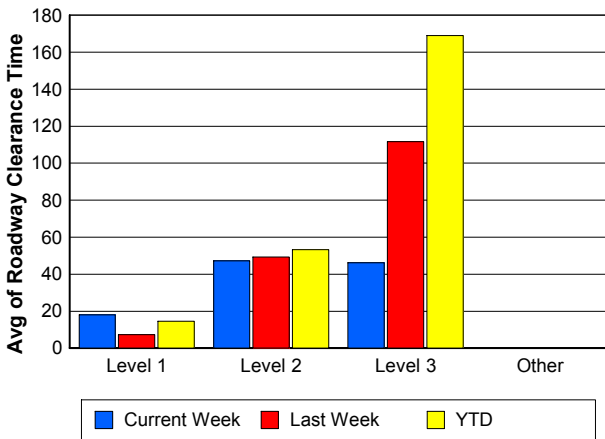
Road Ranger / SIRV Dispatch Time



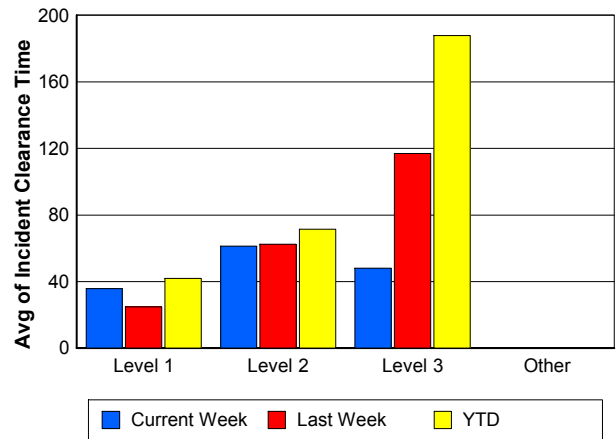
Road Ranger / SIRV Response Time



Roadway Clearance Time (2A)



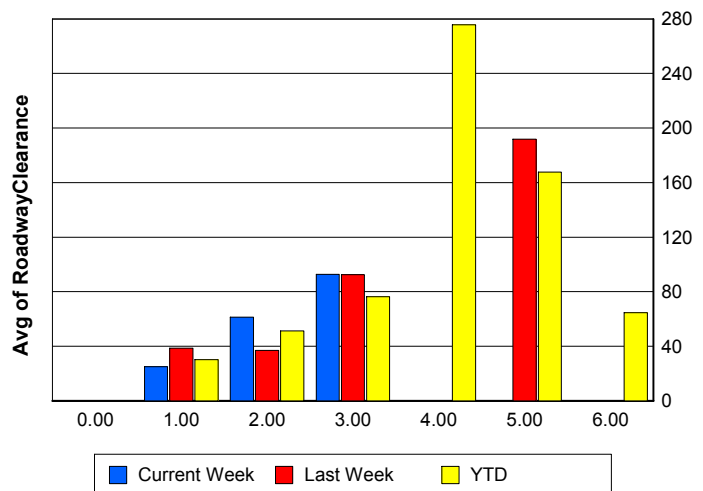
Incident Clearance Time (3B)



Roadway Clearance by Maximum Number of Lanes Blocked

	Current Week	Last Week	YTD
0			
1	24.99	38.59	30.15
2	61.42	37.06	51.32
3	92.80	92.48	76.40
4	0.00	0.00	275.73
5	0.00	191.92	167.73
6	0.00	0.00	64.70

Roadway Clearance Time (2A)



Performance Measures by Roadway

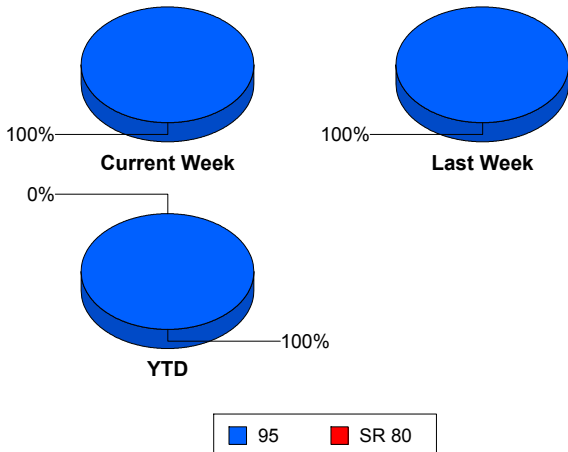
95

	<u>Current Week</u>	<u>Last Week</u>	<u>YTD</u>
Number of Events	484	449	14,388
Number of Incidents	27	18	893
TMC Detection (min.)	0.00	0.00	0.00
TMC Verification (min.)	4.22	3.61	3.63
TMC Response (min.)	5.70	4.24	5.40
RR Dispatch Time (min.)	1.46	1.37	1.80
RR Resp. Time (min.)	4.29	3.17	3.69
Event Clearance (min.)	19.43	19.88	22.47
Roadway Clear. (min.)	34.06	52.67	41.95
Incident Clearance (min.)	47.53	65.02	64.66
# of Events w/ RR/SIRV	474	445	12,502
RR/SIRV Responses	474	445	12,502
RR/SIRV Activities	528	488	13,864

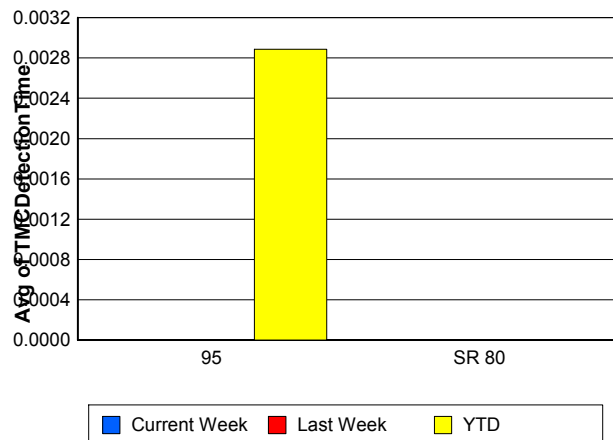
SR 80

	<u>YTD</u>
Number of Events	4
Number of Incidents	3
TMC Detection (min.)	0.00
TMC Verification (min.)	0.00
TMC Response (min.)	
RR Dispatch Time (min.)	
RR Resp. Time (min.)	
Event Clearance (min.)	1,409.98
Roadway Clear. (min.)	1,789.50
Incident Clearance (min.)	1,847.09
# of Events w/ RR/SIRV	0
RR/SIRV Responses	0
RR/SIRV Activities	0

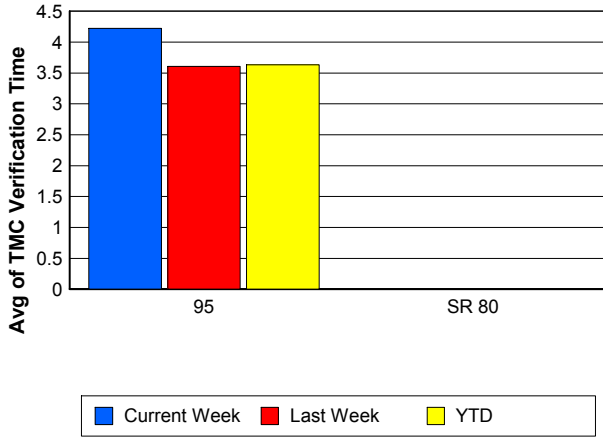
Number of Events / Roadway



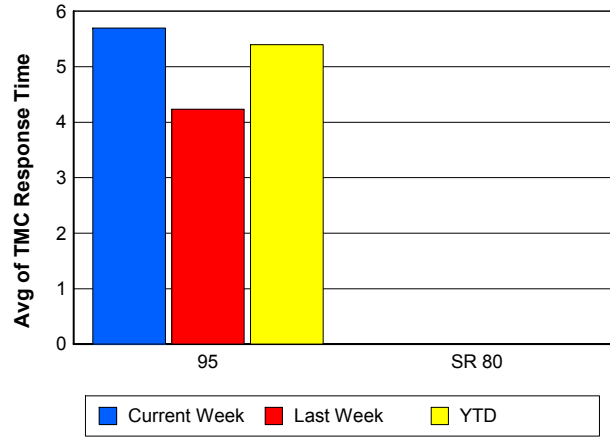
TMC Detection Time



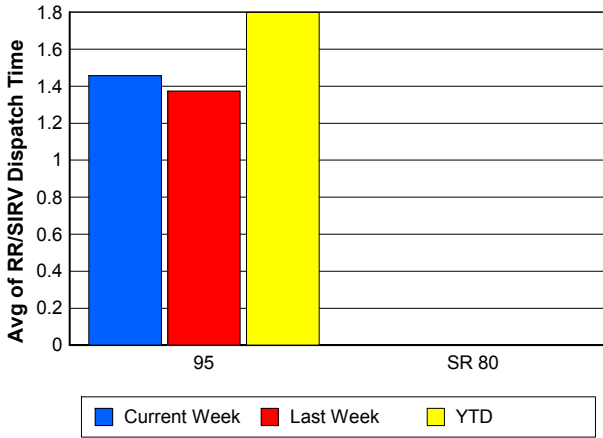
TMC Verification Time



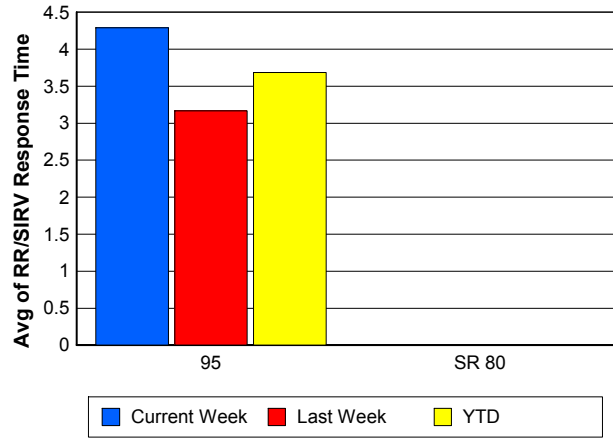
TMC Response Time



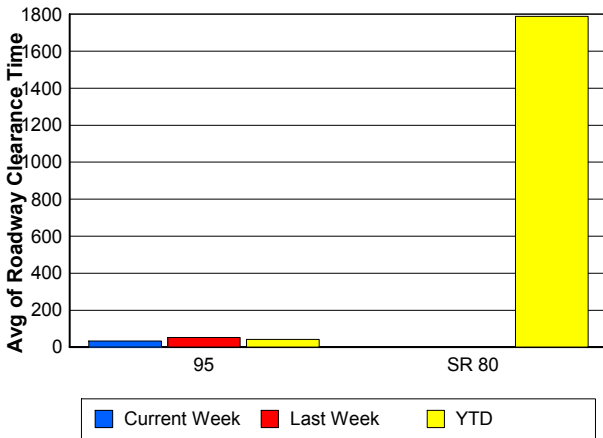
Road Ranger / SIRV Dispatch Time



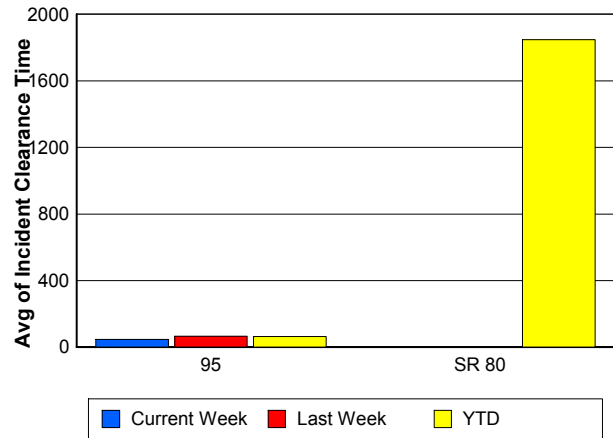
Road Ranger / SIRV Response Time



Roadway Clearance Time (2A)



Incident Clearance Time (3B)



Performance Measures by Event Type

Accident

	<u>Current Week</u>	<u>Last Week</u>	<u>YTD</u>
Number of Events	37	21	1,224
Number of Incidents	18	9	586
TMC Detection (min.)	0.00	0.00	0.01
TMC Verification (min.)	4.78	6.49	4.53
TMC Response (min.)	6.12	8.09	8.18
RR Dispatch Time (min.)	1.06	1.25	2.67
RR Response Time (min.)	5.06	6.84	5.50
Event Clearance (min.)	55.67	61.07	58.77
Roadway Clearance (min.)	35.29	72.92	45.07
Incident Clearance (min.)	55.71	92.32	73.11
# of Events w/ RR/SIRV	37	21	997
RR/SIRV Assists	37	21	997
RR/SIRV Activities	55	27	1,276

Debris on Roadway

	<u>Current Week</u>	<u>Last Week</u>	<u>YTD</u>
Number of Events	32	28	1,039
Number of Incidents	0	1	34
TMC Detection (min.)	0.00	0.00	0.00
TMC Verification (min.)	7.16	6.95	7.61
TMC Response (min.)	6.98	7.46	7.85
RR Dispatch Time (min.)	0.74	1.38	1.84
RR Response Time (min.)	6.24	6.08	6.02
Event Clearance (min.)	11.43	9.43	12.04
Roadway Clearance (min.)		3.93	20.27
Incident Clearance (min.)		3.87	23.51
# of Events w/ RR/SIRV	31	28	1,022
RR/SIRV Assists	31	28	1,022
RR/SIRV Activities	31	29	1,093

Disabled Vehicle

	<u>Current Week</u>	<u>Last Week</u>	<u>YTD</u>
Number of Events	400	392	10,817
Number of Incidents	5	6	189
TMC Detection (min.)	0.00	0.00	0.00
TMC Verification (min.)	4.00	3.25	3.45
TMC Response (min.)	5.51	3.82	4.60
RR Dispatch Time (min.)	1.55	1.34	1.50
RR Response Time (min.)	4.01	2.79	3.20
Event Clearance (min.)	16.71	18.12	17.96
Roadway Clearance (min.)	18.22	31.59	26.24
Incident Clearance (min.)	19.28	38.00	36.18
# of Events w/ RR/SIRV	396	388	10,074
RR/SIRV Assists	396	388	10,074
RR/SIRV Activities	433	426	11,103

Emergency Vehicles

	<u>Current Week</u>	<u>YTD</u>
Number of Events	1	15
Number of Incidents	1	9
TMC Detection (min.)	0.00	0.00
TMC Verification (min.)	0.00	2.12
TMC Response (min.)		9.04
RR Dispatch Time (min.)		3.11
RR Response Time (min.)		5.54
Event Clearance (min.)	10.95	47.51
Roadway Clearance (min.)	5.03	41.91
Incident Clearance (min.)	10.95	47.66
# of Events w/ RR/SIRV	0	7
RR/SIRV Assists	0	7
RR/SIRV Activities	0	9

Other

	<u>Current Week</u>	<u>Last Week</u>	<u>YTD</u>
Number of Events	9	3	842
Number of Incidents	0	0	7
TMC Detection (min.)	0.00	0.00	0.00
TMC Verification (min.)	2.01	0.00	1.26
TMC Response (min.)	8.27	0.00	15.23
RR Dispatch Time (min.)	1.61	5.94	8.04
RR Response Time (min.)	7.41	0.00	6.36
Event Clearance (min.)	10.09	29.07	36.11
Roadway Clearance (min.)			40.35
Incident Clearance (min.)			52.93
# of Events w/ RR/SIRV	6	3	274
RR/SIRV Assists	6	3	274
RR/SIRV Activities	4	2	238

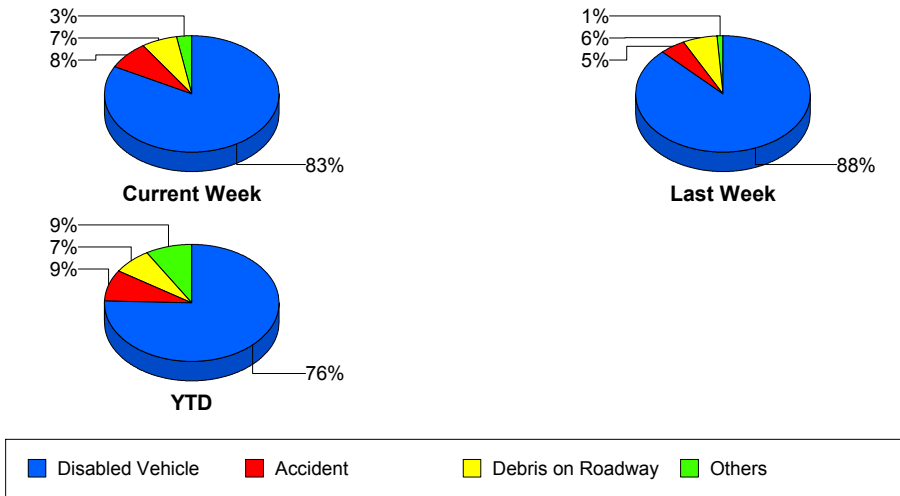
Police Activity

	<u>Current Week</u>	<u>YTD</u>
Number of Events	3	337
Number of Incidents	2	42
TMC Detection (min.)	0.00	0.06
TMC Verification (min.)	5.63	0.44
TMC Response (min.)	14.37	12.84
RR Dispatch Time (min.)	1.31	5.98
RR Response Time (min.)	13.07	6.86
Event Clearance (min.)	18.37	28.13
Roadway Clearance (min.)	26.62	70.05
Incident Clearance (min.)	20.06	97.49
# of Events w/ RR/SIRV	2	38
RR/SIRV Assists	2	38
RR/SIRV Activities	2	44

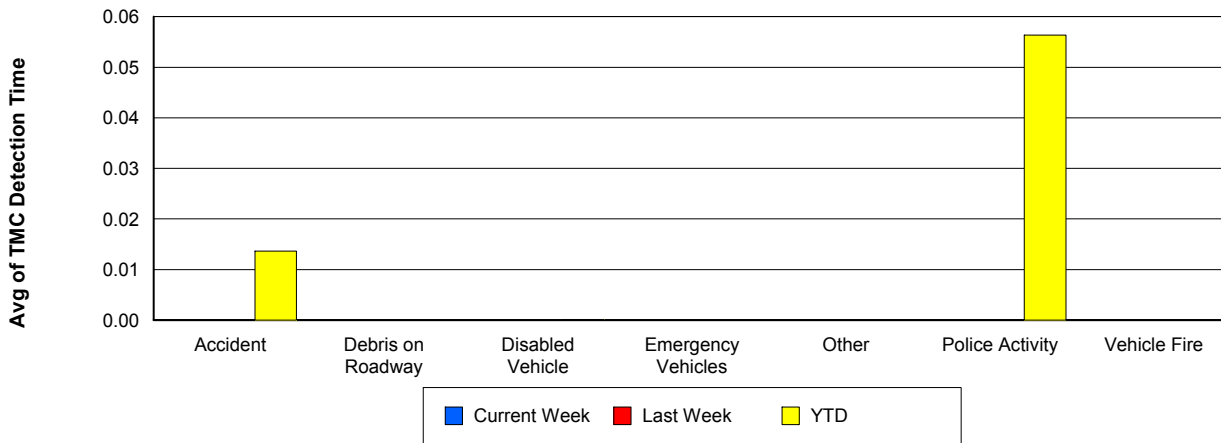
Vehicle Fire

	<u>Current Week</u>	<u>Last Week</u>	<u>YTD</u>
Number of Events	1	2	36
Number of Incidents	1	2	28
TMC Detection (min.)	0.00	0.00	0.00
TMC Verification (min.)	2.72	0.95	3.20
TMC Response (min.)	2.70	0.92	18.83
RR Dispatch Time (min.)	1.22	0.68	13.13
RR Response Time (min.)	1.48	0.25	5.71
Event Clearance (min.)	133.02	53.82	85.56
Roadway Clearance (min.)	135.00	49.20	67.08
Incident Clearance (min.)	133.02	53.82	93.23
# of Events w/ RR/SIRV	1	2	23
RR/SIRV Assists	1	2	23
RR/SIRV Activities	2	2	33

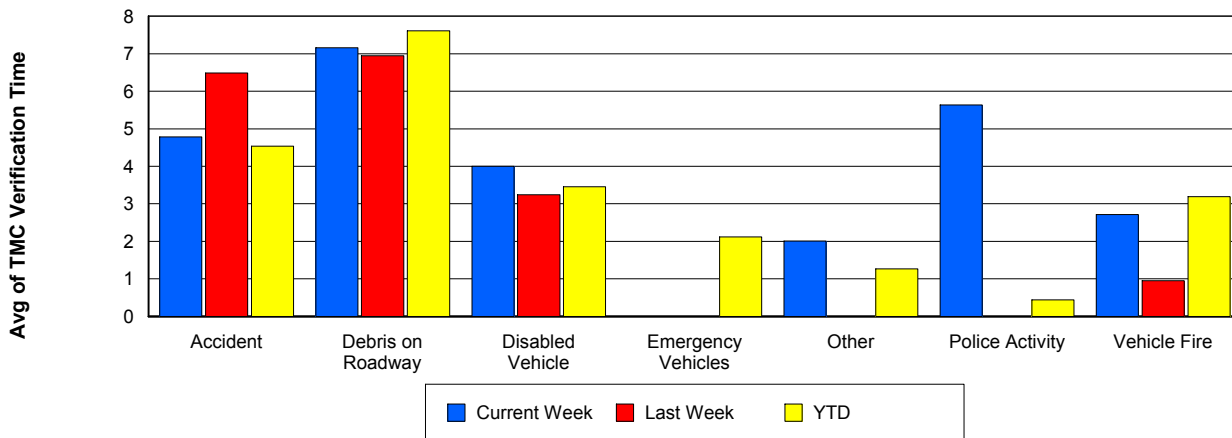
Number of Events / Event Type



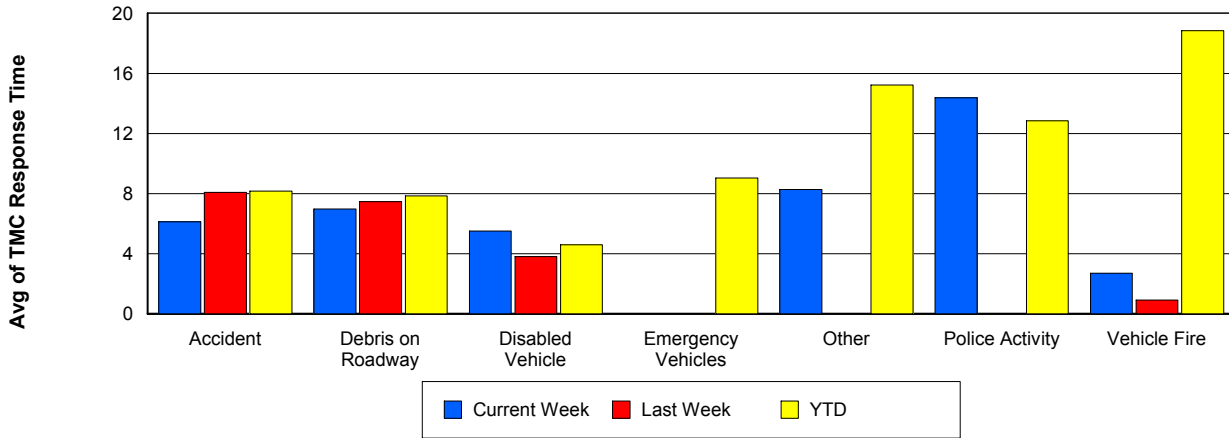
TMC Detection Time



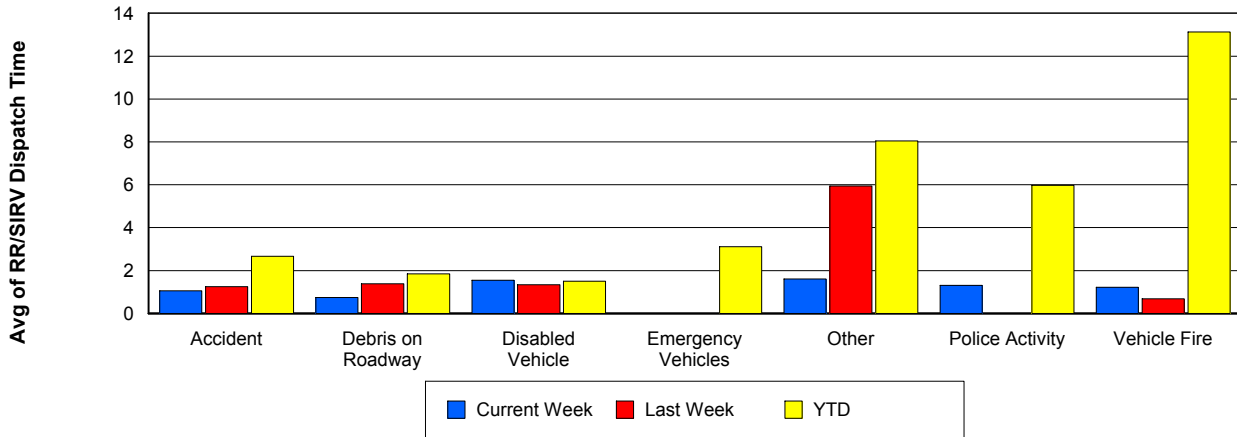
TMC Verification Time



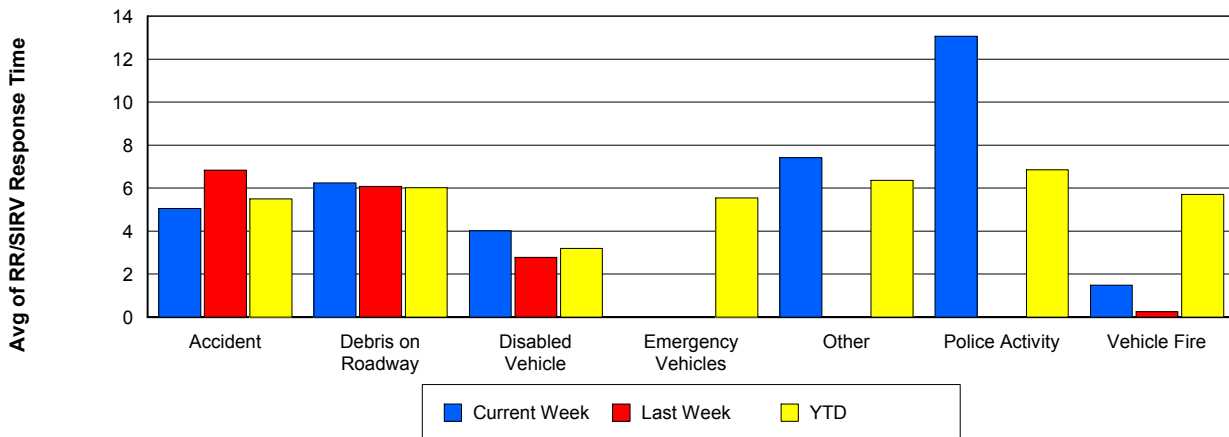
TMC Response Time



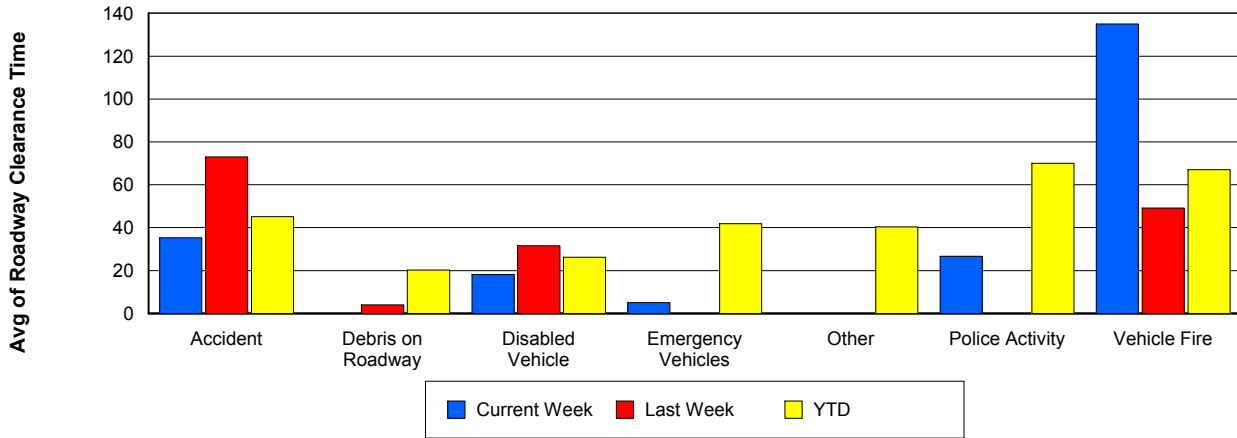
Road Ranger / SIRV Dispatch Time



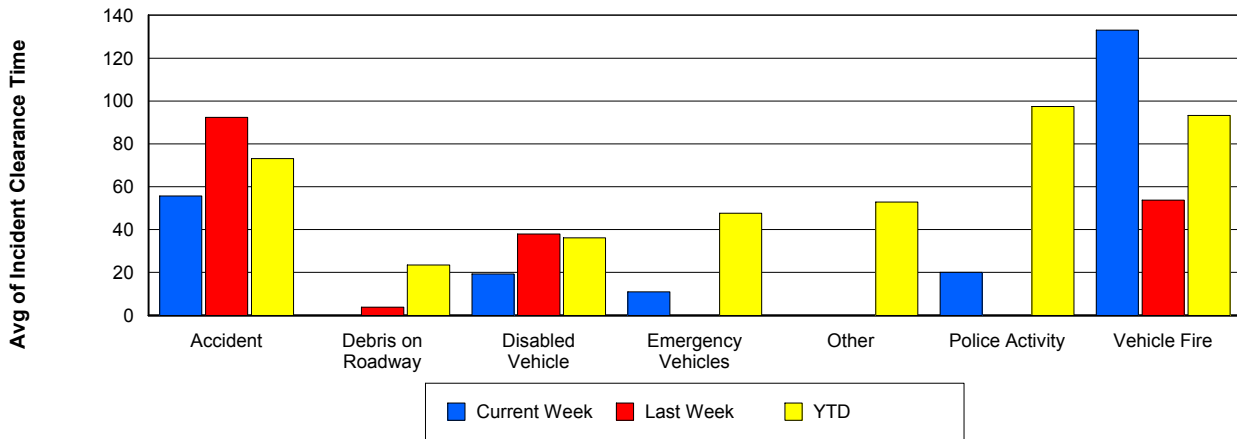
Road Ranger / SIRV Response Time



Roadway Clearance Time (2A)



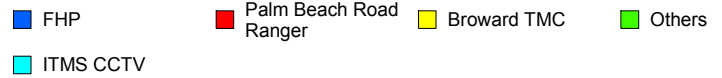
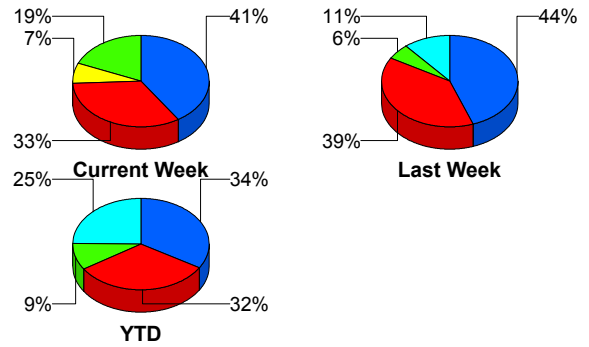
Incident Clearance Time (3B)



Incident Detection Methods

	Current Week	Last Week	YTD
Broward CCTV	1	0	8
Broward Road Ranger	1	0	8
Broward TMC	2	0	4
Broward VideoWall	0	0	1
Construction CEI	0	0	1
District 4	1	0	23
Emergency Operations	0	0	1
FHP	11	8	301
I-95 Construction PIO	0	0	3
ITMS	0	0	12
ITMS CCTV	2	2	222
Local Police	0	0	1
Media	0	0	2
Motorist	0	1	16
Palm Beach Road Ran	9	7	288
Road Watcher	0	0	1
SmarTraveler (511)	0	0	4
Total	27	18	896

Total Incidents by Detection Method

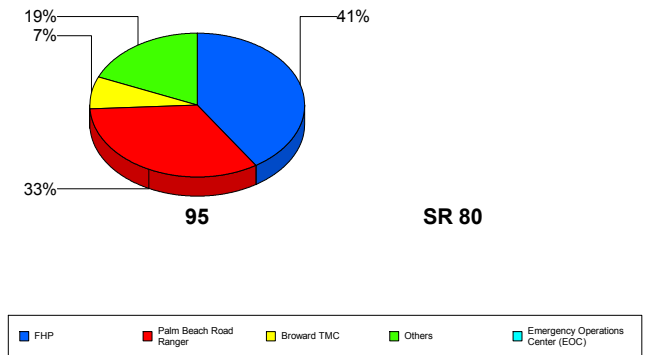


Incident Detection Methods by Roadway

		Current Week	Last Week	YTD
95	Broward CCTV	1	0	8
	Broward Road Ranger	1	0	8
	Broward TMC	2	0	4
	Broward VideoWall	0	0	1
	Construction CEI	0	0	1
	District 4	1	0	23
	FHP	11	8	300
	I-95 Construction PIO	0	0	3
	ITMS	0	0	11
	ITMS CCTV	2	2	222
	Local Police	0	0	1
	Media	0	0	2
	Motorist	0	1	16
	Palm Beach Road Ran	9	7	288
	Road Watcher	0	0	1
	SmarTraveler (511)	0	0	4
Total	27	18	893	
SR 80	Emergency Operations	0	0	1
	FHP	0	0	1
	ITMS	0	0	1
	Total	0	0	3
Total	27	18	896	

Total Events by Roadway and Detection Method

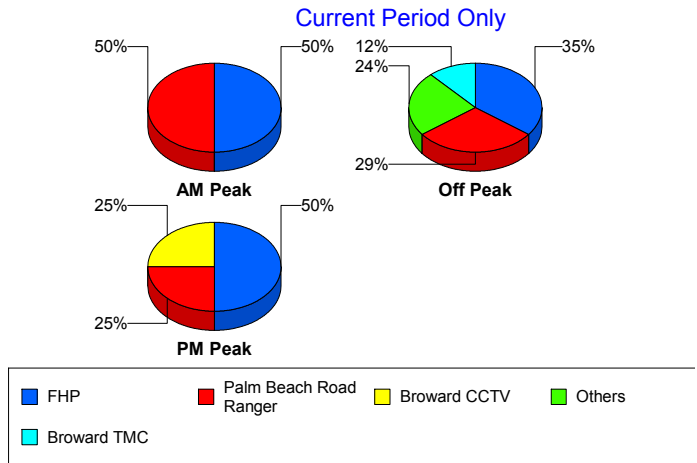
Current Period Only



Incident Detection Methods by Peak Period

		Current Week	Last Week	YTD
AM Peak	Broward CCTV	0	0	2
	Broward Road Ranger	0	0	3
	Broward TMC	0	0	2
	District 4	0	0	11
	FHP	3	2	92
	I-95 Construction PIO	0	0	1
	ITMS	0	0	5
	ITMS CCTV	0	2	39
	Motorist	0	1	7
	Palm Beach Road Ran	3	0	95
	Road Watcher	0	0	1
	SmarTraveler (511)	0	0	3
	Total	6	5	261
	Off Peak	Broward CCTV	0	0
Broward Road Ranger		1	0	2
Broward TMC		2	0	2
Broward VideoWall		0	0	1
Construction CEI		0	0	1
District 4		1	0	9
FHP		6	4	149
I-95 Construction PIO		0	0	2
ITMS		0	0	6
ITMS CCTV		2	0	118
Motorist		0	0	5
Palm Beach Road Ran		5	7	111
SmarTraveler (511)		0	0	1
Total		17	11	411
PM Peak	Broward CCTV	1	0	2
	Broward Road Ranger	0	0	3
	District 4	0	0	3
	Emergency Operations	0	0	1

Total Events by Peak Period and Detection Method

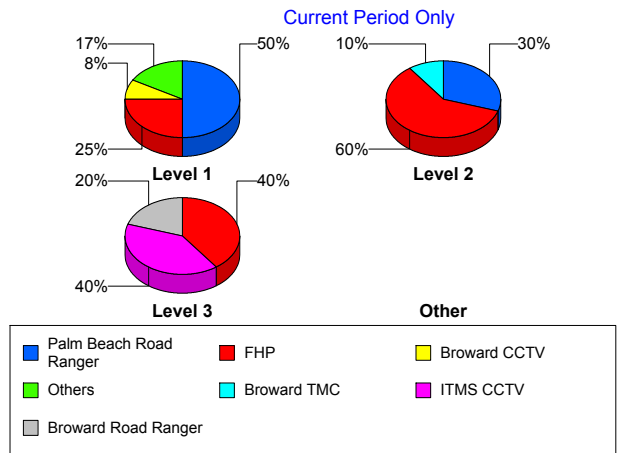


		Current Week	Last Week	YTD
PM Peak	FHP	2	2	60
	ITMS	0	0	1
	ITMS CCTV	0	0	65
	Local Police	0	0	1
	Media	0	0	2
	Motorist	0	0	4
	Palm Beach Road Ran	1	0	82
	Total	4	2	224
Total		27	18	896

Incident Detection Methods by Severity

		Current Week	Last Week	YTD
Level 1	Broward CCTV	1	0	6
	Broward Road Ranger	0	0	4
	Broward TMC	1	0	1
	District 4	1	0	16
	FHP	3	2	103
	I-95 Construction PIO	0	0	2
	ITMS	0	0	4
	ITMS CCTV	0	0	97
	Local Police	0	0	1
	Motorist	0	0	10
	Palm Beach Road Ran	6	4	201
	Road Watcher	0	0	1
	SmarTraveler (511)	0	0	1
	Total	12	6	447
	Level 2	Broward Road Ranger	0	0
Broward TMC		1	0	1
Broward VideoWall		0	0	1
District 4		0	0	6
FHP		6	3	151
I-95 Construction PIO		0	0	1

Total Events by Severity and Detection Method



		Current Week	Last Week	YTD
Level 2	ITMS	0	0	6
	ITMS CCTV	0	2	92
	Media	0	0	1
	Motorist	0	1	5
	Palm Beach Road Ran	3	1	72
	SmarTraveler (511)	0	0	3
	Total	10	7	342
Level 3	Broward CCTV	0	0	2
	Broward Road Ranger	1	0	1
	Broward TMC	0	0	2
	Construction CEI	0	0	1
	District 4	0	0	1
	Emergency Operations	0	0	1
	FHP	2	3	47
	ITMS	0	0	2
	ITMS CCTV	2	0	33
	Media	0	0	1
	Motorist	0	0	1
	Palm Beach Road Ran	0	2	15
	Total	5	5	107
Total		27	18	896

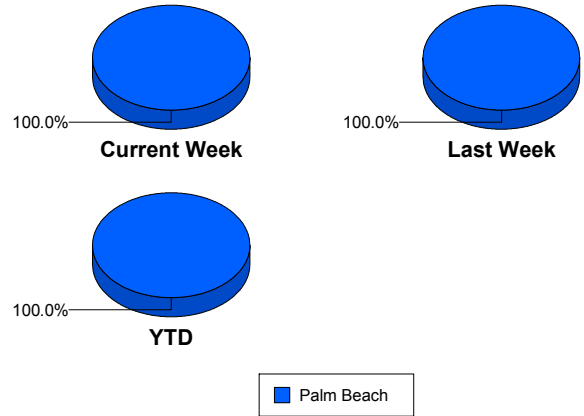
Road Ranger / SIRV Performance Measures

Road Ranger / SIRV Performance By County

RR/SIRV Responses per County

Values presented are: - Total Events with a RR/SIRV Response - Total RR/SIRV Responses, - Total Activities Performed

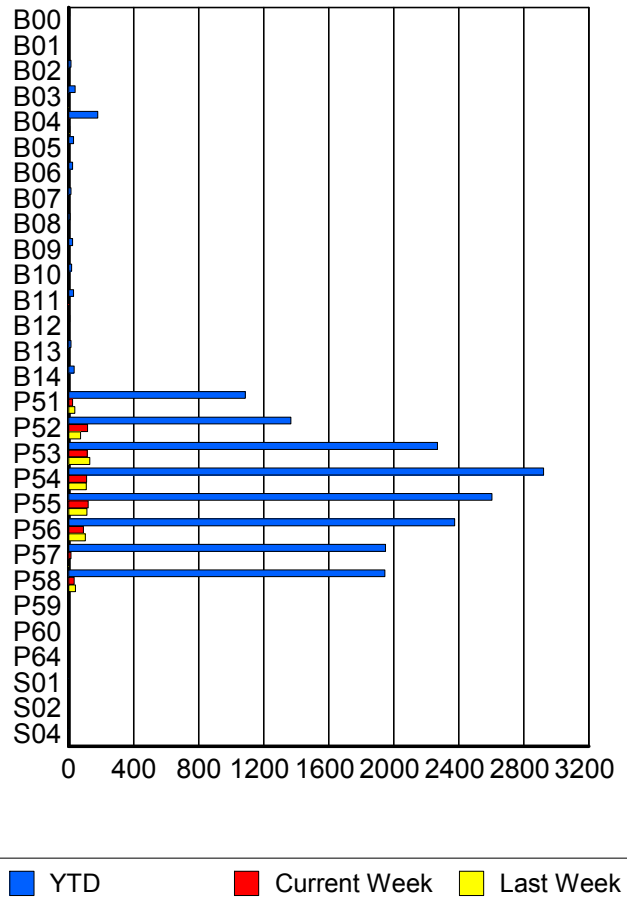
	Current We	Last Week	YTD
Palm Beach	608	603	16,379
	640	623	16,670
	684	659	18,144



Road Ranger / SIRV Performance By Truck

	Current We	Last Week	YTD
B00	0	0	6
	0	0	6
	0	0	6
B01	0	0	1
	0	0	1
	0	0	1
B02	1	0	14
	1	0	14
	1	0	15
B03	0	2	41
	0	2	41
	0	2	42
B04	5	6	178
	5	6	179
	5	6	203
B05	0	1	29
	0	1	30
	0	1	31
B06	0	0	24
	0	0	25
	0	0	27
B07	0	0	14
	0	0	14
	0	0	14
B08	1	0	9
	1	0	9
	2	0	11

**RR/SIRV
Responses per
Truck**



	Current We	Last Week	YTD
B09	1	0	24
	1	0	25
	2	0	26
B10	1	1	18
	1	1	19
	1	1	19
B11	2	0	30
	2	0	30
	2	0	31
B12	0	0	6
	0	0	6
	0	0	7
B13	0	0	14
	0	0	14
	0	0	15
B14	1	1	34
	1	1	35
	1	1	37
P51	24	38	1,078
	24	38	1,088
	24	39	1,136
P52	115	72	1,361
	116	73	1,367
	126	81	1,470
P53	113	130	2,239
	115	131	2,269
	123	132	2,398
P54	109	108	2,895
	110	109	2,923
	117	118	3,139
P55	120	110	2,585
	121	112	2,604
	129	123	2,792
P56	88	103	2,350
	91	103	2,376
	97	106	2,557
P57	15	3	1,930
	15	3	1,950
	15	4	2,082
P58	34	42	1,917
	35	43	1,946
	37	45	2,073
P59	1	0	1
	1	0	1
	2	0	2

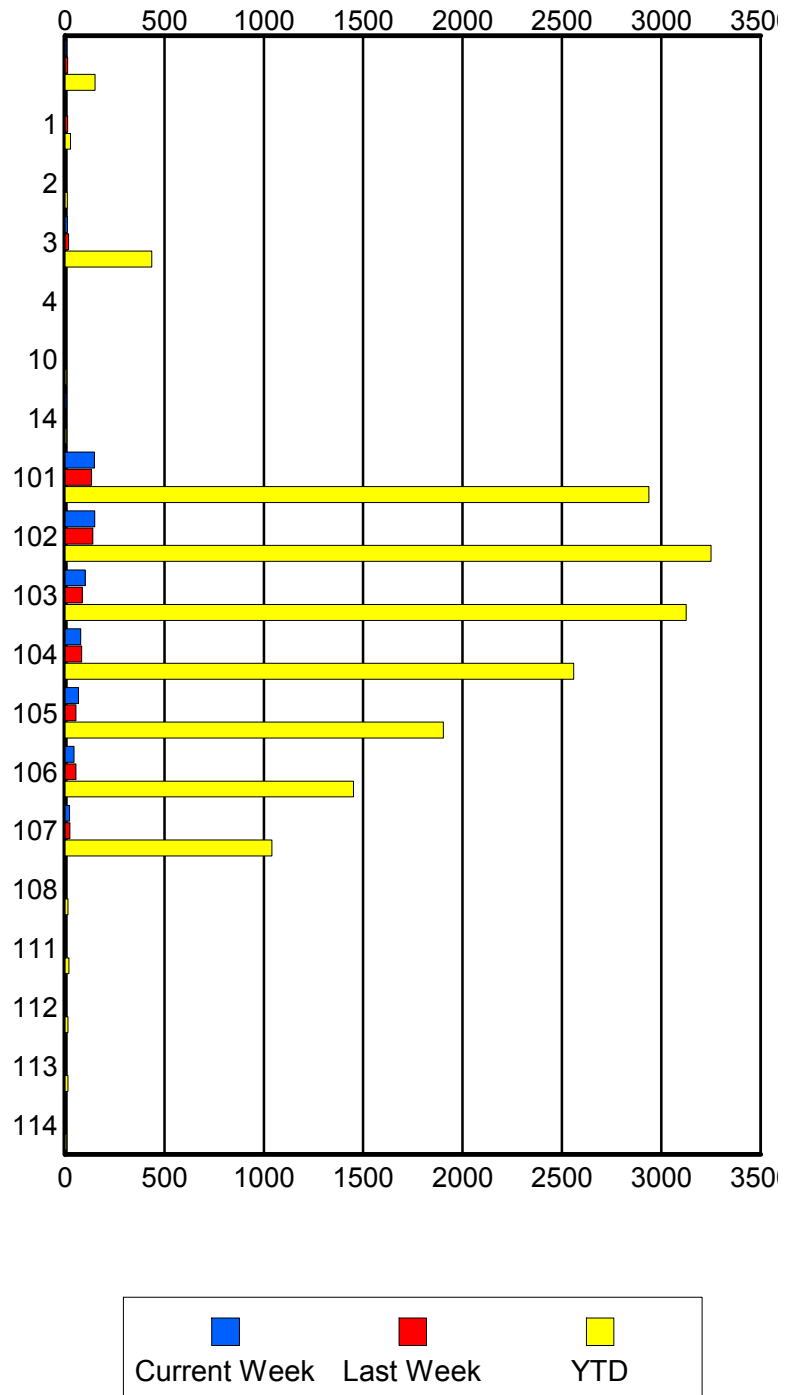
	Current We	Last Week	YTD
P60	0	0	1
	0	0	1
	0	0	1
P64	0	0	1
	0	0	1
	0	0	1
S01	0	0	3
	0	0	3
	0	0	3
S02	0	0	3
	0	0	3
	0	0	3
S04	0	0	2
	0	0	2
	0	0	2

Road Ranger / SIRV Performance By Beat

	Current We	Last Week	YTD
	7	13	150
	7	13	151
	8	13	156
1	0	12	26
	0	13	27
	0	13	28
2	0	3	11
	0	3	11
	0	4	13
3	11	17	424
	12	18	437
	14	19	473
4	0	0	2
	0	0	2
	0	0	2
10	0	0	6
	0	0	6
	0	0	9
14	7	0	7
	7	0	7
	7	0	7
101	143	131	2,906
	148	133	2,937
	157	142	3,154
102	148	137	3,219
	150	139	3,251
	159	151	3,459
103	100	86	3,092
	102	86	3,126
	113	89	3,366
104	75	84	2,530
	78	84	2,559
	84	87	2,740
105	68	54	1,888
	68	54	1,903
	73	57	2,026
106	45	54	1,433
	45	54	1,451
	46	57	1,550
107	23	23	1,028
	23	24	1,041
	23	25	1,091
108	0	0	13
	0	0	14
	0	0	14

Values presented are:
 - Total Events with a RR/SIRV Response
 - Total RR/SIRV Responses,
 - Total Activities Performed

RR/SIRV Responses per Beat



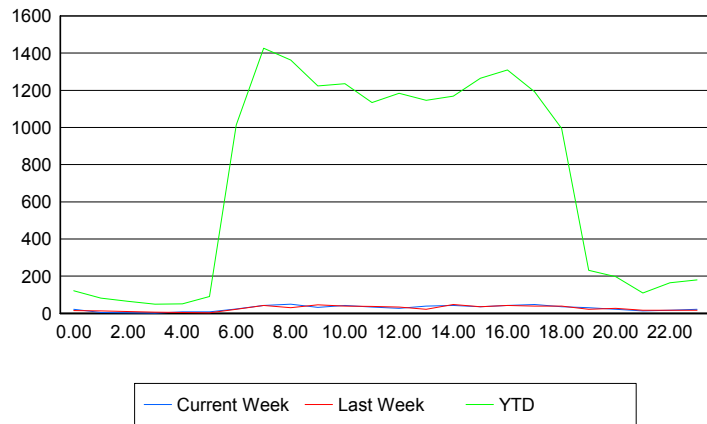
	Current We	Last Week	YTD
111	0	1	18
	0	1	19
	0	1	20
112	0	0	14
	0	0	15
	0	0	16
113	0	1	13
	0	1	14
	0	1	14
114	0	0	6
	0	0	6
	0	0	6

Road Ranger / SIRV Performance By Time of Day

Values presented are:
- Total Events with a RR/SIRV Response
- Total RR/SIRV Responses,
- Total Activities Performed

	Current We	Last Week	YTD
12AM-1AM	20	15	116
	21	15	121
	25	18	131
1AM-2AM	4	12	78
	4	13	82
	4	16	87
2AM-3AM	2	9	63
	2	9	65
	2	9	69
3AM-4AM	1	7	47
	1	7	50
	1	7	51
4AM-5AM	8	3	46
	8	5	51
	9	6	57
5AM-6AM	6	2	83
	8	2	90
	8	2	94
6AM-7AM	22	21	970
	23	22	1,013
	24	23	1,065
7AM-8AM	40	41	1,358
	43	43	1,427
	44	46	1,531
8AM-9AM	47	30	1,303
	49	31	1,362
	50	33	1,455

Number of Responses / Hour of the Day



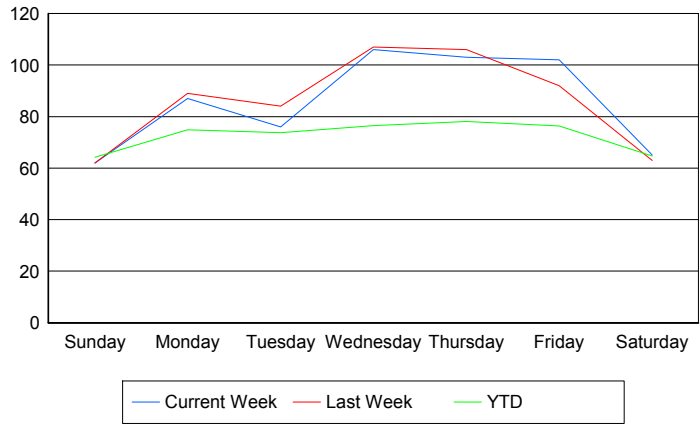
	Current We	Last Week	YTD
9AM-10AM	31	46	1,183
	32	46	1,224
	34	47	1,330
10AM-11AM	40	35	1,191
	42	39	1,235
	45	43	1,306
11AM-12PM	31	36	1,102
	33	37	1,135
	34	39	1,233
12PM-1PM	26	32	1,136
	27	33	1,184
	28	34	1,268
1PM-2PM	36	22	1,109
	38	22	1,146
	40	22	1,231
2PM-3PM	40	46	1,121
	43	47	1,168
	48	52	1,240
3PM-4PM	34	36	1,220
	35	36	1,265
	36	36	1,346
4PM-5PM	40	43	1,272
	43	43	1,309
	49	43	1,394
5PM-6PM	45	38	1,156
	48	38	1,192
	50	43	1,263
6PM-7PM	35	37	982
	36	38	995
	40	39	1,052
7PM-8PM	30	21	225
	31	22	232
	33	23	245
8PM-9PM	21	27	189
	22	27	197
	22	27	205
9PM-10PM	12	13	101
	13	16	110
	13	18	117
10PM-11PM	16	16	153
	16	16	164
	21	16	179
11PM-12AM	21	15	175
	22	16	179
	24	17	195

Road Ranger / SIRV Performance By Day of Week

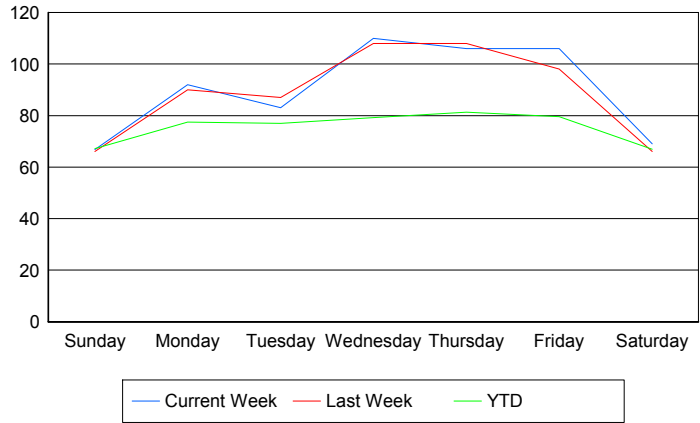
Values presented are:
 - Total Events with a RR/SIRV Response
 - Total RR/SIRV Responses,
 - Total Activities Performed

	Current We	Last Week	YTD
Sunday	69 74 81	62 66 72	456 476 512
Monday	87 92 100	89 90 95	3,015 3,089 3,298
Tuesday	76 83 90	84 87 94	2,972 3,080 3,298
Wednesday	106 110 115	107 108 112	3,107 3,218 3,444
Thursday	103 106 110	106 108 115	3,179 3,266 3,540
Friday	102 106 115	92 98 101	3,149 3,271 3,488
Saturday	65 69 73	63 66 70	517 534 564

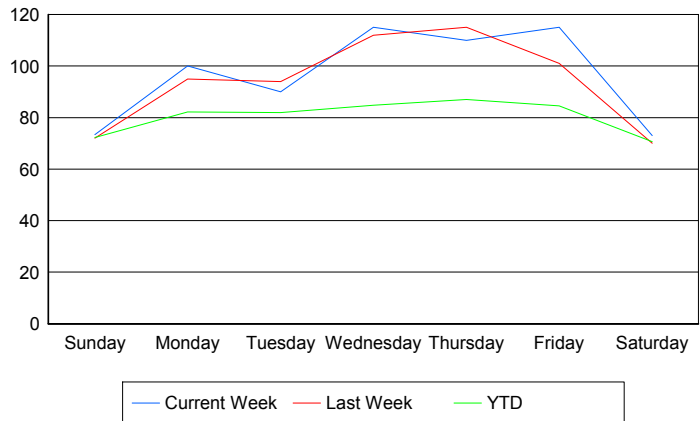
Avg # of events with a RR/SIRV Response per Day of the Week



Avg # of RR/SIRV Responses per Day of the Week



Avg # of RR/SIRV Activities Performed per Day of the Week



Road Ranger / SIRV Responses per Time of Day and Day of Week

