



Weekly Performance Measures Report Palm Beach County



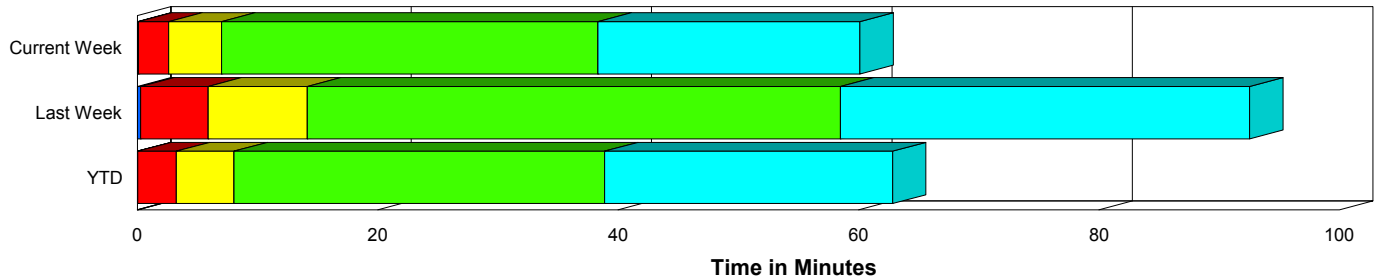
Created on:
September 14, 2009
8:44 am

Period From Sep 6, 2009 to Sep 12, 2009

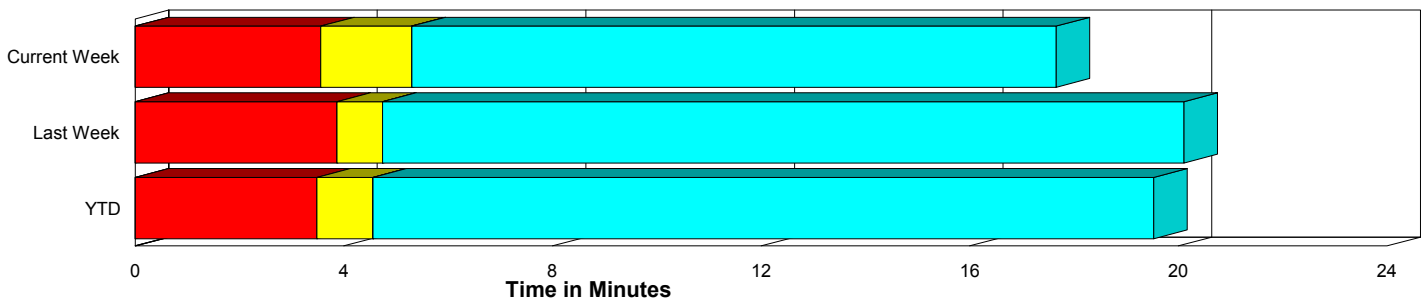
Performance Measures Summary

	Traffic Events (No Lanes Blocked)			Incidents (Lanes Blocked)		
	<u>This Week</u>	<u>Last Week</u>	<u>YTD</u>	<u>This Week</u>	<u>Last Week</u>	<u>YTD</u>
Number of Events	439	424	10,836	26	23	756
TMC Detection (min.)	0.00	0.00	0.00	0.08	0.29	0.03
TMC Verification (min.)	3.56	3.87	3.49	2.53	5.60	3.22
TMC Response (min.)	5.40	5.16	5.23	7.12	14.09	8.70
RR Dispatch Time (min.)	1.23	1.79	1.73	1.45	4.81	4.15
RR Response Time (min.)	4.46	3.46	3.60	5.68	9.12	4.53
Roadway Clearance (min.)				36.69	64.85	49.66
Event Clearance (min.)	17.75	20.52	20.20	58.46	98.78	73.25
# of Events w/ RR/SIRV	432	394	9,171	24	19	576
RR/SIRV Responses	432	394	9,171	24	19	576
RR/SIRV Activities	463	423	9,973	35	25	838

Incident Clearance Time-Line



Traffic Event (Non-Lane Blockage) Time-Line



<ul style="list-style-type: none"> Avg. TMC Detection Time Avg. Time from TMC Detection to TMC Verification Avg. Time from TMC Verification to TMC Response 	<ul style="list-style-type: none"> Avg. Time from TMC Response to Roadway Clearance* Avg. Time from Roadway Clearance to Incident/Event Clearance**
--	--

* Roadway clearance equals all travel lanes open

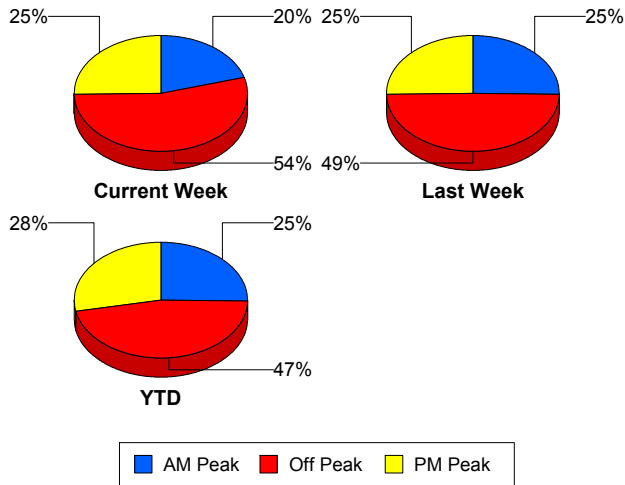
** Incident clearance equals time when last responder has left the scene

Performance Measures by Peak Period

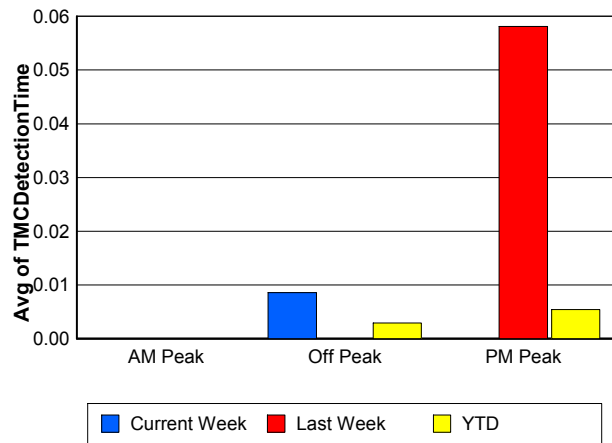
Note: AM peak period is defined as 6am to 10am and PM peak period is defined as 3pm to 7pm.

	AM Peak			Off Peak			PM Peak		
	<u>Current Week</u>	<u>Last Week</u>	<u>YTD</u>	<u>Current Week</u>	<u>Last Week</u>	<u>YTD</u>	<u>Current Week</u>	<u>Last Week</u>	<u>YTD</u>
Number of Events	95	113	2,916	253	221	5,421	117	113	3,255
Number of Incidents	5	5	222	17	13	336	4	5	198
TMC Detection (min.)	0.00	0.00	0.00	0.01	0.00	0.00	0.00	0.06	0.01
TMC Verification (min.)	3.07	2.80	3.02	3.62	4.71	3.14	3.59	3.65	4.41
TMC Response (min.)	6.66	7.10	4.37	5.90	5.75	6.35	3.79	3.86	5.24
RR Dispatch Time (min.)	1.01	2.83	1.17	1.43	1.45	2.74	1.00	1.97	1.39
RR Response Time (min.)	5.72	4.42	3.24	4.92	4.35	3.78	2.82	1.89	3.87
Event Clearance (min.)	24.61	30.13	22.36	20.77	23.39	25.69	14.71	21.25	21.45
Roadway Clearance (min.)	20.13	71.70	39.38	45.94	69.33	51.05	18.08	46.34	58.83
Incident Clearance (min.)	70.80	133.35	66.96	62.03	80.99	73.91	27.85	110.47	79.18
# of Events w/ RR/SIRV	92	103	2,777	247	202	3,926	117	108	3,044
RR/SIRV Responses	92	103	2,777	247	202	3,926	117	108	3,044
RR/SIRV Activities	99	108	3,144	271	227	4,355	128	113	3,312

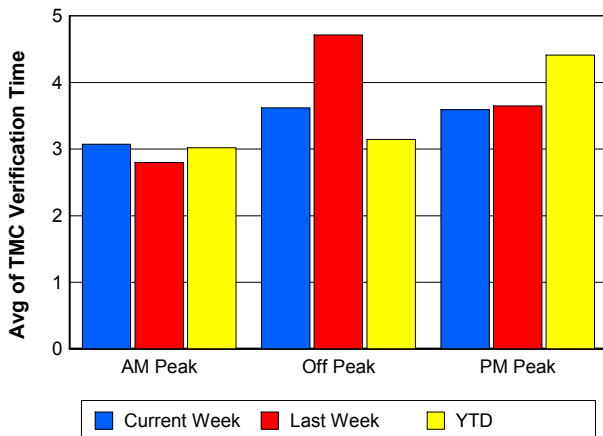
Number of Events / Peak Period



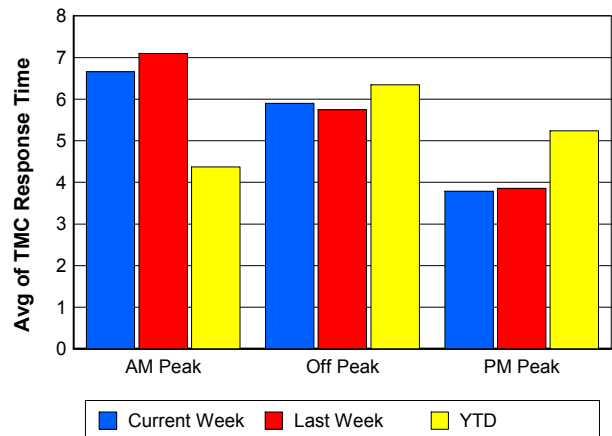
TMC Detection Time



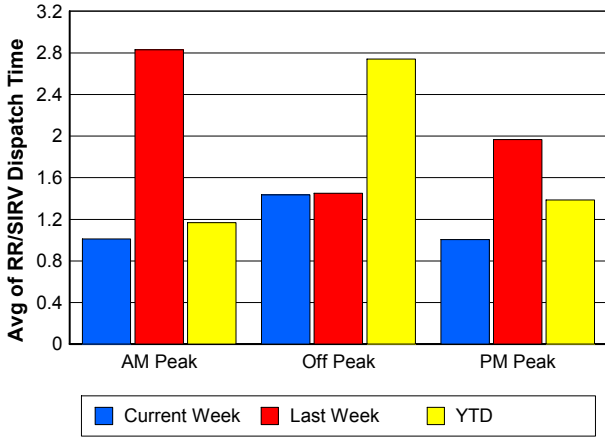
TMC Verification Time



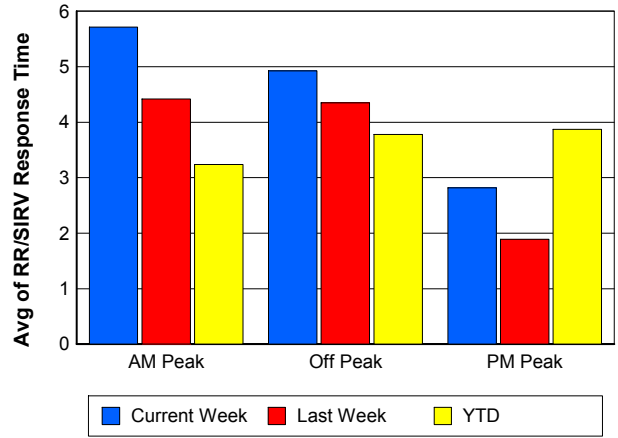
TMC Response Time



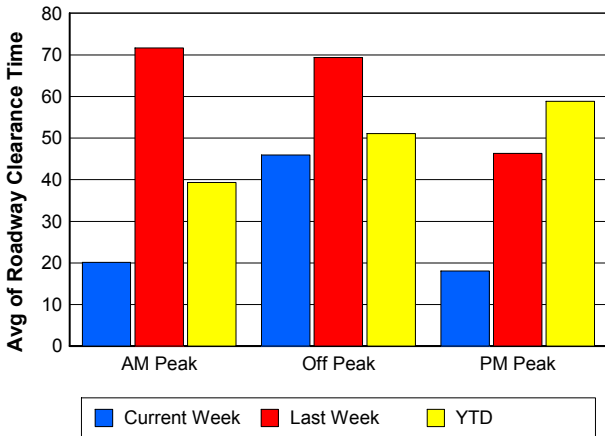
Road Ranger / SIRV Dispatch Time



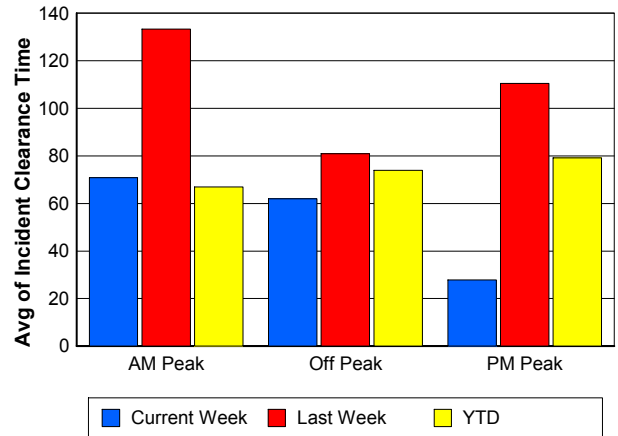
Road Ranger / SIRV Response Time



Roadway Clearance Time (2A)



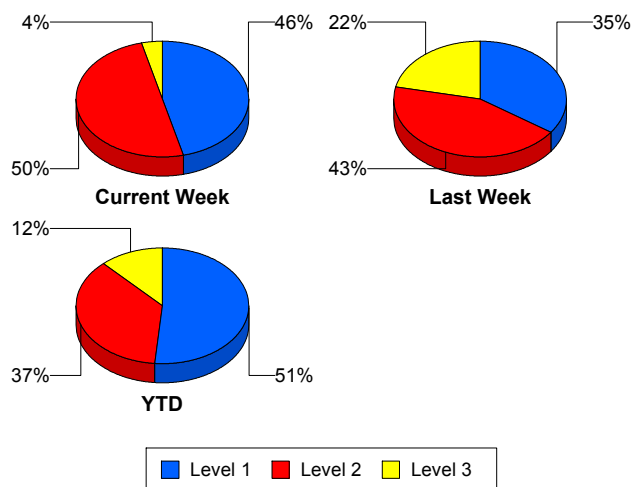
Incident Clearance Time (3B)



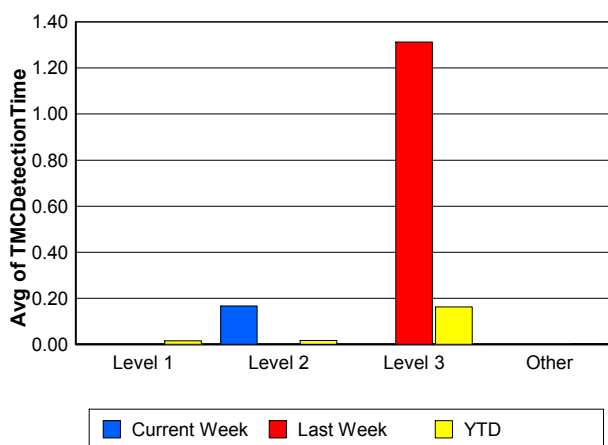
Performance Measures by Severity

	Level 1			Level 2			Level 3			Other		
	<u>This Week</u>	<u>Last Week</u>	<u>YTD</u>	<u>This Week</u>	<u>Last Week</u>	<u>YTD</u>	<u>This Week</u>	<u>Last Week</u>	<u>YTD</u>	<u>This Week</u>	<u>Last Week</u>	<u>YTD</u>
Number of Events	12	8	388	13	10	277	1	5	91	439	424	10,836
Number of Incidents	12	8	388	13	10	277	1	5	91	0	0	0
TMC Detection (min.)	0.00	0.00	0.02	0.17	0.00	0.02	0.00	1.31	0.16	0.00	0.00	0.00
TMC Verification (min.)	1.66	5.84	2.16	3.52	4.69	4.32	0.00	7.03	4.47	3.56	3.87	3.49
TMC Response (min.)	5.10	12.12	4.30	9.23	3.68	8.60	0.00	35.78	34.48	5.40	5.16	5.23
RR Dispatch Time (min.)	2.16	1.91	1.17	1.00	1.26	2.80	0.00	16.81	26.47	1.23	1.79	1.73
RR Resp. Time (min.)	2.94	10.19	3.14	8.23	2.42	5.80	0.00	18.97	8.01	4.46	3.46	3.60
Event Clearance (min.)	46.42	76.30	41.96	69.83	83.61	73.53	55.05	165.10	205.81	17.75	20.52	20.20
Roadway Clear. (min.)	14.30	17.09	14.69	59.45	53.85	54.06	9.48	163.24	185.35			
Incident Clearance (min.)	46.42	76.30	41.96	69.83	83.61	73.53	55.05	165.10	205.81			
# of Events w/ RR/SIRV	10	8	323	13	7	198	1	4	55	432	394	9,171
RR/SIRV Responses	10	8	323	13	7	198	1	4	55	432	394	9,171
RR/SIRV Activities	14	7	413	20	11	332	1	7	93	463	423	9,973

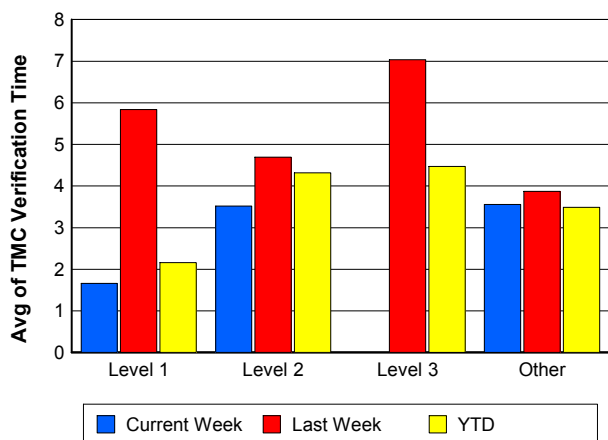
Number of Events / Severity



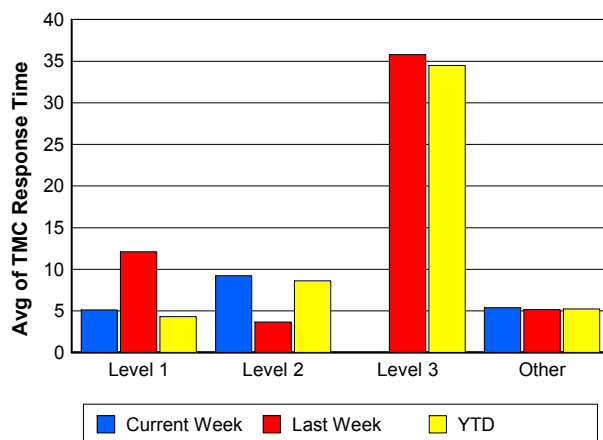
TMC Detection Time



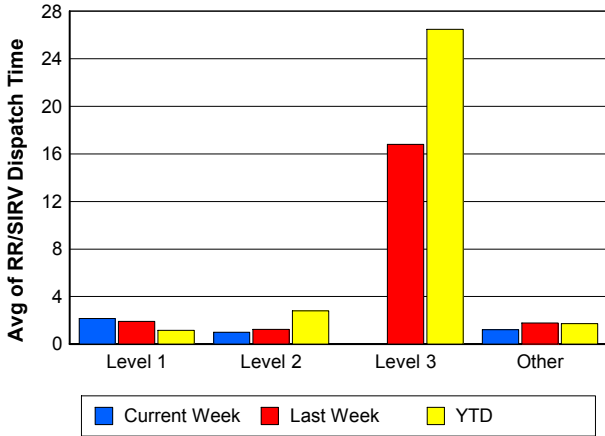
TMC Verification Time



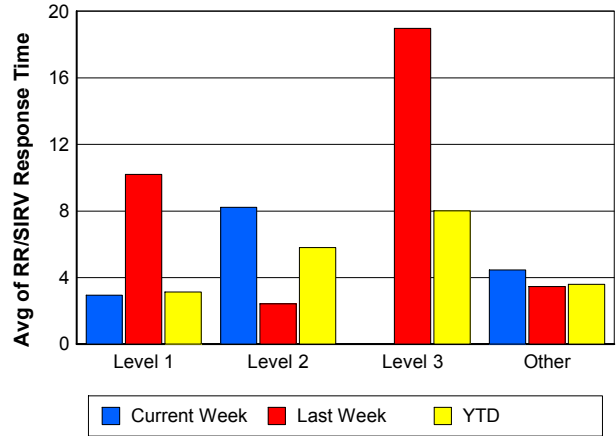
TMC Response Time



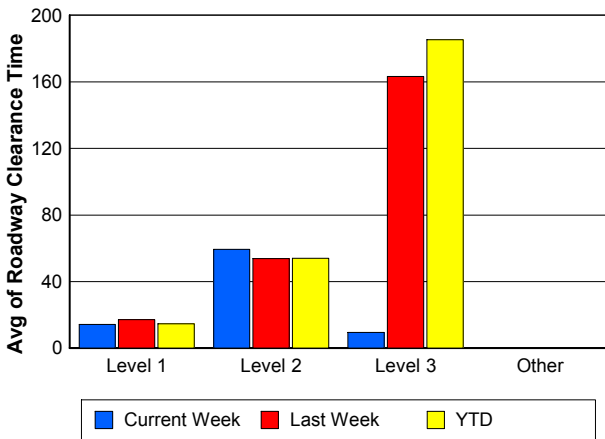
Road Ranger / SIRV Dispatch Time



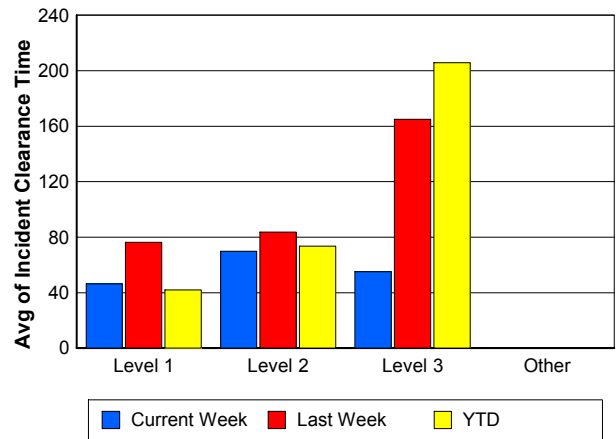
Road Ranger / SIRV Response Time



Roadway Clearance Time (2A)



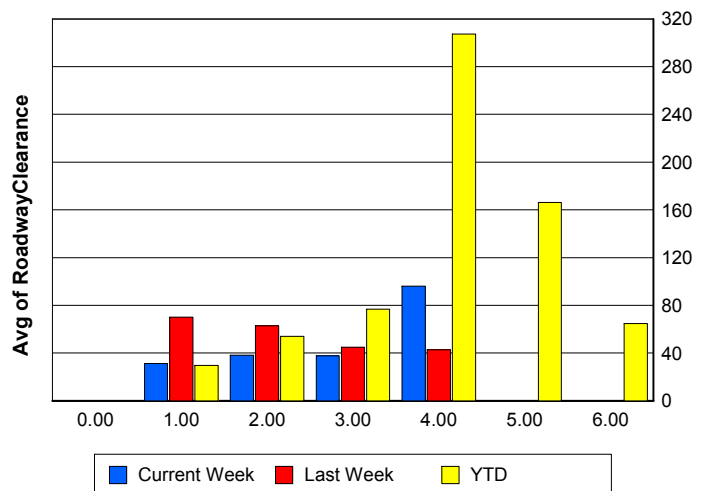
Incident Clearance Time (3B)



Roadway Clearance by Maximum Number of Lanes Blocked

	Current Week	Last Week	YTD
0			
1	31.30	70.17	29.71
2	38.31	62.76	53.95
3	37.70	44.92	76.90
4	96.12	42.63	307.29
5	0.00	0.00	166.12
6	0.00	0.00	64.70

Roadway Clearance Time (2A)



Performance Measures by Roadway

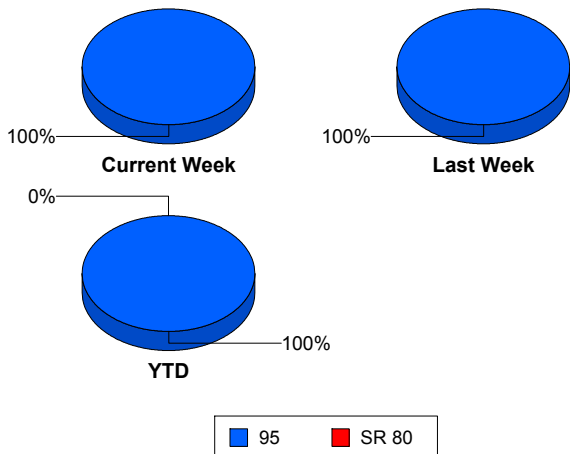
95

	<u>Current Week</u>	<u>Last Week</u>	<u>YTD</u>
Number of Events	465	447	11,588
Number of Incidents	26	23	753
TMC Detection (min.)	0.00	0.01	0.00
TMC Verification (min.)	3.50	3.96	3.47
TMC Response (min.)	5.50	5.56	5.44
RR Dispatch Time (min.)	1.24	1.93	1.87
RR Resp. Time (min.)	4.53	3.71	3.66
Event Clearance (min.)	20.03	24.55	23.18
Roadway Clear. (min.)	36.69	64.85	42.73
Incident Clearance (min.)	58.46	98.78	66.18
# of Events w/ RR/SIRV	456	413	9,747
RR/SIRV Responses	456	413	9,747
RR/SIRV Activities	498	448	10,811

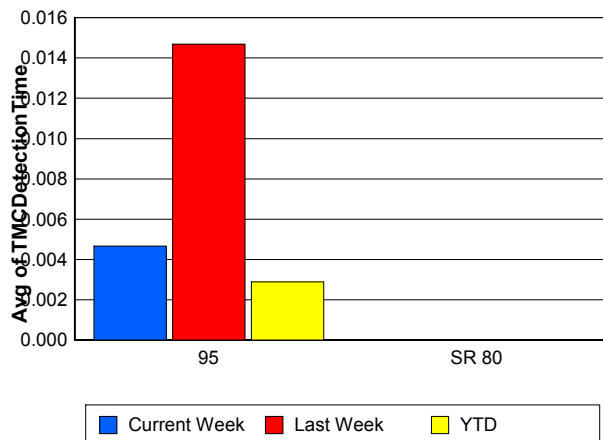
SR 80

	<u>YTD</u>
Number of Events	4
Number of Incidents	3
TMC Detection (min.)	0.00
TMC Verification (min.)	0.00
TMC Response (min.)	
RR Dispatch Time (min.)	
RR Resp. Time (min.)	
Event Clearance (min.)	1,409.98
Roadway Clear. (min.)	1,789.50
Incident Clearance (min.)	1,847.09
# of Events w/ RR/SIRV	0
RR/SIRV Responses	0
RR/SIRV Activities	0

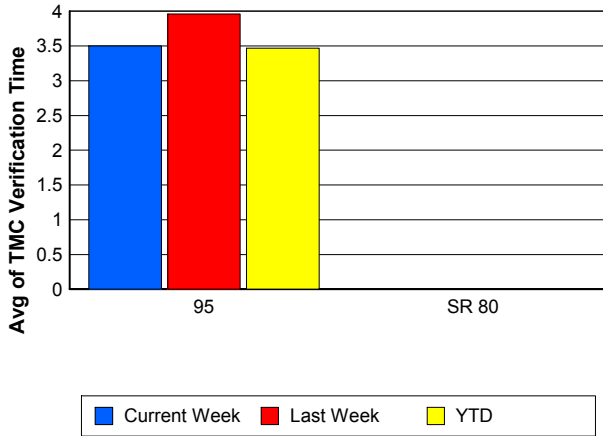
Number of Events / Roadway



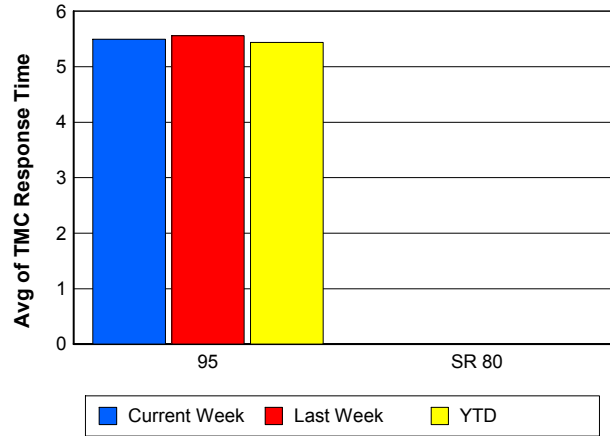
TMC Detection Time



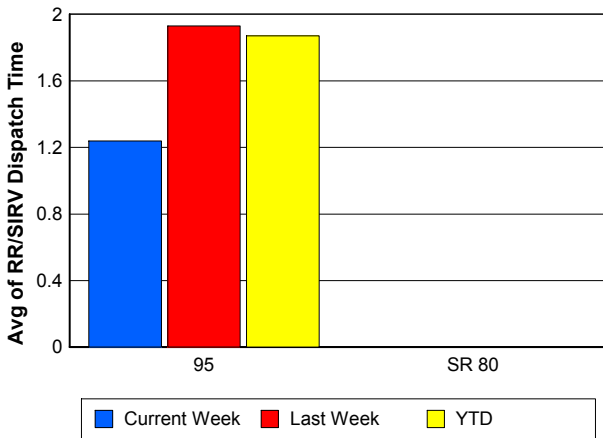
TMC Verification Time



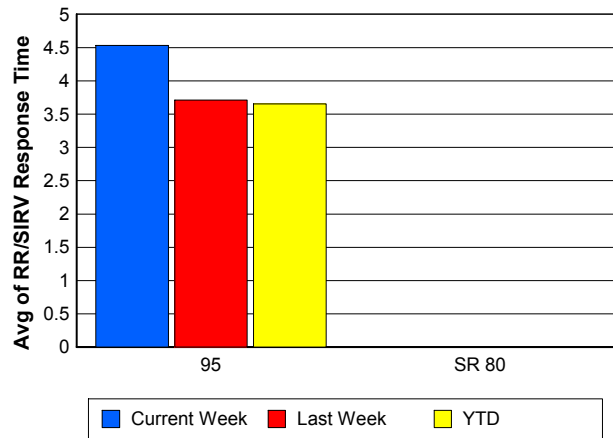
TMC Response Time



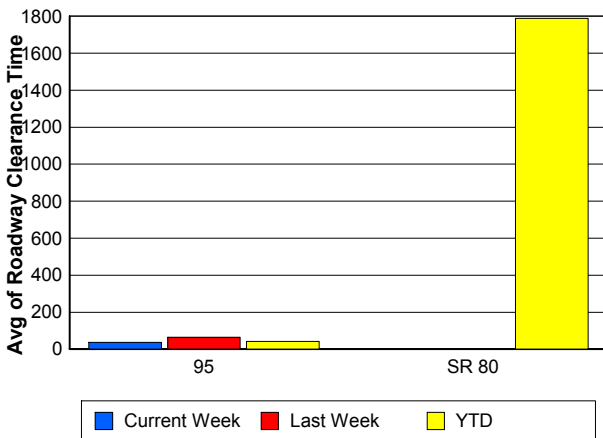
Road Ranger / SIRV Dispatch Time



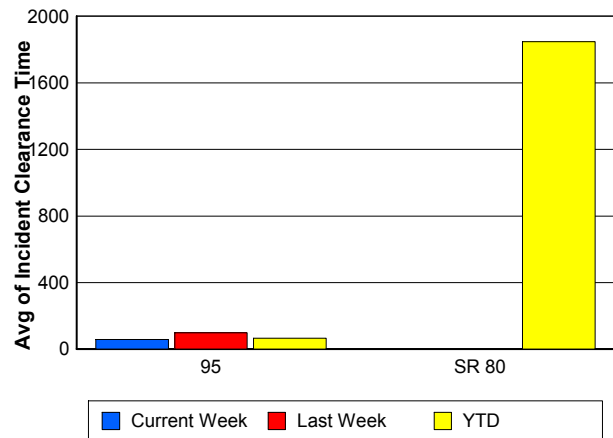
Road Ranger / SIRV Response Time



Roadway Clearance Time (2A)



Incident Clearance Time (3B)



Performance Measures by Event Type

Accident

	<u>Current Week</u>	<u>Last Week</u>	<u>YTD</u>
Number of Events	35	38	1,022
Number of Incidents	17	16	503
TMC Detection (min.)	0.06	0.00	0.01
TMC Verification (min.)	4.55	5.78	3.92
TMC Response (min.)	8.29	7.05	7.98
RR Dispatch Time (min.)	1.15	1.37	2.91
RR Response Time (min.)	7.13	5.68	5.06
Event Clearance (min.)	52.92	63.13	59.25
Roadway Clearance (min.)	37.71	53.34	45.29
Incident Clearance (min.)	66.90	87.99	73.42
# of Events w/ RR/SIRV	34	32	796
RR/SIRV Assists	34	32	796
RR/SIRV Activities	40	35	1,009

Debris on Roadway

	<u>Current Week</u>	<u>Last Week</u>	<u>YTD</u>
Number of Events	21	23	843
Number of Incidents	0	0	31
TMC Detection (min.)	0.00	0.00	0.00
TMC Verification (min.)	6.12	9.92	7.69
TMC Response (min.)	5.63	9.91	7.97
RR Dispatch Time (min.)	1.25	5.86	1.78
RR Response Time (min.)	4.65	4.05	6.19
Event Clearance (min.)	9.44	18.47	12.04
Roadway Clearance (min.)			21.08
Incident Clearance (min.)			23.69
# of Events w/ RR/SIRV	21	23	829
RR/SIRV Assists	21	23	829
RR/SIRV Activities	20	28	890

Disabled Vehicle

	<u>Current Week</u>	<u>Last Week</u>	<u>YTD</u>
Number of Events	392	366	8,509
Number of Incidents	7	4	148
TMC Detection (min.)	0.00	0.00	0.00
TMC Verification (min.)	3.40	3.53	3.34
TMC Response (min.)	5.31	4.81	4.55
RR Dispatch Time (min.)	1.03	1.59	1.51
RR Response Time (min.)	4.35	3.33	3.15
Event Clearance (min.)	17.66	20.49	18.24
Roadway Clearance (min.)	32.22	76.15	26.60
Incident Clearance (min.)	37.43	129.88	37.80
# of Events w/ RR/SIRV	391	343	7,790
RR/SIRV Assists	391	343	7,790
RR/SIRV Activities	429	369	8,589

Emergency Vehicles

	<u>YTD</u>
Number of Events	14
Number of Incidents	8
TMC Detection (min.)	0.00
TMC Verification (min.)	2.27
TMC Response (min.)	9.04
RR Dispatch Time (min.)	3.11
RR Response Time (min.)	5.54
Event Clearance (min.)	50.12
Roadway Clearance (min.)	46.52
Incident Clearance (min.)	52.24
# of Events w/ RR/SIRV	7
RR/SIRV Assists	7
RR/SIRV Activities	9

Other

	<u>Current Week</u>	<u>Last Week</u>	<u>YTD</u>
Number of Events	14	16	778
Number of Incidents	0	0	7
TMC Detection (min.)	0.00	0.00	0.00
TMC Verification (min.)	0.00	0.00	1.26
TMC Response (min.)	0.00	3.99	17.51
RR Dispatch Time (min.)	11.86	0.60	9.33
RR Response Time (min.)	0.00	3.41	7.03
Event Clearance (min.)	10.15	15.08	38.25
Roadway Clearance (min.)			40.35
Incident Clearance (min.)			52.93
# of Events w/ RR/SIRV	8	11	225
RR/SIRV Assists	8	11	225
RR/SIRV Activities	5	10	198

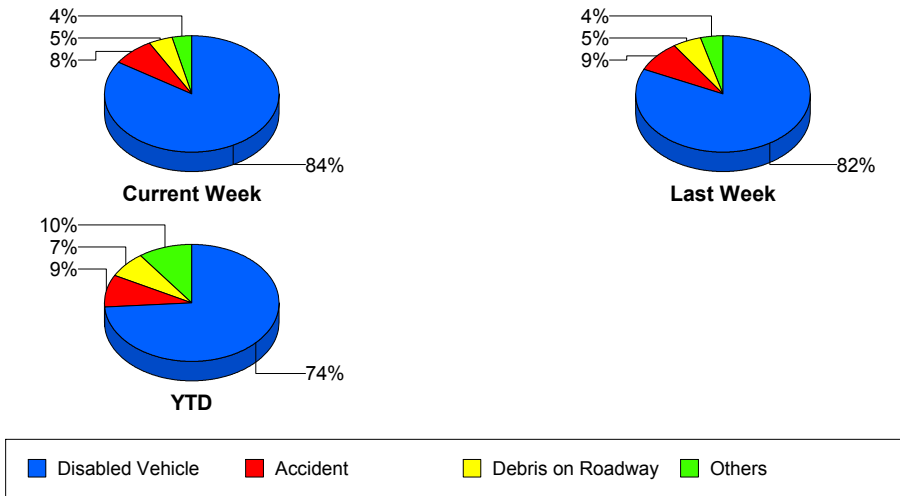
Police Activity

	<u>Current Week</u>	<u>Last Week</u>	<u>YTD</u>
Number of Events	2	3	328
Number of Incidents	1	3	36
TMC Detection (min.)	0.00	2.19	0.06
TMC Verification (min.)	5.66	2.19	0.35
TMC Response (min.)	11.30	38.18	13.59
RR Dispatch Time (min.)	0.93	22.19	7.35
RR Response Time (min.)	10.37	15.99	6.24
Event Clearance (min.)	59.81	114.89	27.65
Roadway Clearance (min.)	10.72	111.14	73.55
Incident Clearance (min.)	41.57	114.89	104.21
# of Events w/ RR/SIRV	1	3	30
RR/SIRV Assists	1	3	30
RR/SIRV Activities	2	4	35

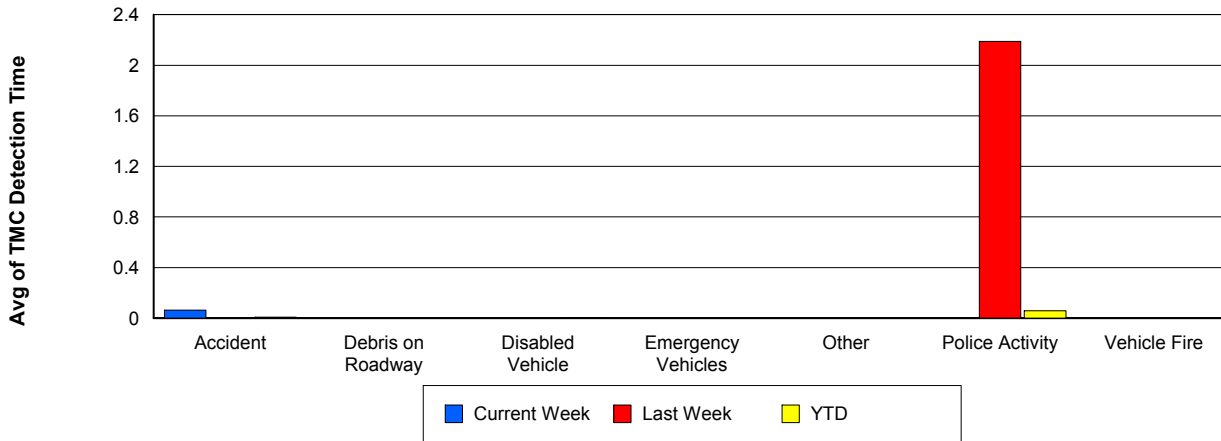
Vehicle Fire

	<u>Current Week</u>	<u>YTD</u>
Number of Events	1	29
Number of Incidents	1	22
TMC Detection (min.)	0.00	0.00
TMC Verification (min.)	0.00	2.58
TMC Response (min.)	0.00	23.83
RR Dispatch Time (min.)	0.00	17.98
RR Response Time (min.)	0.00	5.85
Event Clearance (min.)	78.97	88.14
Roadway Clearance (min.)	76.65	71.56
Incident Clearance (min.)	78.97	103.56
# of Events w/ RR/SIRV	1	16
RR/SIRV Assists	1	16
RR/SIRV Activities	2	25

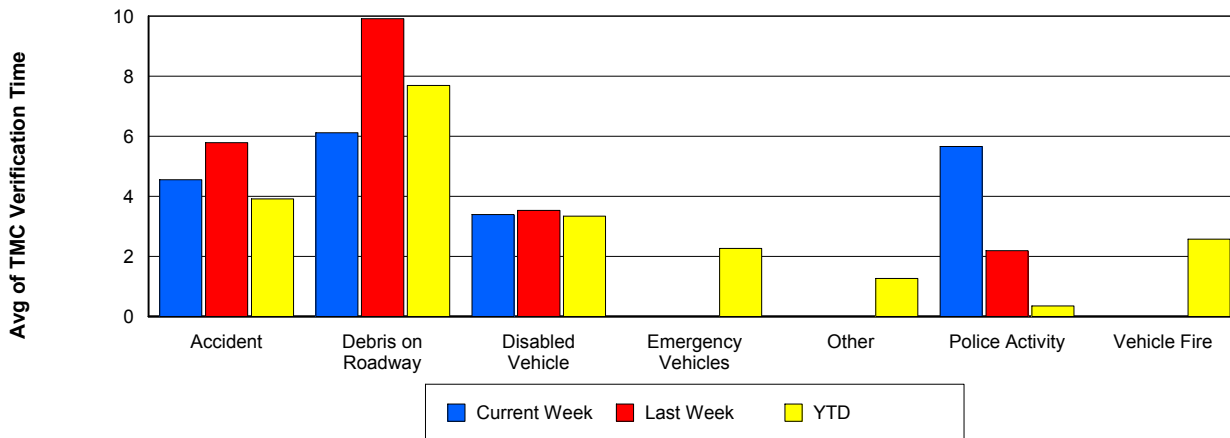
Number of Events / Event Type



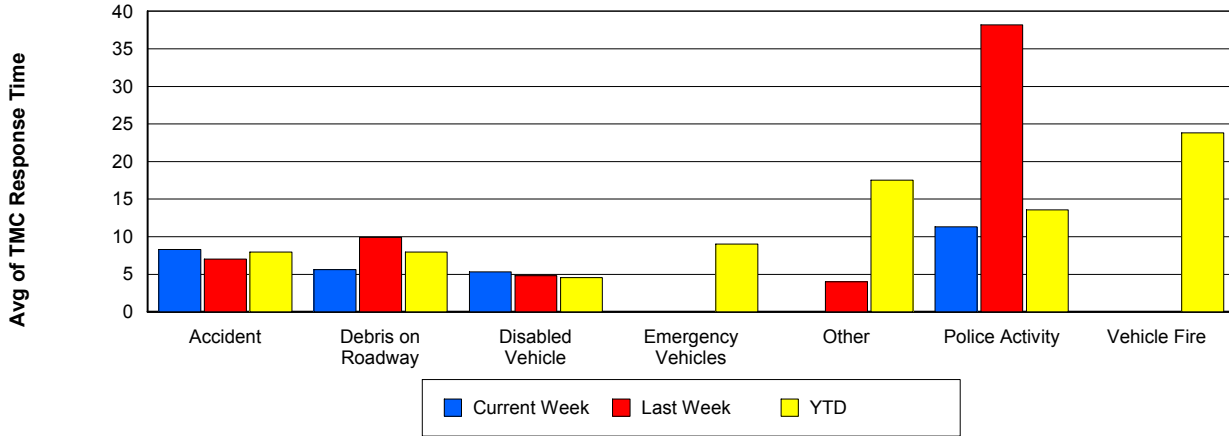
TMC Detection Time



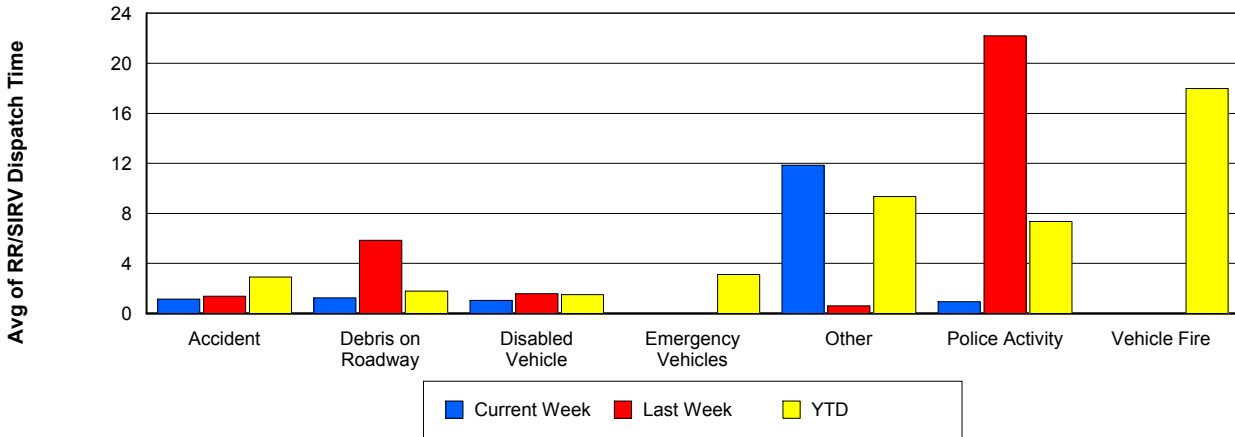
TMC Verification Time



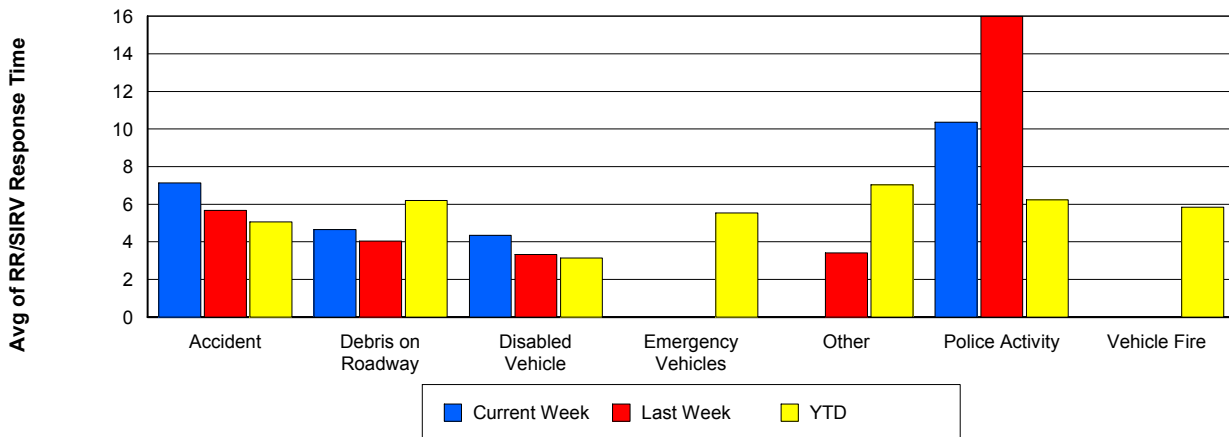
TMC Response Time



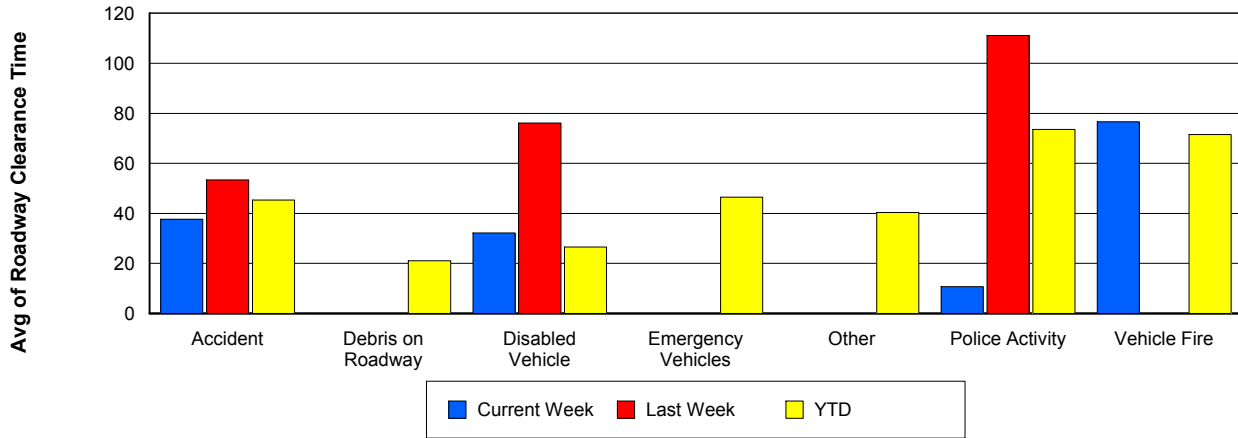
Road Ranger / SIRV Dispatch Time



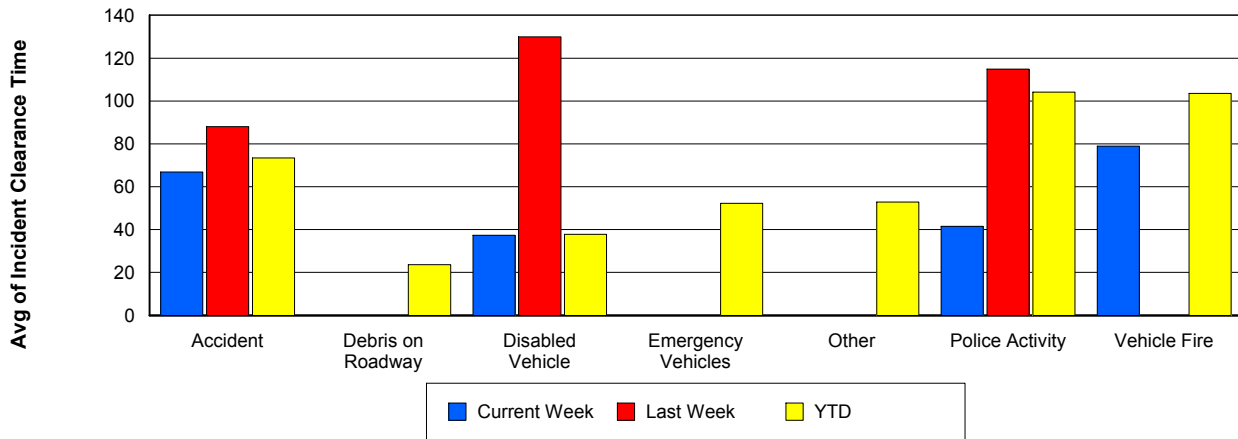
Road Ranger / SIRV Response Time



Roadway Clearance Time (2A)



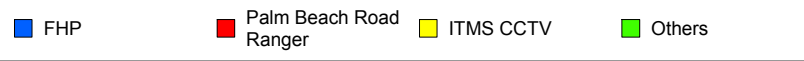
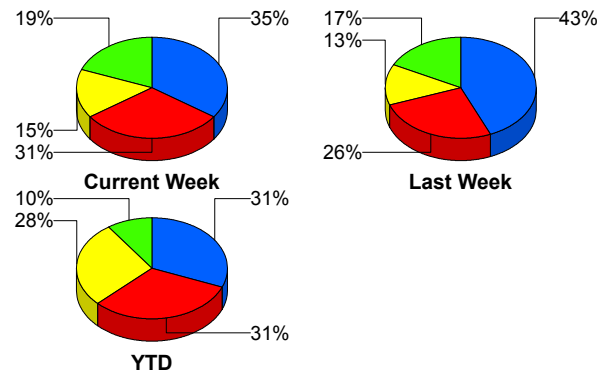
Incident Clearance Time (3B)



Incident Detection Methods

	Current Week	Last Week	YTD
Broward CCTV	0	0	7
Broward Road Ranger	0	0	6
Broward TMC	0	2	2
Broward VideoWall	0	0	1
Construction CEI	0	0	1
District 4	2	0	20
Emergency Operations	0	0	1
FHP	9	10	236
I-95 Construction PIO	0	0	2
ITMS	2	2	12
ITMS CCTV	4	3	208
Local Police	0	0	1
Media	0	0	2
Motorist	1	0	14
Palm Beach Road Ran	8	6	238
Road Watcher	0	0	1
SmarTraveler (511)	0	0	4
Total	26	23	756

Total Incidents by Detection Method

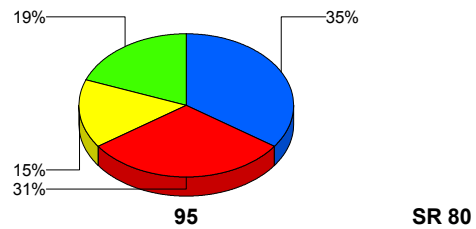


Incident Detection Methods by Roadway

		Current Week	Last Week	YTD
95	Broward CCTV	0	0	7
	Broward Road Ranger	0	0	6
	Broward TMC	0	2	2
	Broward VideoWall	0	0	1
	Construction CEI	0	0	1
	District 4	2	0	20
	FHP	9	10	235
	I-95 Construction PIO	0	0	2
	ITMS	2	2	11
	ITMS CCTV	4	3	208
	Local Police	0	0	1
	Media	0	0	2
	Motorist	1	0	14
	Palm Beach Road Ran	8	6	238
	Road Watcher	0	0	1
	SmarTraveler (511)	0	0	4
Total	26	23	753	
SR 80	Emergency Operations	0	0	1
	FHP	0	0	1
	ITMS	0	0	1
	Total	0	0	3
Total	26	23	756	

Total Events by Roadway and Detection Method

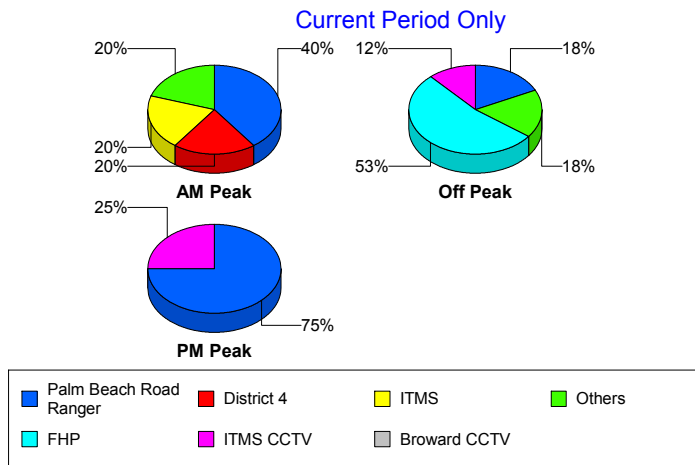
Current Period Only



Incident Detection Methods by Peak Period

		Current Week	Last Week	YTD
AM Peak	Broward CCTV	0	0	2
	Broward Road Ranger	0	0	3
	Broward TMC	0	2	2
	District 4	1	0	10
	FHP	0	1	78
	ITMS	1	0	5
	ITMS CCTV	1	1	31
	Motorist	0	0	6
	Palm Beach Road Ran	2	1	81
	Road Watcher	0	0	1
	SmarTraveler (511)	0	0	3
	Total	5	5	222
	Off Peak	Broward CCTV	0	0
Broward Road Ranger		0	0	1
Broward VideoWall		0	0	1
Construction CEI		0	0	1
District 4		1	0	7
FHP		9	6	112
I-95 Construction PIO		0	0	2
ITMS		1	2	6
ITMS CCTV		2	2	112
Motorist		1	0	5
Palm Beach Road Ran		3	3	84
SmarTraveler (511)		0	0	1
Total		17	13	336
PM Peak	Broward CCTV	0	0	1
	Broward Road Ranger	0	0	2
	District 4	0	0	3
	Emergency Operations	0	0	1
	FHP	0	3	46
	ITMS	0	0	1

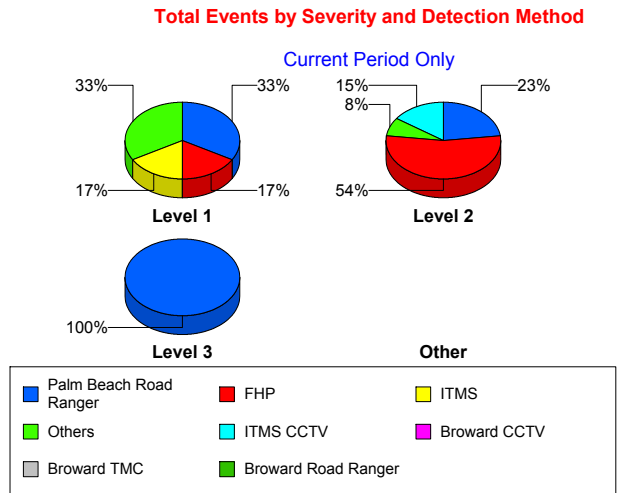
Total Events by Peak Period and Detection Method



		Current Week	Last Week	YTD
PM Peak	ITMS CCTV	1	0	65
	Local Police	0	0	1
	Media	0	0	2
	Motorist	0	0	3
	Palm Beach Road Ran	3	2	73
	Total	4	5	198
Total		26	23	756

Incident Detection Methods by Severity

		Current Week	Last Week	YTD
Level 1	Broward CCTV	0	0	5
	Broward Road Ranger	0	0	4
	District 4	1	0	14
	FHP	2	4	86
	I-95 Construction PIO	0	0	1
	ITMS	2	0	4
	ITMS CCTV	2	3	93
	Local Police	0	0	1
	Motorist	1	0	10
	Palm Beach Road Ran	4	1	168
	Road Watcher	0	0	1
	SmarTraveler (511)	0	0	1
	Total	12	8	388
	Level 2	Broward Road Ranger	0	0
Broward VideoWall		0	0	1
District 4		1	0	6
FHP		7	5	113
I-95 Construction PIO		0	0	1
ITMS		0	1	6
ITMS CCTV		2	0	84
Media		0	0	1
Motorist		0	0	3



		Current Week	Last Week	YTD
Level 2	Palm Beach Road Ran	3	4	57
	SmarTraveler (511)	0	0	3
	Total	13	10	277
Level 3	Broward CCTV	0	0	2
	Broward TMC	0	2	2
	Construction CEI	0	0	1
	Emergency Operations	0	0	1
	FHP	0	1	37
	ITMS	0	1	2
	ITMS CCTV	0	0	31
	Media	0	0	1
	Motorist	0	0	1
	Palm Beach Road Ran	1	1	13
	Total	1	5	91
Total		26	23	756

Road Ranger / SIRV Performance Measures

Road Ranger / SIRV Performance By County

RR/SIRV Responses per County

Values presented are:
 - Total Events with a RR/SIRV Response
 - Total RR/SIRV Responses,
 - Total Activities Performed

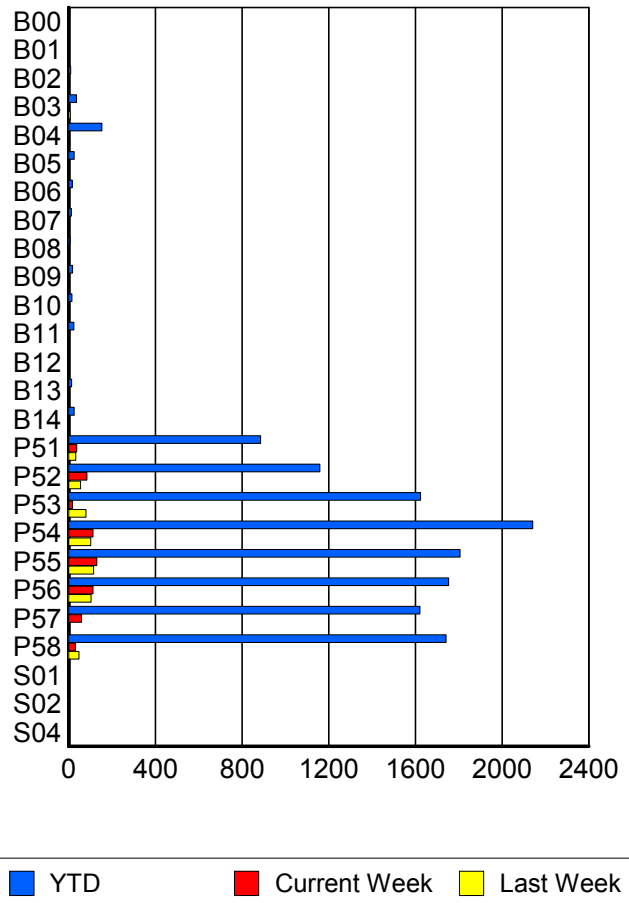
	Current We	Last Week	YTD
Palm Beach	584	532	12,679
	599	558	12,838
	648	587	14,035



Road Ranger / SIRV Performance By Truck

	Current We	Last Week	YTD
B00	0	0	5
	0	0	5
	0	0	5
B01	0	0	1
	0	0	1
	0	0	1
B02	0	0	10
	0	0	10
	0	0	10
B03	1	8	36
	1	8	36
	1	8	37
B04	3	5	152
	3	5	153
	3	5	176
B05	2	2	24
	2	2	25
	2	2	26
B06	0	0	17
	0	0	17
	0	0	17
B07	0	0	13
	0	0	13
	0	0	13
B08	0	0	7
	0	0	7
	0	0	8

RR/SIRV Responses per Truck



	Current We	Last Week	YTD
B09	1	2	18
	1	2	18
	1	2	18
B10	4	0	14
	4	0	15
	4	0	15
B11	1	0	24
	1	0	24
	1	0	25
B12	0	0	4
	0	0	4
	0	0	4
B13	0	0	14
	0	0	14
	0	0	15
B14	0	0	26
	0	0	26
	0	0	27
P51	38	33	877
	38	33	886
	40	35	930
P52	85	54	1,156
	85	55	1,160
	91	59	1,244
P53	17	80	1,606
	18	80	1,624
	19	84	1,718
P54	113	101	2,128
	113	102	2,141
	124	107	2,310
P55	129	114	1,798
	130	116	1,806
	138	119	1,939
P56	110	104	1,736
	112	104	1,753
	122	109	1,895
P57	59	3	1,605
	59	3	1,621
	65	3	1,741
P58	31	47	1,718
	32	47	1,742
	37	53	1,855
S01	0	1	2
	0	1	2
	0	1	2

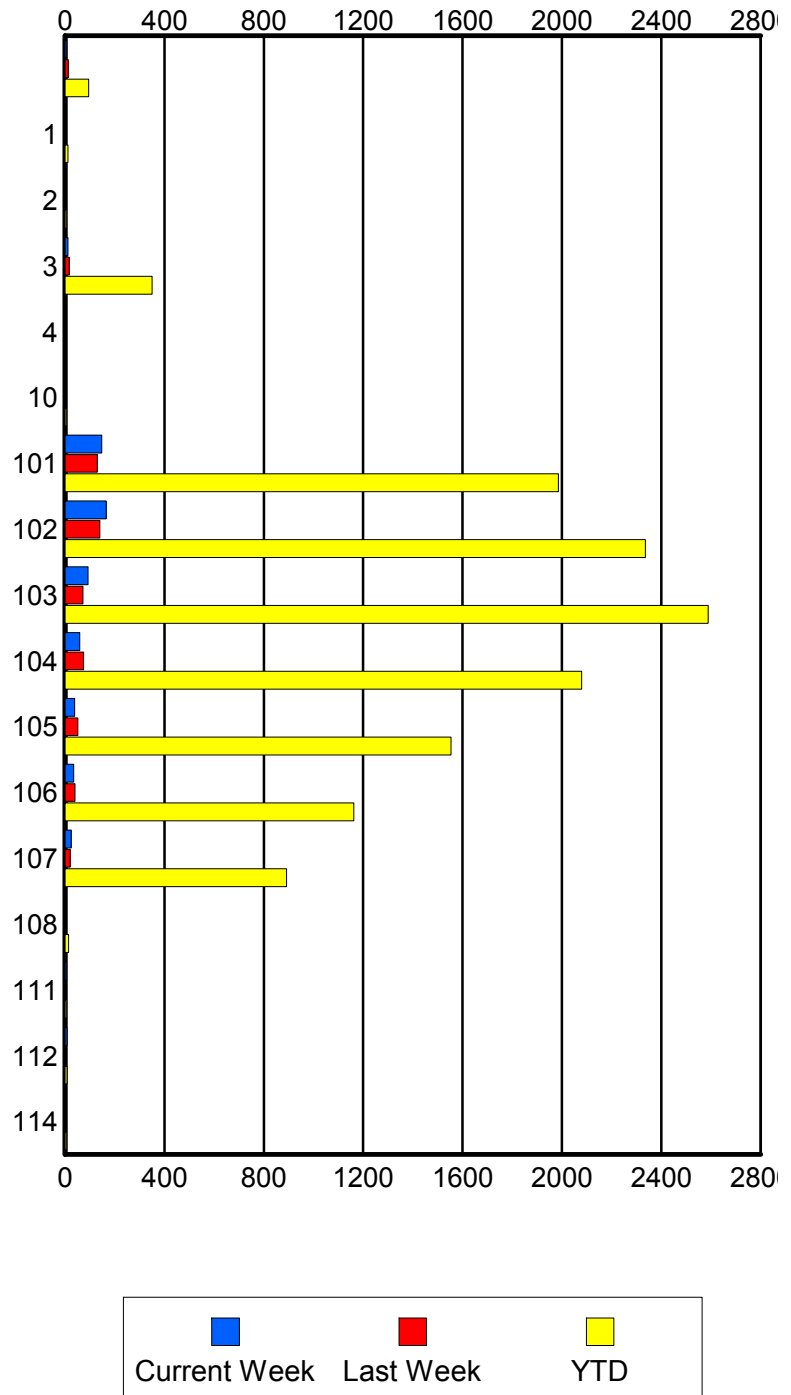
	Current We	Last Week	YTD
S02	0	0	2
	0	0	2
	0	0	2
S04	0	0	2
	0	0	2
	0	0	2

Road Ranger / SIRV Performance By Beat

	Current We	Last Week	YTD
	7	13	95
	7	13	95
	7	13	95
1	1	0	12
	1	0	12
	1	0	13
2	0	0	6
	0	0	6
	0	0	7
3	12	16	343
	12	17	350
	12	17	377
4	0	0	2
	0	0	2
	0	0	2
10	0	0	6
	0	0	6
	0	0	9
101	148	129	1,973
	148	130	1,986
	168	137	2,150
102	162	139	2,319
	166	140	2,336
	173	145	2,490
103	92	72	2,561
	93	72	2,589
	102	78	2,791
104	59	72	2,059
	59	74	2,079
	63	78	2,227
105	39	51	1,541
	39	51	1,553
	42	53	1,656
106	34	39	1,149
	35	40	1,162
	37	43	1,247
107	25	21	883
	25	21	892
	27	23	935
108	0	0	13
	0	0	14
	0	0	14
111	6	0	6
	6	0	6
	7	0	7

Values presented are:
 - Total Events with a RR/SIRV Response
 - Total RR/SIRV Responses,
 - Total Activities Performed

RR/SIRV Responses per Beat



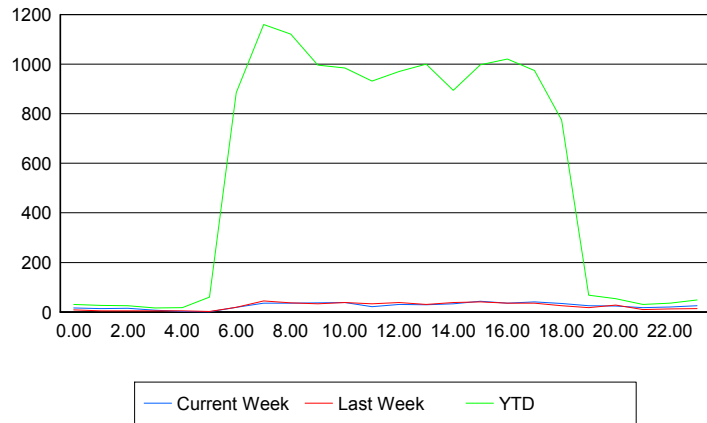
	Current We	Last Week	YTD
112	7	0	7
	8	0	8
	9	0	9
114	0	0	6
	0	0	6
	0	0	6

Road Ranger / SIRV Performance By Time of Day

Values presented are:
 - Total Events with a RR/SIRV Response
 - Total RR/SIRV Responses,
 - Total Activities Performed

	Current We	Last Week	YTD
12AM-1AM	16	9	30
	16	9	30
	16	9	30
1AM-2AM	14	4	24
	14	5	27
	15	5	28
2AM-3AM	15	4	25
	15	4	25
	16	5	28
3AM-4AM	7	3	14
	7	5	16
	8	5	17
4AM-5AM	2	4	15
	2	4	18
	2	4	19
5AM-6AM	1	1	55
	1	2	60
	1	2	63
6AM-7AM	18	17	849
	19	19	886
	19	19	933
7AM-8AM	34	42	1,110
	35	44	1,160
	38	48	1,244
8AM-9AM	35	35	1,076
	36	37	1,121
	38	39	1,201
9AM-10AM	36	33	962
	37	33	996
	43	34	1,091
10AM-11AM	38	37	950
	38	38	985
	40	39	1,040

Number of Responses / Hour of the Day



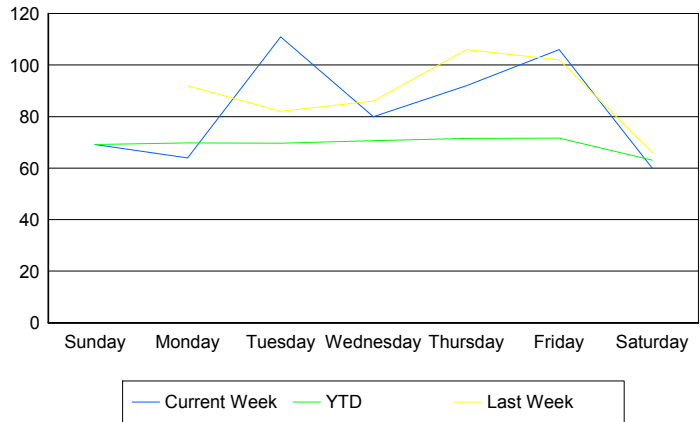
	Current We	Last Week	YTD
11AM-12PM	21	33	906
	21	33	932
	22	38	1,015
12PM-1PM	30	36	937
	30	38	971
	34	38	1,043
1PM-2PM	29	26	968
	29	30	1,000
	32	32	1,080
2PM-3PM	32	34	861
	33	38	895
	34	39	948
3PM-4PM	42	41	966
	43	41	997
	46	41	1,065
4PM-5PM	35	36	996
	36	36	1,021
	38	39	1,086
5PM-6PM	40	35	947
	41	36	975
	43	39	1,029
6PM-7PM	32	25	764
	34	25	774
	35	25	816
7PM-8PM	24	16	66
	25	17	68
	28	18	74
8PM-9PM	24	26	52
	24	28	54
	26	28	56
9PM-10PM	16	10	27
	18	10	30
	20	10	32
10PM-11PM	18	11	32
	20	12	35
	23	12	38
11PM-12AM	25	14	47
	25	14	48
	31	19	59

Road Ranger / SIRV Performance By Day of Week

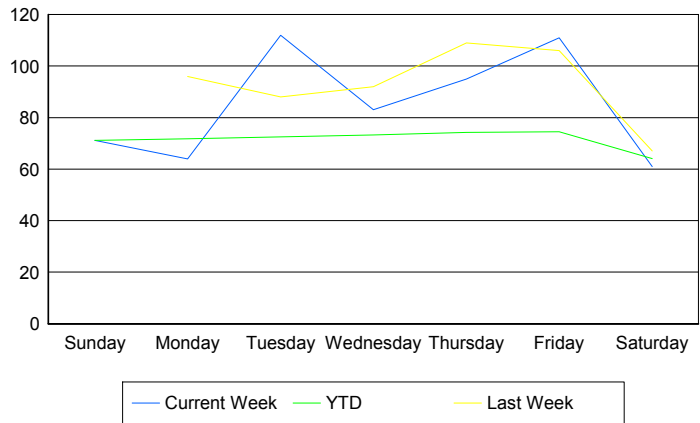
Values presented are:
 - Total Events with a RR/SIRV Response
 - Total RR/SIRV Responses,
 - Total Activities Performed

	Current We	Last Week	YTD
Sunday	71	0	71
	73	0	73
	77	0	77
Monday	64	92	2,445
	64	96	2,490
	71	105	2,659
Tuesday	111	82	2,427
	112	88	2,507
	123	93	2,693
Wednesday	80	86	2,502
	83	92	2,591
	93	95	2,781
Thursday	92	106	2,552
	95	109	2,614
	102	116	2,842
Friday	106	102	2,565
	111	106	2,668
	117	110	2,850
Saturday	60	66	126
	61	67	128
	65	68	133

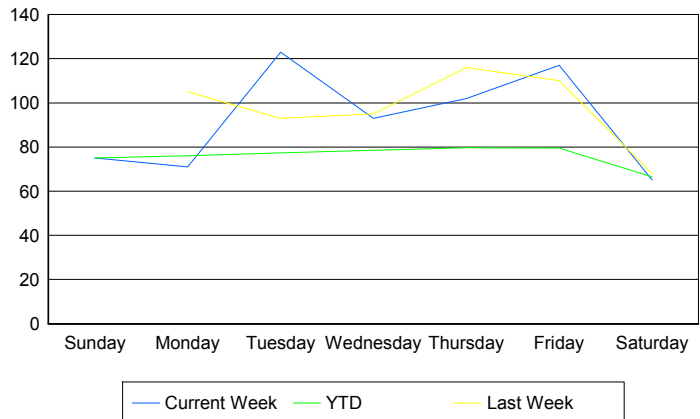
Avg # of events with a RR/SIRV Response per Day of the Week



Avg # of RR/SIRV Responses per Day of the Week



Avg # of RR/SIRV Activities Performed per Day of the Week



Road Ranger / SIRV Responses per Time of Day and Day of Week

