



# Weekly Performance Measures Report Palm Beach County



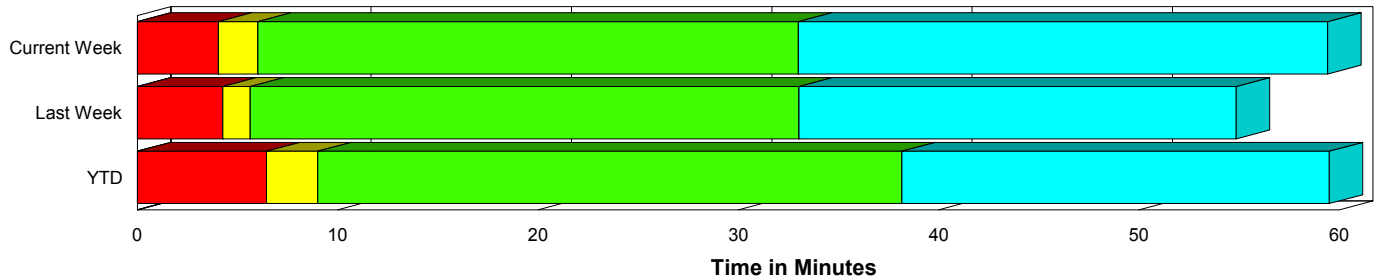
Period From Feb 14, 2010 to Feb 20, 2010

Created on:  
February 22, 2010  
8:57 am

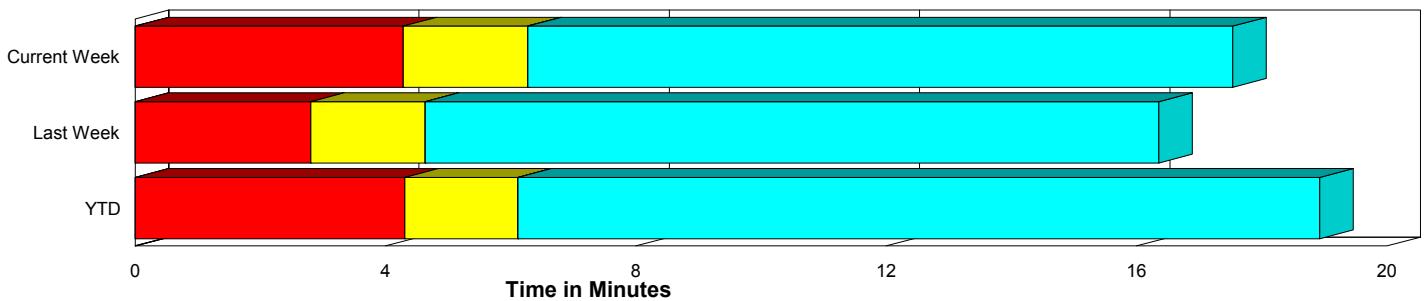
## Performance Measures Summary

	Traffic Events (No Lanes Blocked)			Incidents (Lanes Blocked)		
	<u>This Week</u>	<u>Last Week</u>	<u>YTD</u>	<u>This Week</u>	<u>Last Week</u>	<u>YTD</u>
Number of Events	443	440	3,030	19	21	162
TMC Detection (min.)	0.00	0.00	0.00	0.00	0.00	0.00
TMC Verification (min.)	4.28	2.81	4.31	4.05	4.27	6.45
TMC Response (min.)	6.65	4.99	6.44	6.24	5.63	9.18
RR Dispatch Time (min.)	2.06	1.35	2.27	1.36	0.74	1.88
RR Response Time (min.)	4.65	3.74	4.21	4.87	4.89	7.29
Roadway Clearance (min.)				31.89	33.03	38.68
Event Clearance (min.)	17.91	16.71	19.25	58.28	54.84	59.99
# of Events w/ RR/SIRV	428	413	2,914	18	21	158
RR/SIRV Responses	428	413	2,914	18	21	158
RR/SIRV Activities	440	435	3,086	23	25	204

### Incident Clearance Time-Line



### Traffic Event (Non-Lane Blockage) Time-Line



<span style="color: blue;">■</span> Avg. TMC Detection Time	<span style="color: green;">■</span> Avg. Time from TMC Response to Roadway Clearance*
<span style="color: red;">■</span> Avg. Time from TMC Detection to TMC Verification	<span style="color: cyan;">■</span> Avg. Time from Roadway Clearance to Incident/Event Clearance**
<span style="color: yellow;">■</span> Avg. Time from TMC Verification to TMC Response	

\* Roadway clearance equals all travel lanes open

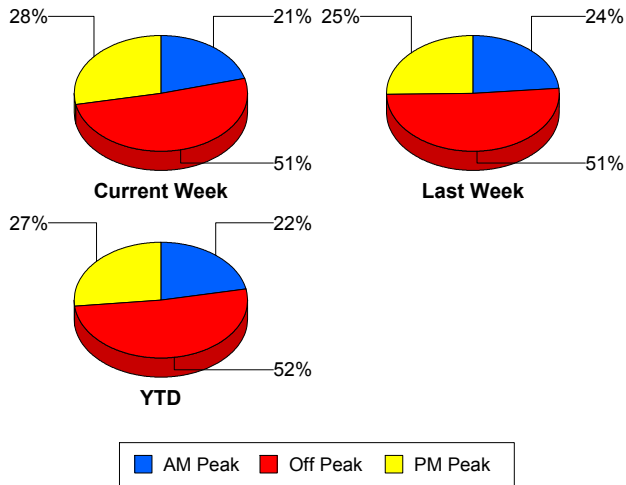
\*\* Incident clearance equals time when last responder has left the scene

## Performance Measures by Peak Period

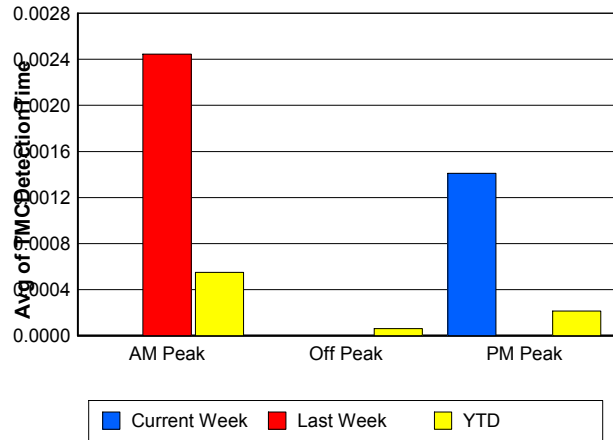
Note: AM peak period is defined as 6am to 10am and PM peak period is defined as 3pm to 7pm.

	AM Peak			Off Peak			PM Peak		
	Current Week	Last Week	YTD	Current Week	Last Week	YTD	Current Week	Last Week	YTD
Number of Events	96	109	696	236	236	1,644	130	116	852
Number of Incidents	4	3	43	11	9	76	4	9	43
TMC Detection (min.)	0.00	0.00	0.00	0.00	0.00	0.00	0.00	0.00	0.00
TMC Verification (min.)	2.84	1.49	3.15	3.96	2.52	4.61	5.89	4.92	5.09
TMC Response (min.)	3.82	4.11	5.28	6.72	4.98	7.22	8.46	5.87	6.41
RR Dispatch Time (min.)	0.66	0.82	1.09	1.79	1.46	2.76	3.45	1.50	2.20
RR Response Time (min.)	3.22	3.56	4.23	5.02	3.60	4.52	5.00	4.38	4.21
Event Clearance (min.)	15.59	17.65	20.83	20.08	18.48	22.08	21.60	19.15	20.27
Roadway Clearance (min.)	18.06	40.16	39.95	40.53	38.13	40.75	21.94	25.56	33.75
Incident Clearance (min.)	24.48	92.54	68.46	68.04	49.69	59.31	65.22	47.43	52.71
# of Events w/ RR/SIRV	92	98	664	227	224	1,582	127	112	826
RR/SIRV Responses	92	98	664	227	224	1,582	127	112	826
RR/SIRV Activities	89	111	712	243	230	1,692	131	119	886

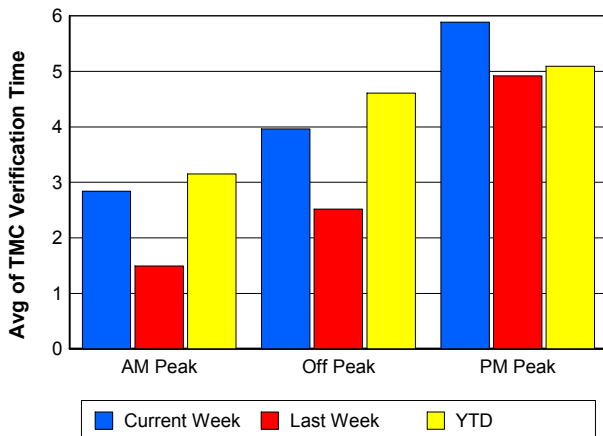
### Number of Events / Peak Period



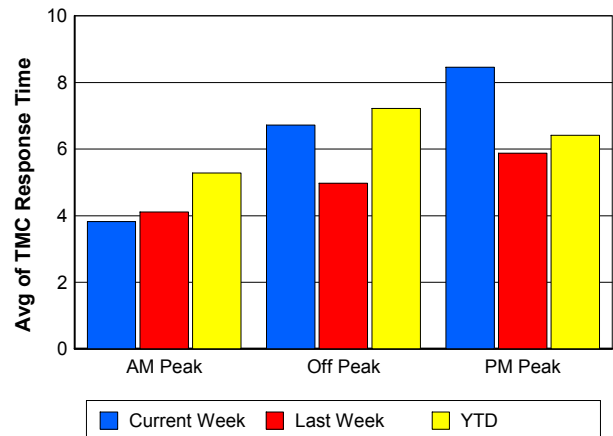
### TMC Detection Time



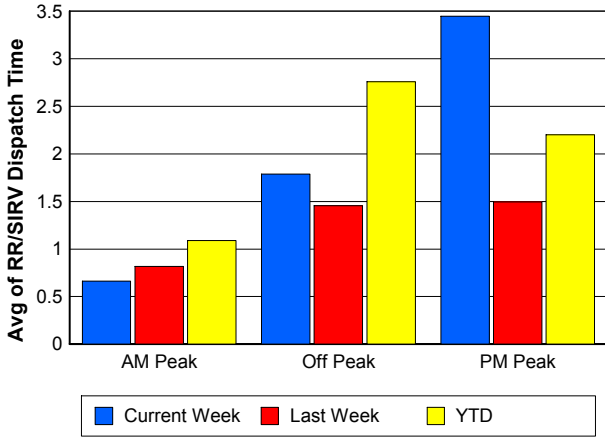
### TMC Verification Time



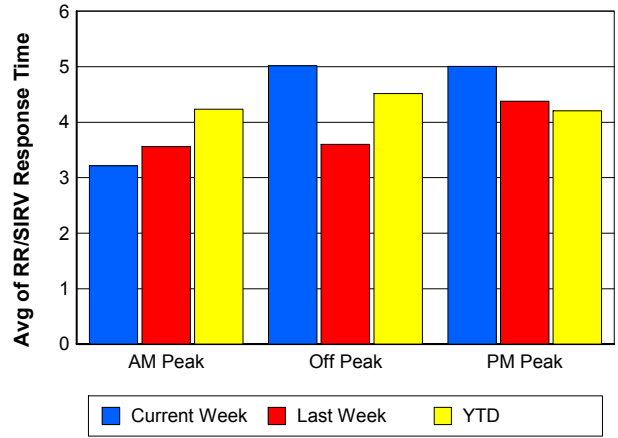
### TMC Response Time



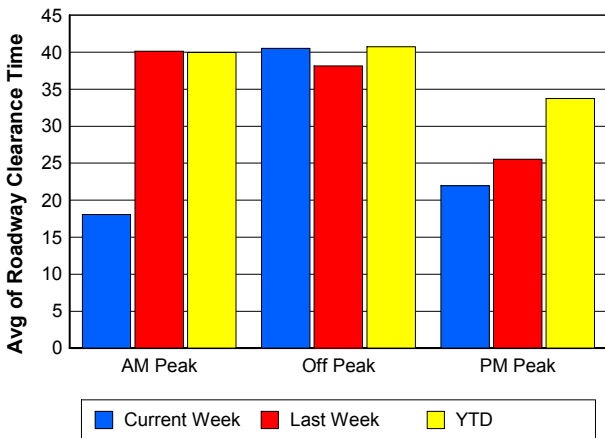
### Road Ranger / SIRV Dispatch Time



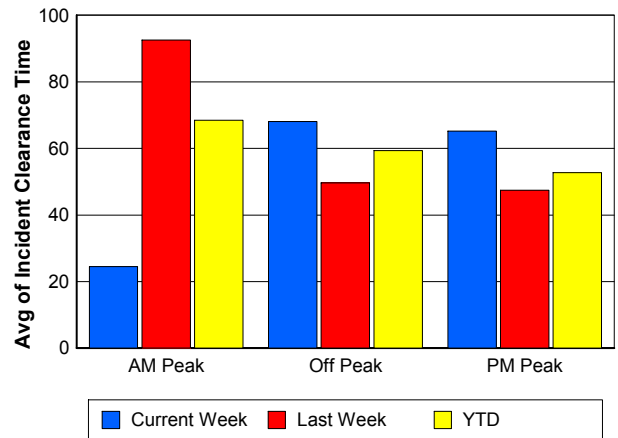
### Road Ranger / SIRV Response Time



### Roadway Clearance Time (2A)



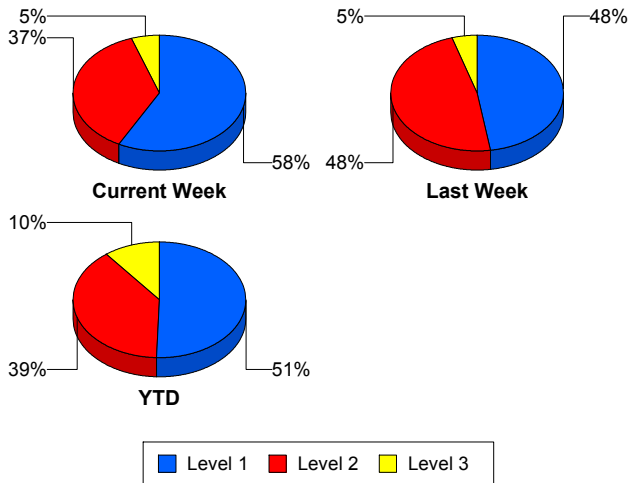
### Incident Clearance Time (3B)



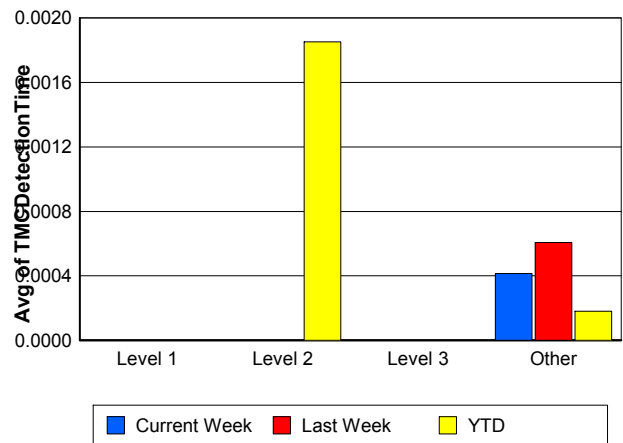
## Performance Measures by Severity

	Level 1			Level 2			Level 3			Other		
	<u>This Week</u>	<u>Last Week</u>	<u>YTD</u>	<u>This Week</u>	<u>Last Week</u>	<u>YTD</u>	<u>This Week</u>	<u>Last Week</u>	<u>YTD</u>	<u>This Week</u>	<u>Last Week</u>	<u>YTD</u>
Number of Events	11	10	82	7	10	63	1	1	17	443	440	3,030
Number of Incidents	11	10	82	7	10	63	1	1	17	0	0	0
TMC Detection (min.)	0.00	0.00	0.00	0.00	0.00	0.00	0.00	0.00	0.00	0.00	0.00	0.00
TMC Verification (min.)	2.07	4.54	3.37	7.74	4.42	10.92	0.00	0.00	4.75	4.28	2.81	4.31
TMC Response (min.)	5.58	5.36	5.64	8.06	4.75	13.80	0.00	17.17	8.40	6.65	4.99	6.44
RR Dispatch Time (min.)	0.76	0.42	0.74	2.42	0.94	3.30	0.00	2.05	2.01	2.06	1.35	2.27
RR Resp. Time (min.)	4.82	4.94	4.91	5.64	3.81	10.49	0.00	15.12	6.39	4.65	3.74	4.21
Event Clearance (min.)	41.41	47.29	45.09	77.23	59.39	69.62	111.17	84.88	96.12	17.91	16.71	19.25
Roadway Clear. (min.)	14.88	13.93	15.71	58.32	48.62	57.73	33.95	68.10	78.85			
Incident Clearance (min.)	41.41	47.29	45.09	77.23	59.39	69.62	111.17	84.88	96.12			
# of Events w/ RR/SIRV	10	10	80	7	10	63	1	1	15	428	413	2,914
RR/SIRV Responses	10	10	80	7	10	63	1	1	15	428	413	2,914
RR/SIRV Activities	12	11	93	10	12	90	1	2	21	440	435	3,086

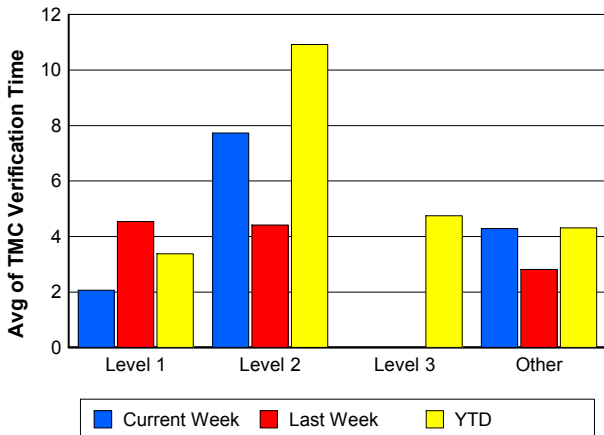
### Number of Events / Severity



### TMC Detection Time



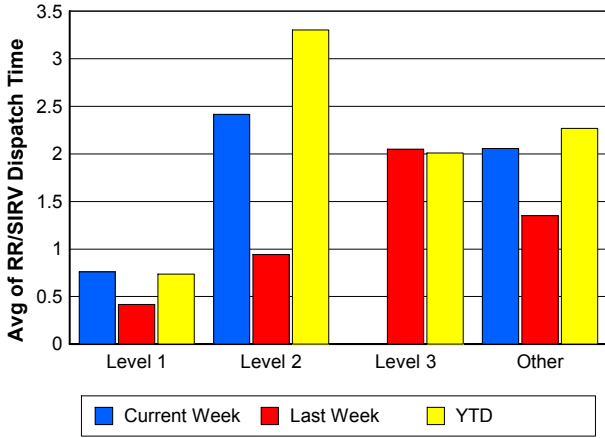
### TMC Verification Time



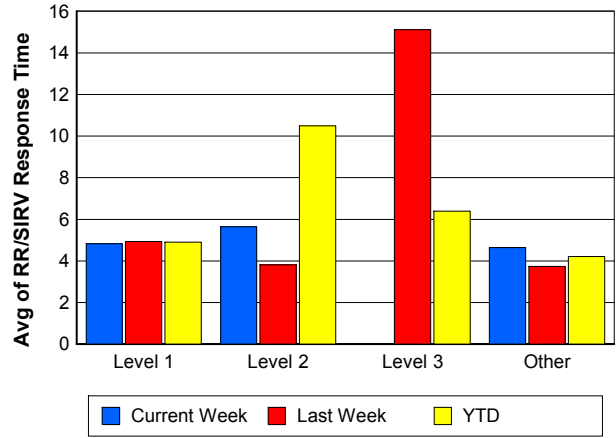
### TMC Response Time



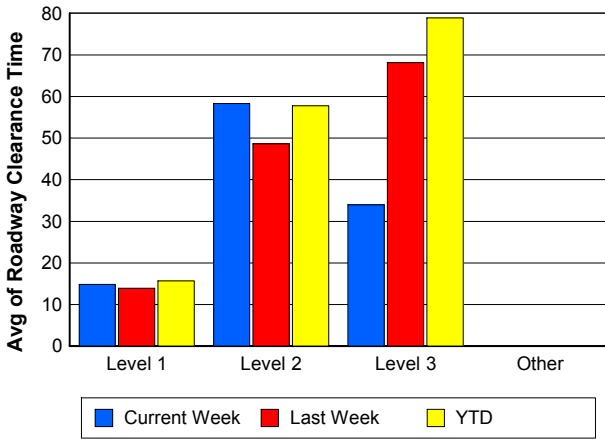
## Road Ranger / SIRV Dispatch Time



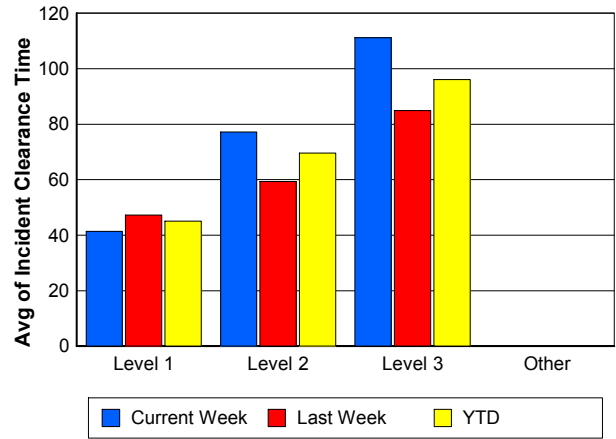
## Road Ranger / SIRV Response Time



## Roadway Clearance Time (2A)



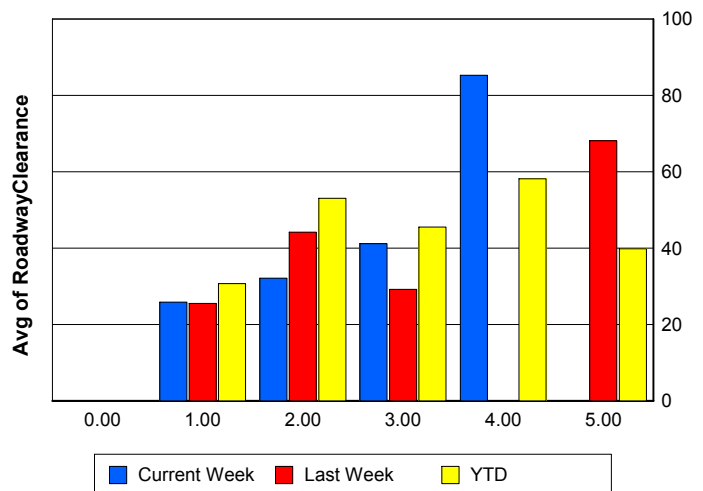
## Incident Clearance Time (3B)



## Roadway Clearance by Maximum Number of Lanes Blocked

	Current Week	Last Week	YTD
0			
1	25.81	25.49	30.71
2	32.12	44.16	53.07
3	41.16	29.15	45.49
4	85.27	0.00	58.15
5	0.00	68.10	39.83

## Roadway Clearance Time (2A)



## Performance Measures by Roadway

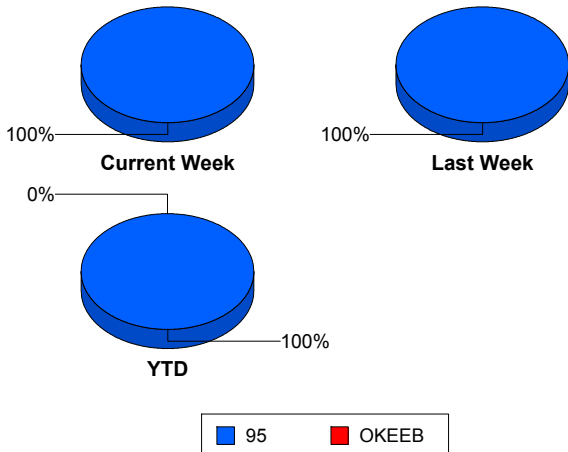
95

	<u>Current Week</u>	<u>Last Week</u>	<u>YTD</u>
Number of Events	462	461	3,191
Number of Incidents	19	21	162
TMC Detection (min.)	0.00	0.00	0.00
TMC Verification (min.)	4.27	2.88	4.42
TMC Response (min.)	6.63	5.02	6.59
RR Dispatch Time (min.)	2.03	1.32	2.25
RR Resp. Time (min.)	4.66	3.80	4.37
Event Clearance (min.)	19.57	18.45	21.32
Roadway Clear. (min.)	31.89	33.03	38.68
Incident Clearance (min.)	58.28	54.84	59.99
# of Events w/ RR/SIRV	446	434	3,071
RR/SIRV Responses	446	434	3,071
RR/SIRV Activities	463	460	3,289

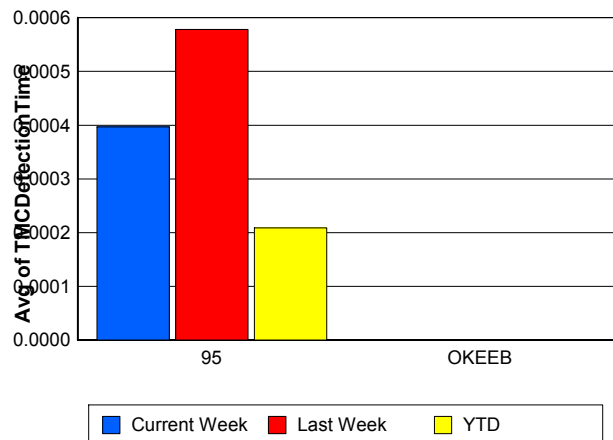
OKEEB

	<u>YTD</u>
Number of Events	1
Number of Incidents	0
TMC Detection (min.)	0.00
TMC Verification (min.)	0.00
TMC Response (min.)	0.00
RR Dispatch Time (min.)	0.00
RR Resp. Time (min.)	0.00
Event Clearance (min.)	18.45
Roadway Clear. (min.)	
Incident Clearance (min.)	
# of Events w/ RR/SIRV	1
RR/SIRV Responses	1
RR/SIRV Activities	1

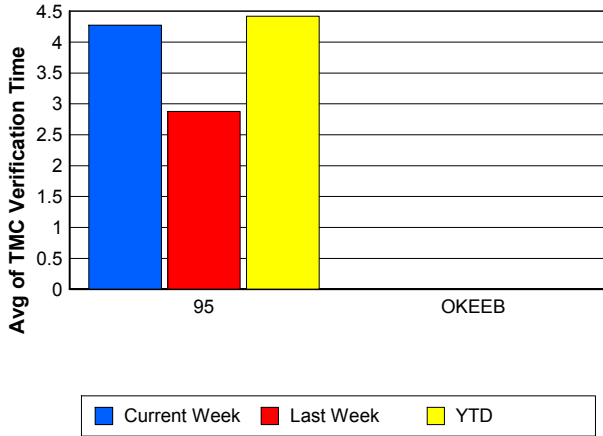
### Number of Events / Roadway



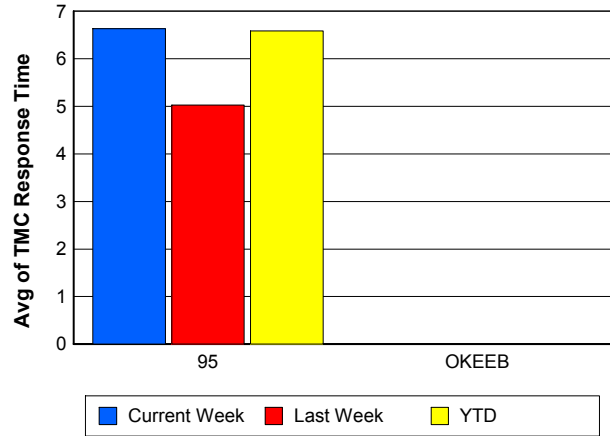
### TMC Detection Time



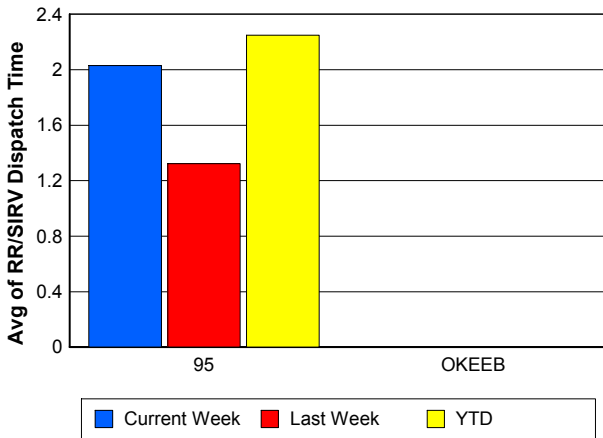
### TMC Verification Time



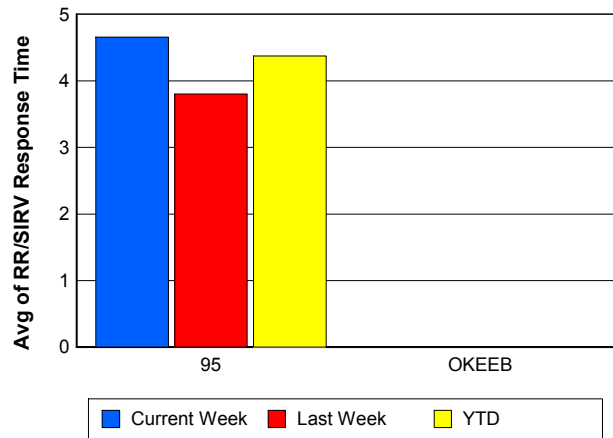
### TMC Response Time



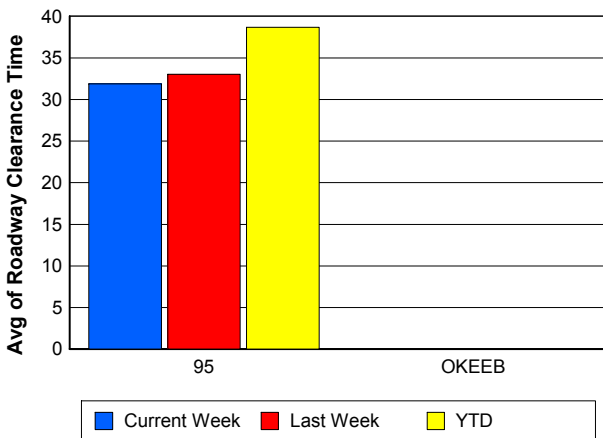
### Road Ranger / SIRV Dispatch Time



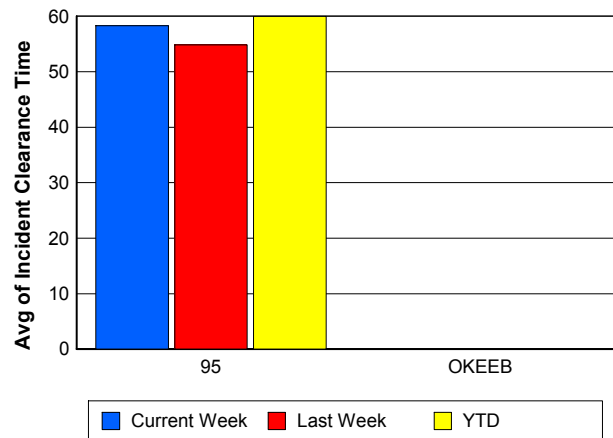
### Road Ranger / SIRV Response Time



### Roadway Clearance Time (2A)



### Incident Clearance Time (3B)



## Performance Measures by Event Type

### Accident

	<u>Current Week</u>	<u>Last Week</u>	<u>YTD</u>
Number of Events	31	34	264
Number of Incidents	13	15	114
TMC Detection (min.)	0.01	0.01	0.00
TMC Verification (min.)	5.70	5.61	7.44
TMC Response (min.)	7.42	7.17	10.05
RR Dispatch Time (min.)	1.31	1.07	1.95
RR Response Time (min.)	6.12	6.10	8.11
Event Clearance (min.)	52.08	55.48	55.35
Roadway Clearance (min.)	39.14	35.86	41.18
Incident Clearance (min.)	64.77	63.99	67.22
# of Events w/ RR/SIRV	31	34	258
RR/SIRV Assists	31	34	258
RR/SIRV Activities	36	39	302

### Debris on Roadway

	<u>Current Week</u>	<u>Last Week</u>	<u>YTD</u>
Number of Events	31	15	190
Number of Incidents	1	0	4
TMC Detection (min.)	0.00	0.00	0.00
TMC Verification (min.)	8.75	3.71	8.49
TMC Response (min.)	8.74	3.70	8.56
RR Dispatch Time (min.)	1.33	0.38	2.58
RR Response Time (min.)	7.41	3.31	5.97
Event Clearance (min.)	11.19	7.67	11.62
Roadway Clearance (min.)	15.02		8.75
Incident Clearance (min.)	15.60		16.64
# of Events w/ RR/SIRV	31	15	188
RR/SIRV Assists	31	15	188
RR/SIRV Activities	33	15	191

### Disabled Vehicle

	<u>Current Week</u>	<u>Last Week</u>	<u>YTD</u>
Number of Events	372	385	2,571
Number of Incidents	3	5	33
TMC Detection (min.)	0.00	0.00	0.00
TMC Verification (min.)	4.07	2.80	4.06
TMC Response (min.)	6.19	4.76	5.93
RR Dispatch Time (min.)	2.10	1.37	2.25
RR Response Time (min.)	4.13	3.50	3.74
Event Clearance (min.)	17.97	15.47	18.47
Roadway Clearance (min.)	13.37	28.99	32.24
Incident Clearance (min.)	43.73	30.96	42.17
# of Events w/ RR/SIRV	366	364	2,505
RR/SIRV Assists	366	364	2,505
RR/SIRV Activities	383	389	2,711

## Emergency Vehicles

	<u>Current Week</u>	<u>YTD</u>
Number of Events	1	4
Number of Incidents	1	3
TMC Detection (min.)	0.00	0.00
TMC Verification (min.)	0.00	0.00
TMC Response (min.)		0.00
RR Dispatch Time (min.)		0.00
RR Response Time (min.)		0.00
Event Clearance (min.)	7.37	65.10
Roadway Clearance (min.)	7.97	78.74
Incident Clearance (min.)	7.37	79.08
# of Events w/ RR/SIRV	0	2
RR/SIRV Assists	0	2
RR/SIRV Activities	0	2

## Other

	<u>Current Week</u>	<u>Last Week</u>	<u>YTD</u>
Number of Events	19	22	129
Number of Incidents	0	0	0
TMC Detection (min.)	0.00	0.00	0.00
TMC Verification (min.)	0.00	0.00	0.32
TMC Response (min.)	13.84	8.88	11.64
RR Dispatch Time (min.)	2.99	1.66	2.62
RR Response Time (min.)	9.55	7.21	8.27
Event Clearance (min.)	9.33	19.20	19.58
Roadway Clearance (min.)			
Incident Clearance (min.)			
# of Events w/ RR/SIRV	11	17	90
RR/SIRV Assists	11	17	90
RR/SIRV Activities	7	13	59

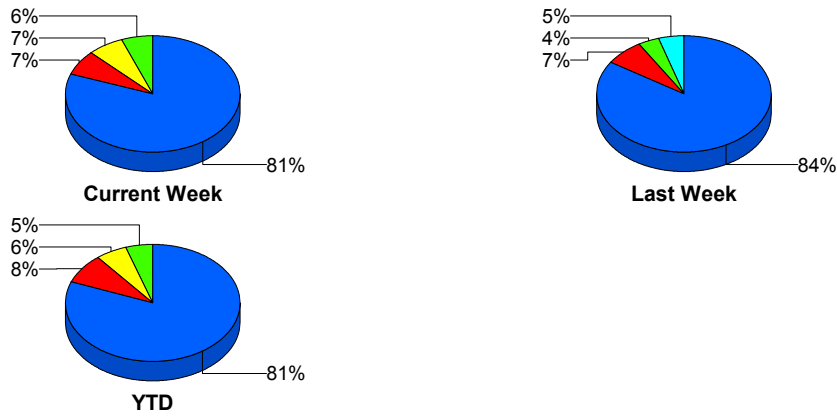
## Police Activity

	<u>Current Week</u>	<u>Last Week</u>	<u>YTD</u>
Number of Events	5	1	17
Number of Incidents	0	0	5
TMC Detection (min.)	0.00	0.00	0.00
TMC Verification (min.)	0.00	0.00	0.00
TMC Response (min.)	16.83		20.52
RR Dispatch Time (min.)	4.38		2.26
RR Response Time (min.)	15.00		19.47
Event Clearance (min.)	13.70	28.40	32.66
Roadway Clearance (min.)			30.78
Incident Clearance (min.)			33.02
# of Events w/ RR/SIRV	5	0	13
RR/SIRV Assists	5	0	13
RR/SIRV Activities	2	0	8

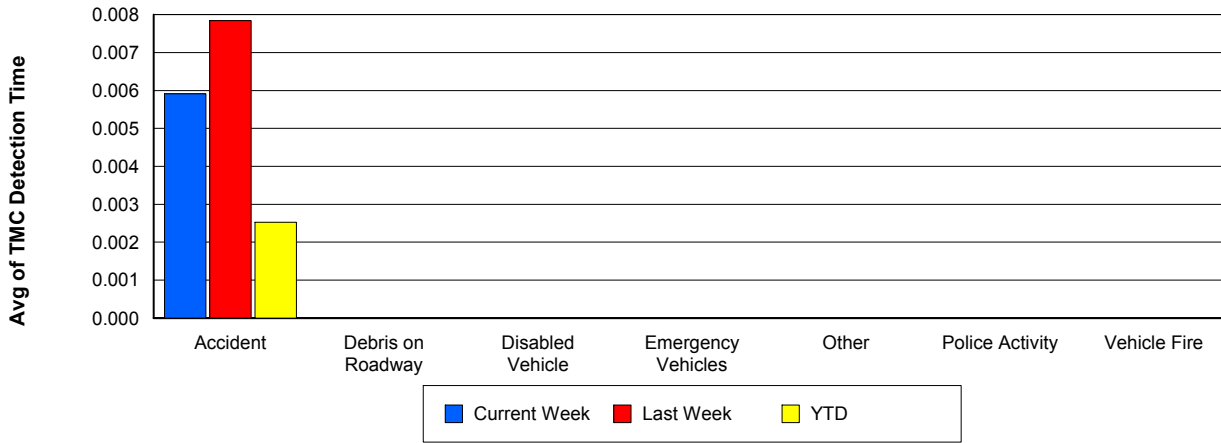
## Vehicle Fire

	<u>Current Week</u>	<u>Last Week</u>	<u>YTD</u>
Number of Events	2	1	7
Number of Incidents	1	1	3
TMC Detection (min.)	0.00	0.00	0.00
TMC Verification (min.)	0.00	0.00	3.19
TMC Response (min.)	0.00	0.00	3.97
RR Dispatch Time (min.)	0.00	0.00	1.43
RR Response Time (min.)	0.00	0.00	2.54
Event Clearance (min.)	66.57	36.98	39.30
Roadway Clearance (min.)	33.95	10.75	27.58
Incident Clearance (min.)	111.17	36.98	64.94
# of Events w/ RR/SIRV	1	1	6
RR/SIRV Assists	1	1	6
RR/SIRV Activities	1	1	6

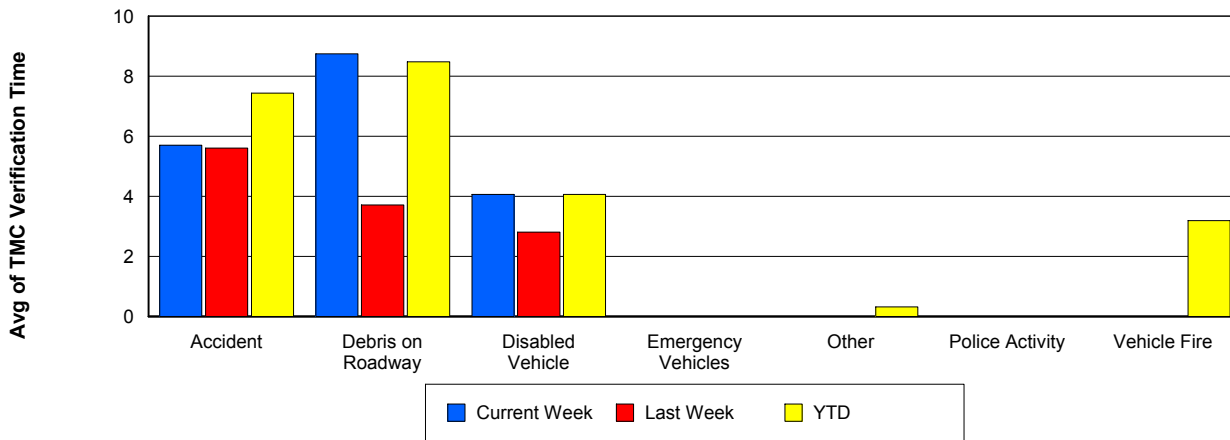
## Number of Events / Event Type



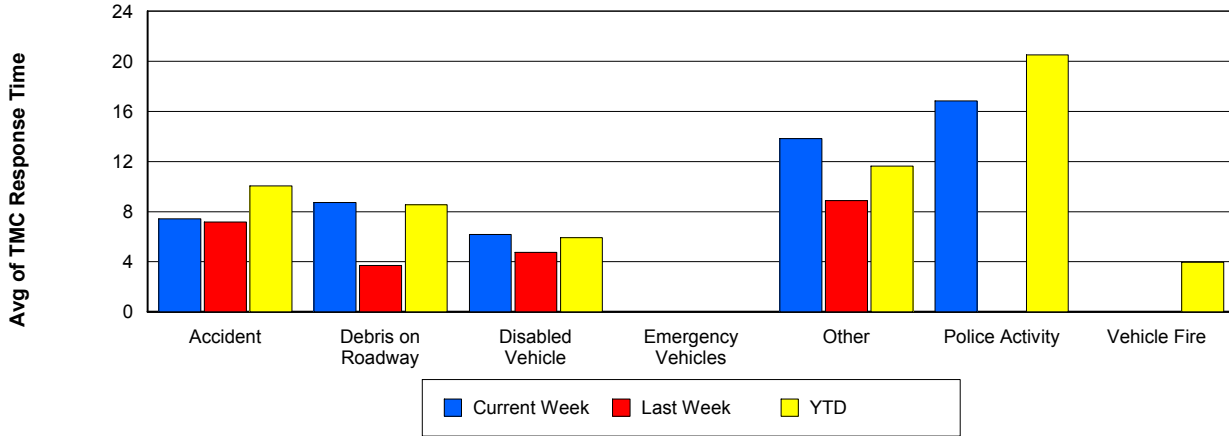
## TMC Detection Time



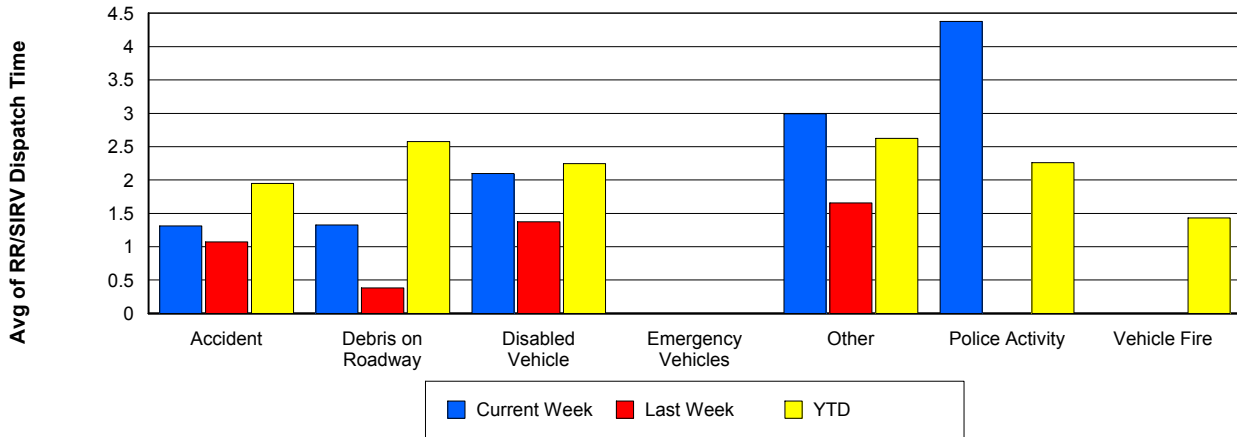
## TMC Verification Time



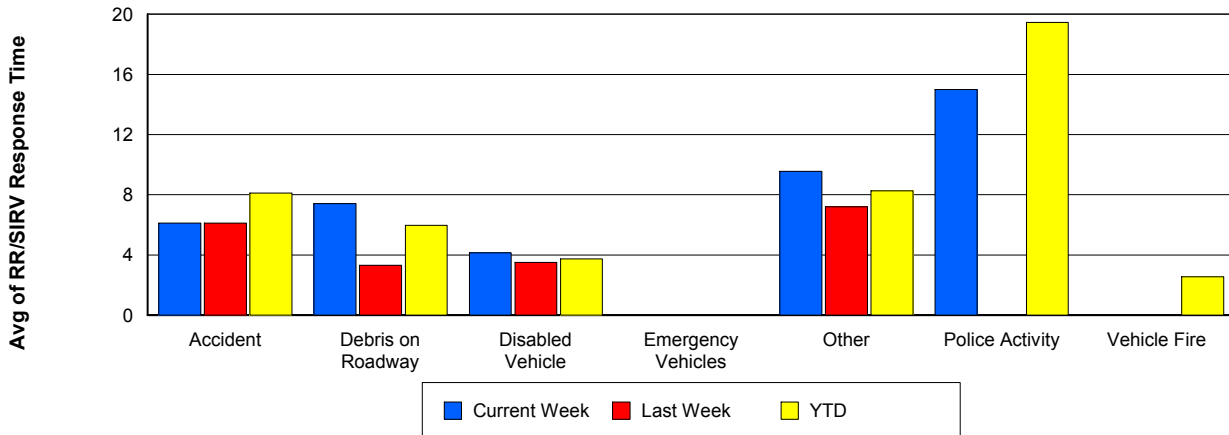
## TMC Response Time



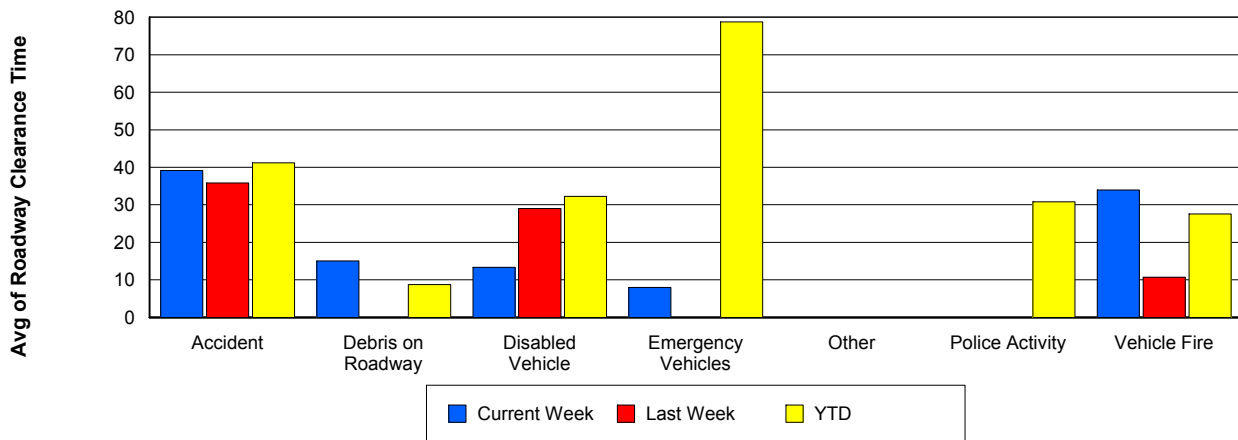
## Road Ranger / SIRV Dispatch Time



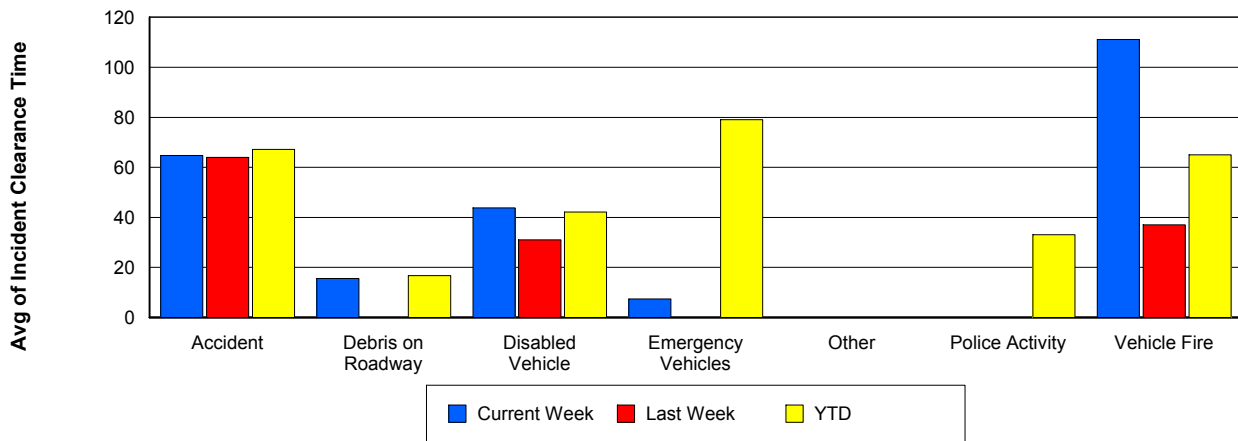
## Road Ranger / SIRV Response Time



## Roadway Clearance Time (2A)



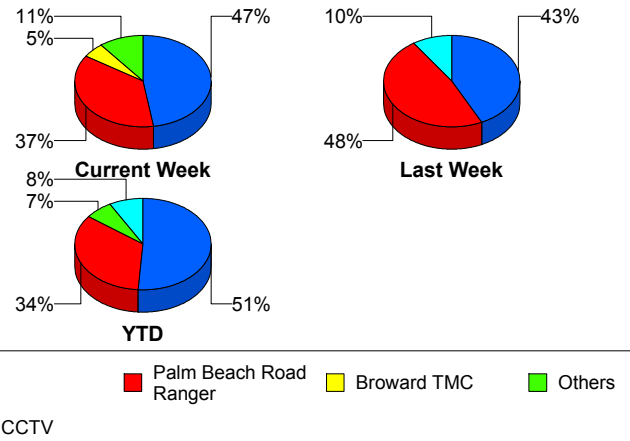
## Incident Clearance Time (3B)



## Incident Detection Methods

	Current Week	Last Week	YTD
Broward Road Ranger	0	0	2
Broward TMC	1	0	3
District 4	1	0	4
FHP	9	9	83
ITMS CCTV	1	2	13
Motorist	0	0	2
Palm Beach Road Ran	7	10	55
<b>Total</b>	<b>19</b>	<b>21</b>	<b>162</b>

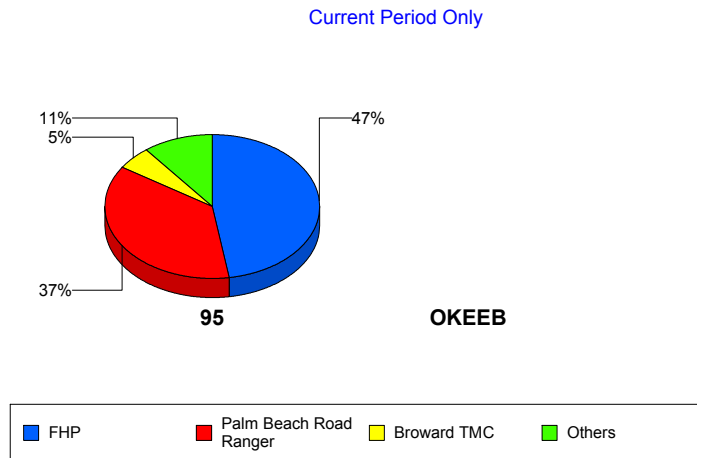
### Total Incidents by Detection Method



## Incident Detection Methods by Roadway

		Current Week	Last Week	YTD
95	Broward Road Ranger	0	0	2
	Broward TMC	1	0	3
	District 4	1	0	4
	FHP	9	9	83
	ITMS CCTV	1	2	13
	Motorist	0	0	2
	Palm Beach Road Ran	7	10	55
	<b>Total</b>	<b>19</b>	<b>21</b>	<b>162</b>
<b>Total</b>		<b>19</b>	<b>21</b>	<b>162</b>

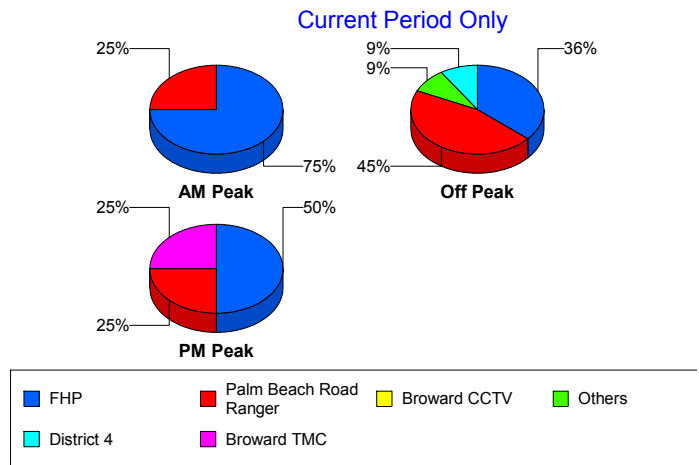
### Total Events by Roadway and Detection Method



## Incident Detection Methods by Peak Period

		Current Week	Last Week	YTD
AM Peak	Broward Road Ranger	0	0	1
	District 4	0	0	1
	FHP	3	3	23
	ITMS CCTV	0	0	4
	Palm Beach Road Ran	1	0	14
	<b>Total</b>	<b>4</b>	<b>3</b>	<b>43</b>
Off Peak	Broward Road Ranger	0	0	1
	Broward TMC	0	0	1
	District 4	1	0	2
	FHP	4	2	37
	ITMS CCTV	1	2	8
	Motorist	0	0	1
	Palm Beach Road Ran	5	5	26
	<b>Total</b>	<b>11</b>	<b>9</b>	<b>76</b>
PM Peak	Broward TMC	1	0	2
	District 4	0	0	1
	FHP	2	4	23
	ITMS CCTV	0	0	1
	Motorist	0	0	1
	Palm Beach Road Ran	1	5	15
	<b>Total</b>	<b>4</b>	<b>9</b>	<b>43</b>
<b>Total</b>	<b>19</b>	<b>21</b>	<b>162</b>	

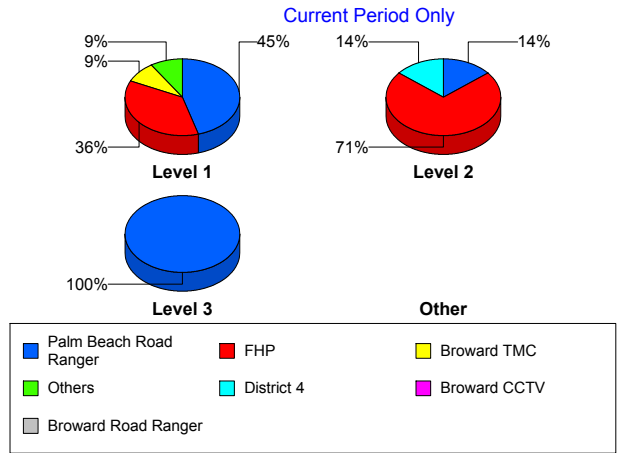
Total Events by Peak Period and Detection Method



## Incident Detection Methods by Severity

		Current Week	Last Week	YTD
Level 1	Broward Road Ranger	0	0	2
	Broward TMC	1	0	1
	District 4	0	0	2
	FHP	4	5	32
	ITMS CCTV	1	0	6
	Motorist	0	0	2
	Palm Beach Road Ran	5	5	37
	<b>Total</b>	<b>11</b>	<b>10</b>	<b>82</b>
Level 2	Broward TMC	0	0	2
	District 4	1	0	1
	FHP	5	4	43
	ITMS CCTV	0	1	5
	Palm Beach Road Ran	1	5	12
	<b>Total</b>	<b>7</b>	<b>10</b>	<b>63</b>
Level 3	District 4	0	0	1
	FHP	0	0	8
	ITMS CCTV	0	1	2
	Palm Beach Road Ran	1	0	6
	<b>Total</b>	<b>1</b>	<b>1</b>	<b>17</b>
<b>Total</b>		<b>19</b>	<b>21</b>	<b>162</b>

**Total Events by Severity and Detection Method**



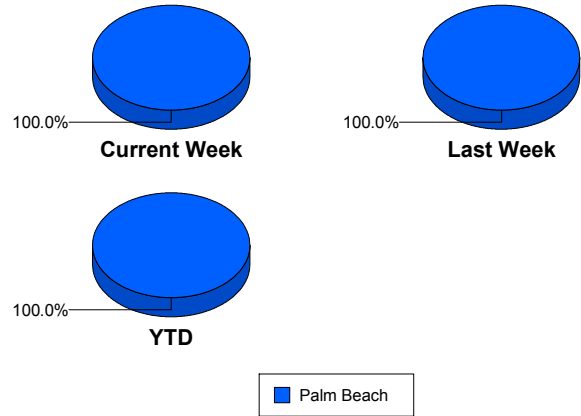
# Road Ranger / SIRV Performance Measures

## Road Ranger / SIRV Performance By County

Values presented are:  
 - Total Events with a RR/SIRV Response  
 - Total RR/SIRV Responses,  
 - Total Activities Performed

	Current We	Last Week	YTD
Palm Beach	551	557	4,002
	566	577	4,130
	597	614	4,372

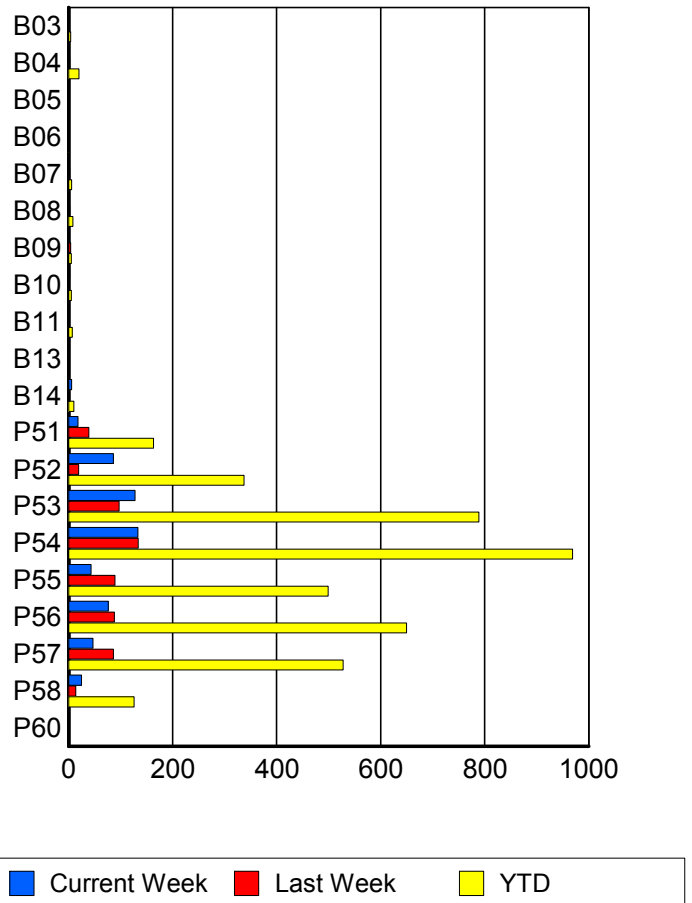
RR/SIRV Responses per County



## Road Ranger / SIRV Performance By Truck

	Current We	Last Week	YTD
B03	1	1	4
	1	1	4
	1	1	5
B04	0	2	20
	0	2	20
	0	2	21
B05	0	0	1
	0	0	1
	0	0	1
B06	0	0	1
	0	0	1
	0	0	3
B07	0	2	6
	0	2	6
	0	2	6
B08	0	2	8
	0	2	8
	0	2	8
B09	0	4	5
	0	4	5
	0	5	6
B10	2	0	5
	2	0	5
	2	0	5
B11	0	0	7
	0	0	7
	0	0	7

RR/SIRV Responses per Truck



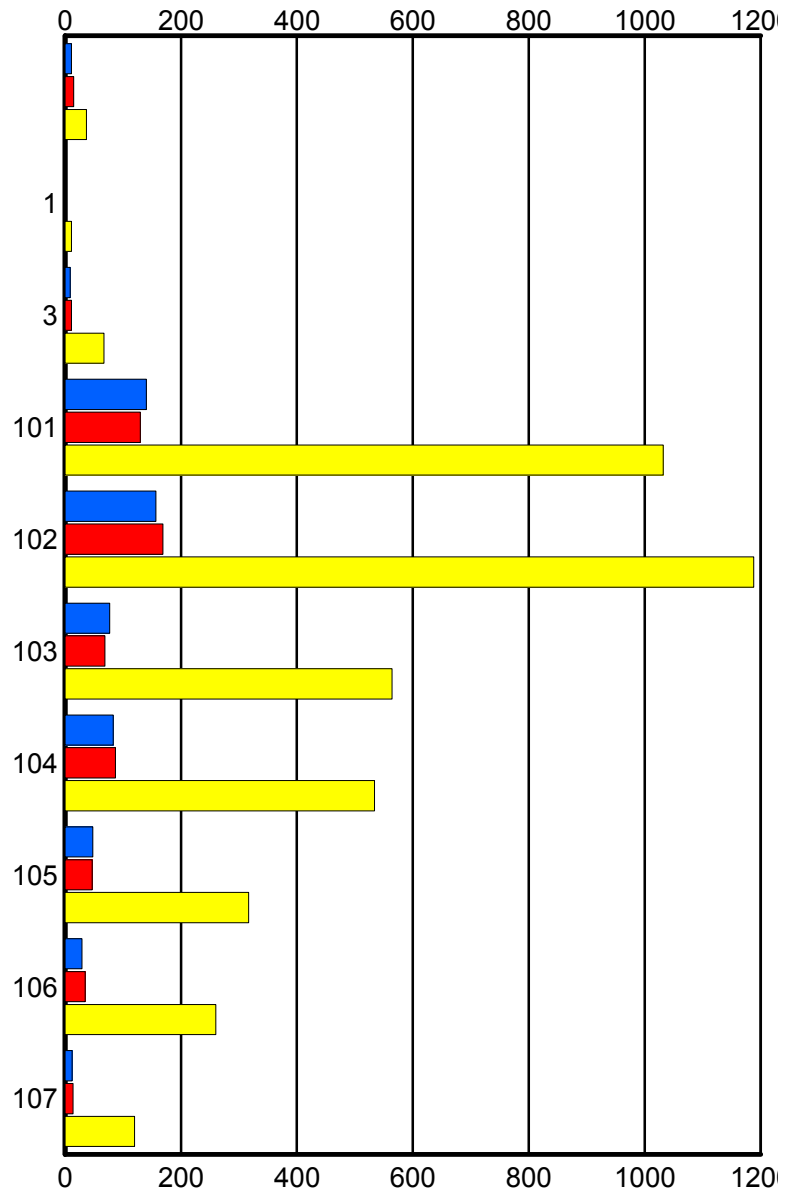
	Current We	Last Week	YTD
B13	1	0	1
	1	0	1
	1	0	1
B14	6	0	10
	6	0	10
	6	0	10
P51	18	38	162
	18	39	163
	20	40	171
P52	85	19	334
	86	19	337
	94	20	361
P53	128	94	781
	128	97	789
	133	100	835
P54	131	133	953
	133	134	969
	138	147	1,023
P55	43	84	492
	43	89	499
	46	91	519
P56	74	88	642
	76	88	650
	81	95	696
P57	47	86	517
	47	86	528
	49	94	554
P58	25	14	126
	25	14	126
	26	15	139
P60	0	0	1
	0	0	1
	0	0	1

### Road Ranger / SIRV Performance By Beat

	Current We	Last Week	YTD
	11	15	37
	11	15	37
	11	19	41
1	0	0	10
	0	0	11
	0	0	11
3	9	11	66
	9	11	67
	9	12	72
101	138	127	1,013
	140	130	1,032
	145	136	1,083
102	155	166	1,169
	157	169	1,188
	166	181	1,261
103	77	68	560
	77	69	564
	82	71	590
104	83	86	527
	83	87	534
	88	96	569
105	47	45	312
	48	47	317
	53	48	339
106	28	35	255
	29	35	260
	30	36	271
107	12	14	120
	12	14	120
	13	15	135

Values presented are:  
 - Total Events with a RR/SIRV Response  
 - Total RR/SIRV Responses,  
 - Total Activities Performed

### RR/SIRV Responses per Beat



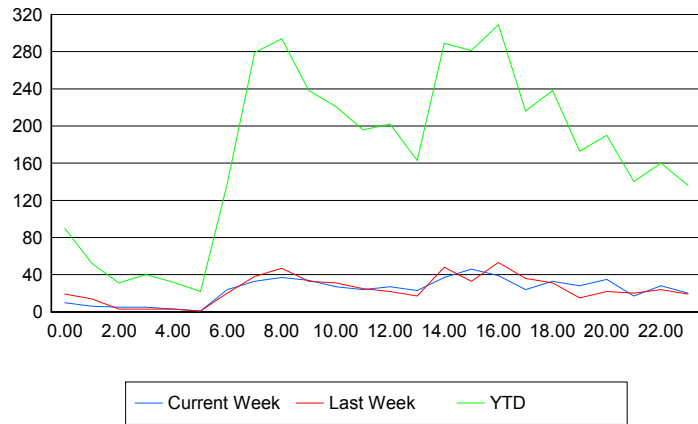
■ Current Week   
 ■ Last Week   
 ■ YTD

## Road Ranger / SIRV Performance By Time of Day

Values presented are:  
 - Total Events with a RR/SIRV Response  
 - Total RR/SIRV Responses,  
 - Total Activities Performed

	Current We	Last Week	YTD
12AM-1AM	10 10 10	18 19 20	88 90 97
1AM-2AM	6 6 6	13 14 14	51 52 53
2AM-3AM	5 5 6	3 3 3	30 31 33
3AM-4AM	5 5 6	3 3 3	40 40 43
4AM-5AM	3 3 3	3 3 3	32 32 36
5AM-6AM	1 1 1	1 1 1	16 22 23
6AM-7AM	23 24 24	19 20 20	128 138 147
7AM-8AM	33 33 34	38 38 42	274 279 296
8AM-9AM	35 37 38	45 47 51	279 294 310
9AM-10AM	33 34 35	32 33 40	232 238 253
10AM-11AM	27 27 29	29 31 35	214 221 234
11AM-12PM	24 24 28	24 25 26	190 196 210
12PM-1PM	25 27 28	21 22 24	193 202 211

## Number of Responses / Hour of the Day



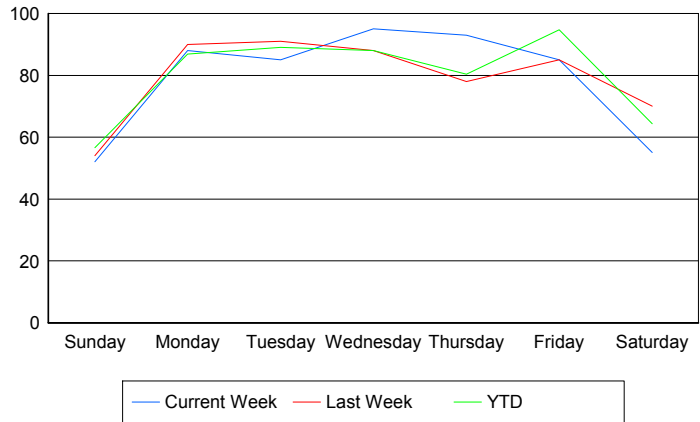
	Current We	Last Week	YTD
1PM-2PM	22	17	155
	23	17	163
	24	17	173
2PM-3PM	35	44	278
	37	48	289
	37	50	301
3PM-4PM	45	33	275
	46	33	281
	51	34	297
4PM-5PM	38	50	297
	39	53	309
	40	57	327
5PM-6PM	24	34	212
	24	36	216
	25	36	230
6PM-7PM	33	31	236
	33	31	238
	36	31	253
7PM-8PM	26	14	167
	28	15	173
	30	15	183
8PM-9PM	34	22	188
	35	22	190
	38	23	199
9PM-10PM	16	20	135
	17	20	140
	18	20	145
10PM-11PM	28	24	157
	28	24	160
	30	28	173
11PM-12AM	20	19	135
	20	19	136
	20	21	145

## Road Ranger / SIRV Performance By Day of Week

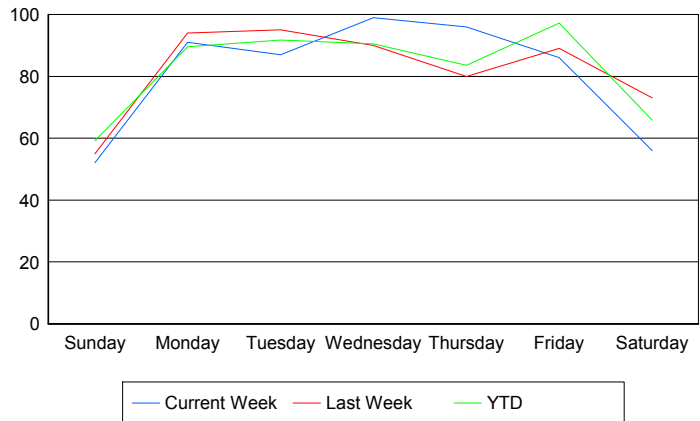
Values presented are:  
 - Total Events with a RR/SIRV Response  
 - Total RR/SIRV Responses,  
 - Total Activities Performed

	Current We	Last Week	YTD
Sunday	51	55	391
	51	56	407
	52	59	426
Monday	88	90	587
	91	94	605
	99	100	644
Tuesday	85	91	620
	87	95	639
	89	104	671
Wednesday	95	88	609
	99	90	625
	107	99	672
Thursday	93	78	559
	96	80	581
	99	85	625
Friday	85	85	731
	86	89	751
	91	91	786
Saturday	55	70	510
	56	73	522
	60	76	548

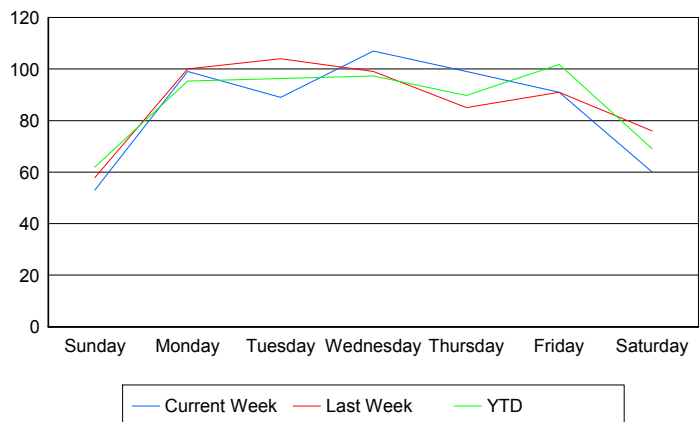
### Avg # of events with a RR/SIRV Response per Day of the Week



### Avg # of RR/SIRV Responses per Day of the Week



### Avg # of RR/SIRV Activities Performed per Day of the Week



### Road Ranger / SIRV Responses per Time of Day and Day of Week

