



# Weekly Performance Measures Report Palm Beach County



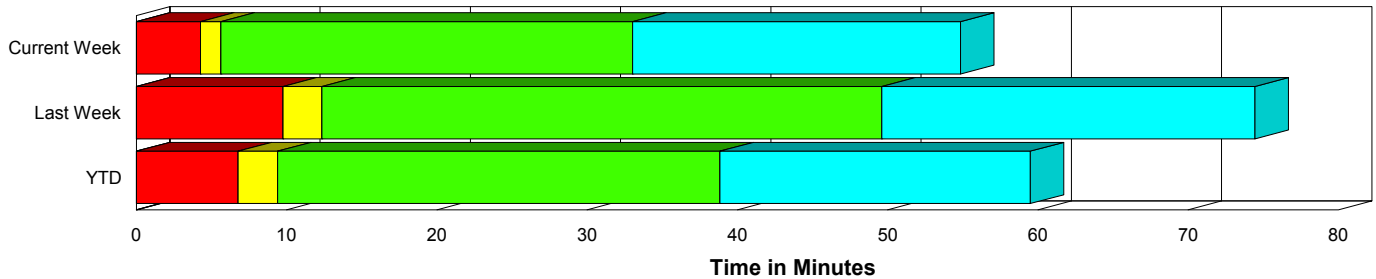
Period From Feb 7, 2010 to Feb 13, 2010

Created on:  
February 15, 2010  
8:52 am

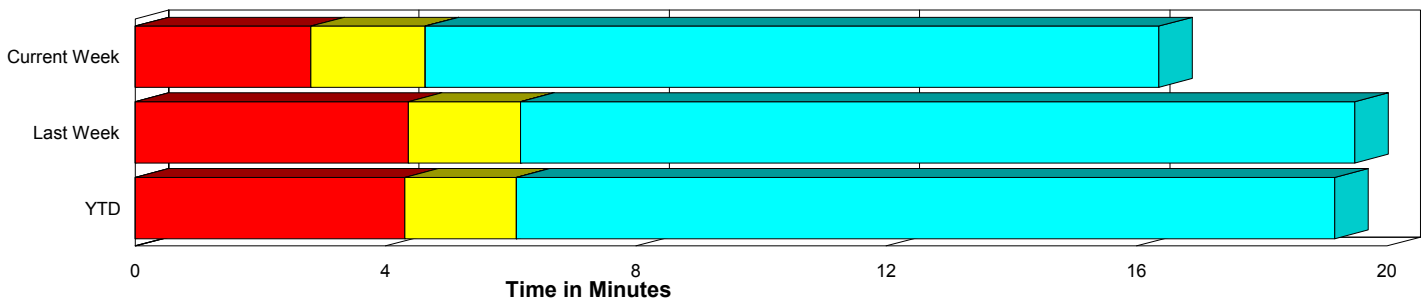
## Performance Measures Summary

	Traffic Events (No Lanes Blocked)			Incidents (Lanes Blocked)		
	<u>This Week</u>	<u>Last Week</u>	<u>YTD</u>	<u>This Week</u>	<u>Last Week</u>	<u>YTD</u>
Number of Events	440	426	2,587	21	32	143
TMC Detection (min.)	0.00	0.00	0.00	0.00	0.00	0.00
TMC Verification (min.)	2.81	4.37	4.31	4.27	9.77	6.77
TMC Response (min.)	4.99	6.60	6.41	5.63	12.66	9.56
RR Dispatch Time (min.)	1.35	2.12	2.31	0.74	3.23	1.95
RR Response Time (min.)	3.74	4.59	4.14	4.89	9.43	7.61
Roadway Clearance (min.)				33.03	48.74	39.58
Event Clearance (min.)	16.71	19.93	19.48	54.84	73.56	60.21
# of Events w/ RR/SIRV	413	399	2,486	21	31	140
RR/SIRV Responses	413	399	2,486	21	31	140
RR/SIRV Activities	435	419	2,646	25	45	181

### Incident Clearance Time-Line



### Traffic Event (Non-Lane Blockage) Time-Line



<span style="color: blue;">■</span> Avg. TMC Detection Time	<span style="color: green;">■</span> Avg. Time from TMC Response to Roadway Clearance*
<span style="color: red;">■</span> Avg. Time from TMC Detection to TMC Verification	<span style="color: cyan;">■</span> Avg. Time from Roadway Clearance to Incident/Event Clearance**
<span style="color: yellow;">■</span> Avg. Time from TMC Verification to TMC Response	

\* Roadway clearance equals all travel lanes open

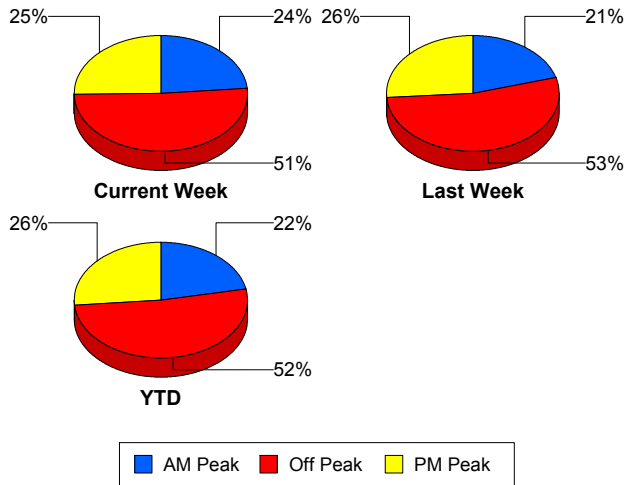
\*\* Incident clearance equals time when last responder has left the scene

## Performance Measures by Peak Period

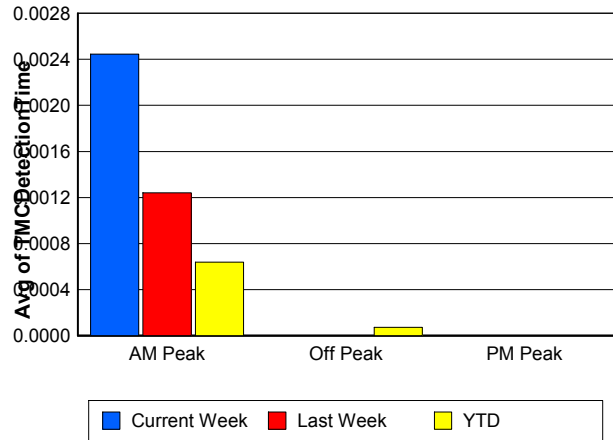
Note: AM peak period is defined as 6am to 10am and PM peak period is defined as 3pm to 7pm.

	AM Peak			Off Peak			PM Peak		
	<u>Current Week</u>	<u>Last Week</u>	<u>YTD</u>	<u>Current Week</u>	<u>Last Week</u>	<u>YTD</u>	<u>Current Week</u>	<u>Last Week</u>	<u>YTD</u>
Number of Events	109	94	600	236	244	1,408	116	120	722
Number of Incidents	3	10	39	9	15	65	9	7	39
TMC Detection (min.)	0.00	0.00	0.00	0.00	0.00	0.00	0.00	0.00	0.00
TMC Verification (min.)	1.49	2.63	3.20	2.52	5.53	4.71	4.92	4.84	4.95
TMC Response (min.)	4.11	5.46	5.51	4.98	7.75	7.30	5.87	6.95	6.06
RR Dispatch Time (min.)	0.82	1.79	1.16	1.46	1.93	2.92	1.50	3.03	1.98
RR Response Time (min.)	3.56	3.64	4.39	3.60	6.03	4.44	4.38	3.93	4.07
Event Clearance (min.)	17.65	29.77	21.67	18.48	23.28	22.41	19.15	19.72	20.03
Roadway Clearance (min.)	40.16	49.18	42.19	38.13	49.83	40.79	25.56	45.79	34.96
Incident Clearance (min.)	92.54	99.14	72.98	49.69	63.95	57.83	47.43	57.59	51.43
# of Events w/ RR/SIRV	98	88	572	224	225	1,355	112	117	699
RR/SIRV Responses	98	88	572	224	225	1,355	112	117	699
RR/SIRV Activities	111	99	623	230	239	1,449	119	126	755

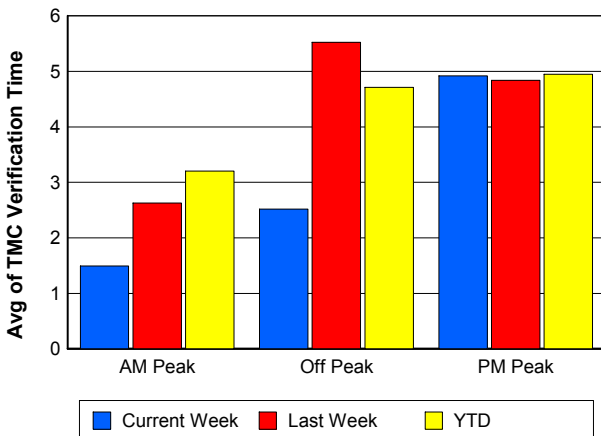
### Number of Events / Peak Period



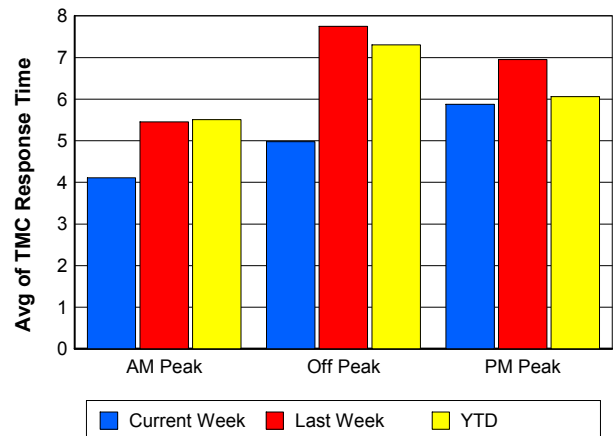
### TMC Detection Time



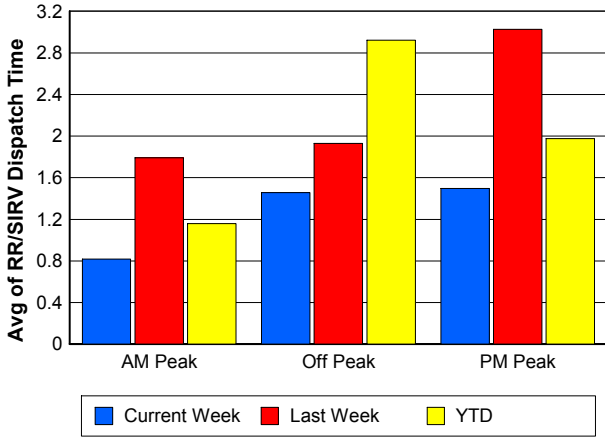
### TMC Verification Time



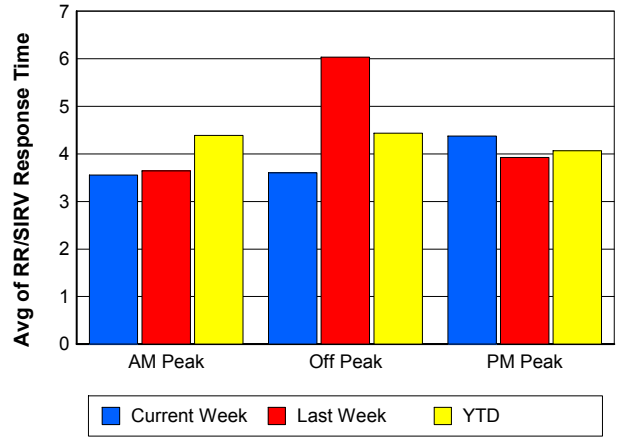
### TMC Response Time



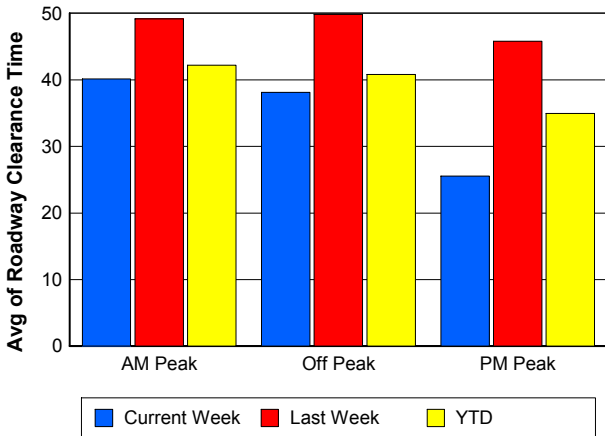
### Road Ranger / SIRV Dispatch Time



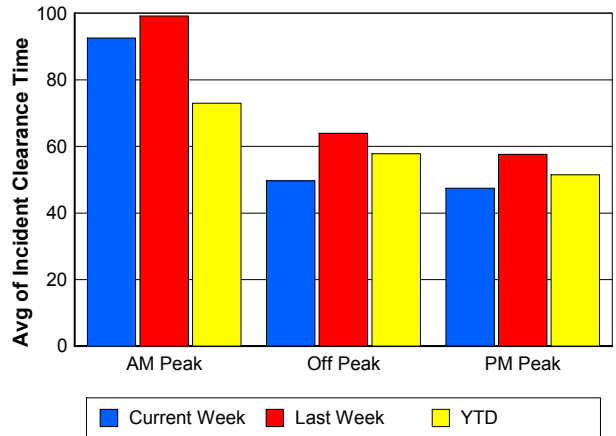
### Road Ranger / SIRV Response Time



### Roadway Clearance Time (2A)



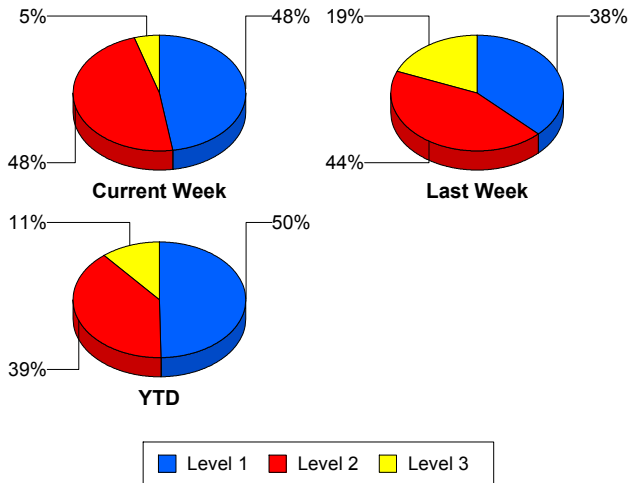
### Incident Clearance Time (3B)



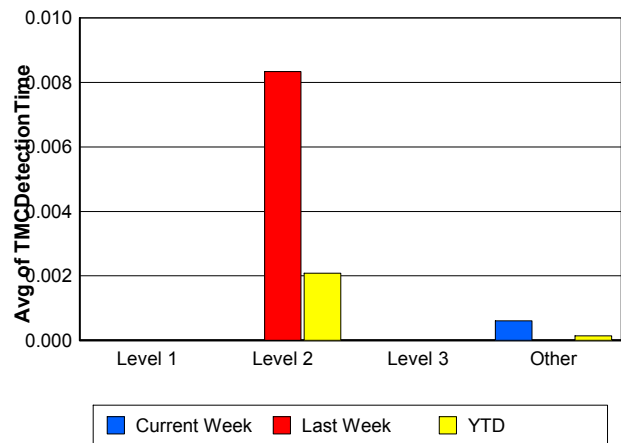
## Performance Measures by Severity

	Level 1			Level 2			Level 3			Other		
	<u>This Week</u>	<u>Last Week</u>	<u>YTD</u>	<u>This Week</u>	<u>Last Week</u>	<u>YTD</u>	<u>This Week</u>	<u>Last Week</u>	<u>YTD</u>	<u>This Week</u>	<u>Last Week</u>	<u>YTD</u>
Number of Events	10	12	71	10	14	56	1	6	16	440	426	2,587
Number of Incidents	10	12	71	10	14	56	1	6	16	0	0	0
TMC Detection (min.)	0.00	0.00	0.00	0.00	0.01	0.00	0.00	0.00	0.00	0.00	0.00	0.00
TMC Verification (min.)	4.54	3.87	3.57	4.42	16.23	11.32	0.00	6.50	5.05	2.81	4.37	4.31
TMC Response (min.)	5.36	6.85	5.65	4.75	19.36	14.52	17.17	7.85	9.00	4.99	6.60	6.41
RR Dispatch Time (min.)	0.42	0.56	0.73	0.94	5.31	3.42	2.05	3.84	2.15	1.35	2.12	2.31
RR Resp. Time (min.)	4.94	6.29	4.92	3.81	14.05	11.10	15.12	4.02	6.85	3.74	4.59	4.14
Event Clearance (min.)	47.29	62.63	45.67	59.39	79.12	68.67	84.88	82.43	95.18	16.71	19.93	19.48
Roadway Clear. (min.)	13.93	17.02	15.84	48.62	68.27	57.66	68.10	66.59	81.66			
Incident Clearance (min.)	47.29	62.63	45.67	59.39	79.12	68.67	84.88	82.43	95.18			
# of Events w/ RR/SIRV	10	12	70	10	14	56	1	5	14	413	399	2,486
RR/SIRV Responses	10	12	70	10	14	56	1	5	14	413	399	2,486
RR/SIRV Activities	11	15	81	12	24	80	2	6	20	435	419	2,646

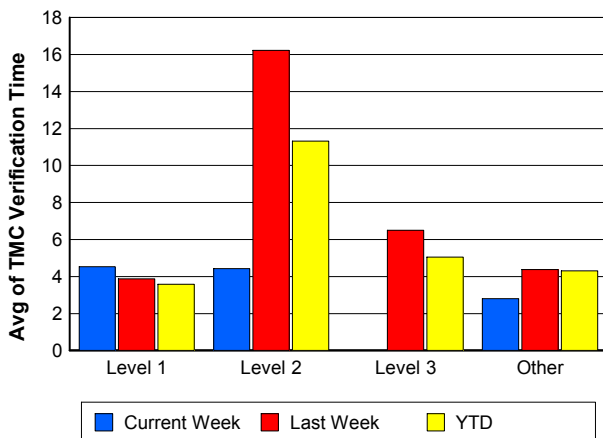
### Number of Events / Severity



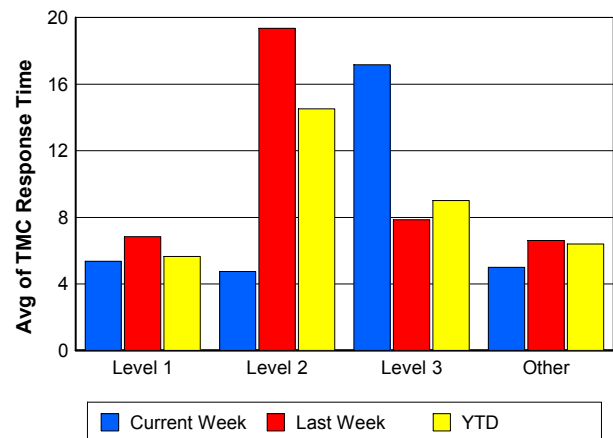
### TMC Detection Time



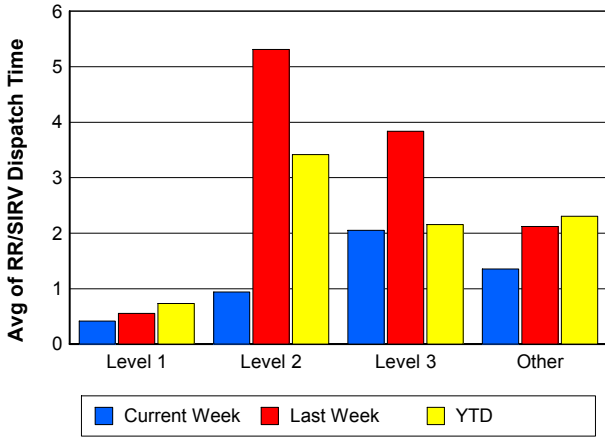
### TMC Verification Time



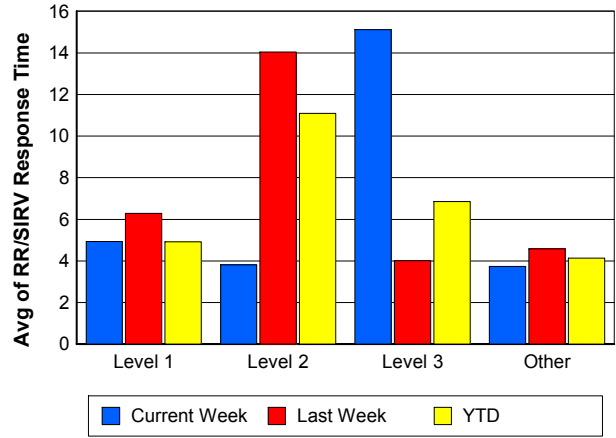
### TMC Response Time



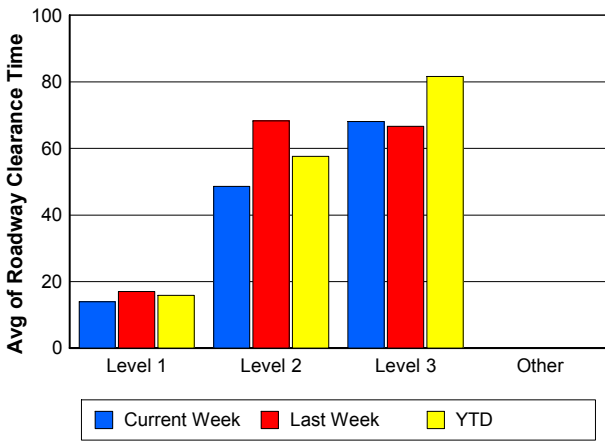
### Road Ranger / SIRV Dispatch Time



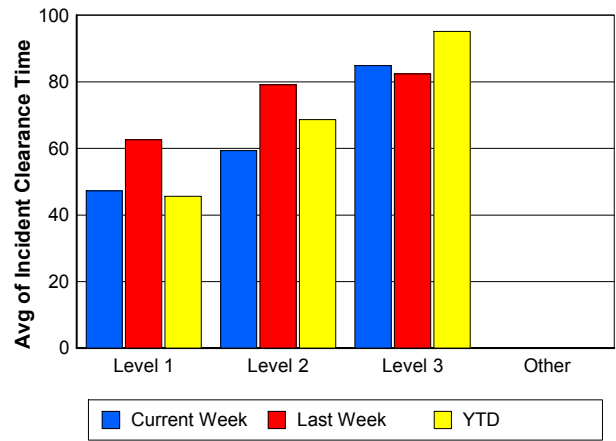
### Road Ranger / SIRV Response Time



### Roadway Clearance Time (2A)



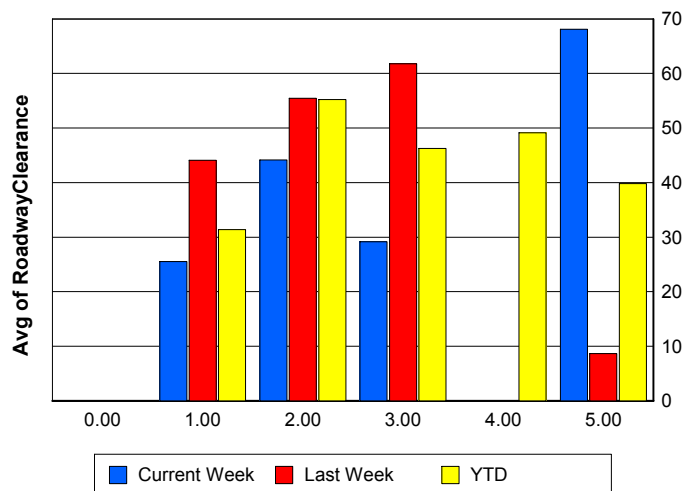
### Incident Clearance Time (3B)



### Roadway Clearance by Maximum Number of Lanes Blocked

	Current Week	Last Week	YTD
0			
1	25.49	44.09	31.39
2	44.16	55.43	55.22
3	29.15	61.80	46.28
4	0.00	0.00	49.11
5	68.10	8.63	39.83

### Roadway Clearance Time (2A)



## Performance Measures by Roadway

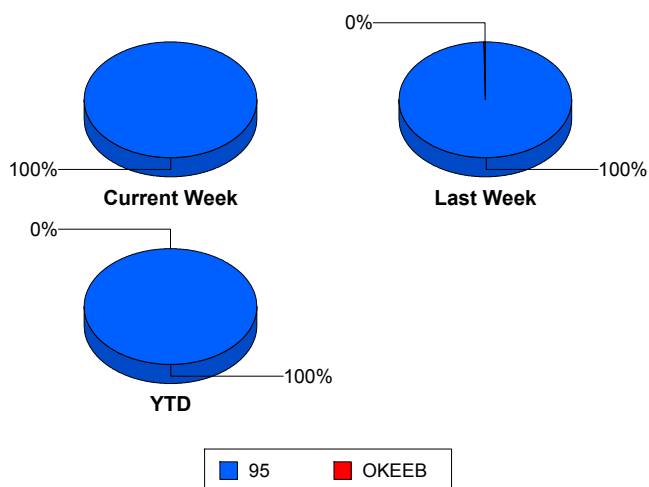
95

	<u>Current Week</u>	<u>Last Week</u>	<u>YTD</u>
Number of Events	461	457	2,729
Number of Incidents	21	32	143
TMC Detection (min.)	0.00	0.00	0.00
TMC Verification (min.)	2.88	4.76	4.44
TMC Response (min.)	5.02	7.07	6.58
RR Dispatch Time (min.)	1.32	2.20	2.29
RR Resp. Time (min.)	3.80	4.96	4.33
Event Clearance (min.)	18.45	23.69	21.62
Roadway Clear. (min.)	33.03	48.74	39.58
Incident Clearance (min.)	54.84	73.56	60.21
# of Events w/ RR/SIRV	434	429	2,625
RR/SIRV Responses	434	429	2,625
RR/SIRV Activities	460	463	2,826

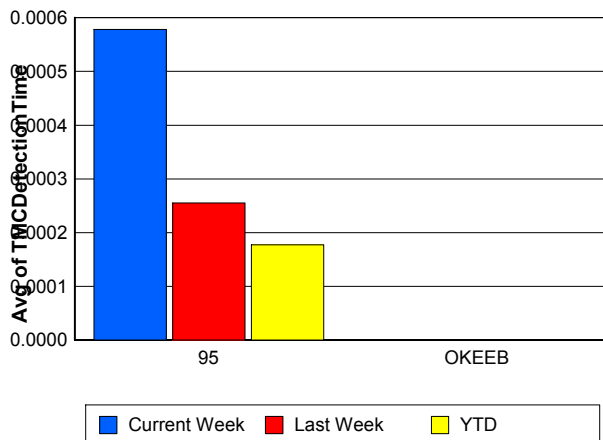
OKEEB

	<u>Last Week</u>	<u>YTD</u>
Number of Events	1	1
Number of Incidents	0	0
TMC Detection (min.)	0.00	0.00
TMC Verification (min.)	0.00	0.00
TMC Response (min.)	0.00	0.00
RR Dispatch Time (min.)	0.00	0.00
RR Resp. Time (min.)	0.00	0.00
Event Clearance (min.)	18.45	18.45
Roadway Clear. (min.)		
Incident Clearance (min.)		
# of Events w/ RR/SIRV	1	1
RR/SIRV Responses	1	1
RR/SIRV Activities	1	1

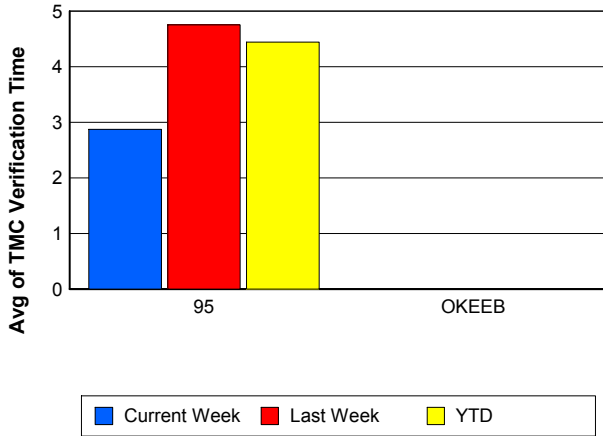
### Number of Events / Roadway



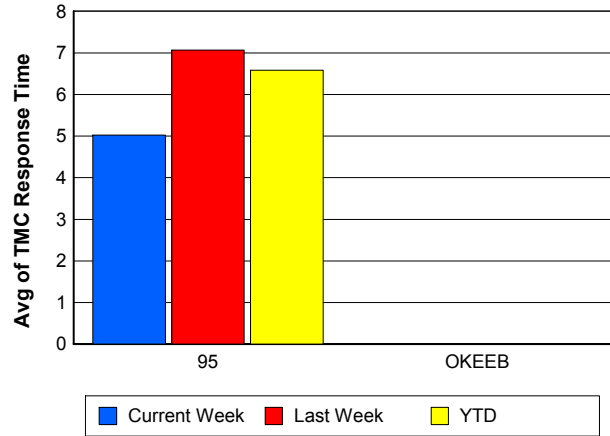
### TMC Detection Time



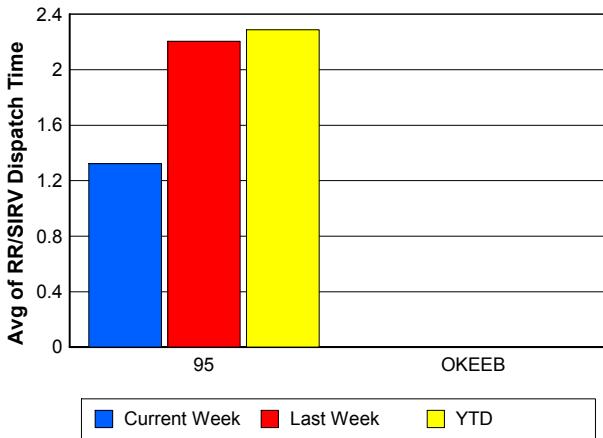
### TMC Verification Time



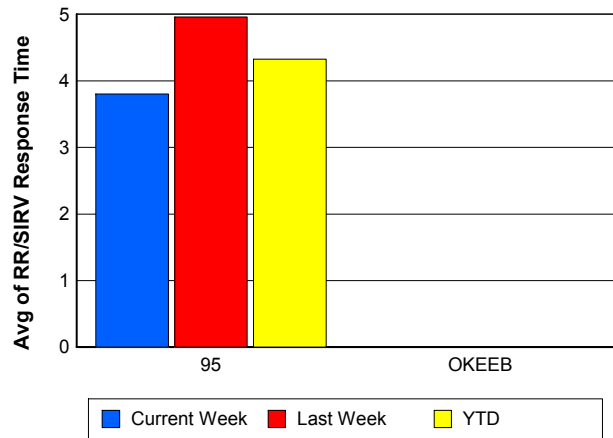
### TMC Response Time



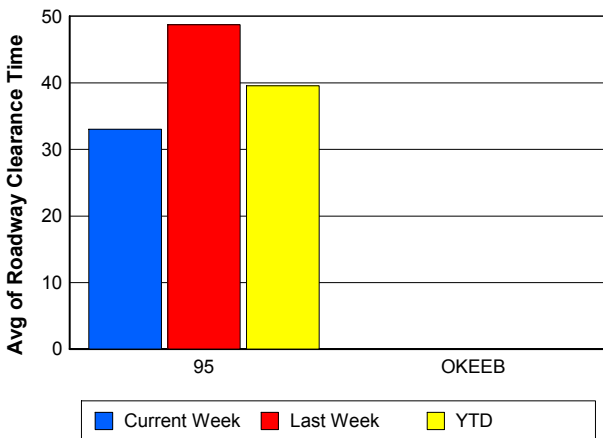
### Road Ranger / SIRV Dispatch Time



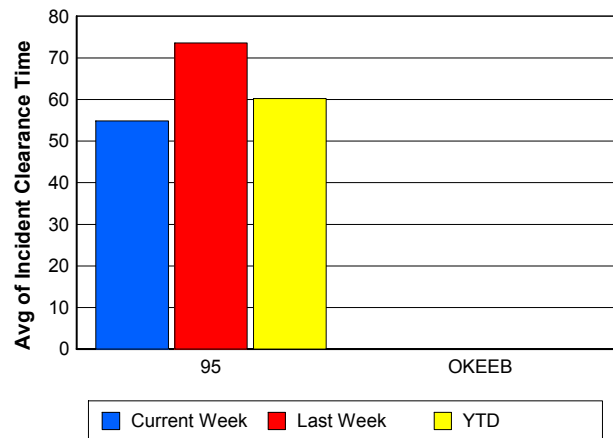
### Road Ranger / SIRV Response Time



### Roadway Clearance Time (2A)



### Incident Clearance Time (3B)



## Performance Measures by Event Type

### Accident

	<u>Current Week</u>	<u>Last Week</u>	<u>YTD</u>
Number of Events	34	62	233
Number of Incidents	15	26	101
TMC Detection (min.)	0.01	0.00	0.00
TMC Verification (min.)	5.61	7.47	7.67
TMC Response (min.)	7.17	11.86	10.40
RR Dispatch Time (min.)	1.07	2.51	2.04
RR Response Time (min.)	6.10	9.42	8.37
Event Clearance (min.)	55.48	55.75	55.78
Roadway Clearance (min.)	35.86	45.75	41.44
Incident Clearance (min.)	63.99	75.29	67.53
# of Events w/ RR/SIRV	34	59	227
RR/SIRV Assists	34	59	227
RR/SIRV Activities	39	72	266

### Debris on Roadway

	<u>Current Week</u>	<u>Last Week</u>	<u>YTD</u>
Number of Events	15	35	159
Number of Incidents	0	0	3
TMC Detection (min.)	0.00	0.00	0.00
TMC Verification (min.)	3.71	14.97	8.43
TMC Response (min.)	3.70	14.94	8.53
RR Dispatch Time (min.)	0.38	5.96	2.83
RR Response Time (min.)	3.31	8.97	5.68
Event Clearance (min.)	7.67	17.75	11.71
Roadway Clearance (min.)			6.66
Incident Clearance (min.)			16.98
# of Events w/ RR/SIRV	15	35	157
RR/SIRV Assists	15	35	157
RR/SIRV Activities	15	36	158

### Disabled Vehicle

	<u>Current Week</u>	<u>Last Week</u>	<u>YTD</u>
Number of Events	385	336	2,199
Number of Incidents	5	4	30
TMC Detection (min.)	0.00	0.00	0.00
TMC Verification (min.)	2.80	3.53	4.06
TMC Response (min.)	4.76	5.21	5.89
RR Dispatch Time (min.)	1.37	1.71	2.27
RR Response Time (min.)	3.50	3.64	3.67
Event Clearance (min.)	15.47	18.04	18.56
Roadway Clearance (min.)	28.99	80.11	34.13
Incident Clearance (min.)	30.96	83.44	42.01
# of Events w/ RR/SIRV	364	319	2,139
RR/SIRV Assists	364	319	2,139
RR/SIRV Activities	389	344	2,328

## Emergency Vehicles

	<u>YTD</u>
Number of Events	3
Number of Incidents	2
TMC Detection (min.)	0.00
TMC Verification (min.)	0.00
TMC Response (min.)	0.00
RR Dispatch Time (min.)	0.00
RR Response Time (min.)	0.00
Event Clearance (min.)	84.35
Roadway Clearance (min.)	114.12
Incident Clearance (min.)	114.93
# of Events w/ RR/SIRV	2
RR/SIRV Assists	2
RR/SIRV Activities	2

## Other

	<u>Current Week</u>	<u>Last Week</u>	<u>YTD</u>
Number of Events	22	19	110
Number of Incidents	0	0	0
TMC Detection (min.)	0.00	0.00	0.00
TMC Verification (min.)	0.00	0.00	0.38
TMC Response (min.)	8.88	10.83	11.31
RR Dispatch Time (min.)	1.66	2.91	2.57
RR Response Time (min.)	7.21	6.96	8.07
Event Clearance (min.)	19.20	29.94	21.36
Roadway Clearance (min.)			
Incident Clearance (min.)			
# of Events w/ RR/SIRV	17	13	79
RR/SIRV Assists	17	13	79
RR/SIRV Activities	13	9	52

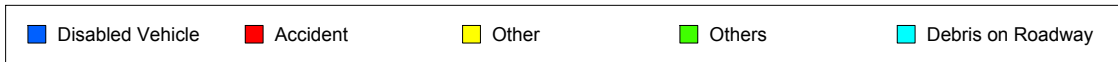
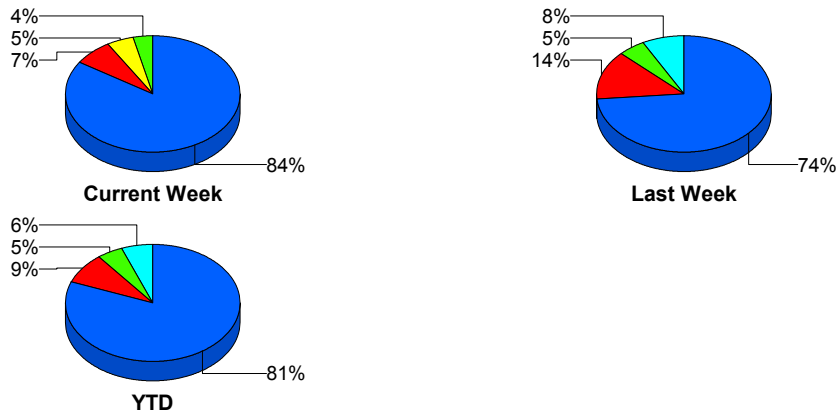
## Police Activity

	<u>Current Week</u>	<u>Last Week</u>	<u>YTD</u>
Number of Events	1	3	12
Number of Incidents	0	1	5
TMC Detection (min.)	0.00	0.00	0.00
TMC Verification (min.)	0.00	0.00	0.00
TMC Response (min.)			21.75
RR Dispatch Time (min.)		1.75	0.94
RR Response Time (min.)			20.96
Event Clearance (min.)	28.40	26.14	40.56
Roadway Clearance (min.)		11.72	30.78
Incident Clearance (min.)		15.80	33.02
# of Events w/ RR/SIRV	0	1	8
RR/SIRV Assists	0	1	8
RR/SIRV Activities	0	0	6

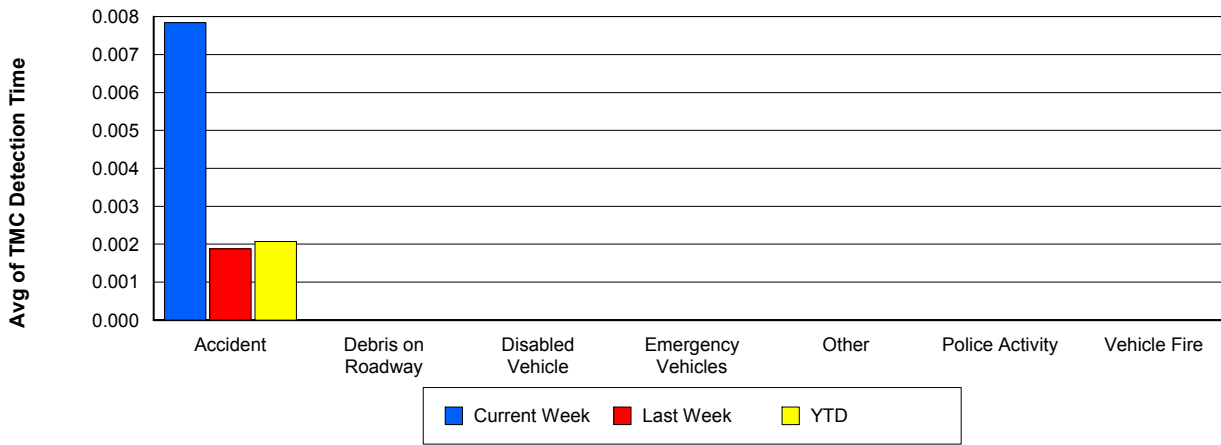
## Vehicle Fire

	<u>Current Week</u>	<u>Last Week</u>	<u>YTD</u>
Number of Events	1	2	5
Number of Incidents	1	1	2
TMC Detection (min.)	0.00	0.00	0.00
TMC Verification (min.)	0.00	0.00	3.83
TMC Response (min.)	0.00	2.37	4.77
RR Dispatch Time (min.)	0.00	1.46	1.72
RR Response Time (min.)	0.00	0.91	3.05
Event Clearance (min.)	36.98	29.09	28.39
Roadway Clearance (min.)	10.75	38.03	24.39
Incident Clearance (min.)	36.98	46.67	41.82
# of Events w/ RR/SIRV	1	2	5
RR/SIRV Assists	1	2	5
RR/SIRV Activities	1	2	5

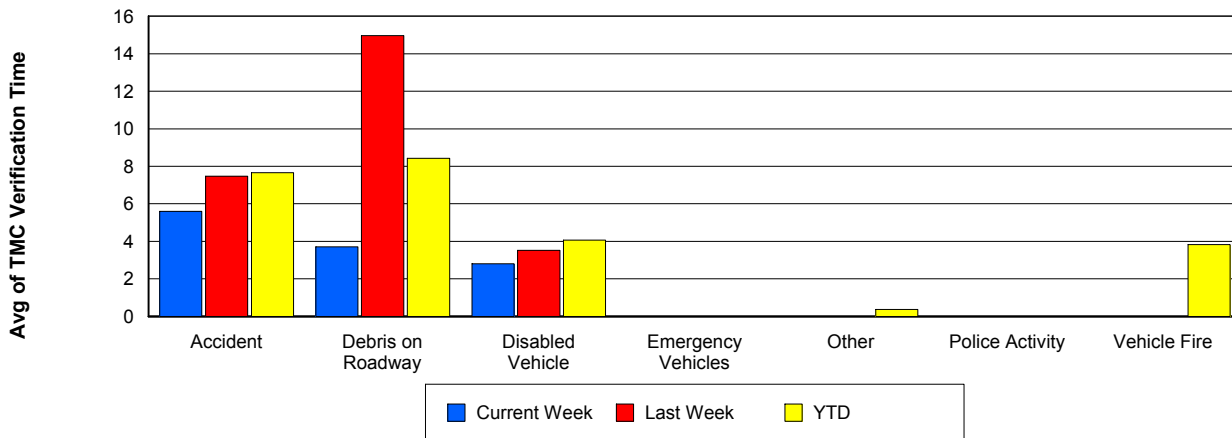
## Number of Events / Event Type



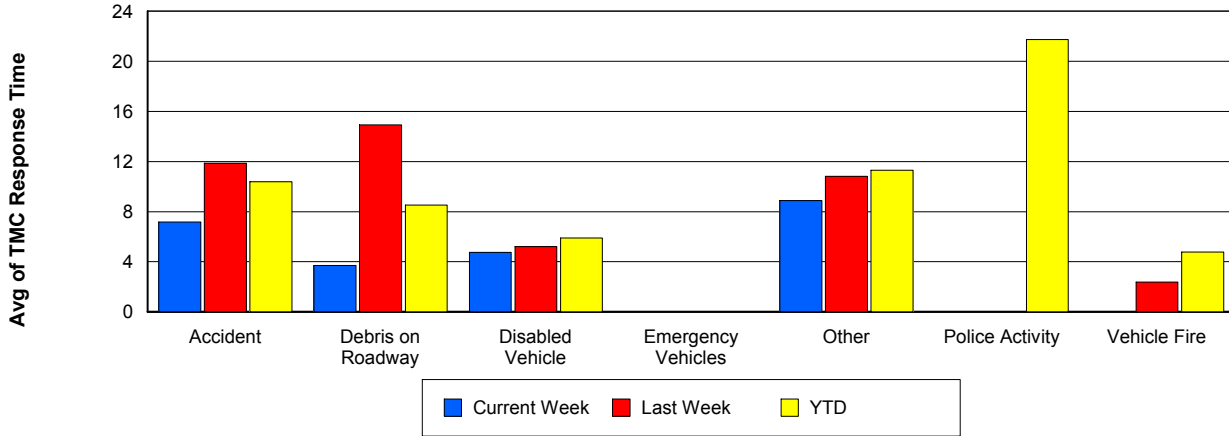
## TMC Detection Time



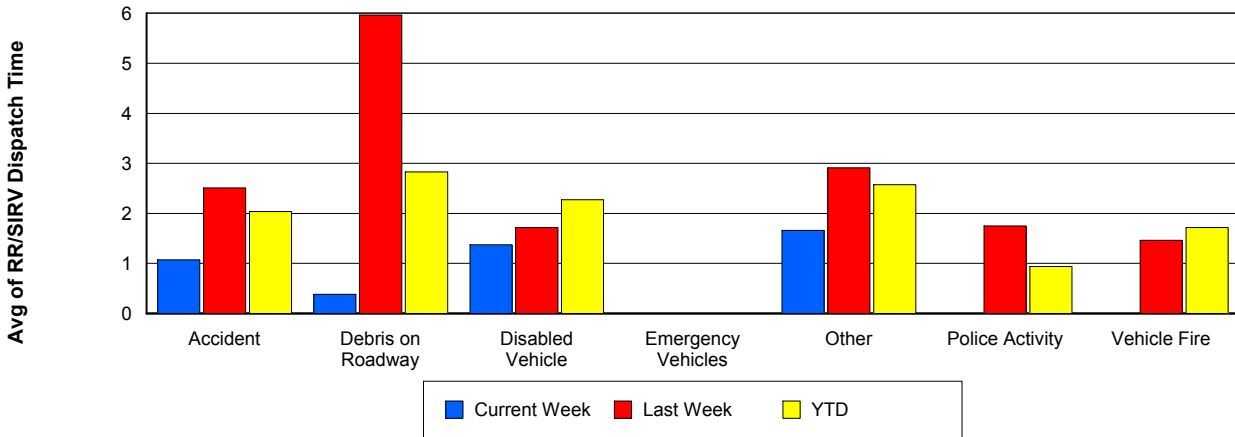
## TMC Verification Time



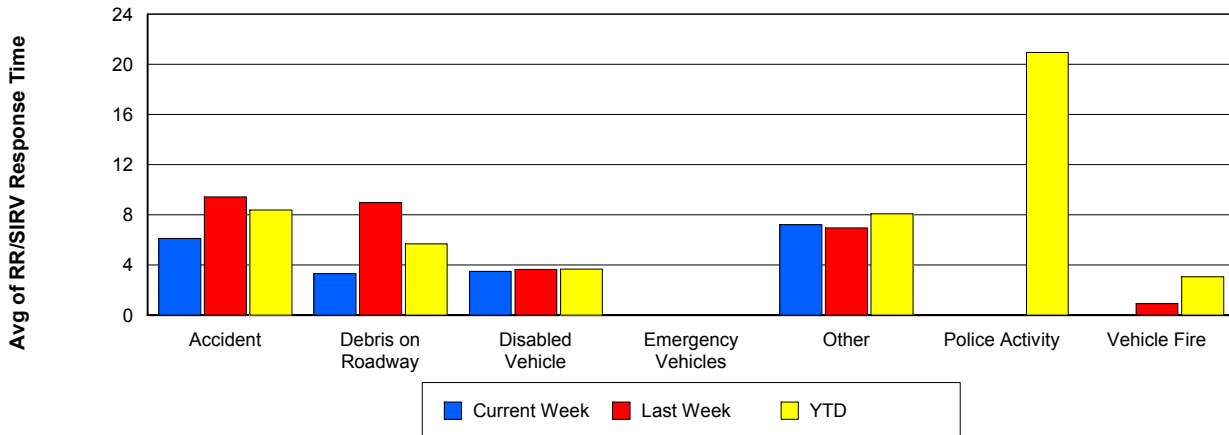
## TMC Response Time



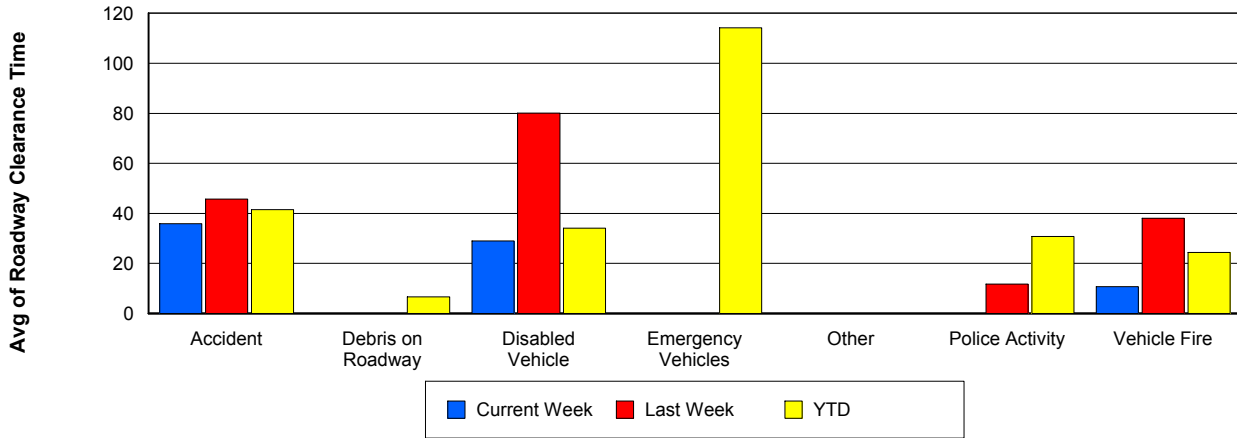
## Road Ranger / SIRV Dispatch Time



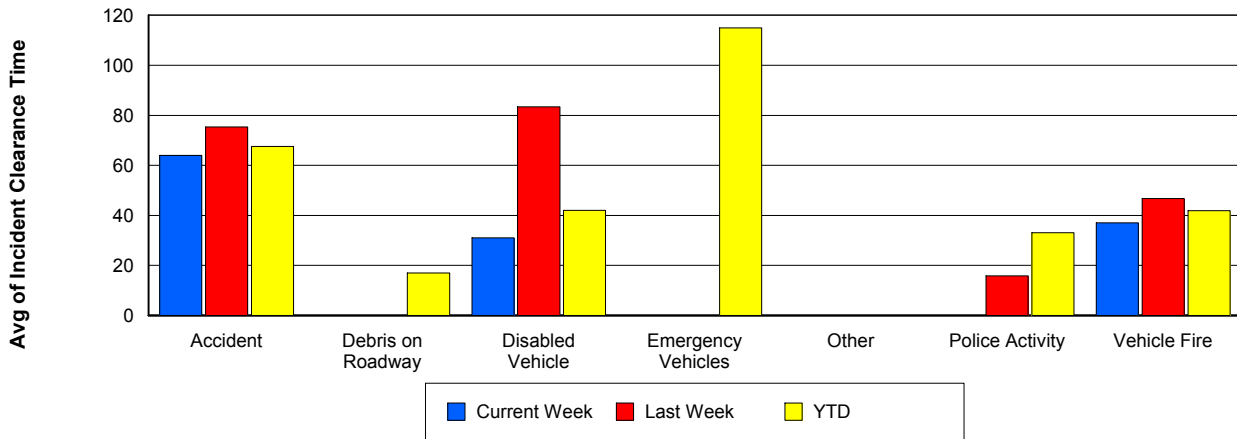
## Road Ranger / SIRV Response Time



## Roadway Clearance Time (2A)



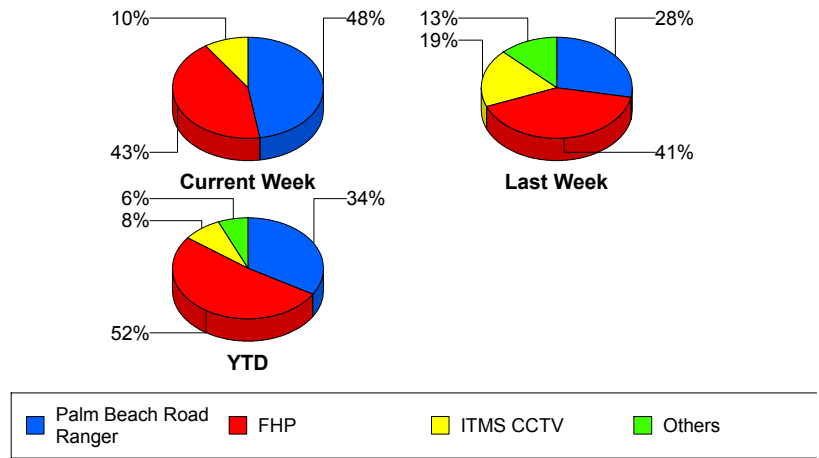
## Incident Clearance Time (3B)



## Incident Detection Methods

	Current Week	Last Week	YTD
Broward Road Ranger	0	0	2
Broward TMC	0	2	2
District 4	0	2	3
FHP	9	13	74
ITMS CCTV	2	6	12
Motorist	0	0	2
Palm Beach Road Ran	10	9	48
<b>Total</b>	<b>21</b>	<b>32</b>	<b>143</b>

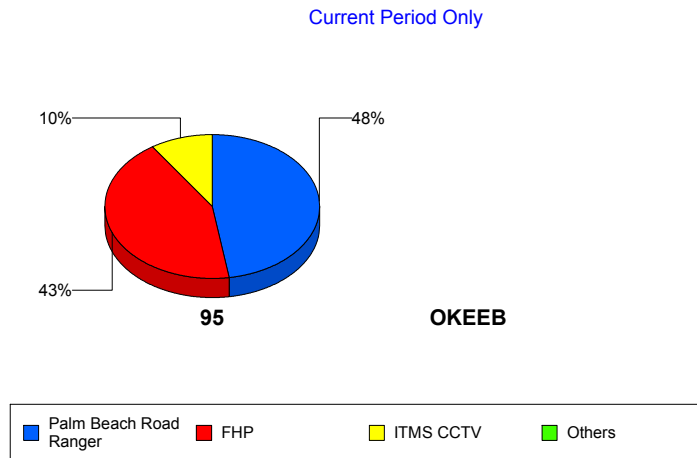
### Total Incidents by Detection Method



## Incident Detection Methods by Roadway

		Current Week	Last Week	YTD
95	Broward Road Ranger	0	0	2
	Broward TMC	0	2	2
	District 4	0	2	3
	FHP	9	13	74
	ITMS CCTV	2	6	12
	Motorist	0	0	2
	Palm Beach Road Ran	10	9	48
	<b>Total</b>	<b>21</b>	<b>32</b>	<b>143</b>
<b>Total</b>		<b>21</b>	<b>32</b>	<b>143</b>

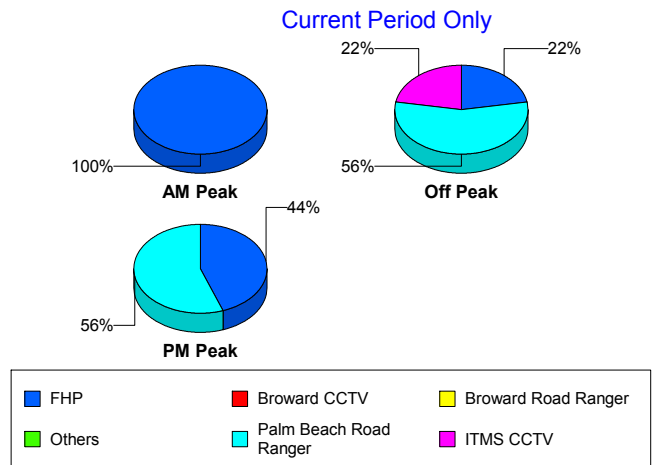
### Total Events by Roadway and Detection Method



## Incident Detection Methods by Peak Period

		Current Week	Last Week	YTD
AM Peak	Broward Road Ranger	0	0	1
	District 4	0	0	1
	FHP	3	1	20
	ITMS CCTV	0	4	4
	Palm Beach Road Ran	0	5	13
	<b>Total</b>	<b>3</b>	<b>10</b>	<b>39</b>
Off Peak	Broward Road Ranger	0	0	1
	Broward TMC	0	1	1
	District 4	0	1	1
	FHP	2	10	33
	ITMS CCTV	2	1	7
	Motorist	0	0	1
	Palm Beach Road Ran	5	2	21
	<b>Total</b>	<b>9</b>	<b>15</b>	<b>65</b>
PM Peak	Broward TMC	0	1	1
	District 4	0	1	1
	FHP	4	2	21
	ITMS CCTV	0	1	1
	Motorist	0	0	1
	Palm Beach Road Ran	5	2	14
	<b>Total</b>	<b>9</b>	<b>7</b>	<b>39</b>
<b>Total</b>	<b>21</b>	<b>32</b>	<b>143</b>	

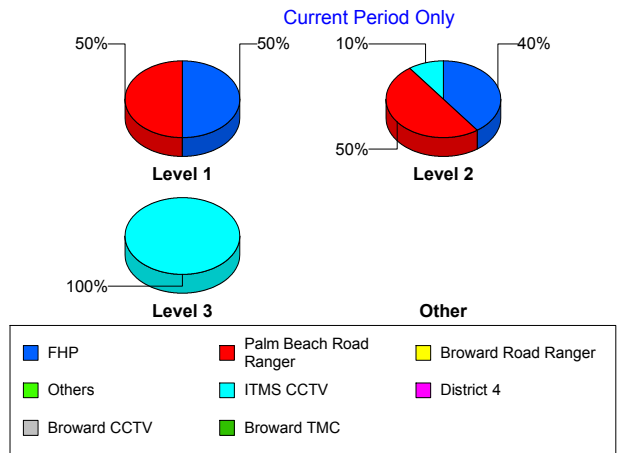
Total Events by Peak Period and Detection Method



## Incident Detection Methods by Severity

		Current Week	Last Week	YTD
Level 1	Broward Road Ranger	0	0	2
	District 4	0	1	2
	FHP	5	3	28
	ITMS CCTV	0	2	5
	Motorist	0	0	2
	Palm Beach Road Ran	5	6	32
	<b>Total</b>	<b>10</b>	<b>12</b>	<b>71</b>
Level 2	Broward TMC	0	2	2
	FHP	4	8	38
	ITMS CCTV	1	3	5
	Palm Beach Road Ran	5	1	11
	<b>Total</b>	<b>10</b>	<b>14</b>	<b>56</b>
Level 3	District 4	0	1	1
	FHP	0	2	8
	ITMS CCTV	1	1	2
	Palm Beach Road Ran	0	2	5
	<b>Total</b>	<b>1</b>	<b>6</b>	<b>16</b>
<b>Total</b>	<b>21</b>	<b>32</b>	<b>143</b>	

**Total Events by Severity and Detection Method**



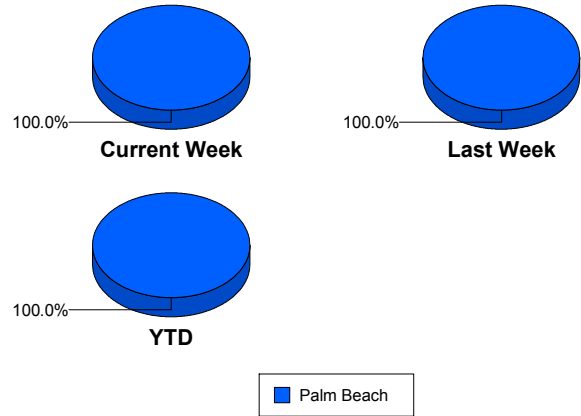
# Road Ranger / SIRV Performance Measures

## Road Ranger / SIRV Performance By County

Values presented are:  
 - Total Events with a RR/SIRV Response  
 - Total RR/SIRV Responses,  
 - Total Activities Performed

	Current We	Last Week	YTD
Palm Beach	557	553	3,451
	577	577	3,564
	614	603	3,775

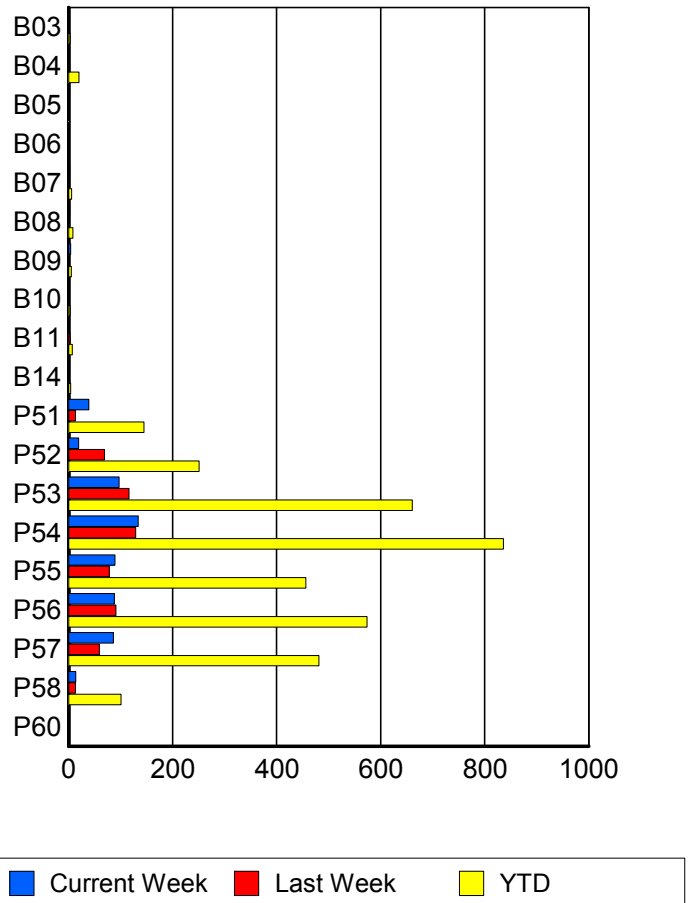
RR/SIRV Responses per County



## Road Ranger / SIRV Performance By Truck

	Current We	Last Week	YTD
B03	1	1	3
	1	1	3
	1	2	4
B04	2	2	20
	2	2	20
	2	2	21
B05	0	0	1
	0	0	1
	0	0	1
B06	0	0	1
	0	0	1
	0	0	3
B07	2	2	6
	2	2	6
	2	2	6
B08	2	1	8
	2	1	8
	2	1	8
B09	4	0	5
	4	0	5
	5	0	6
B10	0	0	3
	0	0	3
	0	0	3
B11	0	3	7
	0	3	7
	0	3	7

RR/SIRV Responses per Truck



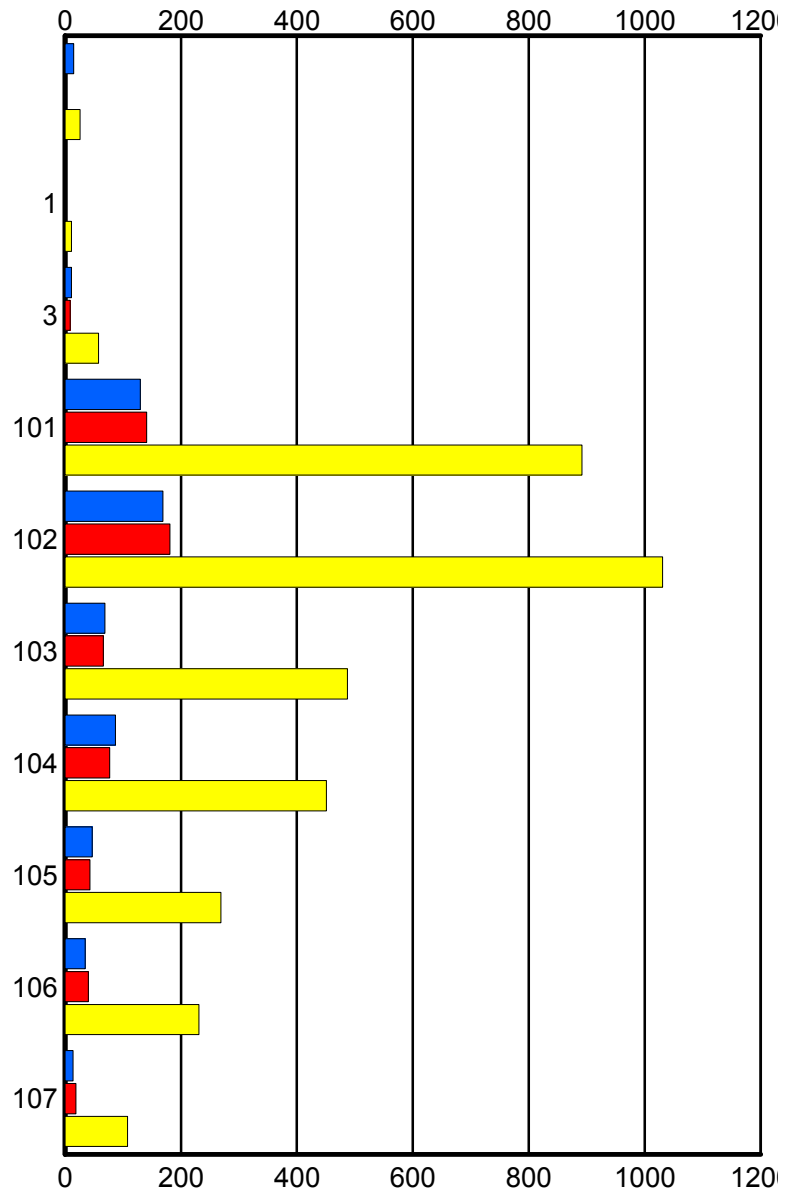
	Current We	Last Week	YTD
B14	0	0	4
	0	0	4
	0	0	4
P51	38	13	144
	39	13	145
	40	13	151
P52	19	69	249
	19	69	251
	20	73	267
P53	94	114	653
	97	116	661
	100	123	702
P54	133	126	822
	134	129	836
	147	138	885
P55	84	78	449
	89	78	456
	91	78	473
P56	88	90	568
	88	91	574
	95	95	615
P57	86	56	470
	86	59	481
	94	60	505
P58	14	13	101
	14	13	101
	15	13	113
P60	0	0	1
	0	0	1
	0	0	1

### Road Ranger / SIRV Performance By Beat

	Current We	Last Week	YTD
	15	1	26
	15	1	26
	19	1	30
1	0	0	10
	0	0	11
	0	0	11
3	11	9	57
	11	9	58
	12	10	63
101	127	134	875
	130	141	892
	136	146	938
102	166	180	1,014
	169	181	1,031
	181	190	1,095
103	68	66	483
	69	66	487
	71	69	508
104	86	75	444
	87	77	451
	96	82	481
105	45	43	265
	47	43	269
	48	45	286
106	35	40	227
	35	40	231
	36	41	241
107	14	19	108
	14	19	108
	15	19	122

Values presented are:  
 - Total Events with a RR/SIRV Response  
 - Total RR/SIRV Responses,  
 - Total Activities Performed

### RR/SIRV Responses per Beat



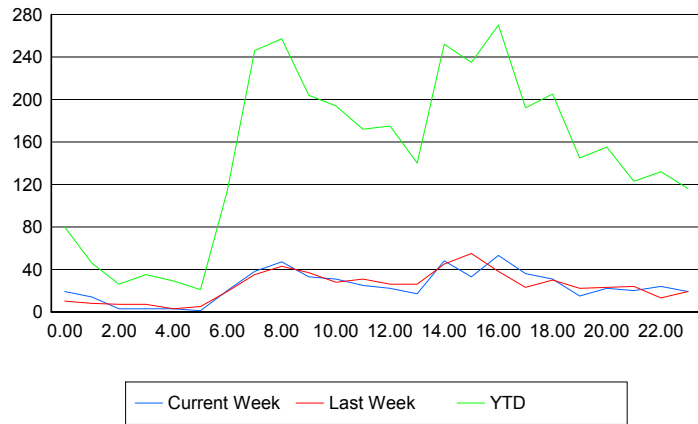
■ Current Week   
 ■ Last Week   
 ■ YTD

## Road Ranger / SIRV Performance By Time of Day

Values presented are:  
 - Total Events with a RR/SIRV Response  
 - Total RR/SIRV Responses,  
 - Total Activities Performed

	Current We	Last Week	YTD
12AM-1AM	18 19 20	10 10 10	78 80 87
1AM-2AM	13 14 14	8 8 8	45 46 47
2AM-3AM	3 3 3	6 7 8	25 26 27
3AM-4AM	3 3 3	7 7 7	35 35 37
4AM-5AM	3 3 3	3 3 4	29 29 33
5AM-6AM	1 1 1	2 5 5	15 21 22
6AM-7AM	19 20 20	16 19 22	105 114 123
7AM-8AM	38 38 42	34 35 36	241 246 262
8AM-9AM	45 47 51	38 43 44	244 257 272
9AM-10AM	32 33 40	37 37 38	199 204 218
10AM-11AM	29 31 35	28 28 28	187 194 205
11AM-12PM	24 25 26	30 31 35	166 172 182
12PM-1PM	21 22 24	24 26 27	168 175 183

## Number of Responses / Hour of the Day



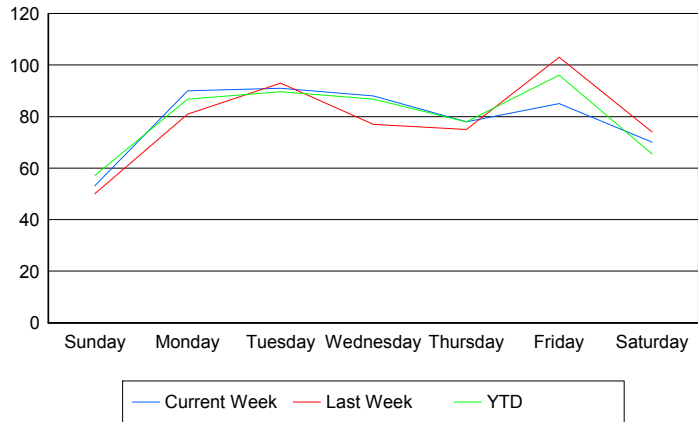
	Current We	Last Week	YTD
1PM-2PM	17	25	133
	17	26	140
	17	27	149
2PM-3PM	44	44	243
	48	45	252
	50	48	264
3PM-4PM	33	52	230
	33	55	235
	34	56	246
4PM-5PM	50	38	259
	53	38	270
	57	39	287
5PM-6PM	34	23	188
	36	23	192
	36	24	205
6PM-7PM	31	29	203
	31	30	205
	31	32	217
7PM-8PM	14	21	141
	15	22	145
	15	22	153
8PM-9PM	22	23	154
	22	23	155
	23	24	161
9PM-10PM	20	23	119
	20	24	123
	20	25	127
10PM-11PM	24	13	129
	24	13	132
	28	14	143
11PM-12AM	19	19	115
	19	19	116
	21	20	125

## Road Ranger / SIRV Performance By Day of Week

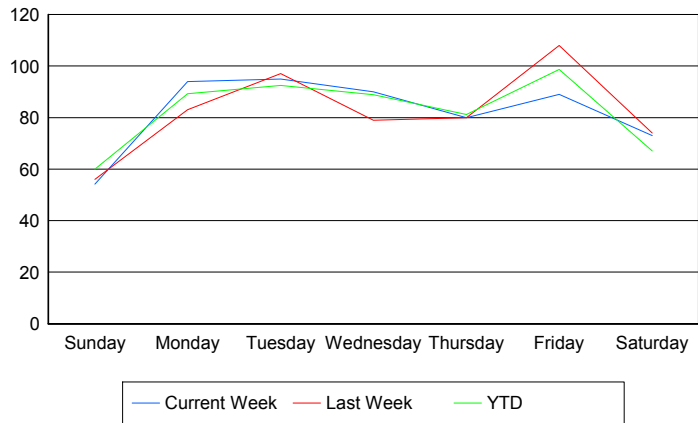
Values presented are:  
 - Total Events with a RR/SIRV Response  
 - Total RR/SIRV Responses,  
 - Total Activities Performed

	Current We	Last Week	YTD
Sunday	55	50	340
	56	56	356
	59	61	374
Monday	90	81	499
	94	83	514
	100	89	545
Tuesday	91	93	535
	95	97	552
	104	100	582
Wednesday	88	77	514
	90	79	526
	99	84	565
Thursday	78	75	466
	80	80	485
	85	82	526
Friday	85	103	646
	89	108	665
	91	109	695
Saturday	70	74	455
	73	74	466
	76	78	488

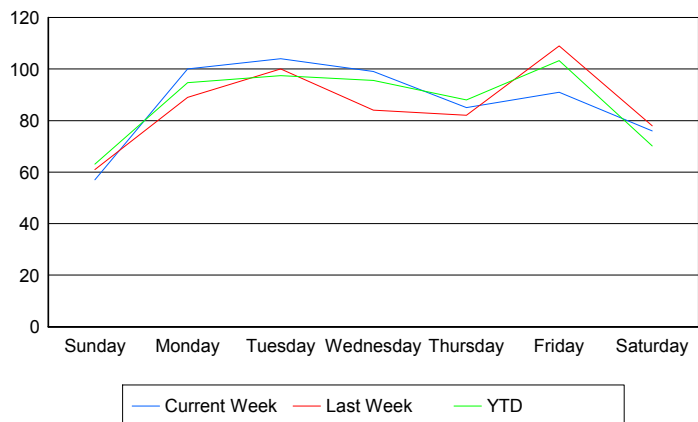
### Avg # of events with a RR/SIRV Response per Day of the Week



### Avg # of RR/SIRV Responses per Day of the Week



### Avg # of RR/SIRV Activities Performed per Day of the Week



### Road Ranger / SIRV Responses per Time of Day and Day of Week

