



Weekly Performance Measures Report Palm Beach County



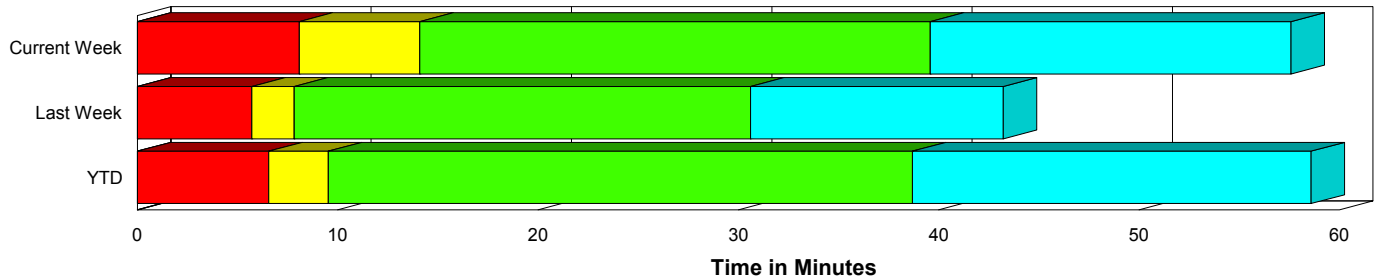
Created on:
January 26, 2010
8:59 am

Period From Jan 17, 2010 to Jan 23, 2010

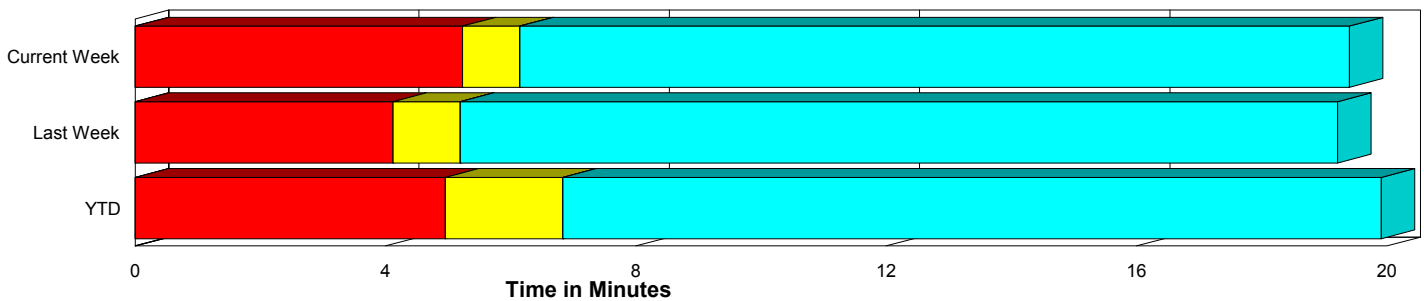
Performance Measures Summary

	Traffic Events (No Lanes Blocked)			Incidents (Lanes Blocked)		
	<u>This Week</u>	<u>Last Week</u>	<u>YTD</u>	<u>This Week</u>	<u>Last Week</u>	<u>YTD</u>
Number of Events	395	407	1,303	18	24	71
TMC Detection (min.)	0.00	0.00	0.00	0.00	0.00	0.00
TMC Verification (min.)	5.23	4.12	4.96	8.08	5.72	6.56
TMC Response (min.)	6.41	5.45	7.11	14.09	8.08	9.74
RR Dispatch Time (min.)	2.07	1.51	2.92	3.46	1.38	1.78
RR Response Time (min.)	4.43	3.93	4.19	10.63	6.70	7.96
Roadway Clearance (min.)				39.58	29.89	40.46
Event Clearance (min.)	19.66	19.46	20.18	57.57	42.46	60.33
# of Events w/ RR/SIRV	384	395	1,266	18	23	69
RR/SIRV Responses	384	395	1,266	18	23	69
RR/SIRV Activities	407	425	1,354	24	29	88

Incident Clearance Time-Line



Traffic Event (Non-Lane Blockage) Time-Line



■ Avg. TMC Detection Time	■ Avg. Time from TMC Response to Roadway Clearance*
■ Avg. Time from TMC Detection to TMC Verification	■ Avg. Time from Roadway Clearance to Incident/Event Clearance**
■ Avg. Time from TMC Verification to TMC Response	

* Roadway clearance equals all travel lanes open

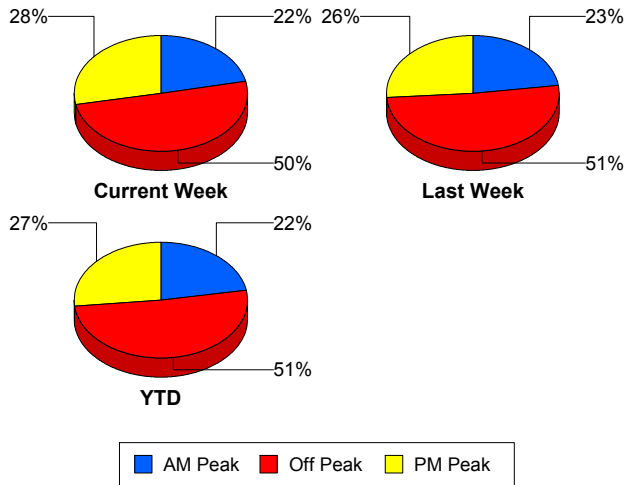
** Incident clearance equals time when last responder has left the scene

Performance Measures by Peak Period

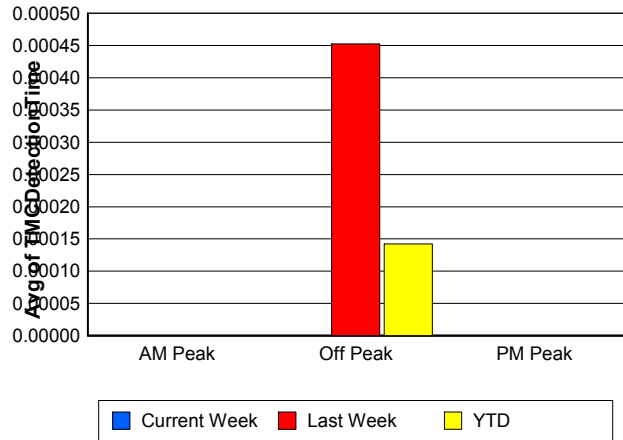
Note: AM peak period is defined as 6am to 10am and PM peak period is defined as 3pm to 7pm.

	AM Peak			Off Peak			PM Peak		
	<u>Current Week</u>	<u>Last Week</u>	<u>YTD</u>	<u>Current Week</u>	<u>Last Week</u>	<u>YTD</u>	<u>Current Week</u>	<u>Last Week</u>	<u>YTD</u>
Number of Events	90	98	304	207	221	703	116	112	367
Number of Incidents	5	10	22	12	6	32	1	8	17
TMC Detection (min.)	0.00	0.00	0.00	0.00	0.00	0.00	0.00	0.00	0.00
TMC Verification (min.)	4.68	3.54	3.49	5.48	4.36	5.52	5.66	4.50	5.40
TMC Response (min.)	6.08	5.82	5.53	7.36	5.66	8.58	6.22	5.28	6.07
RR Dispatch Time (min.)	1.16	0.96	1.06	2.73	1.73	4.11	1.80	1.50	1.96
RR Response Time (min.)	4.90	4.85	4.47	4.80	3.93	4.52	4.42	3.76	4.09
Event Clearance (min.)	17.60	19.19	19.97	23.43	22.24	23.98	20.43	19.13	20.86
Roadway Clearance (min.)	21.77	34.25	43.96	48.53	23.40	39.90	21.28	29.31	36.97
Incident Clearance (min.)	63.34	45.52	66.60	58.01	46.61	61.89	23.50	35.51	49.27
# of Events w/ RR/SIRV	89	94	295	203	214	684	110	110	356
RR/SIRV Responses	89	94	295	203	214	684	110	110	356
RR/SIRV Activities	94	98	314	218	235	740	119	121	388

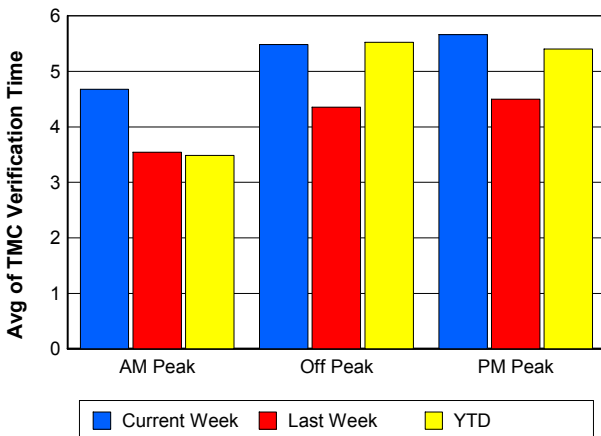
Number of Events / Peak Period



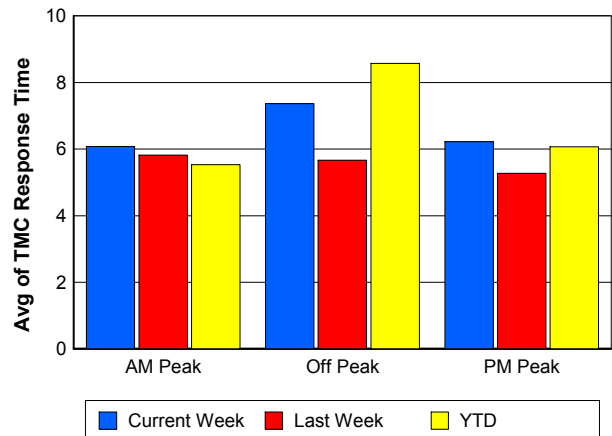
TMC Detection Time



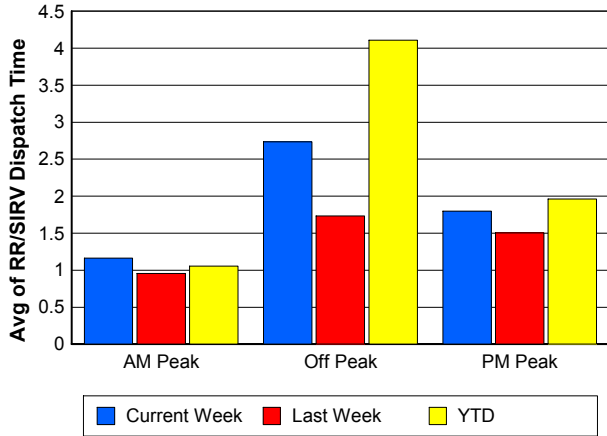
TMC Verification Time



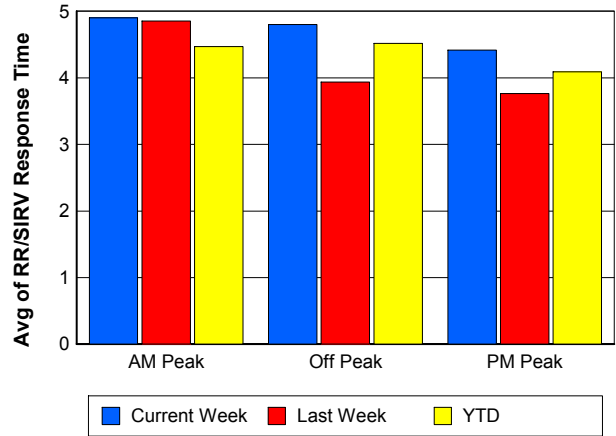
TMC Response Time



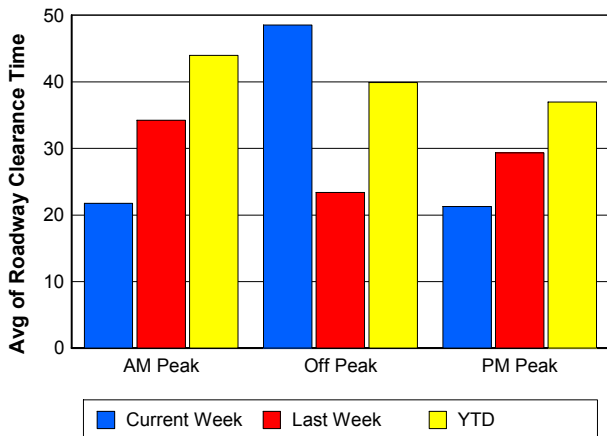
Road Ranger / SIRV Dispatch Time



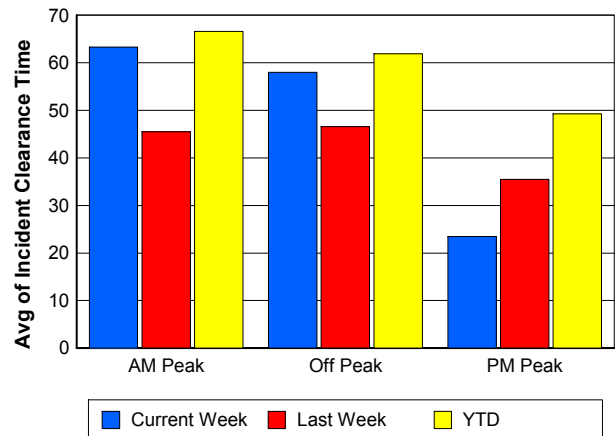
Road Ranger / SIRV Response Time



Roadway Clearance Time (2A)



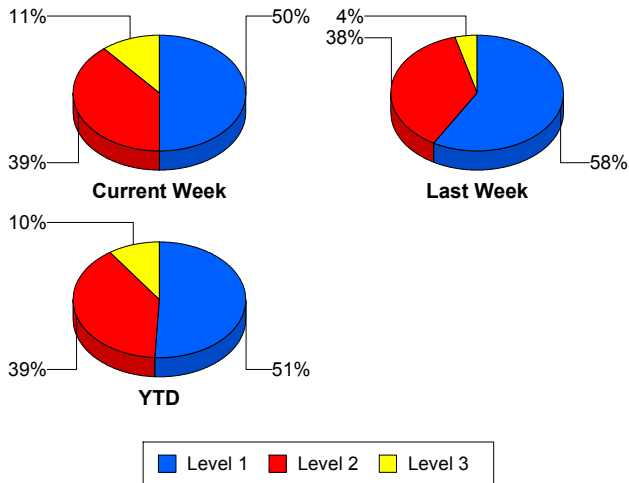
Incident Clearance Time (3B)



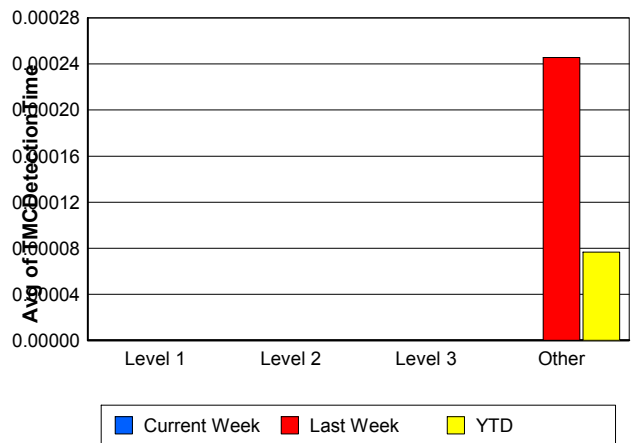
Performance Measures by Severity

	Level 1			Level 2			Level 3			Other		
	<u>This Week</u>	<u>Last Week</u>	<u>YTD</u>	<u>This Week</u>	<u>Last Week</u>	<u>YTD</u>	<u>This Week</u>	<u>Last Week</u>	<u>YTD</u>	<u>This Week</u>	<u>Last Week</u>	<u>YTD</u>
Number of Events	9	14	36	7	9	28	2	1	7	395	407	1,303
Number of Incidents	9	14	36	7	9	28	2	1	7	0	0	0
TMC Detection (min.)	0.00	0.00	0.00	0.00	0.00	0.00	0.00	0.00	0.00	0.00	0.00	0.00
TMC Verification (min.)	0.31	4.53	3.73	17.75	6.54	10.65	9.19	14.95	4.76	5.23	4.12	4.96
TMC Response (min.)	3.09	7.27	5.52	28.99	8.48	14.77	11.45	14.92	10.20	6.41	5.45	7.11
RR Dispatch Time (min.)	0.74	1.40	0.94	7.50	1.06	2.93	1.55	3.97	1.32	2.07	1.51	2.92
RR Resp. Time (min.)	2.35	5.88	4.59	21.49	7.42	11.85	9.90	10.95	8.88	4.43	3.93	4.19
Event Clearance (min.)	33.37	32.50	44.65	80.96	56.28	67.99	84.61	57.45	110.27	19.66	19.46	20.18
Roadway Clear. (min.)	15.42	15.75	16.57	68.63	50.46	57.10	46.65	42.75	96.72			
Incident Clearance (min.)	33.37	32.50	44.65	80.96	56.28	67.99	84.61	57.45	110.27			
# of Events w/ RR/SIRV	9	13	35	7	9	28	2	1	6	384	395	1,266
RR/SIRV Responses	9	13	35	7	9	28	2	1	6	384	395	1,266
RR/SIRV Activities	9	15	40	10	12	38	5	2	10	407	425	1,354

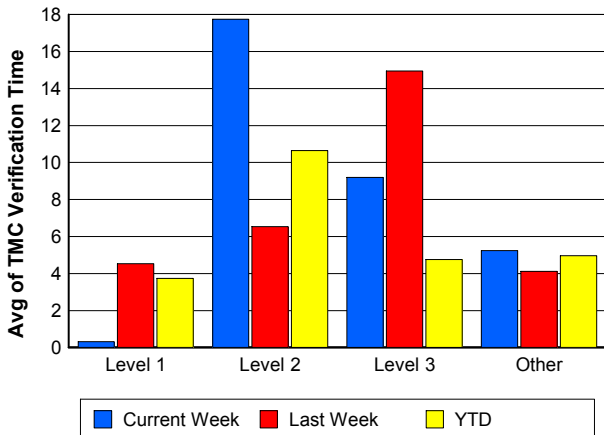
Number of Events / Severity



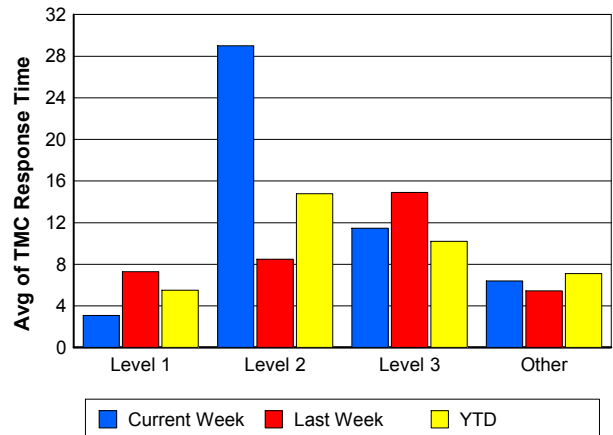
TMC Detection Time



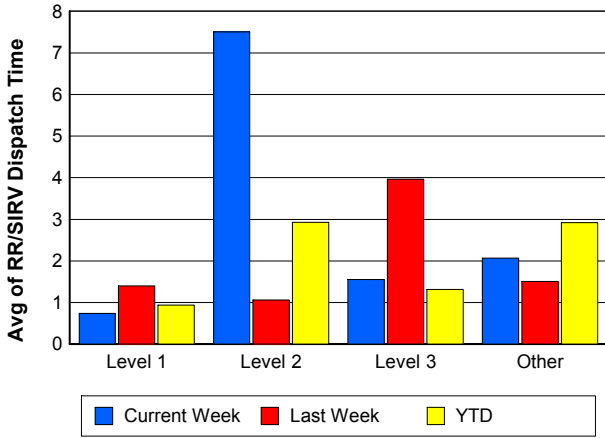
TMC Verification Time



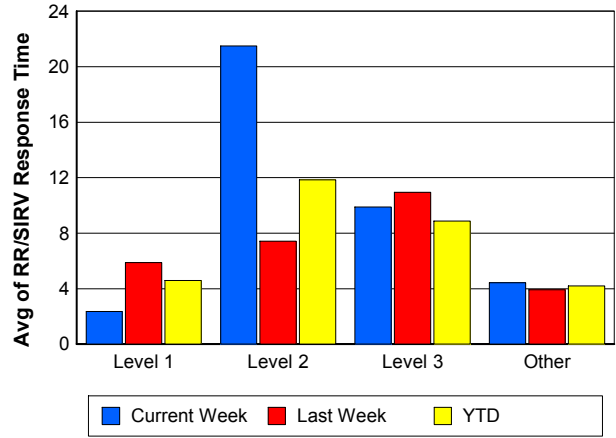
TMC Response Time



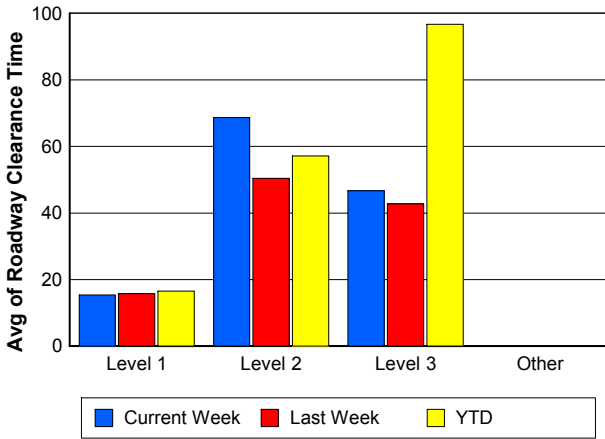
Road Ranger / SIRV Dispatch Time



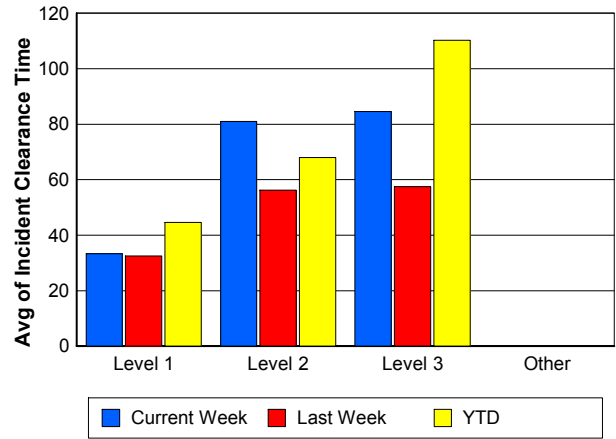
Road Ranger / SIRV Response Time



Roadway Clearance Time (2A)



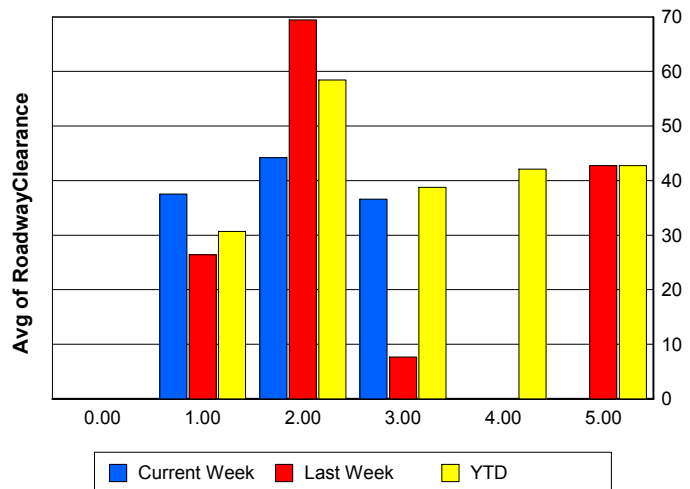
Incident Clearance Time (3B)



Roadway Clearance by Maximum Number of Lanes Blocked

	Current Week	Last Week	YTD
0			
1	37.51	26.41	30.68
2	44.18	69.46	58.44
3	36.59	7.63	38.79
4	0.00	0.00	42.08
5	0.00	42.75	42.75

Roadway Clearance Time (2A)

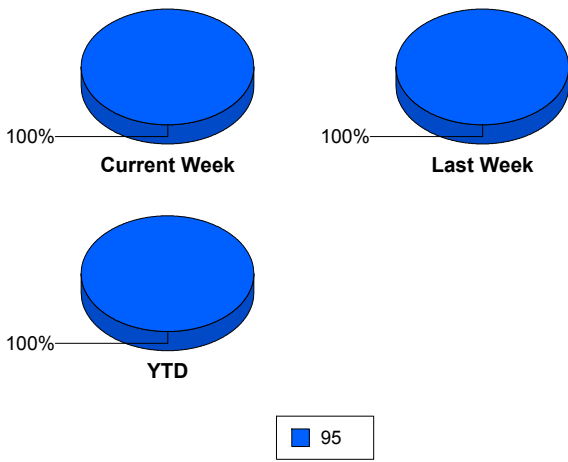


Performance Measures by Roadway

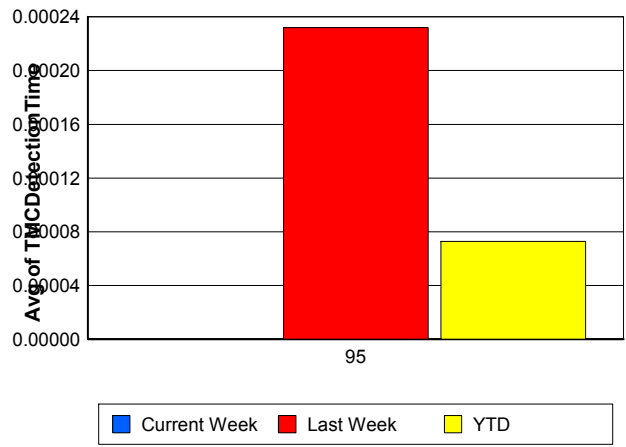
95

	<u>Current Week</u>	<u>Last Week</u>	<u>YTD</u>
Number of Events	413	431	1,374
Number of Incidents	18	24	71
TMC Detection (min.)	0.00	0.00	0.00
TMC Verification (min.)	5.36	4.21	5.04
TMC Response (min.)	6.76	5.60	7.24
RR Dispatch Time (min.)	2.13	1.50	2.86
RR Resp. Time (min.)	4.72	4.09	4.39
Event Clearance (min.)	21.32	20.74	22.26
Roadway Clear. (min.)	39.58	29.89	40.46
Incident Clearance (min.)	57.57	42.46	60.33
# of Events w/ RR/SIRV	402	418	1,335
RR/SIRV Responses	402	418	1,335
RR/SIRV Activities	431	454	1,442

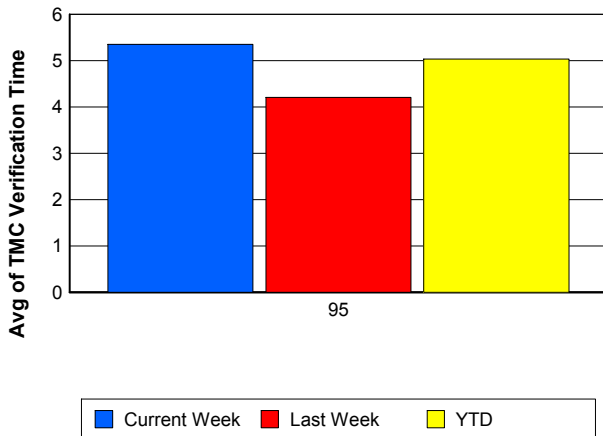
Number of Events / Roadway



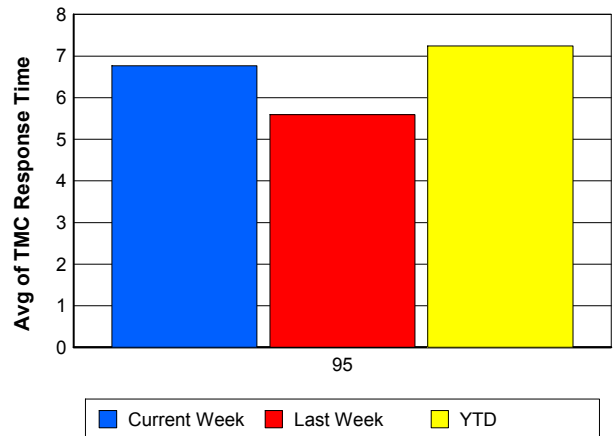
TMC Detection Time



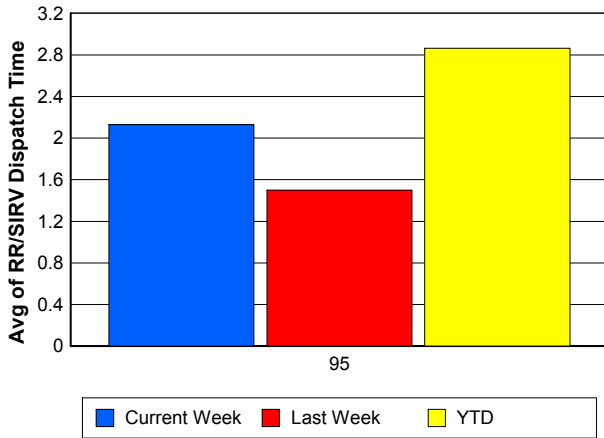
TMC Verification Time



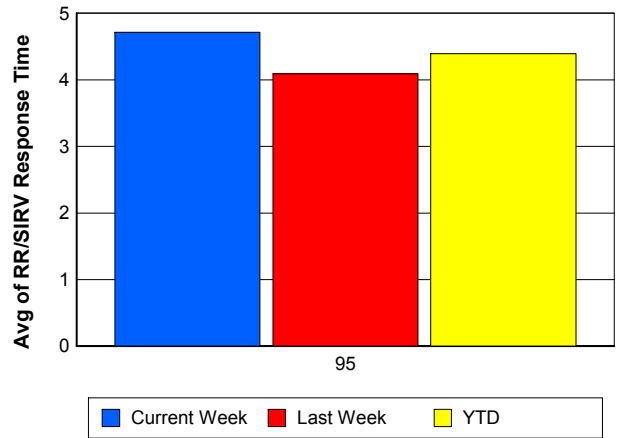
TMC Response Time



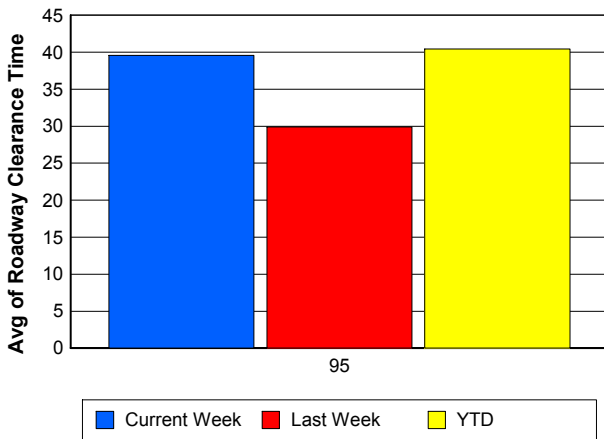
Road Ranger / SIRV Dispatch Time



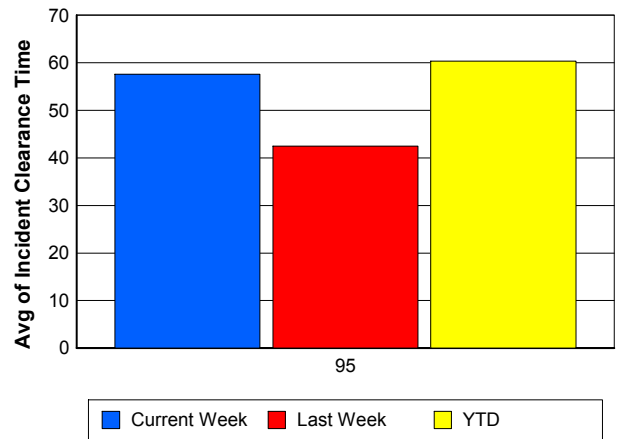
Road Ranger / SIRV Response Time



Roadway Clearance Time (2A)



Incident Clearance Time (3B)



Performance Measures by Event Type

Accident

	<u>Current Week</u>	<u>Last Week</u>	<u>YTD</u>
Number of Events	29	31	104
Number of Incidents	11	13	47
TMC Detection (min.)	0.00	0.00	0.00
TMC Verification (min.)	7.41	8.17	8.83
TMC Response (min.)	10.65	10.28	11.19
RR Dispatch Time (min.)	2.46	1.25	2.25
RR Response Time (min.)	8.19	9.03	8.91
Event Clearance (min.)	53.94	51.37	58.09
Roadway Clearance (min.)	50.70	41.06	45.39
Incident Clearance (min.)	72.00	53.94	70.36
# of Events w/ RR/SIRV	28	30	102
RR/SIRV Assists	28	30	102
RR/SIRV Activities	34	37	120

Debris on Roadway

	<u>Current Week</u>	<u>Last Week</u>	<u>YTD</u>
Number of Events	26	24	85
Number of Incidents	2	0	2
TMC Detection (min.)	0.00	0.00	0.00
TMC Verification (min.)	3.79	3.88	6.82
TMC Response (min.)	4.28	3.87	6.99
RR Dispatch Time (min.)	0.76	0.28	2.47
RR Response Time (min.)	3.52	3.59	4.49
Event Clearance (min.)	7.56	7.60	10.28
Roadway Clearance (min.)	7.18		7.18
Incident Clearance (min.)	21.93		21.93
# of Events w/ RR/SIRV	25	24	83
RR/SIRV Assists	25	24	83
RR/SIRV Activities	25	23	82

Disabled Vehicle

	<u>Current Week</u>	<u>Last Week</u>	<u>YTD</u>
Number of Events	341	356	1,123
Number of Incidents	3	10	17
TMC Detection (min.)	0.00	0.00	0.00
TMC Verification (min.)	5.53	4.12	4.81
TMC Response (min.)	6.10	5.33	6.78
RR Dispatch Time (min.)	2.10	1.62	2.97
RR Response Time (min.)	4.10	3.70	3.84
Event Clearance (min.)	19.13	19.72	19.87
Roadway Clearance (min.)	32.99	17.61	21.93
Incident Clearance (min.)	51.80	30.91	33.65
# of Events w/ RR/SIRV	335	351	1,107
RR/SIRV Assists	335	351	1,107
RR/SIRV Activities	361	388	1,211

Emergency Vehicles

	<u>YTD</u>
Number of Events	1
Number of Incidents	1
TMC Detection (min.)	0.00
TMC Verification (min.)	0.00
TMC Response (min.)	
RR Dispatch Time (min.)	
RR Response Time (min.)	
Event Clearance (min.)	210.75
Roadway Clearance (min.)	209.83
Incident Clearance (min.)	210.75
# of Events w/ RR/SIRV	0
RR/SIRV Assists	0
RR/SIRV Activities	0

Other

	<u>Current Week</u>	<u>Last Week</u>	<u>YTD</u>
Number of Events	12	17	48
Number of Incidents	0	0	0
TMC Detection (min.)	0.00	0.00	0.00
TMC Verification (min.)	0.00	0.00	0.00
TMC Response (min.)	20.17	6.50	10.83
RR Dispatch Time (min.)	6.40	1.21	2.63
RR Response Time (min.)	11.54	6.19	7.35
Event Clearance (min.)	24.00	7.54	14.16
Roadway Clearance (min.)			
Incident Clearance (min.)			
# of Events w/ RR/SIRV	9	11	31
RR/SIRV Assists	9	11	31
RR/SIRV Activities	6	4	16

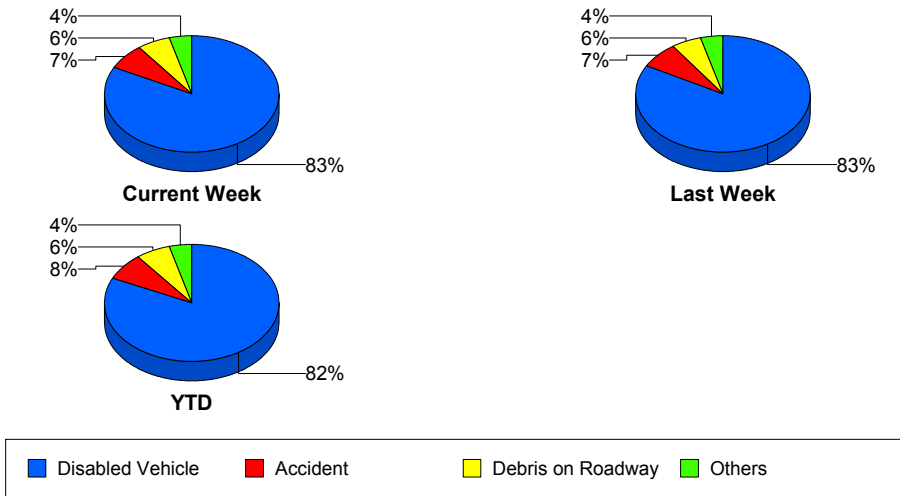
Police Activity

	<u>Current Week</u>	<u>Last Week</u>	<u>YTD</u>
Number of Events	4	1	7
Number of Incidents	2	1	4
TMC Detection (min.)	0.00	0.00	0.00
TMC Verification (min.)	0.00	0.00	0.00
TMC Response (min.)	28.41		21.75
RR Dispatch Time (min.)	1.01		0.79
RR Response Time (min.)	27.40		20.96
Event Clearance (min.)	48.59	8.62	53.31
Roadway Clearance (min.)	20.74	7.63	35.54
Incident Clearance (min.)	22.51	8.62	37.33
# of Events w/ RR/SIRV	4	0	6
RR/SIRV Assists	4	0	6
RR/SIRV Activities	4	0	6

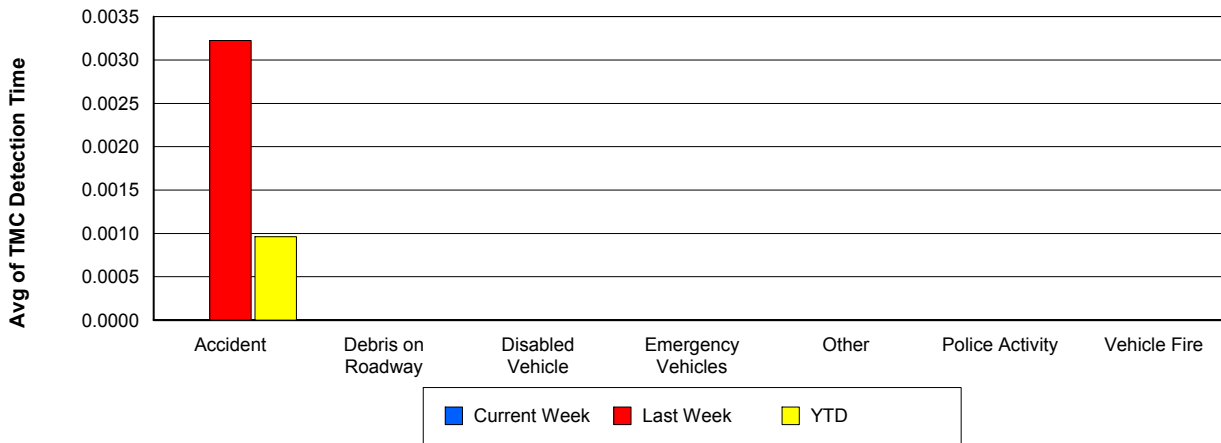
Vehicle Fire

	<u>Current Week</u>	<u>YTD</u>
Number of Events	1	2
Number of Incidents	0	0
TMC Detection (min.)	0.00	0.00
TMC Verification (min.)	12.20	9.57
TMC Response (min.)	12.17	9.55
RR Dispatch Time (min.)	3.53	2.83
RR Response Time (min.)	8.63	6.72
Event Clearance (min.)	38.42	23.39
Roadway Clearance (min.)		
Incident Clearance (min.)		
# of Events w/ RR/SIRV	1	2
RR/SIRV Assists	1	2
RR/SIRV Activities	1	2

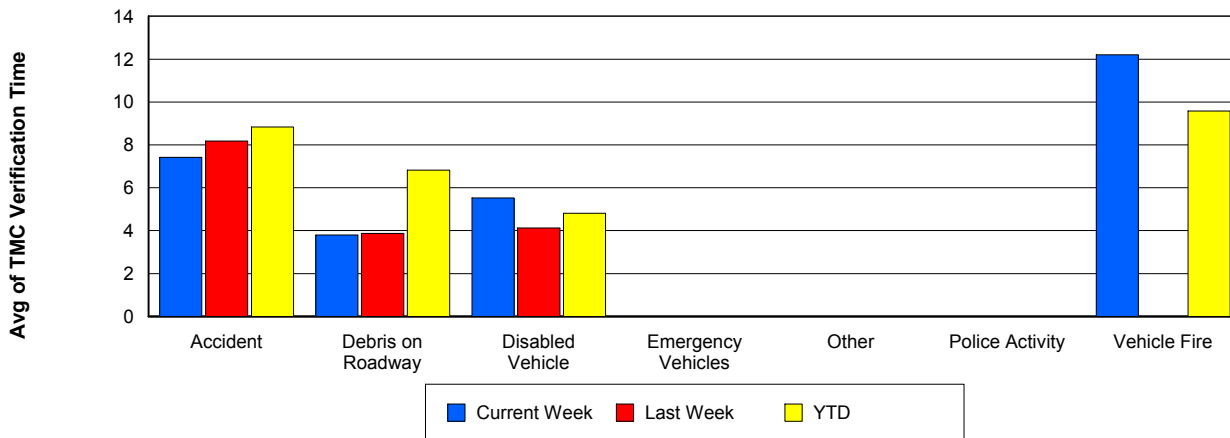
Number of Events / Event Type



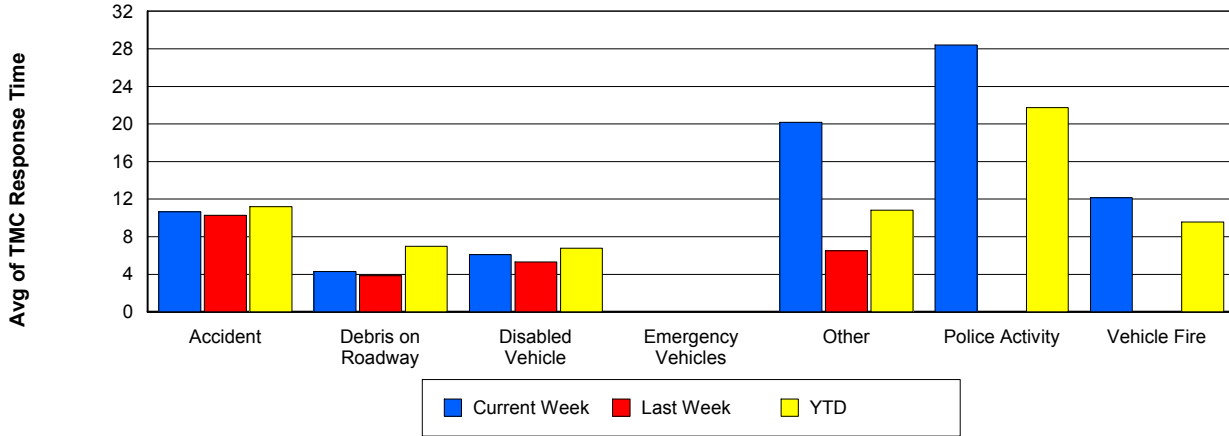
TMC Detection Time



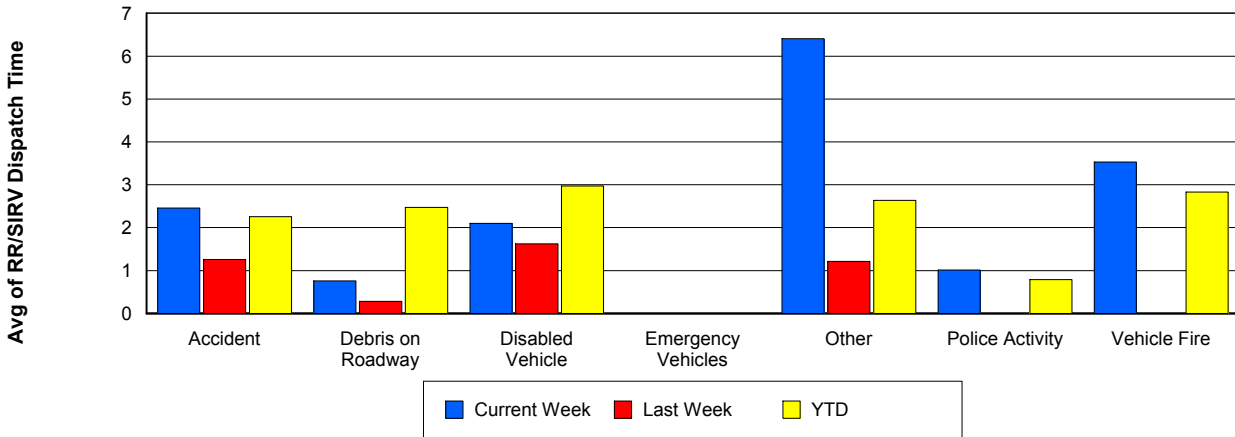
TMC Verification Time



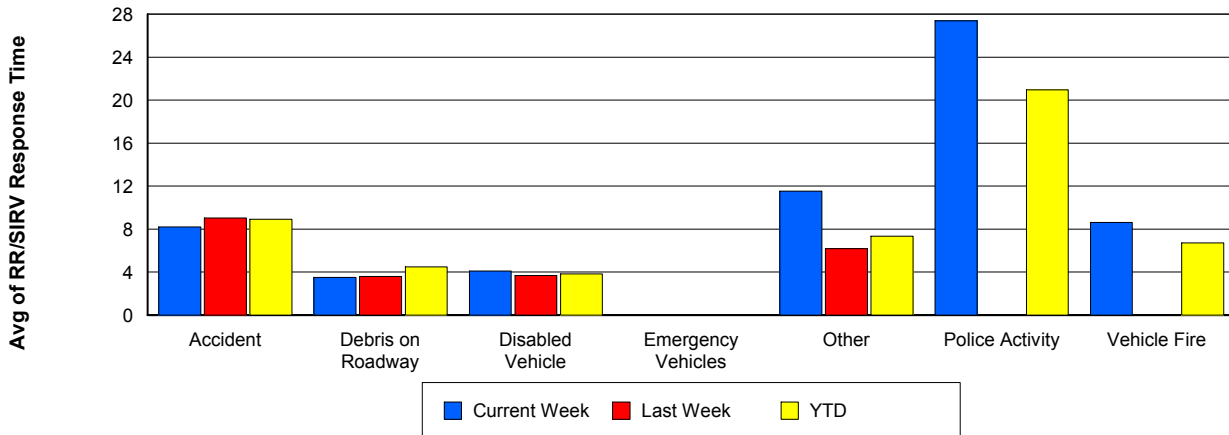
TMC Response Time



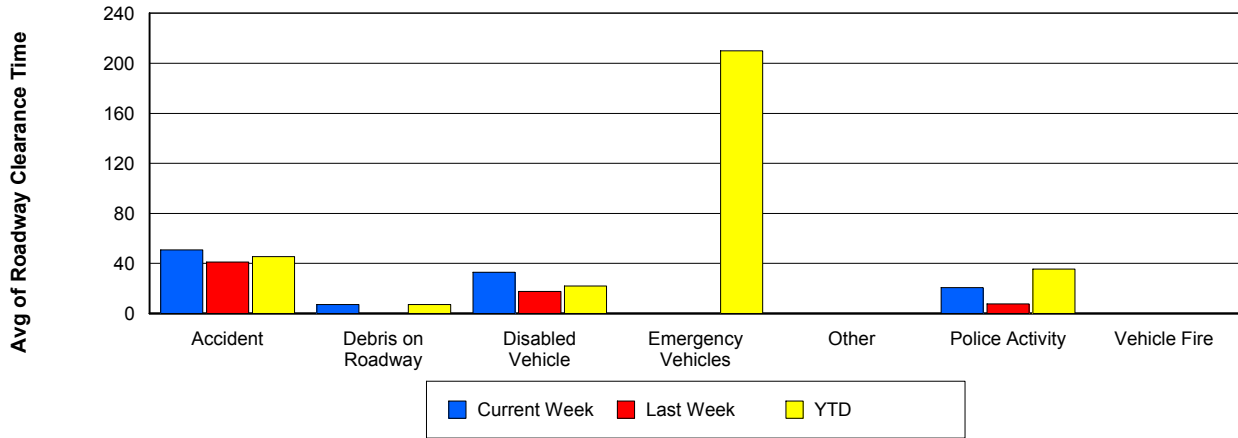
Road Ranger / SIRV Dispatch Time



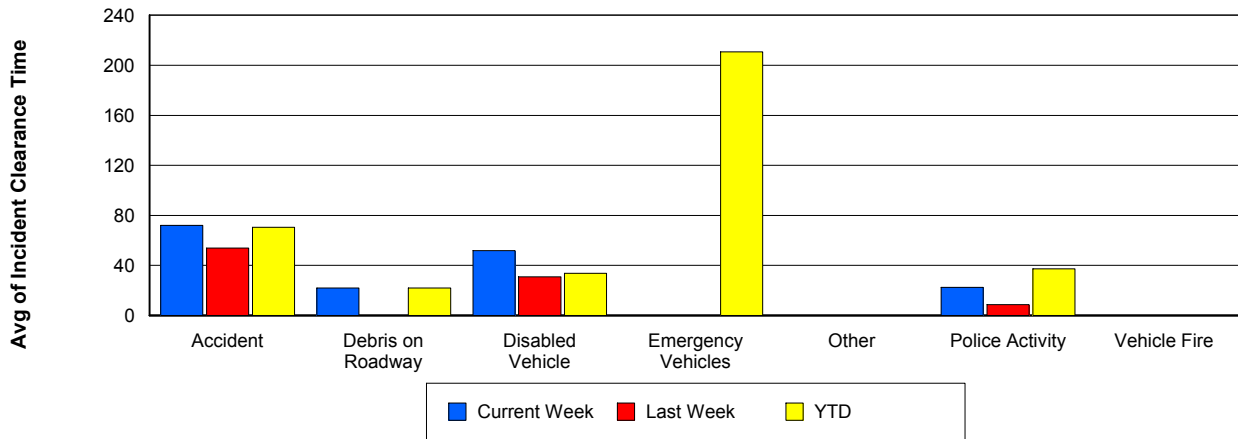
Road Ranger / SIRV Response Time



Roadway Clearance Time (2A)



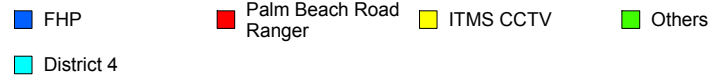
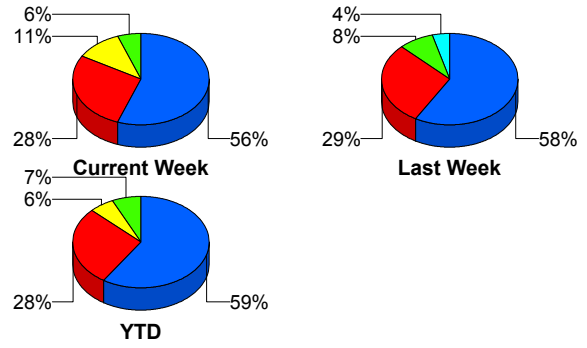
Incident Clearance Time (3B)



Incident Detection Methods

	Current Week	Last Week	YTD
Broward Road Ranger	1	0	2
District 4	0	1	1
FHP	10	14	42
ITMS CCTV	2	1	4
Motorist	0	1	2
Palm Beach Road Ran	5	7	20
Total	18	24	71

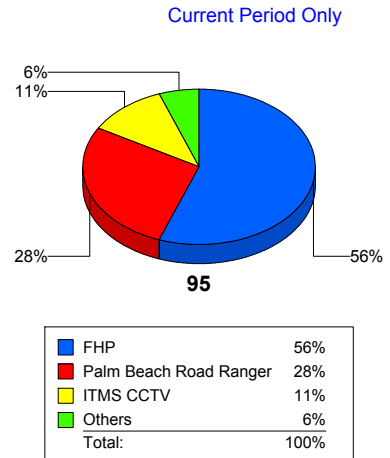
Total Incidents by Detection Method



Incident Detection Methods by Roadway

		Current Week	Last Week	YTD
95	Broward Road Ranger	1	0	2
	District 4	0	1	1
	FHP	10	14	42
	ITMS CCTV	2	1	4
	Motorist	0	1	2
	Palm Beach Road Ran	5	7	20
	Total	18	24	71
Total		18	24	71

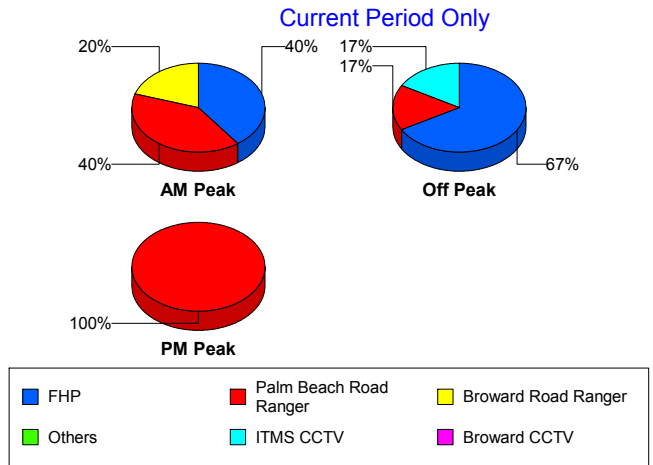
Total Events by Roadway and Detection Method



Incident Detection Methods by Peak Period

		Current Week	Last Week	YTD
AM Peak	Broward Road Ranger	1	0	1
	District 4	0	1	1
	FHP	2	6	14
	Palm Beach Road Ran	2	3	6
	Total	5	10	22
Off Peak	Broward Road Ranger	0	0	1
	FHP	8	3	17
	ITMS CCTV	2	1	4
	Motorist	0	0	1
	Palm Beach Road Ran	2	2	9
	Total	12	6	32
PM Peak	FHP	0	5	11
	Motorist	0	1	1
	Palm Beach Road Ran	1	2	5
	Total	1	8	17
Total	18	24	71	

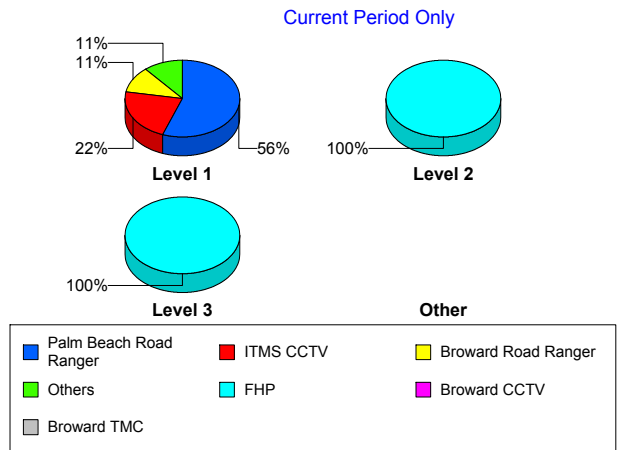
Total Events by Peak Period and Detection Method



Incident Detection Methods by Severity

		Current Week	Last Week	YTD
Level 1	Broward Road Ranger	1	0	2
	District 4	0	1	1
	FHP	1	7	15
	ITMS CCTV	2	1	3
	Motorist	0	1	2
	Palm Beach Road Ran	5	4	13
	Total	9	14	36
Level 2	FHP	7	6	22
	ITMS CCTV	0	0	1
	Palm Beach Road Ran	0	3	5
	Total	7	9	28
Level 3	FHP	2	1	5

Total Events by Severity and Detection Method



		Current Week	Last Week	YTD
Level 3	Palm Beach Road Ran	0	0	2
	Total	2	1	7
Total		18	24	71

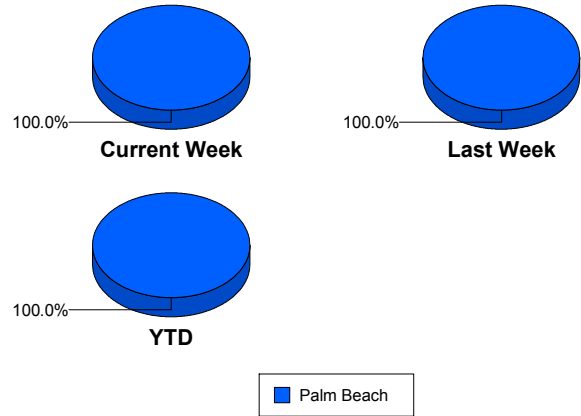
Road Ranger / SIRV Performance Measures

Road Ranger / SIRV Performance By County

Values presented are:
 - Total Events with a RR/SIRV Response
 - Total RR/SIRV Responses,
 - Total Activities Performed

	Current We	Last Week	YTD
Palm Beach	540	550	1,791
	551	566	1,835
	578	607	1,953

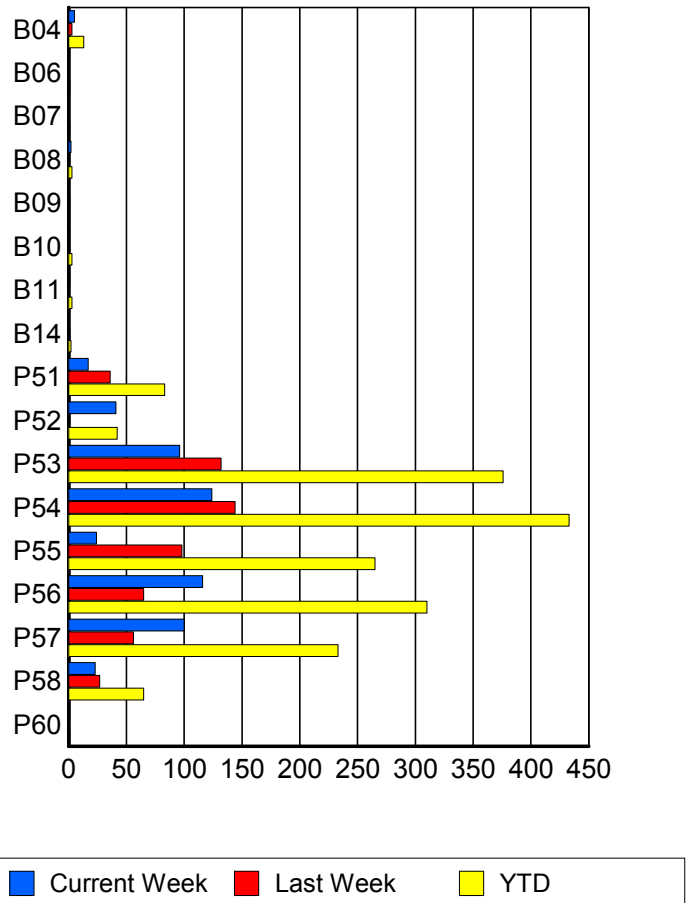
RR/SIRV Responses per County



Road Ranger / SIRV Performance By Truck

	Current We	Last Week	YTD
B04	5	3	13
	5	3	13
	5	3	14
B06	0	0	1
	0	0	1
	0	0	3
B07	0	0	1
	0	0	1
	0	0	1
B08	2	1	3
	2	1	3
	2	1	3
B09	0	1	1
	0	1	1
	0	1	1
B10	1	1	3
	1	1	3
	1	1	3
B11	1	0	3
	1	0	3
	1	0	3
B14	0	1	2
	0	1	2
	0	1	2
P51	17	36	83
	17	36	83
	18	37	88

RR/SIRV Responses per Truck



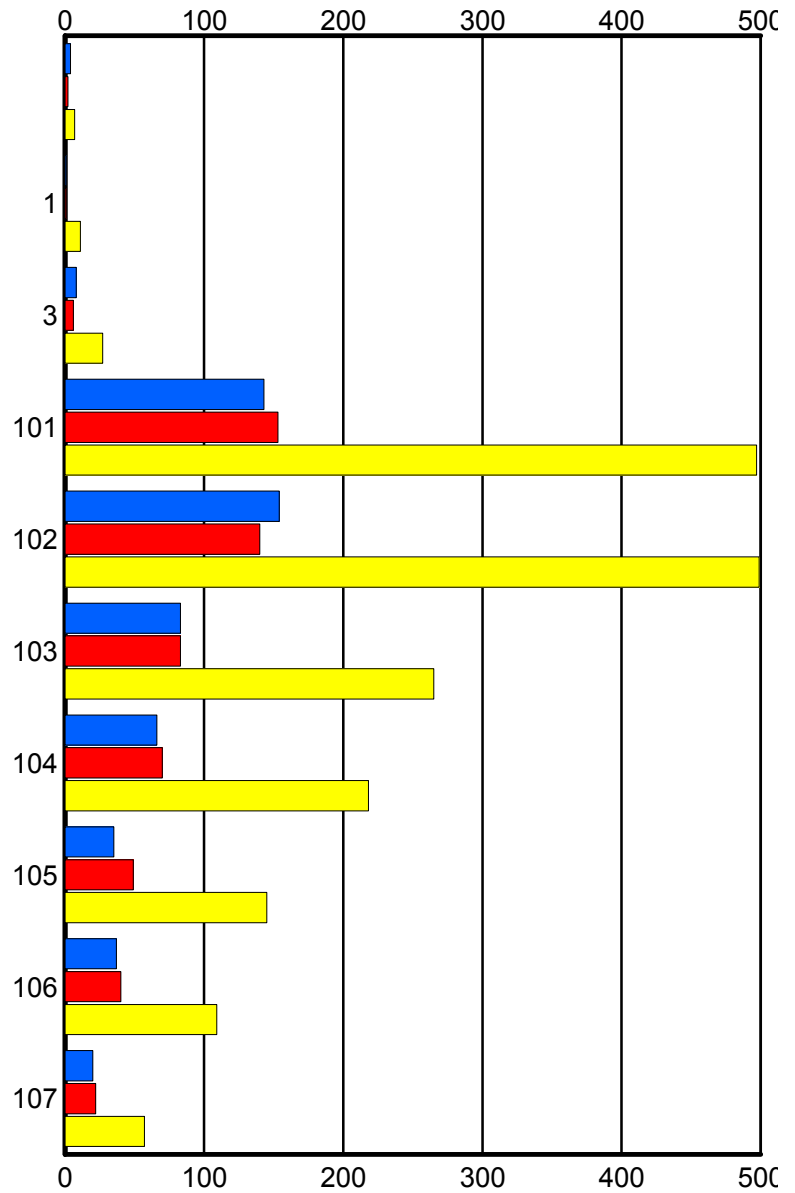
	Current We	Last Week	YTD
P52	41	1	42
	41	1	42
	42	1	43
P53	96	131	373
	96	132	376
	101	147	406
P54	123	141	427
	124	144	433
	129	151	454
P55	24	98	264
	24	98	265
	25	101	278
P56	114	65	306
	116	65	310
	123	72	332
P57	100	55	230
	100	56	233
	105	61	246
P58	23	27	65
	23	27	65
	25	30	75
P60	1	0	1
	1	0	1
	1	0	1

Road Ranger / SIRV Performance By Beat

	Current We	Last Week	YTD
	4	2	7
	4	2	7
	4	2	7
1	1	1	10
	1	1	11
	1	1	11
3	8	6	26
	8	6	27
	8	6	30
101	141	151	490
	143	153	497
	150	167	529
102	153	138	493
	154	140	499
	159	148	527
103	83	83	264
	83	83	265
	89	85	277
104	66	69	217
	66	70	218
	68	76	232
105	35	49	143
	35	49	145
	39	53	158
106	37	40	109
	37	40	109
	38	44	115
107	20	22	57
	20	22	57
	22	25	67

Values presented are:
 - Total Events with a RR/SIRV Response
 - Total RR/SIRV Responses,
 - Total Activities Performed

RR/SIRV Responses per Beat



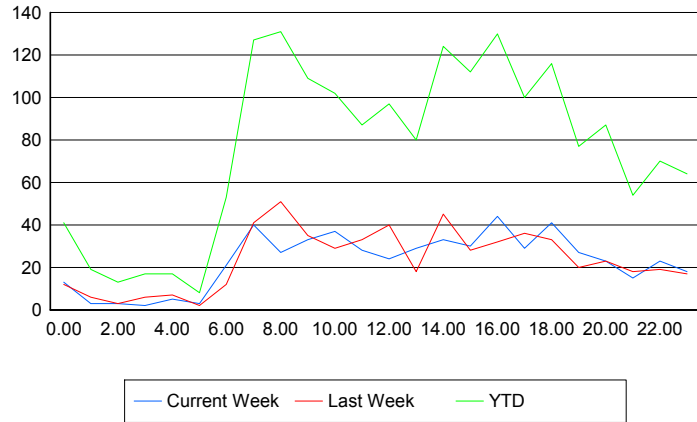
■ Current Week
 ■ Last Week
 ■ YTD

Road Ranger / SIRV Performance By Time of Day

Values presented are:
 - Total Events with a RR/SIRV Response
 - Total RR/SIRV Responses,
 - Total Activities Performed

	Current We	Last Week	YTD
12AM-1AM	13 13 14	12 12 13	40 41 46
1AM-2AM	3 3 3	6 6 6	19 19 19
2AM-3AM	3 3 3	3 3 3	13 13 13
3AM-4AM	2 2 2	6 6 6	17 17 18
4AM-5AM	5 5 5	7 7 7	17 17 17
5AM-6AM	3 3 3	2 2 2	8 8 8
6AM-7AM	21 21 21	10 12 15	51 53 58
7AM-8AM	39 40 42	40 41 41	125 127 137
8AM-9AM	27 27 28	49 51 54	127 131 139
9AM-10AM	33 33 36	35 35 35	108 109 114
10AM-11AM	35 37 40	27 29 29	98 102 108
11AM-12PM	26 28 29	32 33 35	83 87 91
12PM-1PM	23 24 25	39 40 41	93 97 100

Number of Responses / Hour of the Day



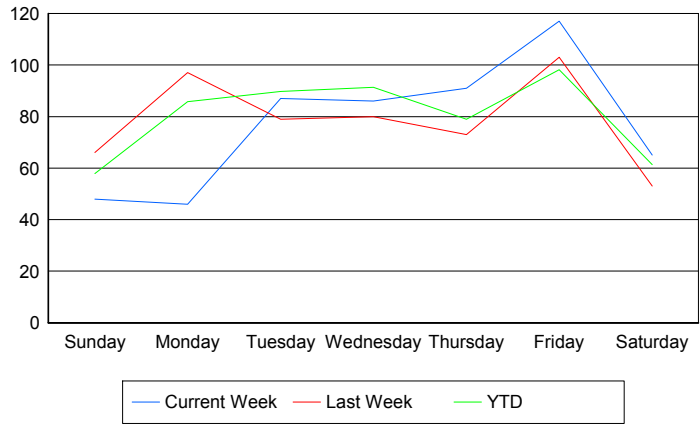
	Current We	Last Week	YTD
1PM-2PM	27	16	75
	29	18	80
	31	20	87
2PM-3PM	32	43	120
	33	45	124
	33	49	128
3PM-4PM	30	27	110
	30	28	112
	33	29	119
4PM-5PM	42	31	125
	44	32	130
	46	38	141
5PM-6PM	29	36	99
	29	36	100
	30	42	111
6PM-7PM	41	33	115
	41	33	116
	43	35	123
7PM-8PM	27	20	75
	27	20	77
	28	25	85
8PM-9PM	23	23	87
	23	23	87
	23	25	91
9PM-10PM	15	18	53
	15	18	54
	16	19	56
10PM-11PM	23	18	69
	23	19	70
	24	21	76
11PM-12AM	18	17	64
	18	17	64
	20	17	68

Road Ranger / SIRV Performance By Day of Week

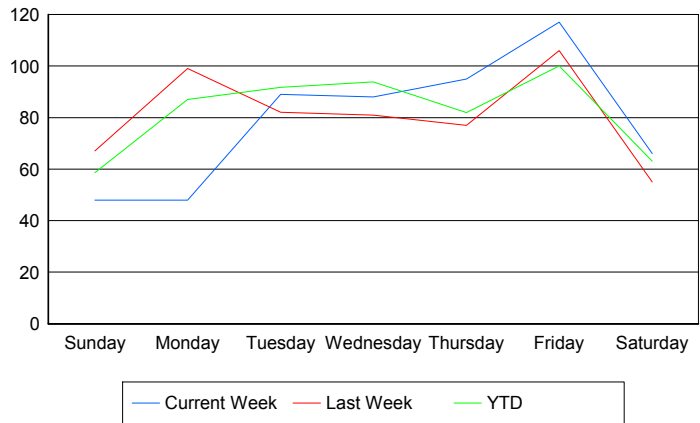
Values presented are:
 - Total Events with a RR/SIRV Response
 - Total RR/SIRV Responses,
 - Total Activities Performed

	Current We	Last Week	YTD
Sunday	48	65	171
	48	66	173
	50	67	178
Monday	46	97	237
	48	99	241
	51	108	259
Tuesday	87	79	267
	89	82	273
	95	86	286
Wednesday	86	80	270
	88	81	277
	92	88	297
Thursday	91	73	235
	95	77	244
	99	86	271
Friday	117	103	368
	117	106	376
	123	113	398
Saturday	65	53	244
	66	55	251
	68	59	264

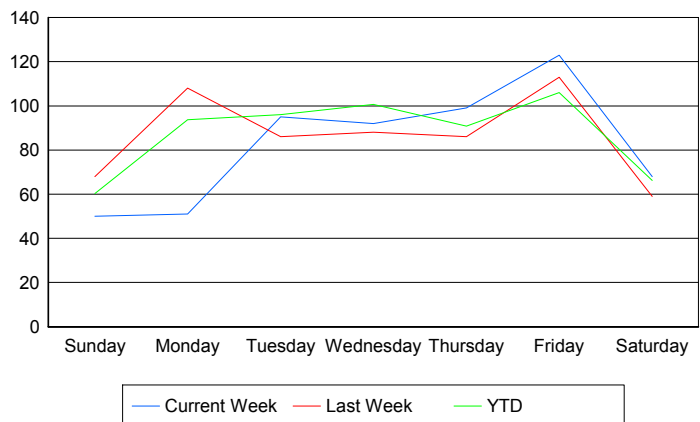
Avg # of events with a RR/SIRV Response per Day of the Week



Avg # of RR/SIRV Responses per Day of the Week



Avg # of RR/SIRV Activities Performed per Day of the Week



Road Ranger / SIRV Responses per Time of Day and Day of Week

