



Monthly Performance Measures Report Palm Beach County



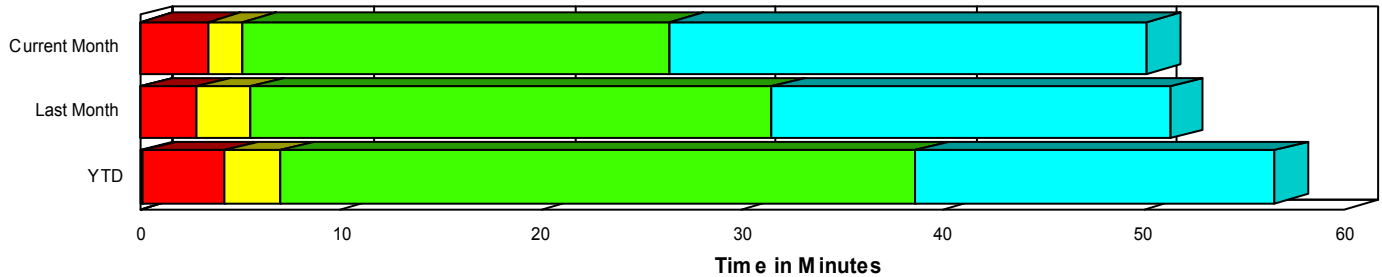
Created on:
November 03, 2008
9:04 am

Period From Oct 1, 2008 to Oct 31, 2008

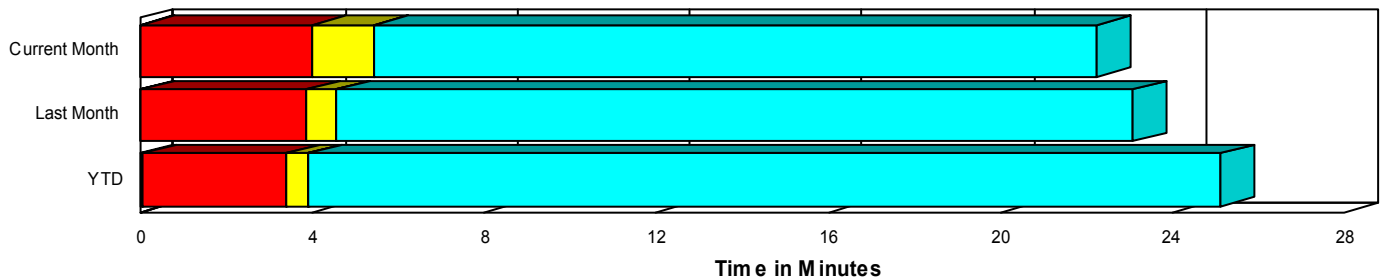
Performance Measures Summary

	Traffic Events (No Lanes Blocked)			Incidents (Lanes Blocked)		
	<u>This Month</u>	<u>Last Month</u>	<u>YTD</u>	<u>This Month</u>	<u>Last Month</u>	<u>YTD</u>
Number of Events	1,223	1,290	19,906	79	93	1,381
TMC Detection (min.)	0.01	0.00	0.08	0.01	0.00	0.12
TMC Verification (min.)	4.01	3.88	3.33	3.37	2.87	4.07
TMC Response (min.)	6.42	5.10	3.95	5.11	5.66	7.02
RR Dispatch Time (min.)	2.03	1.34	1.20	1.77	1.46	2.32
RR Response Time (min.)	4.38	3.80	2.79	3.34	4.20	4.79
Roadway Clearance (min.)				37.00	37.67	39.34
Event Clearance (min.)	23.20	23.63	25.25	60.74	56.43	56.93
# of Events w/ RR/SIRV	1,022	1,129	19,224	65	70	1,263
RR/SIRV Responses	1,022	1,129	19,331	65	70	1,340
RR/SIRV Activities	1,090	1,185	20,884	85	96	1,804

Incident Clearance TimeLine



Traffic Event(Non-Lane Blockage) Time-Line



■ Avg. TMC Detection Time	■ Avg. Time from TMC Response to Roadway Clearance*
■ Avg. Time from TMC Detection to TMC Verification	■ Avg. Time from Roadway Clearance to Incident/Event Clearance**
■ Avg. Time from TMC Verification to TMC Response	

* Roadway clearance equals all travel lanes open

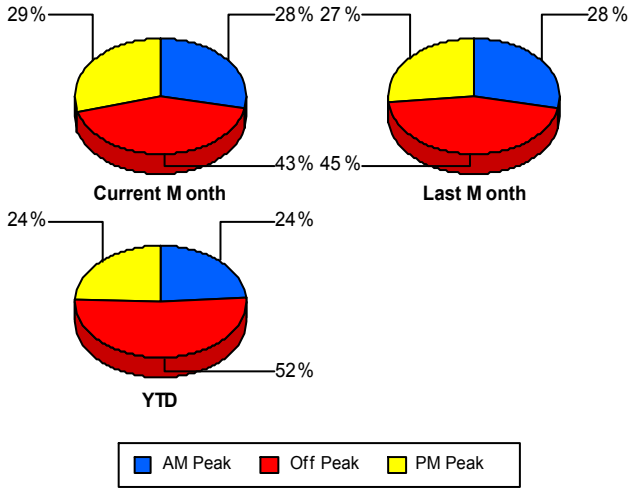
** Incident clearance equals time when last responder has left the scene

Performance Measures by Peak Period

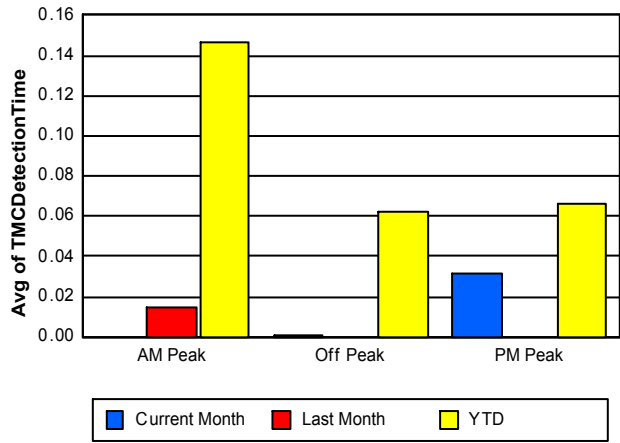
Note: AM peak period is defined as 6am to 10am and PM peak period is defined as 3pm to 7pm.

	AM Peak			Off Peak			PM Peak		
	<u>Current Month</u>	<u>Last Month</u>	<u>YTD</u>	<u>Current Month</u>	<u>Last Month</u>	<u>YTD</u>	<u>Current Month</u>	<u>Last Month</u>	<u>YTD</u>
Number of Events	364	393	5,018	559	623	11,072	379	367	5,197
Number of Incidents	28	29	360	24	46	720	27	18	301
TMC Detection (min.)	0.00	0.01	0.15	0.00	0.00	0.06	0.03	0.00	0.07
TMC Verification (min.)	4.04	3.90	2.96	3.39	3.83	3.67	4.75	3.66	3.15
TMC Response (min.)	6.13	5.30	3.83	6.75	5.11	4.48	6.09	5.00	3.75
RR Dispatch Time (min.)	1.66	1.37	1.29	2.34	1.49	1.34	2.01	1.10	1.11
RR Response Time (min.)	4.46	3.96	2.58	4.41	3.63	3.18	4.08	3.95	2.69
Event Clearance (min.)	22.81	33.67	27.36	29.61	25.39	29.78	21.94	18.18	21.97
Roadway Clearance (min.)	31.34	46.62	34.32	30.19	34.39	43.45	48.92	31.64	35.51
Incident Clearance (min.)	57.66	71.22	55.06	51.34	51.39	59.89	72.29	45.46	52.07
# of Events w/ RR/SIRV	343	365	4,860	392	501	10,545	352	333	5,082
RR/SIRV Responses	343	365	4,905	392	501	10,648	352	333	5,118
RR/SIRV Activities	374	398	5,381	423	531	11,773	378	352	5,534

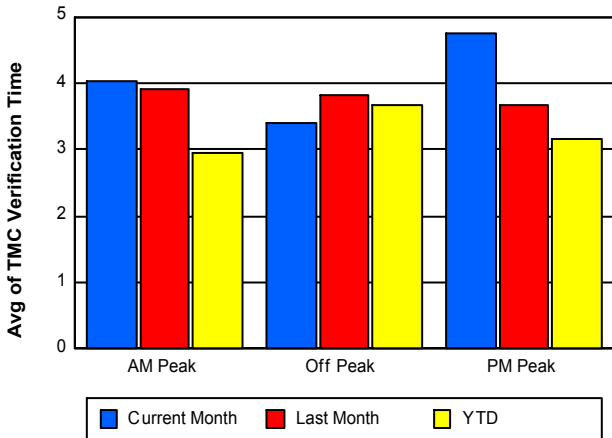
Number of Events / Peak Period



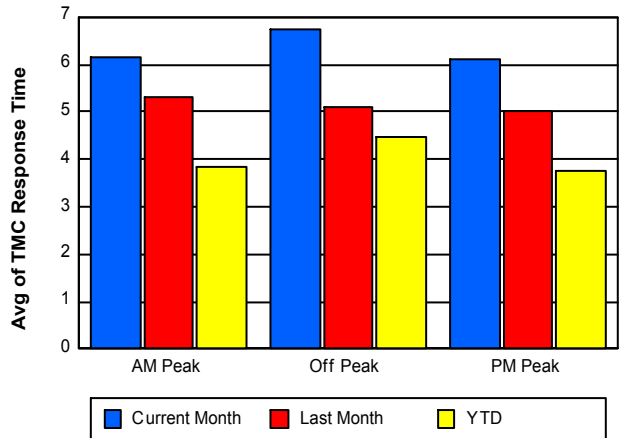
TMC Detection Time



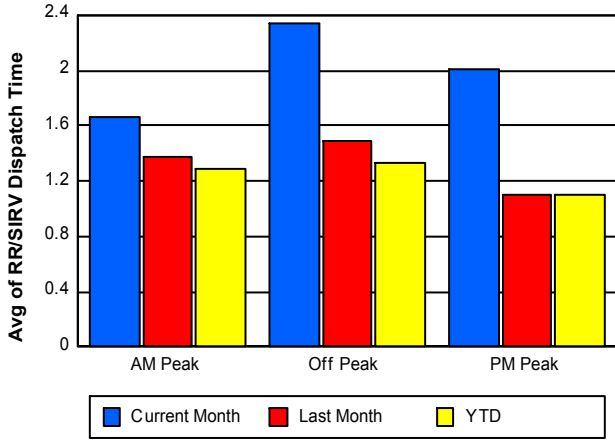
TMC Verification Time



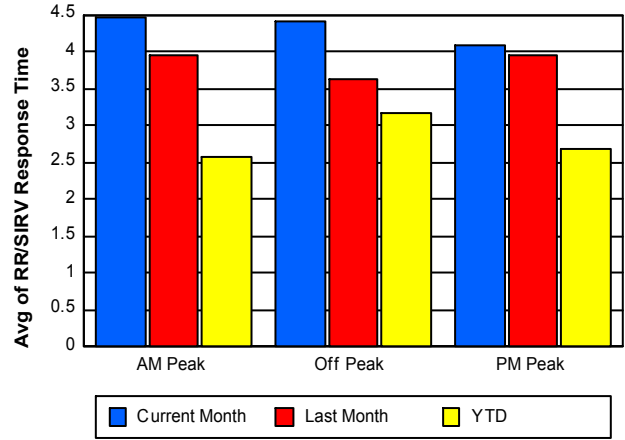
TMC Response Time



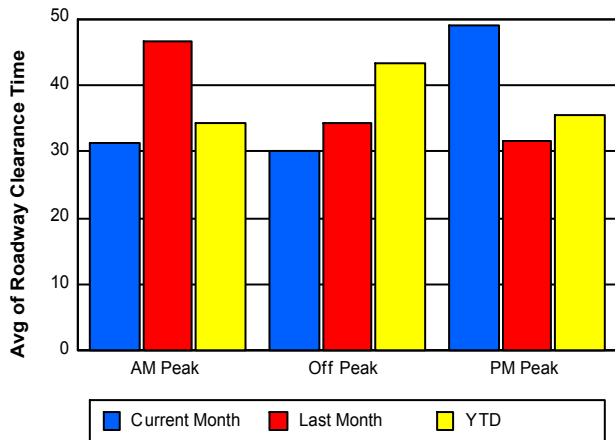
Road Ranger / SIRV Dispatch Time



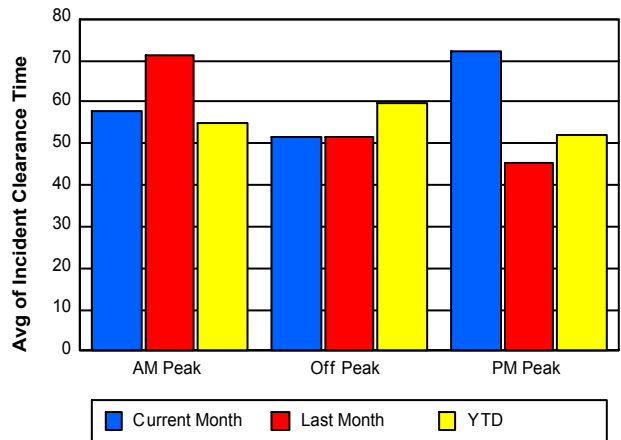
Road Ranger / SIRV Response Time



Roadway Clearance Time (2A)



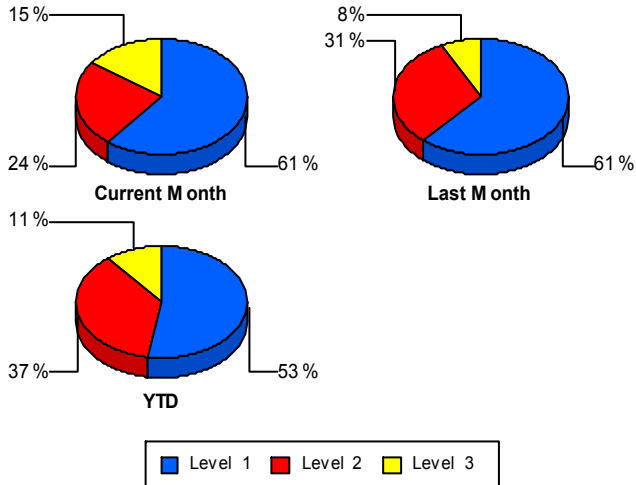
Incident Clearance Time (3B)



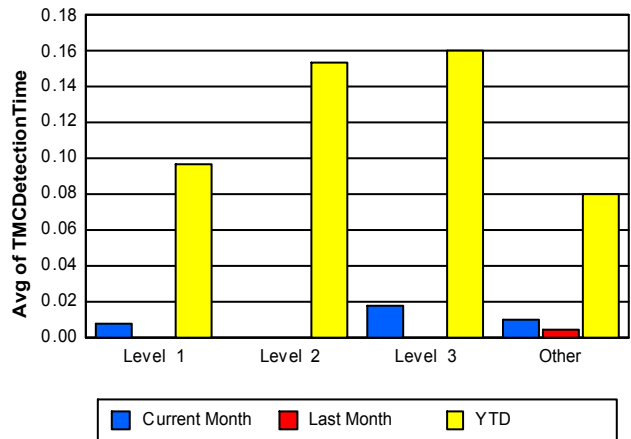
Performance Measures by Severity

	Level 1			Level 2			Level 3			Other		
	<u>This Month</u>	<u>Last Month</u>	<u>YTD</u>	<u>This Month</u>	<u>Last Month</u>	<u>YTD</u>	<u>This Month</u>	<u>Last Month</u>	<u>YTD</u>	<u>This Month</u>	<u>Last Month</u>	<u>YTD</u>
Number of Events	48	57	726	19	29	507	12	7	148	1,223	1,290	19,906
Number of Incidents	48	57	726	19	29	507	12	7	148	0	0	0
TMC Detection (min.)	0.01	0.00	0.10	0.00	0.00	0.15	0.02	0.00	0.16	0.01	0.00	0.08
TMC Verification (min.)	2.29	2.19	2.28	5.75	3.95	6.37	3.93	3.85	5.00	4.01	3.88	3.33
TMC Response (min.)	3.82	5.40	4.49	7.22	5.03	9.46	9.46	13.71	11.17	6.42	5.10	3.95
RR Dispatch Time (min.)	1.49	1.22	1.52	1.40	1.43	2.85	6.45	5.57	4.59	2.03	1.34	1.20
RR Resp. Time (min.)	2.33	4.18	3.03	5.82	3.60	6.61	3.01	8.14	7.22	4.38	3.80	2.79
Event Clearance (min.)	40.53	33.27	33.02	74.46	71.34	69.78	119.86	183.21	130.17	23.20	23.63	25.25
Roadway Clear. (min.)	13.37	12.41	13.07	57.76	51.90	56.03	98.64	184.43	111.04			
Incident Clearance (min.)	40.53	33.27	33.02	74.46	71.34	69.78	119.86	183.21	130.17			
# of Events w/ RR/SIRV	43	49	664	18	18	477	4	3	122	1,022	1,129	19,224
RR/SIRV Responses	43	49	684	18	18	505	4	3	151	1,022	1,129	19,331
RR/SIRV Activities	50	67	849	27	26	712	8	3	243	1,090	1,185	20,884

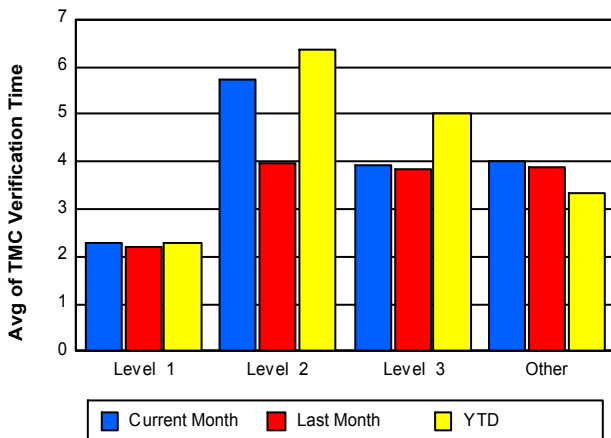
Number of Events / Severity



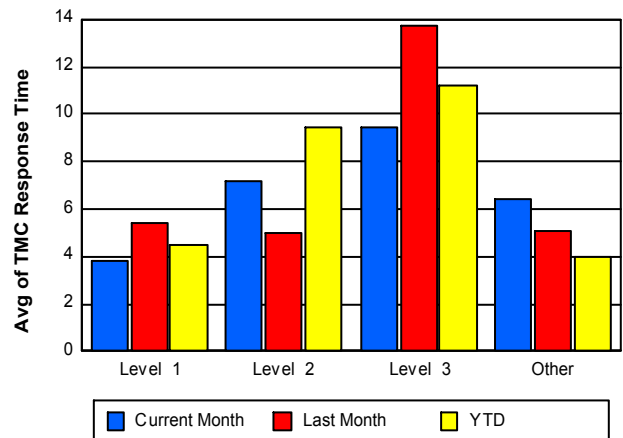
TMC Detection Time



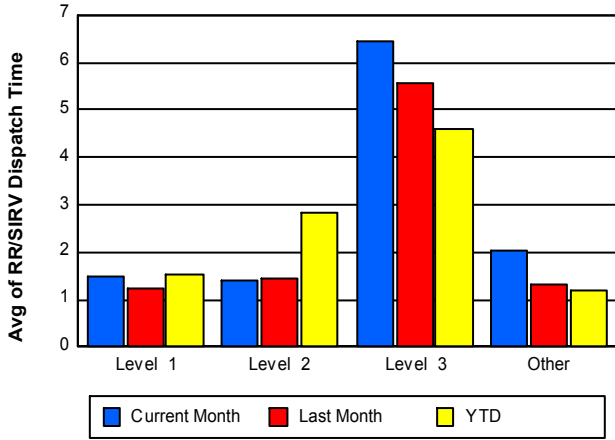
TMC Verification Time



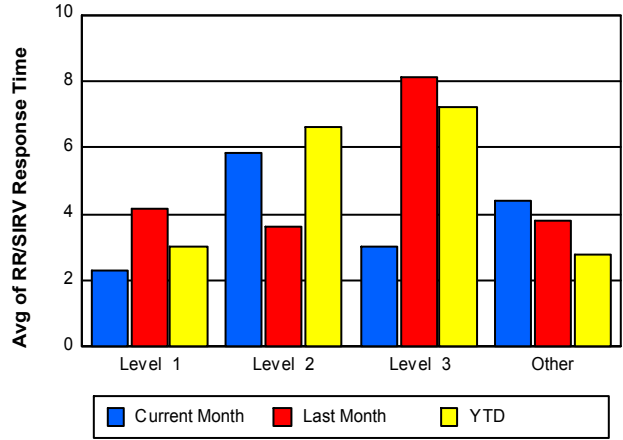
TMC Response Time



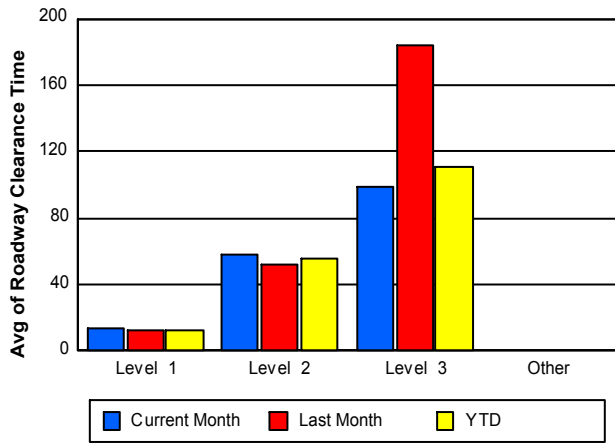
Road Ranger / SIRV Dispatch Time



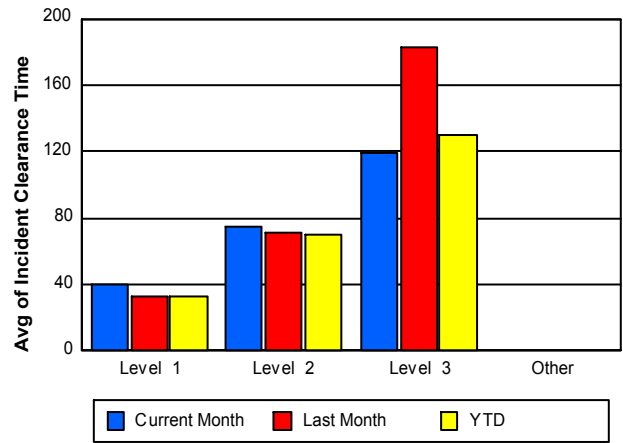
Road Ranger / SIRV Response Time



Roadway Clearance Time (2A)



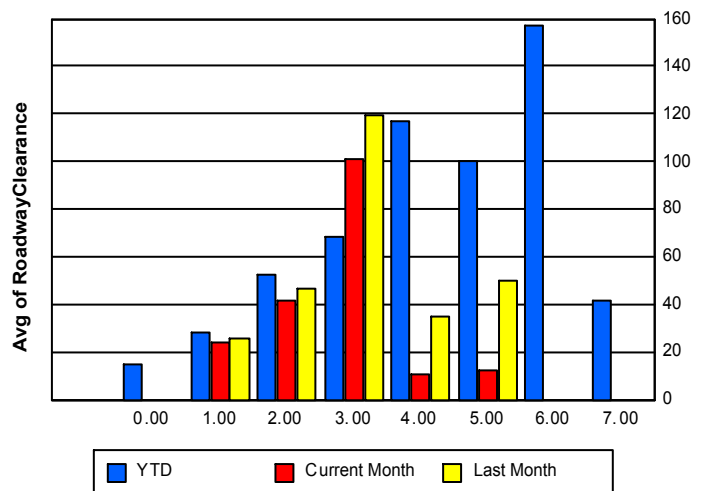
Incident Clearance Time (3B)



Roadway Clearance by Maximum Number of Lanes Blocked

	Current Month	Last Month	YTD
	0.00	0.00	
0			14.70
1	23.77	25.67	28.27
2	41.41	46.62	52.92
3	101.34	119.18	68.57
4	10.62	34.70	116.55
5	12.18	49.97	100.15
6	0.00	0.00	157.15

Roadway Clearance Time(2A)



	Current Month	Last Month	YTD
7	0.00	0.00	41.44

Performance Measures by Roadway

95

	<u>Current Month</u>	<u>Last Month</u>	<u>YTD</u>
Number of Events	1,301	1,383	21,283
Number of Incidents	78	93	1,378
TMC Detection (min.)	0.01	0.00	0.08
TMC Verification (min.)	3.94	3.81	3.38
TMC Response (min.)	6.34	5.13	4.14
RR Dispatch Time (min.)	2.02	1.35	1.27
RR Resp. Time (min.)	4.32	3.82	2.91
Event Clearance (min.)	24.94	25.83	27.26
Roadway Clear. (min.)	28.34	37.67	38.83
Incident Clearance (min.)	52.15	56.43	56.44
# of Events w/ RR/SIRV	1,087	1,199	20,485
RR/SIRV Responses	1,087	1,199	20,669
RR/SIRV Activities	1,175	1,281	22,687

OKEEB

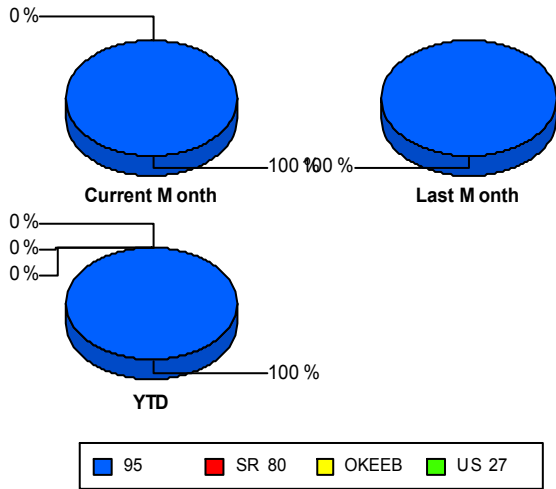
	<u>YTD</u>
Number of Events	2
Number of Incidents	2
TMC Detection (min.)	0.00
TMC Verification (min.)	12.48
TMC Response (min.)	7.78
RR Dispatch Time (min.)	4.42
RR Resp. Time (min.)	2.63
Event Clearance (min.)	54.35
Roadway Clear. (min.)	50.14
Incident Clearance (min.)	54.35
# of Events w/ RR/SIRV	2
RR/SIRV Responses	2
RR/SIRV Activities	1

SR 80

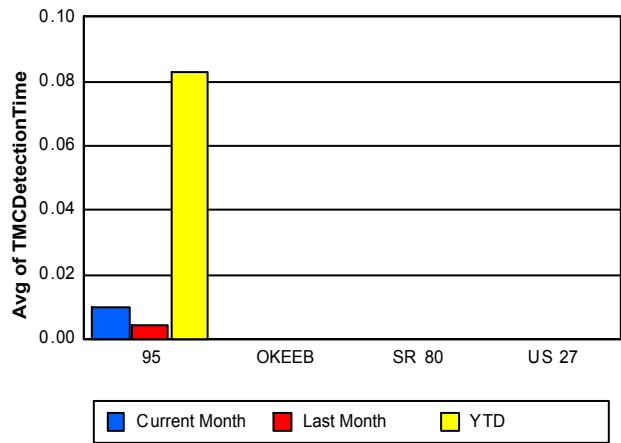
	<u>Current Month</u>	<u>YTD</u>
Number of Events	1	1
Number of Incidents	1	1
TMC Detection (min.)	0.00	0.00
TMC Verification (min.)	40.52	40.52
TMC Response (min.)		
RR Dispatch Time (min.)		
RR Resp. Time (min.)		
Event Clearance (min.)	730.37	730.37
Roadway Clear. (min.)	712.33	712.33
Incident Clearance (min.)	730.37	730.37
# of Events w/ RR/SIRV	0	0
RR/SIRV Responses	0	0
RR/SIRV Activities	0	0

	<u>YTD</u>
Number of Events	1
Number of Incidents	0
TMC Detection (min.)	0.00
TMC Verification (min.)	
TMC Response (min.)	
RR Dispatch Time (min.)	
RR Resp. Time (min.)	
Event Clearance (min.)	125.57
Roadway Clear. (min.)	
Incident Clearance (min.)	
# of Events w/ RR/SIRV	0
RR/SIRV Responses	0
RR/SIRV Activities	0

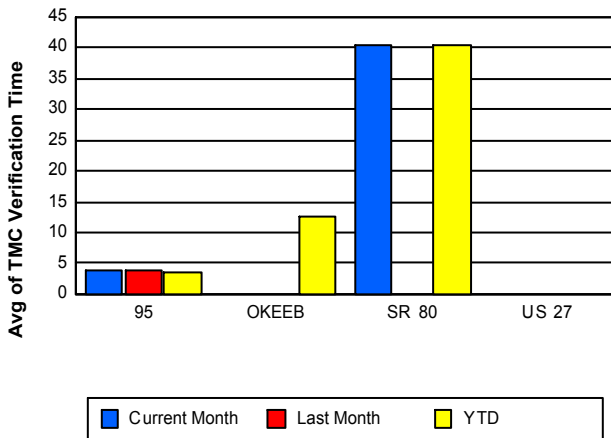
Number of Events / Roadway



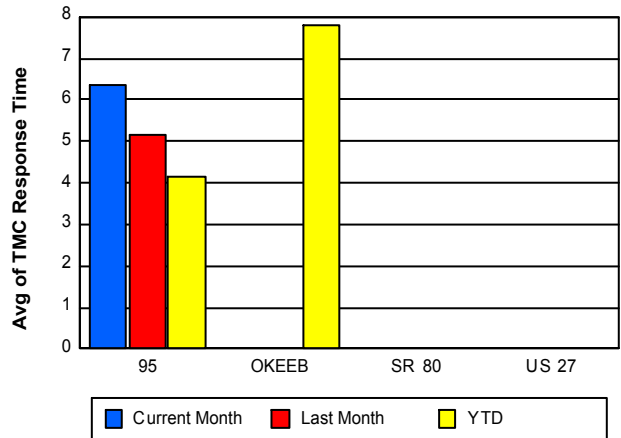
TMC Detection Time



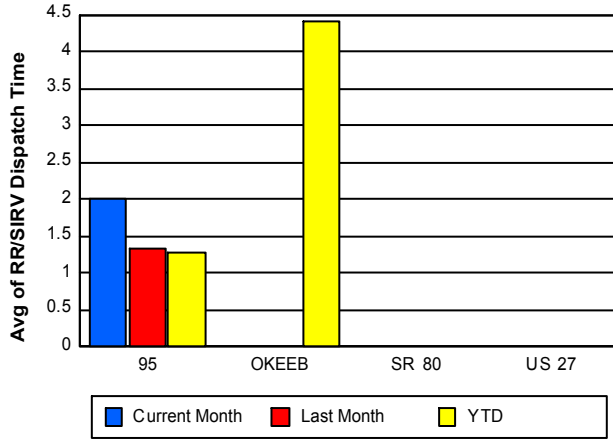
TMC Verification Time



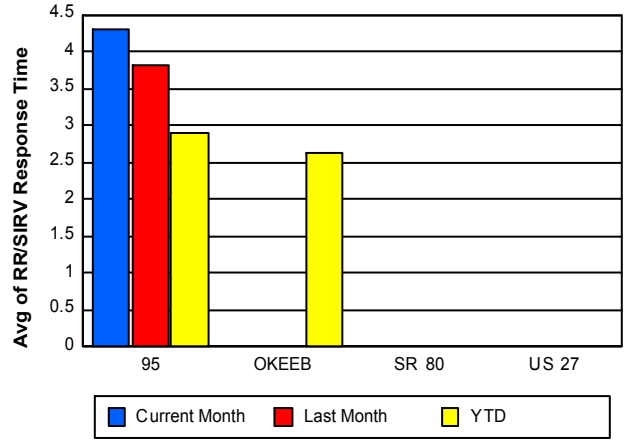
TMC Response Time



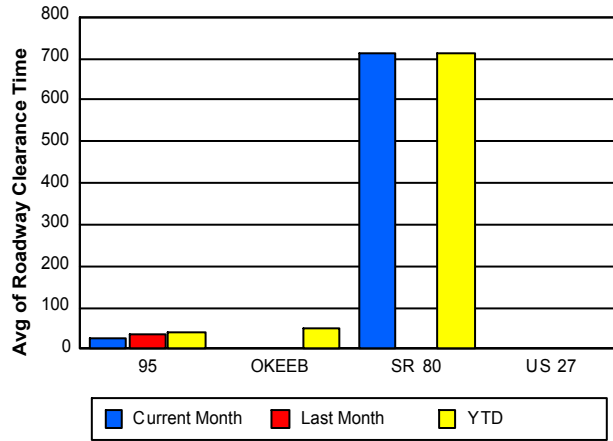
Road Ranger / SIRV Dispatch Time



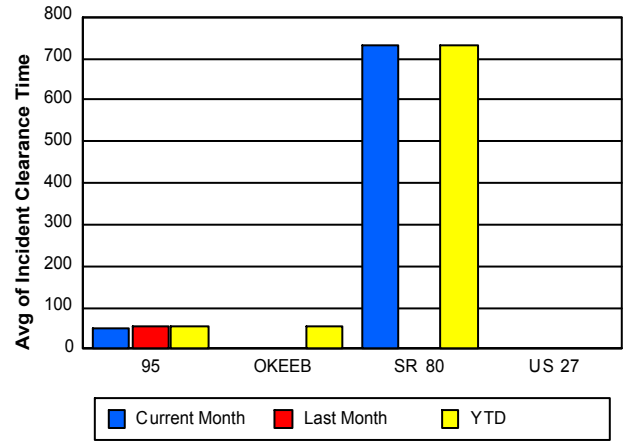
Road Ranger / SIRV Response Time



Roadway Clearance Time (2A)



Incident Clearance Time (3B)



Performance Measures by Event Type

Abandoned Vehicle

	<u>YTD</u>
Number of Events	797
Number of Incidents	3
TMC Detection (min.)	0.01
TMC Verification (min.)	0.53
TMC Response (min.)	0.67
RR Dispatch Time (min.)	0.24
RR Response Time (min.)	0.58
Event Clearance (min.)	189.70
Roadway Clearance (min.)	33.68
Incident Clearance (min.)	39.96
# of Events w/ RR/SIRV	643
RR/SIRV Assists	658
RR/SIRV Activities	672

Accident

	<u>Current Month</u>	<u>Last Month</u>	<u>YTD</u>
Number of Events	100	130	1,860
Number of Incidents	48	47	882
TMC Detection (min.)	0.11	0.04	0.14
TMC Verification (min.)	4.28	5.57	5.04
TMC Response (min.)	6.18	7.40	7.10
RR Dispatch Time (min.)	1.74	2.06	2.03
RR Response Time (min.)	4.45	5.34	5.16
Event Clearance (min.)	66.28	62.07	59.07
Roadway Clearance (min.)	48.33	43.36	47.03
Incident Clearance (min.)	79.17	73.00	69.89
# of Events w/ RR/SIRV	85	100	1,747
RR/SIRV Assists	85	100	1,826
RR/SIRV Activities	106	129	2,281

Congestion

	<u>YTD</u>
Number of Events	14
Number of Incidents	0
TMC Detection (min.)	0.02
TMC Verification (min.)	0.55
TMC Response (min.)	10.47
RR Dispatch Time (min.)	3.89
RR Response Time (min.)	9.08
Event Clearance (min.)	37.84
Roadway Clearance (min.)	
Incident Clearance (min.)	
# of Events w/ RR/SIRV	2
RR/SIRV Assists	2
RR/SIRV Activities	2

Debris on Roadway

	<u>Current Month</u>	<u>Last Month</u>	<u>YTD</u>
Number of Events	99	105	1,328
Number of Incidents	3	12	118
TMC Detection (min.)	0.00	0.00	0.07
TMC Verification (min.)	9.10	8.11	6.85
TMC Response (min.)	9.48	8.53	7.18
RR Dispatch Time (min.)	3.04	2.03	1.69
RR Response Time (min.)	6.41	6.54	5.49
Event Clearance (min.)	12.69	13.11	11.98
Roadway Clearance (min.)	15.02	14.46	16.06
Incident Clearance (min.)	16.92	16.91	19.42
# of Events w/ RR/SIRV	99	102	1,312
RR/SIRV Assists	99	102	1,323
RR/SIRV Activities	100	105	1,407

Disabled Vehicle

	<u>Current Month</u>	<u>Last Month</u>	<u>YTD</u>
Number of Events	952	1,065	16,706
Number of Incidents	15	23	293
TMC Detection (min.)	0.00	0.00	0.08
TMC Verification (min.)	3.93	3.38	3.04
TMC Response (min.)	6.00	4.50	3.61
RR Dispatch Time (min.)	1.93	1.18	1.16
RR Response Time (min.)	4.07	3.36	2.49
Event Clearance (min.)	23.42	22.85	16.78
Roadway Clearance (min.)	19.40	26.56	24.03
Incident Clearance (min.)	39.56	32.29	32.78
# of Events w/ RR/SIRV	845	959	16,369
RR/SIRV Assists	845	959	16,436
RR/SIRV Activities	926	1,021	17,903

Emergency Vehicles

	<u>Last Month</u>	<u>YTD</u>
Number of Events	3	8
Number of Incidents	3	6
TMC Detection (min.)	0.00	2.51
TMC Verification (min.)	0.00	2.80
TMC Response (min.)	2.04	1.08
RR Dispatch Time (min.)	1.98	0.89
RR Response Time (min.)	0.06	0.19
Event Clearance (min.)	18.78	25.43
Roadway Clearance (min.)	10.63	20.14
Incident Clearance (min.)	18.78	28.49
# of Events w/ RR/SIRV	3	8
RR/SIRV Assists	3	8
RR/SIRV Activities	3	8

Other

	<u>Current Month</u>	<u>Last Month</u>	<u>YTD</u>
Number of Events	121	59	340
Number of Incidents	0	0	7
TMC Detection (min.)	0.00	0.00	0.02
TMC Verification (min.)	0.68	0.69	5.07
TMC Response (min.)	8.75	7.04	13.36
RR Dispatch Time (min.)	2.26	1.87	3.31
RR Response Time (min.)	6.10	4.96	9.66
Event Clearance (min.)	19.32	13.54	21.82
Roadway Clearance (min.)			17.35
Incident Clearance (min.)			21.04
# of Events w/ RR/SIRV	40	27	208
RR/SIRV Assists	40	27	210
RR/SIRV Activities	23	15	190

Pedestrian

	<u>YTD</u>
Number of Events	32
Number of Incidents	0
TMC Detection (min.)	0.04
TMC Verification (min.)	1.39
TMC Response (min.)	1.38
RR Dispatch Time (min.)	0.27
RR Response Time (min.)	1.11
Event Clearance (min.)	15.13
Roadway Clearance (min.)	
Incident Clearance (min.)	
# of Events w/ RR/SIRV	32
RR/SIRV Assists	32
RR/SIRV Activities	33

Police Activity

	<u>Current Month</u>	<u>Last Month</u>	<u>YTD</u>
Number of Events	18	11	79
Number of Incidents	9	5	52
TMC Detection (min.)	0.10	0.00	0.17
TMC Verification (min.)	0.43	0.00	1.46
TMC Response (min.)	3.86	0.00	8.55
RR Dispatch Time (min.)	2.11	0.00	4.56
RR Response Time (min.)	1.74	0.00	3.91
Event Clearance (min.)	21.84	45.42	46.23
Roadway Clearance (min.)	13.27	61.48	42.60
Incident Clearance (min.)	19.43	69.90	59.21
# of Events w/ RR/SIRV	8	2	51
RR/SIRV Assists	8	2	57
RR/SIRV Activities	8	2	63

Vehicle Fire

	<u>Current Month</u>	<u>Last Month</u>	<u>YTD</u>
Number of Events	5	4	27
Number of Incidents	4	3	17
TMC Detection (min.)	0.00	0.00	0.00
TMC Verification (min.)	3.33	0.00	3.01
TMC Response (min.)	3.32		4.49
RR Dispatch Time (min.)	0.76		1.45
RR Response Time (min.)	2.56		3.04
Event Clearance (min.)	42.45	121.12	362.20
Roadway Clearance (min.)	36.94	114.03	51.34
Incident Clearance (min.)	44.77	155.03	67.32
# of Events w/ RR/SIRV	5	0	22
RR/SIRV Assists	5	0	22
RR/SIRV Activities	7	0	28

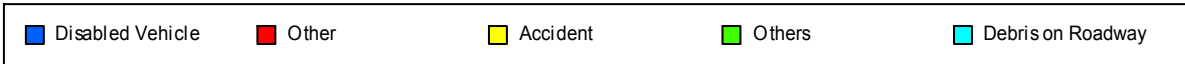
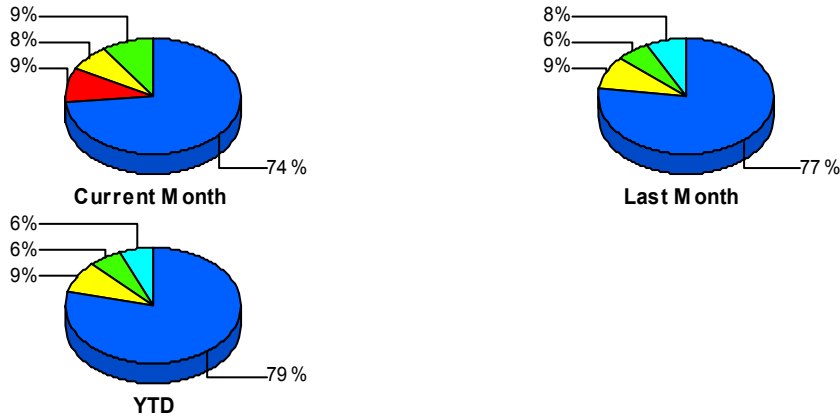
Visibility

	<u>YTD</u>
Number of Events	1
Number of Incidents	1
TMC Detection (min.)	0.00
TMC Verification (min.)	0.00
TMC Response (min.)	0.02
RR Dispatch Time (min.)	0.00
RR Response Time (min.)	0.02
Event Clearance (min.)	39.62
Roadway Clearance (min.)	36.55
Incident Clearance (min.)	39.62
# of Events w/ RR/SIRV	1
RR/SIRV Assists	1
RR/SIRV Activities	1

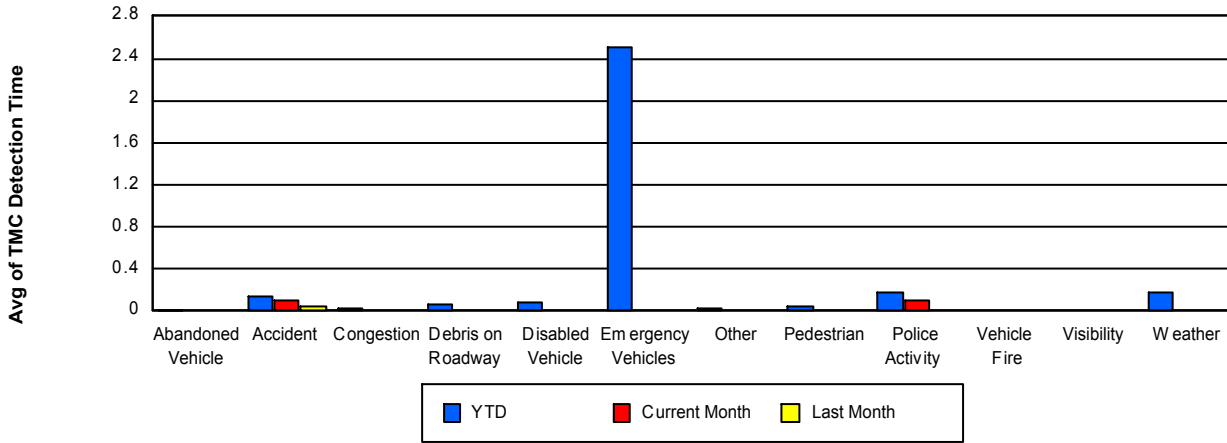
Weather

	<u>YTD</u>
Number of Events	3
Number of Incidents	2
TMC Detection (min.)	0.17
TMC Verification (min.)	12.54
TMC Response (min.)	18.52
RR Dispatch Time (min.)	2.63
RR Response Time (min.)	15.89
Event Clearance (min.)	136.82
Roadway Clearance (min.)	222.06
Incident Clearance (min.)	188.12
# of Events w/ RR/SIRV	2
RR/SIRV Assists	6
RR/SIRV Activities	6

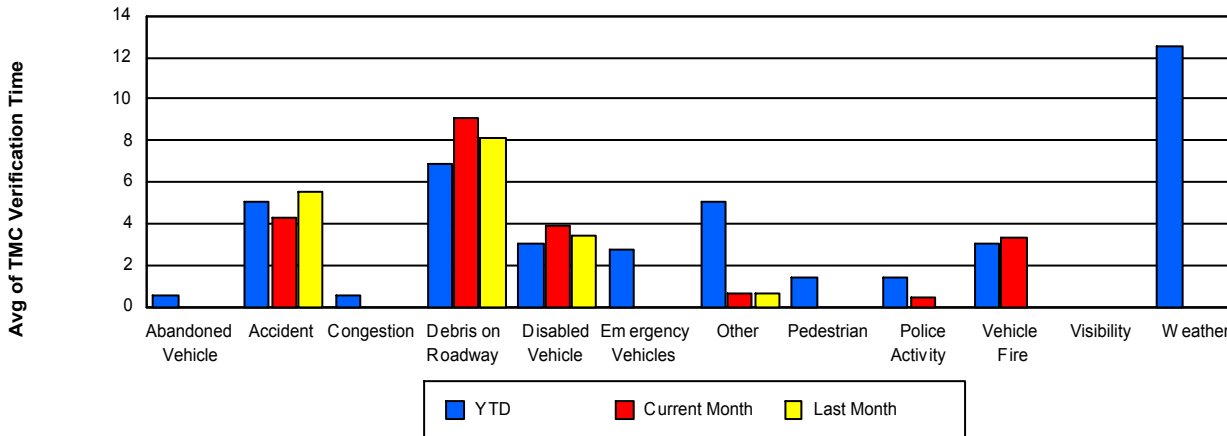
Number of Events / Event Type



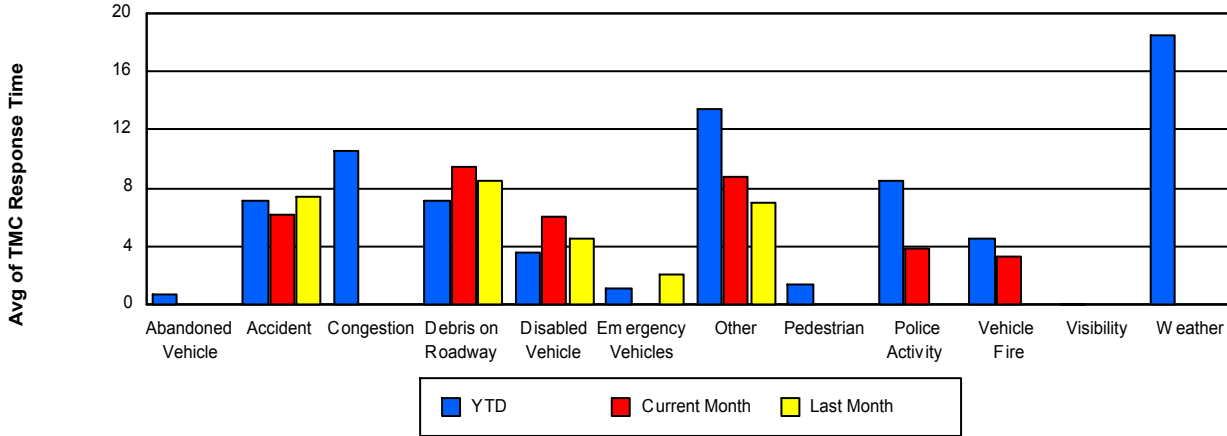
TMC Detection Time



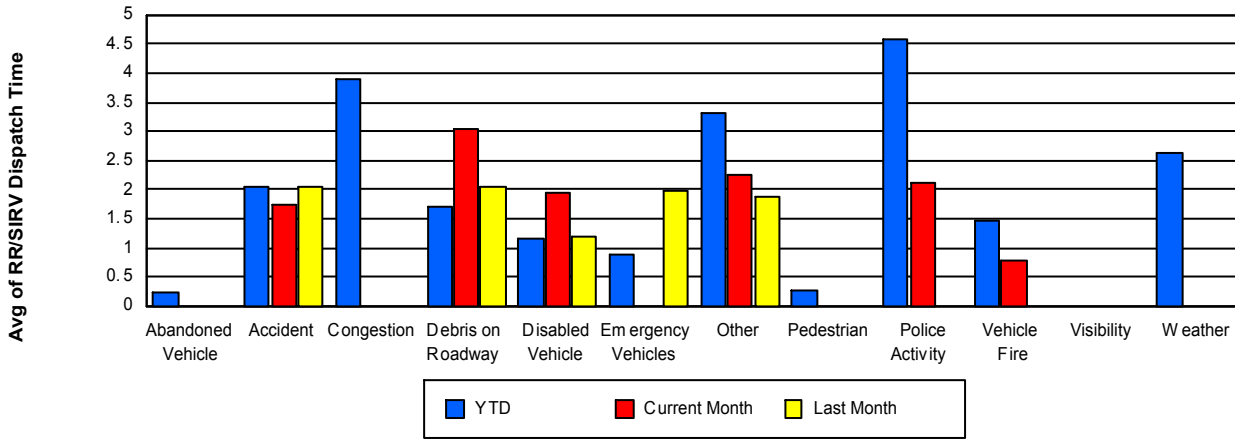
TMC Verification Time



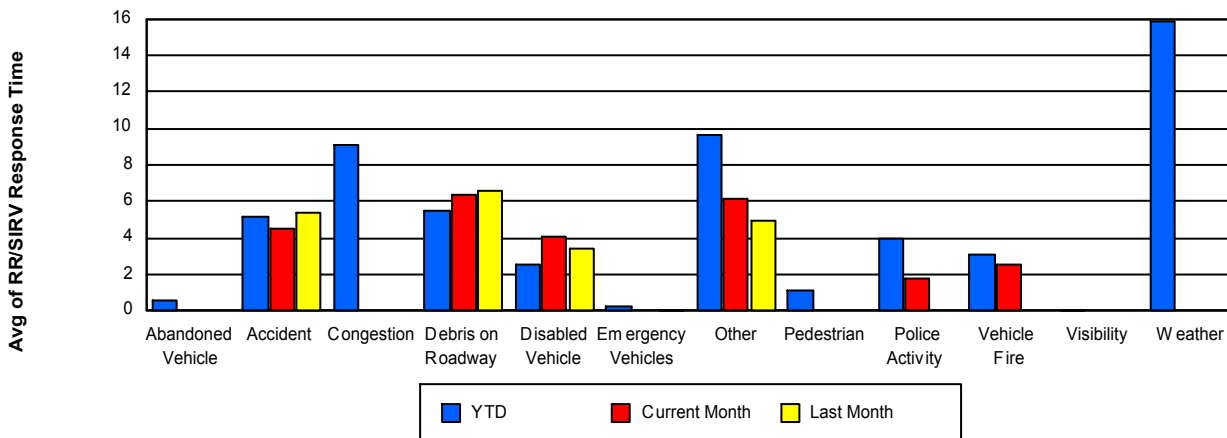
TMC Response Time



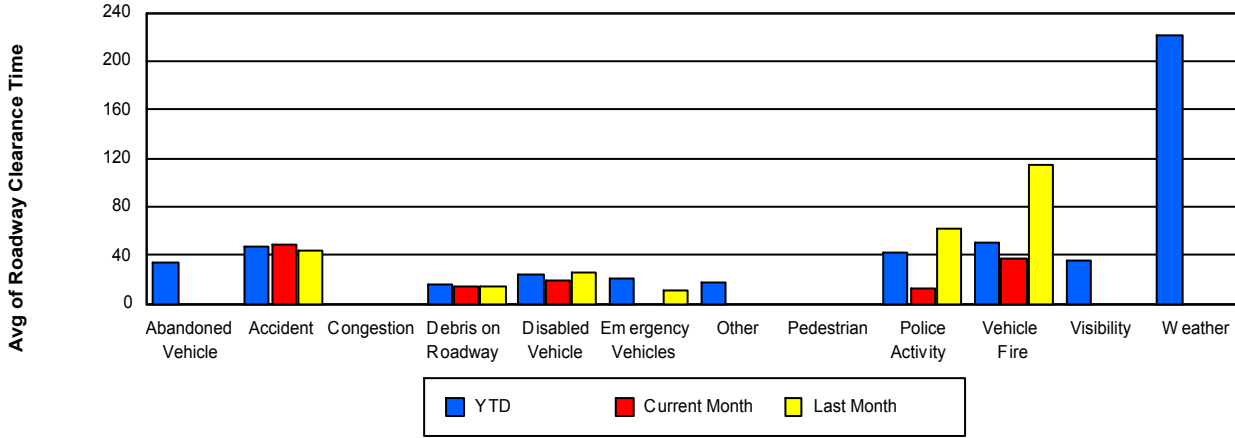
Road Ranger / SIRV Dispatch Time



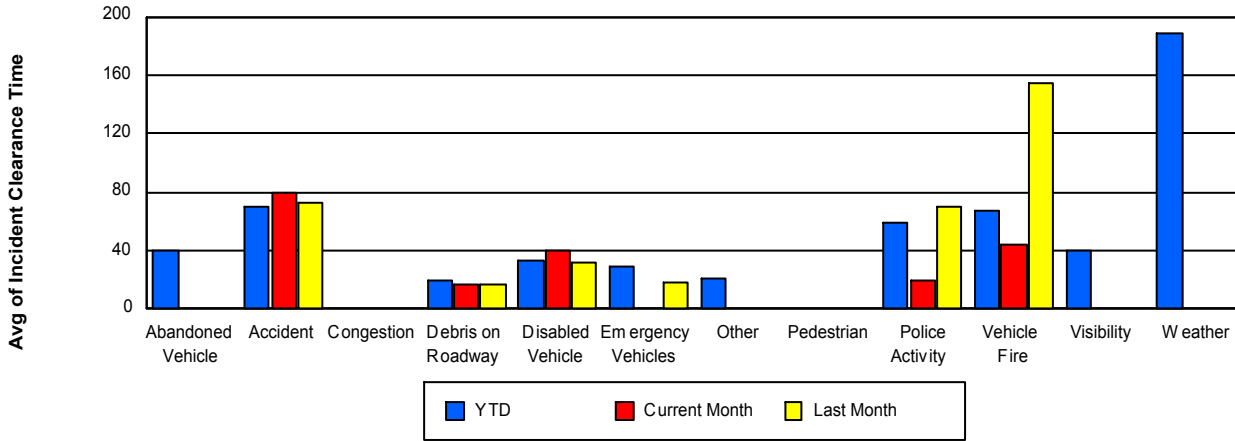
Road Ranger / SIRV Response Time



Roadway Clearance Time (2A)



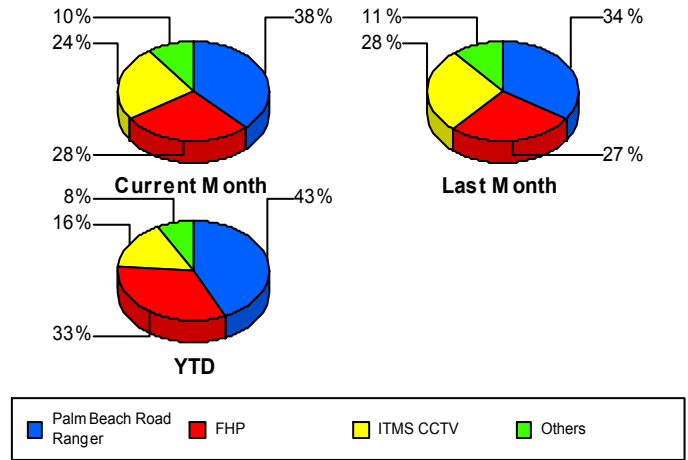
Incident Clearance Time (3B)



Incident Detection Methods

	Current Month	Last Month	YTD
Broward CCTV	0	3	4
Broward Road Ranger	0	1	9
Broward TMC	0	0	1
Construction CEI	0	0	6
District 4	4	3	53
FDOT Maintenance	1	0	3
FHP	22	25	459
ITMS	2	1	9
ITMS CCTV	19	26	217
Media	0	1	1
Motorist	1	0	20
Palm Beach Road Rang	30	32	593
Road Watcher	0	0	2
SmarTraveler (511)	0	1	4
Total	79	93	1,381

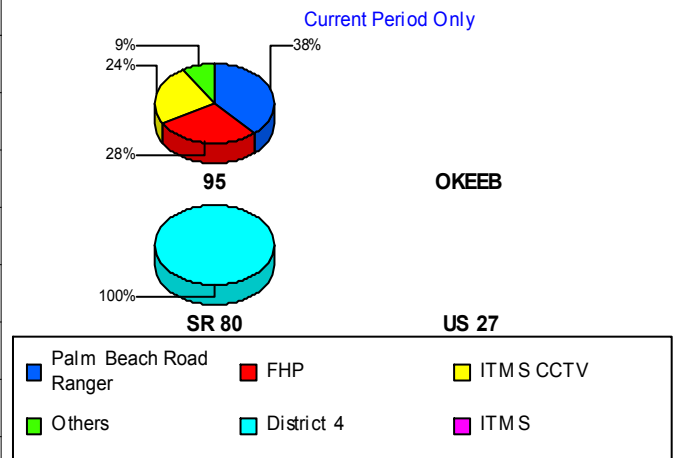
Total Incidents by Detection Method



Incident Detection Methods by Roadway

		Current Month	Last Month	YTD
95	Broward CCTV	0	3	4
	Broward Road Ranger	0	1	9
	Broward TMC	0	0	1
	Construction CEI	0	0	6
	District 4	3	3	52
	FDOT Maintenance	1	0	3
	FHP	22	25	457
	ITMS	2	1	9
	ITMS CCTV	19	26	217
	Media	0	1	1
	Motorist	1	0	20
	Palm Beach Road Rang	30	32	593

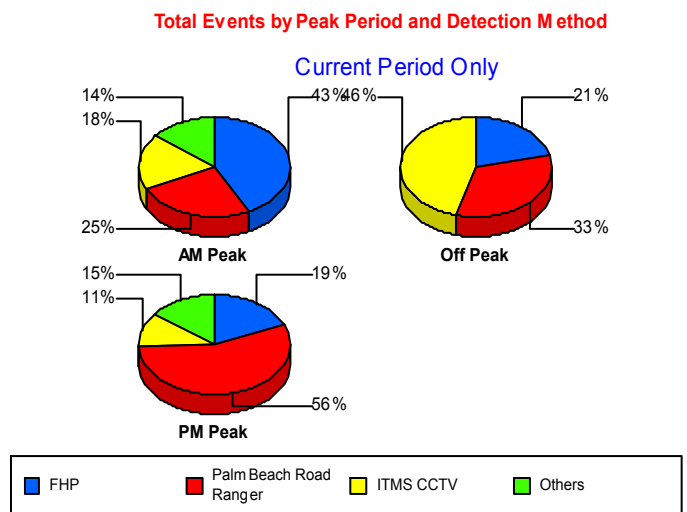
Total Events by Roadway and Detection Method



		Current Month	Last Month	YTD
95	Road Watcher	0	0	2
	SmarTraveler (511)	0	1	4
	Total	78	93	1,378
OKEEB	FHP	0	0	2
	Total	0	0	2
SR 80	District 4	1	0	1
	Total	1	0	1
Total		79	93	1,381

Incident Detection Methods by Peak Period

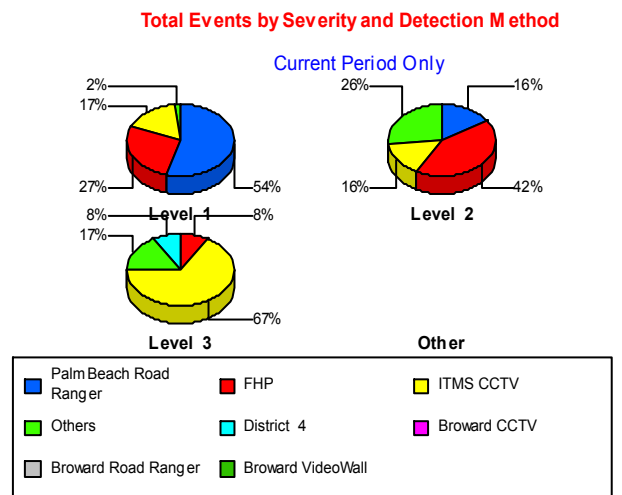
		Current Month	Last Month	YTD
AM Peak	Broward CCTV	0	1	1
	Broward Road Ranger	0	0	3
	Broward TMC	0	0	1
	Construction CEI	0	0	1
	District 4	2	2	23
	FDOT Maintenance	1	0	1
	FHP	12	9	124
	ITMS	1	0	2
	ITMS CCTV	5	7	50
	Media	0	1	1
	Motorist	0	0	6
	Palm Beach Road Rang	7	9	146
	SmarTraveler (511)	0	0	1
	Total	28	29	360
	Off Peak	Broward CCTV	0	0
Broward Road Ranger		0	1	3
Construction CEI		0	0	5
District 4		0	1	23
FDOT Maintenance		0	0	2
FHP		5	12	253
ITMS		0	1	3



		Current Month	Last Month	YTD
Off Peak	ITMS CCTV	11	14	107
	Motorist	0	0	10
	Palm Beach Road Rang	8	17	310
	Road Watcher	0	0	2
	SmarTraveler (511)	0	0	1
	Total	24	46	720
PM Peak	Broward CCTV	0	2	2
	Broward Road Ranger	0	0	3
	District 4	2	0	7
	FHP	5	4	82
	ITMS	1	0	4
	ITMS CCTV	3	5	60
	Motorist	1	0	4
	Palm Beach Road Rang	15	6	137
	SmarTraveler (511)	0	1	2
	Total	27	18	301
Total	79	93	1,381	

Incident Detection Methods by Severity

		Current Month	Last Month	YTD
Level 1	Broward CCTV	0	3	4
	Broward Road Ranger	0	0	7
	Broward TMC	0	0	1
	Construction CEI	0	0	2
	District 4	1	2	35
	FDOT Maintenance	0	0	1
	FHP	13	12	173
	ITMS	0	1	4
	ITMS CCTV	8	11	103
	Media	0	1	1
	Motorist	0	0	10
	Palm Beach Road Rang	26	26	382



		Current Month	Last Month	YTD
Level 1	SmarTraveler (511)	0	1	3
	Total	48	57	726
Level 2	Broward Road Ranger	0	1	2
	Construction CEI	0	0	2
	District 4	2	1	15
	FDOT Maintenance	1	0	1
	FHP	8	11	225
	ITMS	1	0	4
	ITMS CCTV	3	10	77
	Motorist	1	0	10
	Palm Beach Road Rang	3	6	169
	Road Watcher	0	0	1
	SmarTraveler (511)	0	0	1
	Total	19	29	507
	Level 3	Construction CEI	0	0
District 4		1	0	3
FDOT Maintenance		0	0	1
FHP		1	2	61
ITMS		1	0	1
ITMS CCTV		8	5	37
Palm Beach Road Rang		1	0	42
Road Watcher		0	0	1
Total		12	7	148
Total		79	93	1,381

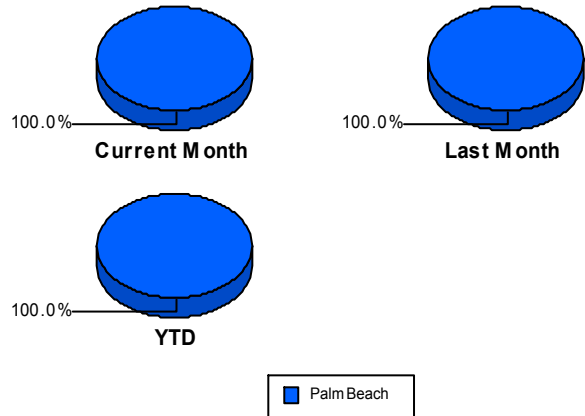
Road Ranger / SIRV Performance Measures

Road Ranger / SIRV Performance By County

Values presented are:
 - Total Events with a RR/SIRV Response
 - Total RR/SIRV Responses,
 - Total Activities Performed

	Current Mo	Last Month	YTD
Palm Beach	1,442	1,533	25,109
	1,489	1,573	26,046
	1,595	1,666	27,779

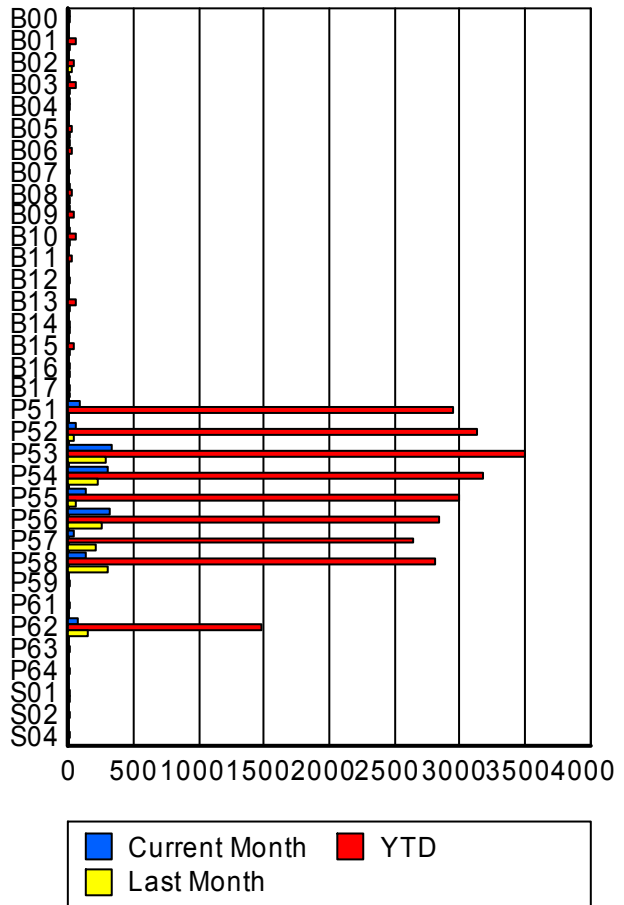
RR/SIRV Responses per County



Road Ranger / SIRV Performance By Truck

	Current Mo	Last Month	YTD
B00	1	0	13
	1	0	13
	1	0	14
B01	0	4	52
	0	4	52
	0	4	55
B02	0	22	39
	0	23	41
	0	24	43
B03	3	3	49
	3	3	51
	3	3	53
B04	14	0	15
	14	0	15
	15	0	16
B05	0	4	19
	0	4	19
	0	4	20
B06	7	0	22
	7	0	22
	9	0	25
B07	0	0	4
	0	0	4
	0	0	4
B08	1	3	25
	1	3	26
	1	3	26

RR/SIRV Responses per Truck



	Current Mo	Last Month	YTD
B09	10	0	35
	10	0	36
	11	0	38
B10	4	3	55
	4	3	55
	4	3	63
B11	0	0	18
	0	0	18
	0	0	19
B12	0	0	6
	0	0	6
	0	0	6
B13	0	15	56
	0	15	56
	0	17	59
B14	0	1	9
	0	1	9
	0	1	10
B15	0	1	33
	0	1	34
	0	1	36
B16	0	2	14
	0	2	14
	0	2	15
B17	0	4	12
	0	4	12
	0	4	12
P51	86	0	2,930
	87	0	2,949
	90	0	3,142
P52	55	43	3,106
	55	43	3,137
	56	44	3,375
P53	322	283	3,481
	325	285	3,505
	349	298	3,721
P54	290	227	3,144
	292	229	3,174
	315	243	3,388
P55	130	61	2,981
	131	61	2,998
	137	67	3,197
P56	308	249	2,811
	313	253	2,839
	332	271	3,035

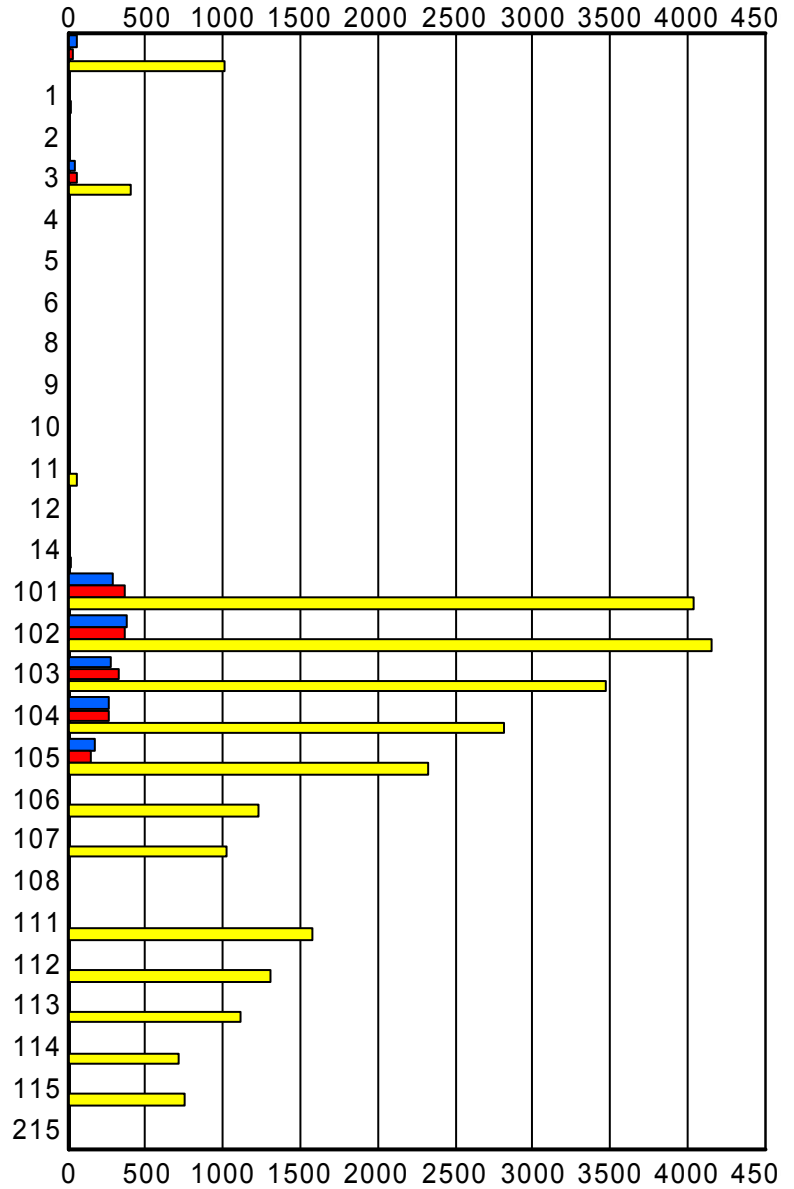
	Current Mo	Last Month	YTD
P57	33	201	2,613
	35	201	2,636
	35	222	2,835
P58	135	295	2,787
	136	298	2,814
	149	307	2,968
P59	0	0	7
	0	0	7
	0	0	7
P61	0	0	7
	0	0	7
	0	0	7
P62	74	137	1,466
	75	139	1,485
	88	147	1,578
P63	0	0	4
	0	0	4
	0	0	4
P64	0	0	3
	0	0	3
	0	0	3
S01	0	1	1
	0	1	1
	0	1	1
S02	0	0	3
	0	0	3
	0	0	3
S04	0	0	1
	0	0	1
	0	0	1

Road Ranger / SIRV Performance By Beat

	Current Mo	Last Month	YTD
	54	35	1,001
	55	35	1,010
	59	35	1,066
1	0	0	21
	0	0	21
	0	0	22
2	0	0	10
	0	0	10
	0	0	10
3	38	51	390
	38	53	400
	42	56	427
4	1	0	9
	1	0	9
	1	0	11
5	0	0	2
	0	0	2
	0	0	2
6	0	0	2
	0	0	2
	0	0	2
8	1	0	1
	1	0	1
	1	0	1
9	0	0	1
	0	0	1
	0	0	1
10	0	0	3
	0	0	3
	0	0	3
11	0	10	49
	0	10	50
	0	10	52
12	0	0	2
	0	0	2
	0	0	2
14	0	0	18
	0	0	19
	0	0	21
101	289	355	4,006
	293	362	4,043
	312	380	4,293
102	374	363	4,115
	379	366	4,147
	405	389	4,455

Values presented are:
 - Total Events with a RR/SIRV Response
 - Total RR/SIRV Responses,
 - Total Activities Performed

RR/SIRV Responses per Beat



■ Current Month
 ■ Last Month
 ■ YTD

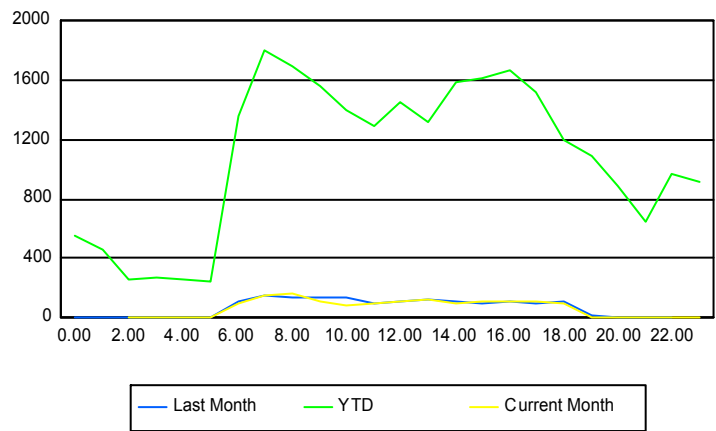
	Current Mo	Last Month	YTD
103	280	321	3,445
	281	323	3,469
	306	352	3,723
104	262	264	2,794
	266	264	2,817
	278	275	3,018
105	171	149	2,295
	174	151	2,323
	190	159	2,468
106	1	0	1,215
	1	0	1,226
	1	0	1,300
107	0	1	1,005
	0	1	1,017
	0	2	1,067
108	0	0	1
	0	0	1
	0	0	1
111	0	0	1,566
	0	0	1,581
	0	0	1,680
112	0	0	1,295
	0	0	1,308
	0	0	1,389
113	0	0	1,088
	0	0	1,109
	0	0	1,180
114	0	0	710
	0	0	716
	0	0	758
115	0	8	750
	0	8	757
	0	8	825
215	0	0	2
	0	0	2
	0	0	2

Road Ranger / SIRV Performance By Time of Day

Values presented are:
 - Total Events with a RR/SIRV Response
 - Total RR/SIRV Responses,
 - Total Activities Performed

	Current Mo	Last Month	YTD
12AM-1AM	0	3	533
	0	3	554
	0	3	587
1AM-2AM	0	1	431
	0	1	455
	0	1	496
2AM-3AM	2	2	249
	2	2	262
	2	2	274
3AM-4AM	0	1	257
	0	1	277
	0	1	301
4AM-5AM	1	0	232
	1	0	257
	1	0	278
5AM-6AM	4	3	214
	4	3	244
	5	3	262
6AM-7AM	89	116	1,323
	92	117	1,361
	98	124	1,456
7AM-8AM	153	148	1,755
	157	148	1,800
	166	159	1,913
8AM-9AM	158	134	1,629
	164	135	1,690
	181	147	1,803
9AM-10AM	110	131	1,509
	114	139	1,566
	120	148	1,688
10AM-11AM	83	135	1,358
	85	144	1,406
	91	149	1,507
11AM-12PM	95	94	1,248
	98	95	1,294
	108	101	1,378
12PM-1PM	108	110	1,387
	114	115	1,452
	122	122	1,554

Number of Responses / Hour of the Day



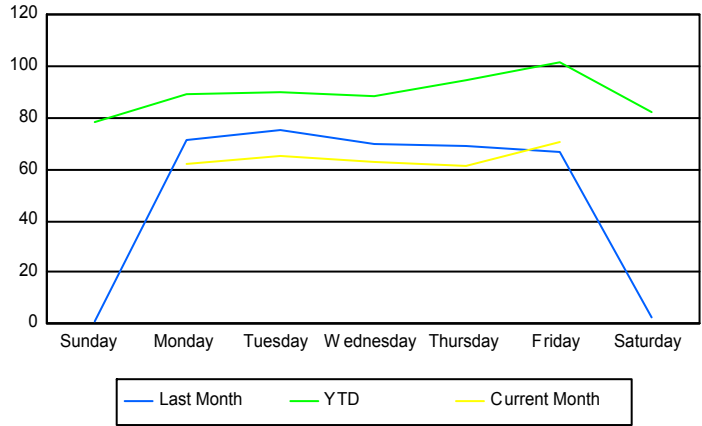
	Current Mo	Last Month	YTD
1PM-2PM	117	117	1,263
	121	121	1,326
	129	126	1,429
2PM-3PM	91	111	1,557
	91	114	1,592
	97	121	1,706
3PM-4PM	104	98	1,574
	109	101	1,614
	114	108	1,707
4PM-5PM	109	105	1,631
	111	106	1,669
	118	108	1,783
5PM-6PM	114	100	1,470
	117	101	1,517
	122	111	1,607
6PM-7PM	95	104	1,160
	99	106	1,202
	110	111	1,266
7PM-8PM	8	16	1,047
	9	17	1,085
	9	17	1,139
8PM-9PM	0	3	852
	0	3	884
	0	3	936
9PM-10PM	0	0	621
	0	0	654
	0	0	689
10PM-11PM	0	1	934
	0	1	972
	0	1	1,039
11PM-12AM	1	0	875
	1	0	913
	2	0	981

Road Ranger / SIRV Performance By Day of Week

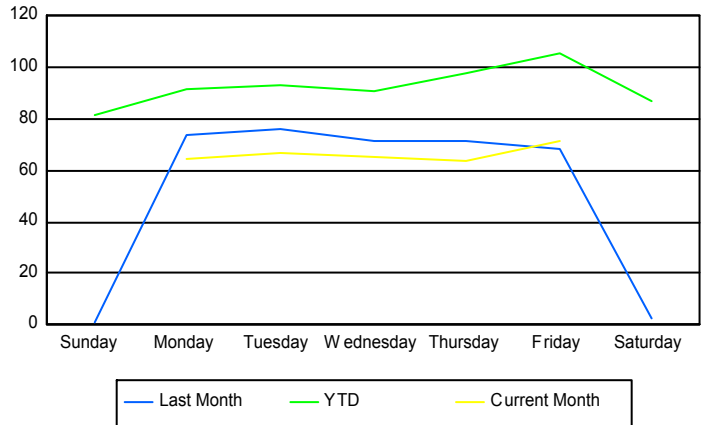
Values presented are:
 - Total Events with a RR/SIRV Response
 - Total RR/SIRV Responses,
 - Total Activities Performed

	Current Mo	Last Month	YTD
Sunday	0	1	2,676
	0	1	2,793
	0	1	3,006
Monday	241	349	3,710
	250	360	3,823
	267	384	4,045
Tuesday	253	365	3,824
	260	369	3,954
	275	390	4,176
Wednesday	308	274	3,764
	321	282	3,881
	351	294	4,135
Thursday	301	273	4,003
	314	281	4,146
	335	302	4,433
Friday	341	265	4,311
	344	273	4,454
	367	288	4,797
Saturday	0	7	2,857
	0	7	2,995
	0	7	3,187

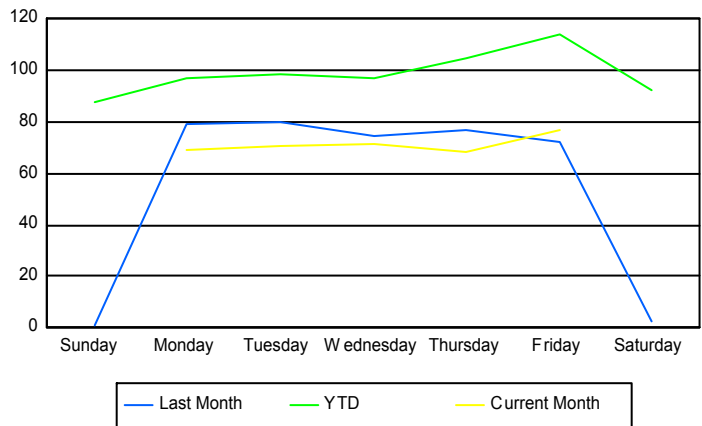
Avg # of events with a RR/SIRV Response per Day of the Week



Avg # of RR/SIRV Responses per Day of the Week



Avg # of RR/SIRV Activities Performed per Day of the Week



Road Ranger/ SIRV Responses per Time of Day and Day of Week

