



Monthly Performance Measures Report Palm Beach County



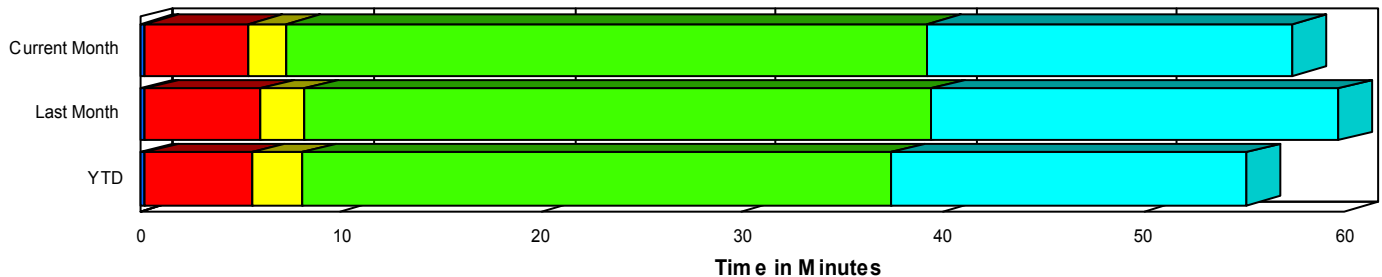
Created on:
November 05, 2007
10:10 am

Period From Oct 1, 2007 to Oct 31, 2007

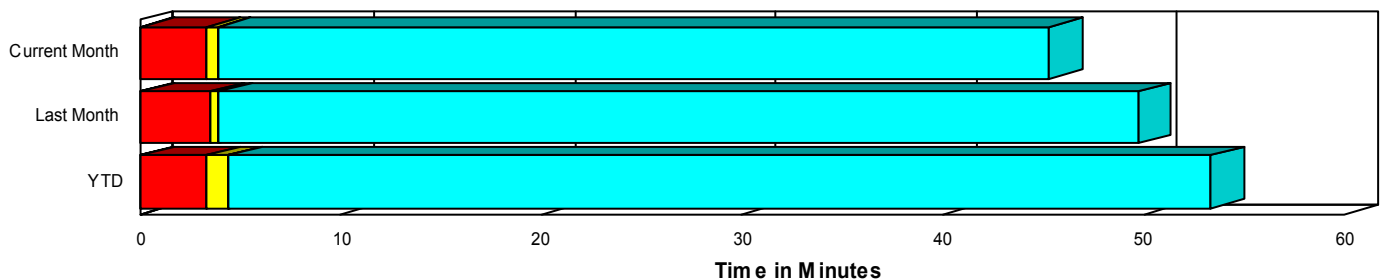
Performance Measures Summary

	Traffic Events (No Lanes Blocked)			Incidents (Lanes Blocked)		
	<u>This Month</u>	<u>Last Month</u>	<u>YTD</u>	<u>This Month</u>	<u>Last Month</u>	<u>YTD</u>
Number of Events	2,699	2,666	26,673	212	211	1,895
TMC Detection (min.)	0.06	0.07	0.08	0.21	0.22	0.26
TMC Verification (min.)	3.27	3.43	3.25	5.24	5.81	5.30
TMC Response (min.)	3.92	3.96	4.43	7.23	8.15	7.92
RR Dispatch Time (min.)	0.83	0.93	1.42	1.32	1.27	1.37
RR Response Time (min.)	3.09	3.03	3.01	5.91	6.90	6.55
Roadway Clearance (min.)				38.90	39.50	37.53
Event Clearance (min.)	45.42	49.83	53.44	56.82	59.59	53.94
# of Events w/ RR/SIRV	2,584	2,558	25,438	206	206	1,854
RR/SIRV Responses	2,661	2,646	26,287	272	259	2,354
RR/SIRV Activities	2,813	2,809	27,902	302	283	2,713

Incident Clearance TimeLine



Traffic Event(Non-Lane Blockage) Time-Line



<ul style="list-style-type: none"> ■ Avg. TMC Detection Time ■ Avg. Time from TMC Detection to TMC Verification ■ Avg. Time from TMC Verification to TMC Response 	<ul style="list-style-type: none"> ■ Avg. Time from TMC Response to Roadway Clearance* ■ Avg. Time from Roadway Clearance to Incident/Event Clearance**
---	--

* Roadway clearance equals all travel lanes open

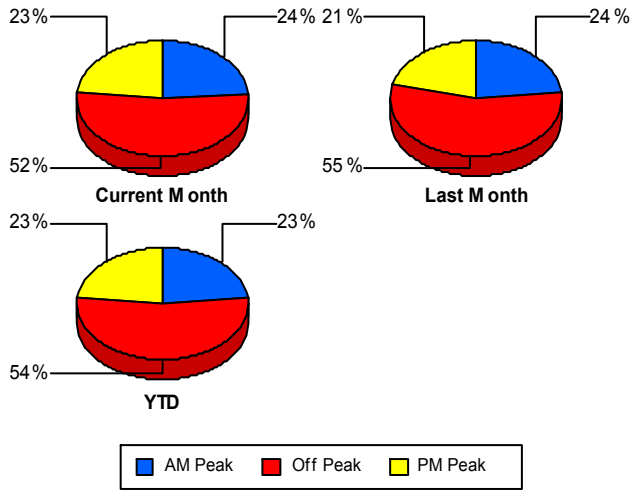
** Incident clearance equals time when last responder has left the scene

Performance Measures by Peak Period

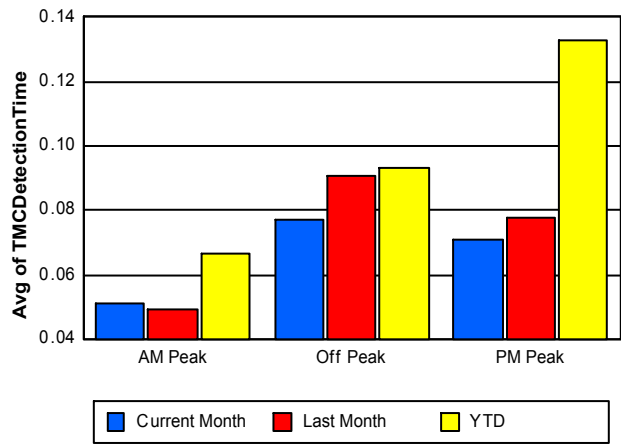
Note: AM peak period is defined as 6am to 10am and PM peak period is defined as 3pm to 7pm.

	AM Peak			Off Peak			PM Peak		
	Current Month	Last Month	YTD	Current Month	Last Month	YTD	Current Month	Last Month	YTD
Number of Events	707	683	6,660	1,527	1,583	15,348	677	611	6,560
Number of Incidents	58	54	484	104	121	958	50	36	453
TMC Detection (min.)	0.05	0.05	0.07	0.08	0.09	0.09	0.07	0.08	0.13
TMC Verification (min.)	2.64	2.95	2.57	3.74	4.15	3.58	3.50	2.89	3.77
TMC Response (min.)	3.47	3.73	3.36	4.50	4.73	4.72	4.14	3.69	5.87
RR Dispatch Time (min.)	0.81	1.14	0.72	0.98	1.01	1.31	0.69	0.62	2.39
RR Response Time (min.)	2.67	2.58	2.65	3.53	3.72	3.41	3.45	3.07	3.50
Event Clearance (min.)	40.38	47.24	45.22	56.70	50.35	62.55	28.81	54.76	40.64
Roadway Clearance (min.)	34.58	33.47	33.49	41.45	42.04	41.86	38.61	40.04	32.68
Incident Clearance (min.)	51.94	48.19	49.86	58.20	62.82	58.06	59.63	65.85	49.62
# of Events w/ RR/SIRV	683	657	6,426	1,453	1,523	14,543	654	584	6,323
RR/SIRV Responses	720	687	6,736	1,537	1,620	15,334	676	598	6,571
RR/SIRV Activities	770	740	7,169	1,652	1,736	16,521	693	616	6,925

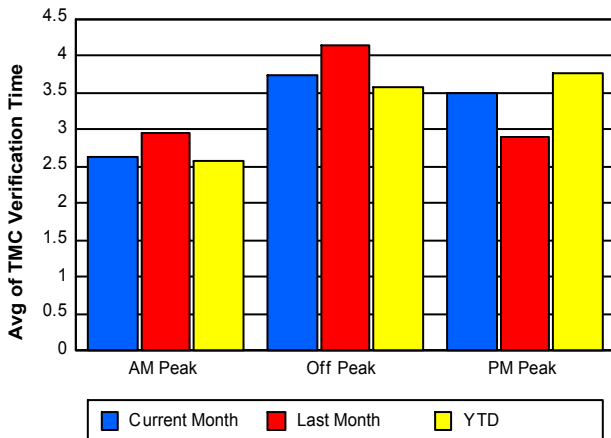
Number of Events / Peak Period



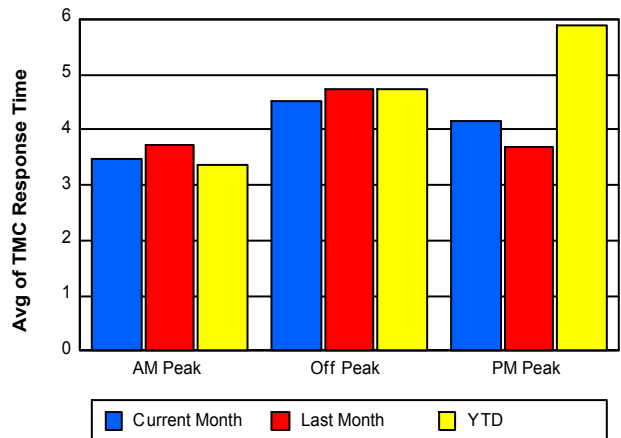
TMC Detection Time



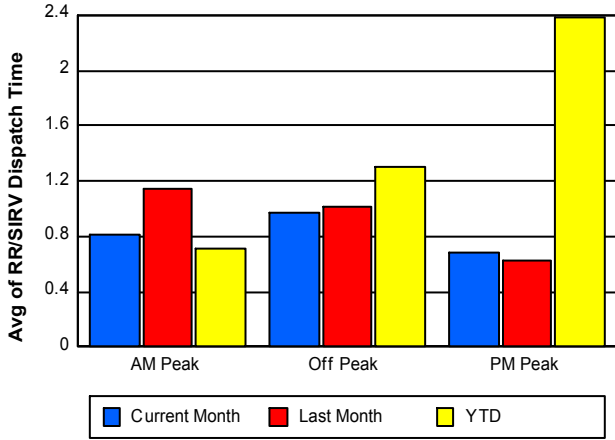
TMC Verification Time



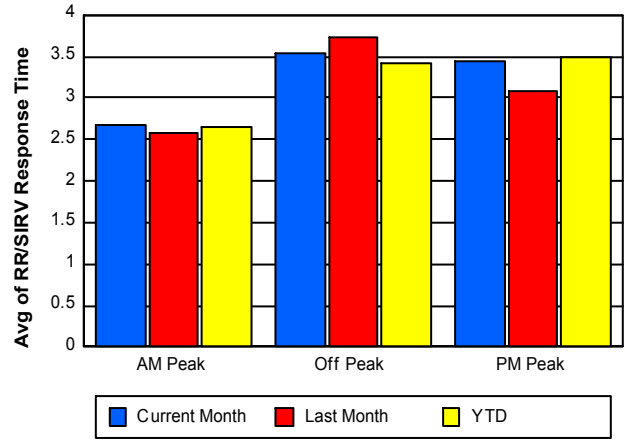
TMC Response Time



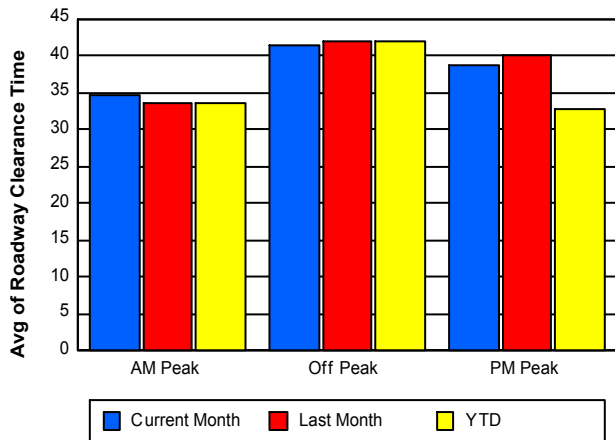
Road Ranger / SIRV Dispatch Time



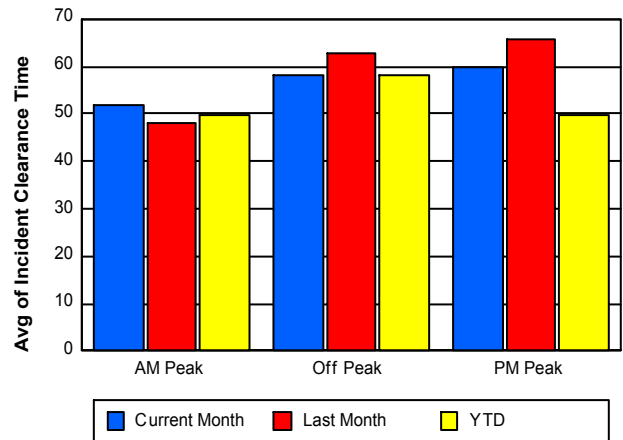
Road Ranger / SIRV Response Time



Roadway Clearance Time (2A)



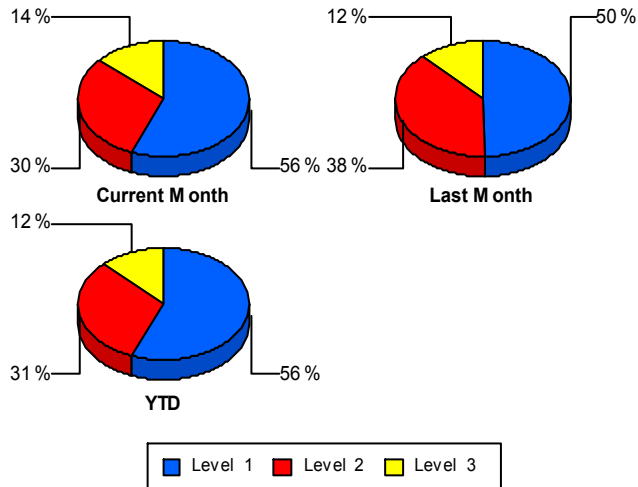
Incident Clearance Time (3B)



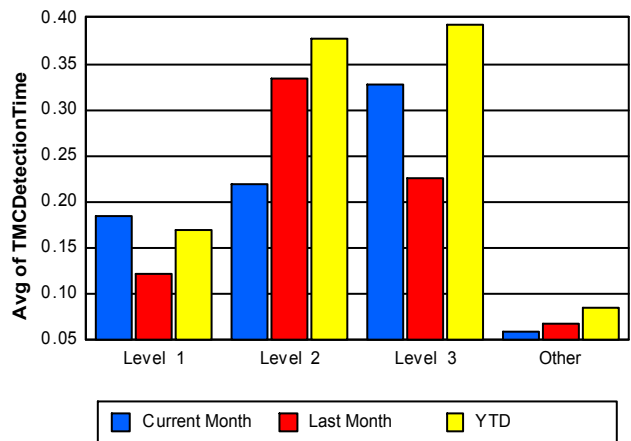
Performance Measures by Severity

	Level 1			Level 2			Level 3			Other		
	<u>This Month</u>	<u>Last Month</u>	<u>YTD</u>	<u>This Month</u>	<u>Last Month</u>	<u>YTD</u>	<u>This Month</u>	<u>Last Month</u>	<u>YTD</u>	<u>This Month</u>	<u>Last Month</u>	<u>YTD</u>
Number of Events	119	105	1,064	64	81	596	29	25	235	2,699	2,666	26,673
Number of Incidents	119	105	1,064	64	81	596	29	25	235	0	0	0
TMC Detection (min.)	0.19	0.12	0.17	0.22	0.33	0.38	0.33	0.23	0.39	0.06	0.07	0.08
TMC Verification (min.)	3.56	2.54	3.26	7.06	8.87	8.21	8.15	9.62	7.12	3.27	3.43	3.25
TMC Response (min.)	5.50	4.11	5.16	9.04	11.77	11.03	10.64	13.34	12.69	3.92	3.96	4.43
RR Dispatch Time (min.)	1.23	0.76	1.04	1.31	1.45	1.57	1.76	2.90	2.45	0.83	0.93	1.42
RR Resp. Time (min.)	4.27	3.39	4.14	7.73	10.31	9.46	8.88	10.44	10.23	3.09	3.03	3.01
Event Clearance (min.)	37.02	35.24	33.05	67.09	71.87	69.01	115.43	122.06	110.35	45.42	49.83	53.44
Roadway Clear. (min.)	14.57	13.24	12.93	57.86	58.68	56.43	96.89	87.71	100.96			
Incident Clearance (min.)	37.02	35.24	33.05	67.09	71.87	69.01	115.43	122.06	110.35			
# of Events w/ RR/SIRV	117	102	1,045	63	81	593	26	23	216	2,584	2,558	25,438
RR/SIRV Responses	135	119	1,177	90	108	827	47	32	350	2,661	2,646	26,287
RR/SIRV Activities	152	135	1,366	97	115	941	53	33	406	2,813	2,809	27,902

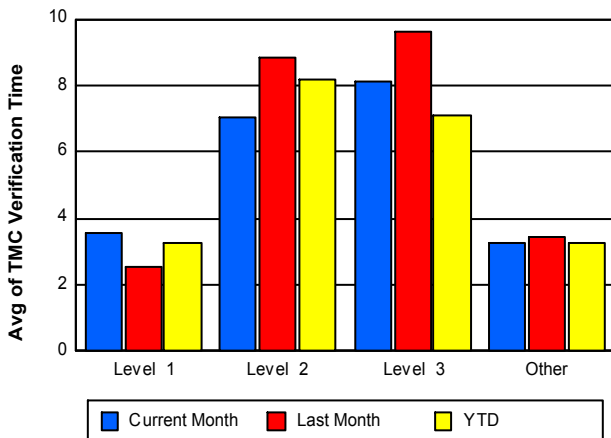
Number of Events / Severity



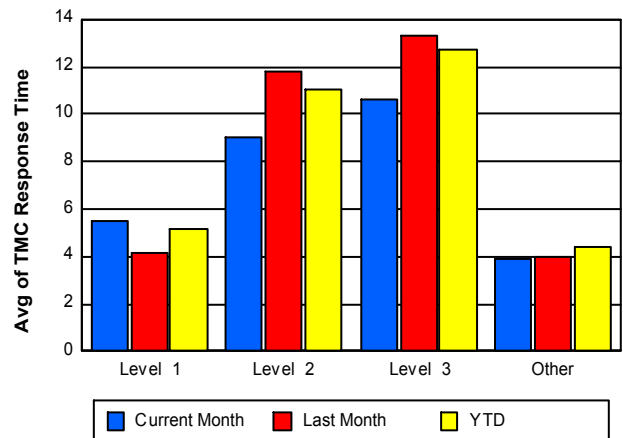
TMC Detection Time



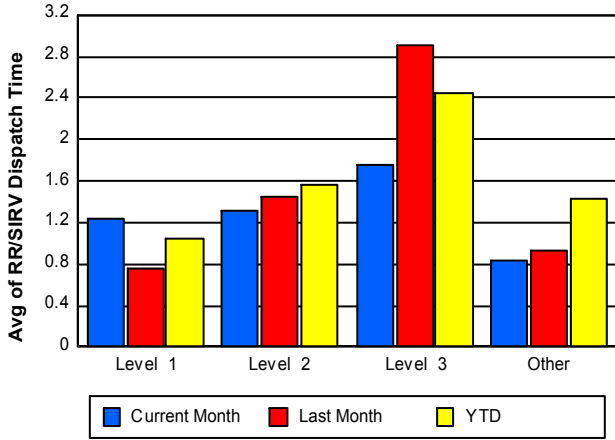
TMC Verification Time



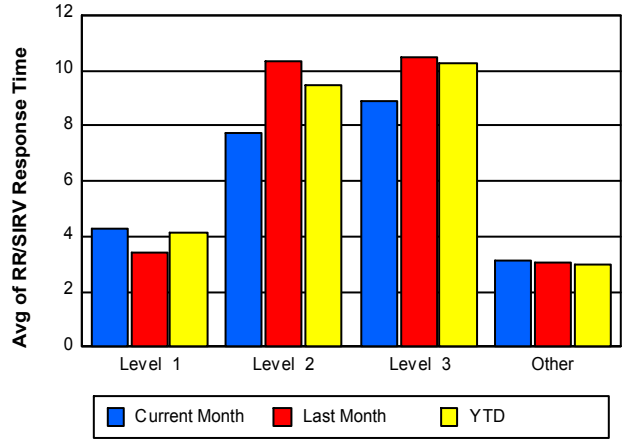
TMC Response Time



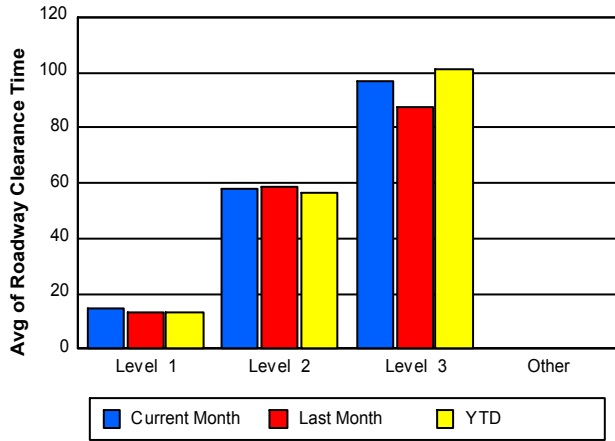
Road Ranger / SIRV Dispatch Time



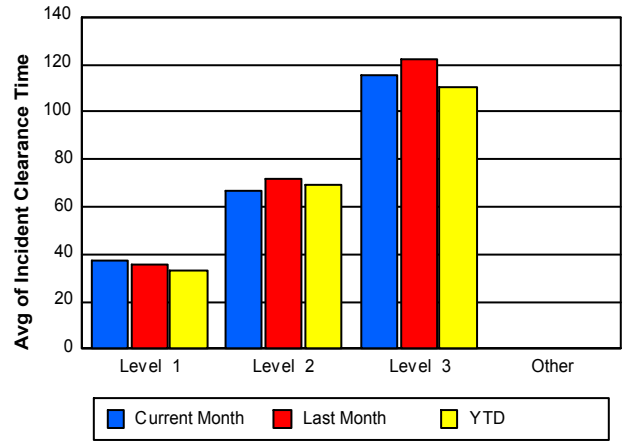
Road Ranger / SIRV Response Time



Roadway Clearance Time (2A)



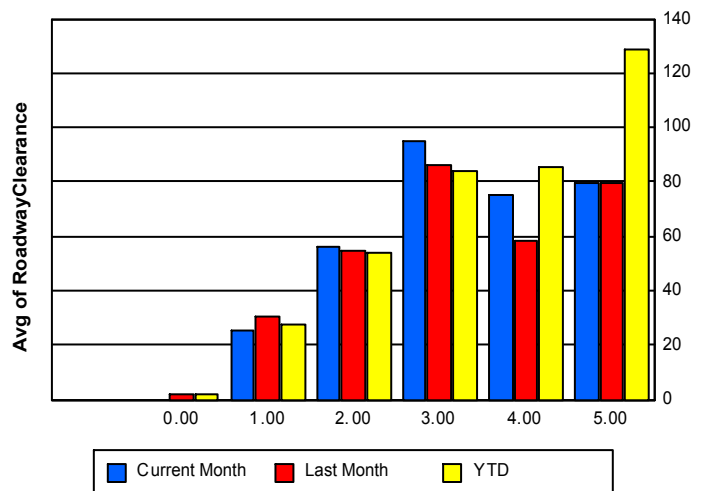
Incident Clearance Time (3B)



Roadway Clearance by Maximum Number of Lanes Blocked

	Current Month	Last Month	YTD
0		1.70	1.70
1	25.73	30.71	27.49
2	55.98	54.99	54.02
3	94.87	86.05	84.32
4	75.23	58.48	85.57
5	79.30	79.77	128.80

Roadway Clearance Time(2A)

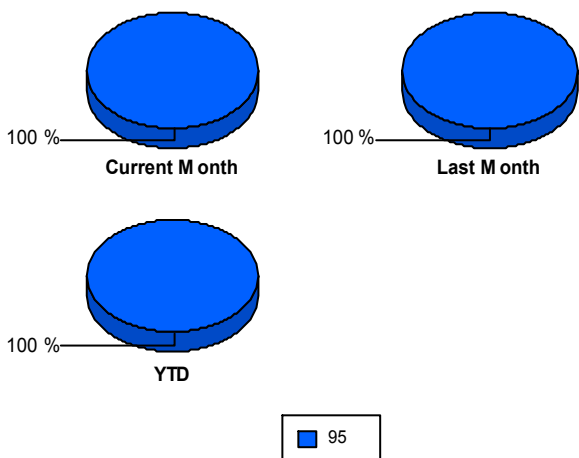


Performance Measures by Roadway

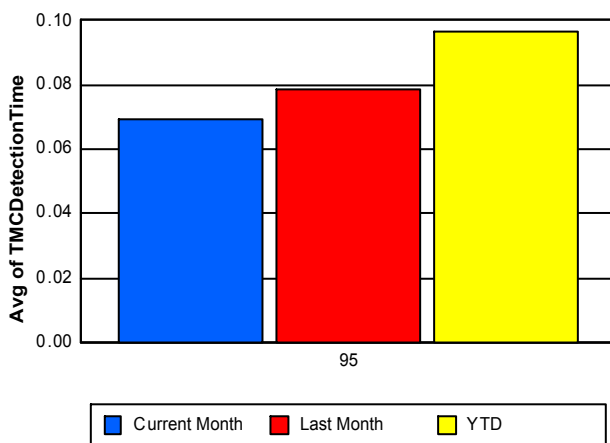
95

	<u>Current Month</u>	<u>Last Month</u>	<u>YTD</u>
Number of Events	2,911	2,877	28,568
Number of Incidents	212	211	1,895
TMC Detection (min.)	0.07	0.08	0.10
TMC Verification (min.)	3.42	3.60	3.39
TMC Response (min.)	4.16	4.27	4.67
RR Dispatch Time (min.)	0.87	0.96	1.42
RR Resp. Time (min.)	3.30	3.31	3.25
Event Clearance (min.)	46.25	50.55	53.48
Roadway Clear. (min.)	38.90	39.50	37.53
Incident Clearance (min.)	56.82	59.59	53.94
# of Events w/ RR/SIRV	2,790	2,764	27,292
RR/SIRV Responses	2,933	2,905	28,641
RR/SIRV Activities	3,115	3,092	30,615

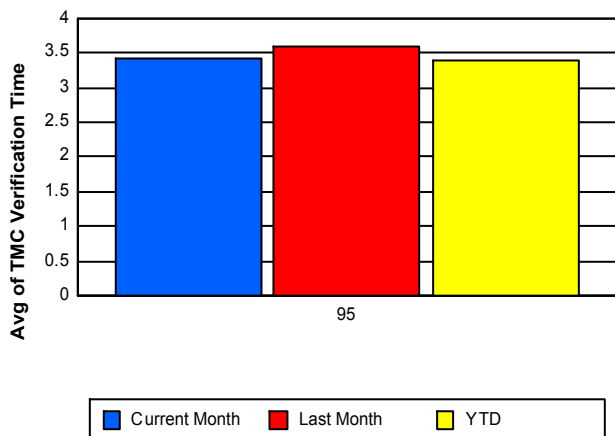
Number of Events / Roadway



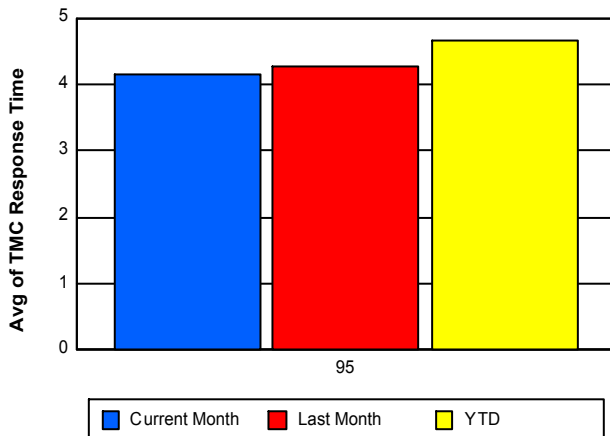
TMC Detection Time



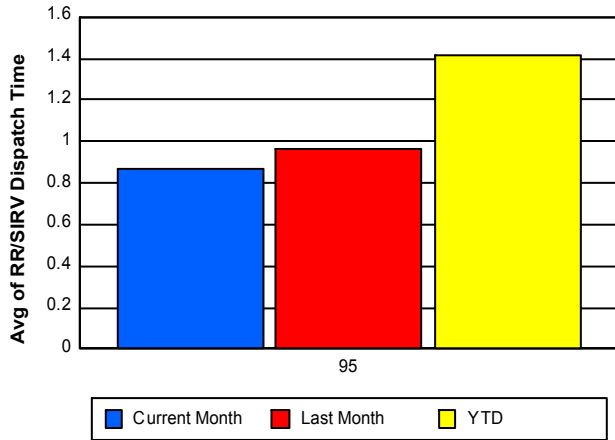
TMC Verification Time



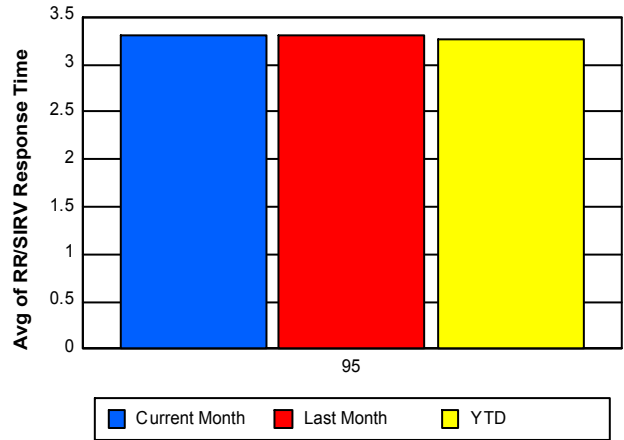
TMC Response Time



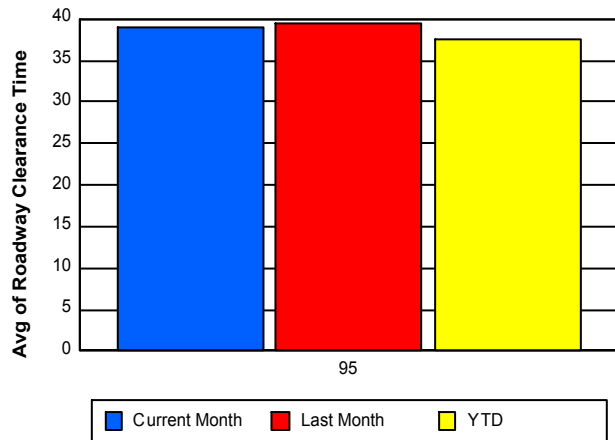
Road Ranger / SIRV Dispatch Time



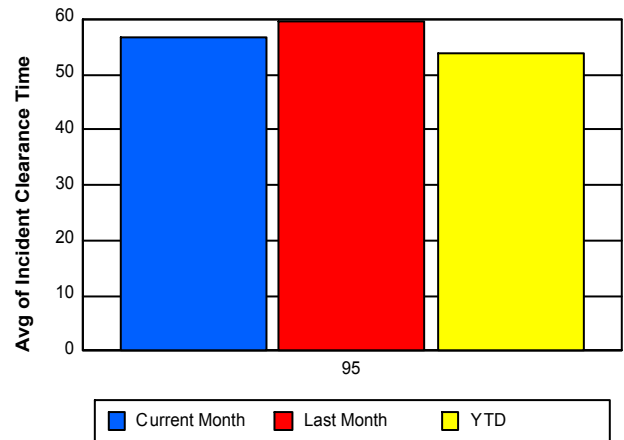
Road Ranger / SIRV Response Time



Roadway Clearance Time (2A)



Incident Clearance Time (3B)



Performance Measures by Event Type

Abandoned Vehicle

	<u>Current Month</u>	<u>Last Month</u>	<u>YTD</u>
Number of Events	515	497	5,346
Number of Incidents	2	1	21
TMC Detection (min.)	0.01	0.02	0.01
TMC Verification (min.)	0.79	1.04	0.76
TMC Response (min.)	1.35	1.45	5.45
RR Dispatch Time (min.)	0.24	0.54	4.51
RR Response Time (min.)	1.11	0.91	0.94
Event Clearance (min.)	162.51	182.53	196.99
Roadway Clearance (min.)	68.50	6.62	22.68
Incident Clearance (min.)	70.29	7.87	115.33
# of Events w/ RR/SIRV	446	435	4,417
RR/SIRV Assists	465	442	4,592
RR/SIRV Activities	473	450	4,736

Accident

	<u>Current Month</u>	<u>Last Month</u>	<u>YTD</u>
Number of Events	295	305	2,504
Number of Incidents	137	141	1,074
TMC Detection (min.)	0.22	0.23	0.32
TMC Verification (min.)	5.40	6.27	5.97
TMC Response (min.)	6.75	7.90	7.80
RR Dispatch Time (min.)	1.38	1.64	1.28
RR Response Time (min.)	5.37	6.25	6.53
Event Clearance (min.)	58.93	57.46	53.07
Roadway Clearance (min.)	47.76	43.84	46.59
Incident Clearance (min.)	72.17	69.37	69.26
# of Events w/ RR/SIRV	285	300	2,451
RR/SIRV Assists	355	348	2,938
RR/SIRV Activities	389	371	3,262

Congestion

	<u>Current Month</u>	<u>Last Month</u>	<u>YTD</u>
Number of Events	4	11	64
Number of Incidents	0	0	3
TMC Detection (min.)	0.00	0.01	0.03
TMC Verification (min.)	0.00	5.09	3.03
TMC Response (min.)	8.97	28.93	15.96
RR Dispatch Time (min.)	0.30	7.87	5.95
RR Response Time (min.)	8.67	21.06	13.06
Event Clearance (min.)	10.98	34.05	37.38
Roadway Clearance (min.)			52.32
Incident Clearance (min.)			79.64
# of Events w/ RR/SIRV	3	6	31
RR/SIRV Assists	3	6	35
RR/SIRV Activities	3	6	36

Debris on Roadway

	<u>Current Month</u>	<u>Last Month</u>	<u>YTD</u>
Number of Events	131	165	1,875
Number of Incidents	17	17	234
TMC Detection (min.)	0.20	0.20	0.20
TMC Verification (min.)	7.18	7.81	7.18
TMC Response (min.)	8.38	7.93	7.41
RR Dispatch Time (min.)	1.28	1.85	1.25
RR Response Time (min.)	7.09	6.06	6.16
Event Clearance (min.)	12.69	15.46	11.75
Roadway Clearance (min.)	15.17	25.10	12.77
Incident Clearance (min.)	17.68	34.12	14.88
# of Events w/ RR/SIRV	129	164	1,866
RR/SIRV Assists	137	173	1,939
RR/SIRV Activities	139	175	1,976

Disabled Vehicle

	<u>Current Month</u>	<u>Last Month</u>	<u>YTD</u>
Number of Events	1,909	1,837	18,235
Number of Incidents	50	44	486
TMC Detection (min.)	0.05	0.06	0.08
TMC Verification (min.)	3.50	3.41	3.38
TMC Response (min.)	4.04	3.87	3.67
RR Dispatch Time (min.)	0.89	0.85	0.70
RR Response Time (min.)	3.16	3.02	2.98
Event Clearance (min.)	16.02	17.85	16.69
Roadway Clearance (min.)	19.64	26.78	23.92
Incident Clearance (min.)	27.80	34.48	33.94
# of Events w/ RR/SIRV	1,880	1,805	18,049
RR/SIRV Assists	1,923	1,878	18,612
RR/SIRV Activities	2,059	2,032	20,062

Emergency Vehicles

	<u>Last Month</u>	<u>YTD</u>
Number of Events	2	10
Number of Incidents	2	6
TMC Detection (min.)	0.18	0.22
TMC Verification (min.)	2.07	3.15
TMC Response (min.)	4.05	3.90
RR Dispatch Time (min.)	2.26	0.99
RR Response Time (min.)	3.88	3.34
Event Clearance (min.)	48.33	24.29
Roadway Clearance (min.)	19.67	15.56
Incident Clearance (min.)	48.33	26.48
# of Events w/ RR/SIRV	1	8
RR/SIRV Assists	1	8
RR/SIRV Activities	1	9

Off Ramp Backup

	<u>YTD</u>
Number of Events	2
Number of Incidents	0
TMC Detection (min.)	0.00
TMC Verification (min.)	0.00
TMC Response (min.)	5.67
RR Dispatch Time (min.)	0.40
RR Response Time (min.)	5.27
Event Clearance (min.)	19.78
Roadway Clearance (min.)	
Incident Clearance (min.)	
# of Events w/ RR/SIRV	1
RR/SIRV Assists	2
RR/SIRV Activities	2

Other

	<u>Current Month</u>	<u>Last Month</u>	<u>YTD</u>
Number of Events	35	32	300
Number of Incidents	0	0	7
TMC Detection (min.)	0.01	0.16	0.13
TMC Verification (min.)	8.02	5.63	5.63
TMC Response (min.)	10.88	7.06	8.58
RR Dispatch Time (min.)	2.10	0.59	1.09
RR Response Time (min.)	8.67	6.46	7.56
Event Clearance (min.)	17.70	15.24	17.38
Roadway Clearance (min.)			57.86
Incident Clearance (min.)			63.85
# of Events w/ RR/SIRV	27	27	253
RR/SIRV Assists	28	28	263
RR/SIRV Activities	29	28	274

Pedestrian

	<u>Current Month</u>	<u>Last Month</u>	<u>YTD</u>
Number of Events	13	19	145
Number of Incidents	0	0	1
TMC Detection (min.)	0.22	0.10	0.12
TMC Verification (min.)	0.56	4.30	2.47
TMC Response (min.)	2.42	4.83	3.26
RR Dispatch Time (min.)	0.27	1.13	0.50
RR Response Time (min.)	2.15	3.70	2.75
Event Clearance (min.)	13.18	12.58	14.19
Roadway Clearance (min.)			18.32
Incident Clearance (min.)			19.55
# of Events w/ RR/SIRV	13	19	141
RR/SIRV Assists	13	20	144
RR/SIRV Activities	14	20	147

Police Activity

	<u>Current Month</u>	<u>Last Month</u>	<u>YTD</u>
Number of Events	1	6	45
Number of Incidents	1	5	32
TMC Detection (min.)	0.00	0.15	0.18
TMC Verification (min.)	0.00	3.61	3.11
TMC Response (min.)	6.25	10.57	9.56
RR Dispatch Time (min.)	5.98	0.97	2.69
RR Response Time (min.)	0.27	9.59	6.93
Event Clearance (min.)	30.52	89.77	62.26
Roadway Clearance (min.)	28.78	79.70	67.63
Incident Clearance (min.)	30.52	105.11	79.68
# of Events w/ RR/SIRV	1	4	39
RR/SIRV Assists	1	6	54
RR/SIRV Activities	1	6	57

Road Work - Emergency

	<u>Current Month</u>	<u>YTD</u>
Number of Events	6	28
Number of Incidents	5	25
TMC Detection (min.)	0.00	0.11
TMC Verification (min.)	1.84	3.59
TMC Response (min.)	8.00	9.19
RR Dispatch Time (min.)	2.40	2.46
RR Response Time (min.)	5.61	6.73
Event Clearance (min.)	50.28	58.28
Roadway Clearance (min.)	59.67	96.91
Incident Clearance (min.)	59.50	58.26
# of Events w/ RR/SIRV	4	24
RR/SIRV Assists	6	42
RR/SIRV Activities	6	42

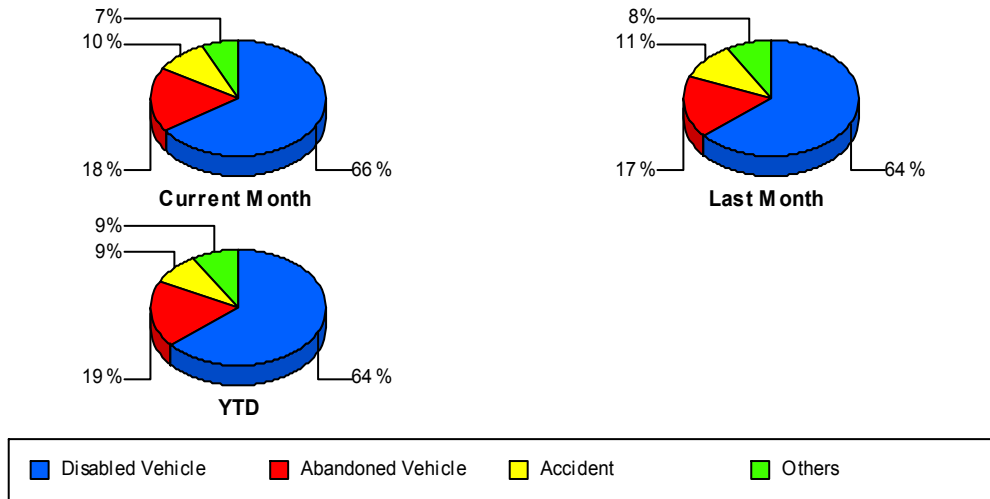
Visibility

	<u>YTD</u>
Number of Events	2
Number of Incidents	0
TMC Detection (min.)	0.00
TMC Verification (min.)	0.00
TMC Response (min.)	0.00
RR Dispatch Time (min.)	0.00
RR Response Time (min.)	0.00
Event Clearance (min.)	22.63
Roadway Clearance (min.)	
Incident Clearance (min.)	
# of Events w/ RR/SIRV	1
RR/SIRV Assists	1
RR/SIRV Activities	1

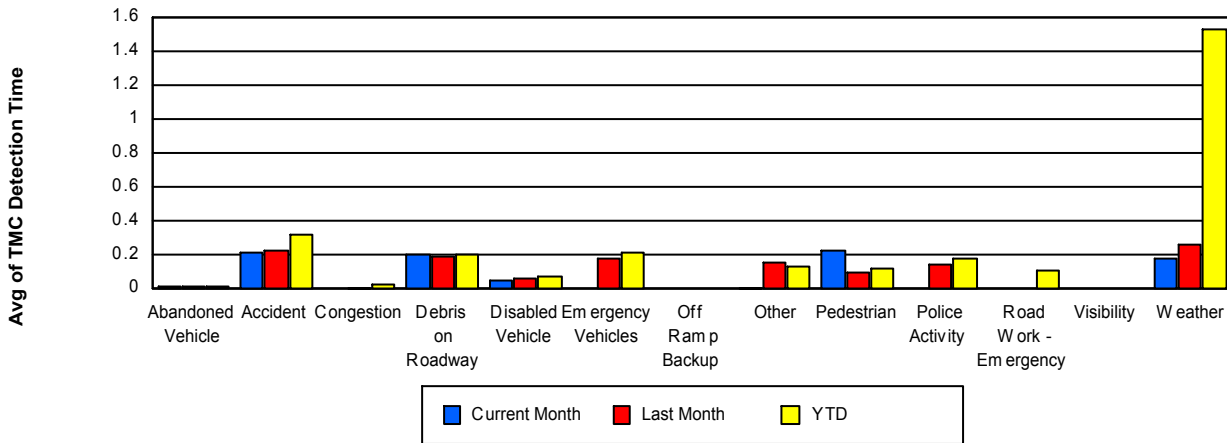
Weather

	<u>Current Month</u>	<u>Last Month</u>	<u>YTD</u>
Number of Events	2	3	12
Number of Incidents	0	1	6
TMC Detection (min.)	0.18	0.27	1.53
TMC Verification (min.)	9.86	8.49	14.41
TMC Response (min.)	9.82	8.46	20.54
RR Dispatch Time (min.)	0.10	0.15	2.09
RR Response Time (min.)	9.72	8.31	18.45
Event Clearance (min.)	72.18	29.93	77.31
Roadway Clearance (min.)		104.23	120.43
Incident Clearance (min.)		65.73	95.04
# of Events w/ RR/SIRV	2	3	11
RR/SIRV Assists	2	3	11
RR/SIRV Activities	2	3	11

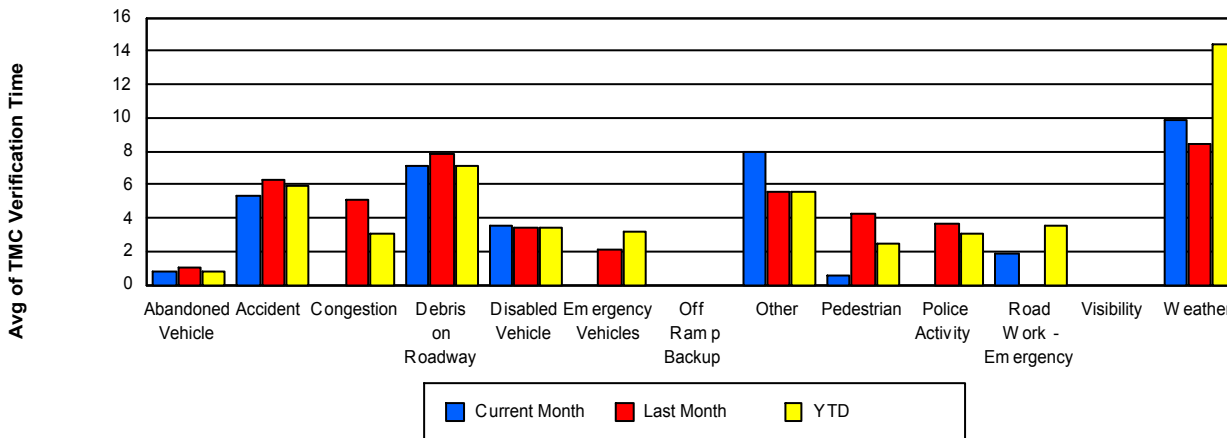
Number of Events / Event Type



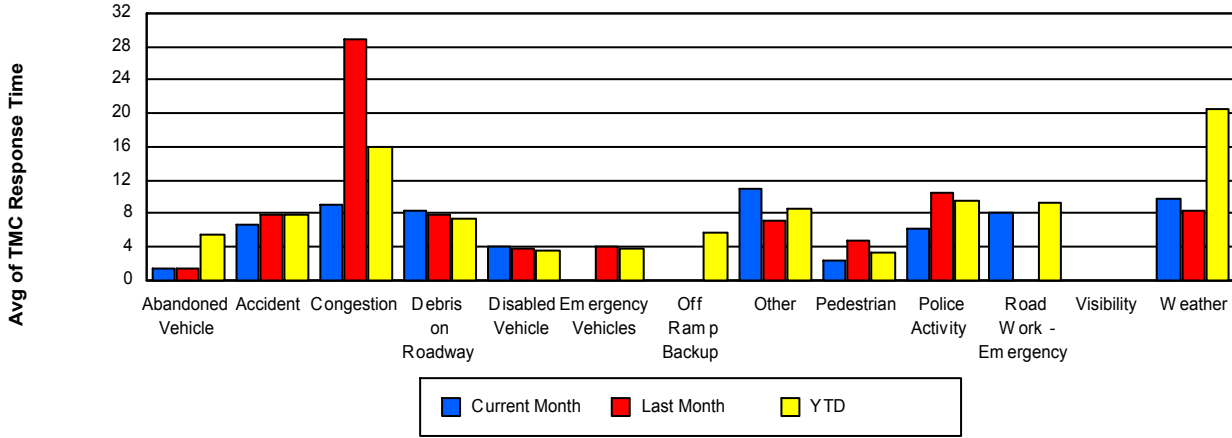
TMC Detection Time



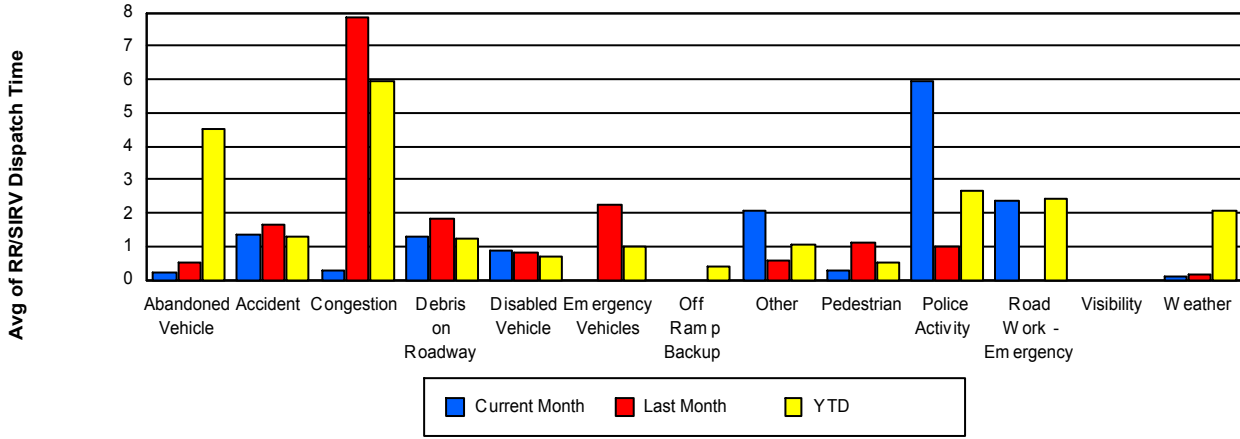
TMC Verification Time



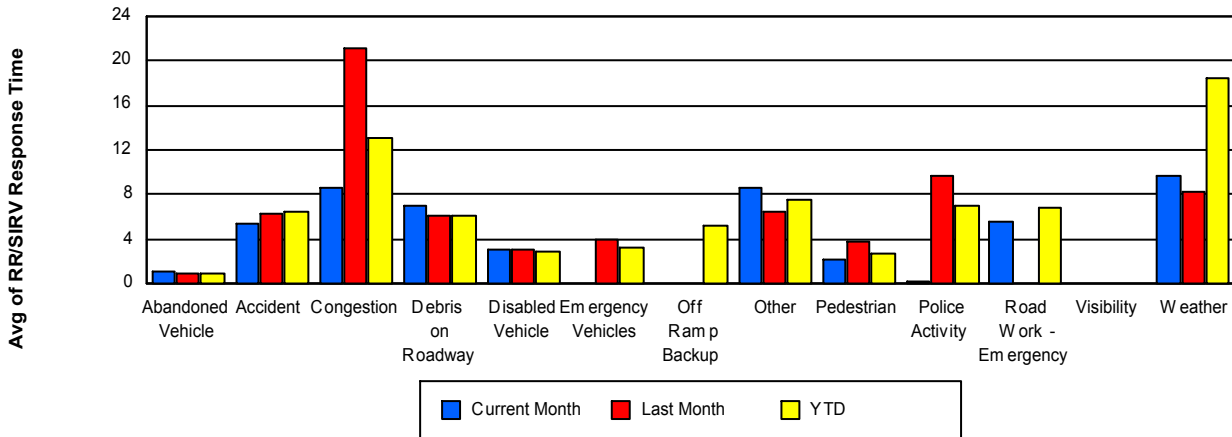
TMC Response Time



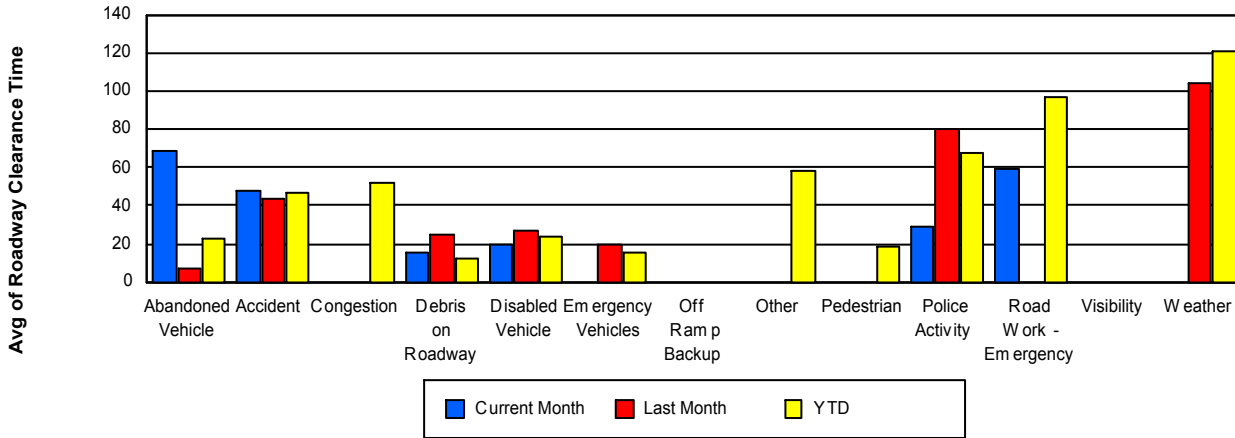
Road Ranger / SIRV Dispatch Time



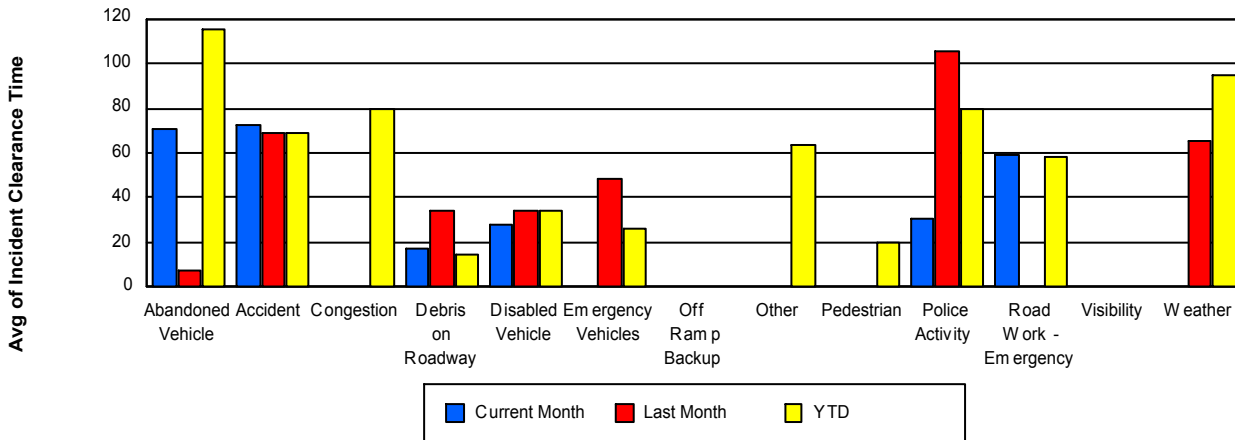
Road Ranger / SIRV Response Time



Roadway Clearance Time (2A)



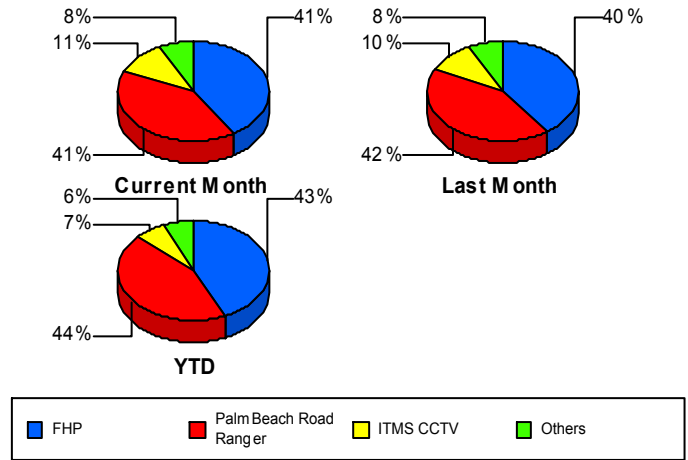
Incident Clearance Time (3B)



Incident Detection Methods

	Current Month	Last Month	YTD
Broward CCTV	0	0	1
Broward Road Ranger	0	0	7
Broward TMC	0	0	3
Construction CEI	1	2	6
District 4	3	9	13
FDOT Maintenance	1	1	2
FHP	87	85	815
I-95 Construction PIO	1	0	6
ITMS	3	0	18
ITMS CCTV	23	22	127
Media	0	0	15
MIST Map RTMS Alert	0	0	1
Motorist	6	4	26
Other	0	0	8
Palm Beach County Sc	0	0	1
Palm Beach Road Rang	86	88	830
Road Watcher	0	0	1
SIRV	0	0	1
SmarTraveler (511)	1	0	14
Total	212	211	1,895

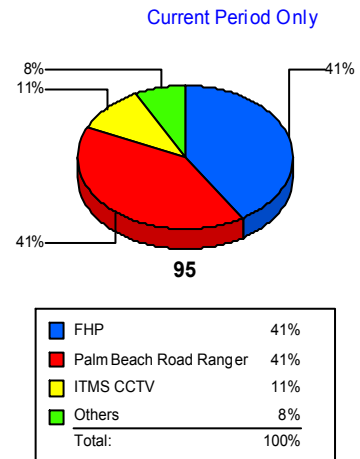
Total Incidents by Detection Method



Incident Detection Methods by Roadway

		Current Month	Last Month	YTD
95	Broward CCTV	0	0	1
	Broward Road Ranger	0	0	7
	Broward TMC	0	0	3
	Construction CEI	1	2	6
	District 4	3	9	13
	FDOT Maintenance	1	1	2
	FHP	87	85	815
	I-95 Construction PIO	1	0	6
	ITMS	3	0	18
	ITMS CCTV	23	22	127
	Media	0	0	15
	MIST Map RTMS Alert	0	0	1
	Motorist	6	4	26
	Other	0	0	8
	Palm Beach County Sc	0	0	1
	Palm Beach Road Rang	86	88	830
	Road Watcher	0	0	1
	SIRV	0	0	1
	SmarTraveler (511)	1	0	14
Total	212	211	1,895	
Total	212	211	1,895	

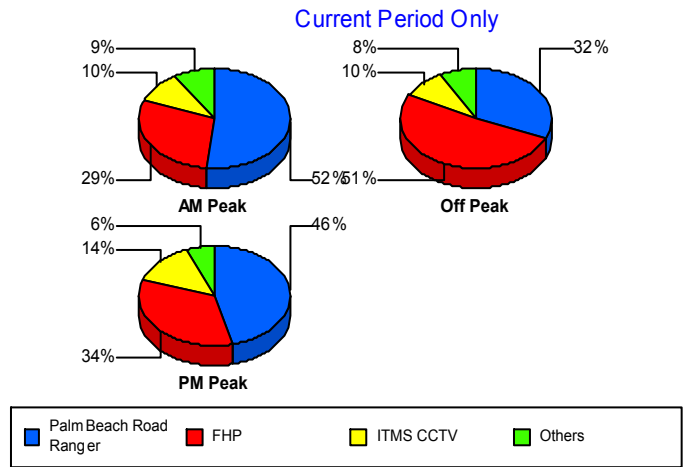
Total Events by Roadway and Detection Method



Incident Detection Methods by Peak Period

		Current Month	Last Month	YTD
AM Peak	Broward Road Ranger	0	0	1
	Construction CEI	1	1	3
	District 4	1	1	3
	FHP	17	17	170
	I-95 Construction PIO	0	0	2
	ITMS	3	0	6
	ITMS CCTV	6	4	33
	Media	0	0	2
	Motorist	0	2	4
	Palm Beach Road Rang	30	29	256
	SmarTraveler (511)	0	0	4
	Total	58	54	484
Off Peak	Broward Road Ranger	0	0	4
	Broward TMC	0	0	1
	Construction CEI	0	1	2
	District 4	2	3	5
	FDOT Maintenance	0	1	1
	FHP	53	53	478
	I-95 Construction PIO	1	0	4
	ITMS	0	0	8
	ITMS CCTV	10	12	55
	Media	0	0	3
	MIST Map RTMS Alert	0	0	1
	Motorist	5	1	15
	Other	0	0	5
	Palm Beach County Sc	0	0	1
	Palm Beach Road Rang	33	50	370
	SIRV	0	0	1
	SmarTraveler (511)	0	0	4
Total	104	121	958	
PM Peak	Broward CCTV	0	0	1

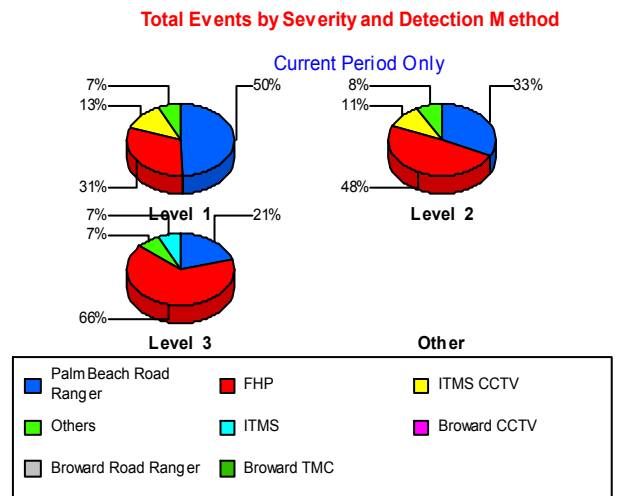
Total Events by Peak Period and Detection Method



		Current Month	Last Month	YTD
PM Peak	Broward Road Ranger	0	0	2
	Broward TMC	0	0	2
	Construction CEI	0	0	1
	District 4	0	5	5
	FDOT Maintenance	1	0	1
	FHP	17	15	167
	ITMS	0	0	4
	ITMS CCTV	7	6	39
	Media	0	0	10
	Motorist	1	1	7
	Other	0	0	3
	Palm Beach Road Rang	23	9	204
	Road Watcher	0	0	1
	SmarTraveler (511)	1	0	6
Total	50	36	453	
Total	212	211	1,895	

Incident Detection Methods by Severity

		Current Month	Last Month	YTD
Level 1	Broward CCTV	0	0	1
	Broward Road Ranger	0	0	4
	Broward TMC	0	0	2
	District 4	1	2	4
	FDOT Maintenance	1	1	2
	FHP	37	30	348
	I-95 Construction PIO	1	0	2
	ITMS	1	0	9
	ITMS CCTV	15	15	80
	Media	0	0	7
	Motorist	4	2	13
	Other	0	0	6
	Total	59	55	578



		Current Month	Last Month	YTD
Level 1	SmarTraveler (511)	0	0	8
	Total	119	105	1,064
Level 2	Broward Road Ranger	0	0	2
	Construction CEI	1	2	5
	District 4	1	3	4
	FHP	31	47	333
	I-95 Construction PIO	0	0	3
	ITMS	0	0	6
	ITMS CCTV	7	6	33
	Media	0	0	6
	MIST Map RTMS Alert	0	0	1
	Motorist	2	1	12
	Other	0	0	2
	Palm Beach County Sc	0	0	1
	Palm Beach Road Rang	21	22	181
	SIRV	0	0	1
	SmarTraveler (511)	1	0	6
	Total	64	81	596
Level 3	Broward Road Ranger	0	0	1
	Broward TMC	0	0	1
	Construction CEI	0	0	1
	District 4	1	4	5
	FHP	19	8	134
	I-95 Construction PIO	0	0	1
	ITMS	2	0	3
	ITMS CCTV	1	1	14
	Media	0	0	2
	Motorist	0	1	1
	Palm Beach Road Rang	6	11	71
	Road Watcher	0	0	1
	Total	29	25	235
Total		212	211	1,895

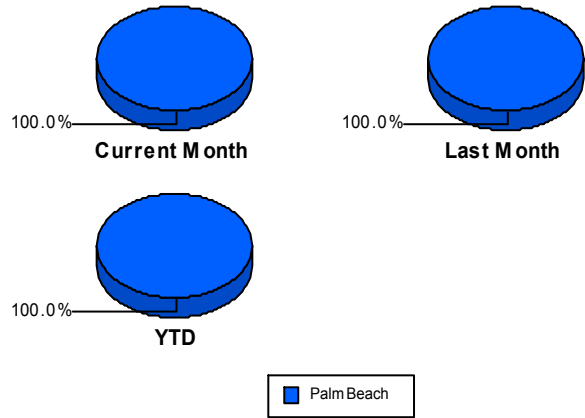
Road Ranger / SIRV Performance Measures

Road Ranger / SIRV Performance By County

RR/SIRV Responses per County

Values presented are:
 - Total Events with a RR/SIRV Response
 - Total RR/SIRV Responses,
 - Total Activities Performed

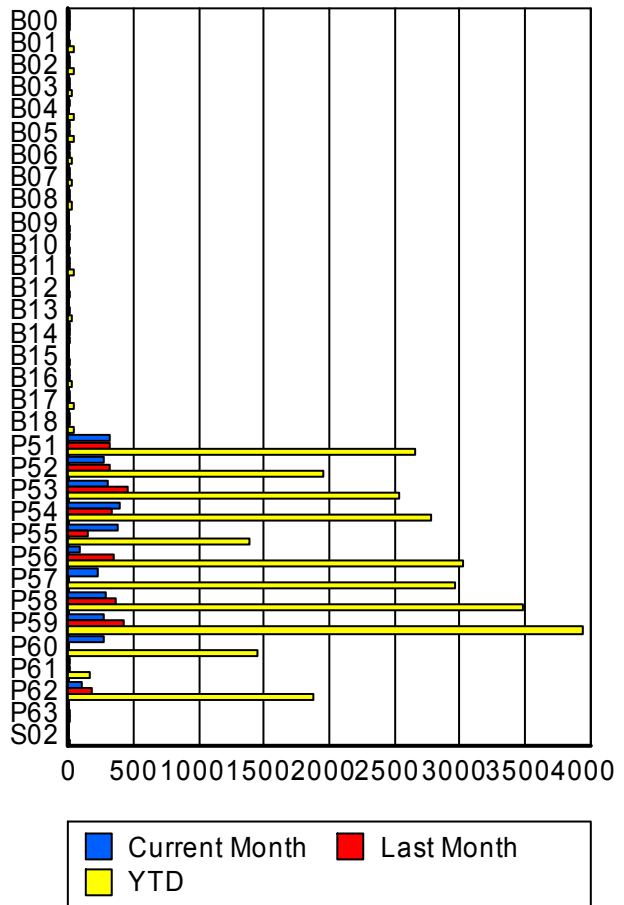
	Current Mo	Last Month	YTD
Palm Beach	2,790	2,764	27,292
	2,933	2,905	28,641
	3,115	3,092	30,615



Road Ranger / SIRV Performance By Truck

	Current Mo	Last Month	YTD
B00	1	3	8
	1	3	8
	1	3	9
B01	0	13	38
	0	13	38
	0	13	40
B02	7	4	46
	7	4	46
	8	4	48
B03	3	1	21
	3	1	21
	3	1	21
B04	1	0	35
	1	0	35
	1	0	35
B05	5	1	33
	5	1	33
	5	1	33
B06	3	2	23
	3	2	23
	3	2	23
B07	6	1	18
	6	1	18
	6	1	19
B08	4	3	19
	4	3	20
	4	3	21

RR/SIRV Responses per Truck



	Current Mo	Last Month	YTD
B09	0 0 0	0 0 0	1 1 1
B10	2 2 2	0 0 0	9 9 9
B11	7 7 7	1 1 1	40 40 43
B12	0 0 0	0 0 0	11 12 12
B13	0 0 0	4 4 4	22 22 23
B14	2 2 2	1 1 1	15 15 16
B15	0 0 0	0 0 0	10 10 10
B16	3 3 4	2 2 2	17 17 19
B17	3 3 3	4 4 4	42 42 44
B18	5 5 6	3 3 3	32 32 33
P51	314 317 338	321 321 342	2,630 2,656 2,836
P52	262 269 279	308 311 332	1,930 1,956 2,089
P53	295 296 312	443 449 484	2,505 2,532 2,707
P54	382 388 415	329 335 360	2,740 2,775 2,961
P55	366 368 389	147 148 156	1,367 1,386 1,495

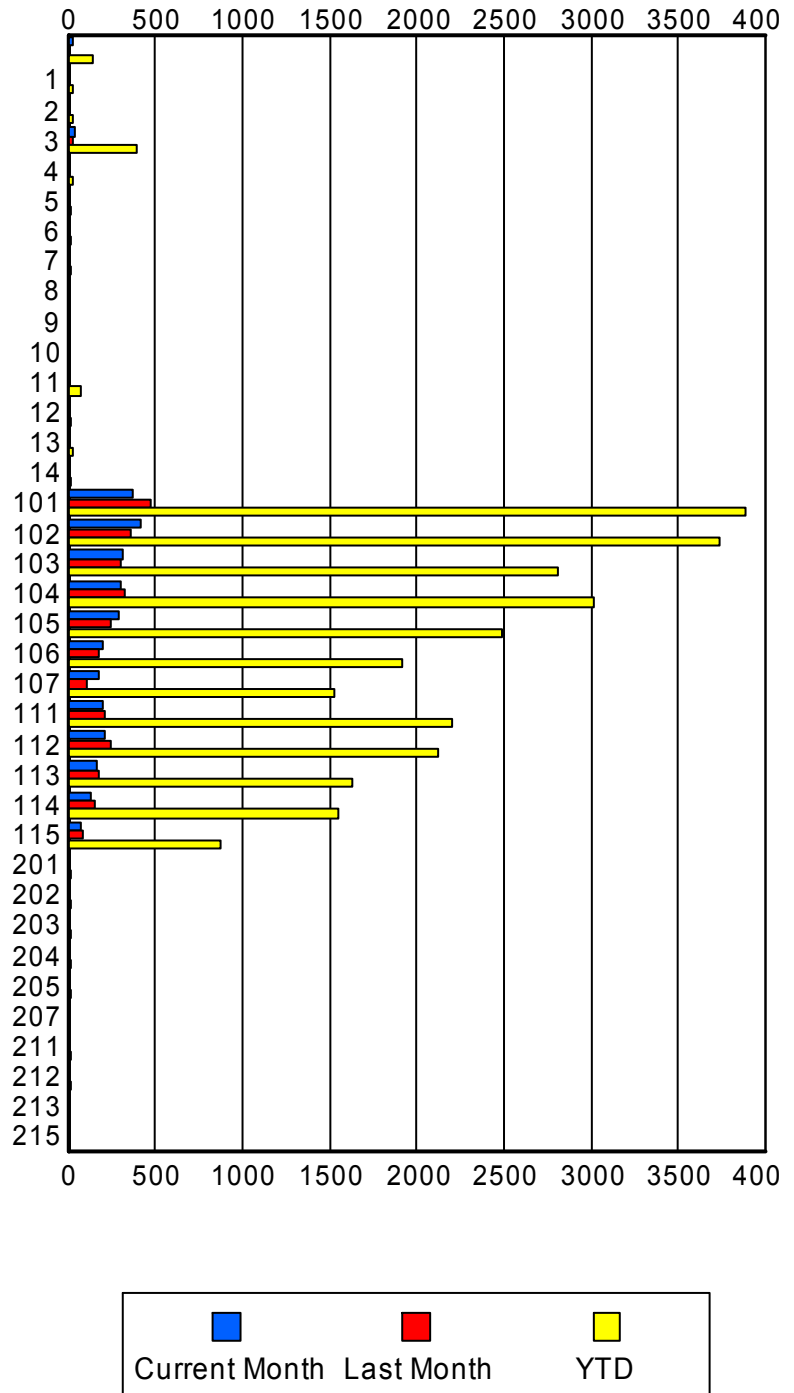
	Current Mo	Last Month	YTD
P56	87	344	2,994
	88	346	3,021
	93	365	3,216
P57	222	0	2,933
	223	0	2,961
	248	0	3,188
P58	280	353	3,444
	282	358	3,489
	295	382	3,724
P59	271	409	3,893
	274	414	3,937
	282	436	4,200
P60	273	0	1,435
	275	0	1,455
	301	0	1,571
P61	2	2	155
	2	2	156
	2	2	168
P62	98	176	1,854
	99	177	1,872
	106	189	1,998
P63	0	1	2
	0	1	2
	0	1	2
S02	0	0	1
	0	0	1
	0	0	1

Road Ranger / SIRV Performance By Beat

	Current Mo	Last Month	YTD
	23	8	137
	23	8	140
	23	8	149
1	0	0	25
	0	0	26
	0	0	26
2	0	0	24
	0	0	24
	0	0	26
3	39	31	386
	39	32	390
	42	32	406
4	1	0	23
	1	0	24
	1	0	24
5	0	0	15
	0	0	15
	0	0	19
6	0	0	13
	0	0	13
	0	0	15
7	0	0	12
	0	0	12
	0	0	12
8	1	0	3
	1	0	3
	1	0	3
9	1	0	1
	1	0	1
	1	0	1
10	0	1	3
	0	1	3
	0	1	3
11	8	7	74
	8	7	74
	8	7	75
12	0	0	12
	0	0	12
	0	0	15
13	0	0	24
	0	0	27
	0	0	28
14	0	0	16
	0	0	16
	0	0	18

Values presented are:
 - Total Events with a RR/SIRV Response
 - Total RR/SIRV Responses,
 - Total Activities Performed

RR/SIRV Responses per Beat



	Current Mo	Last Month	YTD
101	367 370 393	472 474 494	3,845 3,881 4,100
102	405 412 429	355 358 369	3,688 3,735 3,921
103	311 313 322	298 299 320	2,762 2,806 3,018
104	302 306 325	325 330 354	2,966 3,013 3,222
105	292 294 312	236 241 255	2,455 2,484 2,623
106	196 200 211	178 181 198	1,888 1,912 2,030
107	175 178 192	106 107 113	1,513 1,526 1,599
111	201 203 224	211 215 231	2,179 2,201 2,383
112	212 215 231	240 242 258	2,093 2,119 2,293
113	162 163 174	167 170 192	1,614 1,635 1,811
114	128 129 140	148 151 164	1,527 1,550 1,699
115	77 77 86	83 84 91	872 880 969
201	0 0 0	0 0 0	18 18 18
202	0 0 0	0 0 0	20 20 20
203	0 0 0	0 0 0	15 15 17

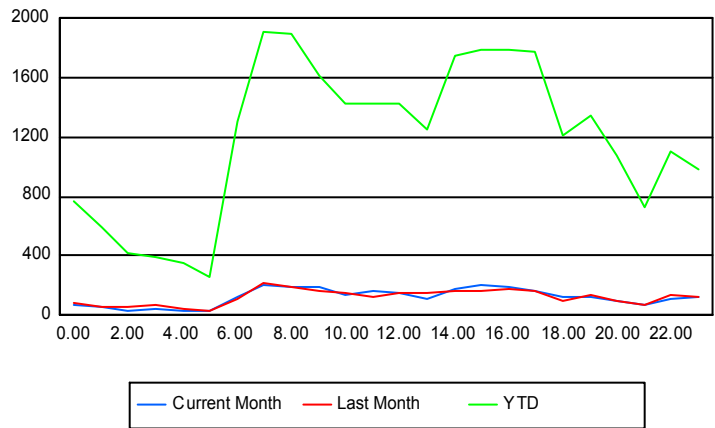
	Current Mo	Last Month	YTD
204	0	0	10
	0	0	10
	0	0	13
205	0	0	16
	0	0	16
	0	0	18
207	0	5	5
	0	5	5
	0	5	5
211	0	0	10
	0	0	10
	0	0	10
212	0	0	17
	0	0	17
	0	0	17
213	0	0	7
	0	0	7
	0	0	8
215	0	0	1
	0	0	1
	0	0	1

Road Ranger / SIRV Performance By Time of Day

Values presented are:
 - Total Events with a RR/SIRV Response
 - Total RR/SIRV Responses,
 - Total Activities Performed

	Current Mo	Last Month	YTD
12AM-1AM	75	81	732
	75	88	775
	88	98	855
1AM-2AM	53	46	548
	59	52	592
	63	59	653
2AM-3AM	30	49	409
	31	52	425
	34	55	458
3AM-4AM	34	57	364
	41	65	396
	46	66	436
4AM-5AM	34	35	325
	35	40	359
	36	42	398
5AM-6AM	25	23	216
	33	29	260
	38	31	293

Number of Responses / Hour of the Day



	Current Mo	Last Month	YTD
6AM-7AM	114	105	1,229
	122	112	1,307
	129	121	1,390
7AM-8AM	196	211	1,841
	208	216	1,915
	222	235	2,039
8AM-9AM	190	183	1,809
	198	190	1,898
	215	199	2,018
9AM-10AM	183	158	1,547
	192	169	1,616
	204	185	1,722
10AM-11AM	138	143	1,369
	142	147	1,430
	151	158	1,538
11AM-12PM	154	125	1,369
	163	131	1,432
	170	142	1,509
12PM-1PM	135	138	1,359
	149	147	1,429
	161	155	1,525
1PM-2PM	108	131	1,193
	111	145	1,254
	118	150	1,331
2PM-3PM	169	157	1,661
	176	160	1,743
	188	167	1,852
3PM-4PM	192	159	1,721
	199	167	1,790
	202	169	1,874
4PM-5PM	179	175	1,727
	186	176	1,792
	192	186	1,899
5PM-6PM	163	159	1,721
	168	163	1,781
	172	168	1,866
6PM-7PM	120	91	1,154
	123	92	1,208
	127	93	1,286
7PM-8PM	115	139	1,298
	119	142	1,346
	120	148	1,437
8PM-9PM	101	94	1,035
	103	96	1,074
	110	99	1,147

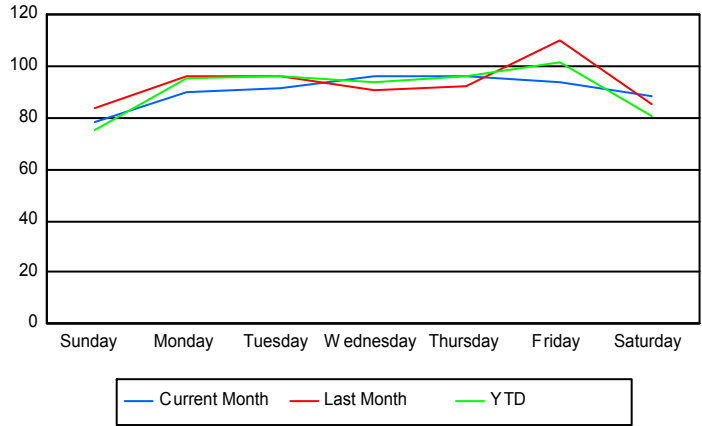
	Current Mo	Last Month	YTD
9PM-10PM	65	65	689
	70	71	733
	74	75	783
10PM-11PM	101	126	1,034
	110	136	1,103
	116	145	1,217
11PM-12AM	116	114	942
	120	119	983
	139	146	1,089

Road Ranger / SIRV Performance By Day of Week

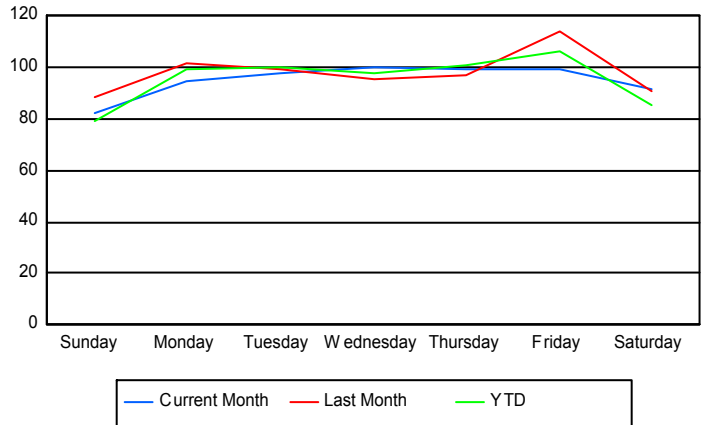
Values presented are: - Total Events with a RR/SIRV Response - Total RR/SIRV Responses, - Total Activities Performed

	Current Mo	Last Month	YTD
Sunday	315 330 344	408 430 464	3,180 3,342 3,592
Monday	449 470 503	384 406 429	4,136 4,318 4,621
Tuesday	457 489 531	382 395 426	4,177 4,357 4,656
Wednesday	473 495 525	361 379 395	4,067 4,240 4,478
Thursday	378 392 416	370 388 416	4,077 4,267 4,556
Friday	373 393 420	439 455 489	4,316 4,519 4,835
Saturday	350 364 376	425 452 473	3,418 3,598 3,877

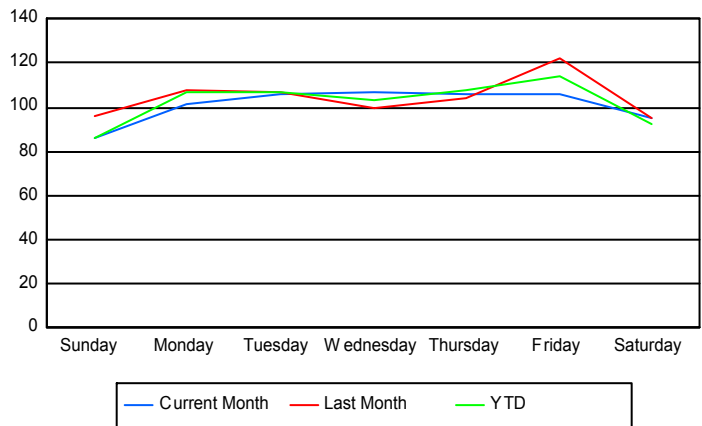
Avg # of events with a RR/SIRV Response per Day of the Week



Avg # of RR/SIRV Responses per Day of the Week



Avg # of RR/SIRV Activities Performed per Day of the Week



Road Ranger/ SIRV Responses per Time of Day and Day of Week

