



Monthly Performance Measures Report

Palm Beach County



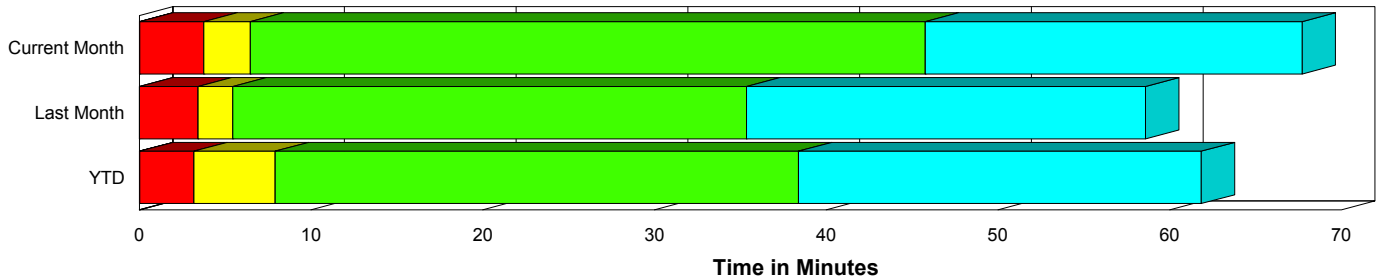
Created on:
September 01, 2009
10:48 pm

Period From Aug 1, 2009 to Aug 31, 2009

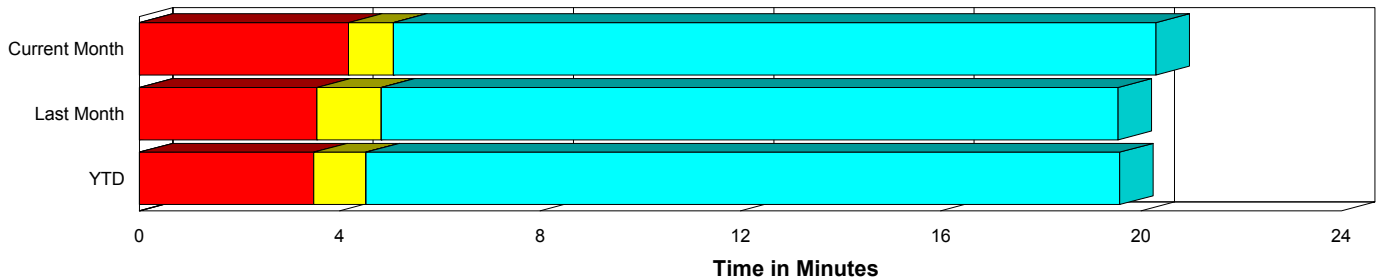
Performance Measures Summary

	Traffic Events (No Lanes Blocked)			Incidents (Lanes Blocked)		
	<u>This Month</u>	<u>Last Month</u>	<u>YTD</u>	<u>This Month</u>	<u>Last Month</u>	<u>YTD</u>
Number of Events	938	1,367	9,668	70	106	690
TMC Detection (min.)	0.00	0.00	0.00	0.03	0.00	0.02
TMC Verification (min.)	4.18	3.55	3.48	3.73	3.43	3.15
TMC Response (min.)	5.60	5.24	5.25	7.73	5.88	8.65
RR Dispatch Time (min.)	2.13	1.85	1.78	3.00	1.66	4.31
RR Response Time (min.)	3.53	3.41	3.56	4.72	4.23	4.33
Roadway Clearance (min.)				41.35	44.00	50.03
Event Clearance (min.)	20.82	19.95	20.29	63.09	67.22	73.11
# of Events w/ RR/SIRV	803	1,207	8,077	50	76	520
RR/SIRV Responses	803	1,207	8,077	50	76	520
RR/SIRV Activities	886	1,342	8,805	70	116	759

Incident Clearance Time-Line



Traffic Event (Non-Lane Blockage) Time-Line



■ Avg. TMC Detection Time	■ Avg. Time from TMC Response to Roadway Clearance*
■ Avg. Time from TMC Detection to TMC Verification	■ Avg. Time from Roadway Clearance to Incident/Event Clearance**
■ Avg. Time from TMC Verification to TMC Response	

* Roadway clearance equals all travel lanes open

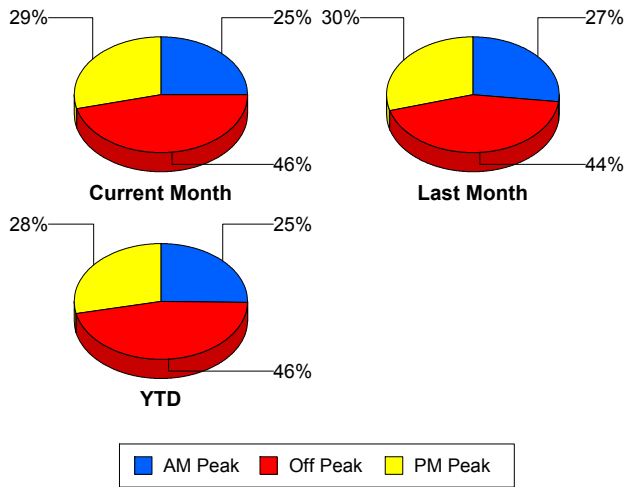
** Incident clearance equals time when last responder has left the scene

Performance Measures by Peak Period

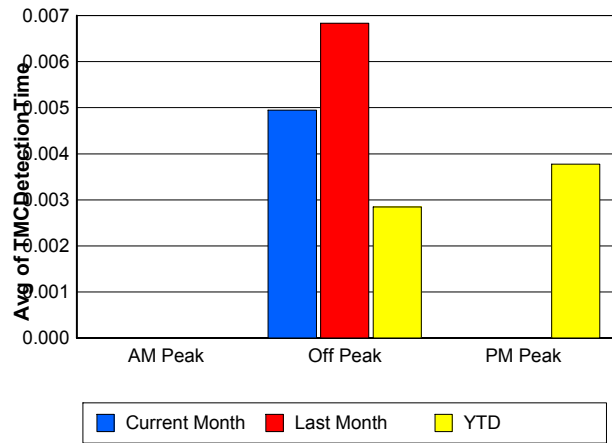
Note: AM peak period is defined as 6am to 10am and PM peak period is defined as 3pm to 7pm.

	AM Peak			Off Peak			PM Peak		
	<u>Current Month</u>	<u>Last Month</u>	<u>YTD</u>	<u>Current Month</u>	<u>Last Month</u>	<u>YTD</u>	<u>Current Month</u>	<u>Last Month</u>	<u>YTD</u>
Number of Events	251	397	2,632	465	641	4,799	292	435	2,927
Number of Incidents	16	37	207	34	44	297	20	25	186
TMC Detection (min.)	0.00	0.00	0.00	0.00	0.01	0.00	0.00	0.00	0.00
TMC Verification (min.)	3.23	2.61	3.06	3.79	3.75	3.07	5.51	4.07	4.46
TMC Response (min.)	4.01	4.27	4.21	6.32	6.29	6.48	6.47	5.01	5.34
RR Dispatch Time (min.)	0.90	1.66	1.12	3.21	2.15	2.98	2.01	1.63	1.39
RR Response Time (min.)	3.12	2.62	3.12	3.16	4.17	3.67	4.55	3.40	3.97
Event Clearance (min.)	23.44	20.95	21.93	24.77	25.11	26.12	22.43	22.97	21.72
Roadway Clearance (min.)	49.22	32.92	39.12	41.74	54.43	51.00	34.41	42.03	60.62
Incident Clearance (min.)	68.70	64.78	64.52	61.64	73.76	74.88	61.07	59.32	79.85
# of Events w/ RR/SIRV	238	385	2,510	341	493	3,357	274	405	2,730
RR/SIRV Responses	238	385	2,510	341	493	3,357	274	405	2,730
RR/SIRV Activities	266	451	2,856	386	554	3,729	304	453	2,979

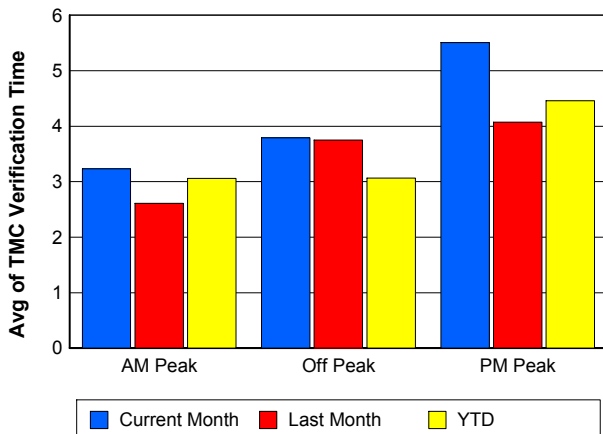
Number of Events / Peak Period



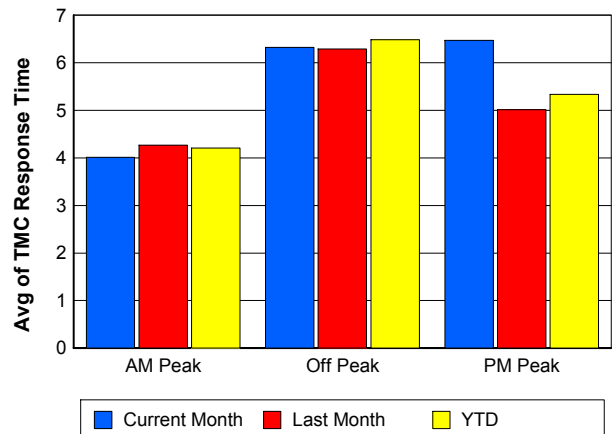
TMC Detection Time



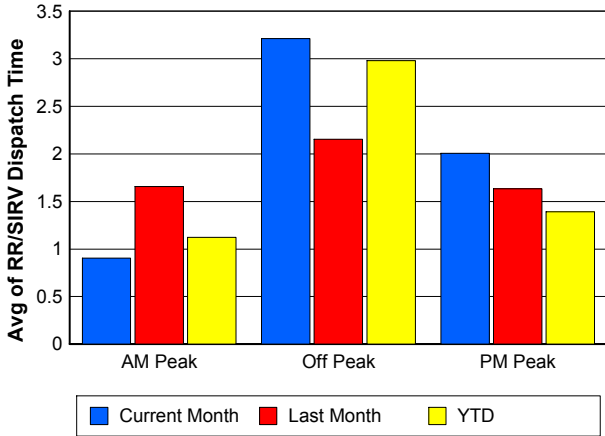
TMC Verification Time



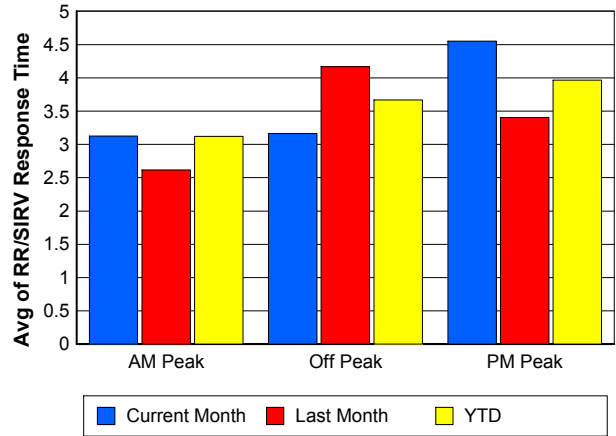
TMC Response Time



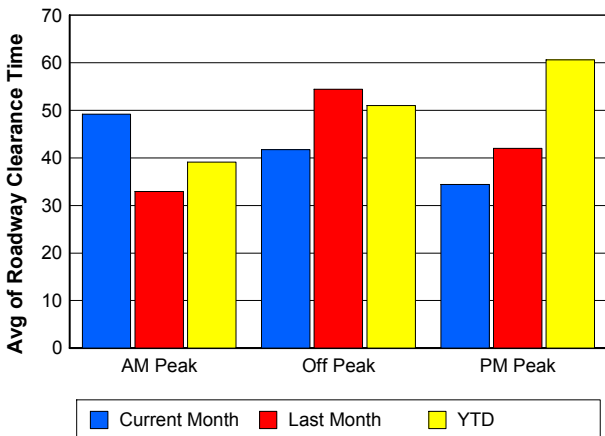
Road Ranger / SIRV Dispatch Time



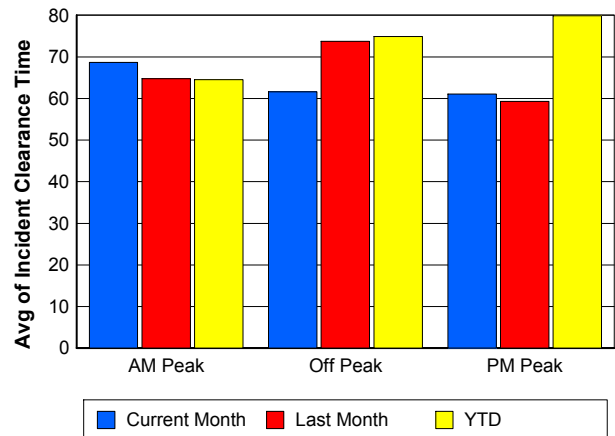
Road Ranger / SIRV Response Time



Roadway Clearance Time (2A)



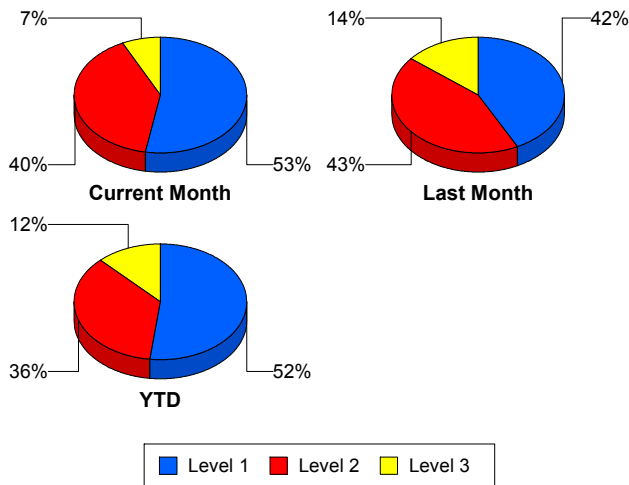
Incident Clearance Time (3B)



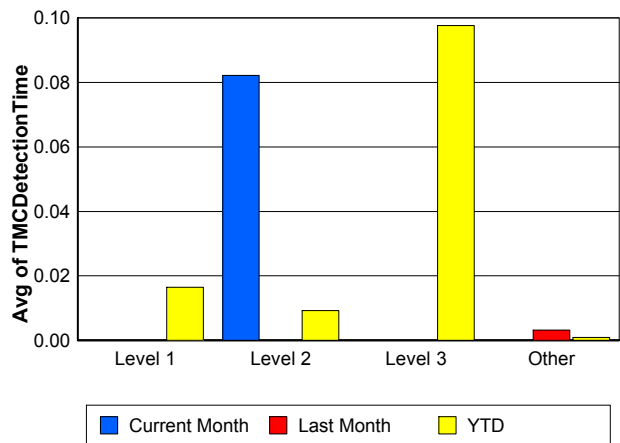
Performance Measures by Severity

	Level 1			Level 2			Level 3			Other		
	<u>This Month</u>	<u>Last Month</u>	<u>YTD</u>	<u>This Month</u>	<u>Last Month</u>	<u>YTD</u>	<u>This Month</u>	<u>Last Month</u>	<u>YTD</u>	<u>This Month</u>	<u>Last Month</u>	<u>YTD</u>
Number of Events	37	45	358	28	46	248	5	15	84	938	1,367	9,668
Number of Incidents	37	45	358	28	46	248	5	15	84	0	0	0
TMC Detection (min.)	0.00	0.00	0.02	0.08	0.00	0.01	0.00	0.00	0.10	0.00	0.00	0.00
TMC Verification (min.)	1.26	1.93	2.05	6.65	4.71	4.31	5.62	4.04	4.43	4.18	3.55	3.48
TMC Response (min.)	4.36	3.88	4.04	10.36	8.09	8.83	10.50	8.50	35.07	5.60	5.24	5.25
RR Dispatch Time (min.)	2.06	1.06	1.14	3.61	2.55	2.98	4.86	1.46	27.77	2.13	1.85	1.78
RR Resp. Time (min.)	2.30	2.85	2.92	6.75	5.54	5.85	5.64	7.04	7.29	3.53	3.41	3.56
Event Clearance (min.)	49.36	38.30	40.58	65.90	72.07	73.35	148.93	139.07	211.05	20.82	19.95	20.29
Roadway Clear. (min.)	16.24	13.82	14.52	56.68	54.25	53.77	141.39	103.08	190.35			
Incident Clearance (min.)	49.36	38.30	40.58	65.90	72.07	73.35	148.93	139.07	211.05			
# of Events w/ RR/SIRV	22	41	297	25	29	173	3	6	50	803	1,207	8,077
RR/SIRV Responses	22	41	297	25	29	173	3	6	50	803	1,207	8,077
RR/SIRV Activities	28	51	383	36	56	291	6	9	85	886	1,342	8,805

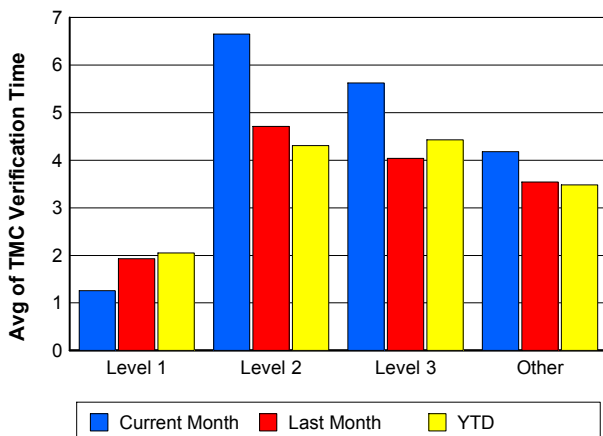
Number of Events / Severity



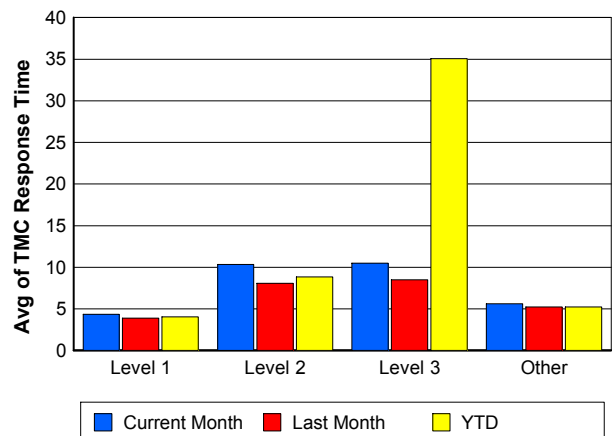
TMC Detection Time



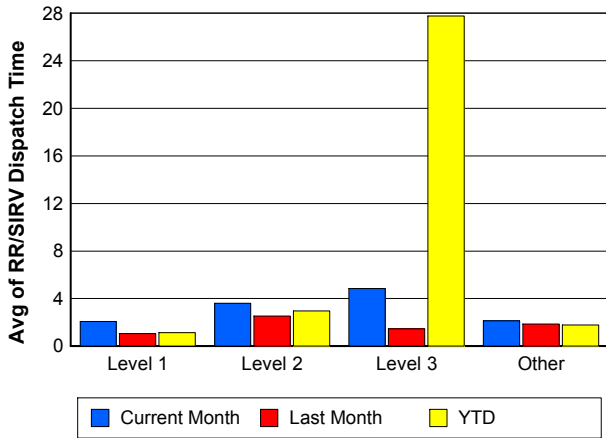
TMC Verification Time



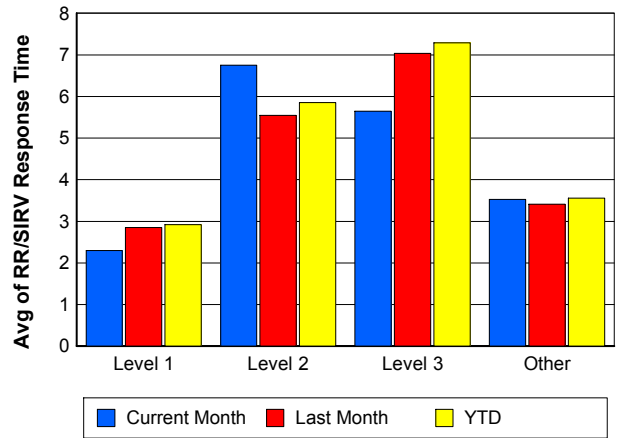
TMC Response Time



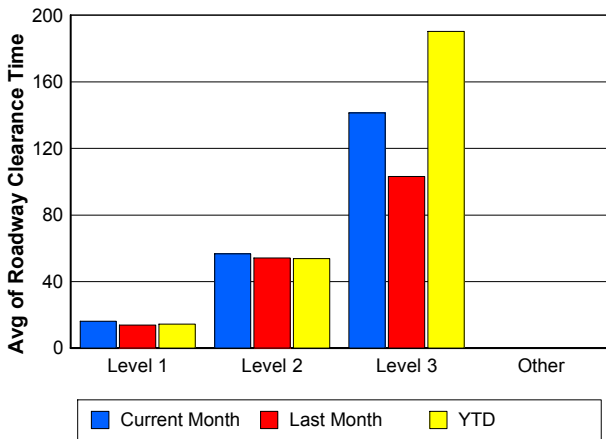
Road Ranger / SIRV Dispatch Time



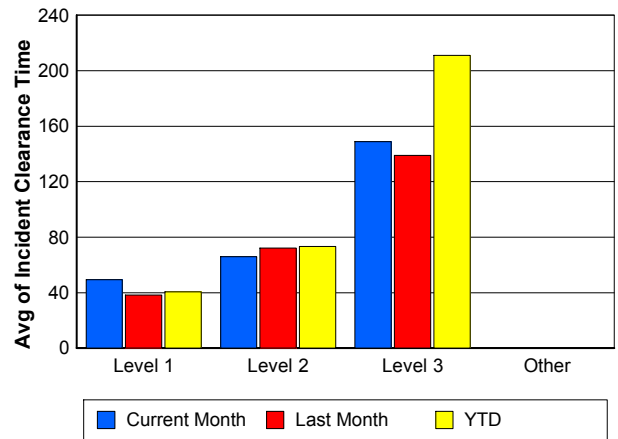
Road Ranger / SIRV Response Time



Roadway Clearance Time (2A)



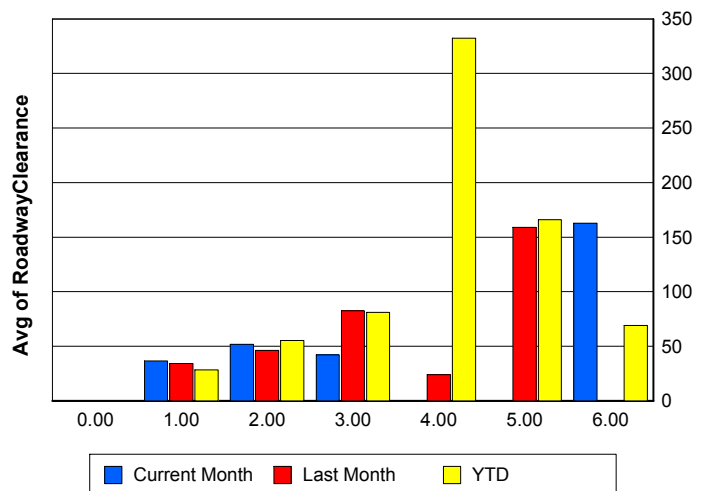
Incident Clearance Time (3B)



Roadway Clearance by Maximum Number of Lanes Blocked

	Current Month	Last Month	YTD
0			
1	36.54	34.25	28.41
2	51.76	46.25	55.27
3	42.19	82.42	81.17
4	0.00	23.90	332.33
5	0.00	159.02	166.12
6	162.67	0.00	69.12

Roadway Clearance Time (2A)



Performance Measures by Roadway

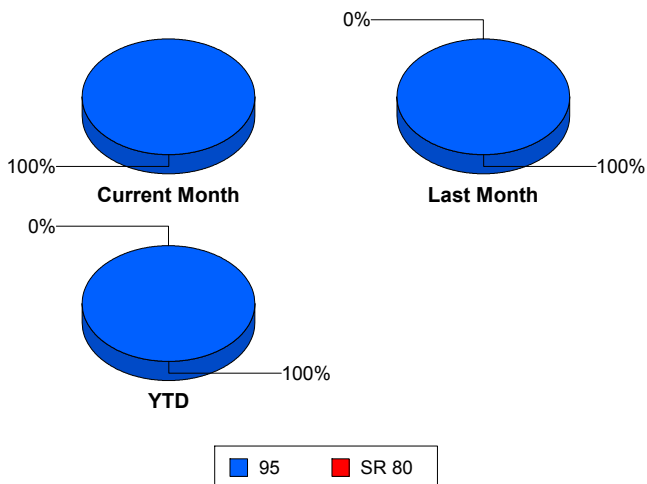
95

	<u>Current Month</u>	<u>Last Month</u>	<u>YTD</u>
Number of Events	1,008	1,472	10,354
Number of Incidents	70	105	687
TMC Detection (min.)	0.00	0.00	0.00
TMC Verification (min.)	4.15	3.54	3.46
TMC Response (min.)	5.73	5.28	5.45
RR Dispatch Time (min.)	2.18	1.84	1.93
RR Resp. Time (min.)	3.60	3.46	3.60
Event Clearance (min.)	23.76	23.24	23.28
Roadway Clear. (min.)	41.35	44.03	42.43
Incident Clearance (min.)	63.09	65.96	65.37
# of Events w/ RR/SIRV	853	1,283	8,597
RR/SIRV Responses	853	1,283	8,597
RR/SIRV Activities	956	1,458	9,564

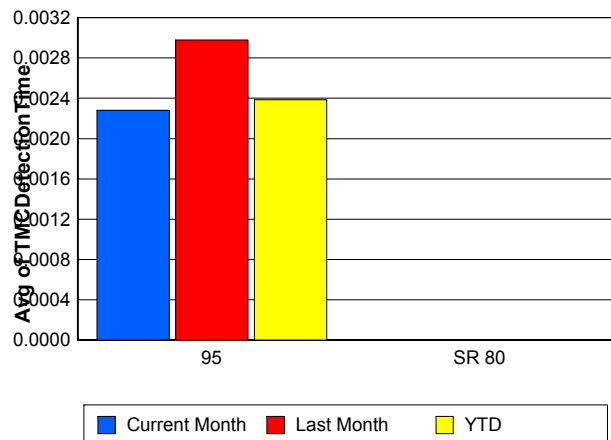
SR 80

	<u>Last Month</u>	<u>YTD</u>
Number of Events	1	4
Number of Incidents	1	3
TMC Detection (min.)	0.00	0.00
TMC Verification (min.)		0.00
TMC Response (min.)		
RR Dispatch Time (min.)		
RR Resp. Time (min.)		
Event Clearance (min.)	199.22	1,409.98
Roadway Clear. (min.)	40.90	1,789.50
Incident Clearance (min.)	199.22	1,847.09
# of Events w/ RR/SIRV	0	0
RR/SIRV Responses	0	0
RR/SIRV Activities	0	0

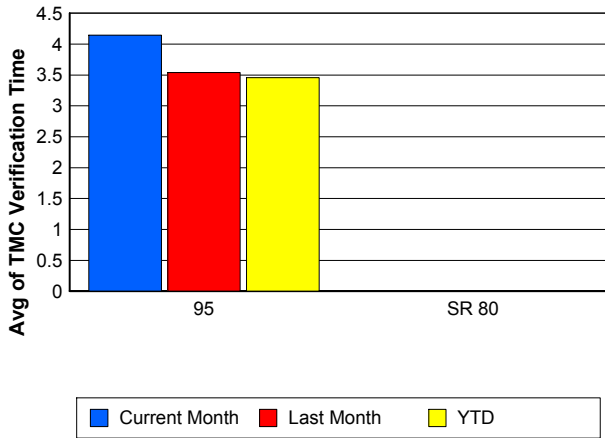
Number of Events / Roadway



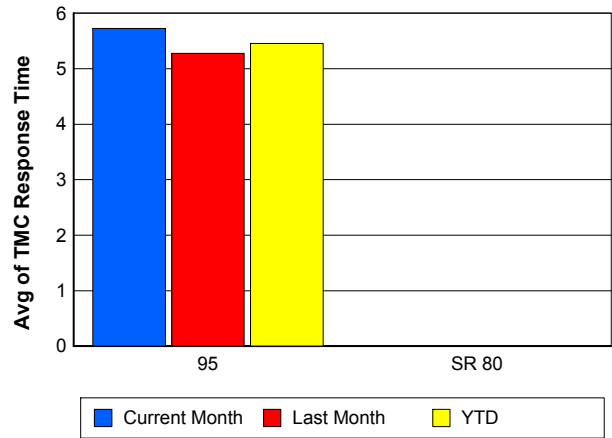
TMC Detection Time



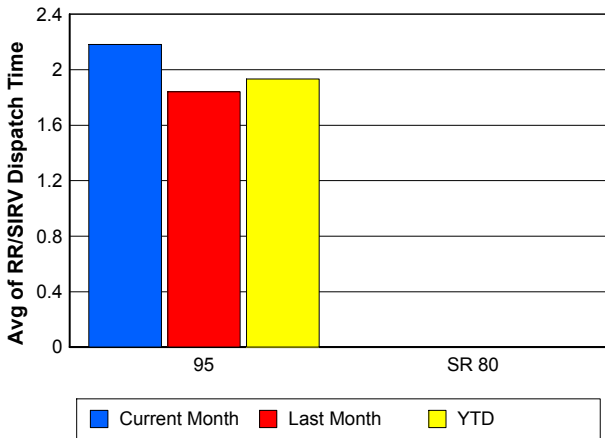
TMC Verification Time



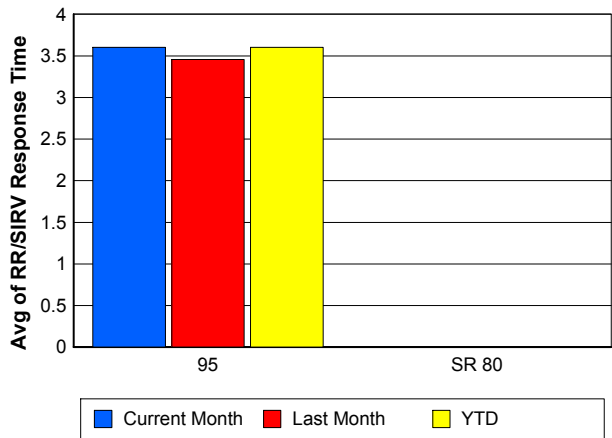
TMC Response Time



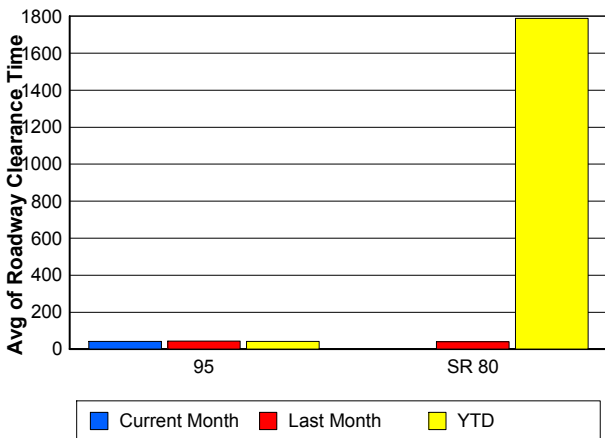
Road Ranger / SIRV Dispatch Time



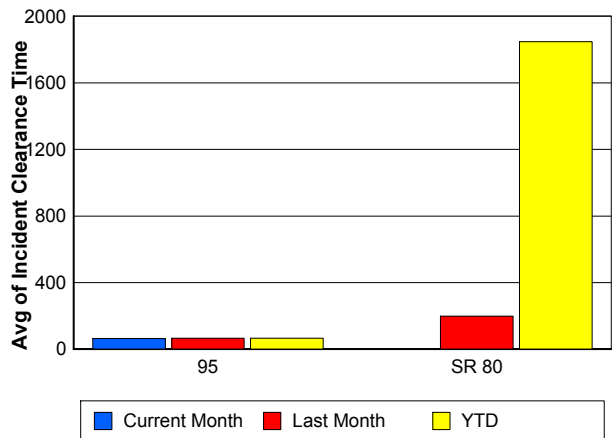
Road Ranger / SIRV Response Time



Roadway Clearance Time (2A)



Incident Clearance Time (3B)



Performance Measures by Event Type

Accident

	<u>Current Month</u>	<u>Last Month</u>	<u>YTD</u>
Number of Events	91	128	923
Number of Incidents	52	70	457
TMC Detection (min.)	0.03	0.00	0.01
TMC Verification (min.)	4.20	4.82	3.79
TMC Response (min.)	6.69	6.93	8.03
RR Dispatch Time (min.)	2.24	1.43	3.11
RR Response Time (min.)	4.45	5.50	4.92
Event Clearance (min.)	68.69	60.05	59.24
Roadway Clearance (min.)	40.49	51.94	45.59
Incident Clearance (min.)	66.89	81.33	73.30
# of Events w/ RR/SIRV	67	94	710
RR/SIRV Assists	67	94	710
RR/SIRV Activities	84	119	909

Debris on Roadway

	<u>Current Month</u>	<u>Last Month</u>	<u>YTD</u>
Number of Events	82	122	776
Number of Incidents	2	6	31
TMC Detection (min.)	0.00	0.00	0.00
TMC Verification (min.)	5.75	7.27	7.63
TMC Response (min.)	5.87	7.10	7.90
RR Dispatch Time (min.)	1.22	1.89	1.70
RR Response Time (min.)	4.65	5.20	6.21
Event Clearance (min.)	9.32	12.77	11.87
Roadway Clearance (min.)	25.85	35.81	21.08
Incident Clearance (min.)	26.05	38.31	23.69
# of Events w/ RR/SIRV	81	120	762
RR/SIRV Assists	81	120	762
RR/SIRV Activities	85	132	819

Disabled Vehicle

	<u>Current Month</u>	<u>Last Month</u>	<u>YTD</u>
Number of Events	750	1,116	7,497
Number of Incidents	11	20	135
TMC Detection (min.)	0.00	0.00	0.00
TMC Verification (min.)	4.12	3.19	3.36
TMC Response (min.)	5.61	4.35	4.53
RR Dispatch Time (min.)	2.33	1.43	1.56
RR Response Time (min.)	3.35	2.94	3.08
Event Clearance (min.)	19.34	18.06	18.14
Roadway Clearance (min.)	34.77	25.70	24.63
Incident Clearance (min.)	39.03	33.92	34.60
# of Events w/ RR/SIRV	673	1,013	6,829
RR/SIRV Assists	673	1,013	6,829
RR/SIRV Activities	756	1,151	7,548

Emergency Vehicles

	<u>Current Month</u>	<u>Last Month</u>	<u>YTD</u>
Number of Events	1	1	14
Number of Incidents	1	1	8
TMC Detection (min.)	0.00	0.00	0.00
TMC Verification (min.)	17.90	0.00	2.27
TMC Response (min.)	17.88	0.00	9.04
RR Dispatch Time (min.)	2.37	0.00	3.11
RR Response Time (min.)	15.52	0.00	5.54
Event Clearance (min.)	238.73	23.37	50.12
Roadway Clearance (min.)	229.17	12.00	46.52
Incident Clearance (min.)	238.73	23.37	52.24
# of Events w/ RR/SIRV	1	1	7
RR/SIRV Assists	1	1	7
RR/SIRV Activities	2	1	9

Other

	<u>Current Month</u>	<u>Last Month</u>	<u>YTD</u>
Number of Events	72	70	732
Number of Incidents	1	0	7
TMC Detection (min.)	0.00	0.00	0.00
TMC Verification (min.)	2.68	0.83	1.31
TMC Response (min.)	5.55	23.74	19.03
RR Dispatch Time (min.)	1.26	14.07	10.03
RR Response Time (min.)	4.37	6.75	7.33
Event Clearance (min.)	24.85	57.15	39.48
Roadway Clearance (min.)	53.73		40.35
Incident Clearance (min.)	57.65		52.93
# of Events w/ RR/SIRV	26	38	196
RR/SIRV Assists	26	38	196
RR/SIRV Activities	24	34	174

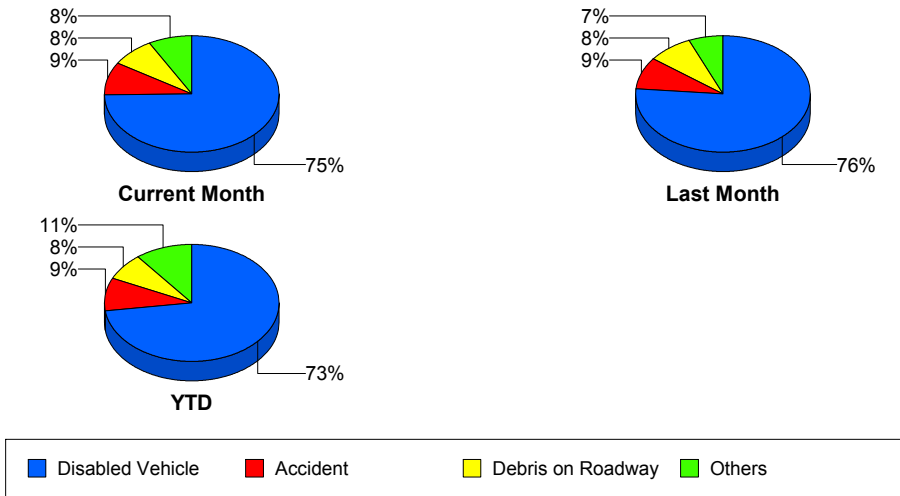
Police Activity

	<u>Current Month</u>	<u>Last Month</u>	<u>YTD</u>
Number of Events	5	19	322
Number of Incidents	1	4	31
TMC Detection (min.)	0.00	0.00	0.04
TMC Verification (min.)	0.00	2.59	0.30
TMC Response (min.)	6.12	24.58	11.27
RR Dispatch Time (min.)	1.35	3.22	6.12
RR Response Time (min.)	4.77	21.37	5.15
Event Clearance (min.)	48.06	28.68	26.64
Roadway Clearance (min.)	44.58	27.42	73.60
Incident Clearance (min.)	56.88	63.67	107.66
# of Events w/ RR/SIRV	1	2	25
RR/SIRV Assists	1	2	25
RR/SIRV Activities	2	2	28

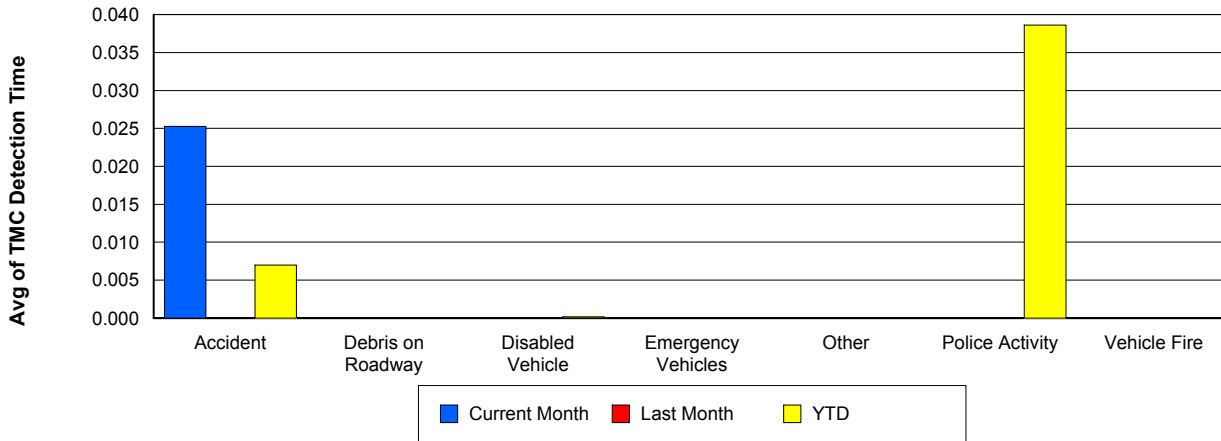
Vehicle Fire

	<u>Current Month</u>	<u>Last Month</u>	<u>YTD</u>
Number of Events	3	5	27
Number of Incidents	2	5	20
TMC Detection (min.)	0.00	0.00	0.00
TMC Verification (min.)	4.09	4.17	2.77
TMC Response (min.)		8.87	25.42
RR Dispatch Time (min.)		1.42	19.18
RR Response Time (min.)		7.45	6.24
Event Clearance (min.)	39.21	49.13	88.90
Roadway Clearance (min.)	13.92	35.53	73.88
Incident Clearance (min.)	51.67	49.13	106.13
# of Events w/ RR/SIRV	0	4	15
RR/SIRV Assists	0	4	15
RR/SIRV Activities	0	7	23

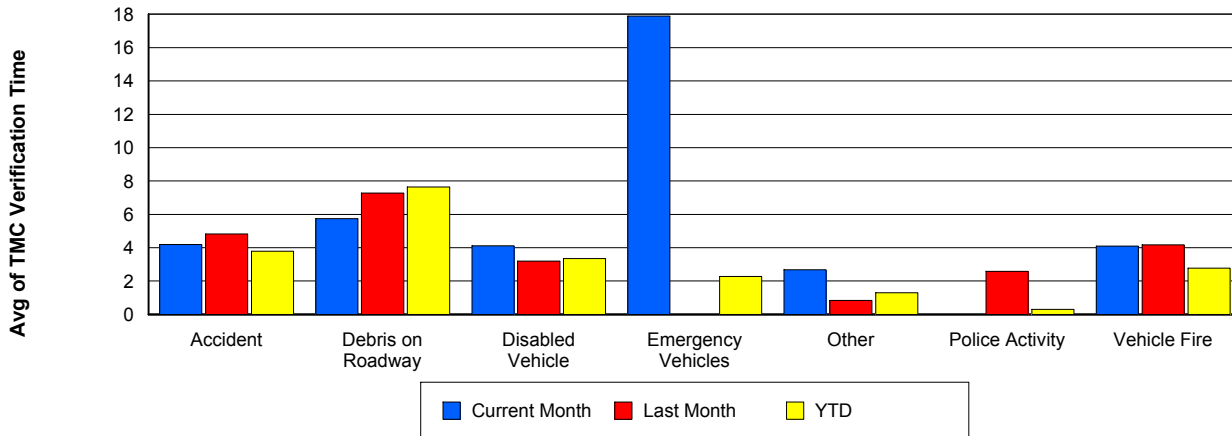
Number of Events / Event Type



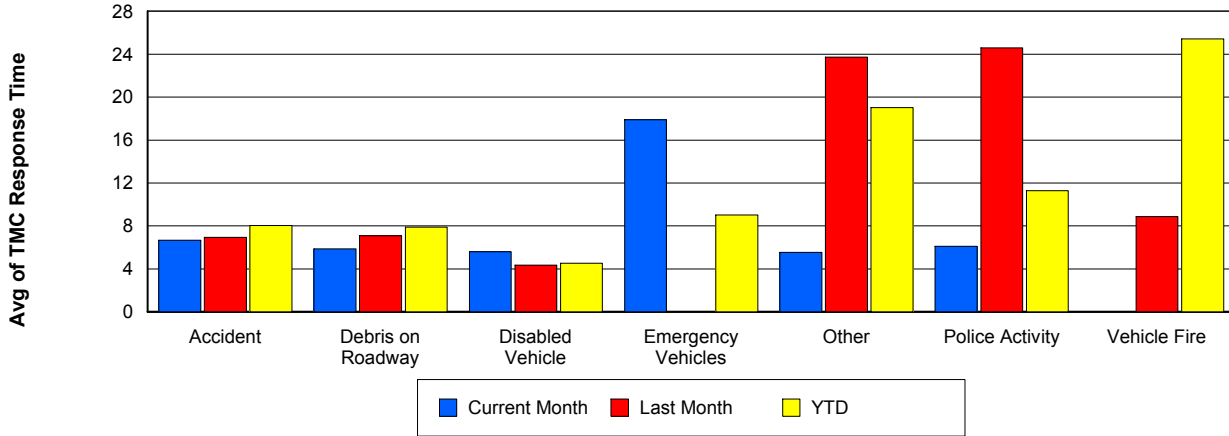
TMC Detection Time



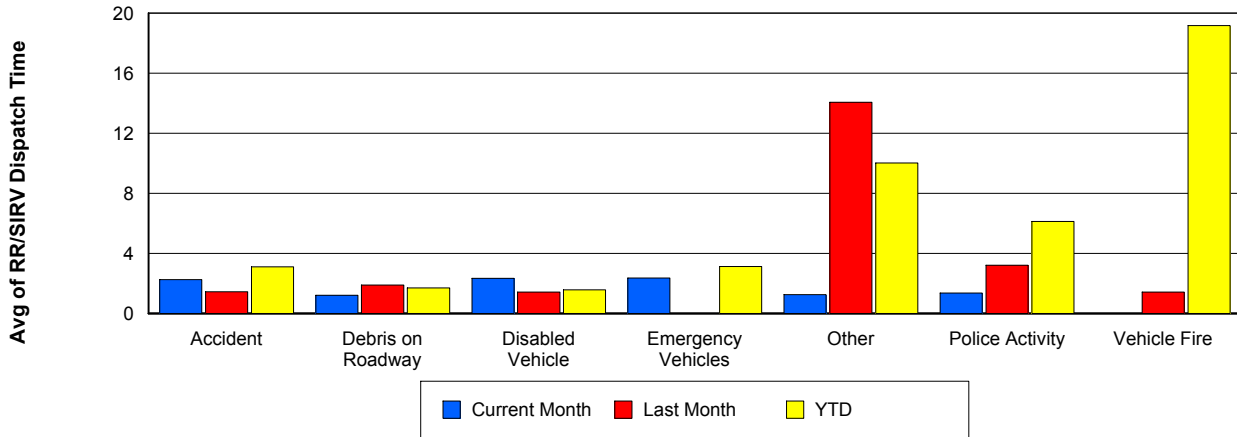
TMC Verification Time



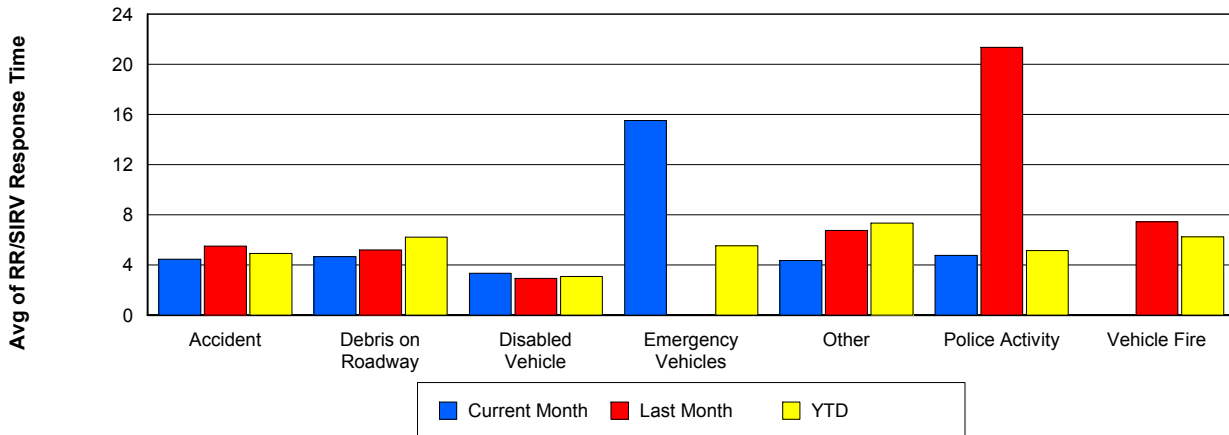
TMC Response Time



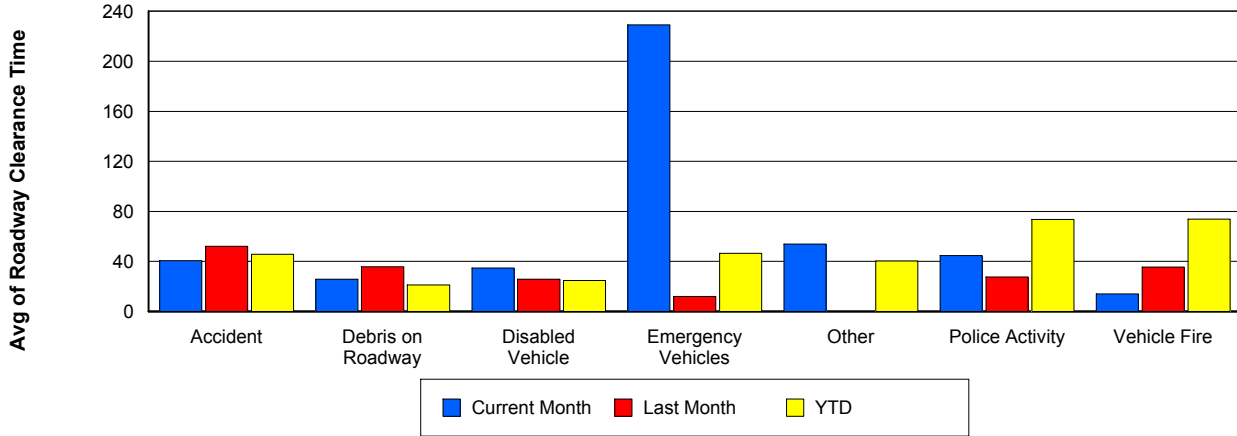
Road Ranger / SIRV Dispatch Time



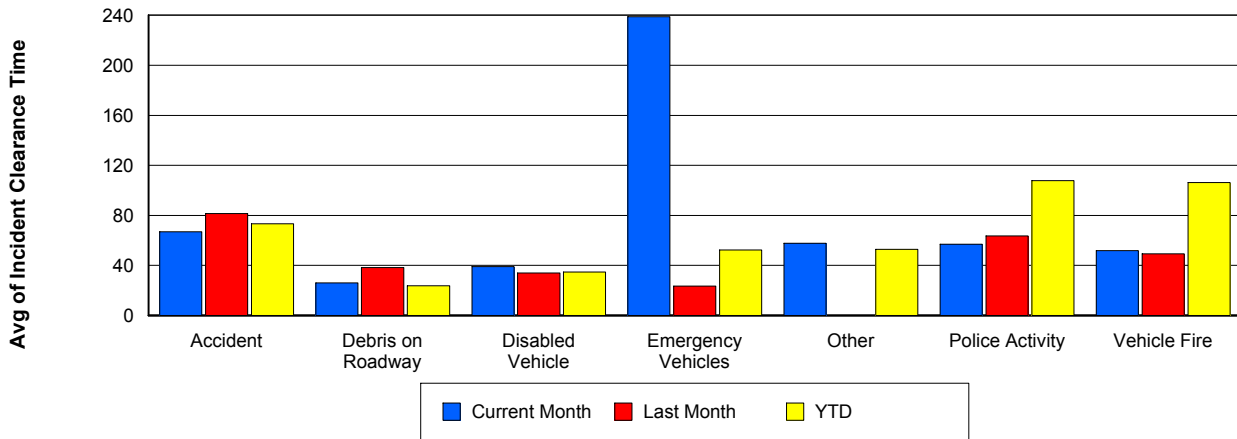
Road Ranger / SIRV Response Time



Roadway Clearance Time (2A)



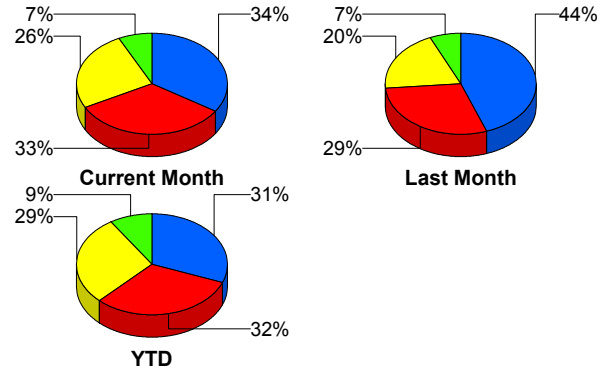
Incident Clearance Time (3B)



Incident Detection Methods

	Current Month	Last Month	YTD
Broward CCTV	0	1	7
Broward Road Ranger	0	0	6
Broward VideoWall	0	1	1
Construction CEI	0	0	1
District 4	2	2	17
Emergency Operations	0	0	1
FHP	24	47	212
I-95 Construction PIO	0	0	2
ITMS	1	3	8
ITMS CCTV	18	21	197
Local Police	0	0	1
Media	0	0	2
Motorist	2	0	12
Palm Beach Road Ran	23	31	218
Road Watcher	0	0	1
SmarTraveler (511)	0	0	4
Total	70	106	690

Total Incidents by Detection Method

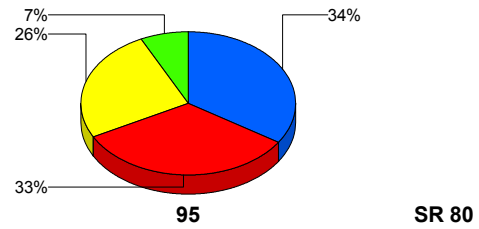


Incident Detection Methods by Roadway

		Current Month	Last Month	YTD
95	Broward CCTV	0	1	7
	Broward Road Ranger	0	0	6
	Broward VideoWall	0	1	1
	Construction CEI	0	0	1
	District 4	2	2	17
	FHP	24	47	211
	I-95 Construction PIO	0	0	2
	ITMS	1	2	7
	ITMS CCTV	18	21	197
	Local Police	0	0	1
	Media	0	0	2
	Motorist	2	0	12
	Palm Beach Road Ran	23	31	218
	Road Watcher	0	0	1
	SmarTraveler (511)	0	0	4
	Total	70	105	687
SR 80	Emergency Operations	0	0	1
	FHP	0	0	1
	ITMS	0	1	1
	Total	0	1	3
Total	70	106	690	

Total Events by Roadway and Detection Method

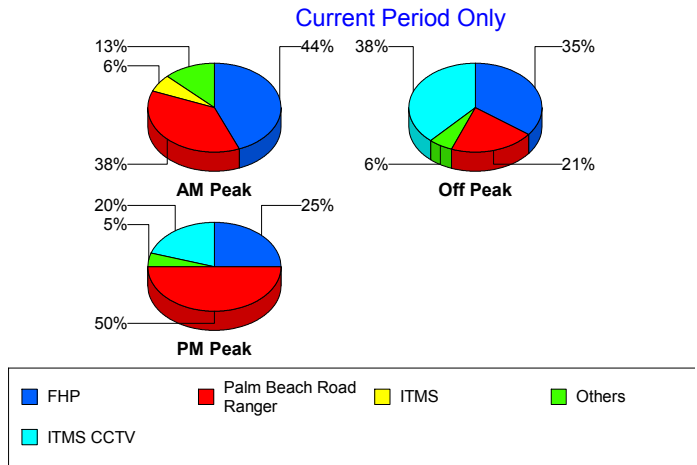
Current Period Only



Incident Detection Methods by Peak Period

		Current Month	Last Month	YTD
AM Peak	Broward CCTV	0	0	2
	Broward Road Ranger	0	0	3
	District 4	0	1	9
	FHP	7	16	75
	ITMS	1	1	4
	ITMS CCTV	1	3	28
	Motorist	1	0	6
	Palm Beach Road Ran	6	16	76
	Road Watcher	0	0	1
	SmarTraveler (511)	0	0	3
	Total	16	37	207
Off Peak	Broward CCTV	0	0	4
	Broward Road Ranger	0	0	1
	Broward VideoWall	0	1	1
	Construction CEI	0	0	1
	District 4	1	0	6
	FHP	12	19	94
	I-95 Construction PIO	0	0	2
	ITMS	0	1	3
	ITMS CCTV	13	14	105
	Motorist	1	0	3
	Palm Beach Road Ran	7	9	76
	SmarTraveler (511)	0	0	1
	Total	34	44	297
PM Peak	Broward CCTV	0	1	1
	Broward Road Ranger	0	0	2
	District 4	1	1	2
	Emergency Operations	0	0	1
	FHP	5	12	43
	ITMS	0	1	1
	ITMS CCTV	4	4	64

Total Events by Peak Period and Detection Method

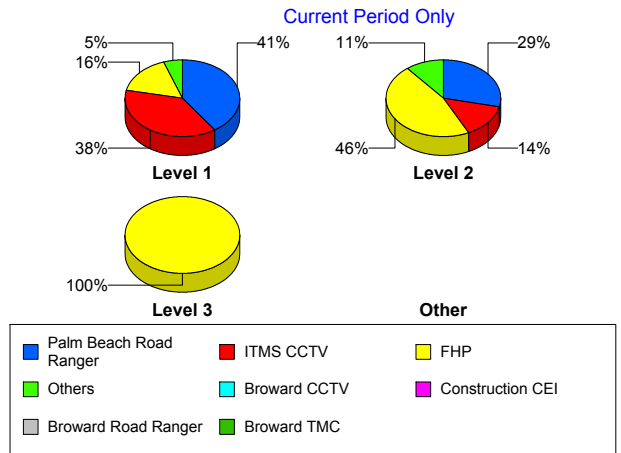


		Current Month	Last Month	YTD
PM Peak	Local Police	0	0	1
	Media	0	0	2
	Motorist	0	0	3
	Palm Beach Road Ran	10	6	66
	Total	20	25	186
Total		70	106	690

Incident Detection Methods by Severity

		Current Month	Last Month	YTD
Level 1	Broward CCTV	0	1	5
	Broward Road Ranger	0	0	4
	District 4	1	2	13
	FHP	6	10	78
	I-95 Construction PIO	0	0	1
	ITMS	0	1	2
	ITMS CCTV	14	7	86
	Local Police	0	0	1
	Motorist	1	0	8
	Palm Beach Road Ran	15	24	158
	Road Watcher	0	0	1
	SmarTraveler (511)	0	0	1
	Total	37	45	358
Level 2	Broward Road Ranger	0	0	2
	Broward VideoWall	0	1	1
	District 4	1	0	4
	FHP	13	26	99
	I-95 Construction PIO	0	0	1
	ITMS	1	1	5
	ITMS CCTV	4	12	80
	Media	0	0	1
	Motorist	1	0	3
	Palm Beach Road Ran	8	6	49

Total Events by Severity and Detection Method



		Current Month	Last Month	YTD
Level 2	SmarTraveler (511)	0	0	3
	Total	28	46	248
Level 3	Broward CCTV	0	0	2
	Construction CEI	0	0	1
	Emergency Operations	0	0	1
	FHP	5	11	35
	ITMS	0	1	1
	ITMS CCTV	0	2	31
	Media	0	0	1
	Motorist	0	0	1
	Palm Beach Road Ran	0	1	11
	Total	5	15	84
Total		70	106	690

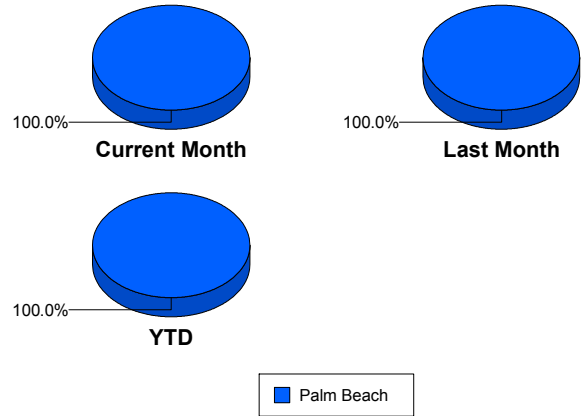
Road Ranger / SIRV Performance Measures

Road Ranger / SIRV Performance By County

Values presented are:
 - Total Events with a RR/SIRV Response
 - Total RR/SIRV Responses,
 - Total Activities Performed

	Current Mo	Last Month	YTD
Palm Beach	1,131	1,649	11,193
	1,182	1,731	11,605
	1,260	1,863	12,392

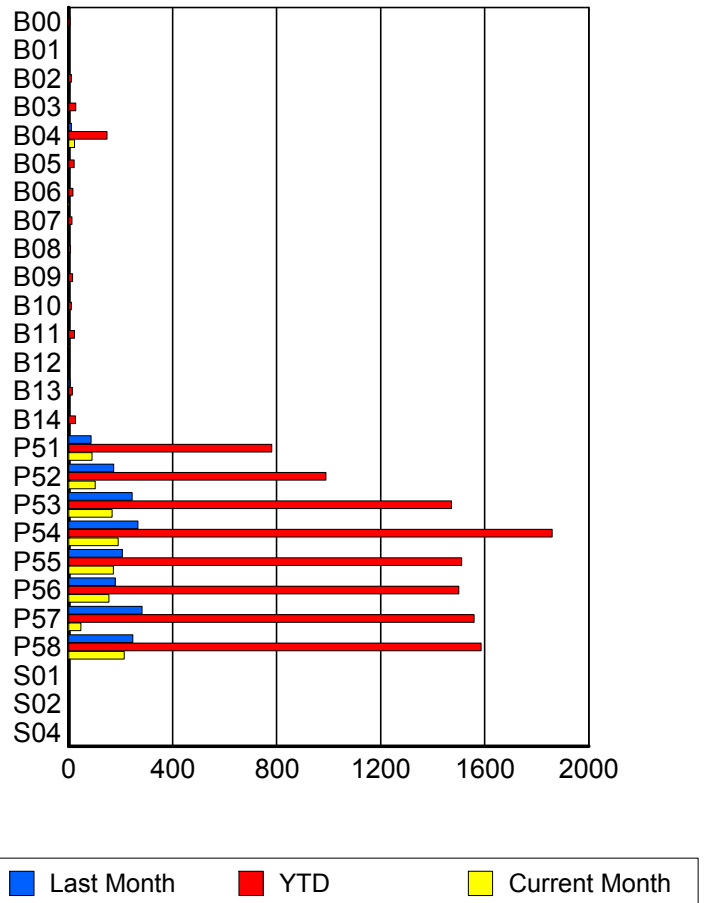
RR/SIRV Responses per County



Road Ranger / SIRV Performance By Truck

	Current Mo	Last Month	YTD
B00	0	2	5
	0	2	5
	0	2	5
B01	0	0	1
	0	0	1
	0	0	1
B02	4	2	10
	4	2	10
	4	2	10
B03	2	3	27
	2	3	27
	2	3	28
B04	23	11	146
	23	11	147
	25	15	170
B05	2	0	20
	2	0	21
	2	0	22
B06	2	3	17
	2	3	17
	2	3	17
B07	3	3	13
	3	3	13
	3	3	13
B08	2	2	7
	2	2	7
	3	2	8

RR/SIRV Responses per Truck



	Current Mo	Last Month	YTD
B09	0	1	15
	0	1	15
	0	1	15
B10	0	2	10
	0	3	11
	0	3	11
B11	2	3	23
	2	3	23
	2	3	24
B12	0	0	4
	0	0	4
	0	0	4
B13	0	5	14
	0	5	14
	0	5	15
B14	3	3	26
	3	3	26
	3	3	27
P51	90	83	771
	90	87	781
	95	90	818
P52	102	171	982
	102	174	989
	110	194	1,058
P53	165	241	1,454
	167	245	1,472
	175	256	1,558
P54	188	262	1,837
	191	267	1,860
	205	287	1,995
P55	169	204	1,497
	172	207	1,512
	185	228	1,620
P56	154	177	1,480
	155	180	1,500
	164	198	1,615
P57	47	276	1,543
	47	282	1,559
	55	299	1,673
P58	210	240	1,561
	214	247	1,586
	224	265	1,680
S01	0	1	1
	0	1	1
	0	1	1

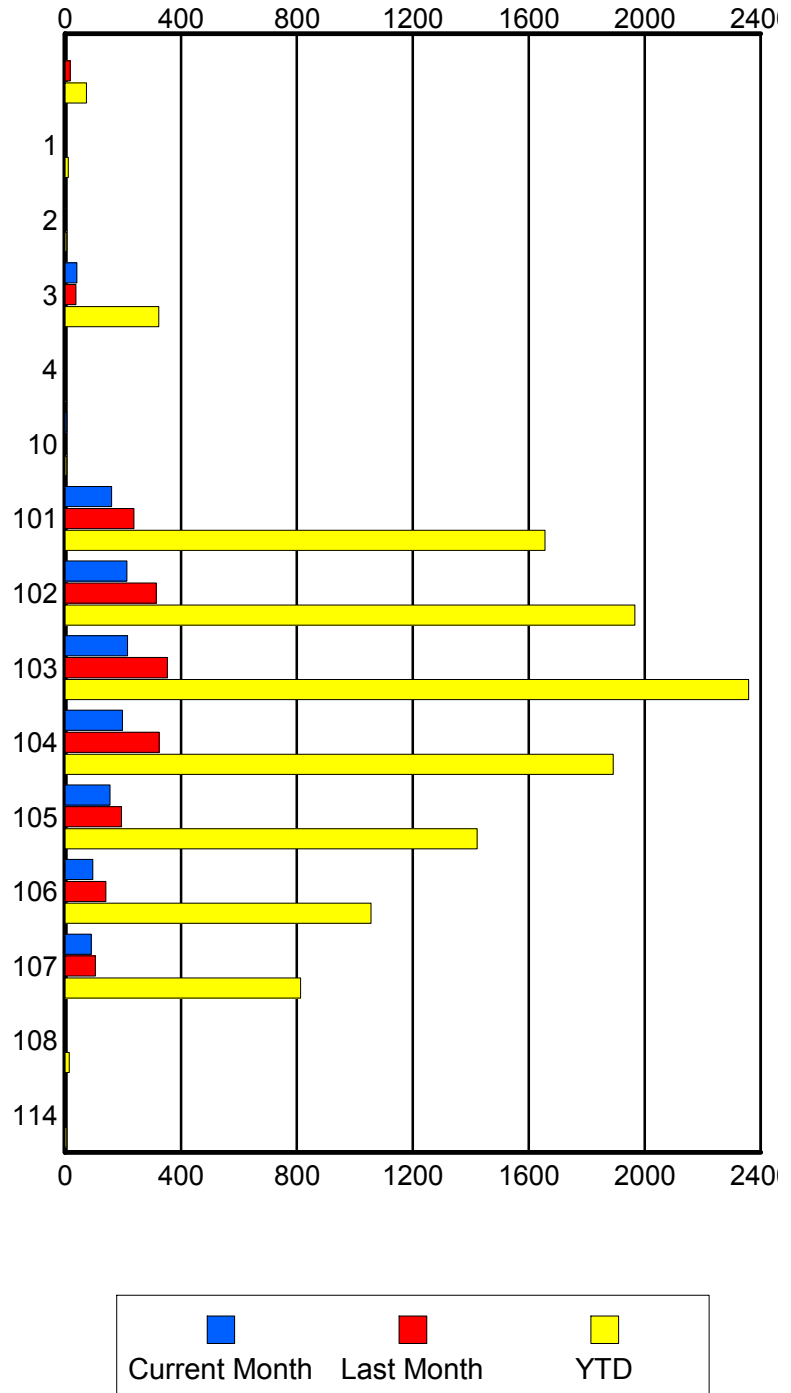
	Current Mo	Last Month	YTD
S02	1	0	2
	1	0	2
	1	0	2
S04	0	0	2
	0	0	2
	0	0	2

Road Ranger / SIRV Performance By Beat

	Current Mo	Last Month	YTD
	3	18	74
	3	18	74
	3	18	74
1	0	3	11
	0	3	11
	0	3	12
2	2	0	6
	2	0	6
	2	0	7
3	39	36	317
	41	37	323
	44	41	350
4	0	1	2
	0	1	2
	0	1	2
10	6	0	6
	6	0	6
	9	0	9
101	160	234	1,636
	161	238	1,656
	173	254	1,778
102	210	308	1,940
	214	315	1,966
	224	339	2,088
103	214	345	2,327
	216	353	2,359
	236	376	2,535
104	194	320	1,868
	198	325	1,891
	211	350	2,022
105	153	193	1,409
	155	195	1,422
	162	213	1,516
106	96	137	1,041
	96	141	1,056
	101	159	1,131
107	90	100	802
	90	105	813
	95	109	848
108	0	0	13
	0	0	14
	0	0	14
114	0	0	6
	0	0	6
	0	0	6

Values presented are:
 - Total Events with a RR/SIRV Response
 - Total RR/SIRV Responses,
 - Total Activities Performed

RR/SIRV Responses per Beat

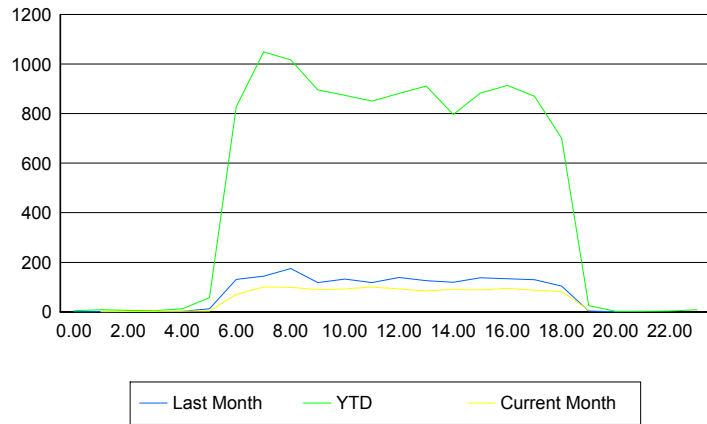


Road Ranger / SIRV Performance By Time of Day

Values presented are:
 - Total Events with a RR/SIRV Response
 - Total RR/SIRV Responses,
 - Total Activities Performed

	Current Mo	Last Month	YTD
12AM-1AM	0 0 0	1 1 1	5 5 5
1AM-2AM	1 1 1	0 0 0	6 8 8
2AM-3AM	0 0 0	1 1 1	6 6 7
3AM-4AM	0 0 0	0 0 0	4 4 4
4AM-5AM	0 0 0	2 2 2	9 12 13
5AM-6AM	3 3 3	10 12 13	53 57 60
6AM-7AM	66 70 76	125 131 140	794 828 874
7AM-8AM	98 100 109	137 144 156	1,005 1,049 1,126
8AM-9AM	95 99 103	165 175 190	978 1,017 1,091
9AM-10AM	84 90 94	114 118 133	864 896 979
10AM-11AM	90 92 96	123 132 140	841 874 923
11AM-12PM	95 100 106	112 118 131	819 850 919
12PM-1PM	87 93 98	132 139 148	847 882 941

Number of Responses / Hour of the Day



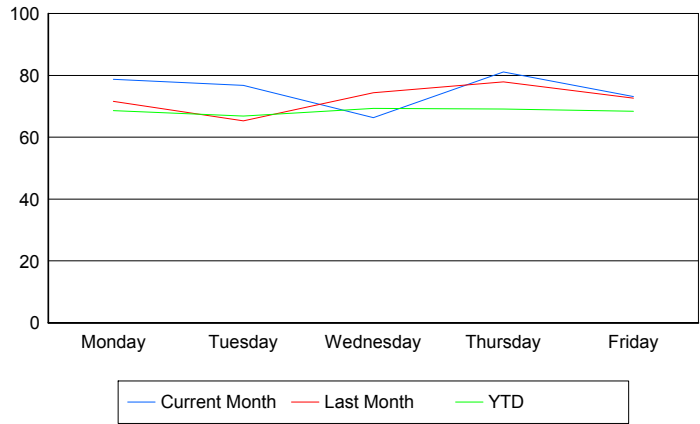
	Current Mo	Last Month	YTD
1PM-2PM	75	124	884
	84	126	911
	90	136	985
2PM-3PM	86	118	768
	91	120	797
	99	129	846
3PM-4PM	87	130	853
	88	138	883
	93	149	946
4PM-5PM	93	125	885
	95	134	914
	106	142	967
5PM-6PM	83	124	840
	87	130	870
	90	138	914
6PM-7PM	81	101	693
	82	104	701
	88	108	741
7PM-8PM	7	3	25
	7	3	25
	8	3	27
8PM-9PM	0	1	2
	0	1	2
	0	1	2
9PM-10PM	0	1	1
	0	2	2
	0	2	2
10PM-11PM	0	0	3
	0	0	3
	0	0	3
11PM-12AM	0	0	8
	0	0	9
	0	0	9

Road Ranger / SIRV Performance By Day of Week

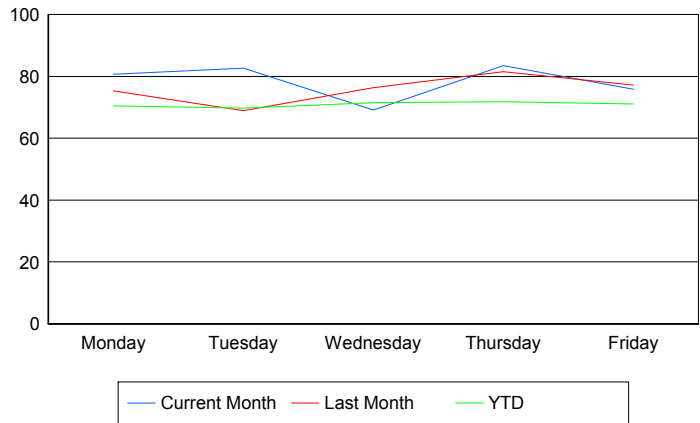
Values presented are:
 - Total Events with a RR/SIRV Response
 - Total RR/SIRV Responses,
 - Total Activities Performed

	Current Mo	Last Month	YTD
Monday	239	285	2,214
	245	300	2,276
	256	320	2,405
Tuesday	233	257	2,165
	250	271	2,255
	263	295	2,399
Wednesday	199	370	2,258
	208	380	2,331
	219	411	2,505
Thursday	245	382	2,286
	252	399	2,376
	275	426	2,552
Friday	217	357	2,277
	227	381	2,367
	247	411	2,531

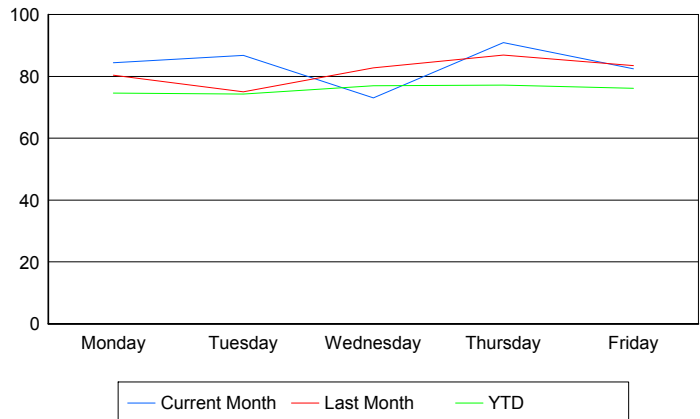
Avg # of events with a RR/SIRV Response per Day of the Week



Avg # of RR/SIRV Responses per Day of the Week



Avg # of RR/SIRV Activities Performed per Day of the Week



Road Ranger / SIRV Responses per Time of Day and Day of Week

