



Monthly Performance Measures Report Palm Beach County



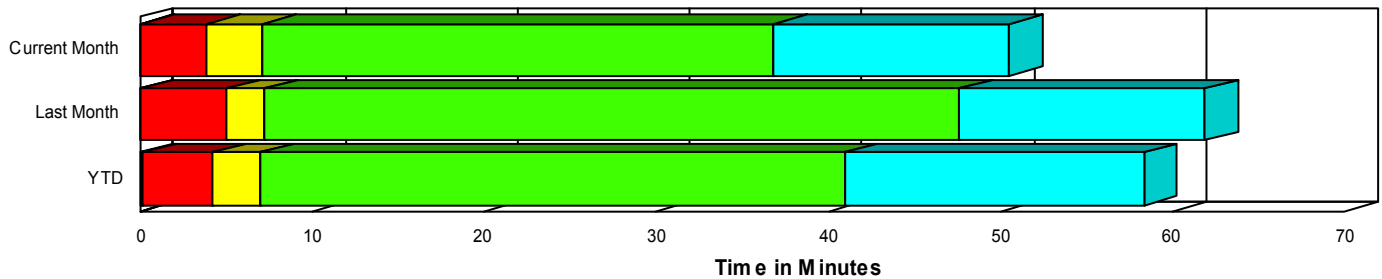
Created on:
August 04, 2008
10:02 am

Period From Jul 1, 2008 to Jul 31, 2008

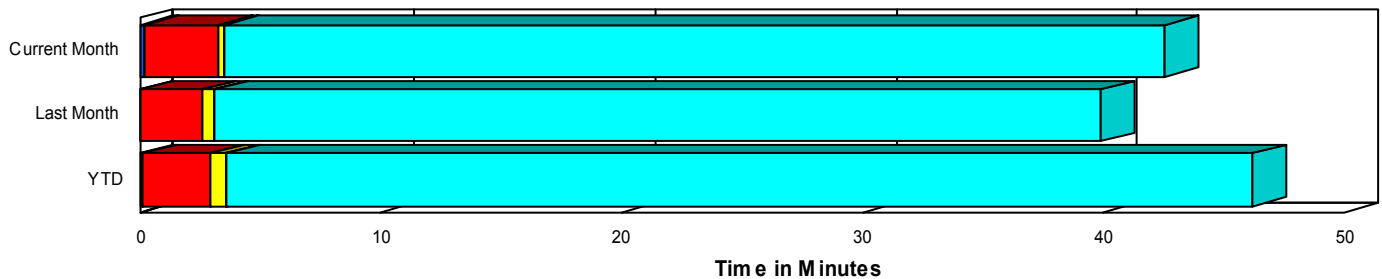
Performance Measures Summary

	Traffic Events (No Lanes Blocked)			Incidents (Lanes Blocked)		
	<u>This Month</u>	<u>Last Month</u>	<u>YTD</u>	<u>This Month</u>	<u>Last Month</u>	<u>YTD</u>
Number of Events	2,612	2,452	17,844	112	114	1,110
TMC Detection (min.)	0.19	0.00	0.10	0.10	0.01	0.15
TMC Verification (min.)	3.07	2.64	2.87	3.83	5.08	4.10
TMC Response (min.)	3.51	3.18	3.61	6.90	7.40	7.07
RR Dispatch Time (min.)	1.00	0.95	1.25	2.73	2.38	2.39
RR Response Time (min.)	2.52	2.25	2.39	4.16	5.03	4.79
Roadway Clearance (min.)				36.10	47.34	40.58
Event Clearance (min.)	42.71	39.96	46.30	49.72	53.44	56.84
# of Events w/ RR/SIRV	2,519	2,370	17,157	108	111	1,029
RR/SIRV Responses	2,519	2,370	17,264	108	111	1,106
RR/SIRV Activities	2,679	2,547	18,609	162	161	1,480

Incident Clearance TimeLine



Traffic Event(Non-Lane Blockage) Time-Line



■ Avg. TMC Detection Time	■ Avg. Time from TMC Response to Roadway Clearance*
■ Avg. Time from TMC Detection to TMC Verification	■ Avg. Time from Roadway Clearance to Incident/Event Clearance**
■ Avg. Time from TMC Verification to TMC Response	

* Roadway clearance equals all travel lanes open

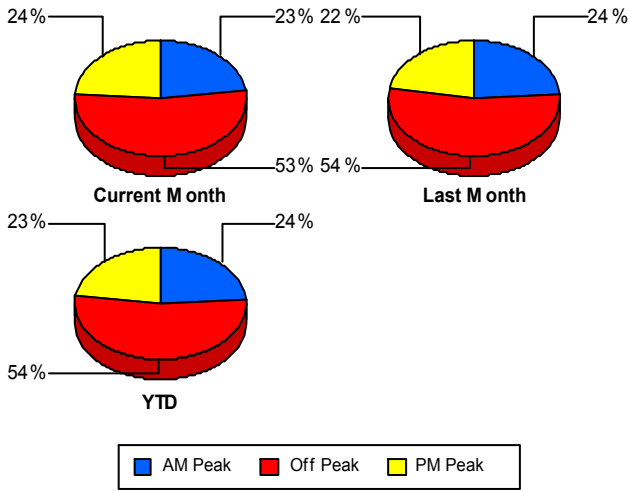
** Incident clearance equals time when last responder has left the scene

Performance Measures by Peak Period

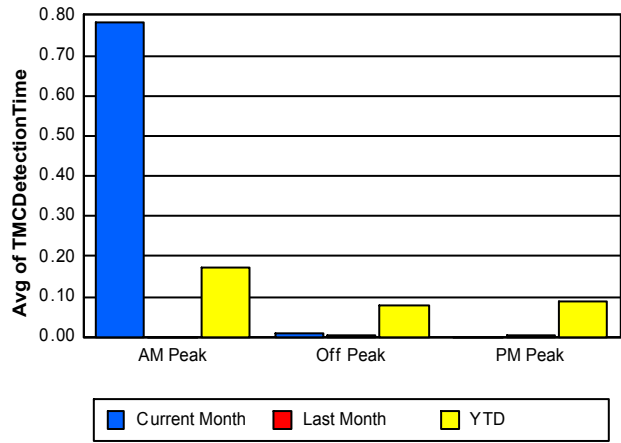
Note: AM peak period is defined as 6am to 10am and PM peak period is defined as 3pm to 7pm.

	AM Peak			Off Peak			PM Peak		
	<u>Current Month</u>	<u>Last Month</u>	<u>YTD</u>	<u>Current Month</u>	<u>Last Month</u>	<u>YTD</u>	<u>Current Month</u>	<u>Last Month</u>	<u>YTD</u>
Number of Events	627	612	4,513	1,449	1,385	10,147	648	569	4,294
Number of Incidents	27	29	280	63	66	599	22	19	231
TMC Detection (min.)	0.78	0.00	0.17	0.01	0.00	0.08	0.00	0.00	0.09
TMC Verification (min.)	2.57	2.53	2.44	3.54	3.08	3.22	2.63	2.16	2.81
TMC Response (min.)	2.67	3.12	3.15	4.34	3.94	4.29	3.05	2.30	3.33
RR Dispatch Time (min.)	0.76	0.88	1.17	1.34	1.27	1.52	0.79	0.54	1.00
RR Response Time (min.)	1.97	2.26	2.03	3.01	2.69	2.80	2.26	1.77	2.38
Event Clearance (min.)	53.95	40.45	49.41	48.76	47.92	50.80	19.52	22.77	35.11
Roadway Clearance (min.)	33.98	59.35	36.65	37.27	42.64	44.80	35.35	45.31	34.40
Incident Clearance (min.)	43.48	43.11	53.42	50.59	55.86	60.90	54.88	60.81	50.46
# of Events w/ RR/SIRV	597	589	4,299	1,390	1,329	9,699	640	563	4,188
RR/SIRV Responses	597	589	4,344	1,390	1,329	9,802	640	563	4,224
RR/SIRV Activities	649	637	4,728	1,512	1,461	10,810	680	610	4,551

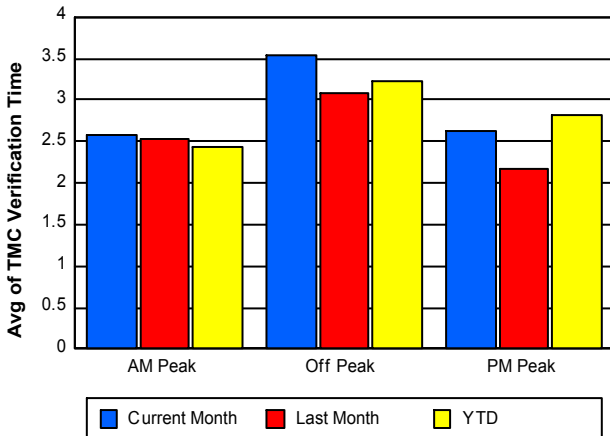
Number of Events / Peak Period



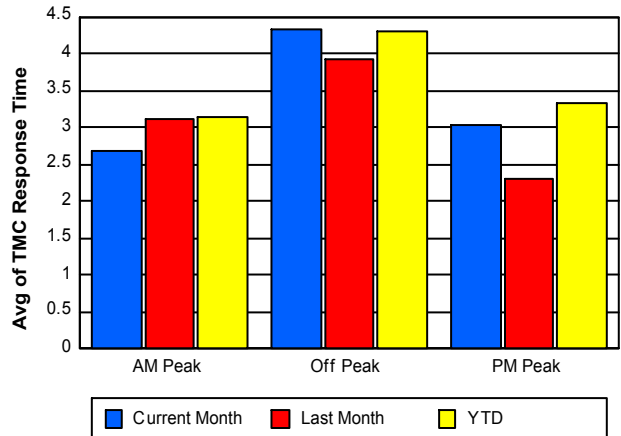
TMC Detection Time



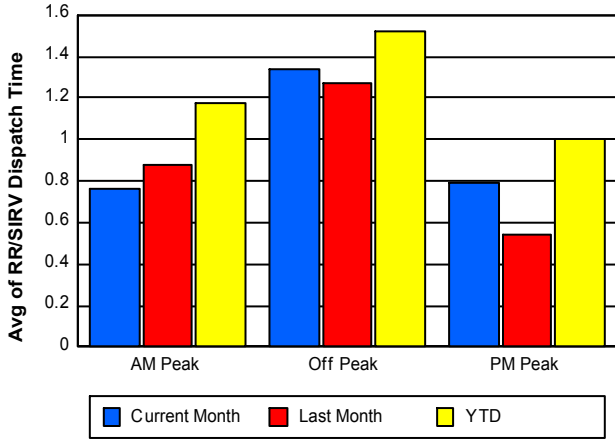
TMC Verification Time



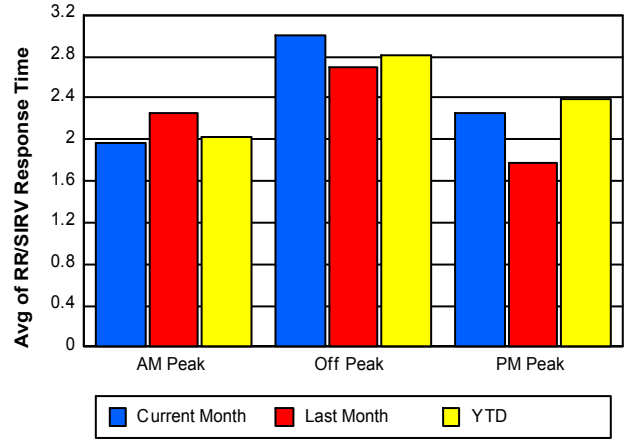
TMC Response Time



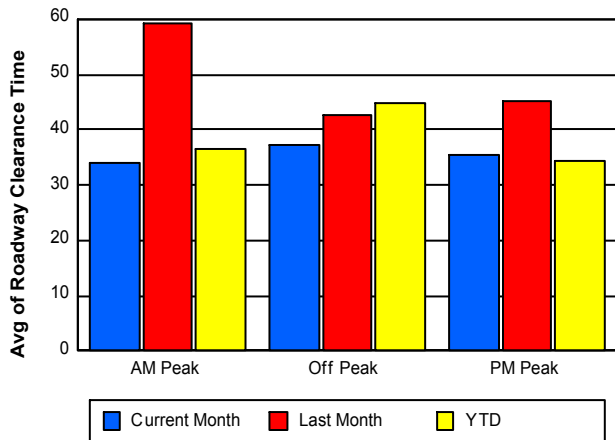
Road Ranger / SIRV Dispatch Time



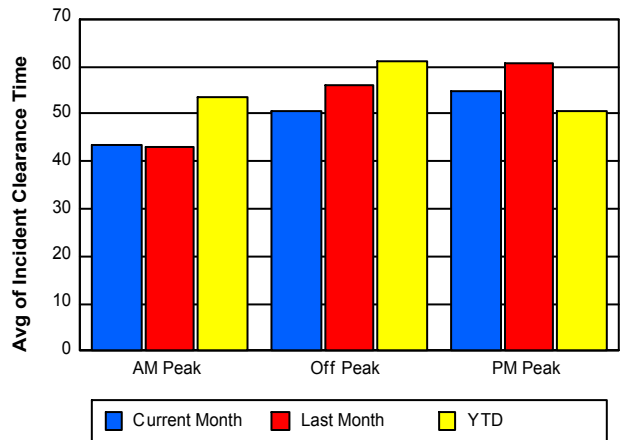
Road Ranger / SIRV Response Time



Roadway Clearance Time (2A)



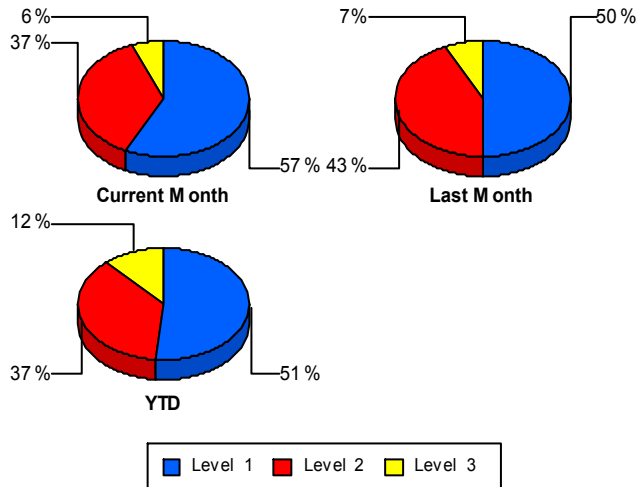
Incident Clearance Time (3B)



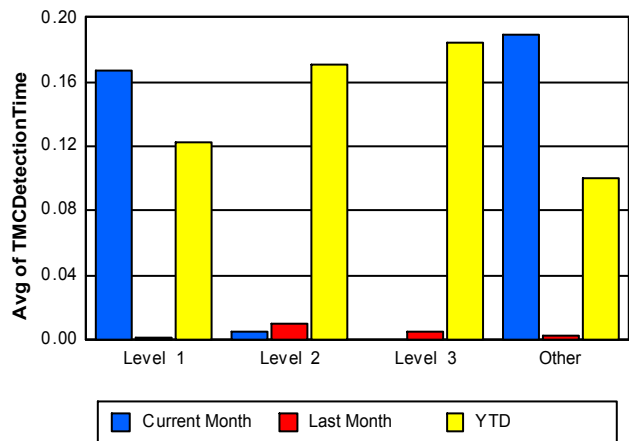
Performance Measures by Severity

	Level 1			Level 2			Level 3			Other		
	<u>This Month</u>	<u>Last Month</u>	<u>YTD</u>	<u>This Month</u>	<u>Last Month</u>	<u>YTD</u>	<u>This Month</u>	<u>Last Month</u>	<u>YTD</u>	<u>This Month</u>	<u>Last Month</u>	<u>YTD</u>
Number of Events	64	57	571	41	49	411	7	8	128	2,612	2,452	17,844
Number of Incidents	64	57	571	41	49	411	7	8	128	0	0	0
TMC Detection (min.)	0.17	0.00	0.12	0.01	0.01	0.17	0.00	0.00	0.18	0.19	0.00	0.10
TMC Verification (min.)	2.44	2.15	2.20	5.72	7.75	6.61	5.49	9.65	4.53	3.07	2.64	2.87
TMC Response (min.)	4.80	4.61	4.41	10.01	9.86	9.50	7.12	11.44	10.78	3.51	3.18	3.61
RR Dispatch Time (min.)	1.54	1.61	1.54	4.43	3.48	2.82	3.45	1.16	4.75	1.00	0.95	1.25
RR Resp. Time (min.)	3.27	3.04	2.94	5.58	6.39	6.67	3.72	10.27	6.71	2.52	2.25	2.39
Event Clearance (min.)	27.77	28.77	32.31	69.01	70.26	69.86	137.35	126.23	124.42	42.71	39.96	46.30
Roadway Clear. (min.)	13.37	11.62	13.06	57.84	60.14	56.66	116.62	223.44	111.70			
Incident Clearance (min.)	27.77	28.77	32.31	69.01	70.26	69.86	137.35	126.23	124.42			
# of Events w/ RR/SIRV	61	55	522	40	48	393	7	8	114	2,519	2,370	17,157
RR/SIRV Responses	61	55	542	40	48	421	7	8	143	2,519	2,370	17,264
RR/SIRV Activities	87	73	668	63	74	591	12	14	221	2,679	2,547	18,609

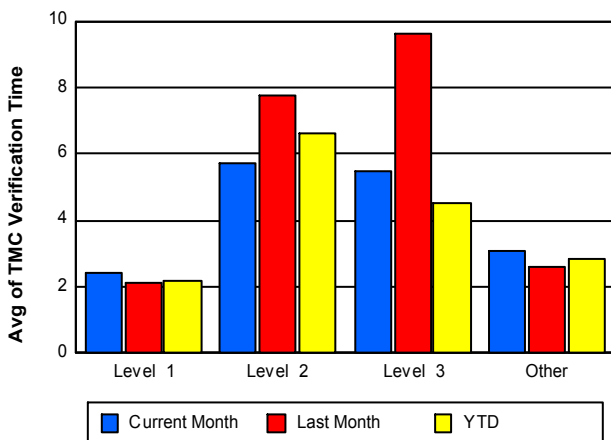
Number of Events / Severity



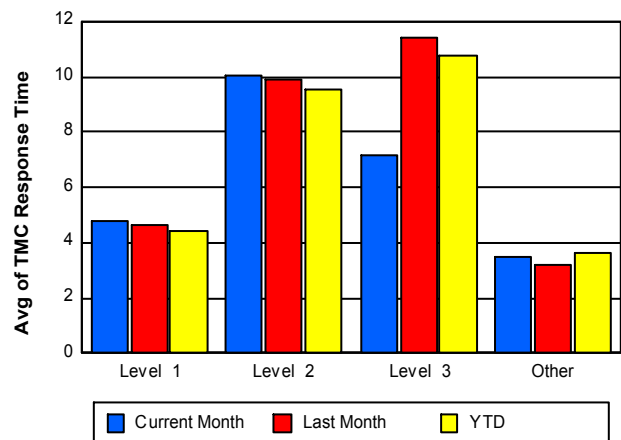
TMC Detection Time



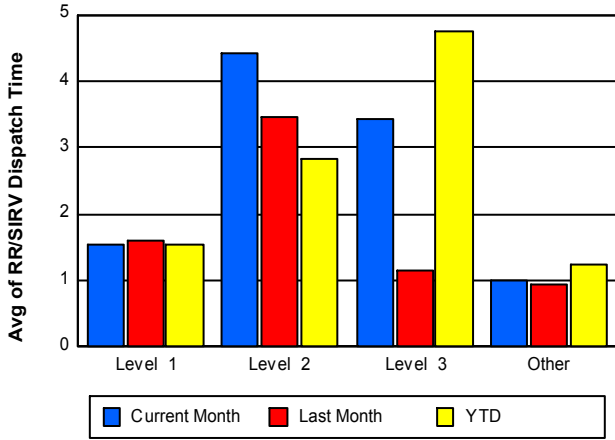
TMC Verification Time



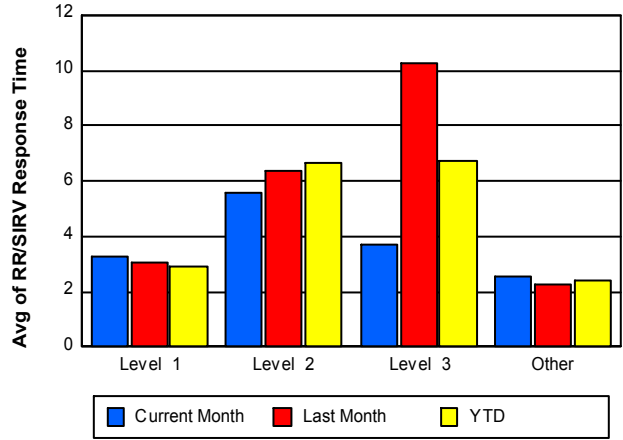
TMC Response Time



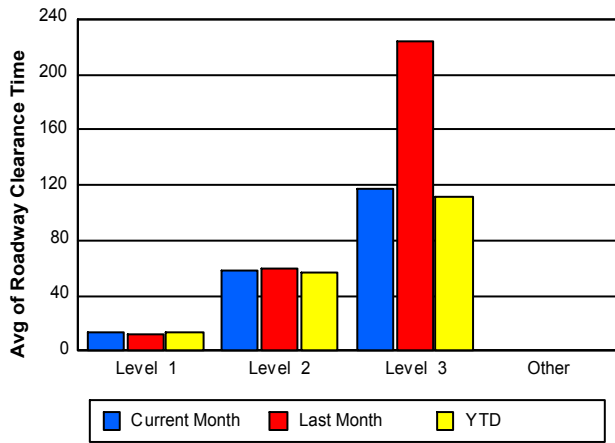
Road Ranger / SIRV Dispatch Time



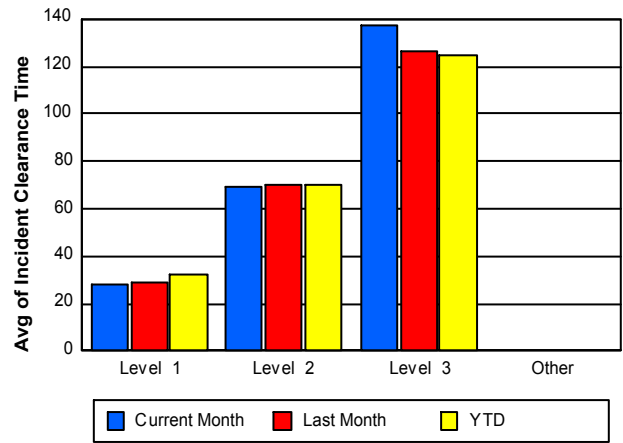
Road Ranger / SIRV Response Time



Roadway Clearance Time (2A)



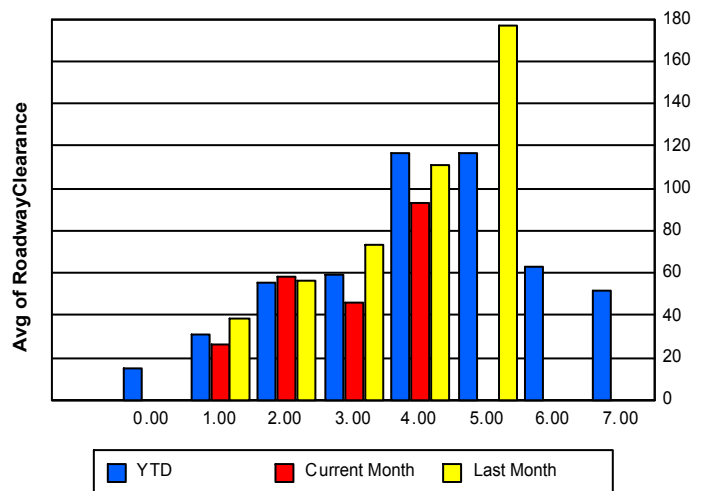
Incident Clearance Time (3B)



Roadway Clearance by Maximum Number of Lanes Blocked

	Current Month	Last Month	YTD
	0.00	0.00	
0			14.70
1	26.43	38.70	30.39
2	58.57	56.35	55.09
3	45.58	73.02	59.12
4	92.94	111.14	116.61
5	0.00	176.77	116.91
6	0.00	0.00	62.63

Roadway Clearance Time(2A)



	Current Month	Last Month	YTD
7	0.00	0.00	51.40

Performance Measures by Roadway

95

	<u>Current Month</u>	<u>Last Month</u>	<u>YTD</u>
Number of Events	2,723	2,566	18,951
Number of Incidents	111	114	1,108
TMC Detection (min.)	0.19	0.00	0.10
TMC Verification (min.)	3.09	2.74	2.94
TMC Response (min.)	3.65	3.37	3.80
RR Dispatch Time (min.)	1.07	1.01	1.32
RR Resp. Time (min.)	2.59	2.38	2.52
Event Clearance (min.)	42.99	40.56	46.91
Roadway Clear. (min.)	35.81	47.34	40.56
Incident Clearance (min.)	49.47	53.44	56.84
# of Events w/ RR/SIRV	2,626	2,481	18,184
RR/SIRV Responses	2,626	2,481	18,368
RR/SIRV Activities	2,841	2,708	20,088

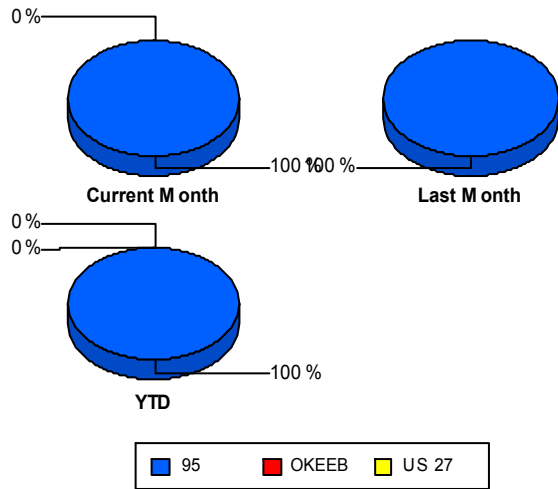
OKEEB

	<u>Current Month</u>	<u>YTD</u>
Number of Events	1	2
Number of Incidents	1	2
TMC Detection (min.)	0.00	0.00
TMC Verification (min.)	24.95	12.48
TMC Response (min.)		7.78
RR Dispatch Time (min.)	3.70	4.42
RR Resp. Time (min.)		2.63
Event Clearance (min.)	76.95	54.35
Roadway Clear. (min.)	68.67	50.14
Incident Clearance (min.)	76.95	54.35
# of Events w/ RR/SIRV	1	2
RR/SIRV Responses	1	2
RR/SIRV Activities	0	1

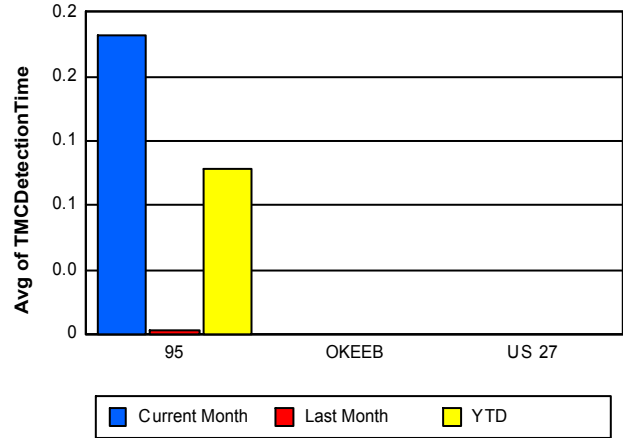
US 27

	<u>YTD</u>
Number of Events	1
Number of Incidents	0
TMC Detection (min.)	0.00
TMC Verification (min.)	
TMC Response (min.)	
RR Dispatch Time (min.)	
RR Resp. Time (min.)	
Event Clearance (min.)	125.57
Roadway Clear. (min.)	
Incident Clearance (min.)	
# of Events w/ RR/SIRV	0
RR/SIRV Responses	0
RR/SIRV Activities	0

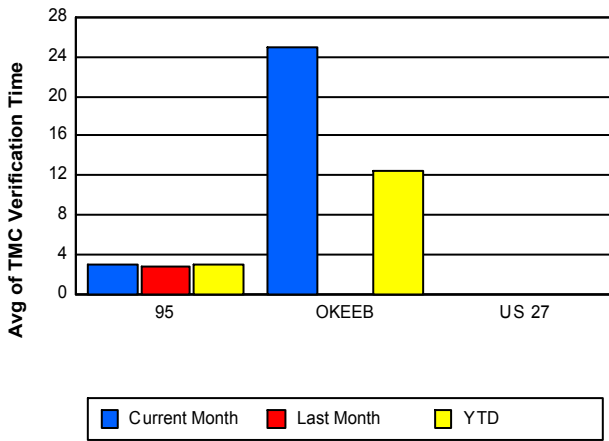
Number of Events / Roadway



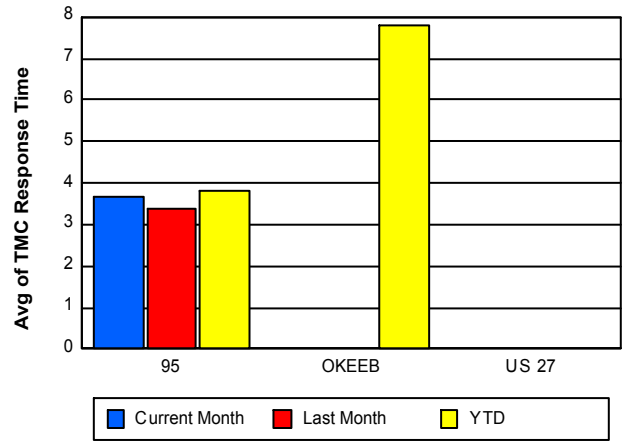
TMC Detection Time



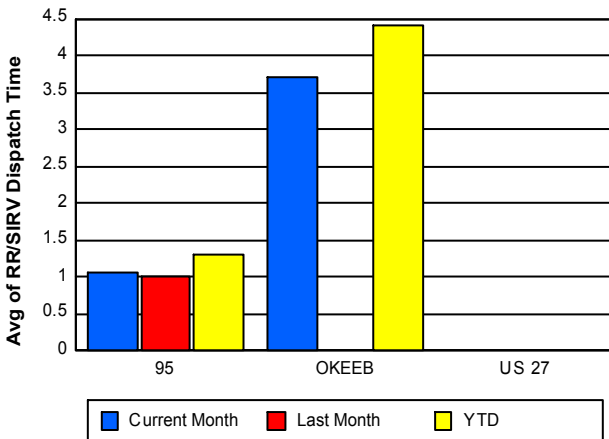
TMC Verification Time



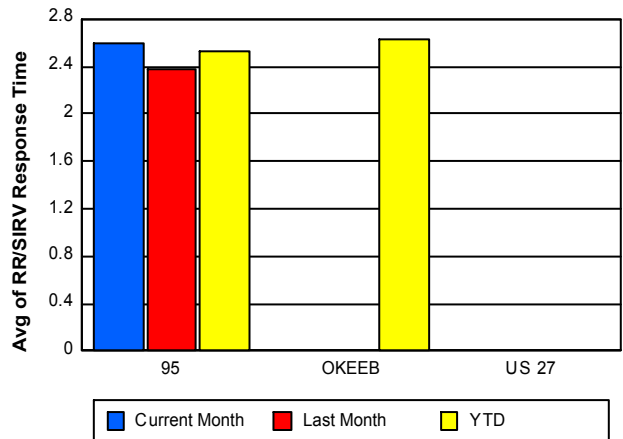
TMC Response Time



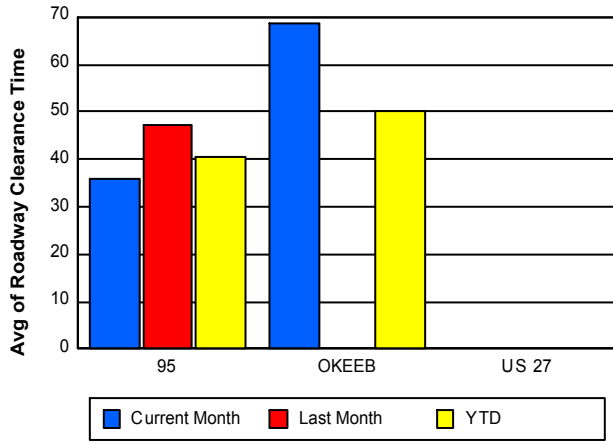
Road Ranger / SIRV Dispatch Time



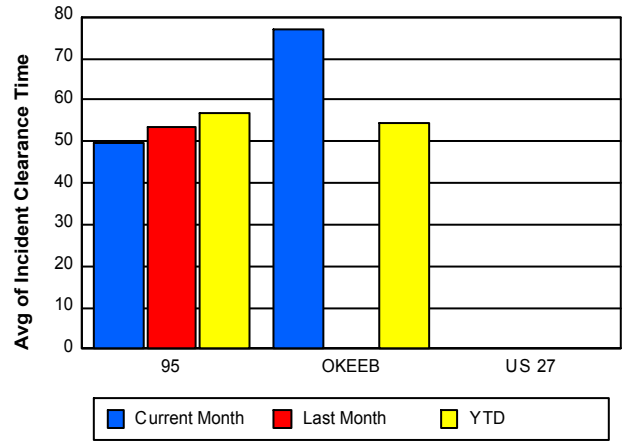
Road Ranger / SIRV Response Time



Roadway Clearance Time (2A)



Incident Clearance Time (3B)



Performance Measures by Event Type

Abandoned Vehicle

	<u>Current Month</u>	<u>Last Month</u>	<u>YTD</u>
Number of Events	495	459	3,344
Number of Incidents	4	1	13
TMC Detection (min.)	0.00	0.00	0.06
TMC Verification (min.)	0.70	0.34	0.57
TMC Response (min.)	1.51	0.82	2.09
RR Dispatch Time (min.)	0.43	0.60	1.51
RR Response Time (min.)	1.07	0.22	0.64
Event Clearance (min.)	152.61	145.43	169.73
Roadway Clearance (min.)	52.39	927.68	103.85
Incident Clearance (min.)	56.96	1.83	36.49
# of Events w/ RR/SIRV	419	393	2,819
RR/SIRV Assists	419	393	2,834
RR/SIRV Activities	431	406	2,931

Accident

	<u>Current Month</u>	<u>Last Month</u>	<u>YTD</u>
Number of Events	157	158	1,455
Number of Incidents	65	73	711
TMC Detection (min.)	0.07	0.02	0.16
TMC Verification (min.)	4.81	5.79	4.95
TMC Response (min.)	7.38	7.32	7.00
RR Dispatch Time (min.)	2.36	1.84	2.04
RR Response Time (min.)	5.00	5.56	5.07
Event Clearance (min.)	52.11	53.87	58.36
Roadway Clearance (min.)	43.43	48.30	47.02
Incident Clearance (min.)	62.24	65.42	69.20
# of Events w/ RR/SIRV	153	154	1,388
RR/SIRV Assists	153	154	1,467
RR/SIRV Activities	198	187	1,813

Congestion

	<u>Last Month</u>	<u>YTD</u>
Number of Events	1	26
Number of Incidents	0	0
TMC Detection (min.)	0.00	0.01
TMC Verification (min.)	0.00	0.31
TMC Response (min.)	25.45	15.93
RR Dispatch Time (min.)	11.07	4.22
RR Response Time (min.)	14.38	11.89
Event Clearance (min.)	27.70	38.52
Roadway Clearance (min.)		
Incident Clearance (min.)		
# of Events w/ RR/SIRV	1	6
RR/SIRV Assists	1	6
RR/SIRV Activities	1	6

Debris on Roadway

	<u>Current Month</u>	<u>Last Month</u>	<u>YTD</u>
Number of Events	138	170	961
Number of Incidents	14	12	94
TMC Detection (min.)	0.00	0.01	0.10
TMC Verification (min.)	5.68	4.84	6.28
TMC Response (min.)	5.72	5.76	6.78
RR Dispatch Time (min.)	1.16	1.19	1.52
RR Response Time (min.)	4.57	4.57	5.26
Event Clearance (min.)	11.02	10.04	11.83
Roadway Clearance (min.)	24.58	13.01	16.67
Incident Clearance (min.)	25.79	14.91	20.29
# of Events w/ RR/SIRV	138	170	950
RR/SIRV Assists	138	170	961
RR/SIRV Activities	145	181	1,034

Disabled Vehicle

	<u>Current Month</u>	<u>Last Month</u>	<u>YTD</u>
Number of Events	1,898	1,735	12,838
Number of Incidents	25	23	229
TMC Detection (min.)	0.26	0.00	0.11
TMC Verification (min.)	3.41	2.84	3.02
TMC Response (min.)	3.65	3.20	3.48
RR Dispatch Time (min.)	1.11	0.96	1.14
RR Response Time (min.)	2.56	2.27	2.37
Event Clearance (min.)	16.47	15.05	16.05
Roadway Clearance (min.)	21.02	25.70	24.75
Incident Clearance (min.)	29.59	37.34	33.46
# of Events w/ RR/SIRV	1,882	1,725	12,724
RR/SIRV Assists	1,882	1,725	12,791
RR/SIRV Activities	2,033	1,892	13,967

Emergency Vehicles

	<u>YTD</u>
Number of Events	5
Number of Incidents	3
TMC Detection (min.)	4.01
TMC Verification (min.)	4.48
TMC Response (min.)	0.51
RR Dispatch Time (min.)	0.24
RR Response Time (min.)	0.27
Event Clearance (min.)	29.42
Roadway Clearance (min.)	29.66
Incident Clearance (min.)	38.21
# of Events w/ RR/SIRV	5
RR/SIRV Assists	5
RR/SIRV Activities	5

Other

	<u>Current Month</u>	<u>Last Month</u>	<u>YTD</u>
Number of Events	9	23	147
Number of Incidents	0	0	7
TMC Detection (min.)	0.01	0.00	0.05
TMC Verification (min.)	5.48	5.92	9.76
TMC Response (min.)	12.70	14.80	14.92
RR Dispatch Time (min.)	1.15	5.31	3.99
RR Response Time (min.)	11.50	9.26	10.73
Event Clearance (min.)	17.41	19.49	27.65
Roadway Clearance (min.)			17.35
Incident Clearance (min.)			21.04
# of Events w/ RR/SIRV	8	18	128
RR/SIRV Assists	8	18	130
RR/SIRV Activities	7	20	140

Pedestrian

	<u>YTD</u>
Number of Events	32
Number of Incidents	0
TMC Detection (min.)	0.04
TMC Verification (min.)	1.39
TMC Response (min.)	1.38
RR Dispatch Time (min.)	0.27
RR Response Time (min.)	1.11
Event Clearance (min.)	15.13
Roadway Clearance (min.)	
Incident Clearance (min.)	
# of Events w/ RR/SIRV	32
RR/SIRV Assists	32
RR/SIRV Activities	33

Police Activity

	<u>Current Month</u>	<u>Last Month</u>	<u>YTD</u>
Number of Events	3	1	46
Number of Incidents	2	1	36
TMC Detection (min.)	0.00	0.00	0.26
TMC Verification (min.)	8.32	0.00	2.10
TMC Response (min.)	17.33	19.35	9.96
RR Dispatch Time (min.)	3.54	5.62	5.57
RR Response Time (min.)	12.25	13.73	4.23
Event Clearance (min.)	52.92	88.35	55.33
Roadway Clearance (min.)	40.56	65.55	47.36
Incident Clearance (min.)	53.93	88.35	66.22
# of Events w/ RR/SIRV	3	1	37
RR/SIRV Assists	3	1	43
RR/SIRV Activities	1	2	49

Vehicle Fire

	<u>Current Month</u>	<u>Last Month</u>	<u>YTD</u>
Number of Events	3	6	15
Number of Incidents	2	4	8
TMC Detection (min.)	0.00	0.00	0.00
TMC Verification (min.)	0.82	4.78	4.12
TMC Response (min.)	2.06	7.10	5.67
RR Dispatch Time (min.)	1.66	2.84	1.91
RR Response Time (min.)	0.40	4.27	3.76
Event Clearance (min.)	34.83	45.97	596.77
Roadway Clearance (min.)	29.91	32.49	34.77
Incident Clearance (min.)	43.11	47.24	48.08
# of Events w/ RR/SIRV	3	6	14
RR/SIRV Assists	3	6	14
RR/SIRV Activities	5	6	16

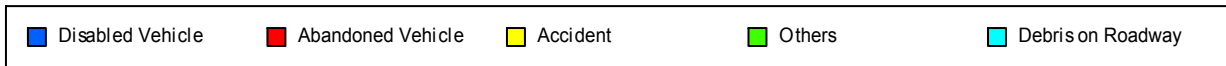
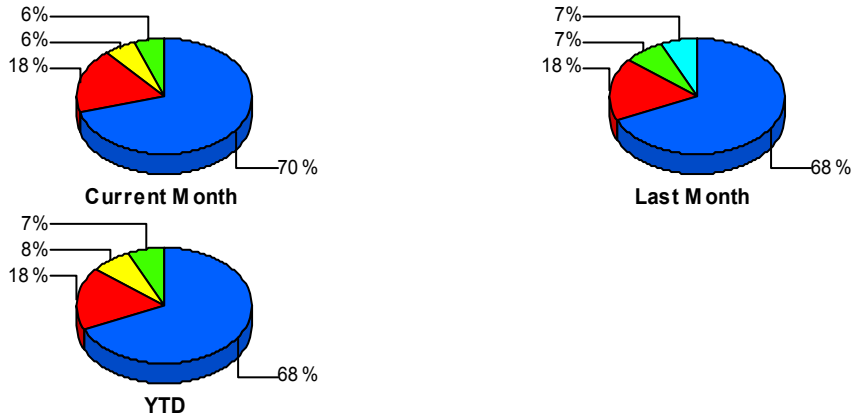
Visibility

	<u>YTD</u>
Number of Events	6
Number of Incidents	5
TMC Detection (min.)	0.00
TMC Verification (min.)	1.47
TMC Response (min.)	17.63
RR Dispatch Time (min.)	7.16
RR Response Time (min.)	10.47
Event Clearance (min.)	38.20
Roadway Clearance (min.)	29.89
Incident Clearance (min.)	35.95
# of Events w/ RR/SIRV	5
RR/SIRV Assists	5
RR/SIRV Activities	7

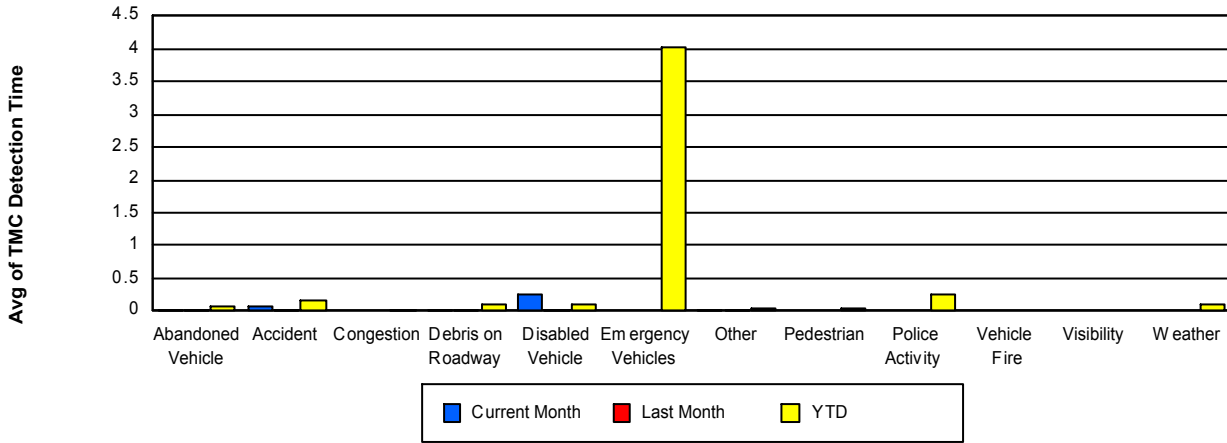
Weather

	<u>YTD</u>
Number of Events	6
Number of Incidents	4
TMC Detection (min.)	0.11
TMC Verification (min.)	9.74
TMC Response (min.)	12.32
RR Dispatch Time (min.)	3.52
RR Response Time (min.)	8.80
Event Clearance (min.)	137.06
Roadway Clearance (min.)	170.23
Incident Clearance (min.)	159.05
# of Events w/ RR/SIRV	5
RR/SIRV Assists	9
RR/SIRV Activities	11

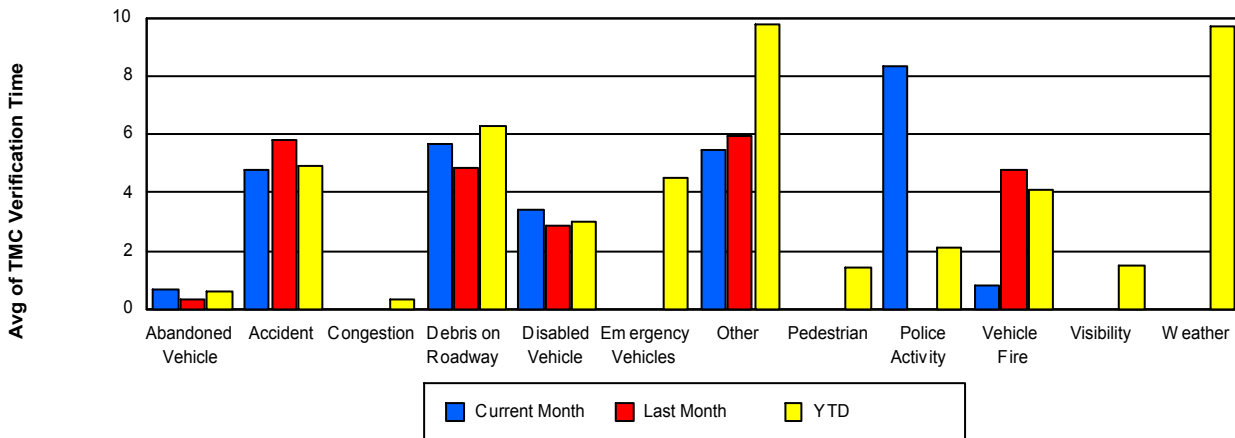
Number of Events / Event Type



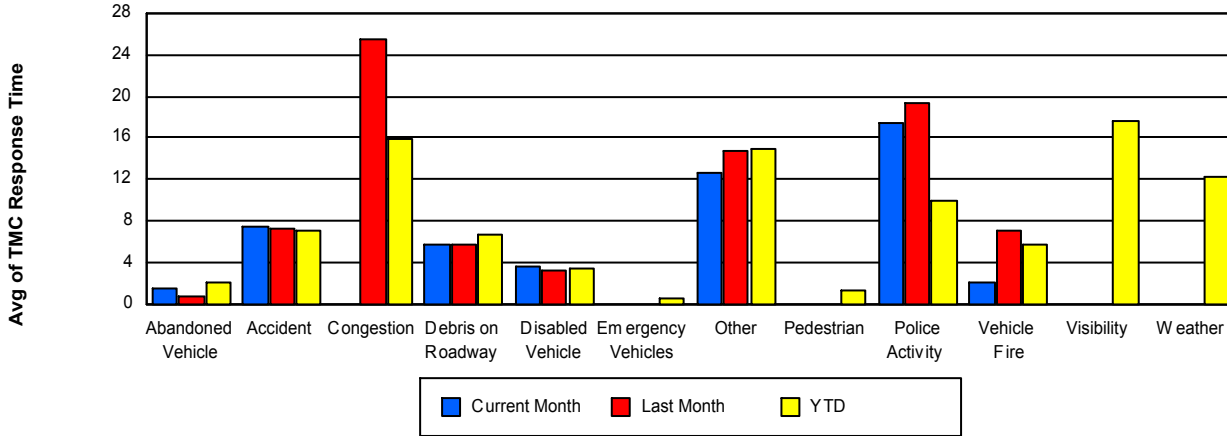
TMC Detection Time



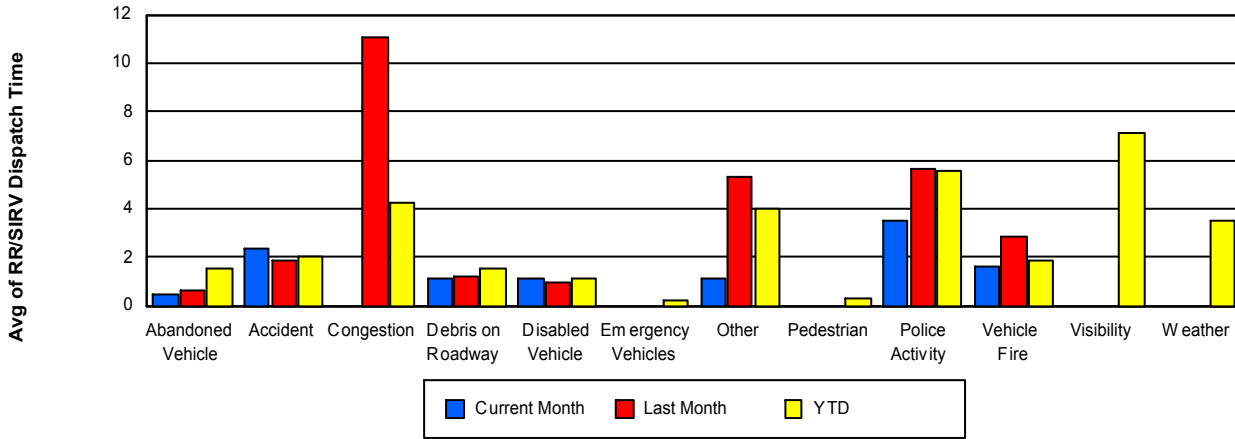
TMC Verification Time



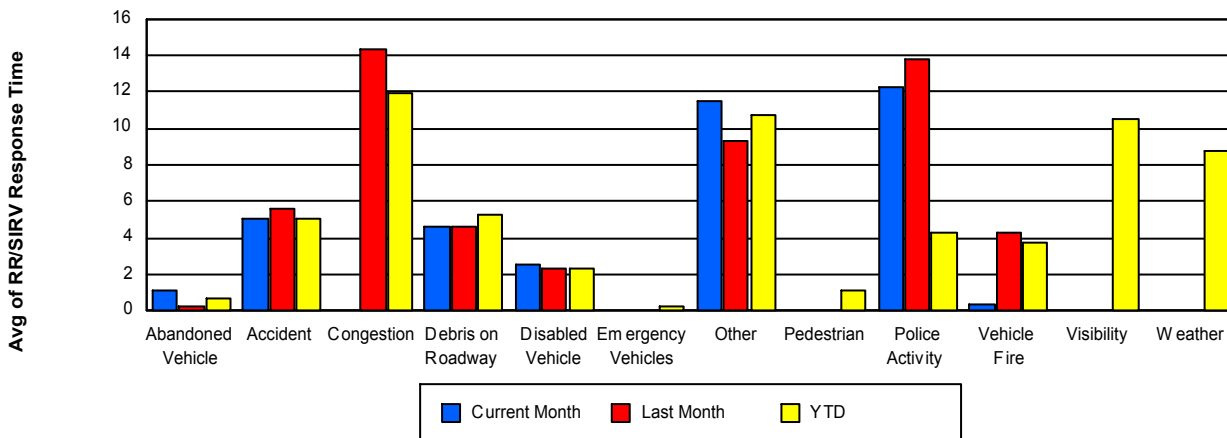
TMC Response Time



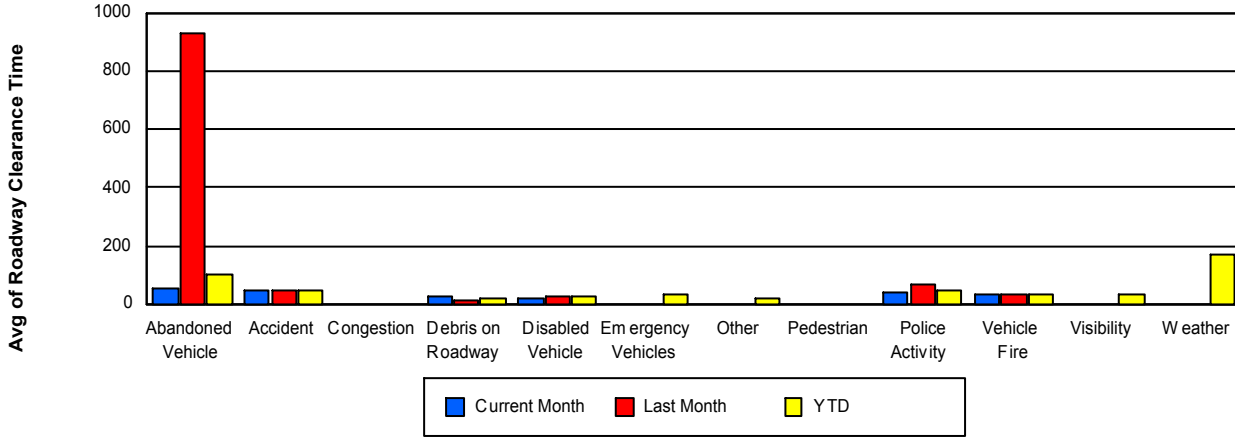
Road Ranger / SIRV Dispatch Time



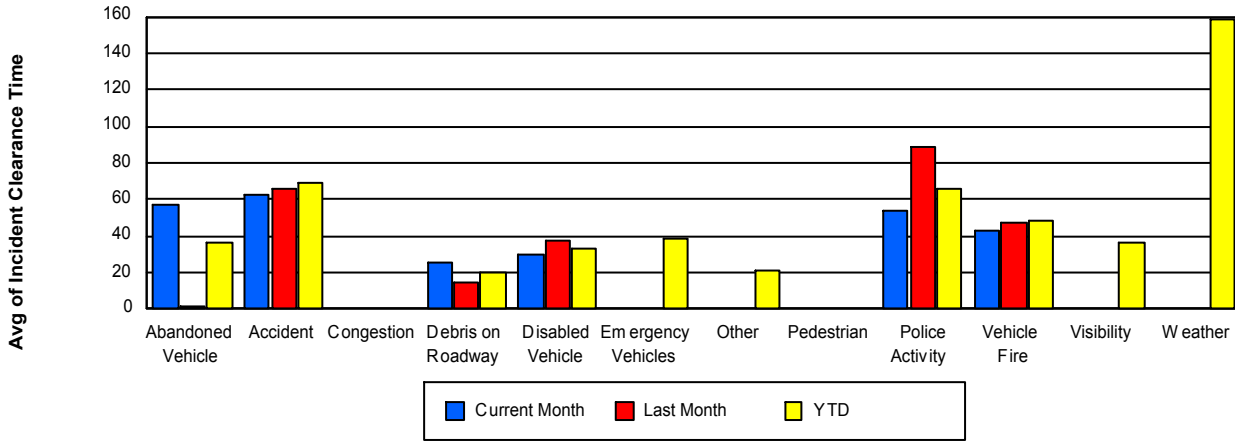
Road Ranger / SIRV Response Time



Roadway Clearance Time (2A)



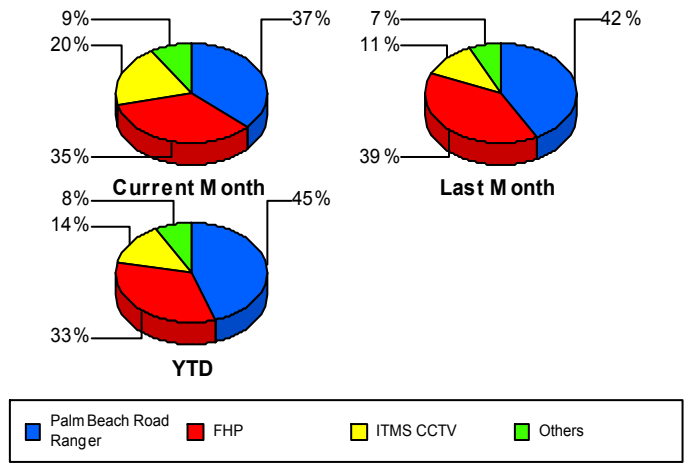
Incident Clearance Time (3B)



Incident Detection Methods

	Current Month	Last Month	YTD
Broward CCTV	1	0	1
Broward Road Ranger	2	0	8
Broward TMC	0	0	1
Construction CEI	0	0	6
District 4	3	2	45
FDOT Maintenance	0	1	1
FHP	39	45	370
ITMS	1	1	5
ITMS CCTV	22	13	156
Motorist	3	4	16
Palm Beach Road Rang	41	48	496
Road Watcher	0	0	2
SmarTraveler (511)	0	0	3
Total	112	114	1,110

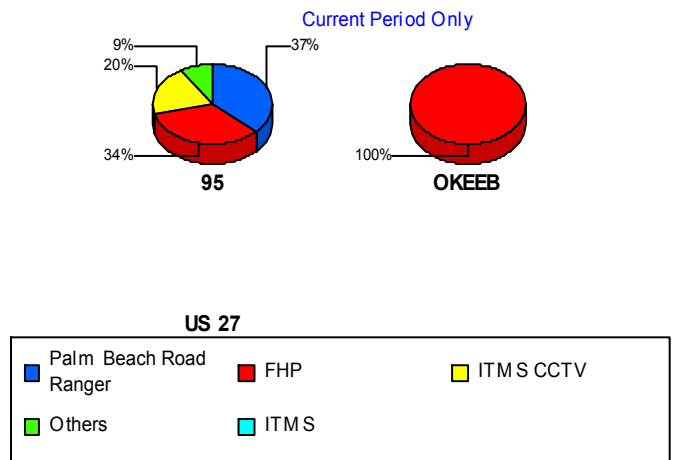
Total Incidents by Detection Method



Incident Detection Methods by Roadway

		Current Month	Last Month	YTD
95	Broward CCTV	1	0	1
	Broward Road Ranger	2	0	8
	Broward TMC	0	0	1
	Construction CEI	0	0	6
	District 4	3	2	45
	FDOT Maintenance	0	1	1
	FHP	38	45	368
	ITMS	1	1	5
	ITMS CCTV	22	13	156
	Motorist	3	4	16
	Palm Beach Road Rang	41	48	496
	Road Watcher	0	0	2
	SmarTraveler (511)	0	0	3

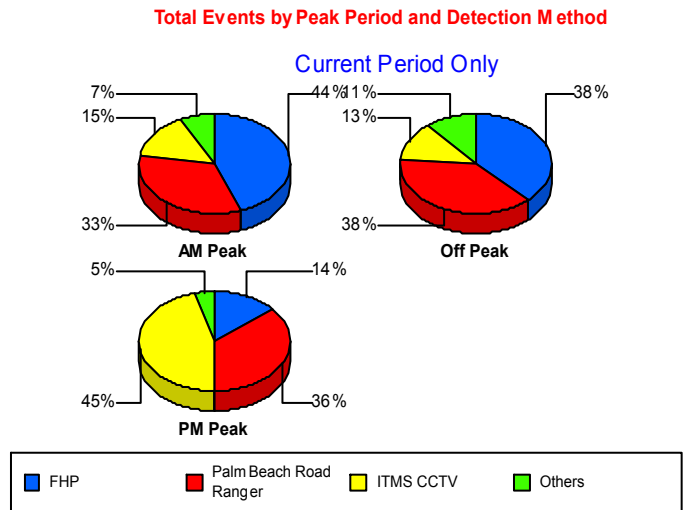
Total Events by Roadway and Detection Method



		Current Month	Last Month	YTD
95	Total	111	114	1,108
OKEEB	FHP	1	0	2
	Total	1	0	2
Total		112	114	1,110

Incident Detection Methods by Peak Period

		Current Month	Last Month	YTD
AM Peak	Broward Road Ranger	1	0	3
	Broward TMC	0	0	1
	Construction CEI	0	0	1
	District 4	1	2	19
	FHP	12	12	89
	ITMS	0	0	1
	ITMS CCTV	4	1	38
	Motorist	0	1	4
	Palm Beach Road Rang	9	13	123
	SmarTraveler (511)	0	0	1
	Total	27	29	280
	Off Peak	Broward CCTV	1	0
Broward Road Ranger		1	0	2
Construction CEI		0	0	5
District 4		2	0	21
FDOT Maintenance		0	1	1
FHP		24	26	217
ITMS		0	1	1
ITMS CCTV		8	10	74
Motorist		3	3	10
Palm Beach Road Rang		24	25	264
Road Watcher		0	0	2
SmarTraveler (511)		0	0	1
Total		63	66	599
PM Peak	Broward Road Ranger	0	0	3

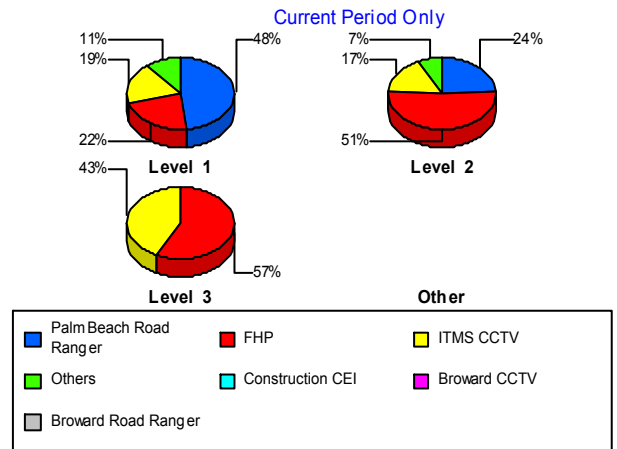


		Current Month	Last Month	YTD
PM Peak	District 4	0	0	5
	FHP	3	7	64
	ITMS	1	0	3
	ITMS CCTV	10	2	44
	Motorist	0	0	2
	Palm Beach Road Rang	8	10	109
	SmarTraveler (511)	0	0	1
	Total	22	19	231
Total		112	114	1,110

Incident Detection Methods by Severity

		Current Month	Last Month	YTD
Level 1	Broward CCTV	1	0	1
	Broward Road Ranger	2	0	7
	Broward TMC	0	0	1
	Construction CEI	0	0	2
	District 4	1	0	31
	FHP	14	16	136
	ITMS	1	1	2
	ITMS CCTV	12	8	79
	Motorist	2	1	7
	Palm Beach Road Rang	31	31	303
	SmarTraveler (511)	0	0	2
	Total	64	57	571
Level 2	Broward Road Ranger	0	0	1
	Construction CEI	0	0	2
	District 4	2	2	12
	FHP	21	25	180
	ITMS	0	0	3
	ITMS CCTV	7	4	51
	Motorist	1	3	9
Palm Beach Road Rang	10	15	151	

Total Events by Severity and Detection Method



		Current Month	Last Month	YTD
Level 2	Road Watcher	0	0	1
	SmarTraveler (511)	0	0	1
	Total	41	49	411
Level 3	Construction CEI	0	0	2
	District 4	0	0	2
	FDOT Maintenance	0	1	1
	FHP	4	4	54
	ITMS CCTV	3	1	26
	Palm Beach Road Rang	0	2	42
	Road Watcher	0	0	1
	Total	7	8	128
Total		112	114	1,110

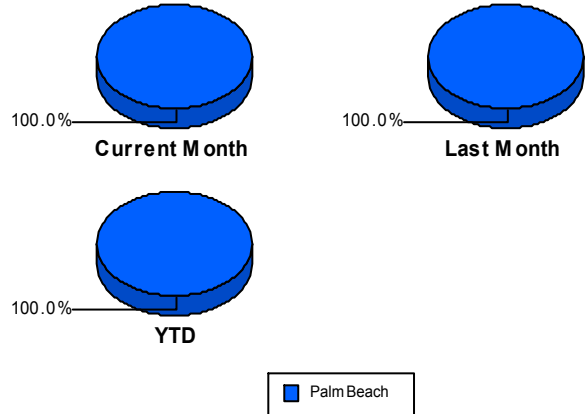
Road Ranger / SIRV Performance Measures

Road Ranger / SIRV Performance By County

RR/SIRV Responses per County

Values presented are:
 - Total Events with a RR/SIRV Response
 - Total RR/SIRV Responses,
 - Total Activities Performed

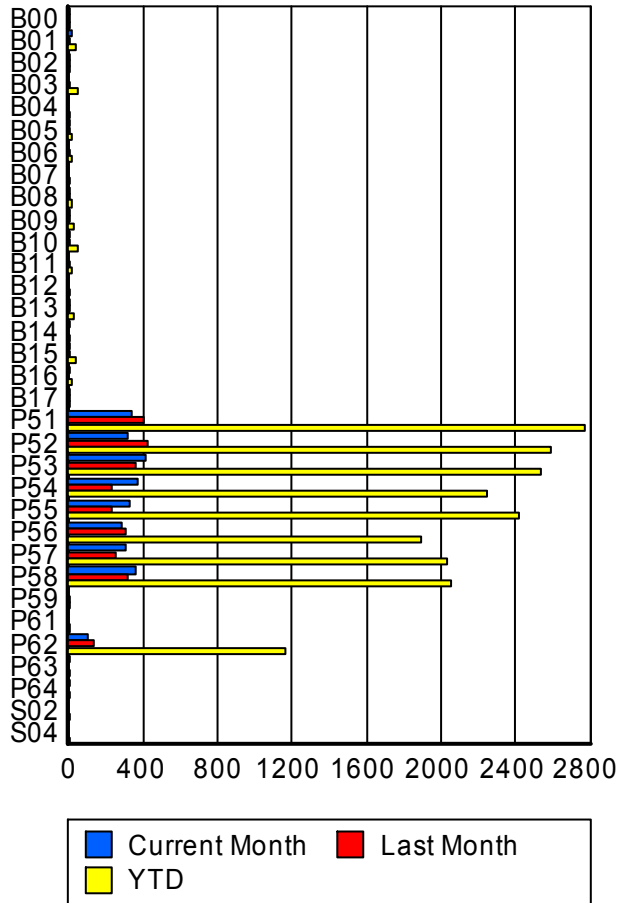
	Current Mo	Last Month	YTD
Palm Beach	2,794	2,631	19,324
	2,891	2,711	20,073
	3,049	2,898	21,441



Road Ranger / SIRV Performance By Truck

	Current Mo	Last Month	YTD
B00	1	2	9
	1	2	9
	1	2	10
B01	15	2	36
	15	2	36
	15	2	39
B02	6	1	9
	6	1	9
	6	1	9
B03	0	4	43
	0	4	45
	0	5	47
B04	0	0	1
	0	0	1
	0	0	1
B05	4	4	15
	4	4	15
	5	4	16
B06	0	2	13
	0	2	13
	0	2	14
B07	0	0	4
	0	0	4
	0	0	4
B08	3	3	18
	3	3	19
	3	3	19

**RR/SIRV
Responses per
Truck**



	Current Mo	Last Month	YTD
B09	1	10	25
	1	10	26
	1	10	27
B10	7	4	47
	7	4	47
	7	5	55
B11	0	1	18
	0	1	18
	0	1	19
B12	0	0	6
	0	0	6
	0	0	6
B13	8	2	26
	8	2	26
	8	2	26
B14	3	0	7
	3	0	7
	3	0	8
B15	3	8	32
	3	9	33
	3	9	35
B16	1	0	12
	1	0	12
	1	0	13
B17	3	2	7
	3	2	7
	3	2	7
P51	338	404	2,757
	340	406	2,774
	364	428	2,960
P52	317	422	2,563
	321	428	2,587
	343	462	2,787
P53	410	357	2,521
	414	359	2,539
	432	388	2,701
P54	368	230	2,230
	373	232	2,250
	398	243	2,406
P55	330	232	2,398
	332	232	2,413
	347	253	2,577
P56	281	302	1,876
	284	302	1,891
	297	320	2,021

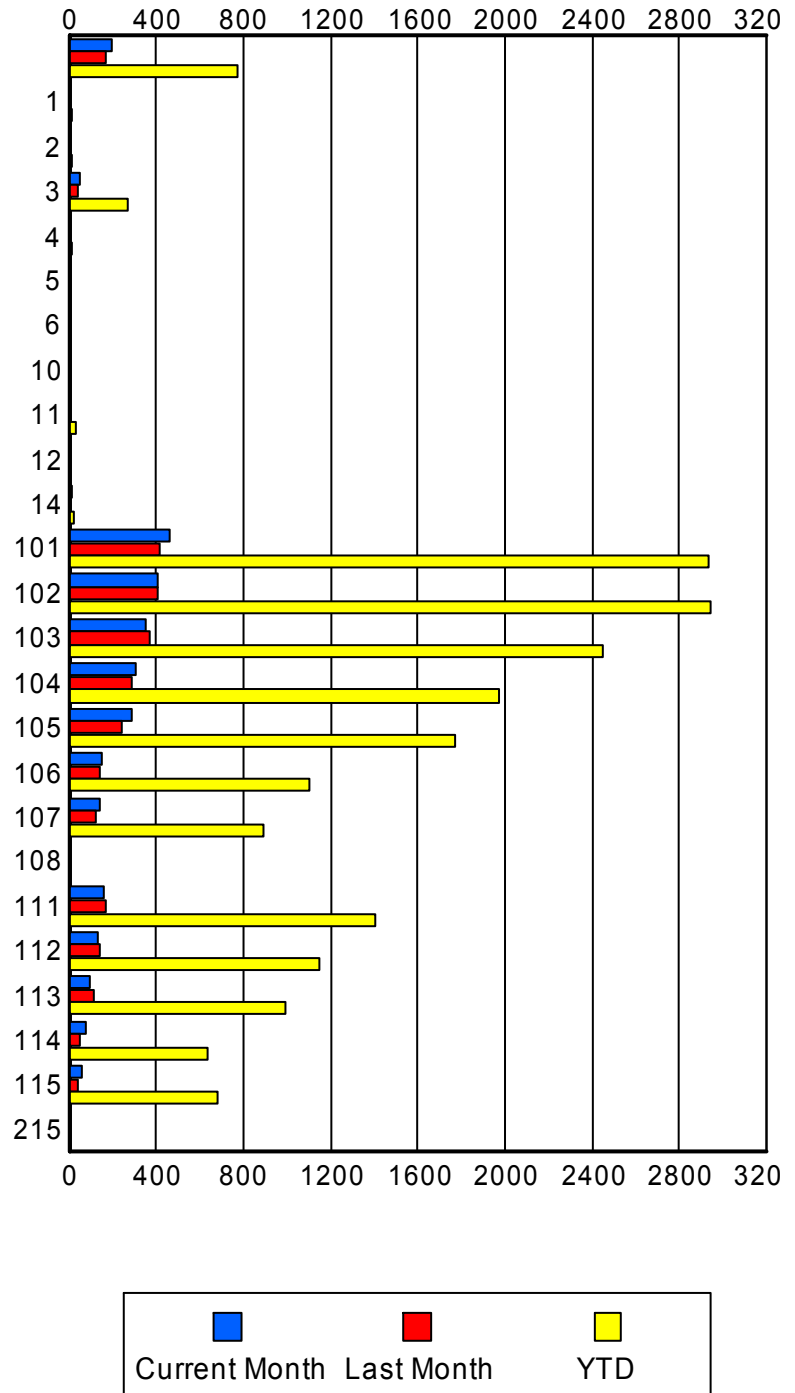
	Current Mo	Last Month	YTD
P57	310	253	2,018
	310	254	2,035
	329	280	2,193
P58	349	319	2,037
	357	320	2,058
	373	334	2,178
P59	0	1	7
	0	1	7
	0	1	7
P61	0	0	7
	0	0	7
	0	0	7
P62	101	129	1,156
	102	131	1,168
	107	141	1,238
P63	2	0	4
	2	0	4
	2	0	4
P64	1	0	3
	1	0	3
	1	0	3
S02	0	0	3
	0	0	3
	0	0	3
S04	0	0	1
	0	0	1
	0	0	1

Road Ranger / SIRV Performance By Beat

	Current Mo	Last Month	YTD
	195	168	765
	198	169	772
	214	177	818
1	2	2	12
	2	2	12
	2	2	13
2	1	1	9
	1	1	9
	1	1	9
3	44	35	265
	45	36	272
	46	38	290
4	0	0	8
	0	0	8
	0	0	10
5	0	0	1
	0	0	1
	0	0	1
6	0	0	2
	0	0	2
	0	0	2
10	0	1	3
	0	1	3
	0	1	3
11	6	5	34
	6	5	35
	6	5	37
12	0	0	2
	0	0	2
	0	0	2
14	15	2	18
	16	2	19
	17	2	21
101	457	416	2,915
	459	419	2,936
	480	445	3,115
102	398	407	2,926
	407	408	2,947
	432	436	3,179
103	353	373	2,434
	355	374	2,453
	379	410	2,631
104	306	282	1,951
	308	284	1,969
	329	303	2,131

Values presented are:
 - Total Events with a RR/SIRV Response
 - Total RR/SIRV Responses,
 - Total Activities Performed

RR/SIRV Responses per Beat



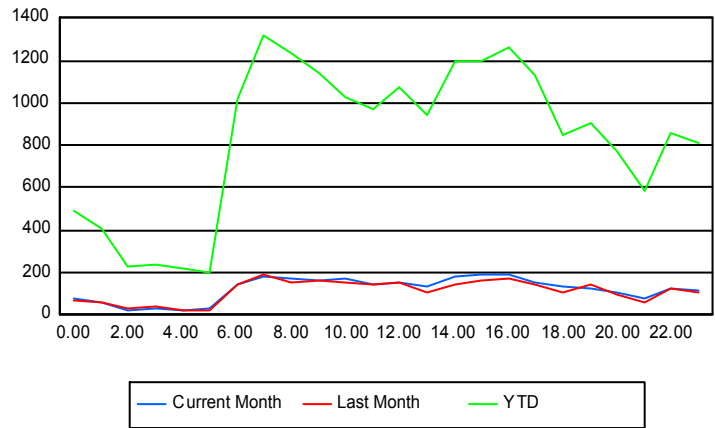
	Current Mo	Last Month	YTD
105	281	239	1,748
	283	240	1,768
	292	260	1,871
106	143	145	1,093
	147	145	1,103
	154	156	1,171
107	138	120	882
	139	121	890
	147	127	935
108	0	0	1
	0	0	1
	0	0	1
111	159	163	1,396
	160	164	1,408
	167	174	1,500
112	133	134	1,142
	134	136	1,152
	141	144	1,227
113	96	114	972
	98	114	989
	101	117	1,056
114	72	49	634
	73	49	639
	75	55	675
115	59	39	674
	60	41	681
	66	45	741
215	0	0	2
	0	0	2
	0	0	2

Road Ranger / SIRV Performance By Time of Day

Values presented are:
 - Total Events with a RR/SIRV Response
 - Total RR/SIRV Responses,
 - Total Activities Performed

	Current Mo	Last Month	YTD
12AM-1AM	72	62	471
	75	65	492
	78	69	523
1AM-2AM	56	52	388
	56	55	410
	56	60	450
2AM-3AM	22	30	219
	22	32	231
	22	33	242
3AM-4AM	25	38	221
	26	42	235
	26	47	256
4AM-5AM	24	19	200
	25	20	222
	29	21	242
5AM-6AM	23	22	177
	26	25	204
	28	25	221
6AM-7AM	136	145	985
	139	147	1,017
	145	159	1,088
7AM-8AM	174	184	1,282
	180	188	1,318
	193	200	1,401
8AM-9AM	167	149	1,185
	175	151	1,232
	184	161	1,312
9AM-10AM	159	158	1,100
	163	163	1,142
	176	177	1,237
10AM-11AM	169	151	994
	176	155	1,026
	179	170	1,104
11AM-12PM	142	138	933
	145	145	970
	155	155	1,035
12PM-1PM	145	152	1,028
	150	157	1,077
	156	167	1,154

Number of Responses / Hour of the Day



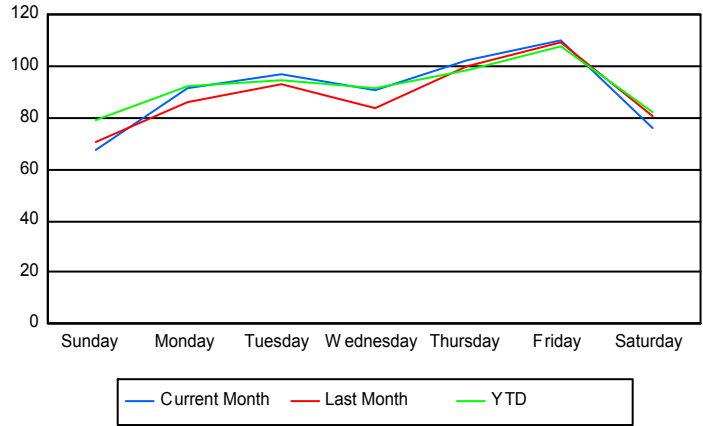
	Current Mo	Last Month	YTD
1PM-2PM	126	106	898
	137	110	945
	147	121	1,026
2PM-3PM	178	147	1,168
	181	147	1,195
	194	159	1,285
3PM-4PM	191	159	1,166
	193	162	1,193
	200	167	1,251
4PM-5PM	183	168	1,229
	187	171	1,262
	199	191	1,355
5PM-6PM	155	143	1,092
	157	147	1,127
	166	151	1,193
6PM-7PM	131	106	817
	134	109	847
	138	115	891
7PM-8PM	119	133	876
	123	142	905
	128	147	953
8PM-9PM	101	91	750
	106	92	778
	111	100	823
9PM-10PM	70	59	549
	76	59	581
	86	61	612
10PM-11PM	115	118	821
	121	121	854
	131	129	912
11PM-12AM	111	101	775
	118	106	810
	122	113	875

Road Ranger / SIRV Performance By Day of Week

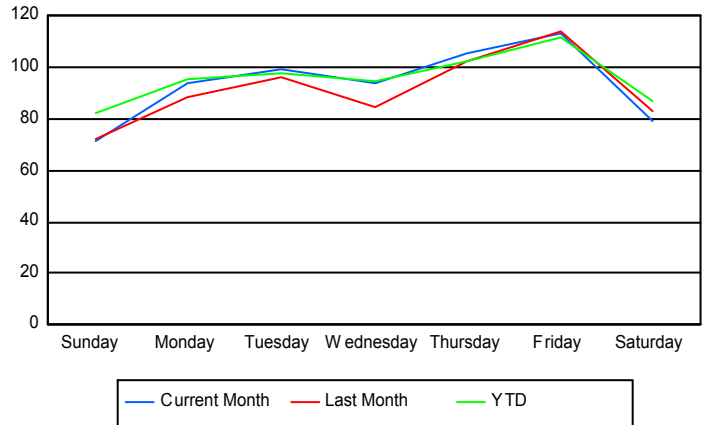
Values presented are:
 - Total Events with a RR/SIRV Response
 - Total RR/SIRV Responses,
 - Total Activities Performed

	Current Mo	Last Month	YTD
Sunday	271	350	2,306
	285	359	2,403
	311	388	2,583
Monday	361	430	2,732
	371	441	2,813
	379	471	2,977
Tuesday	480	371	2,887
	492	384	2,991
	513	405	3,163
Wednesday	447	328	2,779
	462	334	2,865
	479	349	3,059
Thursday	506	400	3,019
	522	408	3,124
	554	445	3,344
Friday	432	434	3,197
	446	454	3,321
	477	486	3,591
Saturday	302	322	2,434
	313	331	2,556
	336	354	2,724

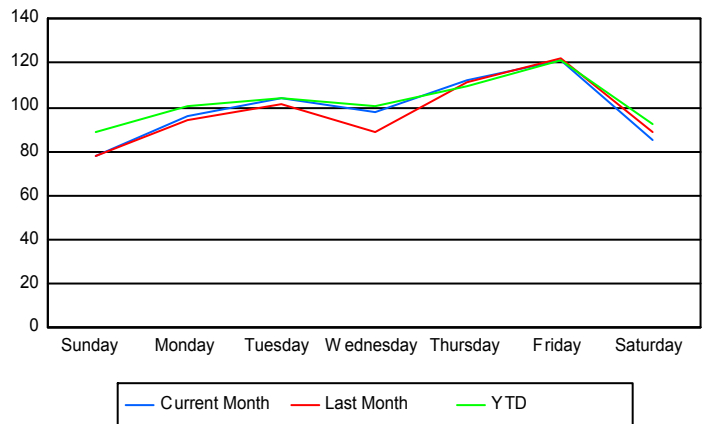
Avg # of events with a RR/SIRV Response per Day of the Week



Avg # of RR/SIRV Responses per Day of the Week



Avg # of RR/SIRV Activities Performed per Day of the Week



Road Ranger/ SIRV Responses per Time of Day and Day of Week

