



Monthly Performance Measures Report Palm Beach County



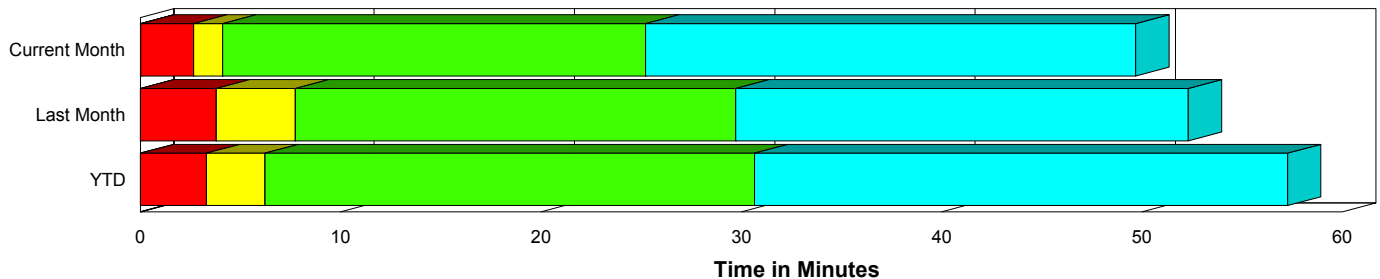
Created on:
May 04, 2009
11:52 am

Period From Mar 1, 2009 to Mar 31, 2009

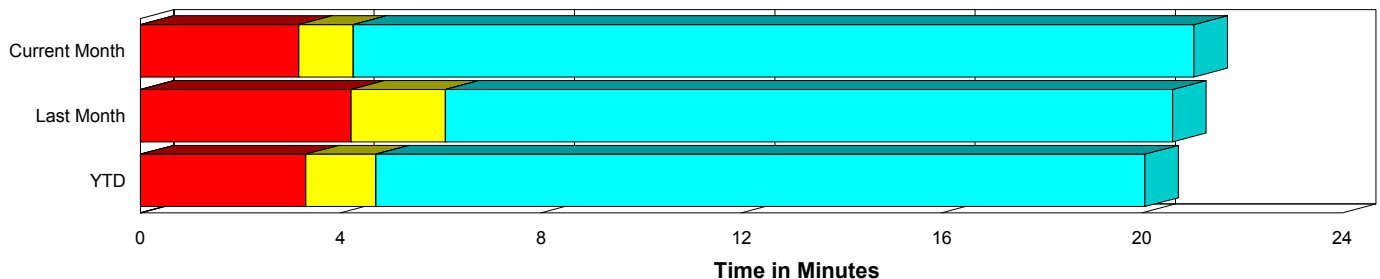
Performance Measures Summary

	Traffic Events (No Lanes Blocked)			Incidents (Lanes Blocked)		
	<u>This Month</u>	<u>Last Month</u>	<u>YTD</u>	<u>This Month</u>	<u>Last Month</u>	<u>YTD</u>
Number of Events	1,216	1,128	3,603	95	70	247
TMC Detection (min.)	0.00	0.00	0.00	0.02	0.00	0.01
TMC Verification (min.)	3.16	4.21	3.30	2.65	3.79	3.29
TMC Response (min.)	4.97	7.32	5.72	4.66	8.37	6.79
RR Dispatch Time (min.)	1.80	2.60	2.01	1.55	2.70	2.88
RR Response Time (min.)	3.21	4.74	3.76	3.12	5.67	3.90
Roadway Clearance (min.)				31.04	33.90	34.69
Event Clearance (min.)	21.76	21.84	21.07	55.03	56.43	61.08
# of Events w/ RR/SIRV	1,006	899	2,825	75	60	207
RR/SIRV Responses	1,006	899	2,825	75	60	207
RR/SIRV Activities	1,109	972	3,058	102	90	310

Incident Clearance Time-Line



Traffic Event (Non-Lane Blockage) Time-Line



■ Avg. TMC Detection Time	■ Avg. Time from TMC Response to Roadway Clearance*
■ Avg. Time from TMC Detection to TMC Verification	■ Avg. Time from Roadway Clearance to Incident/Event Clearance**
■ Avg. Time from TMC Verification to TMC Response	

* Roadway clearance equals all travel lanes open

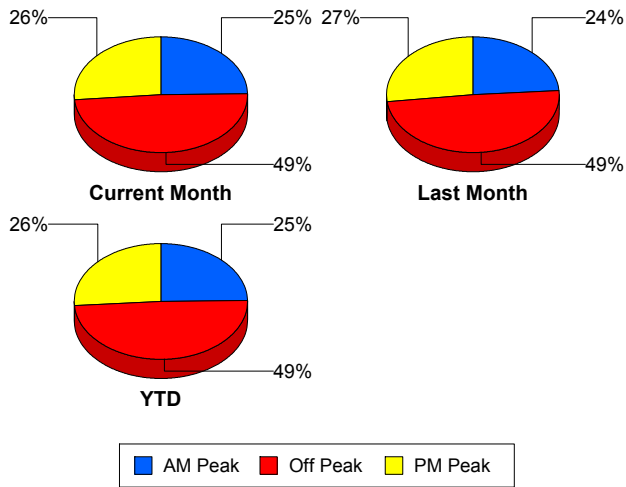
** Incident clearance equals time when last responder has left the scene

Performance Measures by Peak Period

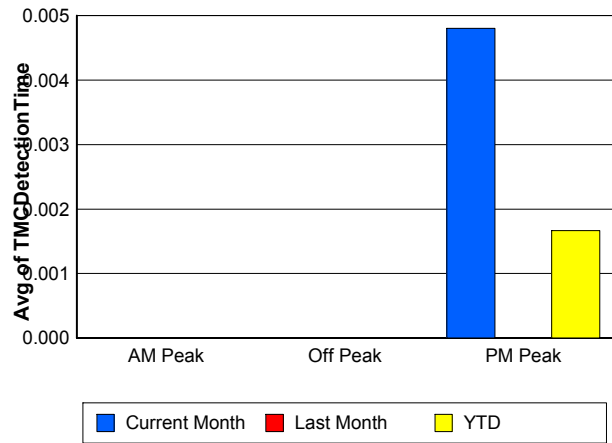
Note: AM peak period is defined as 6am to 10am and PM peak period is defined as 3pm to 7pm.

	AM Peak			Off Peak			PM Peak		
	<u>Current Month</u>	<u>Last Month</u>	<u>YTD</u>	<u>Current Month</u>	<u>Last Month</u>	<u>YTD</u>	<u>Current Month</u>	<u>Last Month</u>	<u>YTD</u>
Number of Events	323	287	951	641	588	1,898	347	323	1,001
Number of Incidents	26	18	67	40	31	107	29	21	73
TMC Detection (min.)	0.00	0.00	0.00	0.00	0.00	0.00	0.00	0.00	0.00
TMC Verification (min.)	2.88	3.35	2.97	2.49	4.00	2.78	4.54	5.26	4.62
TMC Response (min.)	3.81	4.85	4.19	5.35	10.34	7.12	5.46	6.12	5.64
RR Dispatch Time (min.)	1.28	0.98	1.09	2.43	4.35	3.23	1.36	1.95	1.52
RR Response Time (min.)	2.65	3.95	3.17	2.91	5.94	3.93	4.12	4.20	4.13
Event Clearance (min.)	22.19	20.78	21.06	27.43	28.36	26.69	19.98	18.41	20.30
Roadway Clearance (min.)	34.95	28.38	37.99	32.46	41.06	38.10	25.58	28.05	26.67
Incident Clearance (min.)	50.29	52.40	61.96	67.02	64.68	70.86	42.75	47.69	45.94
# of Events w/ RR/SIRV	304	278	898	453	374	1,205	324	307	929
RR/SIRV Responses	304	278	898	453	374	1,205	324	307	929
RR/SIRV Activities	350	319	1,036	503	418	1,330	358	325	1,002

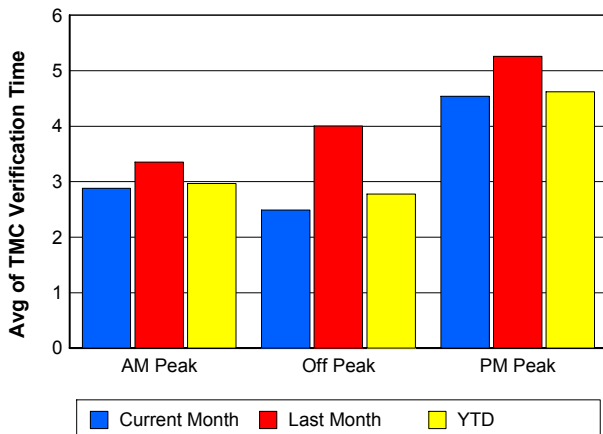
Number of Events / Peak Period



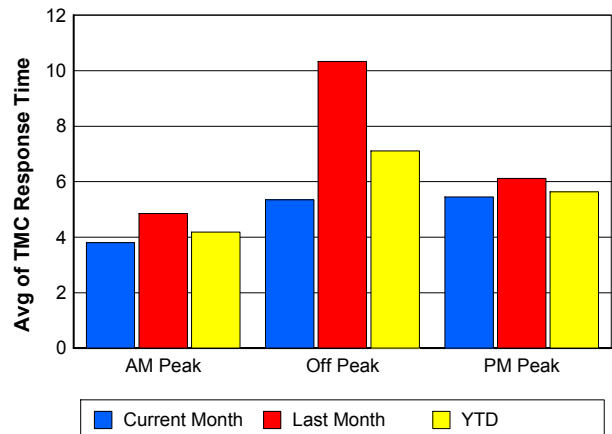
TMC Detection Time



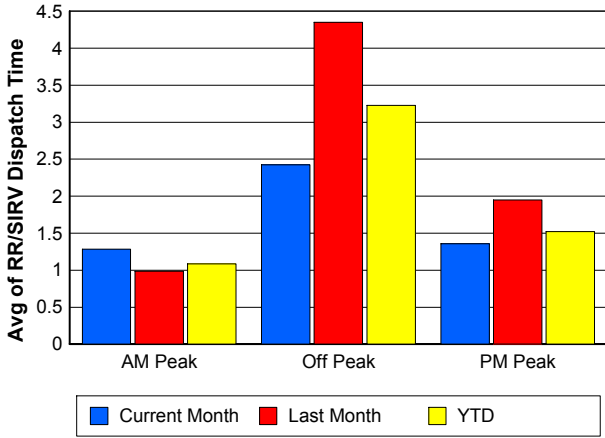
TMC Verification Time



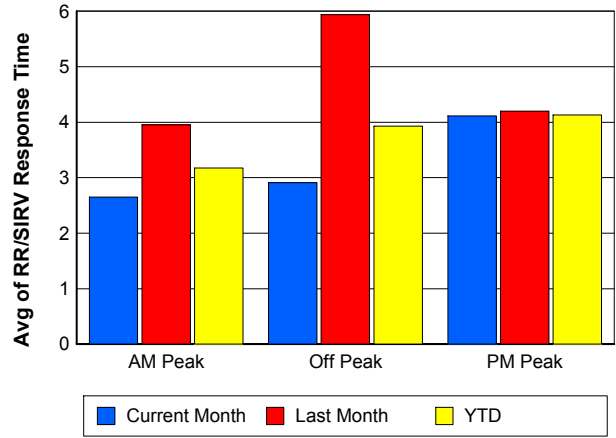
TMC Response Time



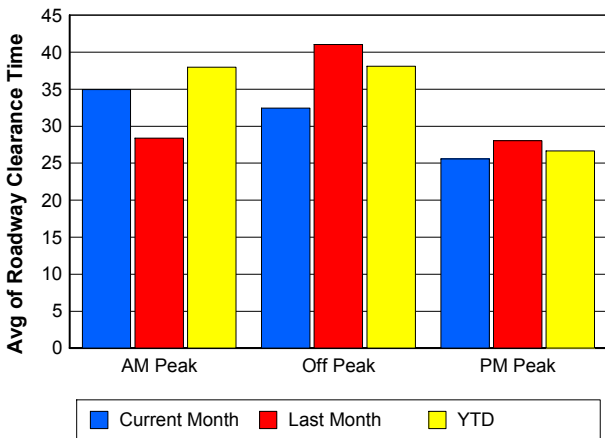
Road Ranger / SIRV Dispatch Time



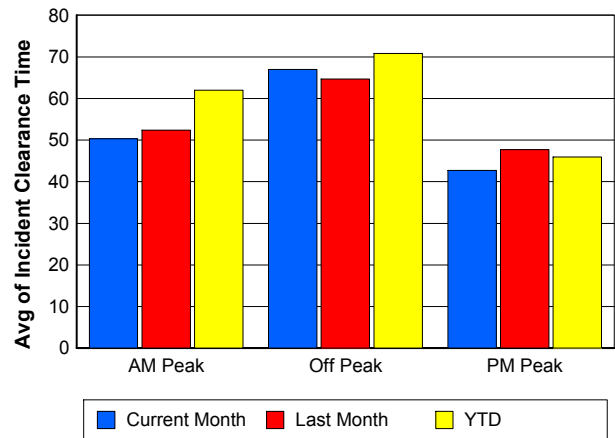
Road Ranger / SIRV Response Time



Roadway Clearance Time (2A)



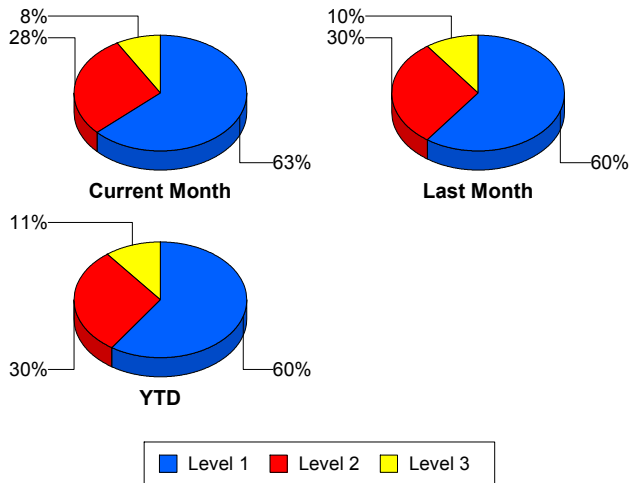
Incident Clearance Time (3B)



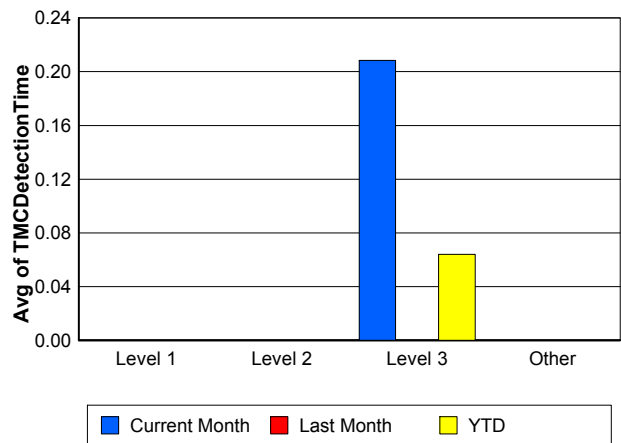
Performance Measures by Severity

	Level 1			Level 2			Level 3			Other		
	<u>This Month</u>	<u>Last Month</u>	<u>YTD</u>	<u>This Month</u>	<u>Last Month</u>	<u>YTD</u>	<u>This Month</u>	<u>Last Month</u>	<u>YTD</u>	<u>This Month</u>	<u>Last Month</u>	<u>YTD</u>
Number of Events	60	42	147	27	21	74	8	7	26	1,216	1,128	3,603
Number of Incidents	60	42	147	27	21	74	8	7	26	0	0	0
TMC Detection (min.)	0.00	0.00	0.00	0.00	0.00	0.00	0.21	0.00	0.06	0.00	0.00	0.00
TMC Verification (min.)	1.82	2.10	1.85	4.22	8.43	4.83	3.49	0.00	7.27	3.16	4.21	3.30
TMC Response (min.)	3.04	4.10	3.47	8.49	12.60	9.39	7.57	24.74	22.03	4.97	7.32	5.72
RR Dispatch Time (min.)	1.16	0.70	0.93	2.63	3.09	3.28	1.77	16.17	15.70	1.80	2.60	2.01
RR Resp. Time (min.)	1.90	3.41	2.55	5.85	9.51	6.11	5.79	8.57	6.34	3.21	4.74	3.76
Event Clearance (min.)	34.29	37.73	41.56	86.81	66.27	76.35	103.38	139.07	127.97	21.76	21.84	21.07
Roadway Clear. (min.)	13.48	12.73	13.98	55.01	53.96	51.30	81.90	100.69	104.51			
Incident Clearance (min.)	34.29	37.73	41.56	86.81	66.27	76.35	103.38	139.07	127.97			
# of Events w/ RR/SIRV	52	37	130	17	18	59	6	5	18	1,006	899	2,825
RR/SIRV Responses	52	37	130	17	18	59	6	5	18	1,006	899	2,825
RR/SIRV Activities	65	51	170	28	31	108	9	8	32	1,109	972	3,058

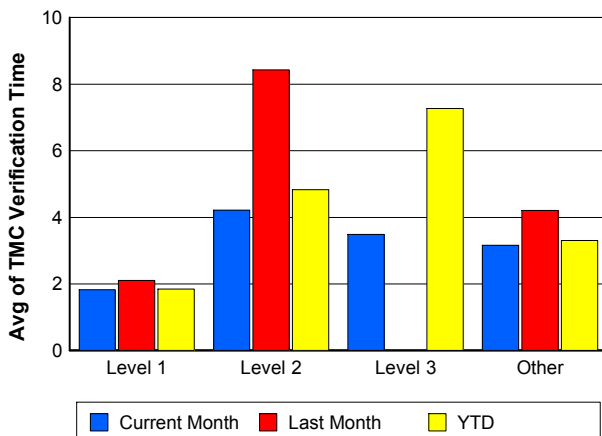
Number of Events / Severity



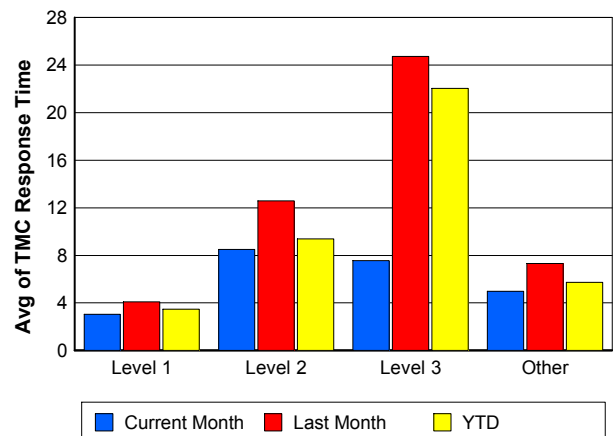
TMC Detection Time



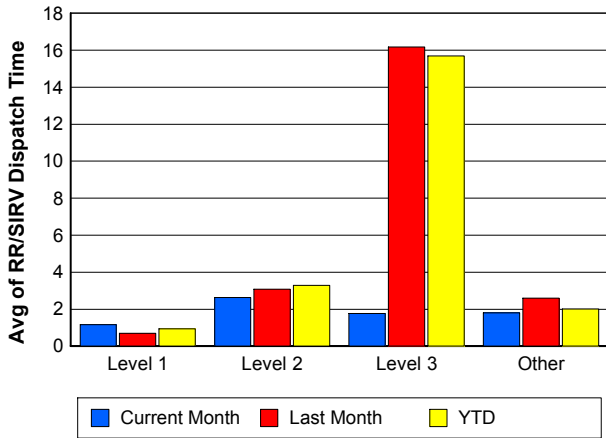
TMC Verification Time



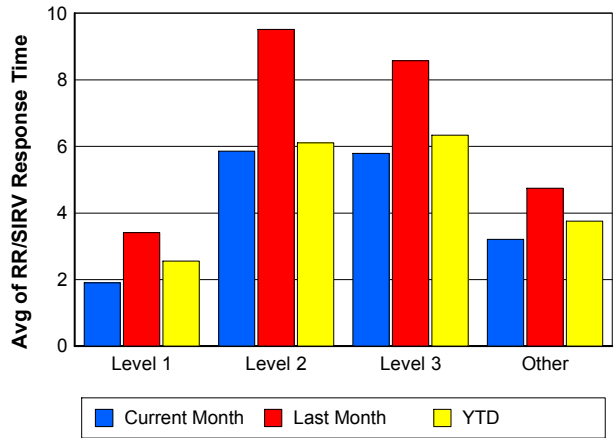
TMC Response Time



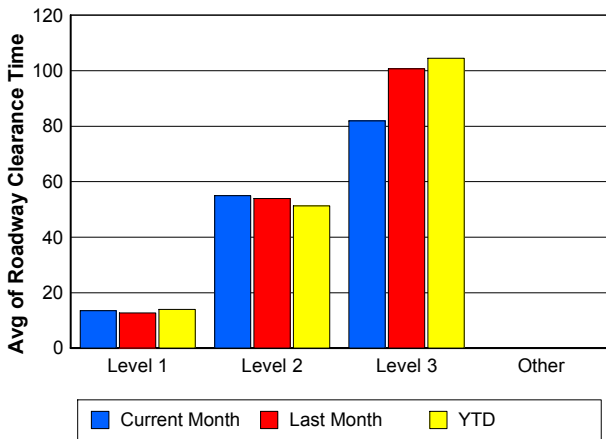
Road Ranger / SIRV Dispatch Time



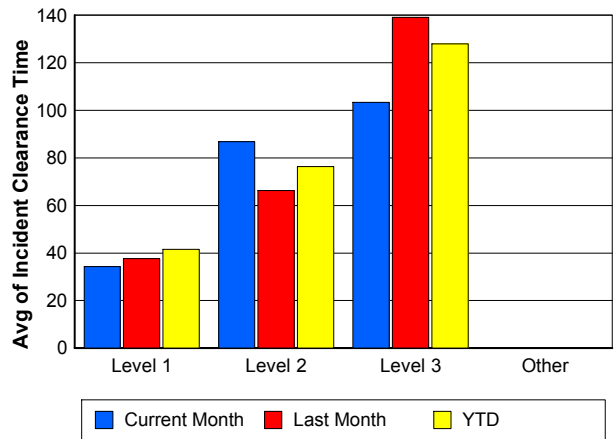
Road Ranger / SIRV Response Time



Roadway Clearance Time (2A)



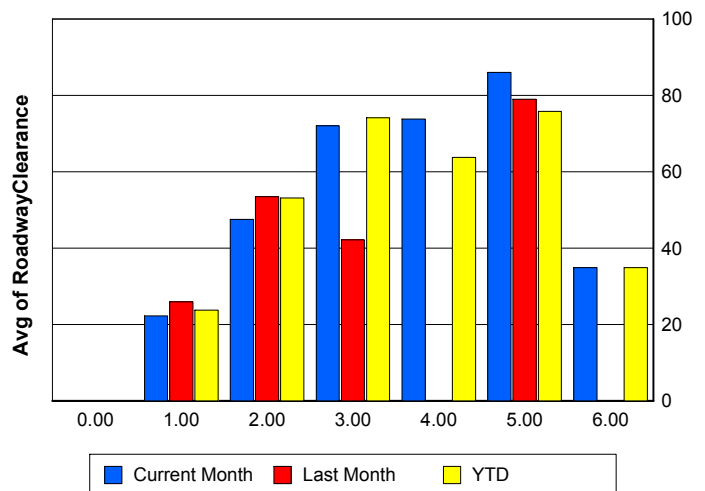
Incident Clearance Time (3B)



Roadway Clearance by Maximum Number of Lanes Blocked

	Current Month	Last Month	YTD
0			
1	22.26	25.90	23.73
2	47.48	53.42	53.14
3	72.04	42.16	74.09
4	73.77	0.00	63.77
5	86.03	78.96	75.82
6	34.87	0.00	34.87

Roadway Clearance Time (2A)



Performance Measures by Roadway

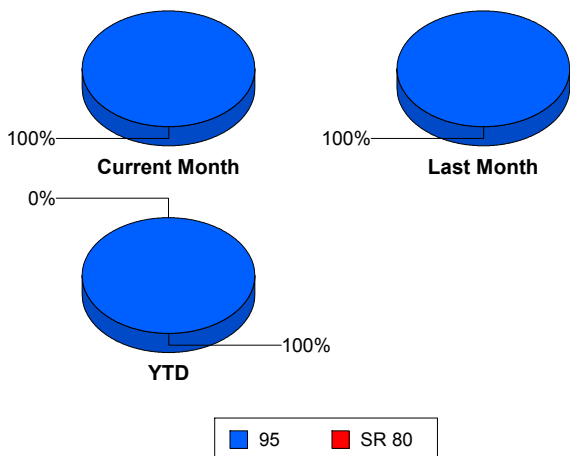
95

	<u>Current Month</u>	<u>Last Month</u>	<u>YTD</u>
Number of Events	1,311	1,198	3,848
Number of Incidents	95	70	246
TMC Detection (min.)	0.00	0.00	0.00
TMC Verification (min.)	3.13	4.18	3.30
TMC Response (min.)	4.95	7.39	5.79
RR Dispatch Time (min.)	1.78	2.61	2.07
RR Resp. Time (min.)	3.20	4.80	3.77
Event Clearance (min.)	24.17	23.86	23.62
Roadway Clear. (min.)	31.04	33.90	34.69
Incident Clearance (min.)	55.03	56.43	61.15
# of Events w/ RR/SIRV	1,081	959	3,032
RR/SIRV Responses	1,081	959	3,032
RR/SIRV Activities	1,211	1,062	3,368

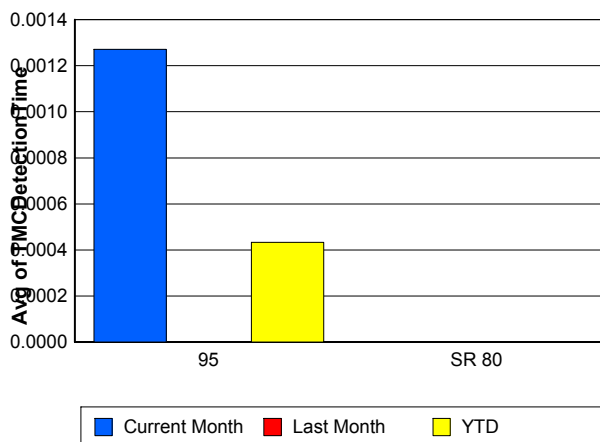
SR 80

	<u>YTD</u>
Number of Events	2
Number of Incidents	1
TMC Detection (min.)	0.00
TMC Verification (min.)	
TMC Response (min.)	
RR Dispatch Time (min.)	
RR Resp. Time (min.)	
Event Clearance (min.)	71.17
Roadway Clear. (min.)	34.23
Incident Clearance (min.)	43.68
# of Events w/ RR/SIRV	0
RR/SIRV Responses	0
RR/SIRV Activities	0

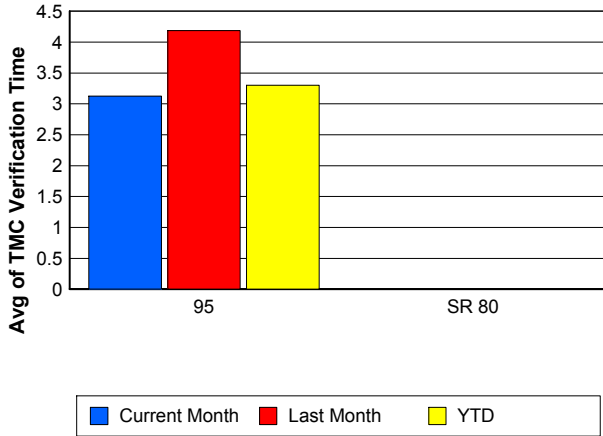
Number of Events / Roadway



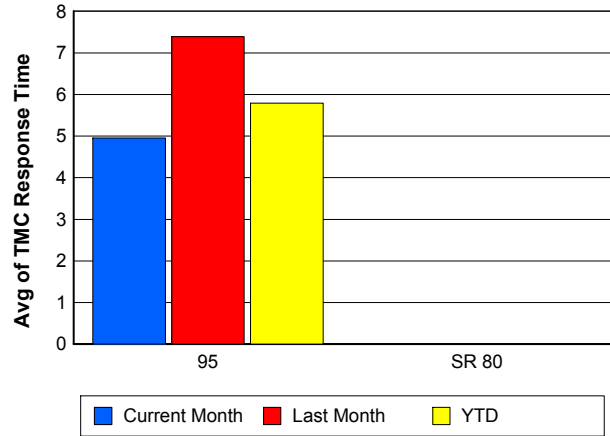
TMC Detection Time



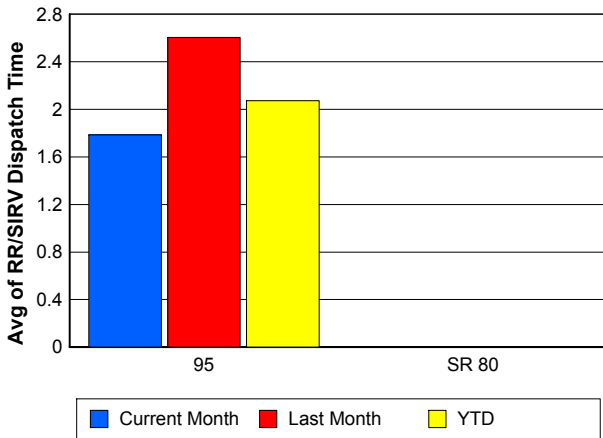
TMC Verification Time



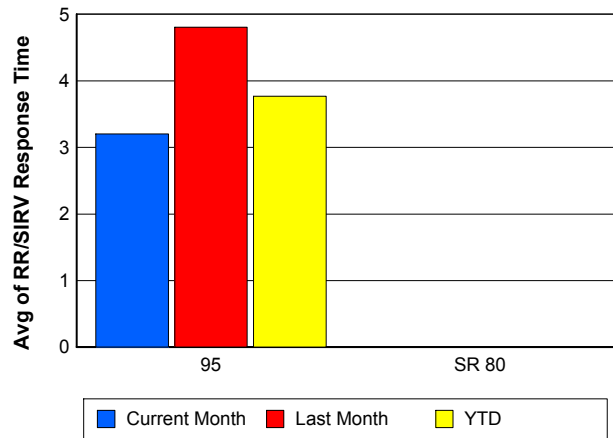
TMC Response Time



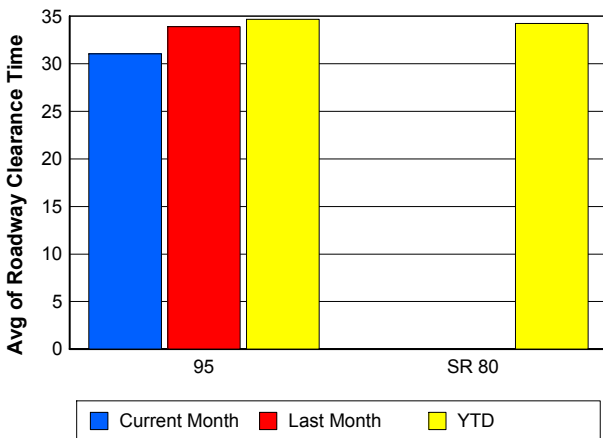
Road Ranger / SIRV Dispatch Time



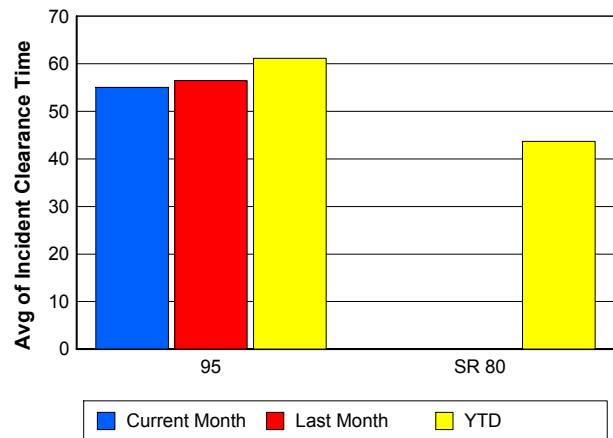
Road Ranger / SIRV Response Time



Roadway Clearance Time (2A)



Incident Clearance Time (3B)



Performance Measures by Event Type

Accident

	<u>Current Month</u>	<u>Last Month</u>	<u>YTD</u>
Number of Events	125	100	331
Number of Incidents	55	42	151
TMC Detection (min.)	0.01	0.00	0.01
TMC Verification (min.)	2.95	4.79	4.01
TMC Response (min.)	4.94	8.12	7.11
RR Dispatch Time (min.)	1.03	2.15	2.39
RR Response Time (min.)	3.91	5.98	4.72
Event Clearance (min.)	54.01	52.98	56.24
Roadway Clearance (min.)	31.91	42.64	39.28
Incident Clearance (min.)	57.36	70.79	70.45
# of Events w/ RR/SIRV	100	84	276
RR/SIRV Assists	100	84	276
RR/SIRV Activities	125	111	366

Debris on Roadway

	<u>Current Month</u>	<u>Last Month</u>	<u>YTD</u>
Number of Events	102	74	267
Number of Incidents	5	4	13
TMC Detection (min.)	0.00	0.00	0.00
TMC Verification (min.)	7.52	11.99	8.51
TMC Response (min.)	7.83	12.72	9.01
RR Dispatch Time (min.)	1.36	2.88	1.91
RR Response Time (min.)	6.53	9.81	7.11
Event Clearance (min.)	12.08	15.12	12.69
Roadway Clearance (min.)	8.90	18.70	14.71
Incident Clearance (min.)	10.31	18.89	15.93
# of Events w/ RR/SIRV	102	73	265
RR/SIRV Assists	102	73	265
RR/SIRV Activities	105	79	278

Disabled Vehicle

	<u>Current Month</u>	<u>Last Month</u>	<u>YTD</u>
Number of Events	919	831	2,631
Number of Incidents	24	16	57
TMC Detection (min.)	0.00	0.00	0.00
TMC Verification (min.)	3.13	4.14	3.32
TMC Response (min.)	4.04	6.19	4.74
RR Dispatch Time (min.)	1.38	2.15	1.57
RR Response Time (min.)	2.71	4.09	3.24
Event Clearance (min.)	17.61	19.61	18.36
Roadway Clearance (min.)	24.83	14.06	21.09
Incident Clearance (min.)	36.38	25.02	33.74
# of Events w/ RR/SIRV	841	762	2,376
RR/SIRV Assists	841	762	2,376
RR/SIRV Activities	947	835	2,616

Emergency Vehicles

	<u>Current Month</u>	<u>Last Month</u>	<u>YTD</u>
Number of Events	4	1	6
Number of Incidents	2	1	3
TMC Detection (min.)	0.00	0.00	0.00
TMC Verification (min.)	0.00	0.00	0.00
TMC Response (min.)	11.26		7.51
RR Dispatch Time (min.)	8.01		5.34
RR Response Time (min.)	3.25		2.17
Event Clearance (min.)	41.56	3.28	31.68
Roadway Clearance (min.)	50.57	3.75	34.97
Incident Clearance (min.)	58.47	3.28	40.08
# of Events w/ RR/SIRV	2	0	3
RR/SIRV Assists	2	0	3
RR/SIRV Activities	3	0	4

Other

	<u>Current Month</u>	<u>Last Month</u>	<u>YTD</u>
Number of Events	105	109	388
Number of Incidents	2	3	6
TMC Detection (min.)	0.00	0.00	0.00
TMC Verification (min.)	0.41	1.62	0.79
TMC Response (min.)	33.09	24.23	26.07
RR Dispatch Time (min.)	21.43	14.29	16.26
RR Response Time (min.)	4.06	7.80	5.99
Event Clearance (min.)	54.34	38.22	39.19
Roadway Clearance (min.)	24.73	57.74	38.11
Incident Clearance (min.)	26.43	82.63	52.15
# of Events w/ RR/SIRV	22	28	74
RR/SIRV Assists	22	28	74
RR/SIRV Activities	16	25	61

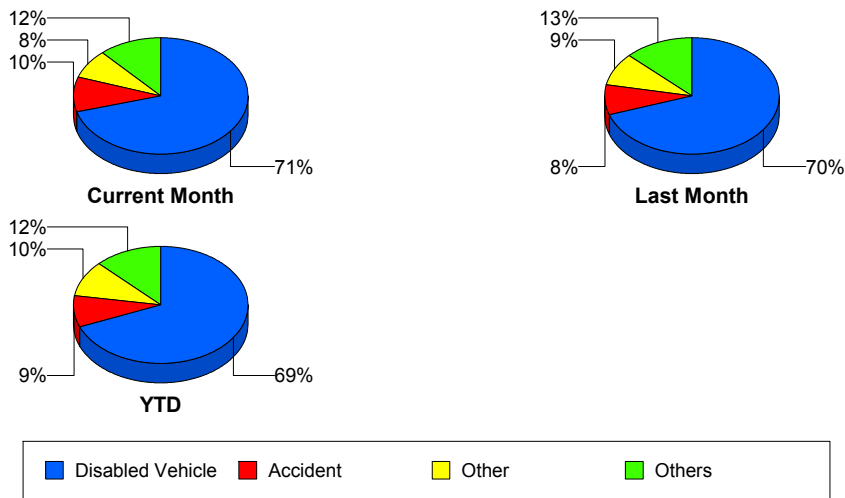
Police Activity

	<u>Current Month</u>	<u>Last Month</u>	<u>YTD</u>
Number of Events	46	76	197
Number of Incidents	6	3	12
TMC Detection (min.)	0.00	0.00	0.00
TMC Verification (min.)	0.71	0.00	0.17
TMC Response (min.)	10.41	13.21	12.37
RR Dispatch Time (min.)	5.76	10.31	9.34
RR Response Time (min.)	4.65	2.90	3.03
Event Clearance (min.)	32.91	18.94	22.76
Roadway Clearance (min.)	63.61	21.74	58.77
Incident Clearance (min.)	152.06	61.33	119.83
# of Events w/ RR/SIRV	6	6	15
RR/SIRV Assists	6	6	15
RR/SIRV Activities	7	6	17

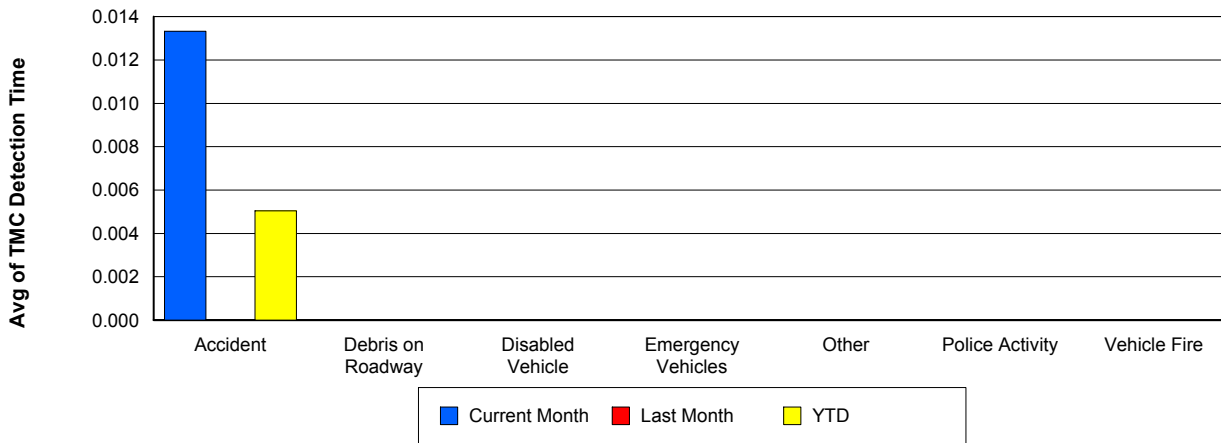
Vehicle Fire

	<u>Current Month</u>	<u>Last Month</u>	<u>YTD</u>
Number of Events	1	1	6
Number of Incidents	1	1	5
TMC Detection (min.)	0.00	0.00	0.00
TMC Verification (min.)	0.00	0.00	1.59
TMC Response (min.)		0.00	5.25
RR Dispatch Time (min.)		0.00	1.36
RR Response Time (min.)		0.00	3.89
Event Clearance (min.)	66.37	65.65	77.89
Roadway Clearance (min.)	21.73	39.93	40.97
Incident Clearance (min.)	66.37	65.65	89.54
# of Events w/ RR/SIRV	0	1	4
RR/SIRV Assists	0	1	4
RR/SIRV Activities	0	1	6

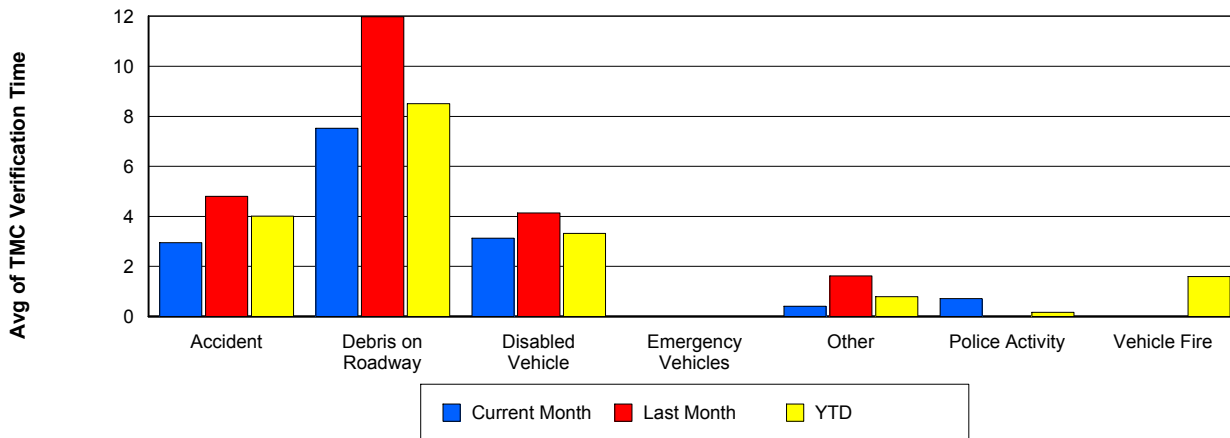
Number of Events / Event Type



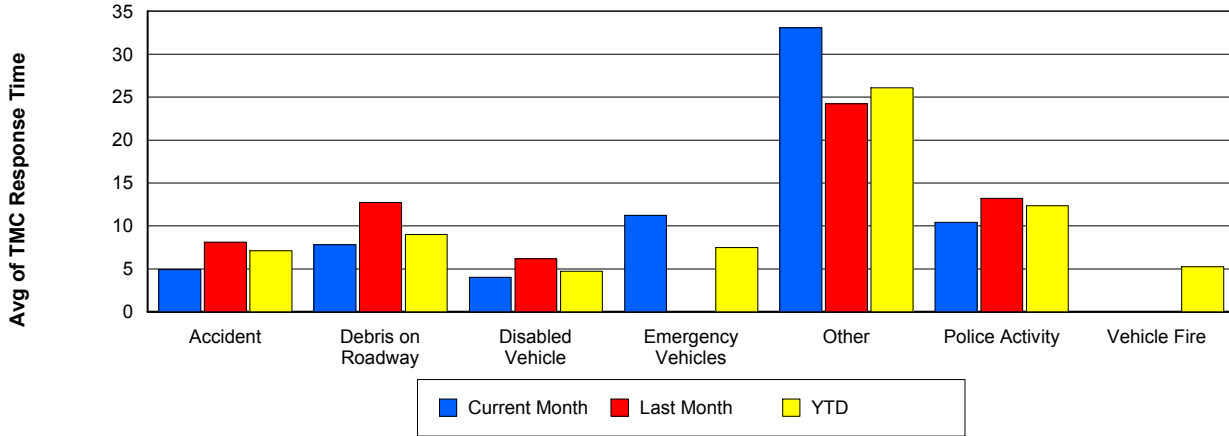
TMC Detection Time



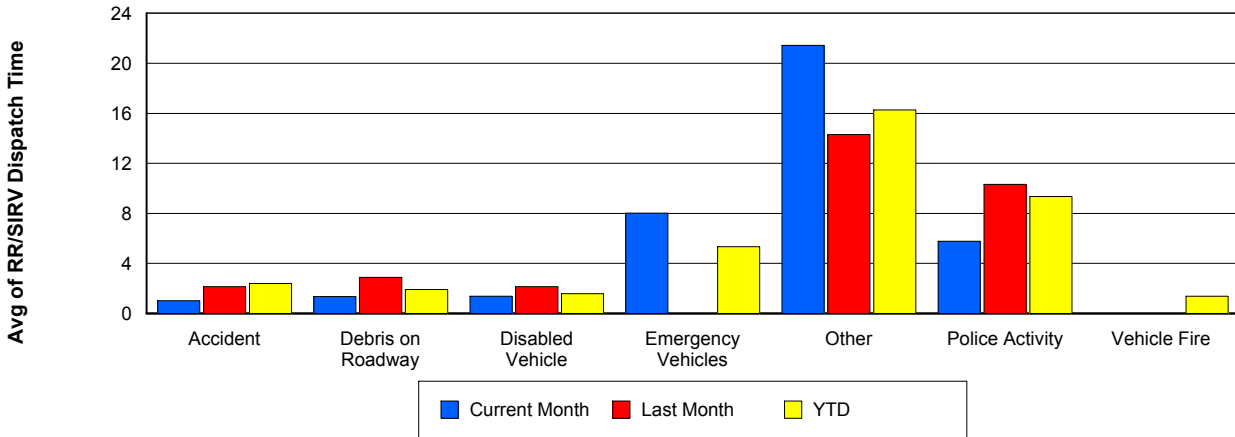
TMC Verification Time



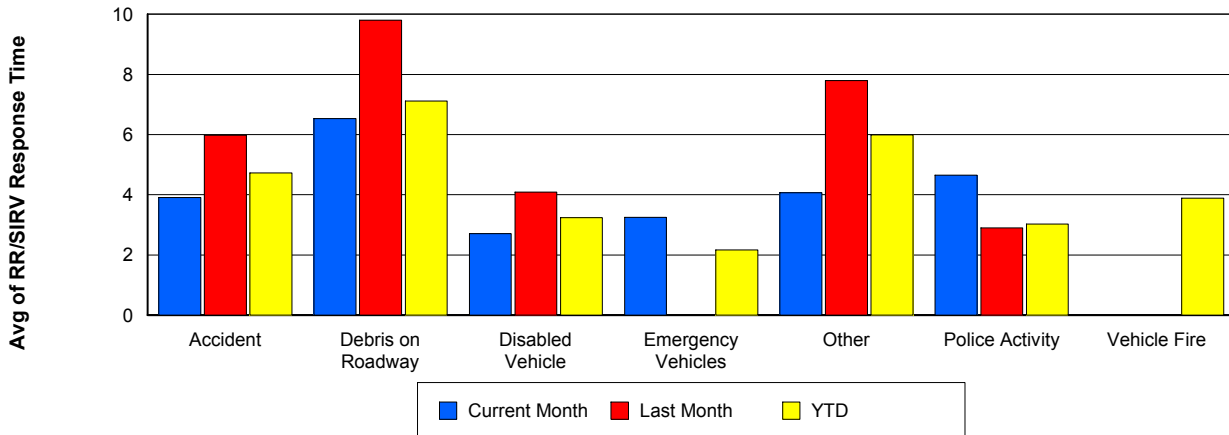
TMC Response Time



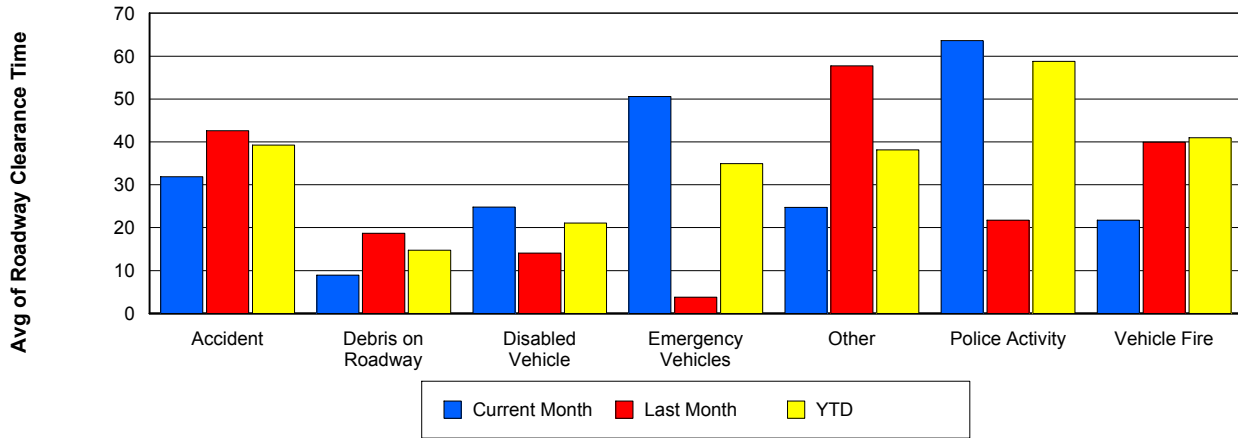
Road Ranger / SIRV Dispatch Time



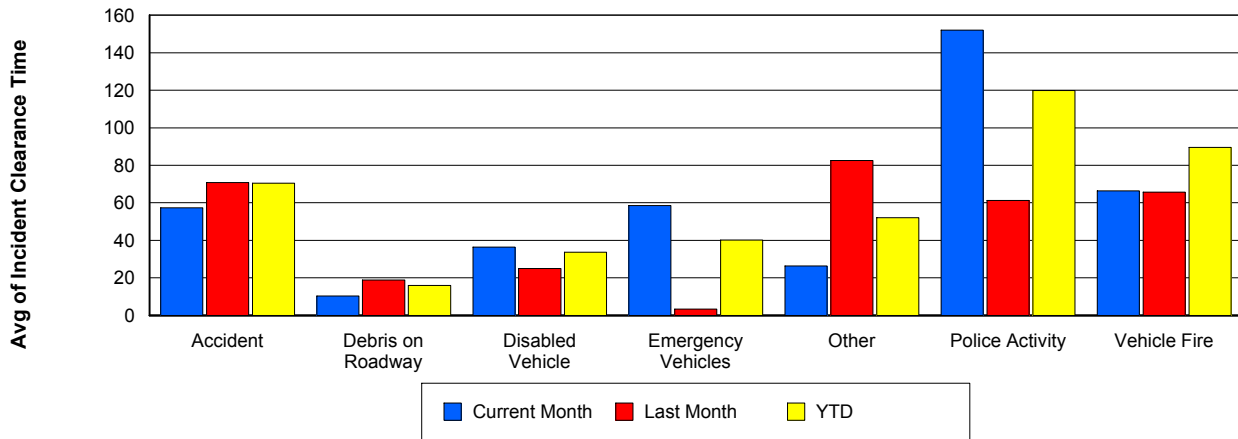
Road Ranger / SIRV Response Time



Roadway Clearance Time (2A)



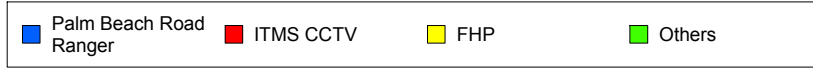
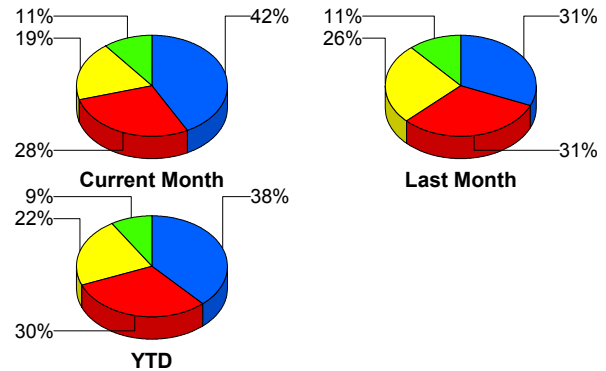
Incident Clearance Time (3B)



Incident Detection Methods

	Current Month	Last Month	YTD
Broward CCTV	1	3	4
Broward Road Ranger	2	0	2
District 4	2	0	4
FHP	18	18	55
I-95 Construction PIO	0	2	2
ITMS	0	2	2
ITMS CCTV	27	22	75
Motorist	4	1	6
Palm Beach Road Ran	40	22	95
Road Watcher	1	0	1
SmarTraveler (511)	0	0	1
Total	95	70	247

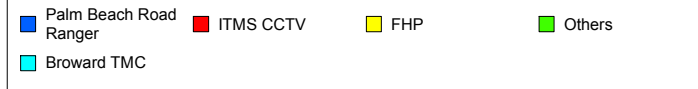
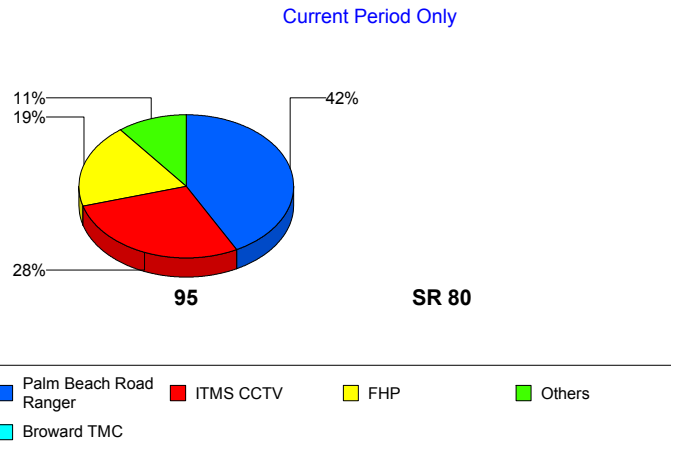
Total Incidents by Detection Method



Incident Detection Methods by Roadway

		Current Month	Last Month	YTD
95	Broward CCTV	1	3	4
	Broward Road Ranger	2	0	2
	District 4	2	0	4
	FHP	18	18	54
	I-95 Construction PIO	0	2	2
	ITMS	0	2	2
	ITMS CCTV	27	22	75
	Motorist	4	1	6
	Palm Beach Road Ran	40	22	95
	Road Watcher	1	0	1
	SmarTraveler (511)	0	0	1
	Total	95	70	246
SR 80	FHP	0	0	1
	Total	0	0	1
Total	95	70	247	

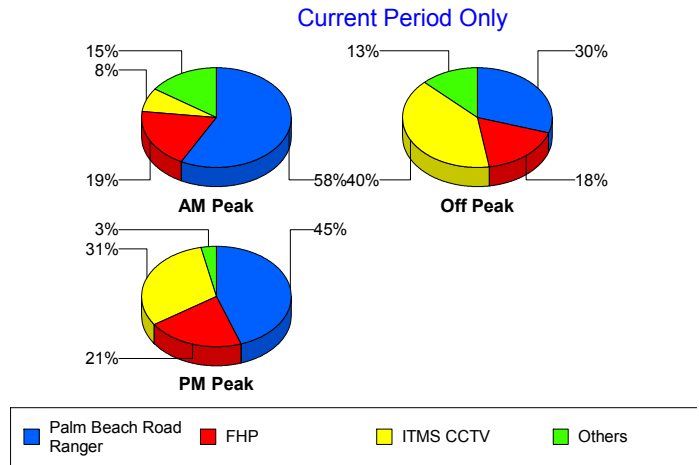
Total Events by Roadway and Detection Method



Incident Detection Methods by Peak Period

		Current Month	Last Month	YTD
AM Peak	Broward Road Ranger	1	0	1
	District 4	0	0	2
	FHP	5	7	20
	ITMS	0	1	1
	ITMS CCTV	2	3	11
	Motorist	2	0	2
	Palm Beach Road Ran	15	7	28
	Road Watcher	1	0	1
	SmarTraveler (511)	0	0	1
	Total	26	18	67
Off Peak	Broward CCTV	1	3	4
	Broward Road Ranger	1	0	1
	District 4	2	0	2
	FHP	7	4	18
	I-95 Construction PIO	0	2	2
	ITMS	0	1	1
	ITMS CCTV	16	12	40
	Motorist	1	0	1
	Palm Beach Road Ran	12	9	38
	Total	40	31	107
PM Peak	FHP	6	7	17
	ITMS CCTV	9	7	24
	Motorist	1	1	3
	Palm Beach Road Ran	13	6	29
	Total	29	21	73
Total	95	70	247	

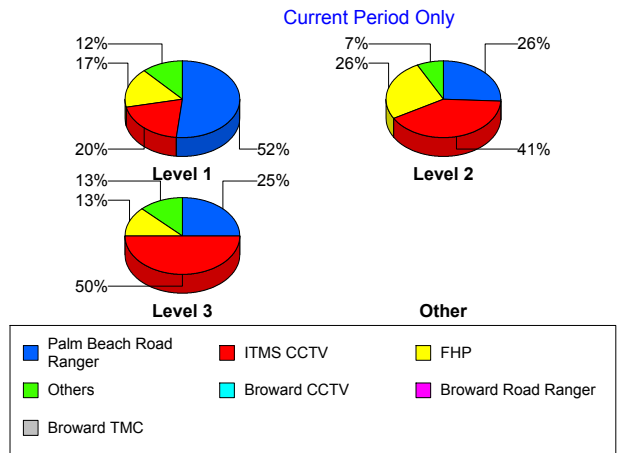
Total Events by Peak Period and Detection Method



Incident Detection Methods by Severity

		Current Month	Last Month	YTD
Level 1	Broward CCTV	1	1	2
	Broward Road Ranger	1	0	1
	District 4	2	0	4
	FHP	10	9	24
	I-95 Construction PIO	0	1	1
	ITMS CCTV	12	11	33
	Motorist	2	1	4
	Palm Beach Road Ran	31	19	76
	Road Watcher	1	0	1
	SmarTraveler (511)	0	0	1
	Total	60	42	147
Level 2	Broward Road Ranger	1	0	1
	FHP	7	9	24
	I-95 Construction PIO	0	1	1
	ITMS	0	2	2
	ITMS CCTV	11	7	30
	Motorist	1	0	1
	Palm Beach Road Ran	7	2	15
	Total	27	21	74
Level 3	Broward CCTV	0	2	2
	FHP	1	0	7
	ITMS CCTV	4	4	12
	Motorist	1	0	1
	Palm Beach Road Ran	2	1	4
	Total	8	7	26
Total	95	70	247	

Total Events by Severity and Detection Method



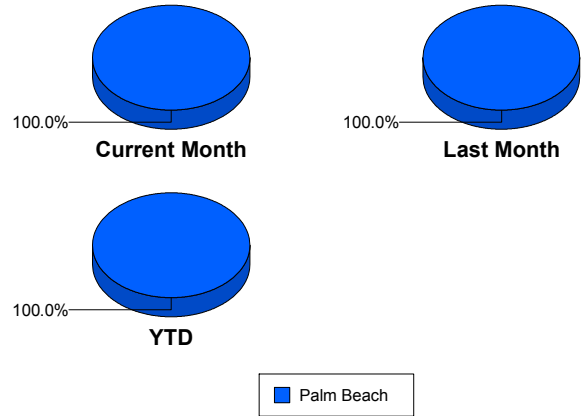
Road Ranger / SIRV Performance Measures

Road Ranger / SIRV Performance By County

Values presented are:
 - Total Events with a RR/SIRV Response
 - Total RR/SIRV Responses,
 - Total Activities Performed

	Current Mo	Last Month	YTD
Palm Beach	1,412	1,234	3,951
	1,453	1,282	4,092
	1,568	1,366	4,377

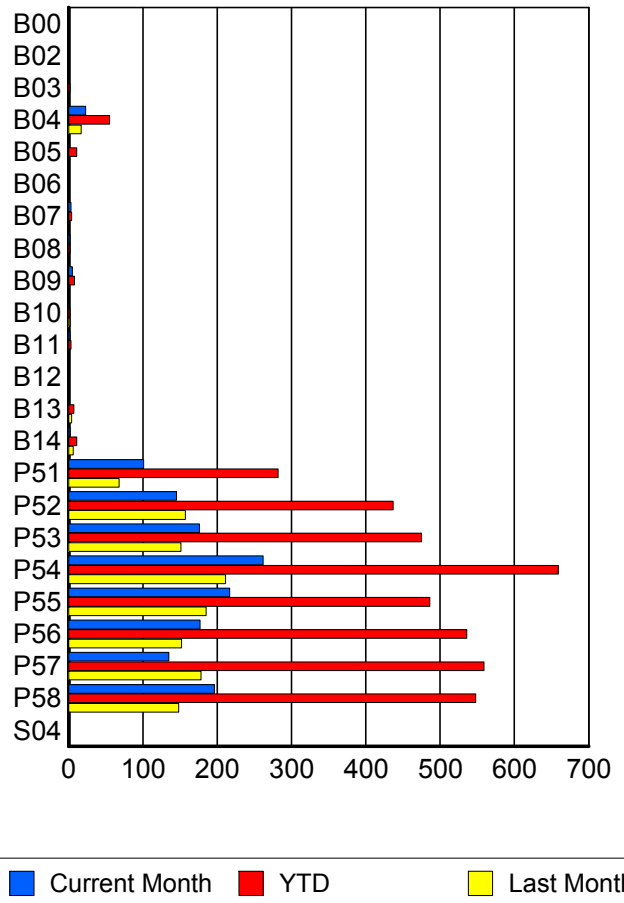
RR/SIRV Responses per County



Road Ranger / SIRV Performance By Truck

	Current Mo	Last Month	YTD
B00	1	0	1
	1	0	1
	1	0	1
B02	1	0	1
	1	0	1
	1	0	1
B03	1	1	2
	1	1	2
	1	1	2
B04	22	17	54
	23	17	55
	25	20	61
B05	1	0	10
	1	0	11
	1	0	11
B06	1	0	1
	1	0	1
	1	0	1
B07	3	0	4
	3	0	4
	3	0	4
B08	2	0	2
	2	0	2
	2	0	2
B09	5	1	8
	5	1	8
	5	1	8

RR/SIRV Responses per Truck



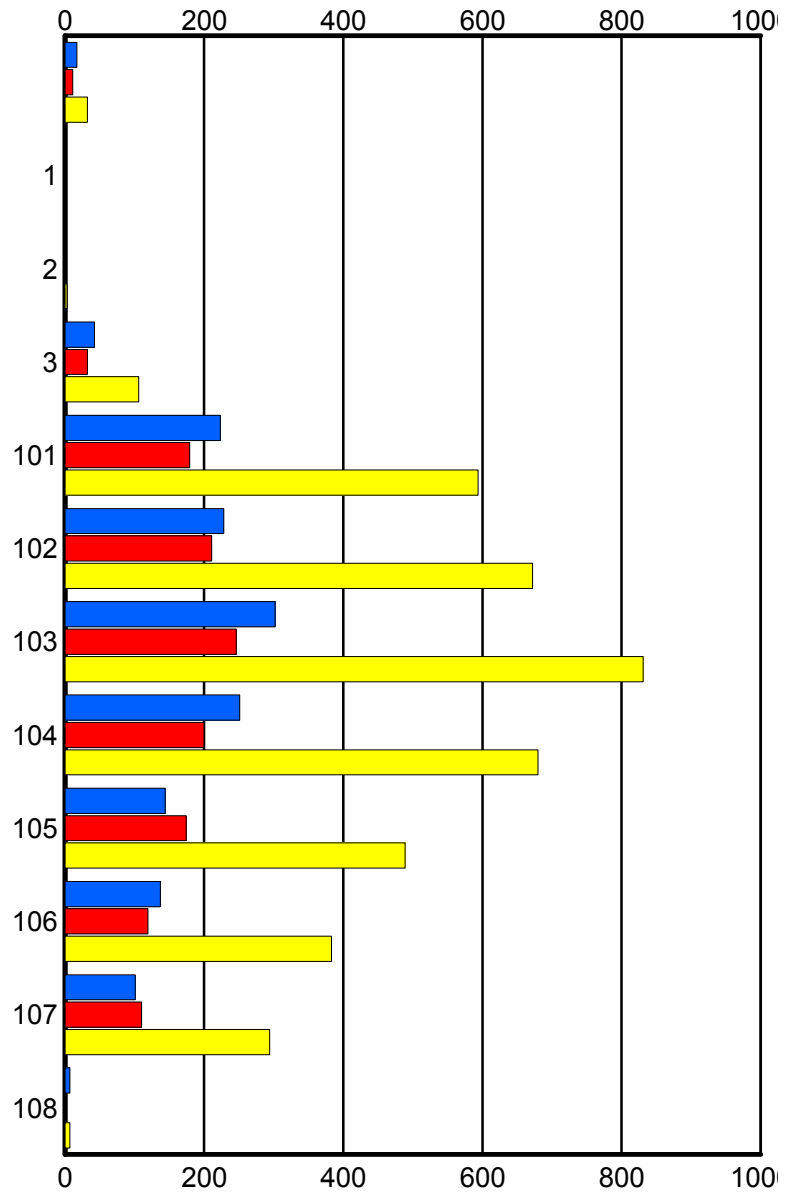
	Current Mo	Last Month	YTD
B10	0 0 0	2 2 2	2 2 2
B11	2 2 2	0 0 0	3 3 3
B12	0 0 0	1 1 1	1 1 1
B13	1 1 1	4 4 4	7 7 7
B14	2 2 3	6 6 6	11 11 12
P51	101 101 103	67 68 70	280 282 295
P52	145 145 161	156 157 165	433 437 468
P53	174 176 197	150 151 160	469 475 514
P54	262 262 275	209 211 228	654 659 702
P55	216 217 238	184 185 199	482 486 522
P56	174 177 203	150 152 164	527 536 588
P57	135 135 143	177 178 194	557 559 602
P58	193 196 201	146 148 151	542 548 569
S04	1 1 1	0 0 0	1 1 1

Road Ranger / SIRV Performance By Beat

	Current Mo	Last Month	YTD
	17	11	32
	17	11	32
	17	11	32
1	1	0	1
	1	0	1
	1	0	1
2	0	0	3
	0	0	3
	0	0	4
3	41	32	104
	42	32	106
	45	35	112
101	220	178	588
	223	179	594
	256	192	650
102	226	208	666
	228	211	672
	235	226	707
103	302	242	822
	302	246	831
	324	266	896
104	250	198	673
	251	200	680
	279	215	734
105	143	173	486
	144	174	489
	151	185	518
106	136	118	376
	137	119	383
	150	124	410
107	101	108	292
	101	110	294
	103	112	306
108	6	0	6
	7	0	7
	7	0	7

Values presented are:
 - Total Events with a RR/SIRV Response
 - Total RR/SIRV Responses,
 - Total Activities Performed

RR/SIRV Responses per Beat



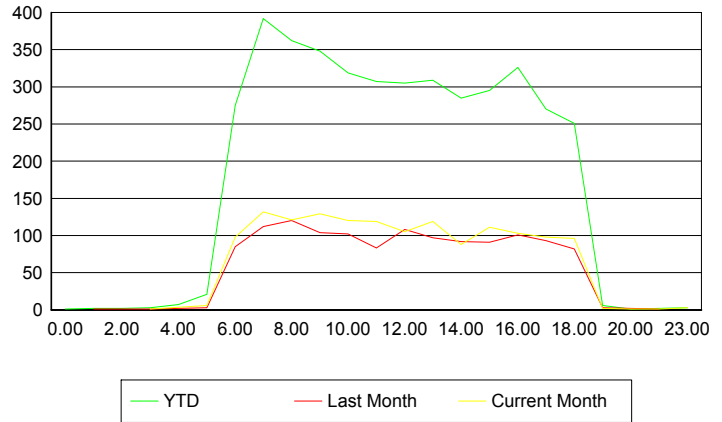
■ Current Month
 ■ Last Month
 ■ YTD

Road Ranger / SIRV Performance By Time of Day

Values presented are:
 - Total Events with a RR/SIRV Response
 - Total RR/SIRV Responses,
 - Total Activities Performed

	Current Mo	Last Month	YTD
12AM-1AM	0 0 0	0 0 0	1 1 1
1AM-2AM	0 0 0	1 1 1	2 2 2
2AM-3AM	0 0 0	1 1 1	2 2 2
3AM-4AM	1 1 1	1 1 1	3 3 3
4AM-5AM	0 0 0	2 2 2	4 7 8
5AM-6AM	6 6 6	3 3 3	19 21 21
6AM-7AM	97 98 105	84 85 87	264 275 292
7AM-8AM	126 132 136	106 112 121	373 392 420
8AM-9AM	115 121 134	113 120 129	346 362 390
9AM-10AM	125 129 144	100 104 117	338 348 387
10AM-11AM	118 120 132	99 102 106	309 319 343
11AM-12PM	113 119 132	79 83 88	295 307 335
12PM-1PM	102 105 117	104 108 113	297 305 327

Number of Responses / Hour of the Day



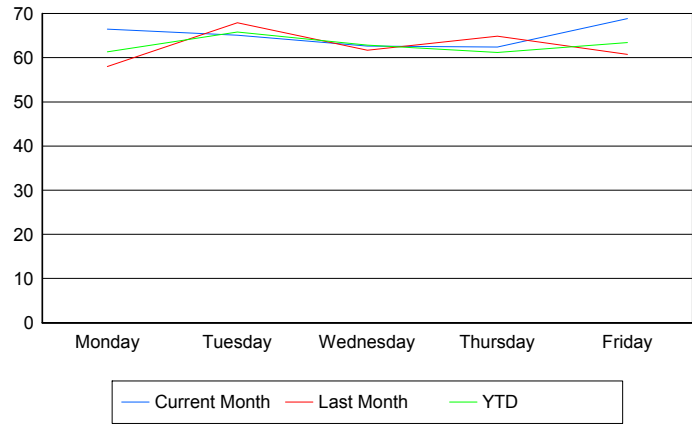
	Current Mo	Last Month	YTD
1PM-2PM	119	93	303
	119	97	309
	124	111	334
2PM-3PM	86	85	274
	88	92	285
	91	99	297
3PM-4PM	107	87	284
	111	91	295
	120	95	310
4PM-5PM	99	99	314
	103	101	326
	112	104	343
5PM-6PM	95	93	263
	98	93	270
	104	99	287
6PM-7PM	96	80	248
	96	82	251
	103	84	262
7PM-8PM	2	3	6
	2	3	6
	2	4	7
8PM-9PM	1	0	1
	1	0	1
	1	0	1
10PM-11PM	1	1	2
	1	1	2
	1	1	2
11PM-12AM	3	0	3
	3	0	3
	3	0	3

Road Ranger / SIRV Performance By Day of Week

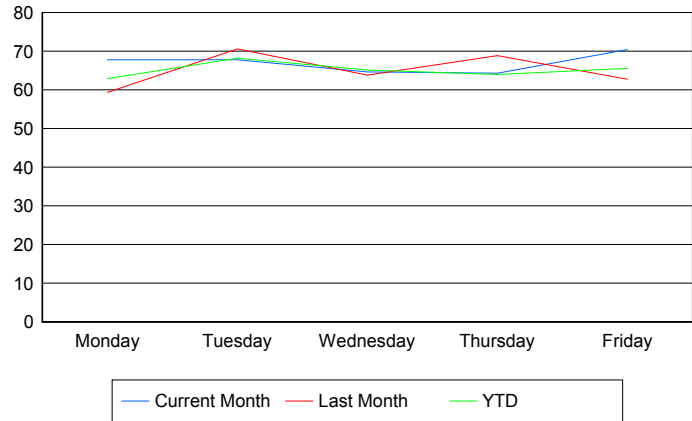
Values presented are:
 - Total Events with a RR/SIRV Response
 - Total RR/SIRV Responses,
 - Total Activities Performed

	Current Mo	Last Month	YTD
Monday	331	229	784
	337	234	804
	358	244	852
Tuesday	318	265	837
	331	275	866
	360	290	926
Wednesday	248	244	746
	256	252	773
	274	273	829
Thursday	248	258	778
	255	274	814
	277	294	874
Friday	267	240	808
	274	247	835
	299	265	896

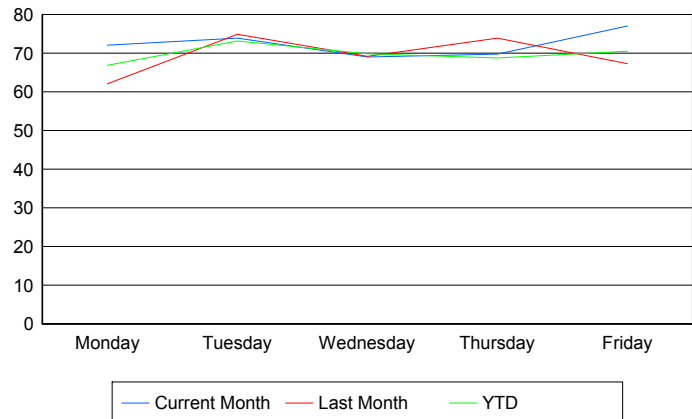
Avg # of events with a RR/SIRV Response per Day of the Week



Avg # of RR/SIRV Responses per Day of the Week



Avg # of RR/SIRV Activities Performed per Day of the Week



Road Ranger / SIRV Responses per Time of Day and Day of Week

