



# Monthly Performance Measures Report Palm Beach County



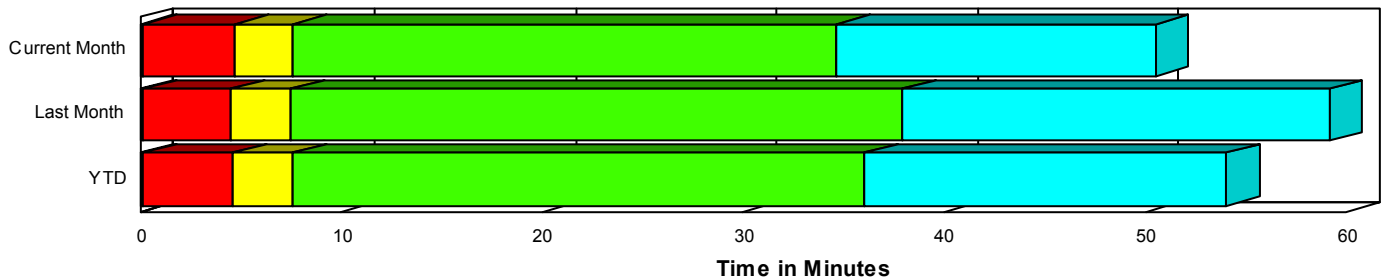
Created on:  
April 09, 2008  
8:38 am

Period From Feb 1, 2008 to Feb 29, 2008

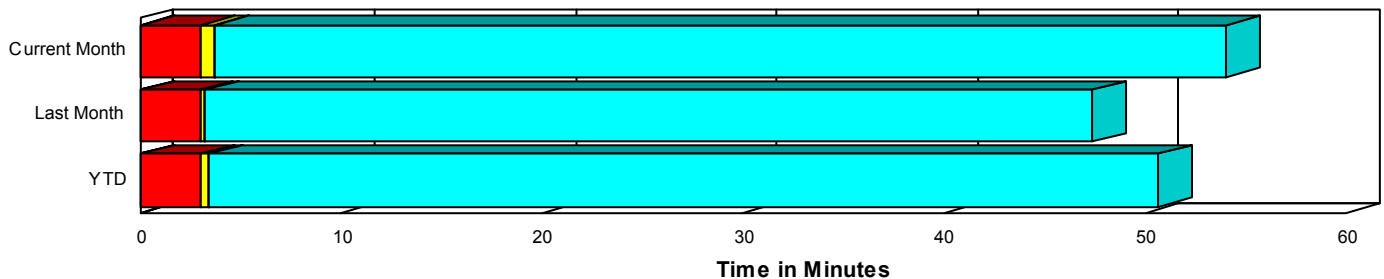
## Performance Measures Summary

	Traffic Events (No Lanes Blocked)			Incidents (Lanes Blocked)		
	<u>This Month</u>	<u>Last Month</u>	<u>YTD</u>	<u>This Month</u>	<u>Last Month</u>	<u>YTD</u>
Number of Events	2,471	2,560	5,031	195	129	324
TMC Detection (min.)	0.08	0.06	0.07	0.16	0.17	0.16
TMC Verification (min.)	2.94	2.93	2.94	4.54	4.33	4.46
TMC Response (min.)	3.82	3.21	3.51	7.57	7.47	7.53
RR Dispatch Time (min.)	1.43	0.80	1.11	2.21	1.68	1.99
RR Response Time (min.)	2.43	2.46	2.45	5.78	5.78	5.78
Roadway Clearance (min.)				33.22	36.98	34.72
Event Clearance (min.)	54.17	47.42	50.74	47.85	57.66	51.76
# of Events w/ RR/SIRV	2,352	2,445	4,797	176	125	301
RR/SIRV Responses	2,390	2,514	4,904	206	172	378
RR/SIRV Activities	2,558	2,638	5,196	245	184	429

### Incident Clearance TimeLine



### Traffic Event (Non-Lane Blockage) Time-Line



<span style="color: blue;">■</span> Avg. TMC Detection Time	<span style="color: green;">■</span> Avg. Time from TMC Response to Roadway Clearance*
<span style="color: red;">■</span> Avg. Time from TMC Detection to TMC Verification	<span style="color: cyan;">■</span> Avg. Time from Roadway Clearance to Incident/Event Clearance**
<span style="color: yellow;">■</span> Avg. Time from TMC Verification to TMC Response	

\* Roadway clearance equals all travel lanes open

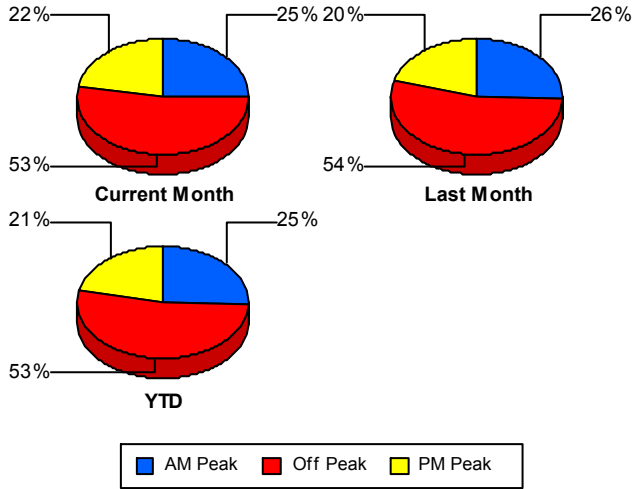
\*\* Incident clearance equals time when last responder has left the scene

## Performance Measures by Peak Period

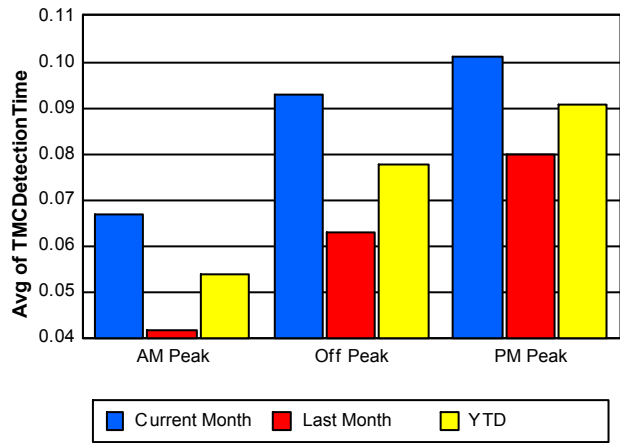
Note: AM peak period is defined as 6am to 10am and PM peak period is defined as 3pm to 7pm.

	AM Peak			Off Peak			PM Peak		
	Current Month	Last Month	YTD	Current Month	Last Month	YTD	Current Month	Last Month	YTD
Number of Events	669	689	1,358	1,400	1,449	2,849	597	551	1,148
Number of Incidents	51	39	90	98	62	160	46	28	74
TMC Detection (min.)	0.07	0.04	0.05	0.09	0.06	0.08	0.10	0.08	0.09
TMC Verification (min.)	2.17	2.43	2.30	3.40	3.11	3.25	3.26	3.43	3.34
TMC Response (min.)	3.02	2.68	2.85	4.49	3.55	4.01	4.30	4.02	4.16
RR Dispatch Time (min.)	1.44	0.86	1.14	1.36	0.84	1.09	1.84	0.81	1.35
RR Response Time (min.)	1.65	1.83	1.74	3.14	2.78	2.95	2.70	3.21	2.95
Event Clearance (min.)	58.92	40.05	49.35	55.40	59.25	57.36	43.90	27.92	36.23
Roadway Clearance (min.)	23.52	28.36	25.61	36.20	42.09	38.48	37.62	37.69	37.65
Incident Clearance (min.)	39.61	59.53	48.24	52.28	61.16	55.72	47.56	47.30	47.46
# of Events w/ RR/SIRV	630	662	1,292	1,323	1,375	2,698	575	533	1,108
RR/SIRV Responses	643	694	1,337	1,363	1,438	2,801	590	554	1,144
RR/SIRV Activities	699	730	1,429	1,481	1,525	3,006	623	567	1,190

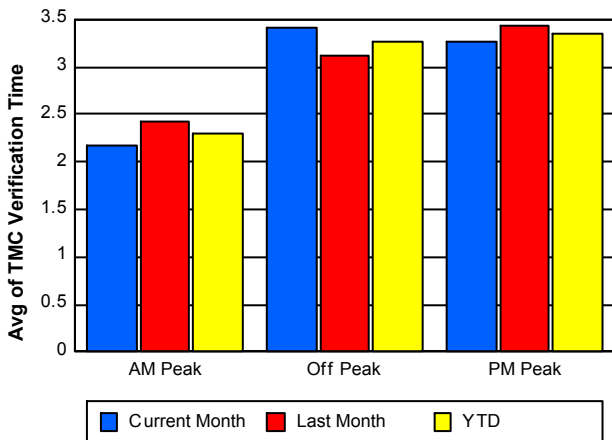
### Number of Events / Peak Period



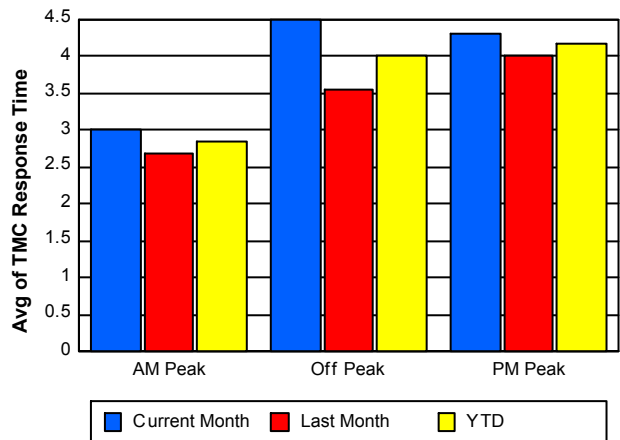
### TMC Detection Time



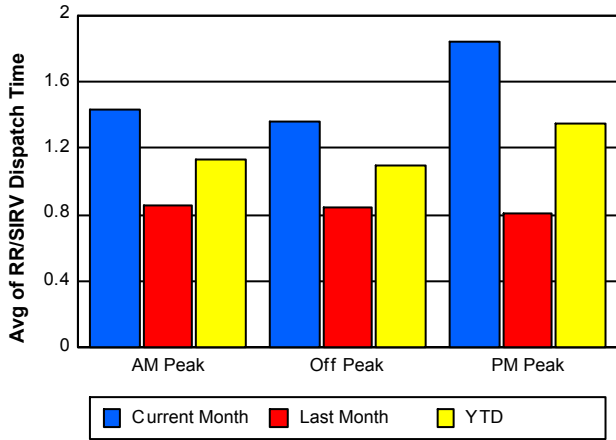
### TMC Verification Time



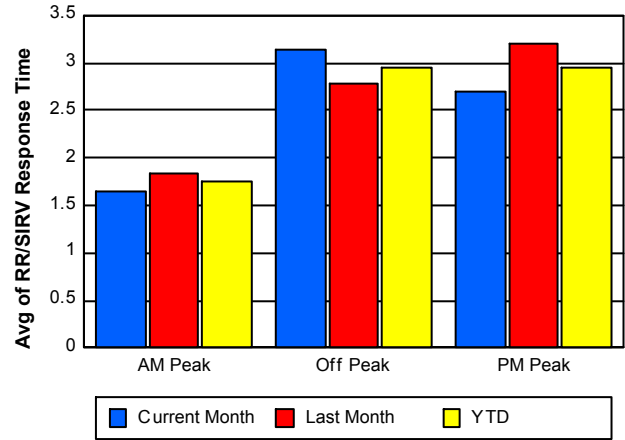
### TMC Response Time



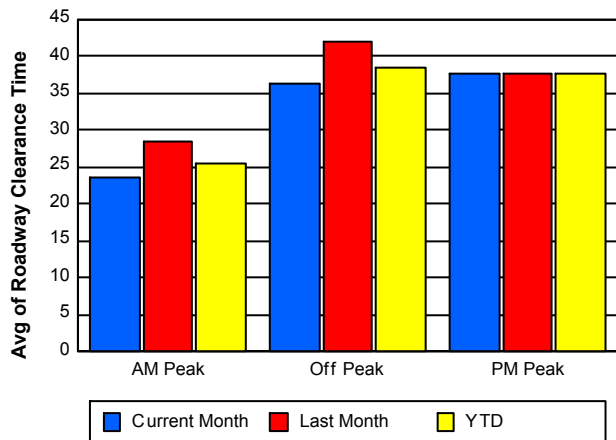
### Road Ranger / SIRV Dispatch Time



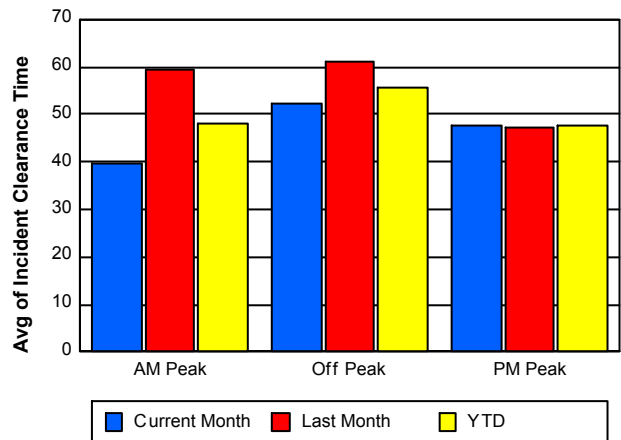
### Road Ranger / SIRV Response Time



### Roadway Clearance Time (2A)



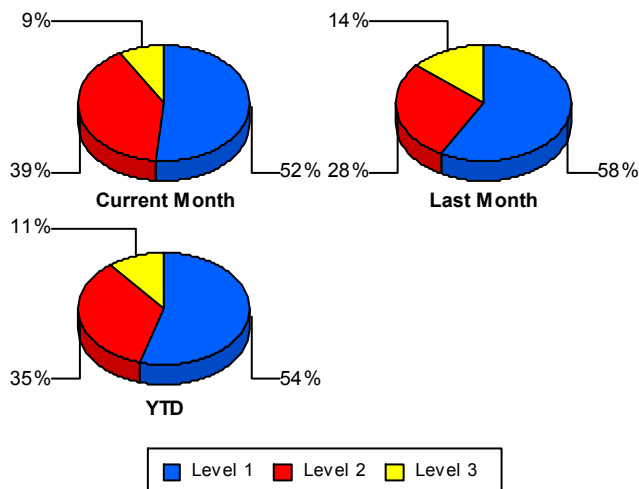
### Incident Clearance Time (3B)



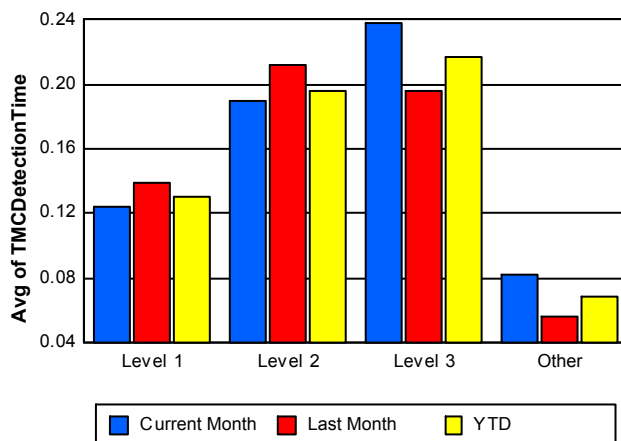
## Performance Measures by Severity

	Level 1			Level 2			Level 3			Other		
	<u>This Month</u>	<u>Last Month</u>	<u>YTD</u>	<u>This Month</u>	<u>Last Month</u>	<u>YTD</u>	<u>This Month</u>	<u>Last Month</u>	<u>YTD</u>	<u>This Month</u>	<u>Last Month</u>	<u>YTD</u>
Number of Events	101	75	176	77	36	113	17	18	35	2,471	2,560	5,031
Number of Incidents	101	75	176	77	36	113	17	18	35	0	0	0
TMC Detection (min.)	0.12	0.14	0.13	0.19	0.21	0.20	0.24	0.20	0.22	0.08	0.06	0.07
TMC Verification (min.)	2.31	3.14	2.67	7.41	7.39	7.40	4.84	3.18	3.99	2.94	2.93	2.94
TMC Response (min.)	3.99	4.40	4.17	10.20	11.80	10.72	15.36	11.32	13.21	3.82	3.21	3.51
RR Dispatch Time (min.)	1.27	1.08	1.18	1.66	2.81	2.04	9.90	1.87	5.76	1.43	0.80	1.11
RR Resp. Time (min.)	2.74	3.31	3.00	8.54	8.99	8.69	9.78	9.45	9.61	2.43	2.46	2.45
Event Clearance (min.)	28.51	34.89	31.22	63.32	70.01	65.45	92.73	127.83	110.78	54.17	47.42	50.74
Roadway Clear. (min.)	11.86	13.60	12.60	54.71	51.49	53.68	62.78	105.42	84.71			
Incident Clearance (min.)	28.51	34.89	31.22	63.32	70.01	65.45	92.73	127.83	110.78			
# of Events w/ RR/SIRV	87	72	159	74	36	110	15	17	32	2,352	2,445	4,797
RR/SIRV Responses	93	86	179	90	48	138	23	38	61	2,390	2,514	4,904
RR/SIRV Activities	106	93	199	111	53	164	28	38	66	2,558	2,638	5,196

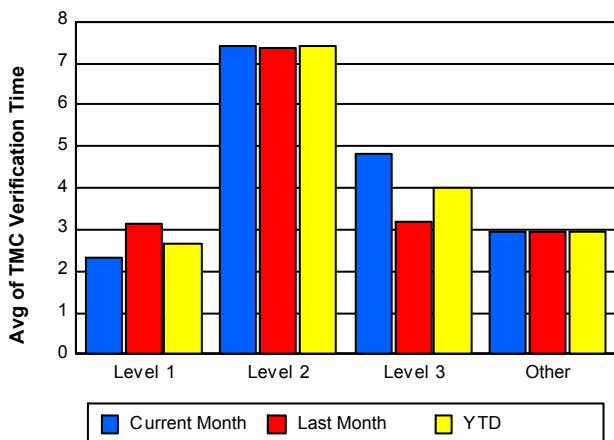
### Number of Events / Severity



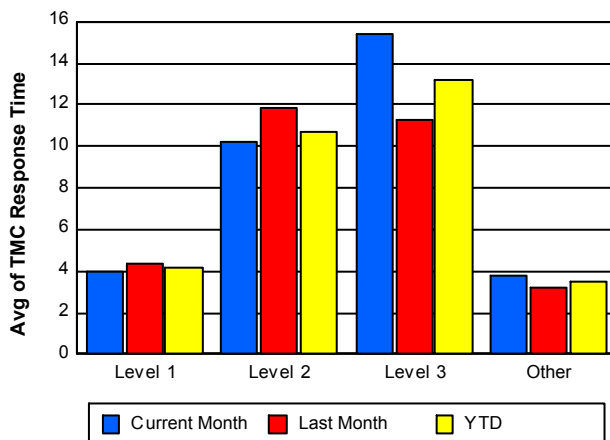
### TMC Detection Time



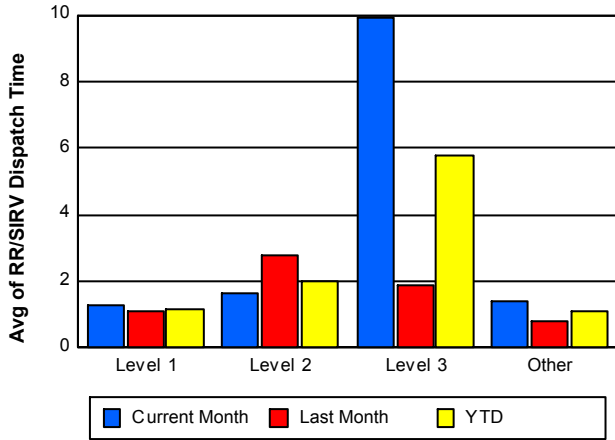
### TMC Verification Time



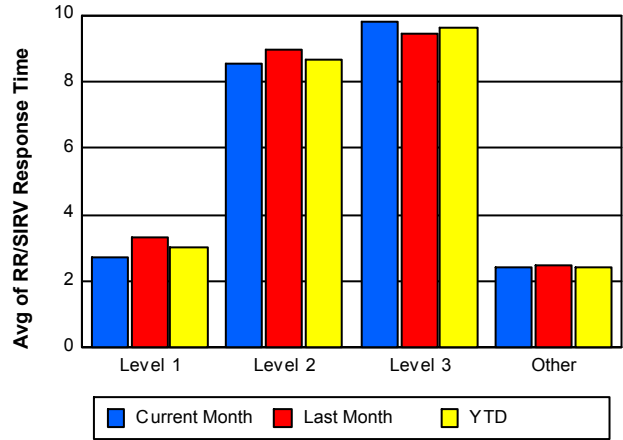
### TMC Response Time



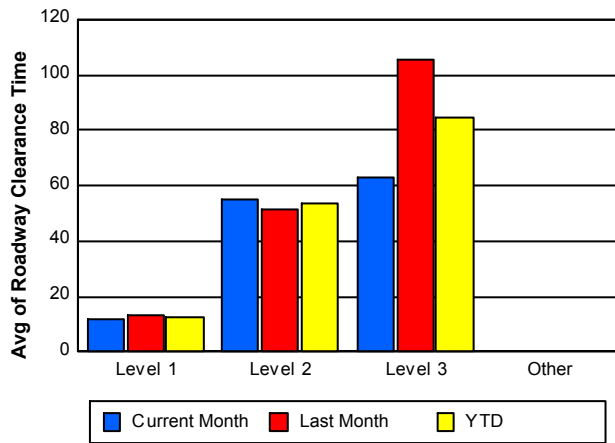
## Road Ranger / SIRV Dispatch Time



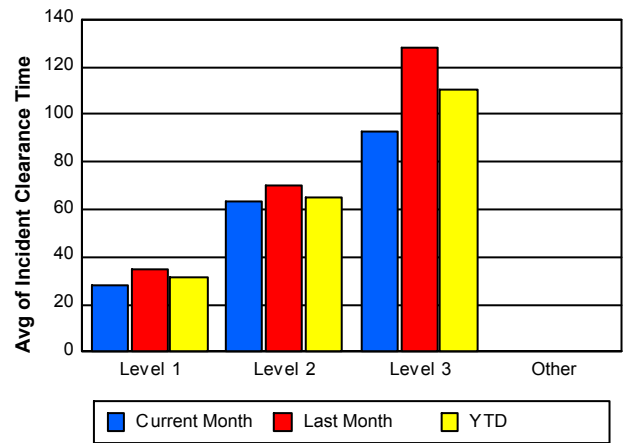
## Road Ranger / SIRV Response Time



## Roadway Clearance Time (2A)



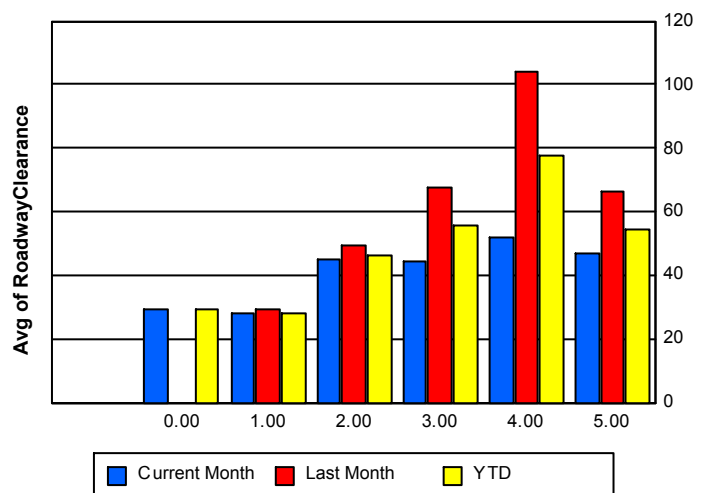
## Incident Clearance Time (3B)



## Roadway Clearance by Maximum Number of Lanes Blocked

	Current Month	Last Month	YTD
0	29.18		29.18
1	27.80	29.06	28.32
2	44.93	49.22	46.40
3	44.59	67.91	55.70
4	51.73	104.05	77.89
5	46.63	66.50	54.58

## Roadway Clearance Time (2A)

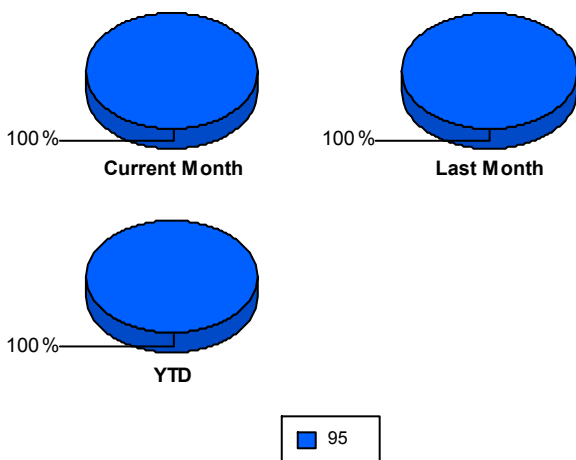


## Performance Measures by Roadway

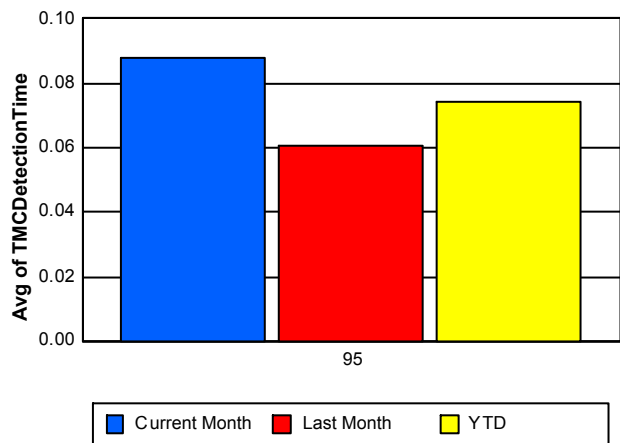
95

	<u>Current Month</u>	<u>Last Month</u>	<u>YTD</u>
Number of Events	2,666	2,689	5,355
Number of Incidents	195	129	324
TMC Detection (min.)	0.09	0.06	0.07
TMC Verification (min.)	3.06	3.00	3.03
TMC Response (min.)	4.08	3.42	3.75
RR Dispatch Time (min.)	1.49	0.84	1.16
RR Resp. Time (min.)	2.67	2.62	2.65
Event Clearance (min.)	53.71	47.91	50.80
Roadway Clear. (min.)	33.22	36.98	34.72
Incident Clearance (min.)	47.85	57.66	51.76
# of Events w/ RR/SIRV	2,528	2,570	5,098
RR/SIRV Responses	2,596	2,686	5,282
RR/SIRV Activities	2,803	2,822	5,625

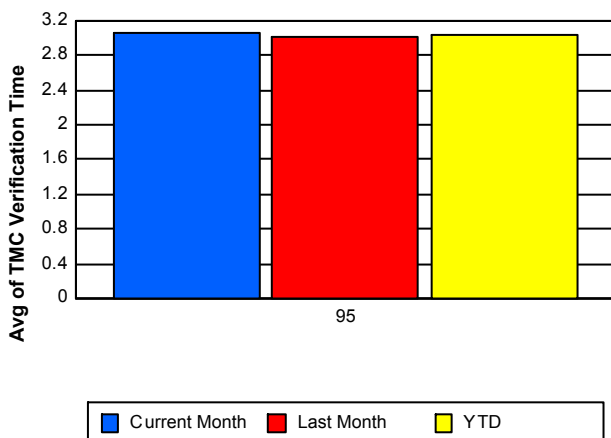
### Number of Events / Roadway



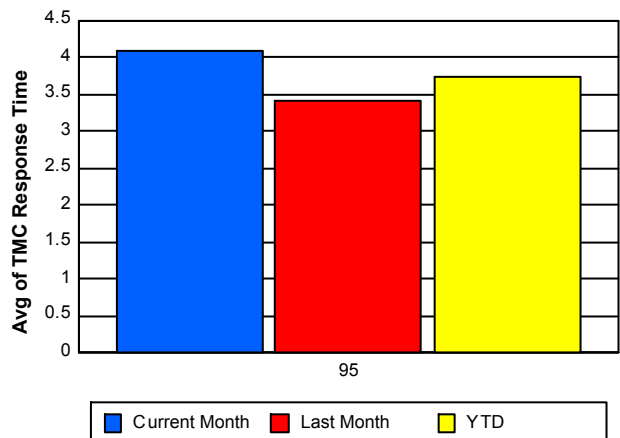
### TMC Detection Time



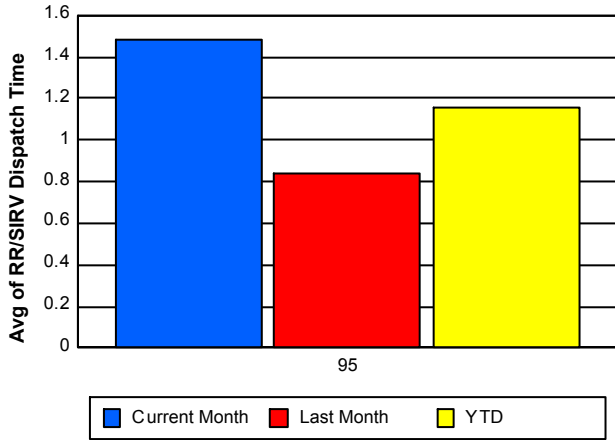
### TMC Verification Time



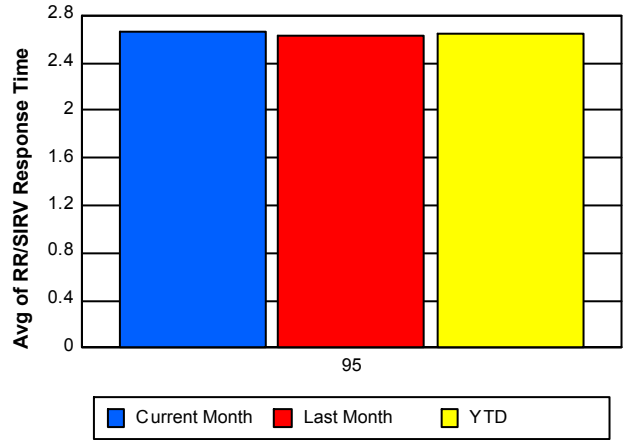
### TMC Response Time



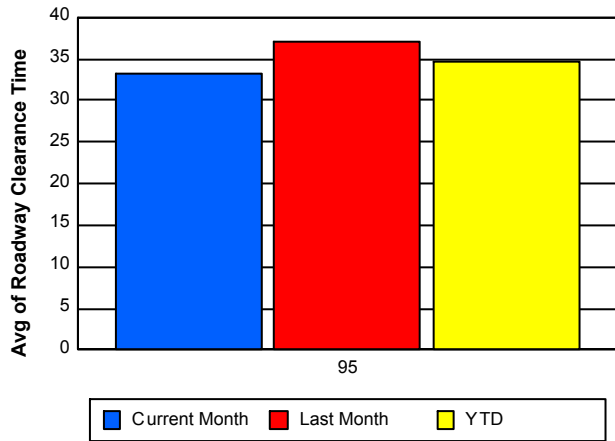
### Road Ranger / SIRV Dispatch Time



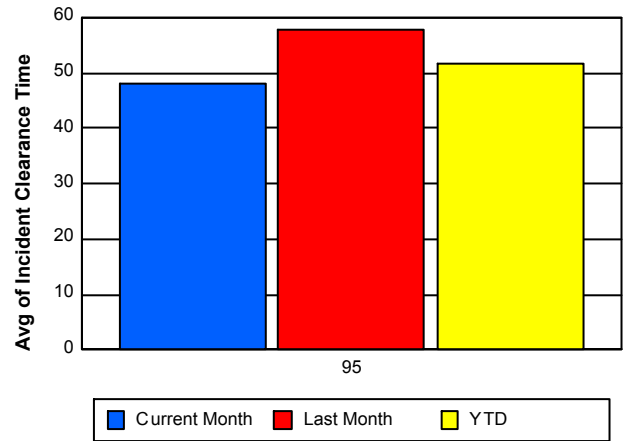
### Road Ranger / SIRV Response Time



### Roadway Clearance Time (2A)



### Incident Clearance Time (3B)



## Performance Measures by Event Type

### Abandoned Vehicle

	<u>Current Month</u>	<u>Last Month</u>	<u>YTD</u>
Number of Events	501	488	989
Number of Incidents	1	1	2
TMC Detection (min.)	0.06	0.01	0.04
TMC Verification (min.)	0.47	0.60	0.53
TMC Response (min.)	1.12	0.74	0.93
RR Dispatch Time (min.)	0.63	0.38	0.50
RR Response Time (min.)	0.49	0.60	0.55
Event Clearance (min.)	195.49	175.80	185.77
Roadway Clearance (min.)	18.88	17.73	18.31
Incident Clearance (min.)	23.03	20.93	21.98
# of Events w/ RR/SIRV	405	402	807
RR/SIRV Assists	411	411	822
RR/SIRV Activities	431	417	848

### Accident

	<u>Current Month</u>	<u>Last Month</u>	<u>YTD</u>
Number of Events	263	200	463
Number of Incidents	132	88	220
TMC Detection (min.)	0.17	0.20	0.18
TMC Verification (min.)	5.89	5.87	5.88
TMC Response (min.)	7.87	7.49	7.70
RR Dispatch Time (min.)	2.17	1.51	1.88
RR Response Time (min.)	6.14	5.97	6.07
Event Clearance (min.)	52.55	60.78	56.11
Roadway Clearance (min.)	37.04	41.39	38.78
Incident Clearance (min.)	56.46	69.77	61.78
# of Events w/ RR/SIRV	248	197	445
RR/SIRV Assists	281	243	524
RR/SIRV Activities	320	254	574

### Congestion

	<u>Current Month</u>	<u>Last Month</u>	<u>YTD</u>
Number of Events	4	9	13
Number of Incidents	0	0	0
TMC Detection (min.)	0.07	0.00	0.02
TMC Verification (min.)	1.91	0.00	0.59
TMC Response (min.)	20.93	0.00	10.47
RR Dispatch Time (min.)	2.78	4.26	3.89
RR Response Time (min.)	18.15	0.00	9.08
Event Clearance (min.)	26.65	45.01	39.36
Roadway Clearance (min.)			
Incident Clearance (min.)			
# of Events w/ RR/SIRV	1	1	2
RR/SIRV Assists	1	1	2
RR/SIRV Activities	1	1	2

## Debris on Roadway

	<u>Current Month</u>	<u>Last Month</u>	<u>YTD</u>
Number of Events	98	127	225
Number of Incidents	13	15	28
TMC Detection (min.)	0.20	0.19	0.19
TMC Verification (min.)	6.36	7.76	7.15
TMC Response (min.)	7.59	7.80	7.71
RR Dispatch Time (min.)	1.74	1.22	1.45
RR Response Time (min.)	5.85	6.58	6.26
Event Clearance (min.)	17.68	12.16	14.56
Roadway Clearance (min.)	18.91	15.60	17.14
Incident Clearance (min.)	21.56	21.74	21.66
# of Events w/ RR/SIRV	96	124	220
RR/SIRV Assists	101	130	231
RR/SIRV Activities	106	134	240

## Disabled Vehicle

	<u>Current Month</u>	<u>Last Month</u>	<u>YTD</u>
Number of Events	1,758	1,812	3,570
Number of Incidents	41	19	60
TMC Detection (min.)	0.08	0.05	0.06
TMC Verification (min.)	3.19	3.00	3.09
TMC Response (min.)	3.94	3.18	3.55
RR Dispatch Time (min.)	1.53	0.81	1.17
RR Response Time (min.)	2.45	2.37	2.41
Event Clearance (min.)	16.07	15.30	15.68
Roadway Clearance (min.)	23.52	19.32	22.19
Incident Clearance (min.)	27.31	23.89	26.22
# of Events w/ RR/SIRV	1,741	1,799	3,540
RR/SIRV Assists	1,763	1,844	3,607
RR/SIRV Activities	1,903	1,956	3,859

## Emergency Vehicles

	<u>Current Month</u>	<u>YTD</u>
Number of Events	1	1
Number of Incidents	0	0
TMC Detection (min.)	0.87	0.87
TMC Verification (min.)	3.18	3.18
TMC Response (min.)	3.15	3.15
RR Dispatch Time (min.)	1.85	1.85
RR Response Time (min.)	1.30	1.30
Event Clearance (min.)	26.75	26.75
Roadway Clearance (min.)		
Incident Clearance (min.)		
# of Events w/ RR/SIRV	1	1
RR/SIRV Assists	1	1
RR/SIRV Activities	1	1

## Other

	<u>Current Month</u>	<u>Last Month</u>	<u>YTD</u>
Number of Events	18	19	37
Number of Incidents	1	0	1
TMC Detection (min.)	0.09	0.05	0.07
TMC Verification (min.)	5.73	5.05	5.38
TMC Response (min.)	15.03	10.07	12.37
RR Dispatch Time (min.)	3.33	2.55	2.91
RR Response Time (min.)	11.33	7.04	9.03
Event Clearance (min.)	41.06	12.06	26.17
Roadway Clearance (min.)	59.97		59.97
Incident Clearance (min.)	62.17		62.17
# of Events w/ RR/SIRV	13	15	28
RR/SIRV Assists	14	16	30
RR/SIRV Activities	15	17	32

## Pedestrian

	<u>Current Month</u>	<u>Last Month</u>	<u>YTD</u>
Number of Events	9	23	32
Number of Incidents	0	0	0
TMC Detection (min.)	0.00	0.06	0.04
TMC Verification (min.)	1.82	1.22	1.39
TMC Response (min.)	1.79	1.21	1.38
RR Dispatch Time (min.)	0.90	0.02	0.27
RR Response Time (min.)	0.89	1.19	1.11
Event Clearance (min.)	10.96	16.77	15.13
Roadway Clearance (min.)			
Incident Clearance (min.)			
# of Events w/ RR/SIRV	9	23	32
RR/SIRV Assists	9	23	32
RR/SIRV Activities	9	24	33

## Police Activity

	<u>Current Month</u>	<u>Last Month</u>	<u>YTD</u>
Number of Events	5	9	14
Number of Incidents	5	5	10
TMC Detection (min.)	0.00	0.26	0.17
TMC Verification (min.)	0.00	1.89	1.22
TMC Response (min.)	10.62	15.46	13.45
RR Dispatch Time (min.)	10.54	5.20	7.43
RR Response Time (min.)	0.08	10.26	6.02
Event Clearance (min.)	61.55	41.15	48.44
Roadway Clearance (min.)	43.67	48.74	46.20
Incident Clearance (min.)	61.55	60.22	60.89
# of Events w/ RR/SIRV	5	7	12
RR/SIRV Assists	6	12	18
RR/SIRV Activities	8	13	21

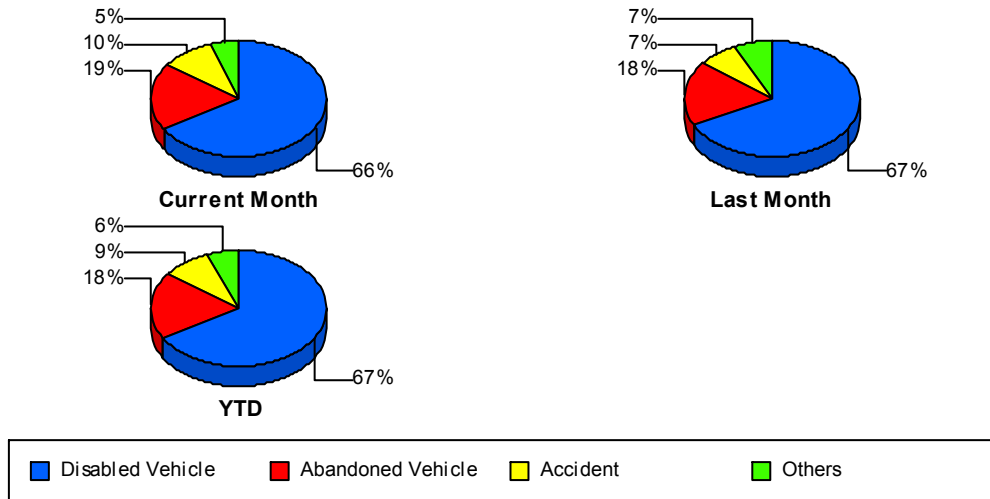
## Visibility

	<u>Current Month</u>	<u>YTD</u>
Number of Events	2	2
Number of Incidents	2	2
TMC Detection (min.)	0.00	0.00
TMC Verification (min.)	0.00	0.00
TMC Response (min.)	1.15	1.15
RR Dispatch Time (min.)	1.14	1.14
RR Response Time (min.)	0.01	0.01
Event Clearance (min.)	43.00	43.00
Roadway Clearance (min.)	40.23	40.23
Incident Clearance (min.)	43.00	43.00
# of Events w/ RR/SIRV	2	2
RR/SIRV Assists	2	2
RR/SIRV Activities	2	2

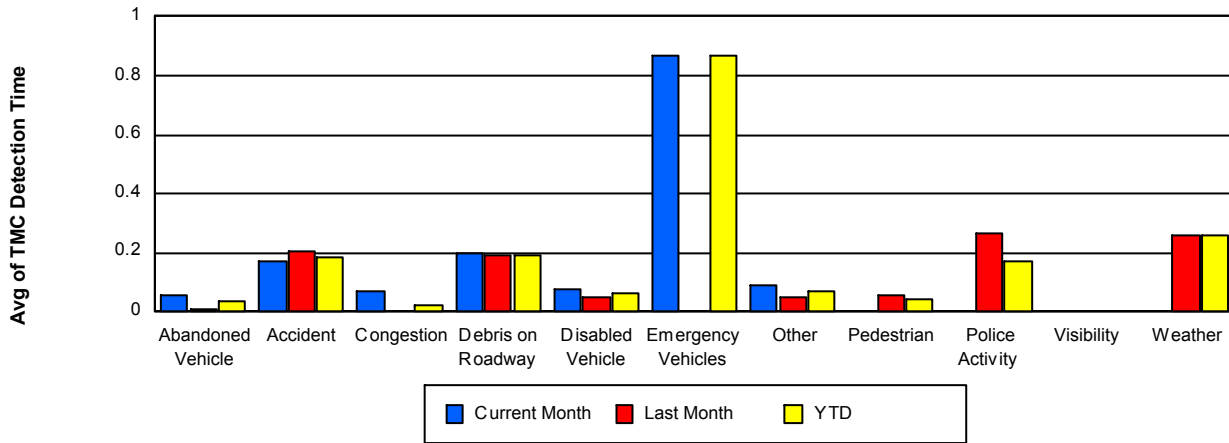
## Weather

	<u>Last Month</u>	<u>YTD</u>
Number of Events	2	2
Number of Incidents	1	1
TMC Detection (min.)	0.26	0.26
TMC Verification (min.)	18.82	18.82
TMC Response (min.)	18.52	18.52
RR Dispatch Time (min.)	2.63	2.63
RR Response Time (min.)	15.89	15.89
Event Clearance (min.)	115.27	115.27
Roadway Clearance (min.)	265.73	265.73
Incident Clearance (min.)	196.32	196.32
# of Events w/ RR/SIRV	2	2
RR/SIRV Assists	6	6
RR/SIRV Activities	6	6

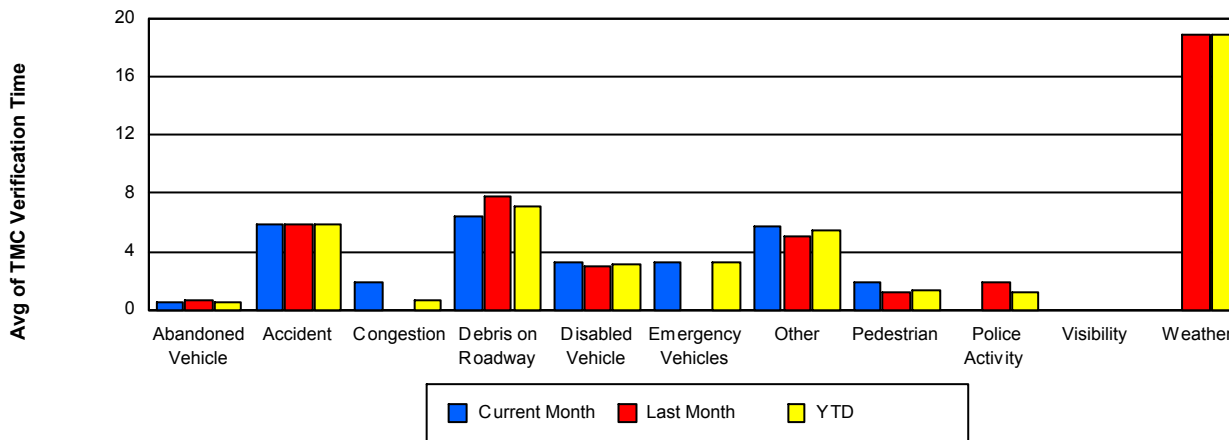
## Number of Events / Event Type



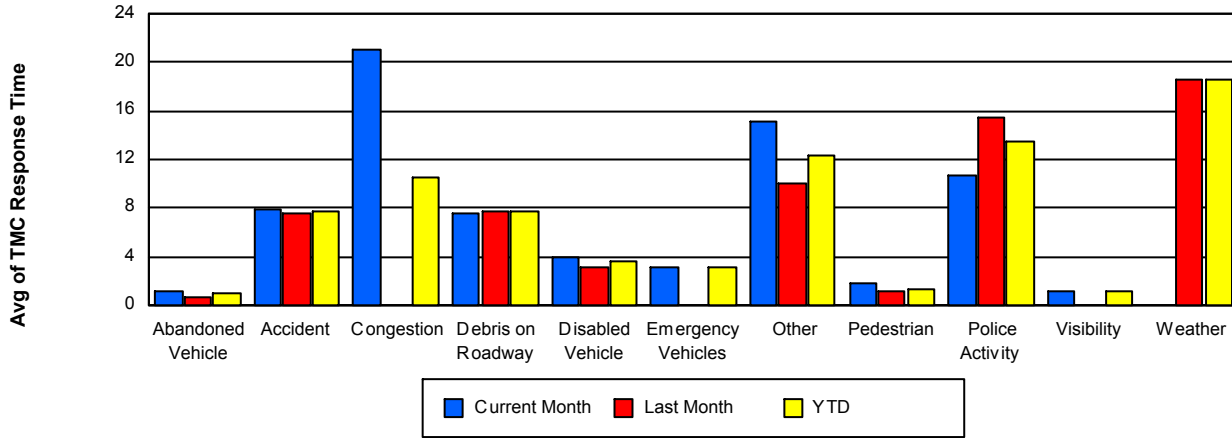
## TMC Detection Time



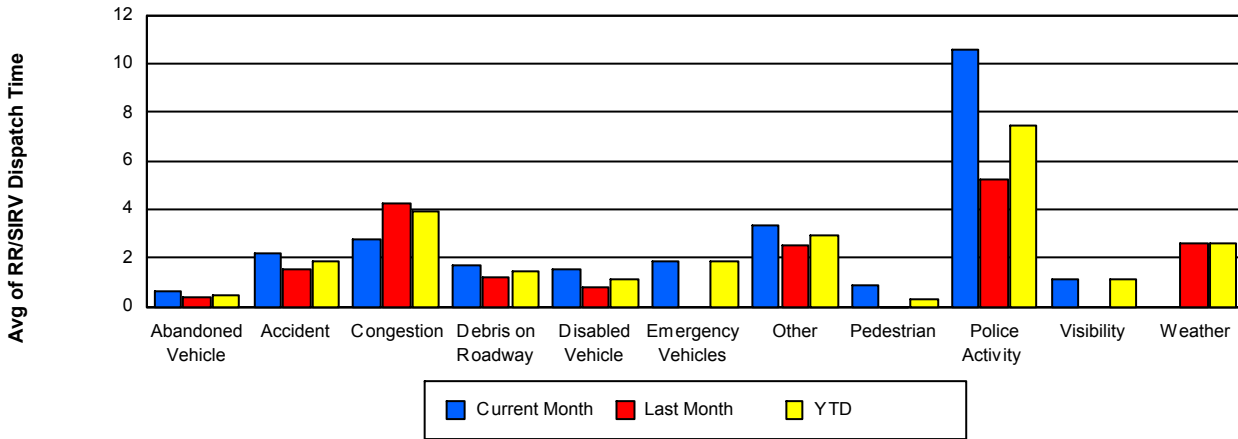
## TMC Verification Time



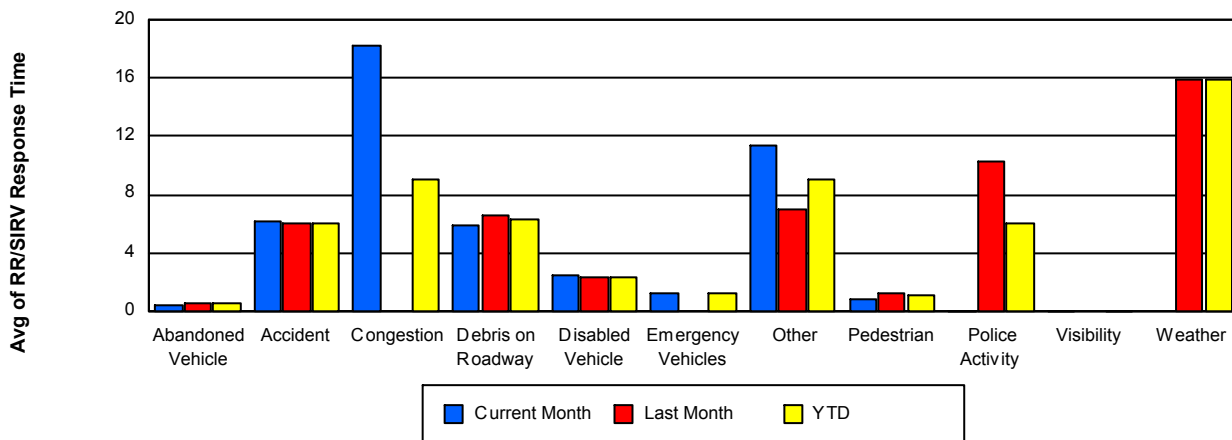
## TMC Response Time



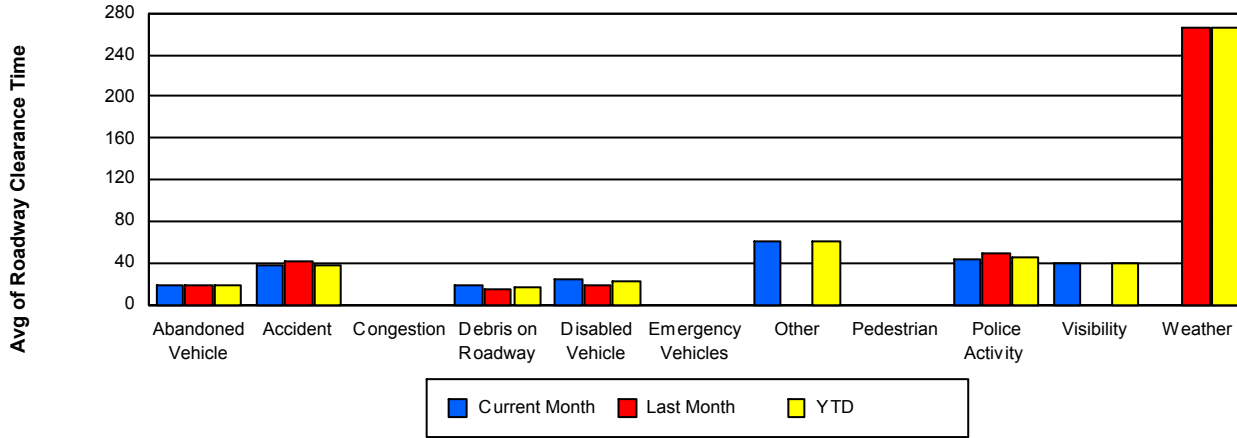
## Road Ranger / SIRV Dispatch Time



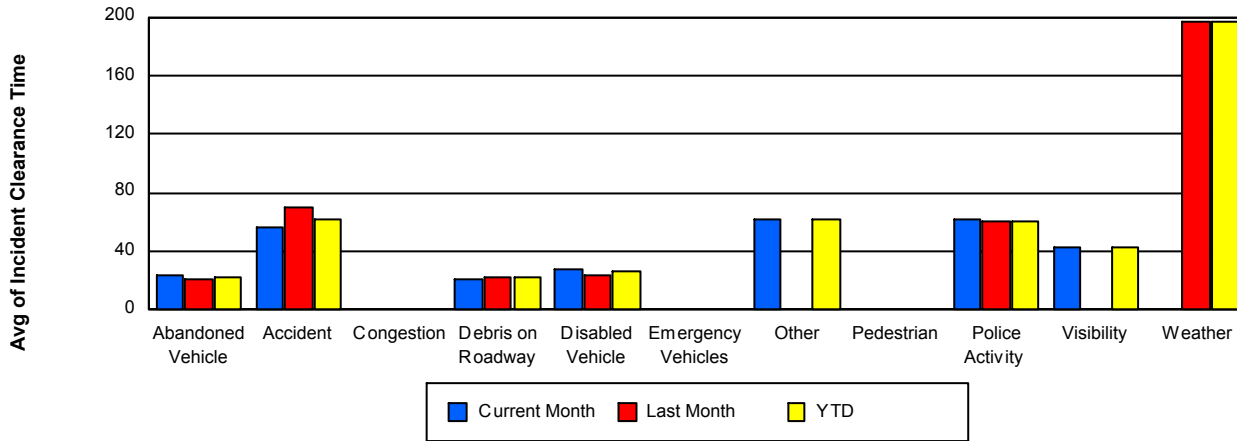
## Road Ranger / SIRV Response Time



## Roadway Clearance Time (2A)



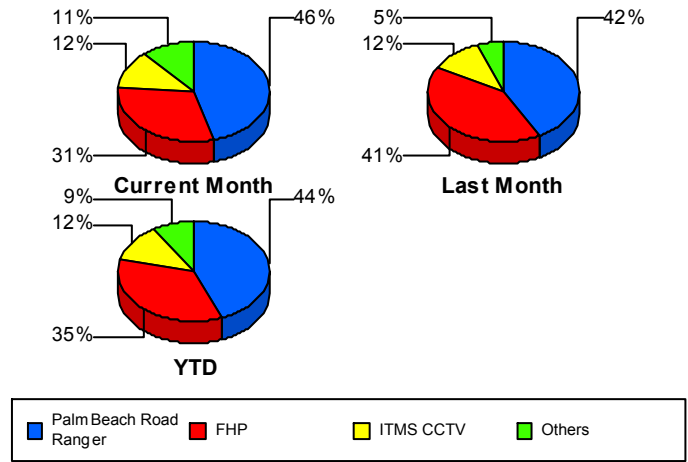
## Incident Clearance Time (3B)



## Incident Detection Methods

	Current Month	Last Month	YTD
Broward Road Ranger	1	0	1
Construction CEI	3	0	3
District 4	12	6	18
FHP	60	53	113
ITMS	2	0	2
ITMS CCTV	24	15	39
Motorist	2	1	3
Palm Beach Road Rang	89	54	143
SmarTraveler (511)	2	0	2
<b>Total</b>	<b>195</b>	<b>129</b>	<b>324</b>

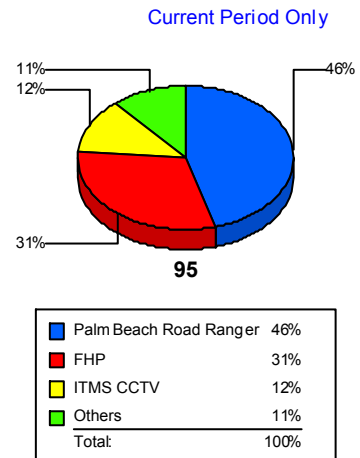
### Total Incidents by Detection Method



## Incident Detection Methods by Roadway

		Current Month	Last Month	YTD
95	Broward Road Ranger	1	0	1
	Construction CEI	3	0	3
	District 4	12	6	18
	FHP	60	53	113
	ITMS	2	0	2
	ITMS CCTV	24	15	39
	Motorist	2	1	3
	Palm Beach Road Rang	89	54	143
	SmarTraveler (511)	2	0	2
	<b>Total</b>	<b>195</b>	<b>129</b>	<b>324</b>
<b>Total</b>		<b>195</b>	<b>129</b>	<b>324</b>

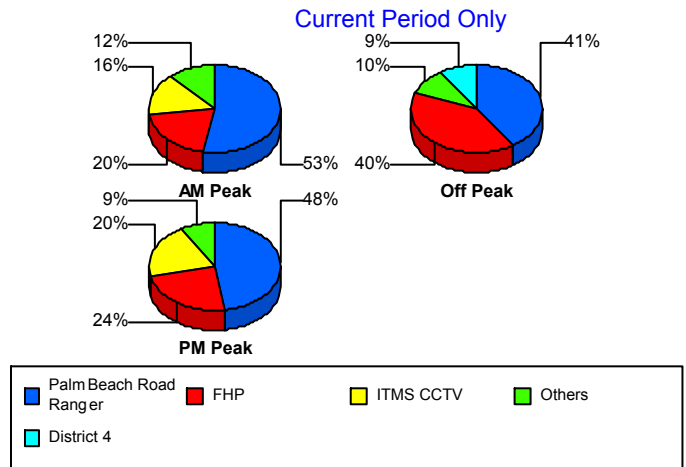
### Total Events by Roadway and Detection Method



### Incident Detection Methods by Peak Period

		Current Month	Last Month	YTD
AM Peak	Broward Road Ranger	1	0	1
	District 4	3	4	7
	FHP	10	14	24
	ITMS CCTV	8	4	12
	Motorist	1	0	1
	Palm Beach Road Rang	27	17	44
	SmarTraveler (511)	1	0	1
	<b>Total</b>	<b>51</b>	<b>39</b>	<b>90</b>
Off Peak	Construction CEI	3	0	3
	District 4	9	1	10
	FHP	39	23	62
	ITMS CCTV	7	8	15
	Motorist	0	1	1
	Palm Beach Road Rang	40	29	69
	<b>Total</b>	<b>98</b>	<b>62</b>	<b>160</b>
PM Peak	District 4	0	1	1
	FHP	11	16	27
	ITMS	2	0	2
	ITMS CCTV	9	3	12
	Motorist	1	0	1
	Palm Beach Road Rang	22	8	30
	SmarTraveler (511)	1	0	1
	<b>Total</b>	<b>46</b>	<b>28</b>	<b>74</b>
<b>Total</b>	<b>195</b>	<b>129</b>	<b>324</b>	

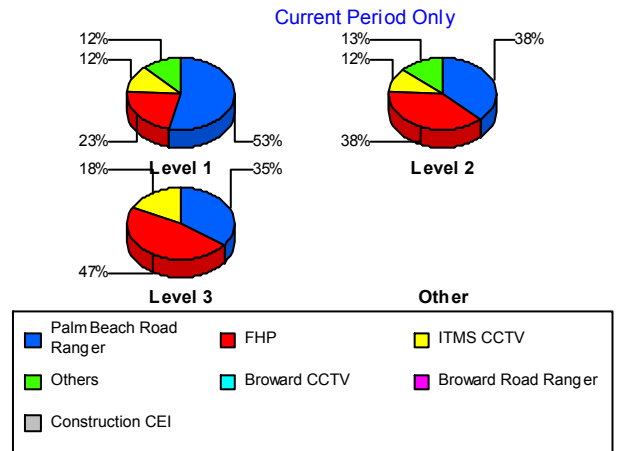
Total Events by Peak Period and Detection Method



## Incident Detection Methods by Severity

		Current Month	Last Month	YTD
Level 1	Broward Road Ranger	1	0	1
	Construction CEI	1	0	1
	District 4	9	4	13
	FHP	23	26	49
	ITMS CCTV	12	5	17
	Motorist	0	1	1
	Palm Beach Road Rang	54	39	93
	SmarTraveler (511)	1	0	1
	<b>Total</b>	<b>101</b>	<b>75</b>	<b>176</b>
Level 2	Construction CEI	2	0	2
	District 4	3	1	4
	FHP	29	20	49
	ITMS	2	0	2
	ITMS CCTV	9	6	15
	Motorist	2	0	2
	Palm Beach Road Rang	29	9	38
	SmarTraveler (511)	1	0	1
	<b>Total</b>	<b>77</b>	<b>36</b>	<b>113</b>
Level 3	District 4	0	1	1
	FHP	8	7	15
	ITMS CCTV	3	4	7
	Palm Beach Road Rang	6	6	12
	<b>Total</b>	<b>17</b>	<b>18</b>	<b>35</b>
<b>Total</b>	<b>195</b>	<b>129</b>	<b>324</b>	

**Total Events by Severity and Detection Method**



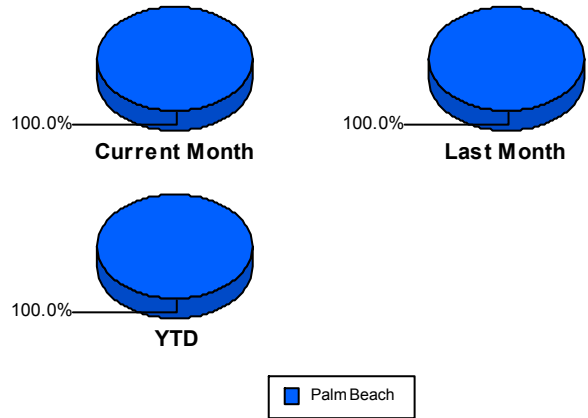
# Road Ranger / SIRV Performance Measures

## Road Ranger / SIRV Performance By County

RR/SIRV Responses per County

Values presented are:  
 - Total Events with a RR/SIRV Response  
 - Total RR/SIRV Responses,  
 - Total Activities Performed

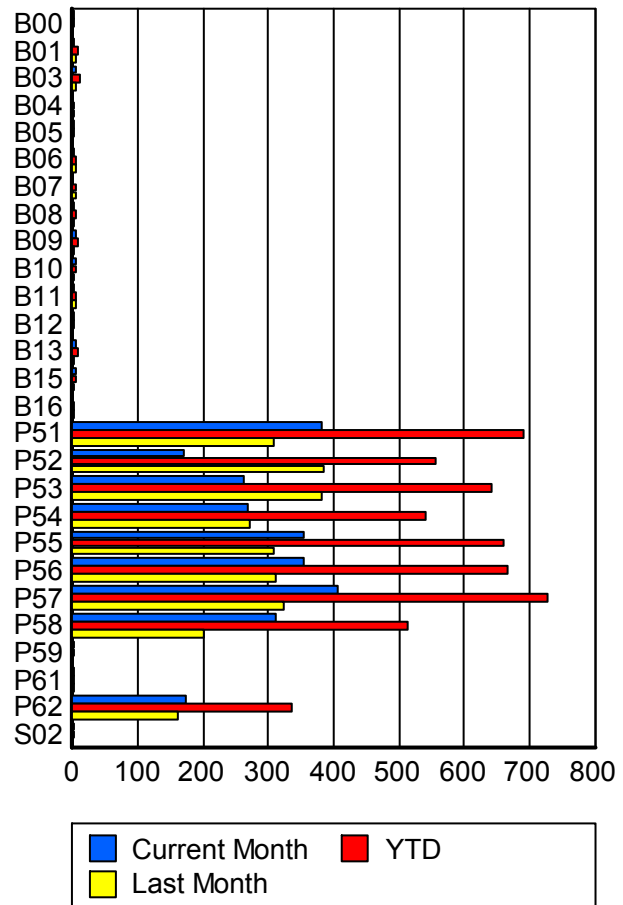
	Current Mo	Last Month	YTD
Palm Beach	<b>2,617</b>	<b>2,570</b>	<b>5,187</b>
	<b>2,721</b>	<b>2,686</b>	<b>5,407</b>
	<b>2,903</b>	<b>2,822</b>	<b>5,725</b>



## Road Ranger / SIRV Performance By Truck

	Current Mo	Last Month	YTD
B00	3	0	3
	3	0	3
	4	0	4
B01	3	5	8
	3	5	8
	4	5	9
B03	4	5	9
	5	5	10
	5	5	10
B04	0	1	1
	0	1	1
	0	1	1
B05	3	0	3
	3	0	3
	3	0	3
B06	1	4	5
	1	4	5
	1	4	5
B07	0	4	4
	0	4	4
	0	4	4
B08	2	2	4
	2	2	4
	2	2	4
B09	6	1	7
	6	1	7
	6	1	7

**RR/SIRV  
Responses per  
Truck**



	Current Mo	Last Month	YTD
B10	5	1	6
	5	1	6
	5	1	6
B11	1	5	6
	1	5	6
	1	5	6
B12	1	0	1
	1	0	1
	1	0	1
B13	5	3	8
	5	3	8
	5	3	8
B15	4	1	5
	4	1	5
	4	1	5
B16	0	3	3
	0	3	3
	0	3	3
P51	379	306	685
	383	307	690
	408	329	737
P52	169	383	552
	169	386	555
	174	406	580
P53	260	378	638
	261	380	641
	271	399	670
P54	268	270	538
	268	272	540
	283	288	571
P55	352	305	657
	354	307	661
	383	318	701
P56	353	308	661
	354	311	665
	380	327	707
P57	401	319	720
	405	324	729
	436	346	782
P58	309	199	508
	311	202	513
	332	211	543
P59	1	0	1
	1	0	1
	1	0	1

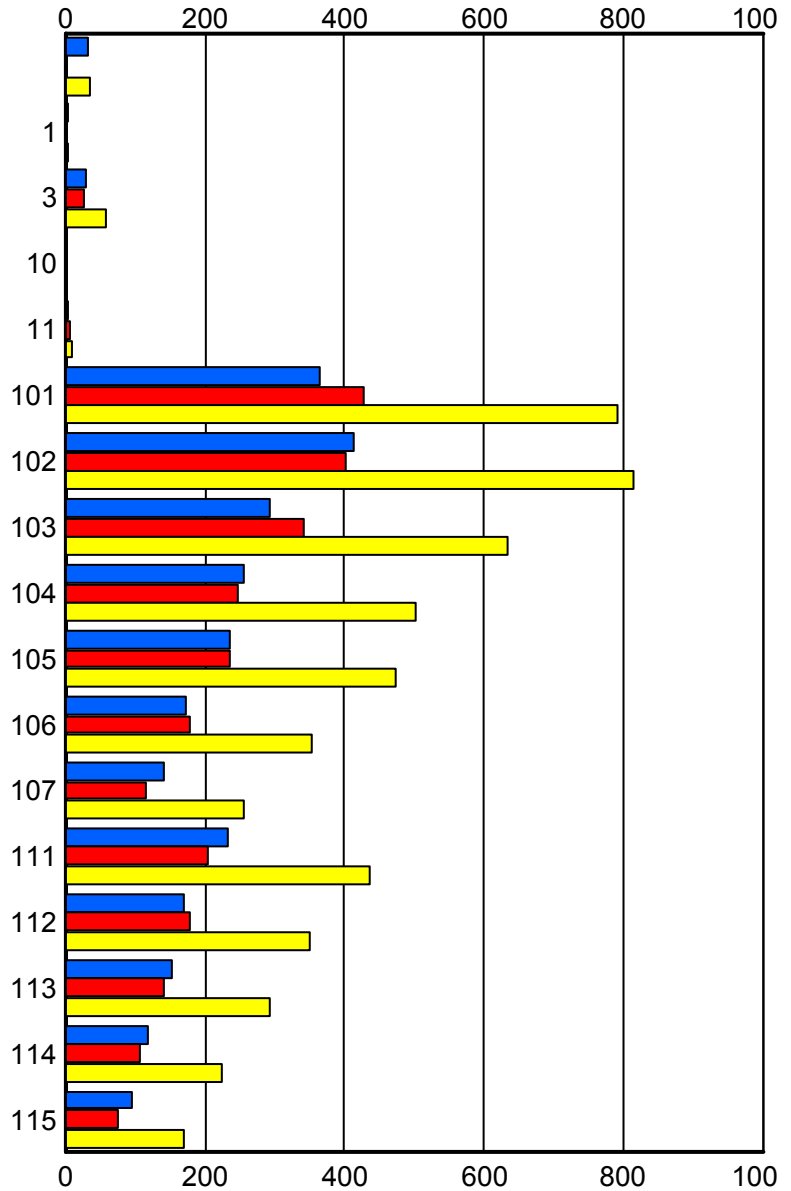
	Current Mo	Last Month	YTD
P61	1	2	3
	1	2	3
	1	2	3
P62	174	157	331
	174	160	334
	192	161	353
S02	1	0	1
	1	0	1
	1	0	1

### Road Ranger / SIRV Performance By Beat

	Current Mo	Last Month	YTD
	33	1	34
	33	1	34
	34	1	35
1	3	0	3
	3	0	3
	4	0	4
3	29	28	57
	31	28	59
	31	28	59
10	1	0	1
	1	0	1
	1	0	1
11	4	7	11
	4	7	11
	5	7	12
101	363	422	785
	364	427	791
	383	447	830
102	412	397	809
	413	401	814
	444	420	864
103	291	337	628
	293	341	634
	315	358	673
104	253	244	497
	257	246	503
	277	264	541
105	235	232	467
	237	236	473
	254	247	501
106	174	178	352
	174	179	353
	184	188	372
107	138	114	252
	141	115	256
	151	115	266
111	230	202	432
	232	205	437
	243	218	461
112	170	178	348
	171	179	350
	176	190	366
113	149	139	288
	153	140	293
	168	150	318

Values presented are:  
 - Total Events with a RR/SIRV Response  
 - Total RR/SIRV Responses,  
 - Total Activities Performed

### RR/SIRV Responses per Beat



■ Current Month   
 ■ Last Month   
 ■ YTD

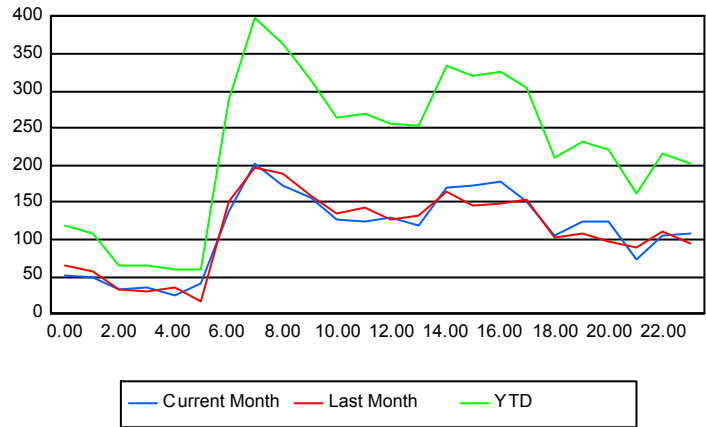
	Current Mo	Last Month	YTD
114	118	107	225
	118	107	225
	124	113	237
115	96	73	169
	96	74	170
	109	76	185

### Road Ranger / SIRV Performance By Time of Day

Values presented are:  
 - Total Events with a RR/SIRV Response  
 - Total RR/SIRV Responses,  
 - Total Activities Performed

	Current Mo	Last Month	YTD
12AM-1AM	52	63	115
	53	65	118
	54	70	124
1AM-2AM	48	50	98
	50	57	107
	54	63	117
2AM-3AM	31	30	61
	32	33	65
	33	35	68
3AM-4AM	35	27	62
	35	29	64
	40	30	70
4AM-5AM	24	31	55
	26	35	61
	29	39	68
5AM-6AM	33	17	50
	41	18	59
	43	20	63
6AM-7AM	132	147	279
	139	150	289
	157	156	313
7AM-8AM	196	182	378
	202	196	398
	212	207	419
8AM-9AM	165	182	347
	173	190	363
	185	198	383
9AM-10AM	152	151	303
	157	158	315
	163	169	332
10AM-11AM	123	133	256
	128	135	263
	140	150	290

### Number of Responses / Hour of the Day



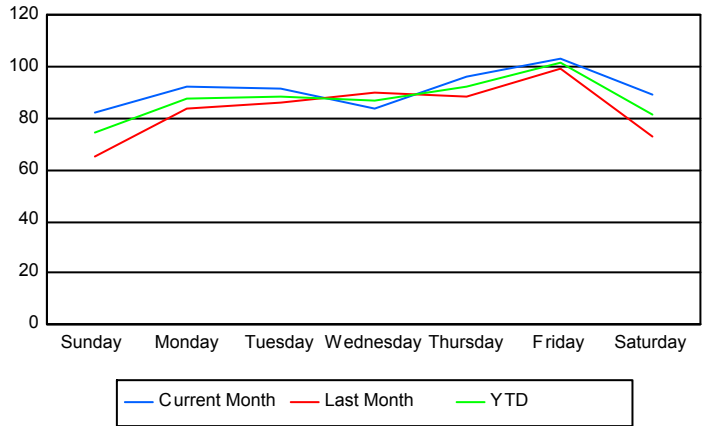
	Current Mo	Last Month	YTD
11AM-12PM	119	140	259
	125	144	269
	132	154	286
12PM-1PM	120	124	244
	130	127	257
	144	136	280
1PM-2PM	116	124	240
	120	132	252
	135	138	273
2PM-3PM	168	158	326
	171	164	335
	183	168	351
3PM-4PM	169	144	313
	173	147	320
	177	150	327
4PM-5PM	166	146	312
	177	148	325
	183	151	334
5PM-6PM	141	149	290
	150	155	305
	158	158	316
6PM-7PM	105	94	199
	106	104	210
	113	108	221
7PM-8PM	121	104	225
	124	107	231
	131	108	239
8PM-9PM	122	93	215
	124	97	221
	129	100	229
9PM-10PM	71	85	156
	72	89	161
	75	91	166
10PM-11PM	103	106	209
	106	110	216
	111	118	229
11PM-12AM	105	90	195
	107	96	203
	122	105	227

## Road Ranger / SIRV Performance By Day of Week

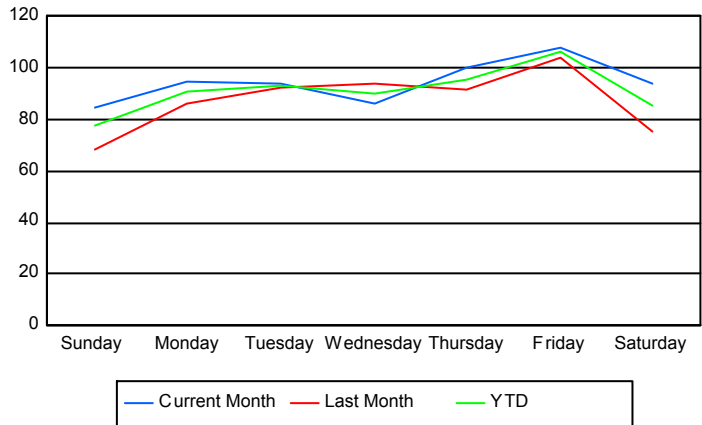
Values presented are:  
 - Total Events with a RR/SIRV Response  
 - Total RR/SIRV Responses,  
 - Total Activities Performed

	Current Mo	Last Month	YTD
Sunday	326 336 361	257 270 281	583 606 642
Monday	366 378 408	331 342 358	697 720 766
Tuesday	353 364 383	425 452 481	778 816 864
Wednesday	333 342 363	440 457 481	773 799 844
Thursday	383 400 429	436 453 470	819 853 899
Friday	512 533 574	394 411 437	906 944 1,011
Saturday	347 368 385	290 301 314	637 669 699

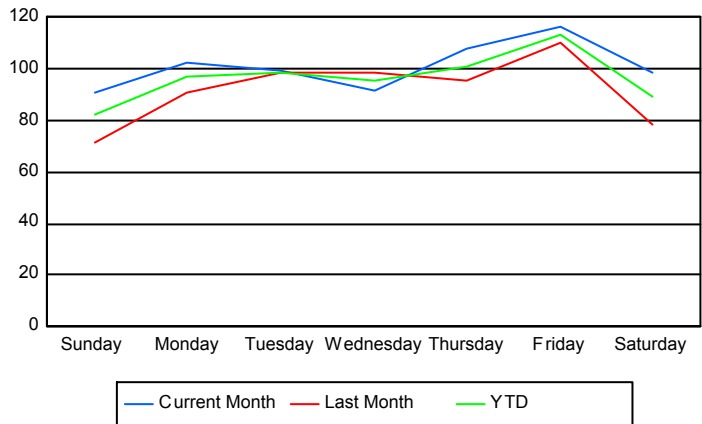
### Avg # of events with a RR/SIRV Response per Day of the Week



### Avg # of RR/SIRV Responses per Day of the Week



### Avg # of RR/SIRV Activities Performed per Day of the Week



### Road Ranger / SIRV Responses per Time of Day and Day of Week

